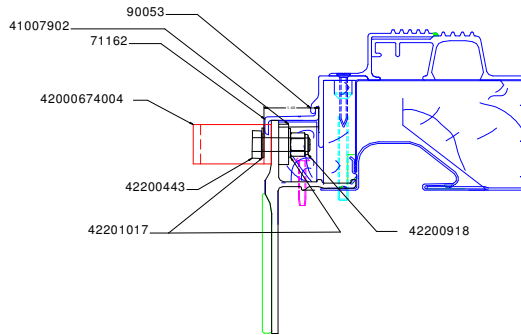


Gordon Foods – Ramp Clip Repair



1. Remove clips, pn 42000674004, and discard fasteners.



2. Remove and retain screws securing aluminum and PVC threshold parts 71162 and 90053.
3. Remove caulk from front and rear of 71162 and 90053. Remove caulk (if any) between 71162 and bottom rail.



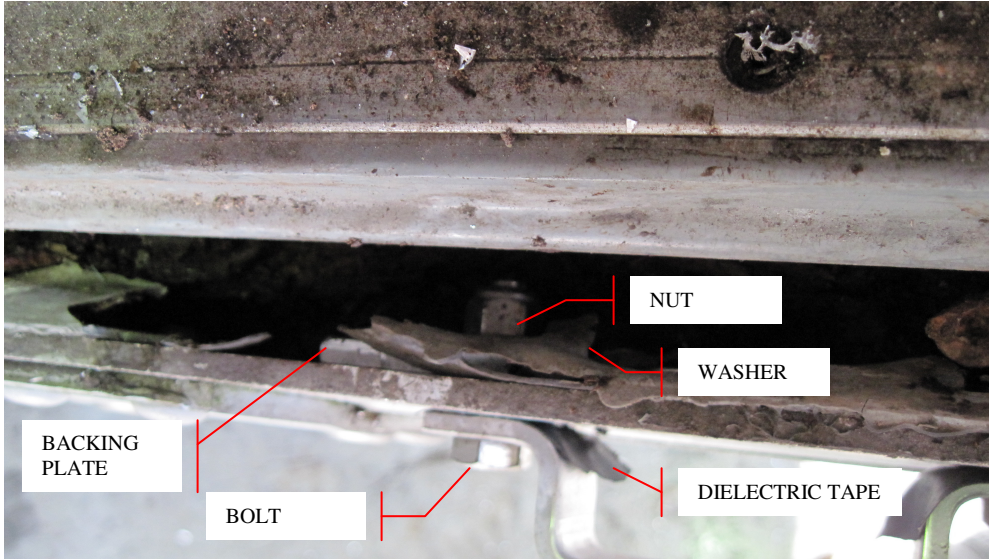
4. Gently pry up and out on 71162, remove and retain 71162 to expose the wood furring below.



5. Mark the top face of the wood furring at clip 42000674004 fastener locations.
6. Cut approx a 6 1/2" wide notch in the wood furring centered at clip locations to allow installation of the backing plate 41007902, washers, and 3/8" locknuts. This cut may be made by removing the wood furring, cutting then replacing or by notching the furring in place.
7. Drill existing holes to 13/32" to accept a 3/8" bolt.



8. Apply dielectric tape to clip 420006704 and backing plate 41007902. Reinstall clips with 4 stainless steel .38-16x1.50 bolts 42200443, 4 stainless steel .38 washers 42201018, backing plate, and 4 stainless lock nuts 42200918. Torque bolts to 25 ft#.



9. Reinstall threshold parts 71162 and 90053 and re-caulk.

10. Completed installation

