



**MOTOR COACH**  
INDUSTRIES

January 4, 2012

«Customer\_Name»

ATTENTION: TECH SERVICE DEPT/MAINT

«Address»

«Address\_2»

«City», «State» «Zip»

«ctry»

**SUBJECT: SAFETY RECALL OF MCI COACHES WITH ELECTRONIC STABILITY CONTROL**

Ref.: **NHTSA # (MCI) 11V-524**  
**NHTSA # (Meritor WABCO) 11E-039**  
**TRANSPORT CANADA #TC 2011-377**  
**MCI Service Bulletin 371**

Attention Owner:

This notice is sent to you in accordance with the National Traffic and Motor Vehicle Safety Act and the Canadian Motor Vehicle Safety Act.

Motor Coach Industries, Inc. ("MCI") has decided that a defect which relates to motor vehicle safety exists in certain MCI D, J, and E model coaches equipped with a Meritor WABCO ("MW") Vehicle Control Systems pneumatic Electronic Stability Control ("ESC") system containing an ESC module with MW part number 446-065-027-0. MW reports that under certain unique road and driving conditions involving tight, successive, highly banked curves in opposite directions, the vehicle body roll and road inclination characteristics may adversely affect the slip angle calculation by the ESC module. This may cause the ESC to perceive an oversteering situation and therefore apply the front axle outer wheel service brake until the vehicle is perceived to be stable by the ESC. This unnecessary brake intervention may pull the vehicle out of the curve, requiring the driver to counter steer to keep the vehicle on its intended path. If the driver is slow to react during this ESC intervention, the vehicle may deviate from its intended path, increasing the risk of a crash. Please see the enclosed MCI Service Bulletin 371, and the MW documents attached thereto, for further information.

1700 EAST GOLF ROAD, SUITE 300  
SCHAUMBURG, ILLINOIS 60173  
847-285-2000 PHONE  
866-624-2622 TOLL FREE  
WWW.MCICOACH.COM

The vehicles that are subject to this notice are the following MCI D, J, and E model coaches (last five VIN digits):

<b>Model</b>	<b>VIN'S</b>
<b>D4000/D4005/D4500/D4505/D4000ISTV</b>	<b>57830,58581,58890,58907, 58980 to 59269</b>
	<b>59271 to 59306, 59308, 59318 to 59323, 59325</b>
	<b>59335 to 59615, 59625 to 59938</b>
<b>E and J models</b>	<b>61996, 64618, 64918, 64919, 64948 to 64950,</b>
	<b>64953 to 64964, 64966, 64968, 64970, 64972, 64974</b>
	<b>64976, 64978 to 64988, 64990 to 65004, 65006</b>
	<b>65011, 65013 to 65082, 65086 to 65098, 65106</b>
	<b>65108, 65110, 65112 to 65118, 65120, 65122</b>
	<b>65124 to 65147, 65149, 65151 to 65170, 65172, 65174</b>
	<b>65176, 65178, 62180, 65182, 65184, 65186 to 65188</b>
	<b>65190 to 65202, 65204 to 65334, 65336, 65338</b>
	<b>65340, 65342 to 65384, 65386, 65388 to 65452</b>
	<b>65455 to 66024</b>

MCI is conducting a recall to replace the MW ESC module and recalibrate the ESC system. Please see the enclosed MCI Service Bulletin 371 for further information. The recall work will be provided at no cost to you.

MCI records indicate that you are the owner or operator of the following vehicle(s) included in this recall:

«**Unit\_Numbers**»

MCI strongly urges you to have the recall work performed on your vehicle(s) as quickly as possible.

You may contact the MCI Customer Service Line at 1-800-241-2947 if you have any questions about this recall campaign or wish to make arrangements to have your vehicle(s) repaired at an authorized MCI service center. Submittal of MCI Warranty Claim Forms may be completed on MCI's website at <http://fleetsupportiw.mcicoach.com/iwarranty/signon> (click on Customer Care System), or a photocopy of the Warranty Claim Form found in the Warranty Manual can be mailed / faxed to the MCI Warranty Department. Please refer to Service Bulletin 371, and your OWNER LIMITED WARRANTY MANUAL, for more detailed information.

After contacting MCI Customer Service, if you are still unable to have the safety defect remedied without charge and within a reasonable time, you may submit a complaint:

For the U.S.:

The Administrator  
National Highway Traffic Safety Administration  
1200 New Jersey Avenue, SE.,  
Washington, DC 20590;  
or call the toll-free Vehicle Safety Hotline at 1-888-327-4236; (TTY: 1-800-424-9153); or go to  
<http://www.safercar.gov>.

For Canada:  
Road Safety and Motor Vehicle  
Regulation Directorate  
Transport Canada  
Tower C, Place de Ville  
330 Sparks Street  
Ottawa, Ontario  
K1A 0N5  
or call the Transport Canada's Information Centre at 1-800-333-0371.

If you are the lessor of the vehicle(s) identified above, Federal law requires that you forward this notice by first class mail to the most recent lessee(s) known to you, within ten days of your receipt of this notice.

If you have sold or otherwise transferred the vehicle(s) identified above, please contact the MCI Customer Service Line at 1-800-241-2947 with all of the information you have regarding the current owner/operator of the vehicle(s).

If you had your vehicle repaired for this condition prior to receipt of this notice and incurred any costs, you may be eligible for reimbursement. Please contact the MCI Customer Service Line at 1-800-241-2947 for further information in that regard.

We regret the inconvenience this may cause you, but urge you to implement the recall procedures with respect to your vehicle(s) as soon as possible for your added safety and satisfaction.

Sincerely,

*Motor Coach Industries*  
Warranty Department

Enclosures: MCI Service Bulletin 371 and attachments thereto

1700 EAST GOLF ROAD, SUITE 300  
SCHAUMBURG, ILLINOIS 60173  
847-285-2000 PHONE  
866-624-2622 TOLL FREE  
WWW.MCICOACH.COM



# Service Bulletin No. 371

<b>MODEL</b> D / E / J Series Coaches	<b>TYPE</b> Field Change Program	<b>SECTION/GROUP</b> 4--Brakes & Air System	<b>DATE</b> Dec. 17, 2011
<b>SUBJECT</b> ELECTRONIC STABILITY CONTROL ( ESC ) MODULE			
<b>CONDITIONS</b>			

Ref. Meritor Wabco NHTSA Recall No.: 11E-039

Ref. MCI NHTSA Recall No.: 11V-524

Ref. Transport Canada Recall No.: 2011-377

### Customer Complaint:

Meritor WABCO ( MW ) has notified Motor Coach Industries ( MCI ) that a defect exists in certain pneumatic Electronic Stability Control ( ESC ) system modules, including MW part number 446-065-027-0, as described more specifically in the attached MW customer notification letter dated October 5, 2011 ( MW Letter ). MW reports that under certain unique road and driving conditions involving tight, successive, highly banked curves in opposite directions, the vehicle body roll and road inclination characteristics may adversely affect the slip angle calculation by the ESC module. This may cause the ESC to perceive an oversteering situation and therefore apply the front axle outer wheel service brake until the vehicle is perceived to be stable by the ESC. This unnecessary brake intervention may pull the vehicle out of the curve, requiring the driver to counter steer to keep the vehicle on its intended path. If the driver is slow to react during this ESC intervention, the vehicle may deviate from its intended path, increasing the risk of a crash. Please see the attached MW letter for additional information.

### Cause:

MW reports that under certain driving conditions an error in the calculation of the slip angle by the ESC module may cause an unintended brake application. Please see the attached MW letter for additional information.

### Corrective Action:

MCI strongly encourages owners of the coaches listed in the table below to schedule an appointment to have their coaches repaired as soon as possible by calling the MCI Customer Service Line at 1-800-241-2947. MW has issued the attached Technical Bulletin TP-1205 ( 12-11 ). However, proper repairs will require the use of specialized calibration equipment, and therefore MCI strongly urges customers to make an appointment to have the repairs performed by trained technicians who have the necessary equipment.

57830	58581	58890	58907	58980 to 59269
59271 to 59306	59308	59318 to 59323	59325	59335 to 59615
59625 to 59938				
61996	64618	64918	64919	64948 to 64950
64953 to 64964	64966	64968	64970	64972
64974	64976	64978 to 64988	64990 to 65004	65006
65011	65013 to 65082	65086 to 65098	65106	65108
65110	65112 to 65118	65120	65122	65124 to 65147
65149	65151 to 65170	65172	65174	65176
65178	62180	65182	65184	65186 to 65188
65190 to 65202	65204 to 65334	65336	65338	65340
65342 to 65384	65386	65388 to 65452	65455 to 66024	

### Parts

Qty.	Old P/N	New P/N	Description
1	04-31-1042		Module, Electronic Stability Control
1		04-31-1111	Kit, Module, Electronic Stability Control ( specialized calibration equipment req'd ) <i>Kit Contents Are:</i>
1		04-31-1110	Module, Electronic Stability Control, w/ Decal
1			Meritor WABCO Technical Bulletin

**! WARNING**

Read this entire procedure before beginning work.

Use Safe Shop Practices At All Times.

**Service Procedure:**

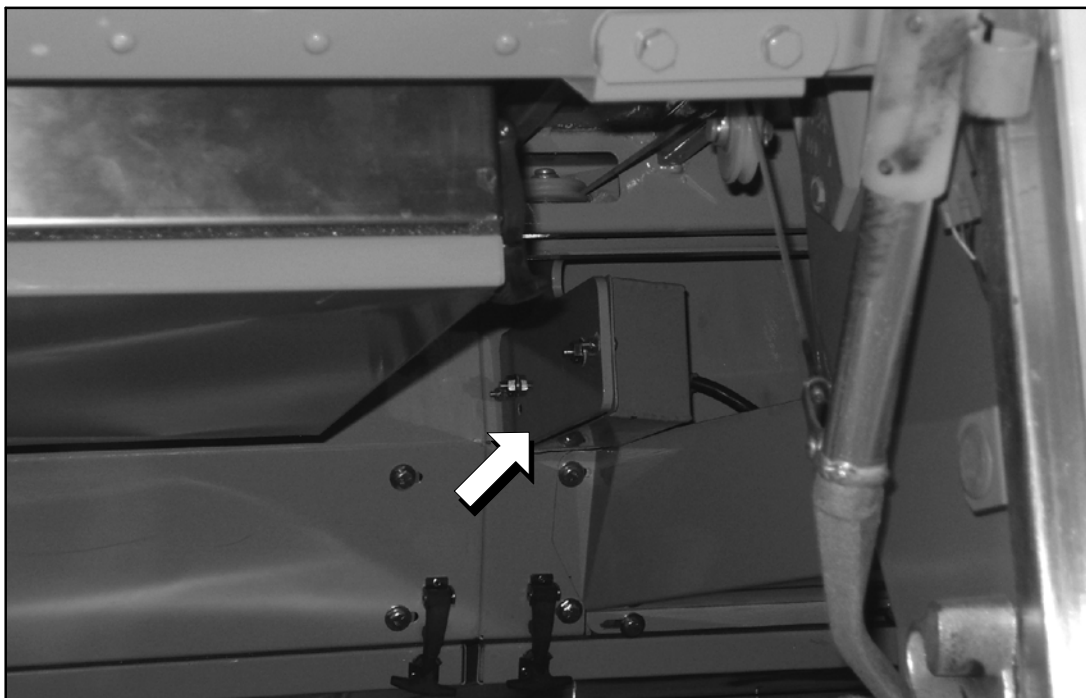
1. For D model coaches, turn the main battery disconnect switch to the OFF position. For E / J model coaches prior to 65013, turn the main battery disconnect switch to the OFF position. For E / J model coaches effective with 65013, activate the disconnect feature of the main battery disconnect ( MDS ) system by pressing ( for one second only ) the momentary toggle switch on the MDS module to OFF. An audible click can be heard from the main solenoids in the MDS module. Position the rotary switch to the DOWN ( OFF ) position. For E / J model coaches effective with 65637, activate the disconnect feature of the main battery disconnect system ( MDS ) by positioning the rotary switch to the DOWN ( OFF ) position.
2. Chock both sides of the tires.

**NOTICE**

**Steps 3. to 12. are applicable to D model coaches.**

**Steps 13. to 22. are applicable to E / J model coaches.**

3. Open the #3 baggage bay compartment curbside and roadside doors. Insert the positive lock pin to secure the door in the open position.
4. Locate the ESC module on the rear section of the roadside baggage bay compartment ( refer to Figure 1).
5. Remove and retain the cover mounting hardware ( refer to Figure 1). Place the cover and hardware aside to be re-installed at a later step in this procedure.



**Figure 1.**

6. Locate the electrical harness connected to the ESC module ( refer to Figure 2). Carefully disconnect the harness from the ESC module.



**Figure 2.**

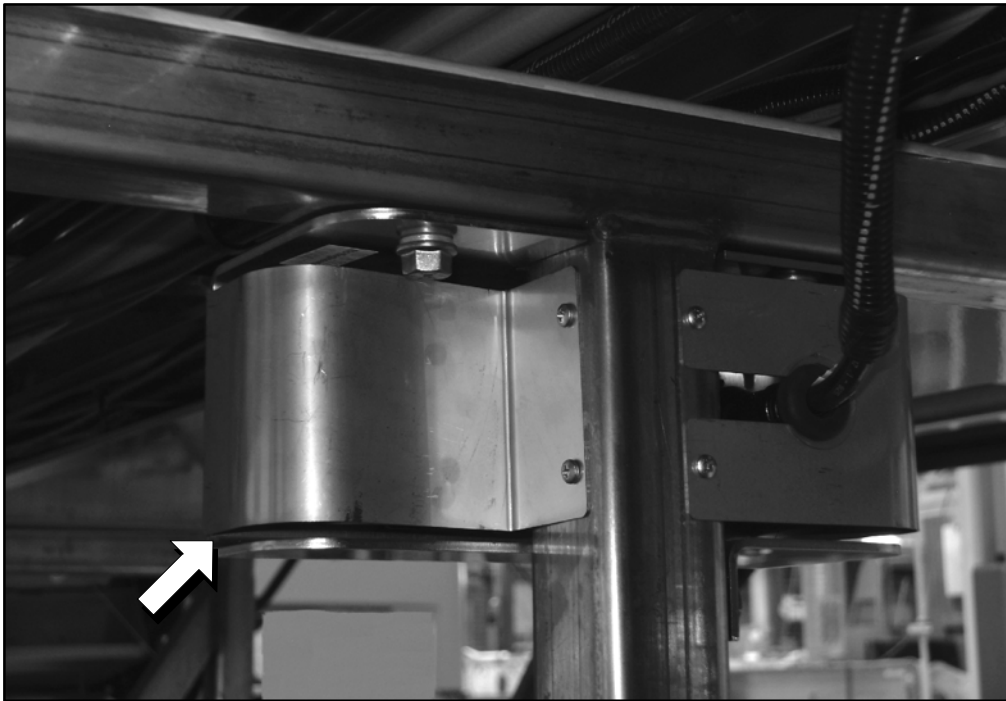
## ***NOTICE***

***Ensure to retain the existing ESC module to receive the labor allowance credited to your MCI Fleet Support Parts Account.***

7. Remove and retain the ESC module mounting hardware. Remove and retain the existing ESC module to be returned to MCI.
8. Using the mounting hardware removed in Step 7, install the new ESC module, p/n 04-31-1110.
9. Re-connect the harness disconnected in Step 6.
10. Using the mounting hardware removed in Step 4, re-install the ESC module cover.
11. Close the baggage bay compartment doors.
12. Proceed with Step 1 to Step 6 on Pages 2 to 4 of the attached Meritor–WABCO Technical Bulletin TP– 1205 / Procedures for ECUs with Software Revision E435, E436, E440 or E441, following all warnings and cautions therein.

*D Model Coach Procedure complete.*

13. Open the #3 baggage bay compartment curbside and roadside doors.
14. Locate the ESC module on the center post of the baggage bay compartment ( refer to Figure 3 ).



**Figure 3. Reference photo.**

15. Remove and retain the cover mounting hardware, place cover and hardware aside to be re–installed at a later step in this procedure.
16. Locate the electrical harness connected to the ESC module ( refer to Figure 4 ). Carefully disconnect the harness from the ESC module.



**Figure 4.**

## ***NOTICE***

***Ensure to retain the existing ESC module to receive the labor allowance credited to your MCI Fleet Support Parts Account.***

17. Remove and retain the ESC module mounting hardware. Remove and retain the existing ESC module to be returned to MCI.
18. Using the mounting hardware removed in Step 17. , install the new ESC module, p/n 04-31-1110.
19. Re-connect the harness disconnected in Step 16.
20. Using the mounting hardware removed in Step 15. , re-install the ESC module cover.
21. Close the baggage bay compartment doors.
22. Proceed with Step 1 to Step 6 on Pages 2 to 4 of the attached Meritor-WABCO Technical Bulletin TP-1205 / Procedures for ECUs with Software Revision E435, E436, E440 or E441, following all warnings and cautions therein.

*E / J Model Coach Procedure complete.*

Mail or fax the completed limited warranty claim form and verification form to MCI's warranty department, or photocopy and mail to:

MCI Fleet Support  
Attn: Warranty Department  
7001 Universal Coach Drive  
Louisville, KY 40258  
Fax Number 1-800-360-8886

to receive credit for the hours used to complete this task. Contact the MCI Fleet Support Technical Center at 1-800-241-2947 for any further information.

***Field Change Program Conditions:***

The parts required for this change will be supplied without charge.

A labor allowance of 0.8 hours will be granted for the procedure of replacing the existing ESC module and performing the steps in MW Technical Bulletin TP-1205. **NO PAYMENT WILL BE ISSUED BY MOTOR COACH INDUSTRIES UNTIL BOTH THE COMPLETED LIMITED WARRANTY CLAIM FORM AND THE EXISTING ESC MODULE HAVE BEEN RECEIVED BY MCI.**

This labor allowance will be credited to your MCI Fleet Support Parts Account on receipt of the attached "MCI Field Change Program Verification Form" and a "Warranty Claim Form" as detailed in your Owner Warranty manual to MCI's Warranty department. A "MCI Field Change Program Verification Form" needs to be submitted for each VIN affected. Photocopy the attached "MCI Field Change Program Verification Form" as required for the number of affected coaches in your fleet.

Motor Coach apologizes for any inconvenience resulting from this campaign, but urges you to implement this change as soon as possible.

Sincerely,

*Motor Coach Industries*



MOTOR COACH  
INDUSTRIES

## MCI FIELD CHANGE PROGRAM (FCP) VERIFICATION

<b>CONTACT INFORMATION</b>	
<b>CUSTOMER NAME:</b>  _____	
(PLEASE PRINT)	
<b>FCP INFORMATION – ONE FORM PER UNIT</b>	
<b>FCP#:</b> _____ <b>Coach Model</b> _____ <b>Model Year</b> _____	
<b>COACH SERIAL #:</b> (At least the last 5 digits)	<b>DATE COMPLETED</b> __ / __ / __
<b>MILEAGE:</b>	
<b><u>IMPORTANT:</u> TO RECEIVE CREDIT FOR ANY ALLOWABLE LABOR CHARGES, THIS VERIFICATION FORM MUST BE RETURNED TO MCI UPON COMPLETION OF THE FCP.</b>	
<b>SUBMITTED BY: (Please Print)</b>  _____ <span style="float: right;"><b>DATE</b> __ / __ / __</span>	
<b>TITLE: (Please Print)</b> _____	
<b>SIGNATURE:</b>  _____	
<b>COMMENTS:</b>  _____	

**FAX TO: 1-502-318-8183**

**MAILING ADDRESS:**

**MOTOR COACH INDUSTRIES  
ATTN: WARRANTY DEPT.  
7001 UNIVERSAL COACH DRIVE  
LOUISVILLE, KY 40258**

**MCI PART #03-15-7738**

# MERITOR WABCO

## Technical Bulletin

### Replacement of the ESC3 Module with the ESC5 Module on Vehicles Equipped with Electronic Stability Control (ESC) and the Calibration Procedure

Affected Part Numbers: 446 065 020 0, 446 065 027 0, 440 850 179 0, 400 850 185 0, 400 850 195 0

#### Hazard Alert Messages

Read and observe all Warning and Caution hazard alert messages in this publication. They provide information that can help prevent serious personal injury, damage to components, or both.

#### How to Obtain Additional Maintenance and Service Information

If you have any questions regarding the material covered in this bulletin, or for information about the Meritor WABCO product line, please contact the OnTrac Customer Service Center at 866-OnTrac1 (668-7221) or visit our website: meritorwabco.com

#### Description and Function

The ESC module is part of the ESC system. It measures the vehicle yaw rate as well as vehicle lateral acceleration. The ESC module includes part of the ESC control algorithm. It exchanges data with the ESC ABS ECU via the ESC system internal data link. The ABS ECU supplies the module with power and ground.

#### Field Repair Kit Part Number 400 869 024 7

The ESC Module field kit, part number 400 869 024 7, is required for completing the replacement and calibration procedure. The kit consists of the following parts.

- ESC5 Module Kit, part number 400 850 199 0
- Technical Bulletin TP-1205

**NOTE:** This replacement procedure consists of several different steps based on the type of ECU that the vehicle uses. Please carefully review the following instruction first before proceeding.

#### Identifying the Type of ECU in the Vehicle

1. Connect your laptop or PC to the vehicle.
2. Launch the Meritor WABCO TOOLBOX® Diagnostic Software and click on the Pneumatic ABS Icon for Truck, Tractor and Buses. Figure 1.

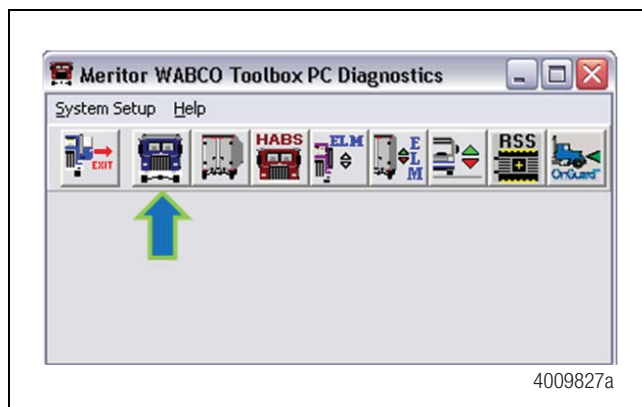


Figure 1

3. In the main ABS ECU screen, locate the field for the ECU software version. Figure 2.

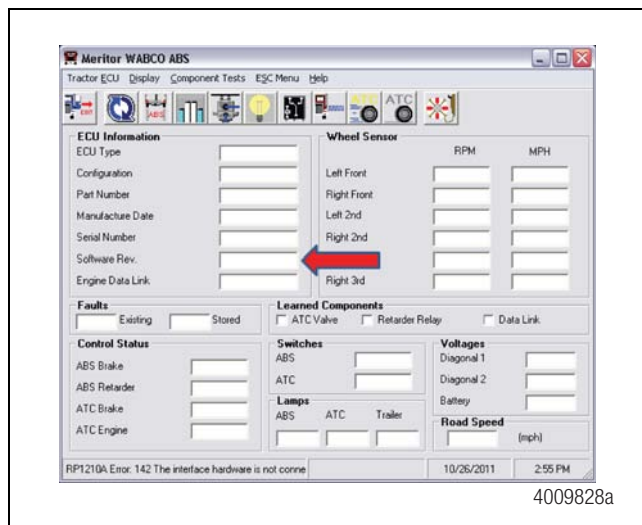


Figure 2

- Once the ECU revision is located, please review the following table and use the applicable procedure.

Software Rev.	Procedure to Use
E435, E436, E440, E441	Use the procedures on page 2.
E404	Use the procedures on page 4.
E401	Please contact the OnTrac Customer Service Center at 866-OnTrac1 (668-7221).

## Procedures for ECUs with Software Revision E435, E436, E440 or E441

### Step 1 — Obtaining the Special Version of TOOLBOX® Software

In order to complete the Calibration Procedure for the ESC5 Module, a special version of the Meritor WABCO TOOLBOX® Diagnostic Software is required.

To obtain this special version, you will need an internet connection to perform the following.

- Type this link in Windows Explorer:  
<ftp://ftp.mwtoolbox.com/>
- When prompted, use:
  - ID >> ESC5
  - Password >> ESC5Module (case sensitive)
- Go into the folder called TOOLBOX ESC5 Update.
- Select all files in the folder and copy them into a specific folder in your laptop hard drive.
- Double click on the file "Setup.exe".

### Step 2 — Saving the Steering Ratios

- Connect your laptop or PC to the vehicle.
- Launch the Meritor WABCO TOOLBOX® Diagnostic Software and click on the Pneumatic ABS Icon for Truck, Tractor and Buses. Figure 1.
- On the main ECU screen, select from the top bar click on "ESC Menu". Figure 3.

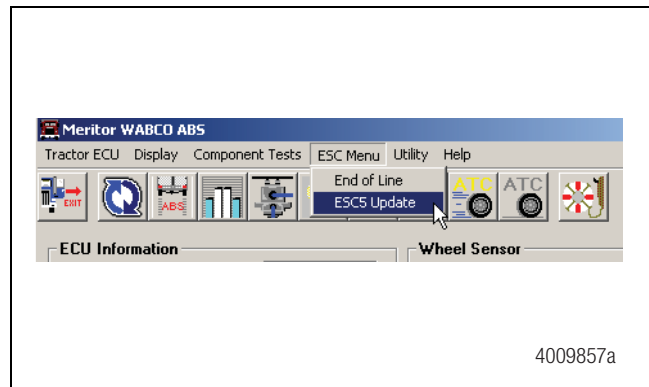


Figure 3

- Click on "ESC5 Update" Steering Ratios.

On the lower left corner of the main screen, you should see the following screen. Figure 4.

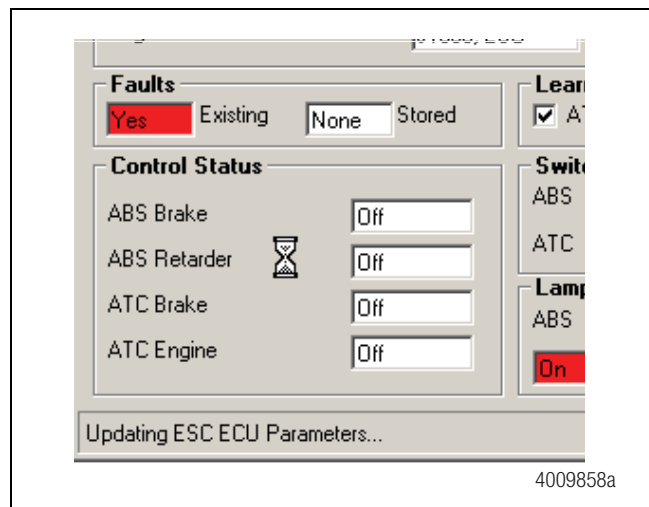


Figure 4

Once the system completes the process, the following message will be displayed. Figure 5.

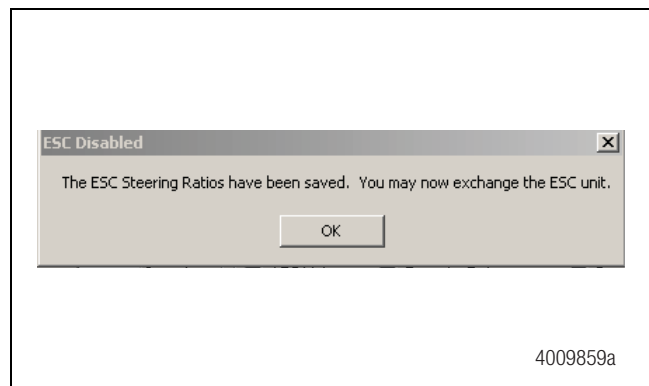


Figure 5

- Turn the ignition OFF.

### Step 3 — Removing the ESC3 Module

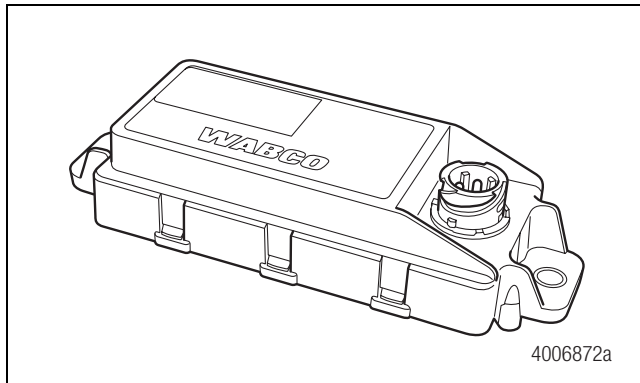
**Tools** — To complete this procedure, you will need a wrench or a ratchet appropriate for the type of capscrews used to attach the ESC Module (ESC3) to the frame cross member.

#### **WARNING**

To prevent serious eye injury, always wear safe eye protection when you perform vehicle maintenance or service.

**Park the vehicle on a level surface. Block the wheels to prevent the vehicle from moving. Support the vehicle with safety stands. Do not work under a vehicle supported only by jacks. Jacks can slip and fall over. Serious personal injury and damage to components can result.**

1. Park the vehicle on a level surface with the steering wheel centered and the front wheels positioned straight ahead.
2. Turn the ignition switch to the OFF position and apply the parking brake.
3. Block the wheels to prevent the vehicle from moving.
4. If necessary, raise the vehicle off the ground and place safety stands under the vehicle.
5. Disconnect the wiring harness connector from the ESC Module.
6. Remove the two mounting capscrews and nuts. Remove the ESC Module. Figure 6.



**Figure 6**

### Step 4 — Installing the New ESC5 Module

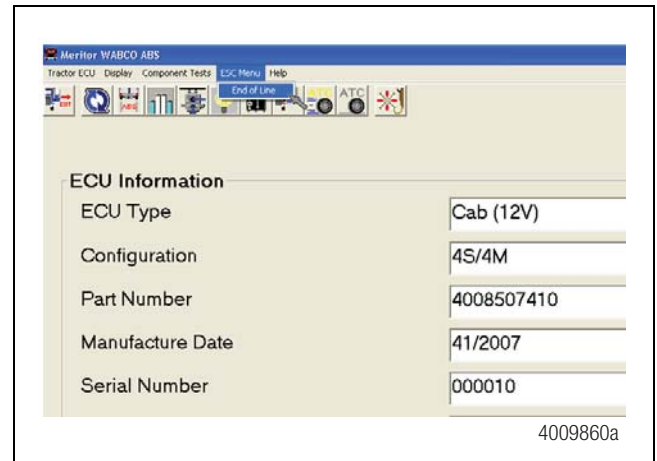
**NOTE:** It is important that the module is aligned correctly and the tab on the ESC module mounting surface fits into the appropriate hole.

1. Install the new ESC5 module included in the kit with the two capscrews and nuts. Tighten the capscrews per the manufacturer's recommendation.

2. Connect the wiring harness connector to the ESC Module. Hand-tighten only.
3. Remove the stands and blocks.

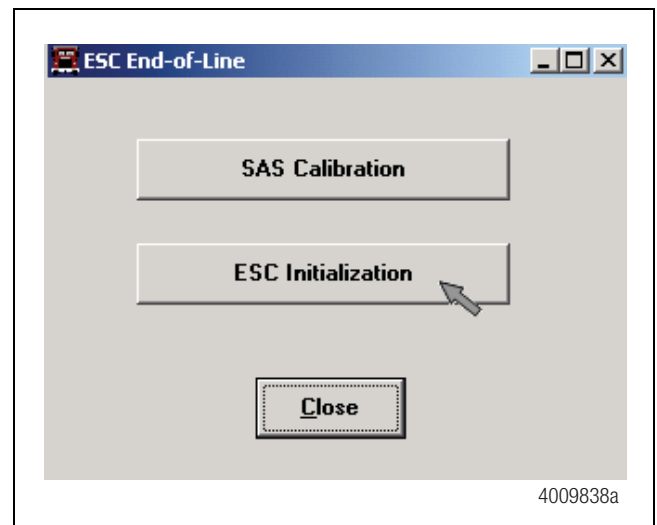
### Step 5 — Calibrating the ESC System Straight Driving Portion

1. Turn the ignition ON.
2. On the main screen, select "ESC Menu" and select "End of Line". Figure 7.



**Figure 7**

3. Click on "ESC Initialization". Figure 8.



**Figure 8**

4. Check the message box. Figure 9.



**Figure 9**

5. Press the space bar or click “Continue” when ready to proceed.
6. Carefully follow the instruction from the message box.

The Stability Light will start blinking when the 15 mph speed has been reached.

When straight driving is completed after about 800 feet, the Stability Light will stop blinking and will be ON solid.

**NOTE:** The Straight driving can be done in segments and the ECU will accumulate the information until the 800 feet are reached, but it must be done in the same ignition cycle.

## Step 6 — Testing the ESC System

When the ESC Calibration Procedure is completed, the ABS and ATC/ESC lamps should come on and go back off when ignition power is turned on. The ATC/ESC lamp may remain on briefly after the ABS lamp goes off.

There should not be any active faults displayed in the ECU memory.

## Step 7 — Disposing of Removed Parts

Meritor WABCO requires that the ESC module removed from the vehicle be destroyed and disposed. The recommended method for destruction of the ESC Module is to drill a steel bit through the electric connector.

# Procedures for ECUs with Software Revision E404

## Step 1 — Removing the ESC3 Module

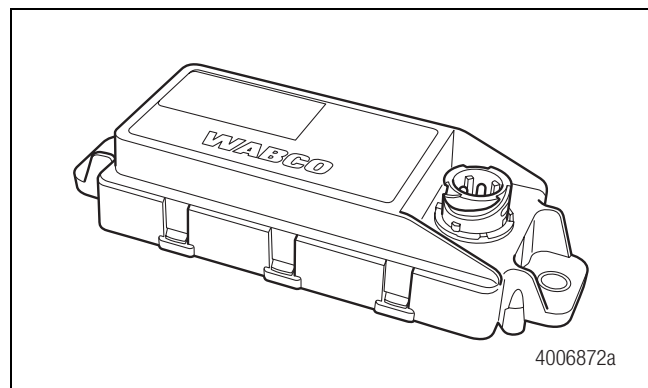
**Tools** — To complete this procedure, you will need a wrench or a ratchet appropriate for the type of capscrews used to attach the ESC Module (ESC3) to the frame cross member.

### **WARNING**

To prevent serious eye injury, always wear safe eye protection when you perform vehicle maintenance or service.

**Park the vehicle on a level surface. Block the wheels to prevent the vehicle from moving. Support the vehicle with safety stands. Do not work under a vehicle supported only by jacks. Jacks can slip and fall over. Serious personal injury and damage to components can result.**

1. Park the vehicle on a level surface with the steering wheel centered and the front wheels positioned straight ahead.
2. Turn the ignition switch to the OFF position and apply the parking brake.
3. Block the wheels to prevent the vehicle from moving.
4. If necessary, raise the vehicle off the ground and place safety stands under the vehicle.
5. Disconnect the wiring harness connector from the ESC Module.
6. Remove the two mounting capscrews and nuts. Remove the ESC Module. Figure 10.



**Figure 10**

## Step 2 — Installing the New ESC5 Module

**NOTE:** It is important that the module is aligned correctly and the tab on the ESC module mounting surface fits into the appropriate hole.

1. Install the new ESC5 module included in the kit with the two capscrews and nuts. Tighten the capscrews per the manufacturer's recommendation.
2. Connect the wiring harness connector to the ESC Module. Hand-tighten only.
3. Remove the stands and blocks.

## Step 3 — Calibrating the ESC System Straight Driving Portion

1. Connect your laptop or PC to the vehicle.
2. On the main Screen, click "ESC Menu" and select "End-Of-Line". Figure 11.

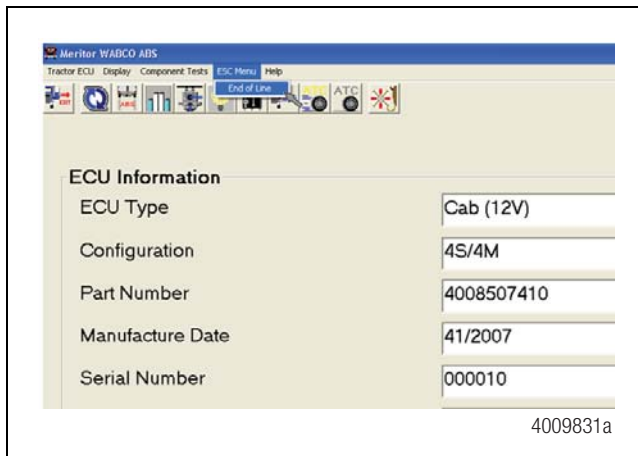


Figure 11

3. Click on "ESC Initialization". Figure 12.

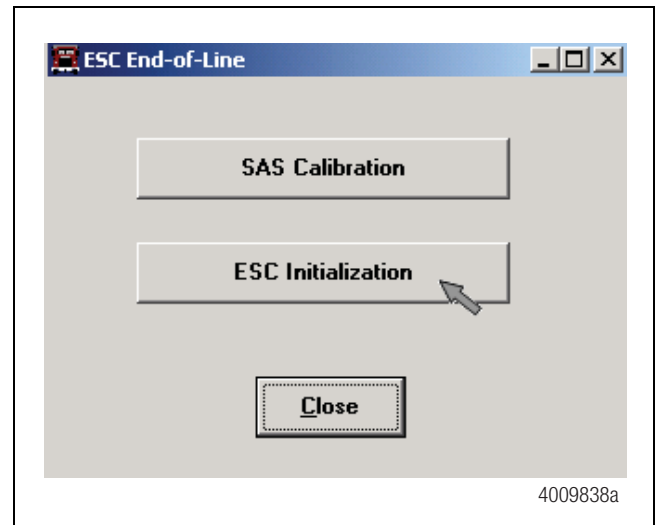


Figure 12

4. Check the message box. Figure 13.



Figure 13

5. Press the space bar or click "Continue" when ready to proceed.
6. Carefully follow the instruction from the message box.

The Stability Light will start blinking when the 15 mph speed has been reached.

When straight driving is completed after about 800 feet, the Stability Light will stop blinking and will be ON solid.

**NOTE:** The Straight driving can be done in segments and the ECU will accumulate the information until the 800 feet are reached, but it must be done in the same ignition cycle.

## Step 4 — Calibrating the ESC System Steering Ratio Portion

1. After completing the Straight Driving Portion, the next message will appear. Carefully read the message box and follow the instructions. Figure 14.

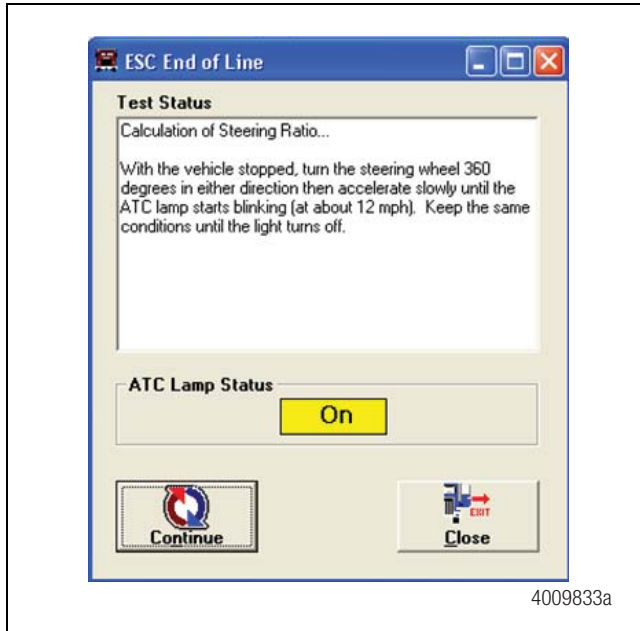


Figure 14

2. Turn the steering wheel 360 degrees in either direction and begin driving.

**NOTE:** The Circle driving may also be done in segments and the ECU will accumulate the information until the desired distance is reached, but it must be done in the same ignition cycle.

The ATC/Stability Light will start blinking when the required conditions are met. Keep driving until the light turns off. Figure 15.



Figure 15

3. Stop the vehicle. Turn the steering wheel 360 degrees in the opposite direction and repeat the driving conditions.

Again, the Stability Light will start blinking when the required conditions are met. Keep driving until the light turns off. Figure 16.

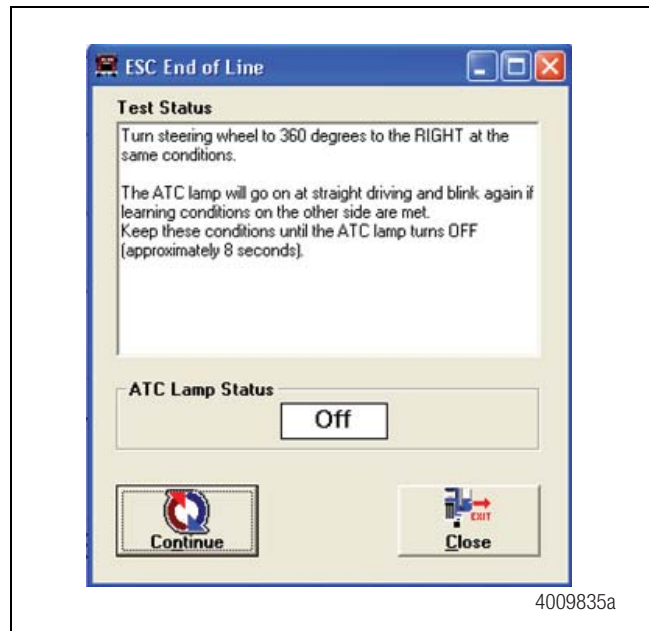


Figure 16

4. A Message box with the Steering Ratio and Steering Angle Offset values will appear. Click "Close". Figure 17.

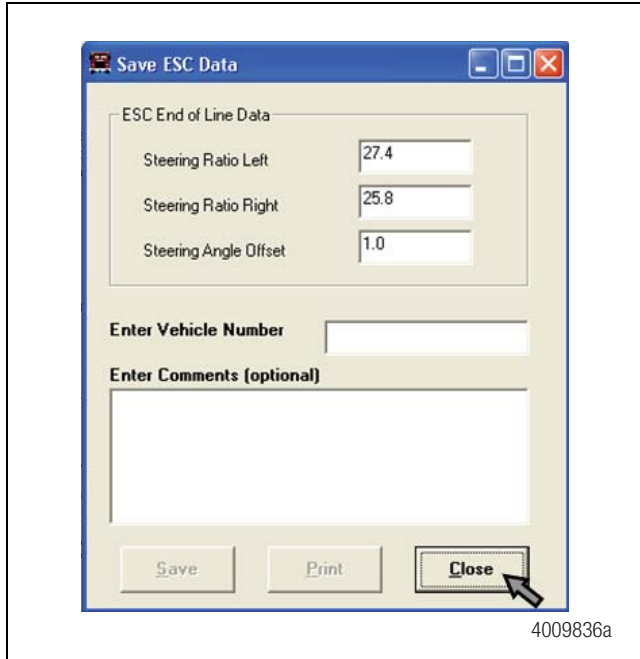


Figure 17

5. Read the message box and follow the instructions very carefully. Click "Close" and Cycle the Ignition. Figure 18.

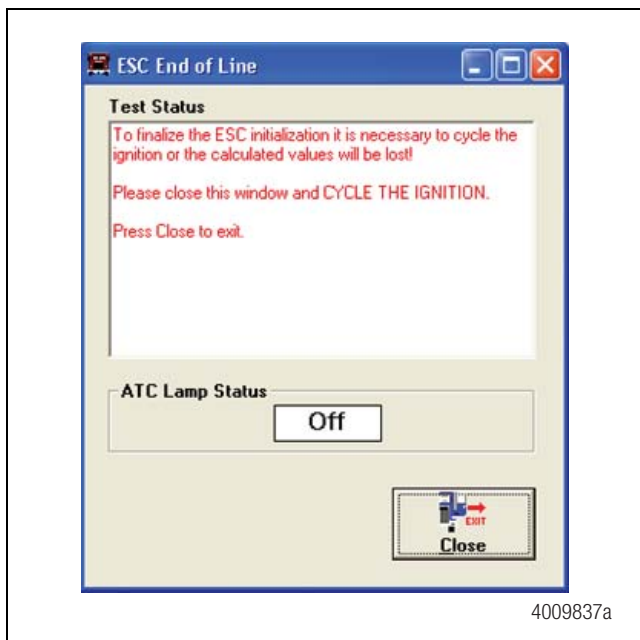


Figure 18

## Step 5 — Testing the ESC System

When the ESC Calibration Procedure is completed, the ABS and ATC/ESC lamps should come on and go back off when ignition power is turned on. The ATC/ESC lamp may remain on briefly after the ABS lamp goes off.

There should not be any active faults displayed in the ECU memory.

## Step 6 — Disposing of Removed Parts

Meritor WABCO requires that the ESC module removed from the vehicle be destroyed and disposed. The recommended method for destruction of the ESC Module is to drill a steel bit through the electric connector.

## **MERITOR WABCO**

**Meritor WABCO Vehicle Control Systems**  
2135 West Maple Road  
Troy, MI 48084-7121 USA  
866-OnTrac1 (668-7221)  
meritorwabco.com

Information contained in this publication was in effect at the time the publication was approved for printing and is subject to change without notice or liability. Meritor WABCO reserves the right to revise the information presented or to discontinue the production of parts described at any time.

Copyright 2011  
Meritor, Inc.  
All Rights Reserved

Printed in USA

TP-1205  
Issued 12-11  
(16579)