



**RE: BODY SERIAL  
CHASSIS SERIAL**

Dear Owner:

This notice is being sent to you in accordance with the requirements of the National Traffic and Motor Vehicle Safety Act. Our records indicate that you have purchased a vehicle with the serial number which appears above. If you have paid to have this defect corrected, you may be eligible for reimbursement. To be eligible, you must meet the requirements described in the enclosed Reimbursement Plan Notice.

**REASON FOR THIS RECALL**

Winnebago Industries, Inc. has determined a noncompliance exists on 2012 model Winnebago ERA<sup>®</sup> motor homes built on 11,030-lb. GVWR chassis. These motor homes were manufactured from November 11, 2010 through July 13, 2011. The affected vehicles were produced with a tire and loading information label and a weight of water caution label to comply with 49CFR 571.110. In previous model years, this labeling would be correct as the GVWR of this model was 8,850 lbs. However, starting in 2012 model year, this vehicle GVWR was increased above 10,000 lbs. and 49CFR 571.120 is now in affect versus 571.110, and the tire and loading label is replaced by the CCC version.

**OWNER NOTIFICATION**

Winnebago Industries, Inc. will replace the vehicle weight labels at no charge to you. A new label is enclosed with this notice.

**WHAT YOU SHOULD DO**

Follow the enclosed instructions for installation of the occupant and cargo carrying capacity label.

After the new label is installed, please complete the enclosed pre-addressed, postage-paid postcard and mail to Winnebago Industries, Inc.

Should you be unable to install the new occupant and cargo carrying capacity label yourself, please contact your Winnebago Industries, Inc. dealer immediately to arrange for an appointment. The labor time necessary to perform this correction will be approximately 15 minutes. Please allow time for the dealer to process your vehicle.

Winnebago Industries, Inc. dealers are best equipped to obtain parts and provide service to ensure your vehicle is corrected as promptly as possible. HOWEVER, if you take your vehicle to the dealer on the agreed date and he does not service this condition on that date or within five days, we recommend you contact Winnebago Industries, Inc., Attn.: Owner Relations Representative (641-585-6939). If you are still unable to obtain such installation without charge to you and within a reasonable time, you may contact the Administrator, N.H.T.S.A., Washington, DC 20590, or call toll-free, Auto Safety Hot Line, 888-327-4236.

Body Serial/Chassis Serial  
Page Two

Presentation of this letter to the service center will assist in making the necessary correction to your vehicle in the shortest possible time. If you have sold or traded your vehicle, please let us know by completing the postage-paid owner reply card and returning it to us.

Federal law requires that any vehicle lessor receiving this recall notice must forward a copy of this notice to the lessee within ten days.

We are sorry to cause you this inconvenience; however, we have taken this action in the interest of your safety and continued satisfaction with our products. This letter does not constitute an acknowledgment of legal liability.

---

Winnebago Industries, Inc.  
Forest City, Iowa 50436

Enclosure



# INSTRUCTIONS TO PERFORM CAMPAIGN 123

## Models Affected:

2012 model year Winnebago Industries Era® (Model 170X) motor homes.

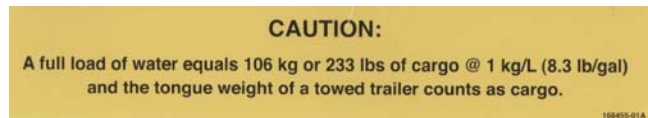
These motor homes were manufactured November 11, 2010 through July 13, 2011.

## Kit Includes:

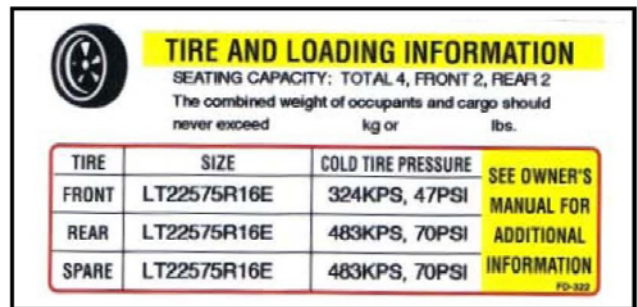
- (1) Occupant and Cargo Carrying Capacity Label
- Instructions

## Procedure:

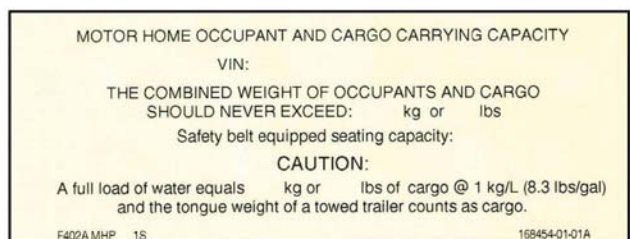
The affected vehicles were produced with incorrect Vehicle Weight Information Labels located along side the driver door frame (Labels 1 and 2). These labels must be removed and replaced with the correct one (Label 3).



**Incorrect Water Weight Caution Label (Label 1)**



**Incorrect Tire and Loading Information Label (Label 2)**



**Correct Occupant and Cargo Carrying Capacity Label (Label 3)**

*\* Provided in kit*

1. Remove and discard existing Water Weight Caution Label (Label 1). See Photo A.



2. Remove and discard existing Tire and Loading Information Label (Label 2), which will reveal the chassis manufacturer's black Tire Inflation Pressure Label. See Photos B and C.



3. Cover the existing black Tire Inflation Pressure Label with the correct Occupant and Cargo Carrying Capacity Label (Label 3). See Photo D.



4. Installation complete. See Photo E.



*After the new Occupant and Cargo Carrying Capacity Label is installed, please complete the enclosed pre-addressed postage paid postcard and mail to Winnebago Industries®.*