



210 Inverness Center Drive
Birmingham, AL 35242

Telephone: 205-991-7733
Facsimile: 205-991-9993
www.altec.com

August 8, 2011

Dear Altec Owner,

This notice is sent to you in accordance with the requirements of the National Traffic and Motor Vehicle Safety Act, and Canada Motor Vehicle Safety Act.

Altec Industries, Inc. has decided that a defect which relates to motor vehicle safety exists in certain DC912A and WC126A/166A Chipper Units. These units may have cracks in the axle spindle resulting in broken spindles. If the spindle breaks, a wheel could become detached from the chipper trailer and death or serious injury may result.

Refer to MAB 547 for parts, labor and travel covered under the warranty policy. Altec will supply, for those units affected, a replacement axle to correct this condition.

In order to determine if your unit is affected by MAB 547, compare the serial number of your unit with the list of affected units as described on the MAB. The repair can be performed by the customer or you may contact Altec at 1-877-GO-ALTEC (1-877-462-5832) for further assistance.

For US owners: after contacting Altec, if you are still not able to have the safety condition remedied within a reasonable time, you may write to: Administrator, National Highway Traffic Safety Administration, 1200 New Jersey Avenue SE, Washington, DC 20590 or call 1-888-327-4236 (TTY: 1-800-424-9153) or go to <http://www.safercar.gov>.

For Canadian Owners: if you are still not able to have the safety condition remedied by your dealer within a reasonable time, please contact Altec Customer Service at 1-877-GO-ALTEC (1-877-462-5832).

If you had this repair performed before you received this letter, you may be eligible to receive reimbursement for the cost of obtaining a pre-notification remedy of the problem associated with this recall. If you have sold or retired the unit please call Altec at 1-877-GO-ALTEC (1-877-462-5832) so the records may be changed.

If you have leased this equipment to another person or company, you are required by Federal Law to forward a copy of this notice to the lessee by first class mail within ten (10) days of the receipt of this notice.

We are sorry to cause this inconvenience; however we are taking this action in the interest of your safety and continued satisfaction with Altec products.

Thank you for your immediate attention on this important matter.



Altec Environmental
Products, LLC
Shelby, NC

MAB 547

MANDATORY ACTION BULLETIN

Date: August 8, 2011

Units Affected: DC912A Chippers (chassis s/n ending with 9S200342 through BS200265)
WC126A/166A Chippers (chassis s/n ending with AS200311 through BS200479)

Axle Spindle Inspection and Replacement

This Mandatory Action Bulletin requires immediate action.

This Mandatory Action Bulletin requires immediate inspection of the chipper transport axle. Altec has received reports of spindle failures on these axles. A spindle failure can allow the transport wheel and brake hub to separate from the axle. **Death or serious injury can result from the failure of the axle spindle.**

Axles on all affected chippers must be replaced within 60 days of receipt of the MAB. Call 1-877-435-9258 to arrange for an axle replacement. Chipper owners must take the following action before the chipper is towed to the next job.

All affected DC912A and certain WC126A/166A Chippers are included in this MAB. The WC126A/166A Chipper used two axle suppliers. These units must first be inspected to determine if the axle is included in this Mandatory Action Bulletin (refer to top of Page 2). Follow the bullet points below for all affected units.

- Complete a preoperational inspection looking for any abnormal tilt (wheel camber) of either chipper trailer wheel. If any tilt or possible abnormality of the wheel position is seen, **DO NOT TOW THE CHIPPER**. The unit must not be towed on a public roadway until the axle has been replaced.
- If the preoperational inspection does not reveal any abnormal tilt (wheel camber) of the wheel, and the chipper is needed for immediate use, have both spindles inspected as outlined in this bulletin. Until the axle has been replaced or spindles have been inspected, the chipper can only be towed on a public roadway to a facility where the service can be performed. If no cracks are found during the inspection, the chipper can continue to be towed to jobs until the axle is replaced or 60 days have passed from the date the spindle was inspected. If a spindle crack is discovered, the chipper must not be towed on a public roadway until the axle is replaced.
- The only alternative to performing the above inspections is to immediately stop towing the chipper and contact Altec at 1-877-435-9258 to order an axle and to schedule the replacement. The chipper must not be towed on a public roadway until the axle has been replaced.

MAB 547

Determining if axle on WC126A/166A is affected:

The two different axles on WC126A/166A Chippers can be identified by their shape (refer to Figure 1). If the axle tube is approximately 3 inches wide and square in shape, the MAB does not apply and the chipper can be returned to service. If the axle tube is approximately 4⁵/₈ inches wide and hexagonal in shape, the MAB applies to this unit and it **MUST** be inspected as described in this MAB.



Figure 1 — WC126A/166A Axle Identification



Inspection of affected units:

Customers or the customer's Altec warranty provider can perform this inspection using the following procedure. Normal hand tools and a jack capable of lifting the chipper are required for this inspection. Read and understand all steps of the instructions before beginning the procedure.

1. Park the chipper on a hard, flat surface and chock the wheels.
2. Position the jack under the chipper frame so raising the jack will lift one wheel off the ground. Raise the jack to remove the weight from the wheel.
3. Use a plastic or dead blow hammer to remove the grease cap at the end of the spindle.
4. Remove the cotter pin securing the castle nut and remove the castle nut and washer from the spindle (refer to Figure 2).

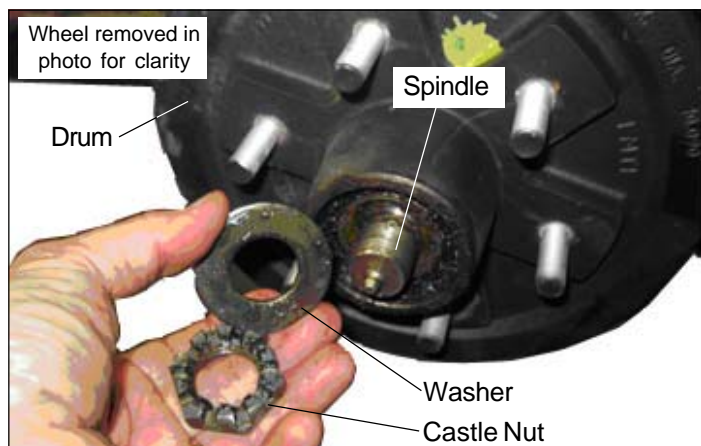


Figure 2 — Spindle Components

5. Securely grasp each side of the tire and rock it to loosen the wheel and brake drum from the spindle. Slide the wheel, drum, and bearings straight off the spindle. The inside grease seal and outside bearing should stay in the brake hub.
6. Wipe the remaining grease from shoulder of the spindle near the brake assembly.
7. Look for the lubrication cross drill hole on the shoulder of the spindle (refer to Figure 3).
8. Carefully look for any evidence of cracks along the base of the shoulder. Look at each side of the lubrication hole for cracks starting at the hole and radiating out along the shoulder (refer to Figure 4).
9. If any cracks are found, take the chipper out of service until the axle is replaced.

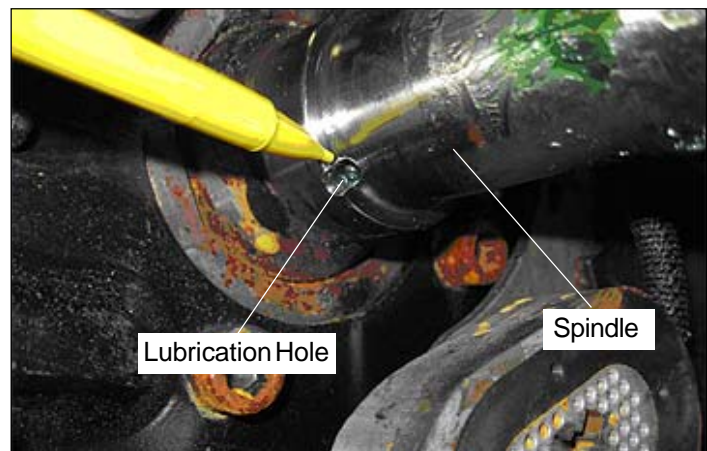


Figure 3 — Locating Lubrication Hole

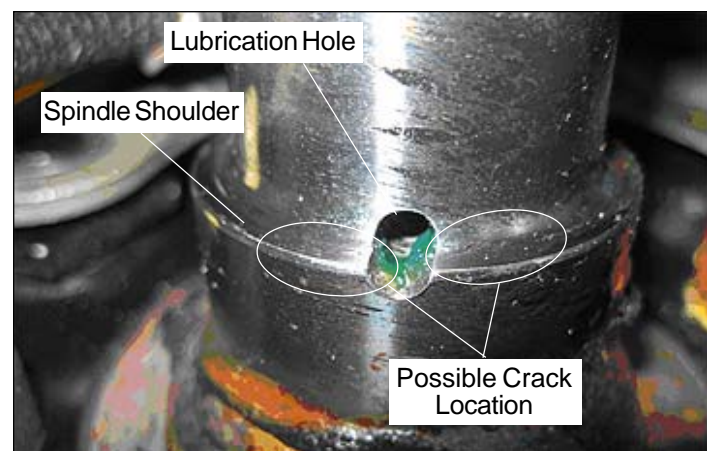


Figure 4 — Identifying Cracks

10. If no cracks are found, carefully reassemble the wheel, drum, bearings, and seals on the spindle. Install the washer and castle nut, but do not tighten.
11. Slowly turn the wheel and brake drum while tightening the castle nut to approximately 20 ft-lb. Loosen the nut. Hold the wheel and drum and retighten the castle nut to 7 ft-lb. Loosen the castle nut one slot to align the slot with the cotter pin hole. Insert the cotter pin to secure the nut. Use a grease gun to grease the spindle bearings. Install the grease cap. Lower the jack.
12. Perform Steps 2 through 11 on the remaining wheel and spindle. If no cracks are found, the chipper can continue to be towed if the daily preoperational inspection is done every time before towing the chipper and the disassembly inspection has been completed within the last 60 days, or if the axle has been replaced.

Determine the part number of the replacement axle from the chart below.

MODEL	AXLE PART NUMBER
DC912A	970180429
WC126A/166A	970234729

This repair is covered under the Altec Warranty Policy and can be performed by Altec or the customer's Altec warranty provider. Altec will allow up to \$75 for the labor to perform an inspection and up to \$200 to replace the axle. A warranty claim must be submitted for the cost of the labor. Call 1-877-435-9258 to order the axle or to schedule the work to be done by an Altec service technician. Customers are responsible for the travel costs of an Altec Mobile Service technician if the technician performs the inspection or repair at the owner's location.