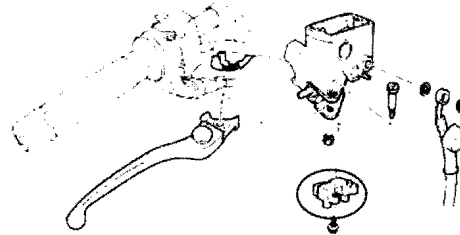


Technical Bulletin: 2011-XXR
2011 FJR13AAS/ AASC
Factory Modification Campaign: Front Brake Switch

INTRODUCTION

Yamaha Motor Corporation, U.S.A. has decided that a defect which relates to motor vehicle safety exists in certain 2011 FJR13AAS and AASC motorcycles. On affected motorcycles, the brake light may not illuminate when the front brake lever is applied because the activating mechanism in the front brake switch can bind. If the brake light does not come on to alert other drivers when the motorcycle operator applies only the front brake, there could be a crash resulting in injury or death.



To correct this problem, Yamaha is initiating a Factory Modification Campaign. Affected units must have a new front brake switch installed.

Yamaha is notifying all registered owners of affected motorcycles by mail. A copy of this letter is included in this bulletin. The customer should take the letter along with the affected motorcycle to an authorized Yamaha dealer for the modification.

A computer report listing all affected motorcycles invoiced to your dealership is included with this bulletin. Use the list to help ensure all motorcycles are modified. All sold motorcycles that have been registered with Yamaha will show the customer's name and address. Your dealership must notify the owner of any affected motorcycle that was actually sold but is listed as "unsold" in the report.

You must modify all affected motorcycles in your inventory as well as all customer-owned motorcycles brought to you for this service. Any affected motorcycle that you purchase from Yamaha in the future will also require modification. If you purchase a motorcycle from another dealer, check to see if the procedures in this bulletin have already been performed before you sell the motorcycle.

Motorcycles that are affected should not be operated until they are modified. It is a violation of Yamaha policy for your dealership to deliver any affected motorcycles to customers until the procedures in this bulletin are performed.

When the modification on each motorcycle is performed, follow the Warranty Information section of this bulletin to receive reimbursement. Be sure to use the Factory Modification Campaign procedures in Chapter 7 of the **Warranty and Y.E.S. Handbook** (LIT-11760-00-08).

DEALER ACTION SUMMARY

- Unsold Units:** Install a new front brake switch during PDI service.
- Sold Units:** Install a new front brake switch. Check first to be sure the modification has not already been performed (see Identification Procedure section in this bulletin).
- Parts:** Yes, order a new front brake switch for each affected unit. See the *Parts Information* section for details, including how to identify original and new brake switches.
- Warranty:** Factory Modification Campaign. See the *Warranty Information* section of this bulletin. This modification applies to all affected units regardless of ownership or warranty status.
- Notify Customer:** Yes. You must immediately contact any customer whose motorcycle shows as unregistered on the enclosed report. Yamaha has sent letters to customers whose motorcycles were registered for warranty as of xx/xx/xx.

AFFECTED RANGE

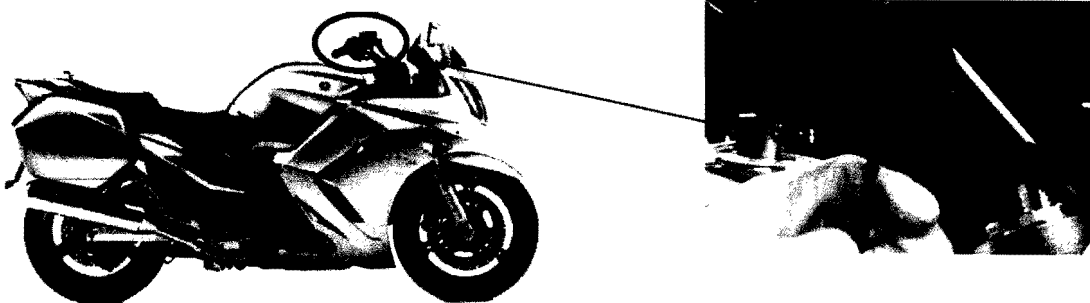
FJR13AAS
RP15E-007504~007734

FJR13AASC
RP15Y-001311~001345

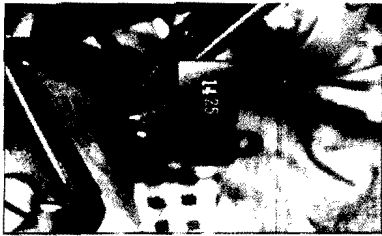
SERVICE PROCEDURE:

Necessary tool: Phillips screwdriver; Size No.2 (Short type)

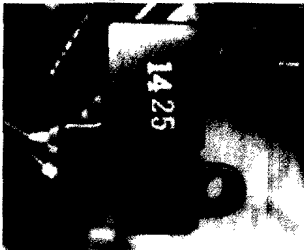
1. Remove the screw holding the front stop switch assembly. Keep the screw for reuse.



2. Disconnect the two couplers from front stop switch assembly.



3. Replace front stop switch assembly with new one.
4. Connect the two couplers.
TIP: There is no coupler polarity.
5. Install the front stop switch on front master cylinder, with the projection on front stop fitting into the corresponding hole in the master cylinder.



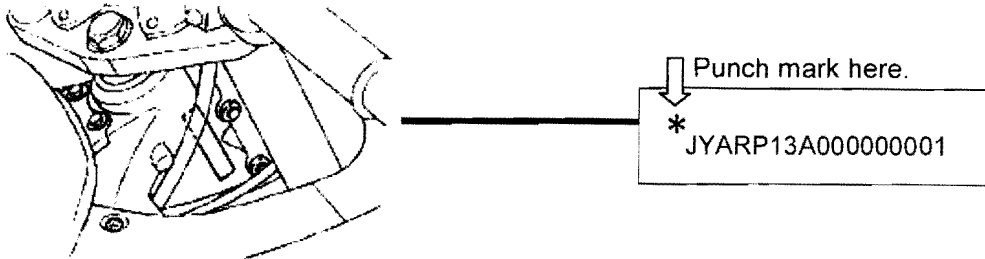
6. Reinstall and tighten the mounting screw.
Tightening torque: 0.8~1.5 Nm (0.08~0.15 m·kg, 0.6~1.1 ft·lb)



7. Turn on the ignition switch and squeeze the front brake lever to confirm correct operation of the brake light.
8. Place a punch mark above the Vehicle Identification Number (VIN) on the frame as described in the Identification Procedure below.

IDENTIFICATION PROCEDURE

After modifying a unit, make a punch mark above the vehicle identification number (VIN) as shown in the illustration. Check for this punch mark if you encounter an unfamiliar unit. You can also check unit status on YDS or by contacting your Regional Technical Advisor.



PARTS INFORMATION

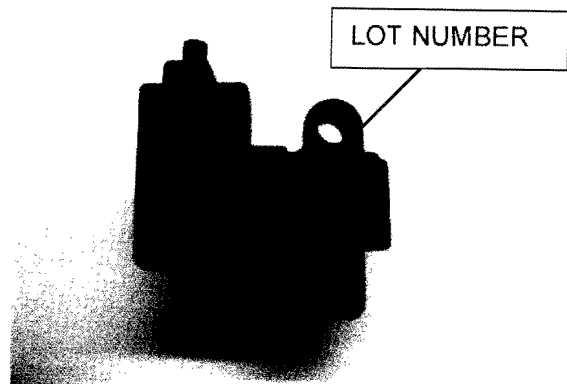
PART NUMBER	Description	Qty	Dealer Cost
3P6-83980-00-00	Front Stop Switch Assembly	1	\$16.28

Replacement parts in inventory are all of the corrected type.

Part Identification

The lot numbers of defective parts are "0X15" through "1419." The lot numbers are a date code as follows:

- Ex: 0 X 15
- Year/ month/ date**
- How to read year:
- 0: 2010
- 1:2011
- How to read month:
- 1: January
- 2: February
- 3: March
- 4: April
- 5: May
- 6: June
- 7: July
- 8: August
- 9: September
- X: October
- Y: November
- Z: December



Therefore, the 0X15 example shown in the photo is October 15th, 2010, production (needs replacement). The lot numbers of corrected parts begin with "1420," which is April 10, 2011 or later.

Be sure to check your dealership's inventory. If you have any affected Front Stop Switch Assembly parts in stock, return them to Yamaha using standard Quality Assurance procedures.

WARRANTY INFORMATION:

The owner of each registered unit will receive a letter announcing this campaign. The customer's letter includes the Primary ID and Recall Number.

The modification is authorized for all motorcycles, both sold and unsold, regardless of ownership or warranty status. You do not need the customer's letter to perform the modification or to file for reimbursement.

Submit a Recall Request for the parts and labor for FJR Front Brake Switch as described below using Recall Number **9900XX**. The labor allowance is **0.2 hour**.

YDS:

When signed on to YDS, click on the Service Tab, and then "Recall Request-Add." This function will allow you to enter multiple Primary IDs for the same recall. Remember that YDS requires a 7-digit serial number, so use a "0" as the first digit. The system will check your submission instantly to make sure the Primary ID numbers you've entered are valid for the recall. You can check back the next day for your claim numbers to track your credit.

MAIL:

Complete a recall Reimbursement Request (LIT-11790-00-03) as shown below:

If you have any questions about proper procedures for Factory Modification Campaigns, see Chapter 7 in your **Warranty and Y.E.S. Handbook** (LIT-11760-00-08).