



TO: Winnebago Industries, Inc. Dealers

SUBJECT: Campaign #122 – LP Line Interference

The National Traffic and Motor Vehicle Safety Act, as amended, provides that each vehicle which is subject to a recall campaign of this type must be adequately repaired within a reasonable time after the owner has tendered it for repair. A failure to adequately repair within 60 days after tender of a vehicle is prima facie evidence of failure to repair within a reasonable time.

If the condition is not adequately repaired within a reasonable time, the owners may be entitled to an identical or reasonably equivalent vehicle at no charge or to a refund of the purchase price less a reasonable allowance for depreciation.

To avoid having to provide these burdensome solutions, every effort must be made to promptly schedule an appointment with each owner and to repair their vehicle as soon as possible. As you will see in reading the enclosed copy of the letter which is being sent to owners, the owners are being instructed to contact Winnebago Industries, Inc. if you do not remedy the condition within five days of the mutually agreed upon service date. If the condition is not remedied within a reasonable time, they are instructed on how to contact the National Highway Traffic Safety Administration.

REASON FOR THIS RECALL

The motor vehicles potentially containing the defect are on certain: 2011 Model Year Winnebago® (Model: Tour® R42AD) and 2011 Model Year Itasca® (Model: Ellipse® R42AD). These motor homes were manufactured August 9, 2010 through January 21, 2011.

These vehicles have the potential for a LP hose connection to be damaged when the slideout room is operated. If the LP hose makes contact with the slideout ram, it could be disconnected. If this were to happen, a leak would occur when the LP tank is opened. The leaking LP then has the potential to ignite, which could result in personal injury or death.

OWNER NOTIFICATION

Owners will be notified of this campaign on their vehicles by Winnebago Industries, Inc. For all units in your inventory, the notification will be mailed to you. **DO NOT DELIVER TO A CUSTOMER ANY SUBJECT UNIT UNTIL CORRECTIVE ACTION HAS BEEN TAKEN.** Enclosed is a list of vehicles shipped to you.

DEALER CAMPAIGN RESPONSIBILITY

Dealers are to service all vehicles subject to this campaign at no charge to owners regardless of mileage, age of vehicle, or ownership from this time forward.

Whenever a vehicle subject to this campaign is taken into new or used vehicle inventory or it is in your dealership for service in the future, you should take the steps necessary to be sure the campaign correction has been made before reselling or releasing the vehicle. Owners of vehicles recently sold from your new vehicle inventory are to be contacted by the dealer and arrangements made to make the required correction according to instructions contained in this campaign.

INSTRUCTION TO PERFORM CAMPAIGN #122

Affected Models:

Certain 2011 Winnebago:
Tour® (R42AD)

Certain 2011 Itasca:
Ellipse® (R42AD)

Repair Procedure:

Refer to instruction sheet for inspection and clamping of the LP line.

REIMBURSEMENT

When the service has been completed, submit the labor amount and labor operation number listed below. Your repair order must be properly signed by both the dealer and the owner.

	<u>OPERATION NUMBER</u>	<u>TIME ALLOWANCE</u>
Ensure LP Line Clearance	<u>24220101</u>	<u>0.8 hr.</u>

Thank you for your cooperation.

Winnebago Industries, Inc.
Forest City, Iowa 50436

Enclosures



**RE: BODY SERIAL
CHASSIS SERIAL**

Dear Owner:

This notice is being sent to you in accordance with the requirements of the National Traffic and Motor Vehicle Safety Act. Our records indicate that you have purchased a vehicle with the serial number which appears above.

REASON FOR THIS RECALL

The motor vehicles potentially containing the defect are on certain: 2011 Model Year Winnebago® (Model: Tour® R42AD) and 2011 Model Year Itasca® (Model: Ellipse® R42AD). These motor homes were manufactured August 9, 2010 through January 21, 2011.

These vehicles have the potential for a LP hose connection to be damaged when the slideout room is operated. If the LP hose makes contact with the slideout ram, it could be disconnected. If this were to happen, a leak would occur when the LP tank is opened. The leaking LP then has the potential to ignite, which could result in personal injury or death.

WHAT WE WILL DO

Winnebago Industries, Inc. dealers will correct this situation at no charge to you by:

1. Checking to assure the LP hose and connection is not damaged and replace, if necessary.
2. Relocating the pipe clamp as well as adding a second clamp to the hose to ensure clearance is maintained during the operation of the slideroom.

WHAT YOU SHOULD DO

Please contact your Winnebago Industries, Inc. dealer immediately to arrange for an appointment. Please allow sufficient time for your dealer to obtain the kit for this recall. The labor time necessary to perform this correction will be approximately one hour. Please allow additional time for the dealer to process your vehicle.

Winnebago Industries, Inc. dealers are best equipped to obtain parts and provide service to ensure your vehicle is corrected as promptly as possible. HOWEVER, if you take your vehicle to the dealer on the agreed date and he does not service this condition on that date or within five days, we recommend you contact Winnebago Industries, Inc., Attn.: Owner Relations Representative (641-585-6939). If you are still unable to obtain such service without charge to you and within a reasonable time, you may contact The Administrator, National Highway Traffic Safety Administration, 1200 New Jersey Avenue S.E., Washington, DC 20590 or call the toll-free Vehicle Safety Hotline at 1-888-327-4236 (TTY: 1-800-424-9153) or go to <http://www.safercar.gov>.

Body Serial/Chassis Serial
Page Two

IF YOU HAVE PREVIOUSLY PAID FOR THIS REPAIR

If you have paid to remedy this issue, you may be eligible for a refund. To obtain information on a refund, contact Winnebago Industries Owner Relations by e-mail at or@winnebagoind.com; write us at Owner Relations Department, P.O. Box 152, Forest City, Iowa 50436; or by telephone at 1-641-585-6939 or 1-800-537-1885.

IF YOU HAVE CHANGED ADDRESS OR SOLD THE VEHICLE

If you have changed address or sold or traded your vehicle, please let us know by contacting Winnebago Owner Relations by e-mail at or@winnebagoind.com; in writing at Owner Relations Department, P.O. Box 152, Forest City, Iowa 50436; or by telephone at 1-641-585-6939 or 1-800-537-1885.

Presentation of this letter to the service center will assist in making the necessary correction to your vehicle in the shortest possible time.

Federal law requires that any vehicle lessor receiving this recall notice must forward a copy of this notice to the lessee within ten days.

We are sorry to cause you this inconvenience; however, we have taken this action in the interest of your safety and continued satisfaction with our products. This letter does not constitute an acknowledgment of legal liability.

Winnebago Industries, Inc.
Forest City, Iowa 50436

Enclosure



INSTRUCTIONS TO PERFORM CAMPAIGN 122

Models Affected:

- 2011 Winnebago Tour® and Itasca Ellipse® (Model 42AD) motor homes.

These motor homes were manufactured from August 9, 2010 through January 21, 2011.

Equipment Required:

- Lug Nut Cover Tool
- Impact Wrench
- 33 mm Socket
- Screw Gun
- Floor Jack or Hoist

Parts Needed:

- (1) LP Pipe Clamp (Winnebago® P/N 010497-03-000, or equivalent)

Procedure:

Clamp back LP pipe to allow more clearance from the front passenger side slideout ram.

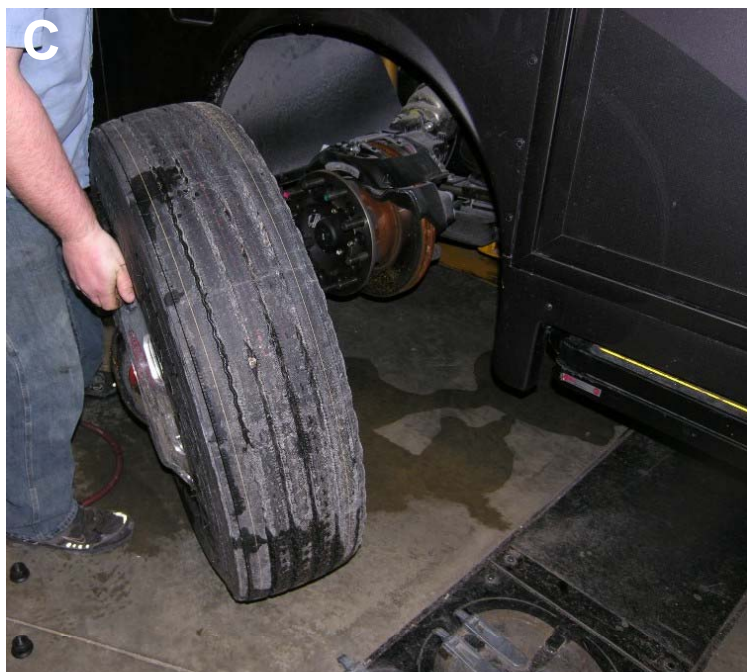
1. Shut off the LP gas on outside of coach.
2. Raise front of vehicle for front passenger side tire removal.
3. Using a lug nut cover tool, remove lug nut covers from front passenger side wheel and set aside. See Photo A.



4. Using an impact wrench and 33 mm socket, remove lug nuts and set aside. See Photo B.



5. Remove tire and set aside. See Photo C.



6. Unlock front passenger side slideout room travel lock and extend room. See Photo D.
NOTE: Switches are located near OnePlace® monitor panel in the middle of coach.

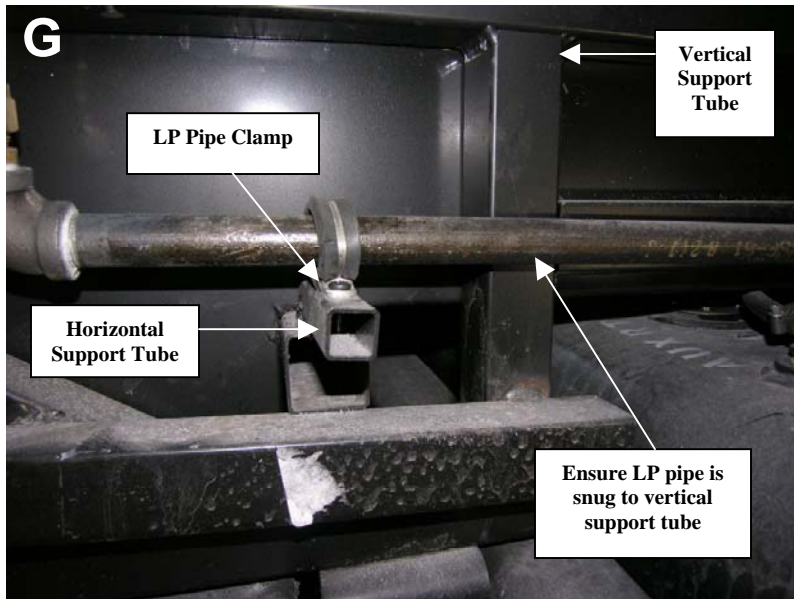


7. Using a screw gun, remove the top portion of the rubber splash guard (located to the rear of wheel well) and allow to hang loose. See Photos E and F.

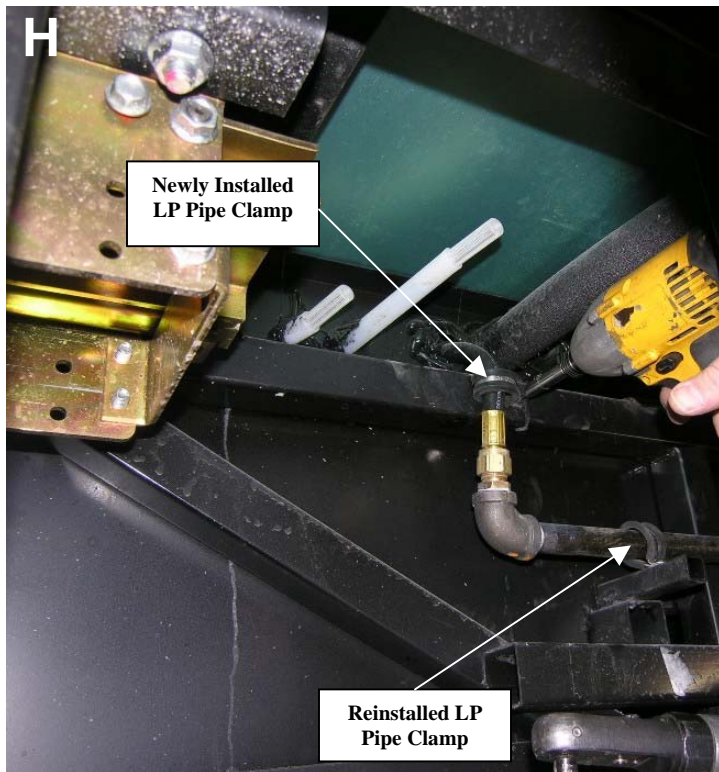


8. Inspect LP pipe and hose for damage. If any damage is present, perform required repairs before continuing this recall procedure. Contact Winnebago Industries® Technical Service Department at (866) 653-4329 for assistance as needed.

9. Ensure LP pipe is snug to vertical support tube. If not, remove LP pipe clamp and reinstall clamp (as shown), ensuring that LP pipe is snug to the vertical support tube. See Photo G.



10. Take additional LP pipe clamp and install to upper horizontal support tube. See Photo H.



11. Retract slideout room and inspect to ensure that LP pipe and LP hose have no interference.

12. Reinstall rubber splash guard. See Photo I.



13. Reinstall tire and lug nuts. See Photo J.



14. Lower vehicle to the ground.

15. Torque lug nuts to 450 to 550 ft.-lbs.

16. Reinstall lug nut covers.