

Safety Defect and Noncompliance Report Guide for Equipment  
**PART 573 Defect and Noncompliance Report**<sup>1</sup>

On March 14, 2011, Transcraft Corporation was notified by Accuride Corporation(Gunite) that a defect which relates to motor vehicle safety exists in items of motor vehicle equipment listed below, and is furnishing notification to the National Highway Traffic Safety Administration in accordance with 49 CFR Part 573 Defect and Noncompliance Reports.

Date this report was prepared: 09/19/2011

Report date is admittedly late due to the resignation of the former warranty manager, Mike Bird.

**Furnish the manufacturer's identification code for this recall (if applicable):**

Gunite Automatic Slack Adjuster – NHTSA Recall Notice No. 11E-008, Gunite Inspection Document # GUN2.0014

**1. Identify the full corporate name of the fabricating manufacturer/brand name/trademark owner of the recalled item of equipment. If the recalled item of equipment is imported, provide the name and mailing address of the designated agent as prescribed by 49 U.S.C. §30164.**

Transcraft Corporation

**Identify the corporate official, by name and title, whom the agency should contact with respect to this recall.**

Marvin Whitt

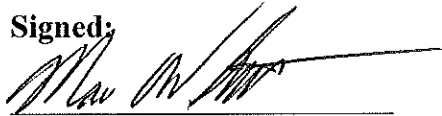
Warranty Manager

**Telephone Number:** 877-489-9020 ext: 1747 **Fax No.:** 765-449-5315

**Name and Title of Person who prepared this report.**

Marvin Whitt, Warranty Manager

**Signed:**



<sup>1</sup>Each manufacturer must furnish a report, to the Associate Administrator for Enforcement, for each defect or noncompliance condition which relates to motor vehicle safety.

This guide was developed from 49 CFR Part 573, "Defect and Noncompliance Reports" and also outlines information currently requested. Any questions, please consult the complete Part 573 or contact Jennifer Timian at (202) 366-0209, by FAX at (202) 366-7882, or E-Mail to RMD.ODI@dot.gov.

**I. Identify the Recalled Items of Equipment**

**2. Identify the Items of Equipment Involved in this Recall, for each make and model or applicable item of equipment product line (provide illustrations or photographs as necessary to describe the item of equipment), provide:**

**Generic name of the item:**

**Make:** Transcraft **Model:** Platform

**Part Number:** VIN identity **Size:** Various

**Function:** Semi-Trailer

**Other information which characterizes/distinguishes the items of equipment to be recalled:**

Equipped with Gunite Automatic Slack Adjusters

**Identify the approximate percentage of the production of all the recalled models manufactured by your company between the inclusive dates of manufacture provided above, that the recalled model population represents. For example, if the recall involved Equipment equipped with certain items of equipment from January 1, 1996, through April 1, 1997, then what was the percentage of the recalled Equipment of all Equipment manufactured during that time period.**

Products provided by Accuride/Gunite indentified in this notice totaled 1,125 slack adjusters which were installed in approximately 290 units built by Transcraft in the time frame from October 15,2010 to January 31, 2011. Trailer production volume in this same period was approximately 420 units. This equates to an estimated percentage of 69%

**II. Identifying the Recall Population**

**3. Furnish the total number of items of equipment recalled potentially containing the defect or noncompliance.**

<b>Items</b>		<b>Number of</b>
<b>Model</b>	<b>Year</b>	<b>Potentially</b>
<b><u>Involved</u></b>		
<u>Platform</u>	<u>2010 to 2011</u>	<u>~290 units</u>
<b>Total Number Potentially Affected by the Recall:</b>		<u>Approximately 290 units</u>

**4. Furnish the approximate percentage of the total number of items of equipment**

**estimated to actually contain the defect or noncompliance:** Transcraft has not been provided this information in the notice.

**Identify and describe how the recall population was determined--in particular how the recalled models were selected and the basis for the beginning and final dates of manufacture of the recalled items of equipment:** Product ship dates from Accuride/Gunite were used to determine population of effected VIN's containing these supplied products by conducting a where used query for VIN's of units built in this same time period, October 15, 2010 to January 31, 2011.

### **III. Describe the Defect or Noncompliance**

**5. Describe the defect or noncompliance. The description should address the nature and physical location of the defect or noncompliance. Illustrations should be provided as appropriate.**

Reference Accuride/Gunite # GUN2.0014 or NHTSA File # 11E-008

**Describe the cause(s) of the defect or noncompliance condition.**

Reference Accuride/Gunite # GUN2.0014 or NHTSA File # 11E-008

**Describe the consequence(s) of the defect or noncompliance condition.**

Reference Accuride/Gunite # GUN2.0014 or NHTSA File # 11E-008

**Identify any warning which can (a) precede or (b) occur.**

Reference Accuride/Gunite # GUN2.0014 or NHTSA File # 11E-008

**If the defect or noncompliance is in a component or assembly purchased from a supplier, identify the supplier by corporate name and address.**

Reference Accuride/Gunite # GUN2.0014 or NHTSA File # 11E-008

**Identify the name and title of the chief executive officer or knowledgeable representative of the supplier:**

Mr. William Noll, Vice President, Corporate Quality Accuride Corporation

### **IV. Provide the Chronology in Determining the Defect/Noncompliance**

*If the recall is for a defect, complete item 6, otherwise item 7.*

**6. With respect to a defect, furnish a chronological summary (including dates) of all the principle events that were the basis for the determination of the defect. The summary should include, but not be limited to, the number of reports, accidents, injuries, fatalities, and warranty claims. Upon notification from Accuride/Gunite of the defect, Transcraft then determined which equipment and customer(s) were affected regarding platform model semi trailers and notified them accordingly.**

#### **V. Identify the Remedy**

**8. Furnish a description of the manufacturer's remedy for the defect or noncompliance. Clearly describe the differences between the recall condition and the remedy.**

Reference Accuride/Gunite # GUN2.0014 or NHTSA File # 11E-008

Transcraft Corporation did notify affected end customer(s) as required per VIN population.

**Clearly describe the distinguishing characteristics of the remedy component/assembly versus the recalled component/assembly.**

Reference Accuride/Gunite # GUN2.0014 or NHTSA File # 11E-008

**Identify and describe how and when the recall condition was corrected in production. If the production remedy was identical to the recall remedy in the field, so state. If the product was discontinued, so state.**

Transcraft has not been provided this information in the notice.

#### **VI. Identify the Recall Schedule**

**Furnish a schedule or agenda (with specific dates) for notification to other manufacturers, dealers/retailers, and purchasers. Please, identify any foreseeable problems with implementing the recall.**

Transcraft has already notified affected customer(s) no later than 3/28/2011.

## VII. Furnish Recall Communications

**9. Furnish a final copy of all notices, bulletins, and other communications that relate directly to the defect or noncompliance and which are sent to more than one manufacturer, distributor, or purchaser. This includes all communications (including both original and follow-up) concerning this recall from the time your company determines the defect or noncompliance condition on, not just the initial notification. A *DRAFT* copy of the notification documents should be submitted to this office by Fax (202-366-7882) or by E-Mail (*RMD.ODI@dot.gov*) for review prior to mailing.**

Copy of customer Notification Letter attached for reference.

# **Transcraft** Corporation

---

Mike Bird  
P.O. Box 1639  
Cadiz, Ky. 42211

Phone: (270) 350-9647  
Fax: (270) 522-1098

March 1, 2011

Attention: To whom it may concern

A report was initiated with our office in regards to Gunite slack adjusters. We were notified by the manufacture of a recall that could affect some of the trailers you may have recently received from Transcraft. Enclosed along with this letter are the Gunite-Service Advisory and a trailer listing. The Gunite Service Advisory contains instructions for identifying the part in question and contact information for Gunite customer service. The trailer list enclosed contains V.I.N.'s, and sales order numbers that could be affected by this notice. The list is also sorted by dealer for your convince.

Please understand this is not a Transcraft recall, we are only assisting in the notification process.

All trailers were produced and manufactured in Cadiz, KY. To all applicable Federal Motor Vehicle Safety Standards at the time of manufacture and bears a certification label to that effect permanently affixed by the original manufacturer to the trailer in accordance with applicable National Highway Traffic Safety Administration (NHTSA) regulations.

Yours truly,



Mike Bird  
Transcraft Warranty Dept.  
270-350-9647  
mbird@transcraft.com

# Gunite – Service Advisory

February 18, 2011



Catalogs & Brochures

Product & Education

Sales Promotion

Pricing

Technical & Trouble Shooting

Other

NO: GUN2.0014

## Gunite® Automatic Slack Adjuster Inspection Instructions

Use the following instructions to inspect your inventory of Gunite® Automatic Slack Adjusters.

1. Remove the automatic slack adjuster from the box and plastic shipping bag.
2. Inspect the automatic slack adjuster in two locations to determine the lot number.
  - a. On the side of the slack adjuster housing you will see the name Gunite and either an "H" or "1H". See Figure A. This is the mold line nomenclature.
  - b. On the bottom of the slack adjuster you will see the lot number information. See Figure B.
  - c. If the combination of slack adjuster mold line and lot number exactly match any of the combinations in the table below, see Figure C, the slack adjuster must be returned to Gunite. Please contact Customer Service at 1-800-677-3786 to obtain a Return Goods Authorization (RGA) document.

### Side of Slack Adjuster Housing

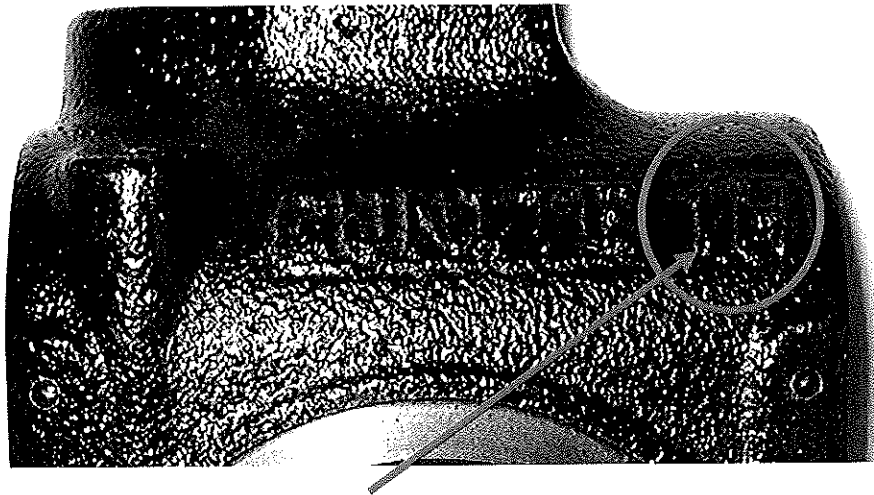


Figure A: Mold Line Nomenclature

*P 3010-0007*



# Gunite – Service Advisory

February 18, 2011

## Bottom of Slack Adjuster Housing

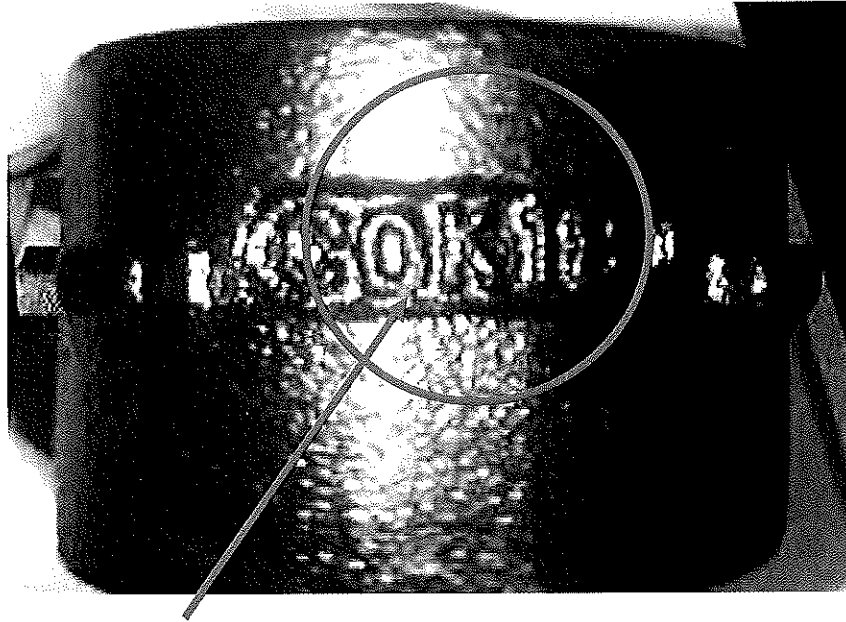


Figure B: Lot Number

## Lot Numbers and Corresponding Mold Line Nomenclature

<u>Lot Nos.</u>	<u>Mold Line</u>	<u>Lot Nos.</u>	<u>Mold Line</u>	<u>Lot Nos.</u>	<u>Mold Line</u>	<u>Lot Nos.</u>	<u>Mold Line</u>
0I06	1H	0K02	1H	1A15	1H	0K26	H
0I07	1H	0K04	1H	1A21	1H		
0I14	1H	0K10	1H	1A22	1H		
0I15	1H	0K12	1H				
0I17	1H	0K18	1H				
0I18	1H	0K22	1H				
0I19	1H	0K24	1H				
0I20	1H	0L12	1H				
0I26	1H	0L18	1H				
0J06	1H	0L22	1H				
0J07	1H	0L24	1H				
		0L28	1H				
		0L30	1H				

Figure C: Lot Numbers and Mold Line Nomenclature

All slack adjusters having the combined lot number and mold line number identified in the table in Figure C must be returned to Gunite. Please contact Customer Service at 1-800-677-3786 to obtain a Return Goods Authorization (RGA) document.



ACCURIDE  
CORPORATION

<u>Vehicle Identification Nbr</u>	<u>Start Date</u>	<u>Finish Date</u>	<u>Part Nbr</u>	<u>Original Customer</u>	<u>Sales Order #</u>
1TTF482S7B3559367	11/2/2010	11/2/2010	P3010-0007	ADOBE EQUIPMENT HOUSTON, LLC	16000494
1TTE482S0B3528392	11/6/2010	11/6/2010	P3010-0007	ADOBE EQUIPMENT HOUSTON, LLC	16000436
1TTE533S0B3486241	10/18/2010	10/18/2010	P3010-0007	ADOBE EQUIPMENT HOUSTON, LLC	16000394
1TTF482S7B3528393	11/5/2010	11/5/2010	P3010-0007	ADOBE EQUIPMENT HOUSTON, LLC	16000435
1TTF452C7B3553379	12/11/2010	12/11/2010	P3010-0007	ARROW TRAILER & EQUIPMENT CO.	16000480
1TTF482S1B3578612	12/22/2010	12/22/2010	P3010-0007	BLUE ARROW TRANSPORTATION	16000522
1TTF482S3B3578613	12/22/2010	12/22/2010	P3010-0007	BLUE ARROW TRANSPORTATION	16000522
1TTE482S2B3496173	10/15/2010	10/15/2010	P3010-0007	CAROLINA CAT	16000405
1TTE482S4B3496174	10/16/2010	10/16/2010	P3010-0007	CAROLINA CAT	16000405
1TTE482S1B3496133	10/20/2010	10/20/2010	P3010-0007	CAROLINA CAT	16000406
1TTE482S3B3496134	10/22/2010	10/22/2010	P3010-0007	CAROLINA CAT	16000406
1TTE402S9C3618210	12/28/2010	12/28/2010	P3010-0007	CAROLINA CAT	16000490
1TTF422S8C3618165	1/3/2011	1/3/2011	P3010-0007	CAROLINA CAT	16000489
1TTE482S9C3625172	2/9/2011	2/9/2011	P3010-0007	CAROLINA CAT	16000595
1TTF452S4B3475392	10/1/2010	10/1/2010	P3010-0007	CORPUS CHRISTI FREIGHTLINER,	16000367
1TTE482S5B3553420	12/10/2010	12/10/2010	P3010-0007	CORPUS CHRISTI FREIGHTLINER,	16000484
1TTE482S7B3553421	12/13/2010	12/13/2010	P3010-0007	CORPUS CHRISTI FREIGHTLINER,	16000484
1TTE482S9B3553419	12/9/2010	12/9/2010	P3010-0007	CORPUS CHRISTI FREIGHTLINER,	16000484
1TTE482S0C3553424	2/12/2011	2/12/2011	P3010-0007	CORPUS CHRISTI FREIGHTLINER,	16000484
1TTE482S7C3553422	2/8/2011	2/8/2011	P3010-0007	CORPUS CHRISTI FREIGHTLINER,	16000484
1TTE482S9C3553423	2/11/2011	2/11/2011	P3010-0007	CORPUS CHRISTI FREIGHTLINER,	16000484
1TTF532C9B3475432	10/1/2010	10/1/2010	P3010-0007	COUNTRY SUPPLY, INC.	16000368
1TTF482SX83553417	12/10/2010	12/10/2010	P3010-0007	DOCKSIDE TRAILER SALES, INC	16000476
1TTF482S1B3553418	12/11/2010	12/11/2010	P3010-0007	DOCKSIDE TRAILER SALES, INC	16000476
1TTF482C1B3489499	10/7/2010	10/7/2010	P3010-0007	DORSETT TRUCK & TRAILER SALES	16000401
1TTF482C9B35537217	11/11/2010	11/11/2010	P3010-0007	DUCKETT TRUCK CENTER INC	16000444
1TTE483S0B3537222	11/13/2010	11/13/2010	P3010-0007	GREAT WESTERN LEASING	16000452
1TTE483S2B3537223	11/15/2010	11/15/2010	P3010-0007	GREAT WESTERN LEASING	16000452
1TTE483S4B3537224	11/18/2010	11/18/2010	P3010-0007	GREAT WESTERN LEASING	16000452
1TTE483S6B3537225	11/20/2010	11/20/2010	P3010-0007	GREAT WESTERN LEASING	16000452
1TTF482C2B3537219	11/22/2010	11/22/2010	P3010-0007	GULF CITY BODY & TRAILER WORKS	16000442
1TTF482S6B3545511	12/7/2010	12/7/2010	P3010-0007	GULF CITY BODY & TRAILER WORKS	16000468
1TTF402S1B34755563	10/1/2010	10/1/2010	P3010-0007	HIGHWAY TRAILER SALES	16000384

1TTF532A8C3597750	1/27/2011	1/27/2011	P3010-0007	HIGHWAY TRAILER SALES	16000563
1TTF282S3B3489405	10/7/2010	10/7/2010	P3010-0007	J & B TRAILERS AND EQUIP	16000397
1TTF532C4B3543507	11/13/2010	11/13/2010	P3010-0007	JES SALES	16000464
1TTF532C4B3543510	11/16/2010	11/16/2010	P3010-0007	JES SALES	16000464
1TTF532C6B3543508	11/13/2010	11/13/2010	P3010-0007	JES SALES	16000464
1TTF532C8B3543509	11/15/2010	11/15/2010	P3010-0007	JES SALES	16000464
1TTF482S9B3537497	11/30/2010	11/30/2010	P3010-0007	JES SALES	16000458
1TTF482S0B3538182	11/22/2010	11/22/2010	P3010-0007	JES SALES	16000462
1TTF482S2B3538183	11/22/2010	11/22/2010	P3010-0007	JES SALES	16000462
1TTF482S4B3538184	11/23/2010	11/23/2010	P3010-0007	JES SALES	16000462
1TTF482S6B3538185	12/1/2010	12/1/2010	P3010-0007	JES SALES	16000462
1TTF482S7B3538180	11/20/2010	11/20/2010	P3010-0007	JES SALES	16000462
1TTF482S8B3538186	12/1/2010	12/1/2010	P3010-0007	JES SALES	16000462
1TTF482S9B3538178	11/18/2010	11/18/2010	P3010-0007	JES SALES	16000462
1TTF482S9B3538181	11/20/2010	11/20/2010	P3010-0007	JES SALES	16000462
1TTF482SX3538187	12/2/2010	12/2/2010	P3010-0007	JES SALES	16000462
1TTF482SX3538190	12/6/2010	12/6/2010	P3010-0007	JES SALES	16000462
1TTF482S0B3538196	12/9/2010	12/9/2010	P3010-0007	JES SALES	16000462
1TTF482S0B3538201	12/13/2010	12/13/2010	P3010-0007	JES SALES	16000462
1TTF482S1B3538188	12/2/2010	12/2/2010	P3010-0007	JES SALES	16000462
1TTF482S1B3538191	12/6/2010	12/6/2010	P3010-0007	JES SALES	16000462
1TTF482S2B3538197	12/9/2010	12/9/2010	P3010-0007	JES SALES	16000462
1TTF482S2B3538202	12/13/2010	12/13/2010	P3010-0007	JES SALES	16000462
1TTF482S3B3538189	12/3/2010	12/3/2010	P3010-0007	JES SALES	16000462
1TTF482S3B3538192	12/7/2010	12/7/2010	P3010-0007	JES SALES	16000462
1TTF482S4B3538198	12/10/2010	12/10/2010	P3010-0007	JES SALES	16000462
1TTF482S4B3538203	12/14/2010	12/14/2010	P3010-0007	JES SALES	16000462
1TTF482S5B3538193	12/7/2010	12/7/2010	P3010-0007	JES SALES	16000462
1TTF482S6B3538199	12/10/2010	12/10/2010	P3010-0007	JES SALES	16000462
1TTF482S7B3538194	12/8/2010	12/8/2010	P3010-0007	JES SALES	16000462
1TTF482S9B3538195	12/9/2010	12/9/2010	P3010-0007	JES SALES	16000462
1TTF482S9B3538200	12/11/2010	12/11/2010	P3010-0007	JES SALES	16000462
1TTF532C6B3543511	11/19/2010	11/19/2010	P3010-0007	JES SALES	16000464
1TTF532CX83543513	11/24/2010	11/24/2010	P3010-0007	JES SALES	16000464

1TTF532C8B3543512	11/20/2010	11/20/2010	P3010-0007	JES SALES	16000464
1TTF532C1B3543514	11/29/2010	11/29/2010	P3010-0007	JES SALES	16000464
1TTF532C3B3543515	11/29/2010	11/29/2010	P3010-0007	JES SALES	16000464
1TTF532C5B3543516	11/29/2010	11/29/2010	P3010-0007	JES SALES	16000464
1TTF482S8B3489437	10/22/2010	10/22/2010	P3010-0007	LARSON TRUCK SALES, INC	16000399
1TTF532C9B3489455	10/14/2010	10/14/2010	P3010-0007	LARSON TRUCK SALES, INC	16000400
1TTF533S8B3489422	10/15/2010	10/15/2010	P3010-0007	LARSON TRUCK SALES, INC	16000398
1TTF532S1B3553513	12/10/2010	12/10/2010	P3010-0007	LARSON TRUCK SALES, INC	16000477
1TTF532S2B3553536	12/21/2010	12/21/2010	P3010-0007	LARSON TRUCK SALES, INC	16000482
1TTF533S3B3531950	11/5/2010	11/5/2010	P3010-0007	LUBBOCK TRUCK SALES, INC	16000431
1TTF533S5B3531951	11/10/2010	11/10/2010	P3010-0007	LUBBOCK TRUCK SALES, INC	16000431
1TTF533S7B3531949	11/9/2010	11/9/2010	P3010-0007	LUBBOCK TRUCK SALES, INC	16000432
1TTF532S0B3531955	11/8/2010	11/8/2010	P3010-0007	LUBBOCK TRUCK SALES, INC	16000428
1TTF532S9B3531954	11/4/2010	11/4/2010	P3010-0007	LUBBOCK TRUCK SALES, INC	16000428
1TTF533S0C3576703	1/13/2011	1/13/2011	P3010-0007	LUBBOCK TRUCK SALES, INC	16000512
1TTF533S9C3576702	1/12/2011	1/12/2011	P3010-0007	LUBBOCK TRUCK SALES, INC	16000512
1TTF482C7B3509514	10/27/2010	10/27/2010	P3010-0007	MAC K TRUCK SALES OF TULSA, INC	16000418
1TTF532S2B3565884	12/21/2010	12/21/2010	P3010-0007	NATIONAL TRAILER CENTER	16000501
1TTF532S7B3564973	12/21/2010	12/21/2010	P3010-0007	NATIONAL TRAILER CENTER	16000501
1TTF532A5C3636973	1/14/2011	1/14/2011	P3010-0007	NORTH METRO TRUCK LEASING LLC	16000510
1TTF532A7C3636974	1/17/2011	1/17/2011	P3010-0007	NORTH METRO TRUCK LEASING LLC	16000510
1TTF452S0C3561302	12/23/2010	12/23/2010	P3010-0007	PETERBLT OF WYOMING	16000487
1TTF452S2C3561303	12/28/2010	12/28/2010	P3010-0007	PETERBLT OF WYOMING	16000487
1TTF452S4C3561304	12/29/2010	12/29/2010	P3010-0007	PETERBLT OF WYOMING	16000487
1TTF452SXC3561307	12/29/2010	12/29/2010	P3010-0007	PETERBLT OF WYOMING	16000487
1TTF452S1C3561308	12/29/2010	12/29/2010	P3010-0007	PETERBLT OF WYOMING	16000487
1TTF452S8C3561306	12/29/2010	12/29/2010	P3010-0007	PINNACLE TRUCK & TRAILER SALES	16000404
1TTF482C2B3496171	10/6/2010	10/6/2010	P3010-0007	PINNACLE TRUCK & TRAILER SALES	16000404
1TTF482C4B3496172	10/9/2010	10/9/2010	P3010-0007	PINNACLE TRUCK & TRAILER SALES	16000404
1TTF532CXB3454895	10/8/2010	10/8/2010	P3010-0007	PINNACLE TRUCK & TRAILER SALES	16000344
1TTF532C6B3454893	10/5/2010	10/5/2010	P3010-0007	PINNACLE TRUCK & TRAILER SALES	16000344
1TTF532C8B3454894	10/8/2010	10/8/2010	P3010-0007	PINNACLE TRUCK & TRAILER SALES	16000344
1TTF532C5B3454898	10/12/2010	10/12/2010	P3010-0007	PINNACLE TRUCK & TRAILER SALES	16000344
1TTF532C7B3454899	10/15/2010	10/15/2010	P3010-0007	PINNACLE TRUCK & TRAILER SALES	16000344

1TTF532C1B3454896	10/9/2010	10/9/2010	P3010-0007	PINNACLE TRUCK & TRAILER SALES	16000344
1TTF532C3B3454897	10/11/2010	10/11/2010	P3010-0007	PINNACLE TRUCK & TRAILER SALES	16000344
1TTF442SX8B3559243	12/18/2010	12/18/2010	P3010-0007	PINNACLE TRUCK & TRAILER SALES	16000486
1TTF442S1B3559244	12/18/2010	12/18/2010	P3010-0007	PINNACLE TRUCK & TRAILER SALES	16000486
1TTF442S3B3559245	12/18/2010	12/18/2010	P3010-0007	PINNACLE TRUCK & TRAILER SALES	16000486
1TTF442S4B3559240	12/15/2010	12/15/2010	P3010-0007	PINNACLE TRUCK & TRAILER SALES	16000486
1TTF442S6B3559241	12/15/2010	12/15/2010	P3010-0007	PINNACLE TRUCK & TRAILER SALES	16000486
1TTF442S8B3559242	12/15/2010	12/15/2010	P3010-0007	PINNACLE TRUCK & TRAILER SALES	16000486
1TTF442S6B3559238	12/15/2010	12/15/2010	P3010-0007	PINNACLE TRUCK & TRAILER SALES	16000486
1TTF442S7B3559247	12/20/2010	12/20/2010	P3010-0007	PINNACLE TRUCK & TRAILER SALES	16000486
1TTF442S9B3559248	12/20/2010	12/20/2010	P3010-0007	PINNACLE TRUCK & TRAILER SALES	16000486
1TTF442S4B3559237	12/14/2010	12/14/2010	P3010-0007	PINNACLE TRUCK & TRAILER SALES	16000486
1TTF442S5B3559246	12/20/2010	12/20/2010	P3010-0007	PINNACLE TRUCK & TRAILER SALES	16000486
1TTF442S8B3559239	12/15/2010	12/15/2010	P3010-0007	PINNACLE TRUCK & TRAILER SALES	16000486
1TTE483SXG3545555	1/7/2011	1/7/2011	P3010-0007	PINNACLE TRUCK & TRAILER SALES	16000473
1TTE483S1C3545556	1/7/2011	1/7/2011	P3010-0007	PINNACLE TRUCK & TRAILER SALES	16000473
1TTE483S3C3545557	1/11/2011	1/11/2011	P3010-0007	PINNACLE TRUCK & TRAILER SALES	16000473
1TTF532C2C3587877	1/7/2011	1/7/2011	P3010-0007	PINNACLE TRUCK & TRAILER SALES	16000534
1TTF532C4C3587878	1/7/2011	1/7/2011	P3010-0007	PINNACLE TRUCK & TRAILER SALES	16000534
1TTF532C6C3587879	1/7/2011	1/7/2011	P3010-0007	PINNACLE TRUCK & TRAILER SALES	16000534
1TTE483S3C3545560	1/12/2011	1/12/2011	P3010-0007	PINNACLE TRUCK & TRAILER SALES	16000473
1TTE483S5C3545558	1/11/2011	1/11/2011	P3010-0007	PINNACLE TRUCK & TRAILER SALES	16000473
1TTE483S7C3545559	1/12/2011	1/12/2011	P3010-0007	PINNACLE TRUCK & TRAILER SALES	16000473
1TTE532S4C3587866	1/13/2011	1/13/2011	P3010-0007	PINNACLE TRUCK & TRAILER SALES	16000532
1TTE532S6C3587870	1/17/2011	1/17/2011	P3010-0007	PINNACLE TRUCK & TRAILER SALES	16000532
1TTE532S6C3617790	1/18/2011	1/18/2011	P3010-0007	PINNACLE TRUCK & TRAILER SALES	16000532
1TTF532C2C3587880	1/10/2011	1/10/2011	P3010-0007	PINNACLE TRUCK & TRAILER SALES	16000534
1TTF532C4C3587881	1/10/2011	1/10/2011	P3010-0007	PINNACLE TRUCK & TRAILER SALES	16000534
1TTF532C6C3587882	1/10/2011	1/10/2011	P3010-0007	PINNACLE TRUCK & TRAILER SALES	16000534
1TTE532SXG3587869	1/17/2011	1/17/2011	P3010-0007	PINNACLE TRUCK & TRAILER SALES	16000532
1TTE532S6C3587867	1/14/2011	1/14/2011	P3010-0007	PINNACLE TRUCK & TRAILER SALES	16000532
1TTE532S8C3587868	1/14/2011	1/14/2011	P3010-0007	PINNACLE TRUCK & TRAILER SALES	16000532
1TTE532SXG3587872	2/9/2011	2/9/2011	P3010-0007	PINNACLE TRUCK & TRAILER SALES	16000533
1TTE532S1C3587873	2/10/2011	2/10/2011	P3010-0007	PINNACLE TRUCK & TRAILER SALES	16000533

1TTE532S8C3587871	2/8/2011	2/8/2011	P3010-0007	PINNACLE TRUCK & TRAILER SALES	16000533
1TTE532S3C3587874	2/10/2011	2/10/2011	P3010-0007	PINNACLE TRUCK & TRAILER SALES	16000533
1TTE532S5C3587875	2/11/2011	2/11/2011	P3010-0007	PINNACLE TRUCK & TRAILER SALES	16000533
1TTE532S7C3587876	2/11/2011	2/11/2011	P3010-0007	PINNACLE TRUCK & TRAILER SALES	16000533
1TTE532S0B3472521	10/20/2010	10/20/2010	P3010-0007	QUALITY TRAILER SALES	16000361
1TTE532S2B3472522	10/21/2010	10/21/2010	P3010-0007	QUALITY TRAILER SALES	16000361
1TTE532S4B3472523	10/22/2010	10/22/2010	P3010-0007	QUALITY TRAILER SALES	16000361
1TTE532SXB3472526	11/4/2010	11/4/2010	P3010-0007	QUALITY TRAILER SALES	16000361
1TTE532S6B3472524	10/26/2010	10/26/2010	P3010-0007	QUALITY TRAILER SALES	16000361
1TTE532S8B3472525	10/27/2010	10/27/2010	P3010-0007	QUALITY TRAILER SALES	16000396
1TTE532S2B3489370	10/25/2010	10/25/2010	P3010-0007	QUALITY TRAILER SALES	16000396
1TTE532S4B3489368	10/23/2010	10/23/2010	P3010-0007	QUALITY TRAILER SALES	16000396
1TTE532S6B3489369	10/25/2010	10/25/2010	P3010-0007	QUALITY TRAILER SALES	16000396
1TTE532SX83489374	10/27/2010	10/27/2010	P3010-0007	QUALITY TRAILER SALES	16000396
1TTE532S1B3489375	10/28/2010	10/28/2010	P3010-0007	QUALITY TRAILER SALES	16000396
1TTE532S3B3489376	10/29/2010	10/29/2010	P3010-0007	QUALITY TRAILER SALES	16000396
1TTE532S4B3489371	10/25/2010	10/25/2010	P3010-0007	QUALITY TRAILER SALES	16000396
1TTE532S6B3489372	10/26/2010	10/26/2010	P3010-0007	QUALITY TRAILER SALES	16000396
1TTE532S8B3489373	10/27/2010	10/27/2010	P3010-0007	QUALITY TRAILER SALES	16000396
1TTE532S3B3532923	11/10/2010	11/10/2010	P3010-0007	QUALITY TRAILER SALES	16000447
1TTE532S5B3489377	10/29/2010	10/29/2010	P3010-0007	QUALITY TRAILER SALES	16000396
1TTE532SX3587889	1/17/2011	1/17/2011	P3010-0007	QUALITY TRAILER SALES	16000537
1TTE482S0B3505727	10/19/2010	10/19/2010	P3010-0007	RENOS TRAILER SALES INC	16000403
1TTE482S0B3537453	11/22/2010	11/22/2010	P3010-0007	RENOS TRAILER SALES INC	16000449
1TTE482S8C3576742	1/19/2011	1/19/2011	P3010-0007	RENOS TRAILER SALES INC	16000519
1TTE532S1C3587890	1/18/2011	1/18/2011	P3010-0007	RIVER ROADS DISTRIBUTING CO	16000538
1TTE532S3C3587891	1/19/2011	1/19/2011	P3010-0007	RIVER ROADS DISTRIBUTING CO	16000538
1TTE532S5C3587892	1/20/2011	1/20/2011	P3010-0007	RIVER ROADS DISTRIBUTING CO	16000538
1TTF482C0C3587893	1/11/2011	1/11/2011	P3010-0007	RIVER ROADS DISTRIBUTING CO	16000539
1TTF482C2C3587894	1/13/2011	1/13/2011	P3010-0007	RIVER ROADS DISTRIBUTING CO	16000540
1TTF482C4C3587895	1/13/2011	1/13/2011	P3010-0007	RIVER ROADS DISTRIBUTING CO	16000541
1TTE532C1B3475517	10/7/2010	10/7/2010	P3010-0007	SEMI-TRAILER SALES	16000377
1TTE533C5B3475518	10/9/2010	10/9/2010	P3010-0007	SEMI-TRAILER SALES	16000378
1TTE512C4B3549937	11/18/2010	11/18/2010	P3010-0007	SEMI-TRAILER SALES	16000474

1TTE532C8B3475515	11/10/2010	11/10/2010	P3010-0007	SEMI-TRAILER SALES	16000376
1TTE532C1C3587896	1/21/2011	1/21/2011	P3010-0007	SEMI-TRAILER SALES	16000542
1TTE532C3C3587897	1/21/2011	1/21/2011	P3010-0007	SEMI-TRAILER SALES	16000542
1TTE532C3C3617822	12/28/2010	12/28/2010	P3010-0007	SEMI-TRAILER SALES	16000508
1TTE532CXK3576710	1/3/2011	1/3/2011	P3010-0007	SOUTHLAND INTERNATIONAL	16000513
1TTE532C1C3576708	1/3/2011	1/3/2011	P3010-0007	SOUTHLAND INTERNATIONAL	16000513
1TTE532C3C3576709	1/3/2011	1/3/2011	P3010-0007	SOUTHLAND INTERNATIONAL	16000513
1TTF482S1B3561373	12/14/2010	12/14/2010	P3010-0007	SOUTHLAND INTERNATIONAL	16000496
1TTF482C3C3576712	1/3/2011	1/3/2011	P3010-0007	SOUTHLAND INTERNATIONAL	16000514
1TTF482C3C3617839	1/4/2011	1/4/2011	P3010-0007	SOUTHLAND INTERNATIONAL	16000514
1TTF482C5C3576713	1/3/2011	1/3/2011	P3010-0007	SOUTHLAND INTERNATIONAL	16000514
1TTE532S0B3545516	12/14/2010	12/14/2010	P3010-0007	STAR TRAILER SALES, INC.	16000466
1TTE532S2B3545517	12/20/2010	12/20/2010	P3010-0007	STAR TRAILER SALES, INC.	16000466
1TTE532S4B3564005	12/18/2010	12/18/2010	P3010-0007	STAR TRAILER SALES, INC.	16000380
1TTF482CX8B3475519	10/1/2010	10/1/2010	P3010-0007	STOOPS QUALITY TRAILER	16000379
1TTF482C8B3475521	10/5/2010	10/5/2010	P3010-0007	STOOPS QUALITY TRAILER	16000333
1TTE482S0B3447523	10/4/2010	10/4/2010	P3010-0007	SUPERIOR TRAILER SALES	16000414
1TTE482S1B3505686	10/5/2010	10/5/2010	P3010-0007	SUPERIOR TRAILER SALES	16000333
1TTE482S2B3447524	10/4/2010	10/4/2010	P3010-0007	SUPERIOR TRAILER SALES	16000333
1TTE482S5B3447520	10/1/2010	10/1/2010	P3010-0007	SUPERIOR TRAILER SALES	16000333
1TTE482S7B3447521	10/4/2010	10/4/2010	P3010-0007	SUPERIOR TRAILER SALES	16000333
1TTE482S9B3447522	10/4/2010	10/4/2010	P3010-0007	SUPERIOR TRAILER SALES	16000364
1TTE532S0B3475337	10/7/2010	10/7/2010	P3010-0007	SUPERIOR TRAILER SALES	16000364
1TTE532S2B3475338	10/8/2010	10/8/2010	P3010-0007	SUPERIOR TRAILER SALES	16000364
1TTE532S4B3475339	10/8/2010	10/8/2010	P3010-0007	SUPERIOR TRAILER SALES	16000364
1TTE532S0B3475340	10/11/2010	10/11/2010	P3010-0007	SUPERIOR TRAILER SALES	16000364
1TTE532S2B3475341	10/13/2010	10/13/2010	P3010-0007	SUPERIOR TRAILER SALES	16000364
1TTE532S4B3475342	10/13/2010	10/13/2010	P3010-0007	SUPERIOR TRAILER SALES	16000364
1TTE532SX8B3475345	10/14/2010	10/14/2010	P3010-0007	SUPERIOR TRAILER SALES	16000364
1TTE532S6B3475343	10/13/2010	10/13/2010	P3010-0007	SUPERIOR TRAILER SALES	16000364
1TTE532S8B3475344	10/13/2010	10/13/2010	P3010-0007	SUPERIOR TRAILER SALES	16000416
1TTE532SX8B3509512	10/6/2010	10/6/2010	P3010-0007	SUPERIOR TRAILER SALES	16000364
1TTE532S1B3475346	10/14/2010	10/14/2010	P3010-0007	SUPERIOR TRAILER SALES	16000364
1TTE532S3B3475347	10/15/2010	10/15/2010	P3010-0007	SUPERIOR TRAILER SALES	16000364

1TTE482S0B3475385	10/19/2010	10/19/2010	P3010-0007	SUPERIOR TRAILER SALES	16000365
1TTE482S2B3475386	10/19/2010	10/19/2010	P3010-0007	SUPERIOR TRAILER SALES	16000365
1TTE482S4B3475387	10/19/2010	10/19/2010	P3010-0007	SUPERIOR TRAILER SALES	16000365
1TTE482S4B3475390	10/27/2010	10/27/2010	P3010-0007	SUPERIOR TRAILER SALES	16000365
1TTE482S6B3475388	10/26/2010	10/26/2010	P3010-0007	SUPERIOR TRAILER SALES	16000365
1TTE482S8B3475389	10/26/2010	10/26/2010	P3010-0007	SUPERIOR TRAILER SALES	16000365
1TTE522S0B3537149	11/14/2010	11/11/2010	P3010-0007	SUPERIOR TRAILER SALES	16000443
1TTE522S0B3537152	11/12/2010	11/12/2010	P3010-0007	SUPERIOR TRAILER SALES	16000443
1TTE522S9B3537151	11/12/2010	11/12/2010	P3010-0007	SUPERIOR TRAILER SALES	16000443
1TTE532C5B3475472	10/6/2010	10/6/2010	P3010-0007	TRAILER EQUIPMENT INC	16000370
1TTE532C7B3475473	10/7/2010	10/7/2010	P3010-0007	TRAILER EQUIPMENT INC	16000370
1TTE482S0B3475564	10/14/2010	10/14/2010	P3010-0007	TRAILER ONE INC	16000385
1TTE482S2B3475565	10/14/2010	10/14/2010	P3010-0007	TRAILER ONE INC	16000386
1TTE532S3C3587907	1/25/2011	1/25/2011	P3010-0007	TRAILER ONE INC	16000545
1TTF533SXB3540875	11/1/2010	11/1/2010	P3010-0007	TRANS EAST TRAILERS, LTD	16000465
1TTF533S1B3540876	11/2/2010	11/2/2010	P3010-0007	TRANS EAST TRAILERS, LTD	16000465
1TTF533S3B3540877	11/2/2010	11/2/2010	P3010-0007	TRANS EAST TRAILERS, LTD	16000465
1TTF533S3B3540880	11/2/2010	11/2/2010	P3010-0007	TRANS EAST TRAILERS, LTD	16000465
1TTF533S5B3540878	11/2/2010	11/2/2010	P3010-0007	TRANS EAST TRAILERS, LTD	16000465
1TTF533S5B3540881	11/3/2010	11/3/2010	P3010-0007	TRANS EAST TRAILERS, LTD	16000465
1TTF533S6B3540873	11/1/2010	11/1/2010	P3010-0007	TRANS EAST TRAILERS, LTD	16000465
1TTF533S7B3540879	11/2/2010	11/2/2010	P3010-0007	TRANS EAST TRAILERS, LTD	16000465
1TTF533S8B3540874	11/1/2010	11/1/2010	P3010-0007	TRANS EAST TRAILERS, LTD	16000465
1TTF533S0B3540884	11/3/2010	11/3/2010	P3010-0007	TRANS EAST TRAILERS, LTD	16000465
1TTF533S2B3540885	11/3/2010	11/3/2010	P3010-0007	TRANS EAST TRAILERS, LTD	16000465
1TTF533S4B3540886	11/4/2010	11/4/2010	P3010-0007	TRANS EAST TRAILERS, LTD	16000465
1TTF533S6B3540887	11/4/2010	11/4/2010	P3010-0007	TRANS EAST TRAILERS, LTD	16000465
1TTF533S7B3540882	11/3/2010	11/3/2010	P3010-0007	TRANS EAST TRAILERS, LTD	16000465
1TTF533S9B3540883	11/3/2010	11/3/2010	P3010-0007	TRANS EAST TRAILERS, LTD	16000465
1TTF484S0B3524747	12/6/2010	12/6/2010	P3010-0007	TRANS EAST TRAILERS, LTD	16000426
1TTE512C5B3545508	12/6/2010	12/6/2010	P3010-0007	TRANS EAST TRAILERS, LTD	16000470
1TTF533C5B3545510	12/8/2010	12/8/2010	P3010-0007	TRANS EAST TRAILERS, LTD	16000471
1TTF533C9B3545509	12/2/2010	12/2/2010	P3010-0007	TRANS EAST TRAILERS, LTD	16000471
1TTE533C0C3645205	1/24/2011	1/24/2011	P3010-0007	TRANS EAST TRAILERS, LTD	16000635

1TTE533C2C3589445	1/24/2011	1/24/2011	P3010-0007	TRANS EAST TRAILERS, LTD	16000546
1TTE533C4C3589446	1/25/2011	1/25/2011	P3010-0007	TRANS EAST TRAILERS, LTD	16000546
1TTE533C5C3607498	2/3/2011	2/3/2011	P3010-0007	TRANS EAST TRAILERS, LTD	16000565
1TTF482S7C3607497	2/2/2011	2/2/2011	P3010-0007	TRANS EAST TRAILERS, LTD	16000564
1TTF533C4C3607500	1/31/2011	1/31/2011	P3010-0007	TRANS EAST TRAILERS, LTD	16000566
1TTF533S4C3647700	2/3/2011	2/3/2011	P3010-0007	TRANS EAST TRAILERS, LTD	16000641
1TTF533S6C3647701	2/3/2011	2/3/2011	P3010-0007	TRANS EAST TRAILERS, LTD	16000641
1TTF533S8C3647702	2/4/2011	2/4/2011	P3010-0007	TRANS EAST TRAILERS, LTD	16000641
1TTE533S7C3593014	1/28/2011	1/28/2011	P3010-0007	TRANS EAST TRAILERS, LTD	16000555
1TTE533S9C3593015	1/31/2011	1/31/2011	P3010-0007	TRANS EAST TRAILERS, LTD	16000555
1TTF532C0C3667954	2/2/2011	2/2/2011	P3010-0007	TRANSIT TRAILER LIMITED	16000570
1TTF532C2C3667955	2/2/2011	2/2/2011	P3010-0007	TRANSIT TRAILER LIMITED	16000570
1TTF532C9C3667953	2/8/2011	2/8/2011	P3010-0007	TRANSIT TRAILER LIMITED	16000570
1TTF452S5B3475434	10/4/2010	10/4/2010	P3010-0007	TRI STATE TRAILER SALES	16000369
1TTF452S7B3475435	10/5/2010	10/5/2010	P3010-0007	TRI STATE TRAILER SALES	16000369
1TTF532S0B3531958	10/30/2010	10/30/2010	P3010-0007	TRI STATE TRAILER SALES	16000441
1TTF532S7B3531956	10/29/2010	10/29/2010	P3010-0007	TRI STATE TRAILER SALES	16000441
1TTF532S9B3531957	10/30/2010	10/30/2010	P3010-0007	TRI STATE TRAILER SALES	16000441
1TTF532S0B3531961	11/8/2010	11/8/2010	P3010-0007	TRI STATE TRAILER SALES	16000441
1TTF532S2B3531959	11/4/2010	11/4/2010	P3010-0007	TRI STATE TRAILER SALES	16000441
1TTF532S9B3531960	11/6/2010	11/6/2010	P3010-0007	TRI STATE TRAILER SALES	16000441
1TTF532S2B3531962	11/12/2010	11/12/2010	P3010-0007	TRI STATE TRAILER SALES	16000441
1TTF532S4B3531963	11/11/2010	11/11/2010	P3010-0007	VIRGINIA TRUCK CENTER, INC	16000390
1TTF482C3B3486202	10/5/2010	10/5/2010	P3010-0007	VIRGINIA TRUCK CENTER, INC	16000456
1TTE532S1B3540924	12/6/2010	12/6/2010	P3010-0007	VIRGINIA TRUCK CENTER, INC	16000372
1TTF482C5B3475475	10/6/2010	10/6/2010	P3010-0007	Wabash National Trailer Center	16000437
1TTF482SXB3528386	11/8/2010	11/8/2010	P3010-0007	Wabash National Trailer Center	16000437
1TTF482S1B3528387	11/8/2010	11/8/2010	P3010-0007	Wabash National Trailer Center	16000445
1TTF482C0B3537221	11/12/2010	11/12/2010	P3010-0007	Wabash National Trailer Center	16000445
1TTF482C9B3537220	11/13/2010	11/13/2010	P3010-0007	Wabash National Trailer Center	16000446
1TTF362SXB3505729	11/20/2010	11/20/2010	P3010-0007	Wabash National Trailer Center	16000410
1TTF422S0B3505728	11/17/2010	11/17/2010	P3010-0007	Wabash National Trailer Center	16000409
1TTF502C2B3528390	11/5/2010	11/5/2010	P3010-0007	Wabash National Trailer Center	16000433
1TTF502C4B3528391	11/15/2010	11/15/2010	P3010-0007	Wabash National Trailer Center	16000433

1TTF362S3B3553380	12/11/2010	12/11/2010	P3010-0007	Wabash National Trailer Center	16000481
1TTF482C4C3582048	1/4/2011	1/4/2011	P3010-0007	Wabash National Trailer Center	16000526
1TTF482C6C3582049	1/5/2011	1/5/2011	P3010-0007	Wabash National Trailer Center	16000526
1TTF452S0C3587883	1/5/2011	1/5/2011	P3010-0007	Wabash National Trailer Center	16000535
1TTF452S2C3587884	1/6/2011	1/6/2011	P3010-0007	Wabash National Trailer Center	16000535
1TTF452S4C3587885	1/6/2011	1/6/2011	P3010-0007	Wabash National Trailer Center	16000535
1TTF482S3C3633630	1/28/2011	1/28/2011	P3010-0007	Wabash National Trailer Center	16000610
1TTF482S5C3633631	2/1/2011	2/1/2011	P3010-0007	Wabash National Trailer Center	16000610
1TTF282S6B3528388	11/4/2010	11/4/2010	P3010-0007	WABASH OF UTAH	16000423
1TTF402S4B3537487	11/30/2010	11/30/2010	P3010-0007	WABASH OF UTAH	16000457
1TTF482S4C3593022	1/31/2011	1/31/2011	P3010-0007	WABASH OF UTAH	16000554
1TTF482S6C3593023	1/31/2011	1/31/2011	P3010-0007	WABASH OF UTAH	16000554
1TTF482S8C3593024	2/1/2011	2/1/2011	P3010-0007	WABASH OF UTAH	16000554
1TTF422C2B3502841	10/5/2010	10/5/2010	P3010-0007	WICKS TRUCK TRAILERS, INC	16000412
1TTF532S2B3475490	10/6/2010	10/6/2010	P3010-0007	WICKS TRUCK TRAILERS, INC	16000375
1TTF482C0B3509516	11/11/2010	11/11/2010	P3010-0007	WICKS TRUCK TRAILERS, INC	16000417
1TTF482C9B3509515	11/10/2010	11/10/2010	P3010-0007	WICKS TRUCK TRAILERS, INC	16000417
1TTF452S0C3617934	12/20/2010	12/20/2010	P3010-0007	WORLDWIDE EQUIPMENT	16000497
1TTF452S9C3617933	2/2/2011	2/2/2011	P3010-0007	WORLDWIDE EQUIPMENT	16000497