

PINTLE EYE REPLACEMENT KIT

WC01-0110
 Date: DRAFT

Model	Serial Number	Kit Version
510	351262, 351267 – 351274, 351279 – 351282, 351298 – 351299, 351305 – 351307, 351315 – 351316, 351323 – 351325, 351337 – 351339, 351355 – 351356, 351368 – 351369, 351375 – 351376, 351383 – 351384, 351399 – 351401, 351410 – 351411, 351416 – 351417, 351456 – 351457, 351462 – 351463, 351470 – 351471, 351478 – 351479, 351539 – 351540, 351701 - 351716	WC01
510LT	351527 – 351528, 351701 - 351705	WC01
Mandatory <input checked="" type="checkbox"/>	Recommended <input type="checkbox"/>	Optional <input type="checkbox"/>
<i>Dealer Reference: Service Bulletin No. WSB2010-001</i>		



PURPOSE: This kit provides the necessary parts and instructions to replace existing pintle eye with new heavier version.



WARNING: Material stresses during towing can result in bending and/or fatigue fractures of the pintle eye. If fractures occur, it can result in complete separation of the tongue from the towing vehicle. **Death of serious injury is possible if tongue separates from the towing vehicle while being towed on a public roadway.**

SPECIAL TOOLS AND CONDITIONS:

- Torch or Hand Plasma Cutter
- Suitable Lifting Device capable of lifting 400 lb (180 kg)
- Grinder
- Qualified Welder
- Black Spray Paint



WARNING: Use the following shutdown procedure before attempting to do any work described in this Kit.

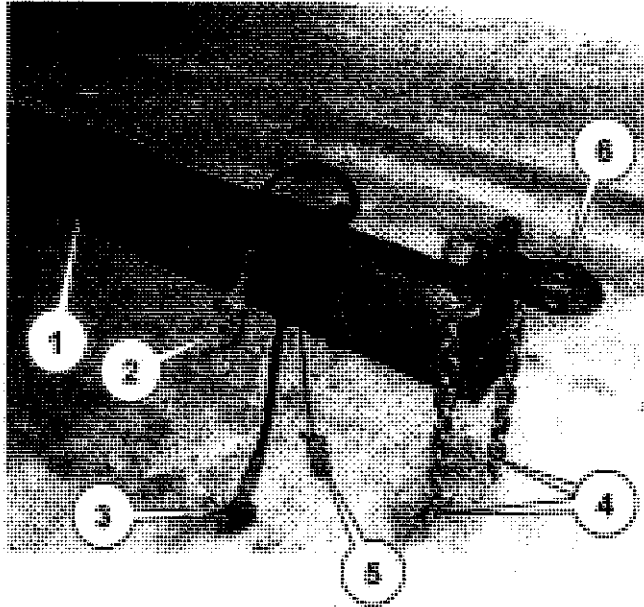
1. Operate trommel screen until all material has emptied from the feed hopper, apron conveyor, drum, and all output conveyors.
2. Shutdown the trommel functions in the following order:
 - a. Wait for conveyor to empty and shut off apron conveyor.
 - b. Wait for drum to empty and shut off drum.

- c. Wait for conveyors to empty and shut off fines and overs conveyor.
3. Reduce engine speed to idle.
4. Turn keyswitch to OFF and remove key.
5. If remote control was in use, shut off remote.

PROCEDURE:

1. Park machine on flat level surface. Disconnect and move tow vehicle away from tongue and pintle eye.
2. Remove air brake hoses (2) and (3) along with electrical harness (5) from top of tongue (1) Figure A.
3. Remove both tongue lock pins under machine frame. Using a suitable lifting device capable of lifting 400 lb, remove the tongue weldment from the frame and place on saw horses.
4. Remove and retain hardware and highway towing chains (4) Figure A from end of tongue.
5. Remove and discard cotter pin, nut, spacer, and pintle eye (6) Figure A.
6. Using torch or plasma cutter, remove upper 4-½" of pintle eye mounting plate and towing chain gussets per WC-0110B. Grind top of tongue tube flush and remove paint from welding surfaces per drawing WC01-0110D.
7. With assistance from qualified welder, position and weld new pintle mounting plate WC0-0110C to modified tongue tube, Ref drawing WC0-0110D. Rotate tongue tube on saw horses to allow horizontal position welding of all new welds..
8. After parts have cooled, clean weld area, install new pintle eye P/N TRL-11200, spacer P/N 32773, and nut. Torque nut to 300 ft-lb (407 Nm) and install new cotter pin. Paint new parts and weld area black.
9. Reinstall tongue into frame and secure with two locking pins. Reroute and secure brake line hoses and electrical harness to front of tongue.
10. Install highway safety chains with retained hardware from step 4.
11. Remove WC01-0110E and provide to unit owner to place with existing parts manual. The delivery of this page to the unit owner can be accomplished by attaching the page to the customer's copy of the Invoice or placing the page in the unit's manual storage box.

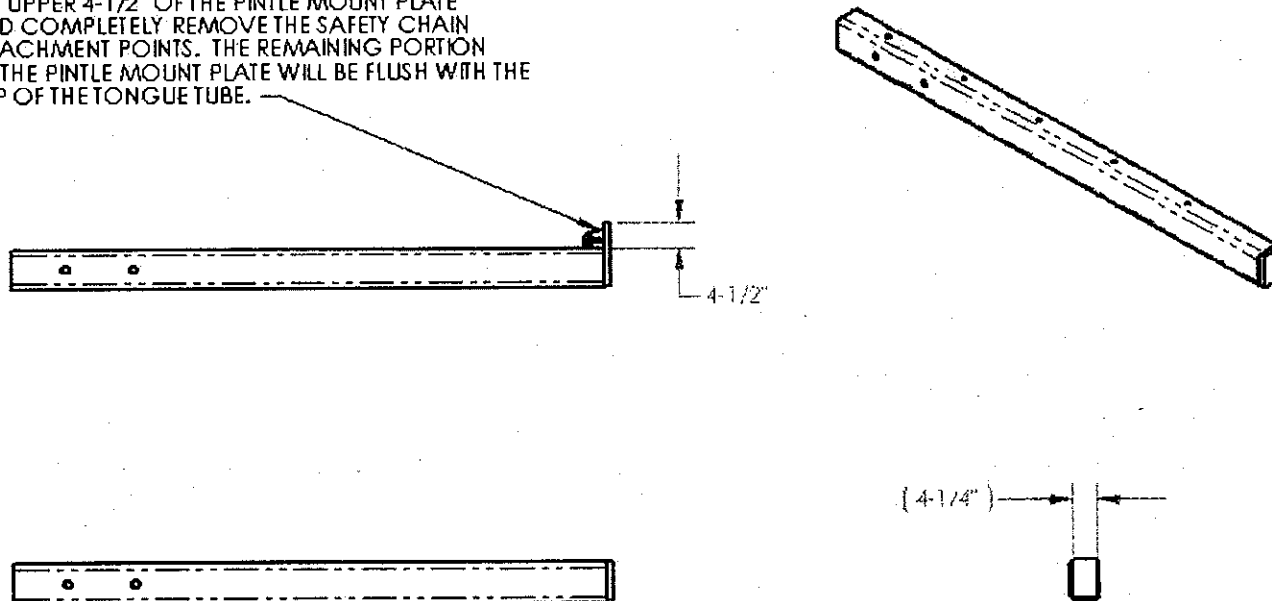
Figure A




UNIT OWNER COPY: Insert in Parts Manual for future reference.

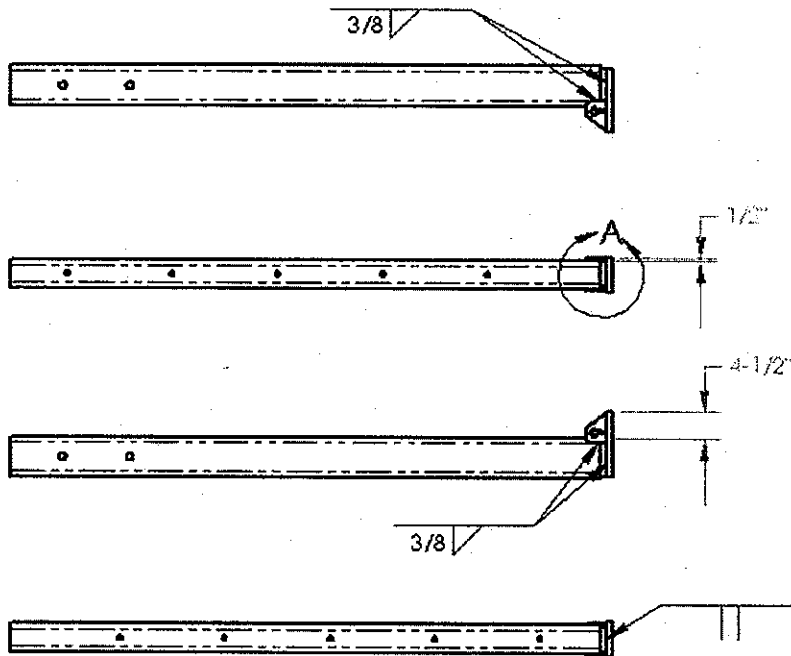
PART NO.	DESCRIPTION	QTY
WC01-0110C	PINTLE MNT UPDATE	1
TRL-11200	PINTLE DRAWBAR	1
32773	SPACER TUBE	1

STEP 2: USING A PLASMA CUTTER, REMOVE THE UPPER 4-1/2" OF THE PINTLE MOUNT PLATE AND COMPLETELY REMOVE THE SAFETY CHAIN ATTACHMENT POINTS. THE REMAINING PORTION OF THE PINTLE MOUNT PLATE WILL BE FLUSH WITH THE TOP OF THE TONGUE TUBE.



A		DO NOT SCALE DRAWING	Wt: 429.00 lb	Assy: WC01-0110C
SECTION PROJECTION	1	FACE 1	MAIL	1/4"
OTHER SPEC. DIMS. IN INCHES AND YRS-1982 W.P.S. 10-A-100 STD. TOLERANCES X.XX ± .000 X.XXX ± .010	DESCRIPTION		MODEL	NOTICE: THIS DOCUMENT AND ITS CONTENTS ARE THE PROPERTY OF WILDCAT MANUFACTURING COMPANY. NO USE OR COPIES MAY BE MADE WITHOUT WRITTEN PERMISSION FROM WILDCAT
FINISH	WLD.T.HITCH,PINTLE		510	 A Vermeer Company
ITEM NUMBER	WCO1-0110B	REVISION	A	
DATE	1/27/2010	DISCH BY	KV	

NOTE: DO NOT UNDERCUT WELDS



DETAIL A
 SCALE 1:4

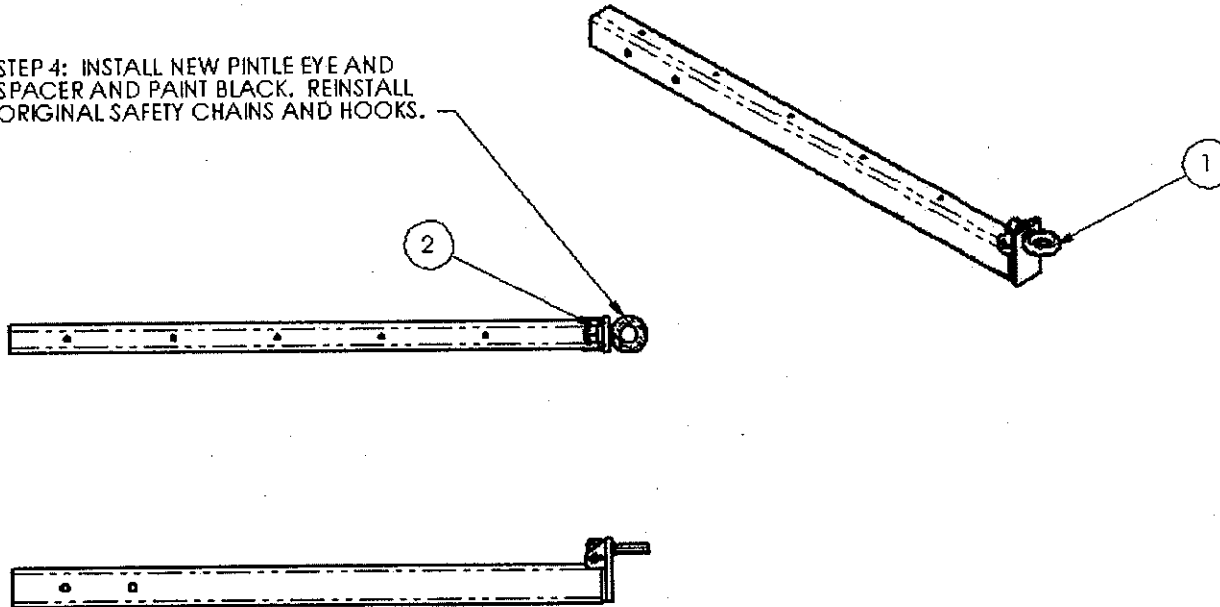
STEP 3: INSTALL PINTLE UPDATE SUBWELDMENT
 AS SHOWN ABOVE.

ITEM	QTY	PART NO.	DESCRIPTION	LENGTH	WIDTH
1	1	WC01-0110B	WLDT, HITCH, PINTLE		
2	1	WC01-0110C	PINTLE, MNT, UPDATE		


A		DO NOT SCALE DRAWING	Wt: 449.50 lb	Assy: WC01-0110E
STANDARD PROJECTION	1	FAC 1	MAIN	ICH
STRESS	DESCRIPTION	MODIF	NOTICE: THIS DOCUMENT AND ITS CONTENTS ARE THE PROPERTY OF WILDCAT MANUFACTURING COMPANY. NO USE OR COPIES MAY BE MADE WITHOUT WRITTEN PERMISSION FROM WILDCAT	
OTHER SEE SPEC. DIMS IN INCHES AND FIGS. 1-192 W.P. 11-1-1100 SID. DIMENSIONS X.X X.D00 X.XX X.D00 X.XXX X.D00 FRACTION & 1/32 DEC. & 1	DESCRIPTION WLDT, PINTLE, UPDATE	MODIF 510		
	ITEM NUMBER WC01-0110D	REVISION A		
	DESIGN BY KV	DATE 1/27/2010		




STEP 4: INSTALL NEW PINTLE EYE AND SPACER AND PAINT BLACK. REINSTALL ORIGINAL SAFETY CHAINS AND HOOKS.



ITEM	QTY	PART NO.	DESCRIPTION	LENGTH	WIDTH
1	1	TRL-11200	PINTLE, DRAWBAR		
2	1	32773	TBG, RND, 3,2-1/16, 11/16	7/8	-

A		DO NOT SCALE DRAWING	WT: 464.26 lb	Assy: WC-20760
STANDARD PROJECTION	1	PAGE 1	SCALE	ICM
FINISH OTHERWISE SPEC. DIM. IN INCHES ANSI Y14.5-1982 W. J. S. 11-A-100 SID. TOLERANCES XX ± .005 X .001 ± .000 X .000 ± .000 FMC, DIA. & 1/32 DIA. & 1	DESCRIPTION ASSY, PINTLE, UPDATE		MODEL 510	NOTICE: THE DOCUMENT AND ITS CONTENTS ARE THE PROPERTY OF WILDCAT MANUFACTURING COMPANY. NO USE OR COPIES MAY BE MADE WITHOUT WRITTEN PERMISSION FROM WILDCAT.
PART NUMBER WC01-0110E		REVISION A	 A Tenneco Company	
DESIGN BY KV		DATE 11/27/2010		





NO POSTAGE
NECESSARY
IF MAILED
IN THE
UNITED STATES

BUSINESS REPLY MAIL
FIRST-CLASS MAIL PERMIT NO. 56 PELLA, IOWA

POSTAGE WILL BE PAID BY ADDRESSEE

Vermeer Mfg. Co.
Attn: Product Safety Dept.
Box 200
Pella, Iowa 50219-9986





REF. NO.	PART NO.	DESCRIPTION	QTY.
1	296287039	Work Completion Certificate	1