



**BLUE BIRD**

## FINAL NOTICE

**DATE: FEBRUARY 09, 2012**

**TO: BLUE BIRD OWNERS**

**SUBJECT: RECALL R10SL STARTER CABLE AND ENGINE WIRING  
HARNES MAY CONTACT FAN HUB**

According to our records, we have not received a response that the above referenced recall notification dated September 24, 2010 pertaining to certain 2007 and 2011 model year Blue Bird All American front engine model school and non school buses has been completed. Your affected buses are identified by Blue Bird body number on the enclosed pink cover sheet for Recall R10SL.

On the subject buses, an incorrect combination of flat washer and serrated nut may have been installed on the bolt that secures the starter cable and engine wiring harness retaining clamp to its attaching bracket at the front of the engine above the engine cooling fan. The presence of the flat washer could prevent the serrated nut from locking against the attaching bracket, and over time, cause the serrated nut to loosen allowing the starter cable and engine wiring harness to fall and contact the engine fan hub while in operation. If the starter cable or engine wiring harness contacts the engine fan hub while the fan is in operation, the cable and/or harness covering may abrade which could result in a direct short. A direct short could potentially result in a vehicle fire.

If this is the first time you received notification of Recall R10SL, please read the notification carefully and follow the instructions provided.

If you have already performed the inspection and, if necessary, made the changes as outlined in the attached Recall R10SL notification please complete and mail the enclosed R10SL pink completion reply sheet to us in the enclosed postage paid pink reply envelope so we may update our recall records.

Thank you for your prompt attention to this matter.

Sincerely,

Bill Coleman  
Corporate Recall Administrator

**BLUE BIRD BODY COMPANY**

P.O. Box 937 – 402 Blue Bird Blvd – Fort Valley, Georgia – (478) 825-2021



BLUE BIRD

R10SL

September 24, 2010

Dear Blue Bird Owner:

This notice is sent to you in accordance with the requirements of the National Traffic and Motor Vehicle Safety Act.

Blue Bird has decided that a defect which relates to motor vehicle safety exists on certain 2007-2011 model year All American front engine school and non school buses manufactured from May 26, 2006 through August 07, 2010 and certain 2007 model year Commercial Series front engine non school buses manufactured from May 16, 2007 through March 14, 2008.

On the subject buses, an incorrect combination of flat washer and serrated nut may have been installed on the bolt that secures the starter cable and engine wiring harness retaining clamp to its attaching bracket at the front of the engine above the engine cooling fan. The presence of the flat washer could prevent the serrated nut from locking against the attaching bracket, and over time, cause the serrated nut to loosen allowing the starter cable and engine wiring harness to fall and contact the engine fan hub while in operation. If the starter cable or engine wiring harness contacts the engine fan hub while the fan is in operation, the cable and/or harness covering may abrade which could result in a direct short. A direct short could potentially result in a vehicle fire.

Blue Bird is conducting a recall to correct this defect. Buses with this defect must be modified according to the enclosed instructions for Recall R10SL.

**You may contact your Blue Bird dealer to arrange to have this recall performed. Or, if you prefer, you may perform this recall yourself or have a qualified repair facility convenient to you perform this recall. A qualified technician should perform this recall.**

Your Blue Bird bus(es) affected by this recall are identified by body serial number(s) on the enclosed reply sheets. If you no longer own the subject bus(es), please complete the sold to section of the **labor reimbursement** sheet and return to Blue Bird in the enclosed pink postage prepaid envelope.

**To receive replacement locknuts and washers to correct this condition, you must return the yellow recall reply sheet to Blue Bird in the pink, self addressed, postage prepaid envelope. Be sure to provide a valid shipping address as UPS does not deliver to P.O. Boxes.**

**BLUE BIRD BODY COMPANY**

P.O. Box 937 – 402 Blue Bird Blvd – Fort Valley, Georgia – (478) 825-2021

Labor time to install new locknuts and flat washers and inspect the routing of the starter cable and engine wiring harness is 0.5 hrs (30 minutes) per bus.

Reimbursement for labor may be obtained by completing the **pink recall request for reimbursement sheet** provided and returning it to Blue Bird in the enclosed **pink** postage prepaid envelope. If reimbursement is not desired, please complete the bottom portion of the pink reply sheet and return to Blue Bird in the enclosed pink reply envelope so we may update our records to show recall R10SL has been completed.

If the modifications directed by this notification were performed on your bus prior to the receipt of this recall notification, complete and sign the recall reply sheet and attached a copy of the work order/invoice. Mail the documents in the **pink** self-addressed postage paid envelope included with the recall notification to Blue Bird for warranty consideration. Reimbursements will be made in accordance with the requirements of the National Highway Transportation Safety Act, Title 49 Code of Federal Regulations, Parts 573 and 577.

Federal law requires that any vehicle lessor receiving this recall notice must forward a copy of this notice to the lessee within ten days.

If Blue Bird Body Company should fail to or is unable to remedy this condition without charge to you, you may contact:

**ADMINISTRATOR  
NATIONAL HIGHWAY TRAFFIC SAFETY ADMINISTRATION  
1200 NEW JERSEY AVENUE, SE  
WASHINGTON, D.C. 20590**

Or, you may call The National Highway Traffic Safety Administration toll free at:

1-888-327-4236  
TTY 1-800-424-9153

Or, go to: [HTTP://WWW.SAFERCAR.GOV](http://WWW.SAFERCAR.GOV)

Questions regarding this recall campaign should be directed to me at (478) 822-2242.

Thank you,



Bill Coleman

Corporate Recall Administrator  
**BLUE BIRD CORPORATION**

**BLUE BIRD BODY COMPANY**  
P.O. Box 937 – 402 Blue Bird Blvd – Fort Valley, Georgia – (478) 825-2021



# Starter Cable and Wiring Harness May Contact Engine Fan Hub

# RECALL

**Models Affected:** 2007 – 2011 All American (A3FE) and Commercial Series (C3FE), and 2010-2011 All American (D3FE) equipped with Cummins ISB Engines

## ISSUE

The ¼” serrated flange head nuts that secures the starter cable and engine wiring harness to the mounting brackets located on the front of the engine may become loose and fall off allowing the cable and harness to contact engine fan drive belt or the fan clutch assembly.

## CORRECTIVE ACTION

Replace ¼” serrated head flange nut with a ¼” locking nut, add a flat washer and inspect starter cable and engine wiring harness.

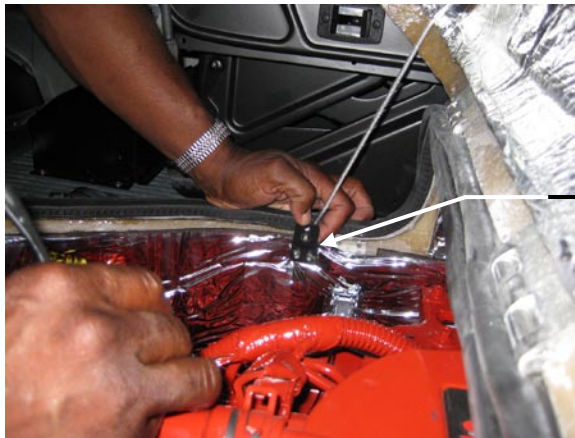
## PROCEDURE

**WARNING:** Always follow all Federal, State, Local and Shop safety standards and use proper safety equipment when performing these procedures. Thoroughly read and understand all instructions before performing this procedure.

**CAUTION:** Engine **MUST** be at ambient temperature before performing these procedures.

### All American (A3FE and C3FE)

1. Park bus on a level surface, applying parking brake, switch engine off, remove ignition key and chock wheels. Disconnect batteries. **Always remove negative cable first.**
2. Open engine hood and disconnect hood stop cable from inside cover assembly by removing a ½ x 24 machine screw and 10-24 hex locknut.



Remove machine screw and locknut

3. Locate the two latches on each side and one latch at the rear and release the latches.
4. Remove cover assembly and move it away from the engine to access the front fan area.

RECALL CAMPAIGN R I O S L



# Starter Cable & Wiring Harness May Contact Engine Fan Hub

# RECALL

- 5 Inspect the starter cable and wiring harness from the right side of the engine, across front of engine to left side of engine for any chaffing, rubbing or damage. If starter cable and wiring harness shows any evidence of damage, contact Blue Bird Recall Administration.

Area of Left side support Bracket, See photos in step 8



Area of Right side support Bracket, See photo in Step 7

- 6 One starter cable and wiring harness support is located on the right side of the engine between the alternator and engine fan.
- 7 Remove and discard the ¼" serrated nut (and flat washer if installed). Install the new ¼" locknut (0145847) and flat washer (01247709) provided. Torque nut to 60-85 in. lbs. Note: two complete threads must extend completely through the nut.



Replace with new locknut and flat washer (Note: new locknut shown)

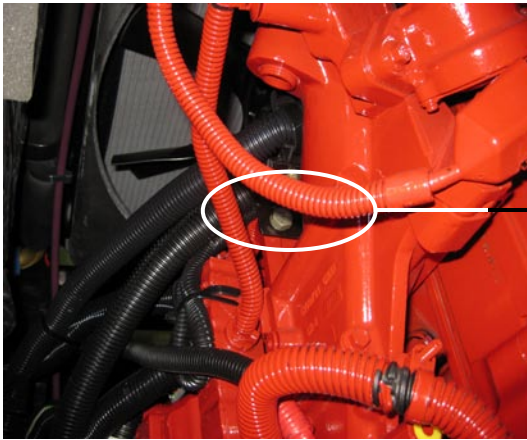
R I O S L  
R E C A L L C A M P A I G N



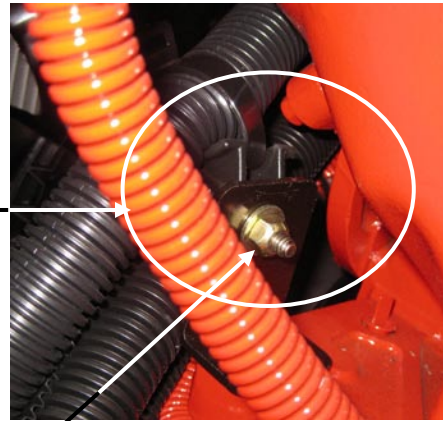
## Starter Cable & Wiring Harness May Contact Engine Fan Hub

# RECALL

8. The second starter cable and wiring harness support is located on the front left side of the engine block.
9. Remove and discard the  $\frac{1}{4}$ " serrated nut (and flat washer if installed). Install the new  $\frac{1}{4}$ " locknut (0145847) and flat washer (01247709) provided. Torque nut to 60-85 in. lbs. Note: two complete threads must extend completely through the nut.



Left Side support



Replace with new locknut and flat washer (Note: New locknut shown)

10. Reinstall the engine cover assembly with the latches. After the latches have been snapped in place, reattach the cable on the inside cover assembly with  $\frac{1}{2}$  x 24 machine screw and 10-24 hex locknut removed in earlier step. Reconnect the batteries.

**Caution:** When reconnecting the batteries, connect the negative last.

11. Place bus back in service.

R I O S L

C A M P A I G N

R E C A L L

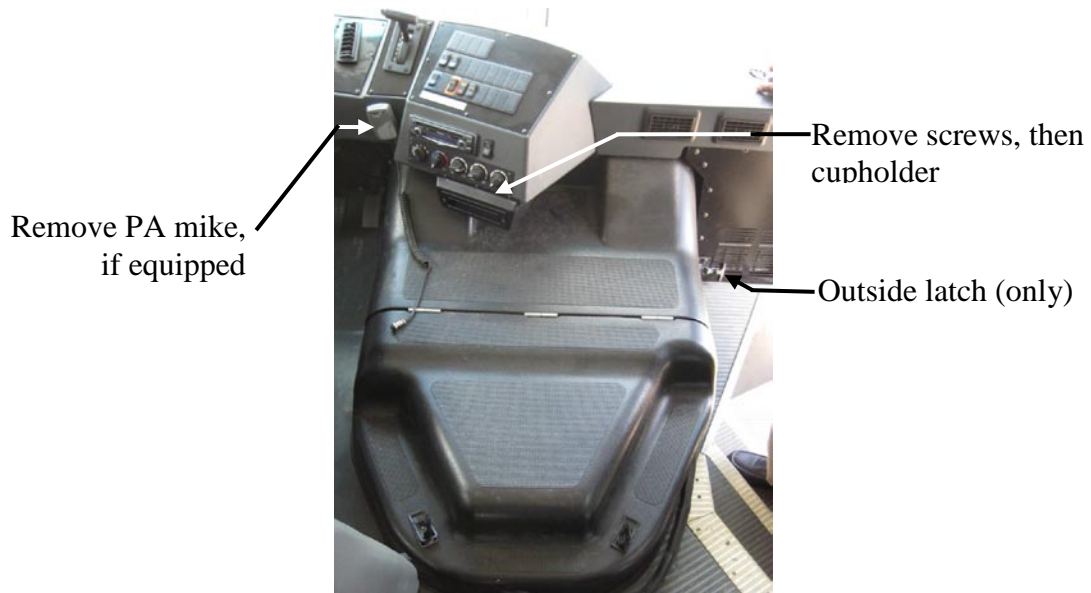


# Starter Cable & Wiring Harness May Contact Engine Fan Hub

# RECALL

## All American (D3FE)

1. Park bus on a level surface, applying parking brake, switch engine off, remove ignition key and chock wheels. Disconnect batteries. **Always remove negative cable first.**
2. To remove engine cover assembly to access front of engine:
  - a. Remove cup holder by removing the Phillip head screws on the front of center console.
  - b. Remove the PA microphone if equipped.
  - c. Pull to release the rubber handle latch anchor located at the right hand lower front wall of the engine cover assembly.
  - d. Open hood and locate the four latches on the inside of hood. One is located on the driver's side toward the front, one on each side and one at rear center. Release these latches and remove engine cover assembly for access to front of engine.



3. Inspect the starter cable and wiring harness from the right side of engine, across front of engine to left side of engine for any chaffing, rubbing or damage. If starter cable and wiring harness shows any evidence of damage, contact Blue Bird Recall Administration.

R I O S L

R E C A L L C A M P A I G N



# Starter Cable & Wiring Harness May Contact Engine Fan Hub

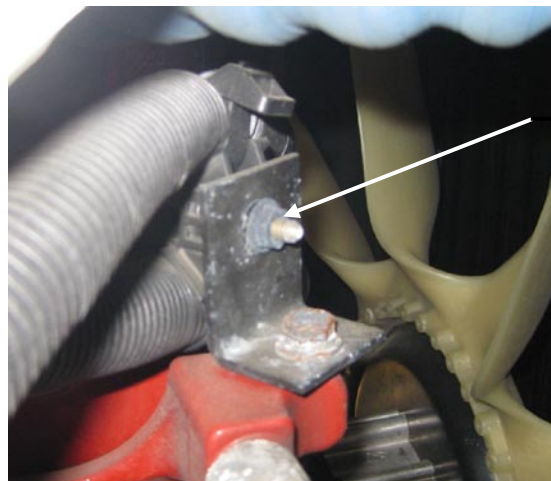
# RECALL

Area of Left Side Support Bracket, see photos in step 6



Area of Right Side Support Bracket, see photo in step 5

- 4 One starter cable and wiring harness support is located on the right side of the engine between the alternator and engine fan.
5. Remove and discard the ¼" serrated nut (and flat washer if installed). Install the new ¼" locknut (0145847) and flat washer (01247709) provided. Torque nut to 60-85 in. lbs. Note: two complete threads must extend completely through the nut.



Replace serrated nut (shown) with new locknut and flat washer

6. The second starter cable and wiring harness support is located on the front left side of the engine block.

R I O S L

R E C A L L C A M P A I G N

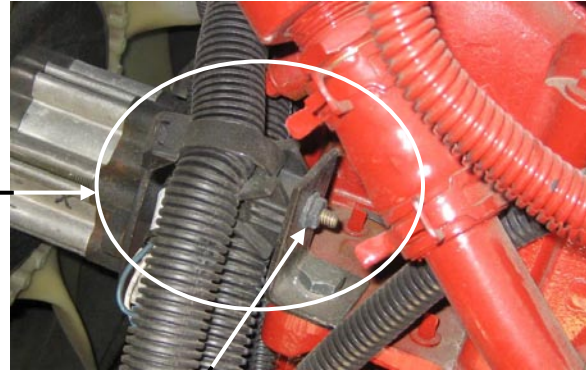


# Starter Cable & Wiring Harness May Contact Engine Fan Hub

# RECALL



Left Side Support



Replace serrated nut (shown) with locknut and flat washer

- 7 Remove and discard the 1/4" serrated nut (and flat washer if installed). Install the new 1/4" locknut (0145847) and flat washer (01247709) provided. Torque nut to 60-85 in. lbs. Note: two complete threads must extend completely through the nut.
  8. Reinstall the engine cover assembly by reversing the steps above. Reconnect the batteries.
- Caution:** *When reconnecting the batteries, connect the negative cable last.*
9. Place bus back in service.

## PARTS LIST

PART NUMBER	DESCRIPTION	QUANTITY
01455947	Nut, Hex Head, 1/4 -20, Locking, Nylon Insert	2
01247709	Washer, Flat, 17/64 ID X 5/8 OD	2

R I O S L  
R E C A L L C A M P A I G N