



The First Name In Trailers

SERVICE BULLETIN NO. SB-08-131

Issue date: October 8, 2010

For Dealer Use Only:

**SUBJECT: ArvinMeritor – Technical Bulletin – Safety Recall:
Lower Axle Seat Weld Inspection and Repair for Meritor RideSentry™**

The following is to inform the UTM Dealership Network of a Meritor axle campaign. Inspect that the axle seats are welded properly. Tack welds are not acceptable.

***See attached:** Picture - example of axle seat welded properly.

***See attached:** Tech Bulletin TP-10172 - Lower Axle Seat Weld Inspection and Repair for Meritor RideSentry™

For Claim Handling: Contact Ontrac with the VIN, Suspension Serial Number, etc....

***See attached:** Availability of Replacement Parts and Service Instructions.

NOTE: Not all axle seats require repair. Only axle seats welds that are missing should be repaired. If you are the selling dealership for these trailers, conduct an Inspection Recall and Repair Immediately.

***Contact Ontrac prior to the inspection.

The following TSNs were affected in this recall per WN: 10716

BU0839 1-30

BU0979 1-20

BU1170 1-07

BU1062 1-70

BM0832 1-2

BP1382 1-60

For Dealer Use Only:

Do Not Send to Others Outside the UTM Dealership Network. Bulletins Posted Via www.utm.com Are Intended for Internal Use Only.

Any questions regarding the content of their document may be directed to:

Ontrac at (866) 668-7221 or ontrac@ArvinMeritor.com

Any other questions regarding this service bulletin should be directed to Utility's Field Service Department at 800-423-6591.

Field Service Department

UTILITY TRAILER MANUFACTURING COMPANY

MERITOR[®]
an **ArvinMeritor** brand

Technical Bulletin

Lower Axle Seat Weld Inspection and Repair for Meritor RideSentry™ MPA Series Sliding Tandem Trailer Air Suspension Systems

Hazard Alert Messages

Read and observe all Warning and Caution hazard alert messages in this publication. They provide information that can help prevent serious personal injury, damage to components, or both.

⚠ WARNING

To prevent serious eye injury, always wear safe eye protection when you perform vehicle maintenance or service.

Park the vehicle on a level surface. Block the wheels to prevent the vehicle from moving. Support the vehicle with safety stands. Do not work under a vehicle supported only by jacks. Jacks can slip and fall over. Serious personal injury and damage to components can result.

How to Obtain Additional Maintenance and Service Information

Refer to Maintenance Manual 14R, RideSentry™ MPA Series Sliding Tandem Trailer Air Suspension System; and Technical Bulletin TP-0777, Installing RideSentry™ Suspension Axle Seats onto RideStar™ RHP Series Single-Axle and Sliding Tandem Trailer Air Suspension Systems. To obtain these publications, visit Literature on Demand at arvinmeritor.com.

Inspection Procedure

1. Wear safe eye protection. Park the vehicle on a level surface. Block the wheels to prevent the vehicle from moving.
2. From underneath the trailer, inspect the lower axle seat welds as follows.
 - A. Check that there are a total of four welds per axle seat side (two lower axle seats welded on each side). Figure 1.
 - B. Verify the welds are nominally 1.5-inches (38 mm) long and 0.25-inch (6.35 mm) wide on each side of the lower axle seat onto the axle. The welds should not be more than 1.5-inches (38 mm) long. Figure 2.

- If any welds are missing or incomplete: Call ArvinMeritor's OnTrac Customer Service Center at 866-OnTrac1 (668-7221) for repair authorization. Refer to Contact the ArvinMeritor OnTrac Customer Service Center at the end of this bulletin. Once you receive authorization, perform the Weld Repair Procedure in this bulletin.

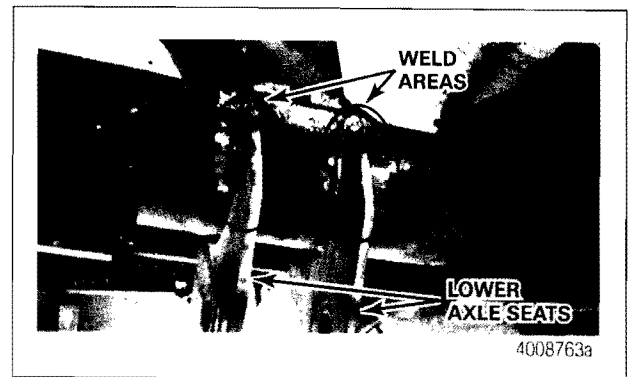


Figure 1

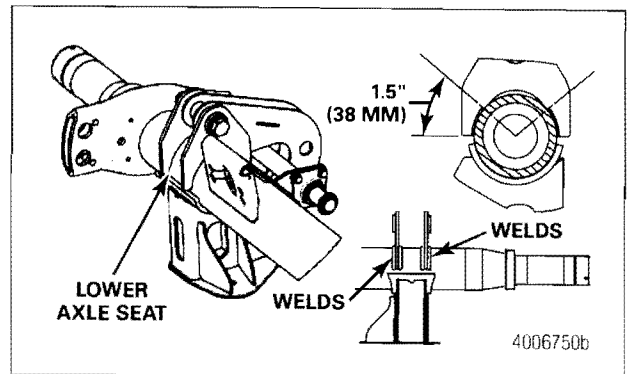


Figure 2

3. Inspect the lower axle seat welds on the other end of the axle using the same procedure.

Weld Repair Procedure

⚠ WARNING

You must follow correct welding procedures and weld at locations authorized by Meritor when you weld to suspension components. Welding at locations other than those authorized by Meritor will void the warranty and can reduce trailer axle fatigue life. Serious personal injury and damage to components can result.

Wear safe clothing and eye protection when you use welding equipment. Follow instructions provided by welding equipment manufacturers to prevent serious personal injury and damage to components.

Do not weld over the end of the lower seats. Weld repairs to the axle seat must not extend more than 1.5-inches (38 mm). Welds longer than this specification may result in premature fatigue fractures to the axle tube. Serious personal injury and damage to components can result.

1. Wear appropriate clothing and eye protection when using welding equipment. Refer to Maintenance Manual 8 for complete welding instructions.
2. Use 0.035 E70 wire and 75/25 gas to weld the missing or incomplete areas. Make each weld 1.5-inches (38 mm) long and 0.25-inch (6.35 mm) wide. Welds should not be longer than 1.5-inches (38 mm). Do not weld over the end of the lower seats. Figure 2.
3. When you have finished, verify there is a total of eight complete welds, (two lower axle seats welded on each side). Continue repairs on the other end of the axle, if necessary.

Contact the ArvinMeritor OnTrac Customer Service Center

Call ArvinMeritor's OnTrac Customer Service Center at 866-OnTrac1 (668-7221) (United States and Canada) between 8:00 AM and 8:00 PM ET Monday through Friday, and between 9:00 AM and 6:00 PM ET on Saturday. After selecting "preferred language," select "Option 7." The OnTrac representative will need the following information to give the repair facility the permission to proceed with the work. The OnTrac representative will also provide you with complete parts return information.

- Complete 17-digit vehicle identification number (VIN)
- ArvinMeritor axle model and serial number. Figure 3.
- Vehicle owner's name, address and telephone number
- Vehicle in-service date
- Repair facility's name, address and telephone number
- Repair facility's hourly rate

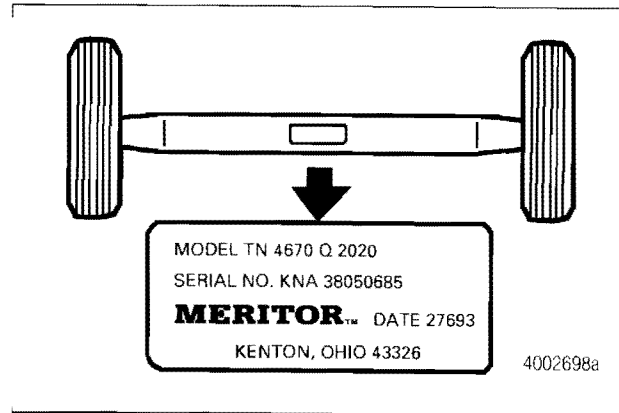


Figure 3

ArvinMeritor™

Meritor Heavy Vehicle Systems, LLC
2135 West Maple Road
Troy, MI 48084 USA
866-OnTrac1 (668-7221)
arvinmeritor.com

Information contained in this publication was in effect at the time the publication was approved for printing and is subject to change without notice or liability. Meritor Heavy Vehicle Systems, LLC, reserves the right to revise the information presented or to discontinue the production of parts described at any time.

Copyright 2010
ArvinMeritor, Inc.
All Rights Reserved

Printed in USA

TP-10172
Issued 09-10
(16579)

Availability of Replacement Parts and Service Instructions

Replacement parts are currently available and if needed will be provided by ArvinMeritor at no cost. Vehicle manufacturers' (OEM) or repair facilities should obtain replacement parts by contacting ArvinMeritor's OnTrac Performance Plus Call Center using any of the below methods.

Contact: OnTrac Performance Plus Call Center, follow the menu system for the appropriate language and select option number 5

Phone: 1-866-668-7221

Fax: 248-435-5580

Email: ontrac@ArvinMeritor.com

Parts, Labor and Handling Allowance

The following are the details of allowances relating to parts, labor and handling available to vehicle manufacturers' (OEM):

- ArvinMeritor will reimburse at the standard repair time (SRT) of 1 hour for vehicle inspection and will reimburse up to 1 hour per axle seat requiring weld repair.

Claims for Credit

ArvinMeritor will accept warranty claims for inspecting and replacing the suspect studs associated with this notice directly from the vehicle manufacturers (OEM). In order to receive proper credit, such warranty claims must contain the following information at the time of submission:

- Reference to ArvinMeritor Campaign ID Number C10AB
- Reference to NHTSA Campaign ID Number : 10E-047
- Reference to the vehicle manufacturer's campaign number (optional)
- 17-digit vehicle identification number (VIN)
- Axle model and serial number
- Vehicle owner's name, address, and telephone number
- Vehicle in-service date
- Vehicle repair date
- Vehicle mileage at the time of repair (if available)
- Repair facility work order number
- Repairing facility name, address, and telephone number
- Total labor hours required performing the work, not to exceed agreed amount
- Repair facilities hourly rate
- If weld is missing, include axle seat location (e.g. Left Front, Right Rear)

Failure to provide complete information will delay processing of the claim.



Questions relating to warranty claims, replacement parts delivery and parts disposition can be addressed to the ArvinMeritor OnTrac Performance Plus Call Center using any of the below methods.

Contact: OnTrac Performance Plus Call Center, follow the menu system for the appropriate language and select option number 5

Phone: 1-866-668-7221

Fax: 248-435-5580

Email: ontrac@ArvinMeritor.com

Communication

If you conclude that ArvinMeritor has not enabled you to remedy this condition in a reasonable time, you may submit a complaint to the:

Administrator
National Highway Traffic Safety Administration
1200 New Jersey, S.E.
Washington, D.C. 20590

- or -

Call the toll free Vehicle Safety Hotline: 1-888-327-4236; (TTY: 800-424-9153
or go to <http://www.safercar.gov>

We regret any inconvenience that this situation may cause. ArvinMeritor wants to assure you that we are concerned for customer safety and your continued satisfaction with our products.

Sincerely,

ArvinMeritor

Jeremy Tertzakian
OnTrac Technical Manager

Attachments:



OFFICE OF DEFECTS INVESTIGATION (ODI)

Recalls - Search Results

1 Record(s) Displayed.

Report Date : **October 12, 2010 at 03:45 PM**

NHTSA CAMPAIGN ID Number: **10E047000**

Equipment Brand Name / Part No. or Model No.:

ARVINMERITOR / MPA

Manufacturer: ARVINMERITOR, INC

NHTSA CAMPAIGN ID Number: 10E047000

Component: SUSPENSION

Potential Number of Units Affected: 719

Summary:

ARVINMERITOR IS RECALLING CERTAIN MPA TRAILER SUSPENSION SYSTEMS INSTALLED AS ORIGINAL EQUIPMENT ON VARIOUS HEAVY TRUCKS. THE SYSTEMS WERE SHIPPED TO VEHICLE MANUFACTURERS BETWEEN APRIL 12, 2010, AND JUNE 30, 2010. THE SUSPECT SYSTEMS MAY HAVE MISSING WELDS AT THE INTERFACE OF THE LOWER SEAT BRACKET AND AXLE BEAM.

Consequence:

MISSING WELDS COULD ALLOW THE AXLE TO ROLL OUT OF POSITION AND POTENTIALLY IMPACT THE HANDLING OF THE TRAILER, INCREASING THE RISK OF A CRASH.

Remedy:

ARVINMERITOR IS WORKING WITH THE VEHICLE MANUFACTURERS TO IDENTIFY OWNERS WITH THE AFFECT SUSPENSION SYSTEMS. THE AFFECTED VEHICLES WILL BE REPAIRED FREE OF CHARGE. THE SAFETY RECALL IS EXPECTED TO BEGIN DURING OCTOBER 2010. OWNERS MAY CONTACT ARVINMERITOR AT 1-248-435-0896 OR THEIR VEHICLE MANUFACTURER.

Notes:

ARVINMERITOR'S RECALL CAMPAIGN NUMBER IS C10AB. OWNERS MAY ALSO CONTACT THE NATIONAL HIGHWAY TRAFFIC SAFETY ADMINISTRATION'S VEHICLE SAFETY HOTLINE AT 1-888-327-4236 (TTY 1-800-424-9153), OR GO TO [HTTP://WWW.SAFERCAR.GOV](http://www.safercar.gov).