

# Passport Pre-Recall Inspection

## WARRANTY CLAIM INFORMATION

OP#	Description	FRT
4195A1	Inspect the trailing link front brackets.	0.2
A	Add for removing and reinstalling side steps or running boards.	0.9

Failed Part: P/N 8-97366-503-0  
Defect Code: 5XZ00  
Symptom Code: R4800  
Skill Level: Repair Technician

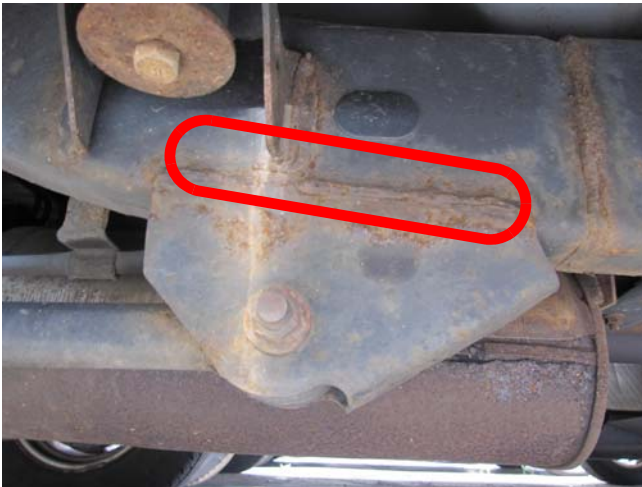
## TOOL INFORMATION

10–12-ounce hammer: Commercially available  
3/16 in. x 9 in. flat punch: Commercially available

## INSPECTION PROCEDURE

NOTE: Inspect both sides of the vehicle.

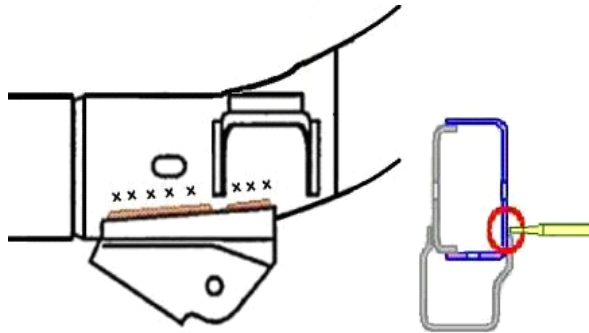
1. Raise the vehicle on a lift. Make sure the rear lifting points are at least 12 inches (300 mm) ahead of the rear trailing link front mounting bolts to allow enough clearance for the inspection.
2. Visually inspect the trailing link front brackets (where they attach to the frame) for cracks or holes in the red circled area.
  - If there are no cracks or holes, go to step 3.
  - If you see cracks or holes, remove the side steps or running boards (if applicable), then go to step 6.



3. Compare the vehicle's bracket area to the photo above.
  - If the vehicle's bracket area is rusted to a similar or lesser degree than the bracket shown in the photo, no further action is needed at this time.
  - If the vehicle's bracket area is rusted to a greater degree than that in the photo, go to step 4.

4. If the vehicle has side steps or running boards, remove them.
5. Use a 3/16 in. x 9 in. flat punch and a 10–12-oz. hammer to strike the frame areas marked X in the illustration below. Swing the hammer with a 10 to 12 in. stroke to be sure enough force is applied to the punch.

- If the punch doesn't poke a hole in any of the X-marked areas on the frame, no further action is needed at this time. Reinstall the side steps or running boards (if removed).
- If the punch pokes a hole in any of the X-marked areas, go to step 6.



6. Use the punch and the hammer to strike the frame corners on each of the X-marked areas in the illustration below. Again, swing the hammer with a 10 to 12 in. stroke to be sure enough force is applied to the punch.
  - If the punch doesn't poke a hole in any of the X-marked areas, no further action is needed at this time. Reinstall the side steps or running boards (if removed).
  - If the punch pokes a hole in any of the X-marked areas, **the vehicle is unsafe to drive.** For further instructions, call Honda Automobile Customer Service at 800-999-1009, and select option 4.

