



# Starter Cable and Wiring Harness May Contact Engine Fan Hub

# RECALL

**Models Affected:** 2007 – 2011 All American (A3FE) and Commercial Series (C3FE), and 2010-2011 All American (D3FE) equipped with Cummins ISB Engines

## ISSUE

The ¼” serrated flange head nuts that secures the starter cable and engine wiring harness to the mounting brackets located on the front of the engine may become loose and fall off allowing the cable and harness to contact engine fan drive belt or the fan clutch assembly.

## CORRECTIVE ACTION

Replace ¼” serrated head flange nut with a ¼” locking nut, add a flat washer and inspect starter cable and engine wiring harness.

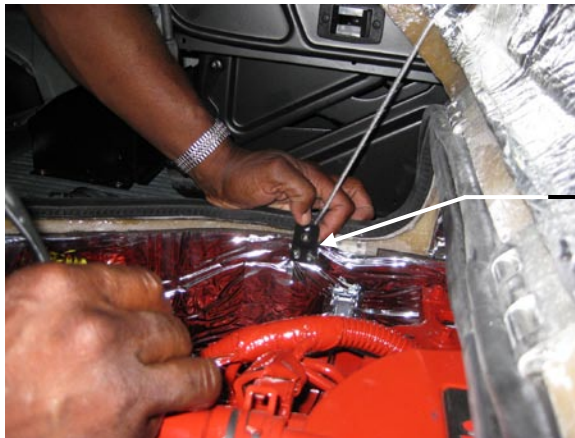
## PROCEDURE

**WARNING:** Always follow all Federal, State, Local and Shop safety standards and use proper safety equipment when performing these procedures. Thoroughly read and understand all instructions before performing this procedure.

**CAUTION:** Engine **MUST** be at ambient temperature before performing these procedures.

### All American (A3FE and C3FE)

1. Park bus on a level surface, applying parking brake, switch engine off, remove ignition key and chock wheels. Disconnect batteries. **Always remove negative cable first.**
2. Open engine hood and disconnect hood stop cable from inside cover assembly by removing a ½ x 24 machine screw and 10-24 hex locknut.



Remove machine screw and locknut

3. Locate the two latches on each side and one latch at the rear and release the latches.
4. Remove cover assembly and move it away from the engine to access the front fan area.

RECALL CAMPAIGN R I O S L



# Starter Cable & Wiring Harness May Contact Engine Fan Hub

# RECALL

- 5 Inspect the starter cable and wiring harness from the right side of the engine, across front of engine to left side of engine for any chaffing, rubbing or damage. If starter cable and wiring harness shows any evidence of damage, contact Blue Bird Recall Administration.

Area of Left side support Bracket, See photos in step 8



Area of Right side support Bracket, See photo in Step 7

- 6 One starter cable and wiring harness support is located on the right side of the engine between the alternator and engine fan.
- 7 Remove and discard the ¼" serrated nut (and flat washer if installed). Install the new ¼" locknut (0145847) and flat washer (01247709) provided. Torque nut to 60-85 in. lbs. Note: two complete threads must extend completely through the nut.



Replace with new locknut and flat washer (Note: new locknut shown)

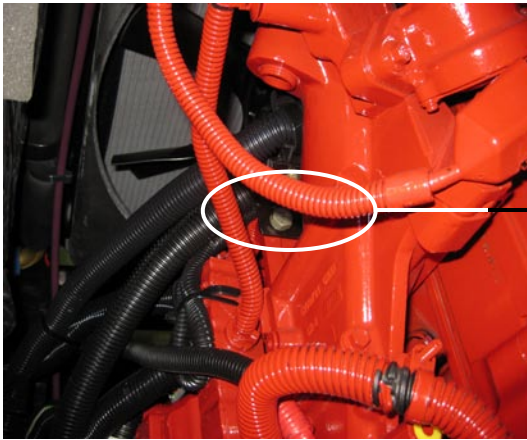
R I O S L  
R E C A L L C A M P A I G N



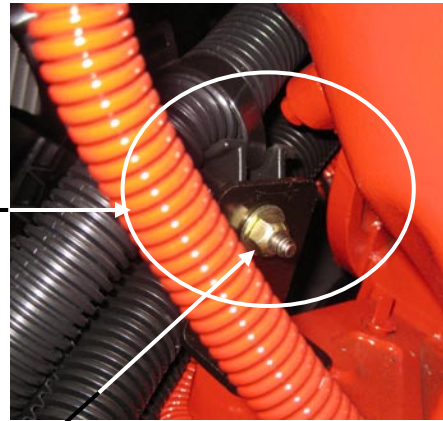
## Starter Cable & Wiring Harness May Contact Engine Fan Hub

# RECALL

8. The second starter cable and wiring harness support is located on the front left side of the engine block.
9. Remove and discard the  $\frac{1}{4}$ " serrated nut (and flat washer if installed). Install the new  $\frac{1}{4}$ " locknut (0145847) and flat washer (01247709) provided. Torque nut to 60-85 in. lbs. Note: two complete threads must extend completely through the nut.



Left Side support



Replace with new locknut and flat washer (Note: New locknut shown)

10. Reinstall the engine cover assembly with the latches. After the latches have been snapped in place, reattach the cable on the inside cover assembly with  $\frac{1}{2}$  x 24 machine screw and 10-24 hex locknut removed in earlier step. Reconnect the batteries.

**Caution:** When reconnecting the batteries, connect the negative last.

11. Place bus back in service.

R I O S L

C A M P A I G N

R E C A L L

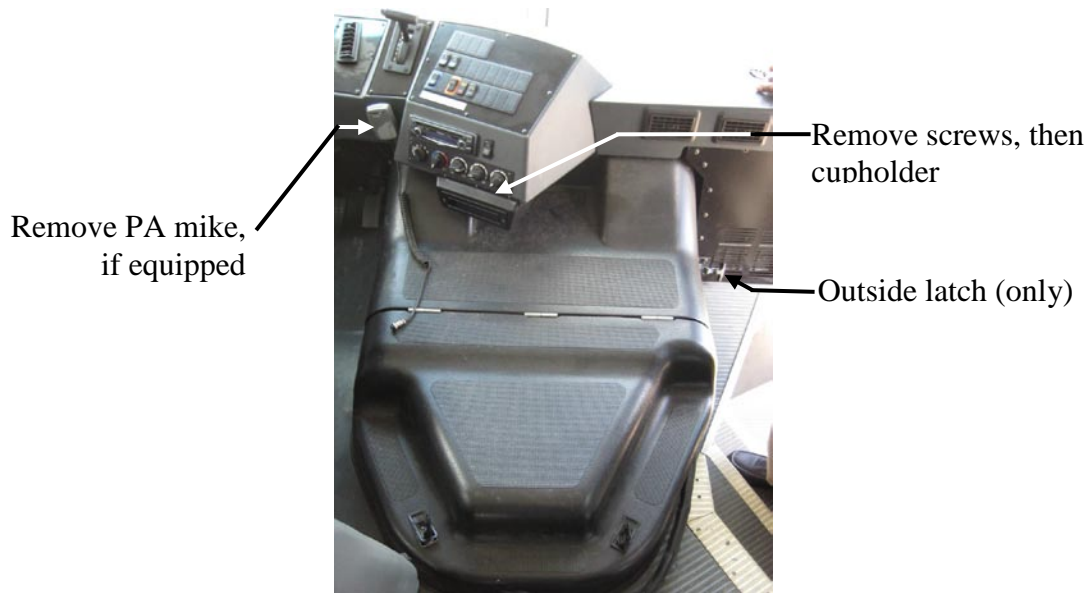


# Starter Cable & Wiring Harness May Contact Engine Fan Hub

# RECALL

## All American (D3FE)

1. Park bus on a level surface, applying parking brake, switch engine off, remove ignition key and chock wheels. Disconnect batteries. **Always remove negative cable first.**
2. To remove engine cover assembly to access front of engine:
  - a. Remove cup holder by removing the Phillip head screws on the front of center console.
  - b. Remove the PA microphone if equipped.
  - c. Pull to release the rubber handle latch anchor located at the right hand lower front wall of the engine cover assembly.
  - d. Open hood and locate the four latches on the inside of hood. One is located on the driver's side toward the front, one on each side and one at rear center. Release these latches and remove engine cover assembly for access to front of engine.



3. Inspect the starter cable and wiring harness from the right side of engine, across front of engine to left side of engine for any chaffing, rubbing or damage. If starter cable and wiring harness shows any evidence of damage, contact Blue Bird Recall Administration.

R I O S L

R E C A L L C A M P A I G N



# Starter Cable & Wiring Harness May Contact Engine Fan Hub

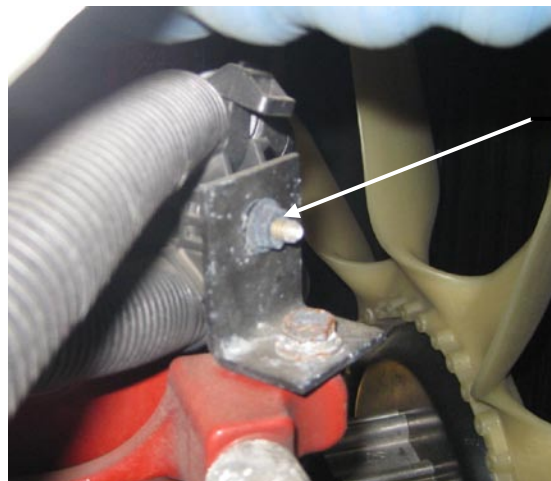
# RECALL

Area of Left Side Support Bracket, see photos in step 6



Area of Right Side Support Bracket, see photo in step 5

- 4 One starter cable and wiring harness support is located on the right side of the engine between the alternator and engine fan.
5. Remove and discard the 1/4" serrated nut (and flat washer if installed). Install the new 1/4" locknut (0145847) and flat washer (01247709) provided. Torque nut to 60-85 in. lbs. Note: two complete threads must extend completely through the nut.



Replace serrated nut (shown) with new locknut and flat washer

6. The second starter cable and wiring harness support is located on the front left side of the engine block.

R I O S L

R E C A L L C A M P A I G N

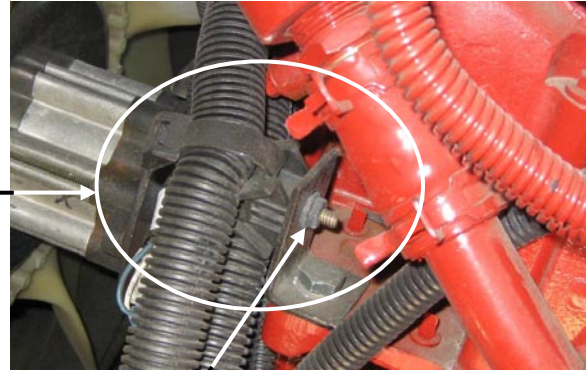


# Starter Cable & Wiring Harness May Contact Engine Fan Hub

# RECALL



Left Side Support



Replace serrated nut (shown) with locknut and flat washer

- 7 Remove and discard the 1/4" serrated nut (and flat washer if installed). Install the new 1/4" locknut (0145847) and flat washer (01247709) provided. Torque nut to 60-85 in. lbs. Note: two complete threads must extend completely through the nut.
  8. Reinstall the engine cover assembly by reversing the steps above. Reconnect the batteries.
- Caution:** *When reconnecting the batteries, connect the negative cable last.*
9. Place bus back in service.

## PARTS LIST

PART NUMBER	DESCRIPTION	QUANTITY
01455947	Nut, Hex Head, 1/4 -20, Locking, Nylon Insert	2
01247709	Washer, Flat, 17/64 ID X 5/8 OD	2

R I O S L

R E C A L L C A M P A I G N