



Service Bulletin

American Honda Motor Co., Inc.

NON-COMPLIANCE RECALL

2010 VT1300CR/CRA and VT1300CT Safety Certification Label Update

Honda Motor Co., Ltd. is conducting a Non-Compliance Recall to update the GAWR (Gross Axle Weight Rating) specification on the Safety Certification Label on certain 2010 VT1300CR/CRA and VT1300CT motorcycles.

The Safety Certification Label is located on the left front frame downtube and contains information that includes the GAWR. The label lists incorrect GAWR values for the front and rear tires.

A correction sticker with the correct values is now available to cover the incorrect GAWR information.

CUSTOMER INFORMATION

American Honda is sending a letter to owners of all affected 2010 VT1300CR/CRA and VT1300CT models informing them of the incorrect GAWR specification. The letter includes the appropriate correction sticker for their motorcycle and instructions for its correct application to the Safety Certification Label by the customer. The customer has the option to have a Honda motorcycle dealer apply the correction sticker if they would prefer not to do it themselves. They will be instructed to call their dealer to make an appointment to have the Recall performed. For your reference, a copy of the Customer Letter is reproduced on page 4 of this Service Bulletin.

AFFECTED UNITS

VT1300CR (A-type)

JH2SC660*AK000006 thru JH2SC660*AK001855

VT1300CR (AC-type)

JH2SC661*AK000001 thru JH2SC661*AK000096

VT1300CRA (A-type)

JH2SC664*AK000011 thru JH2SC664*AK000240

VT1300CT (A-type)

JH2SC667*AK000003 thru JH2SC667*AK000946

VT1300CT (AC-type)

JH2SC668*AK000003 thru JH2SC668*AK000066

(*) denotes check digit

DEALER INVENTORY

Do not sell any un-repaired units.

Any affected units in your inventory must be repaired with the appropriate correction sticker before delivery to the customer. Refer to your Dealer Responsibility Report for affected new units in your inventory. Then proceed with the PARTS INFORMATION and the REPAIR PROCEDURE section of this Service Bulletin.

REPAIR VERIFICATION

Before you begin the repair procedure, check if the recall has been performed on the unit.

See the IDENTIFICATION section of this Service Bulletin for more details.

- If there is a correction sticker applied to the Safety Certification Label:
 - No further action is necessary
- If there is no correction sticker on the Safety Certification Label:
 - You must proceed with the REPAIR PROCEDURE section of this Service Bulletin.

If you have any questions about repair verification, please contact TechLine at: (800) 421-1900, option 9.

REPAIR PROCEDURE

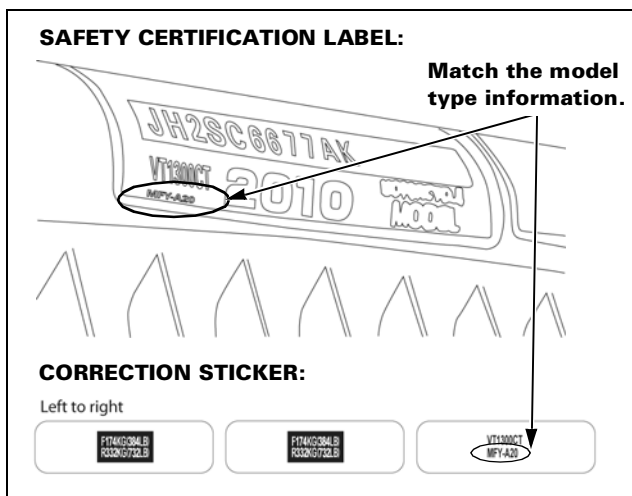
1. Locate and clean the Safety Certification Label with soap and water. Wipe it dry with a clean towel.



2. Match the motorcycle with the appropriate correction sticker by noting the model name and model type in the lower left corner of the Safety Certification Label.

There are five different correction stickers for the various models and types affected by this bulletin. The correction sticker is identified by model name and model type in the right panel as shown in the illustration at the top of the next column.

NOTE: It is important that the model type information is an exact match between the correction sticker and motorcycle.



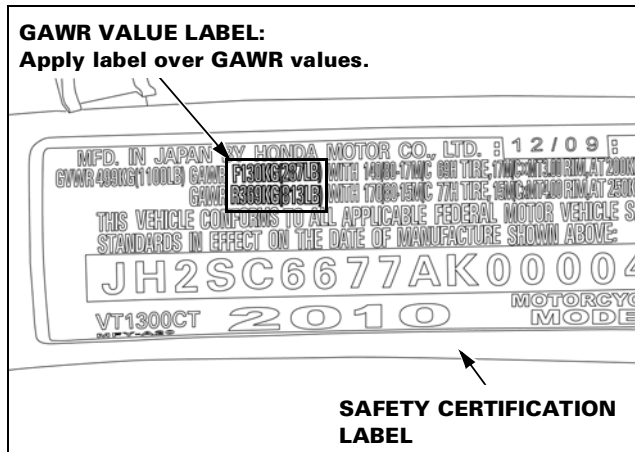
Model Type to Correction Sticker Reference

Model Name	Type	Safety Label, Model Type	Correction Sticker Values
VT1300CR	A	MFY-A00	F177KG(390LB) R314KG(692LB)
	AC	MFY-L00	F177KG(390LB) R315KG(694LB)
VT1300CRA (ABS)	A	MFY-A10	F178KG(392LB) R320KG(705LB)
VT1300CT	A	MFY-A20	F174KG(384LB) R332KG(732LB)
	AC	MFY-L20	F174KG(384LB) R333KG(734LB)

3. Peel one GAWR value label from the correction sticker sheet and apply it over the original GAWR values (in bold) on the Safety Certification Label, as shown.

Once the label is in position, use finger pressure to firmly affix it.

NOTE: A second label is included on the correction sticker if you have trouble applying the first one.



IDENTIFICATION

A repaired Safety Certification Label can be identified by running a finger over the GAWR values and feeling for a correction sticker.



WARRANTY INFORMATION

This Non-Compliance Recall has no expiration date. Normal claim submission requirements apply.

After completing the Service Bulletin Repair Procedure, submit one warranty claim per unit with the following information:

WARRANTY CLAIM TEMPLATE:

Template: R41A

Flat Rate Time: 0.2 hrs

PARTS INFORMATION

An initial supply of correction stickers has been automatically sent to your dealership.

For additional stickers please contact Tech-Line at (800) 421-1900, option 9.

TEXT OF CUSTOMER LETTER

August 2010

IMPORTANT NON-COMPLIANCE RECALL NOTICE

Dear VT1300 Owner:

This notice is sent to you in accordance with the requirements of the National Traffic and Motor Vehicle Safety Act.

What is the reason for this notice?

Honda has decided that certain 2010 model year VT1300CR/CRA/CT motorcycles fail to conform to 49 CFR Part 567, Certification. The safety certification label on these motorcycles specifies incorrect Gross Axle Weight Rating (GAWR) values. If the motorcycle is loaded according to the incorrect values, the rear axle of the motorcycle will be overloaded, increasing the risk of a crash. The Gross Vehicle Weight Rating (GVWR) value specified, however, is correct.

What should you do?

Please find enclosed a correction sticker and an installation instruction card. Follow the installation instructions and install one correction sticker over the old GAWR values as shown. If you prefer that a dealer install the sticker for you, please call your authorized Honda motorcycle dealer and make an appointment to have the sticker installed, free of charge. Please provide the dealer with the enclosed sticker.

Who to contact if you experience problems?

If you are not satisfied with the service you receive from your Honda dealer, you may write to:

American Honda Motor Co., Inc.
Motorcycle Customer Support
Mail Stop 100-4C-7B
1919 Torrance Blvd.
Torrance, CA 90501-2746
(866) 784-1870

If you believe that American Honda or the dealer has failed or is unable to remedy the non-compliance in your vehicle, without charge, within a reasonable period of time (60 days from the date you first contact the dealer for a repair appointment), you may submit a complaint to:

Administrator
National Highway Traffic Safety Administration
1200 New Jersey Ave., SE
Washington, DC 20590

Or call the toll-free Vehicle Safety Hotline at 1-888-327-4236 [TTY (800) 424-9153], or go to [http:// www.safercar.gov](http://www.safercar.gov)

What to do if you feel this notice is in error.

Our records show that you are the current owner of a 2010 VT1300CR/CRA/CT involved in this campaign. If this is not the case, or the name/address information is not correct, please fill out and return the enclosed, postage-paid *Information Change Card*. We will then update our records.

If you have questions.

If you have any questions about this notice, or need assistance with locating a Honda motorcycle dealer, please call Honda Motorcycle Customer Support at (866) 784-1870.

We apologize for any inconvenience this campaign may cause you.

Sincerely,

**American Honda Motor Co., Inc.
Motorcycle Division**