



THIS DOCUMENT AND THE CONTENTS DISCUSSED HEREIN ARE THE CONFIDENTIAL AND PROPRIETARY INFORMATION OF NEW FLYER INDUSTRIES CANADA ULC AND NEW FLYER OF AMERICA INC. AND ARE DISCLOSED BY NEW FLYER IN CONFIDENCE. THIS DOCUMENT AND THE CONTENTS HEREIN ARE NOT TO BE DISCLOSED BY THE INTENDED RECIPIENT WITHOUT THE PRIOR WRITTEN AUTHORIZATION OF NEW FLYER. ANY UNAUTHORIZED DISCLOSURE, REPRODUCTION OR OTHER DISTRIBUTION OF THIS DOCUMENT OR INFORMATION IS STRICTLY PROHIBITED AND MAY RESULT IN ACTION BEING TAKEN AGAINST THE PARTY MAKING THE UNAUTHORIZED DISCLOSURE. THIS DOCUMENT AND ALL COPIES HEREOF MUST BE RETURNED TO NEW FLYER UPON REQUEST.

**INSTRUCTION TO SERVICE ITS: 4367**

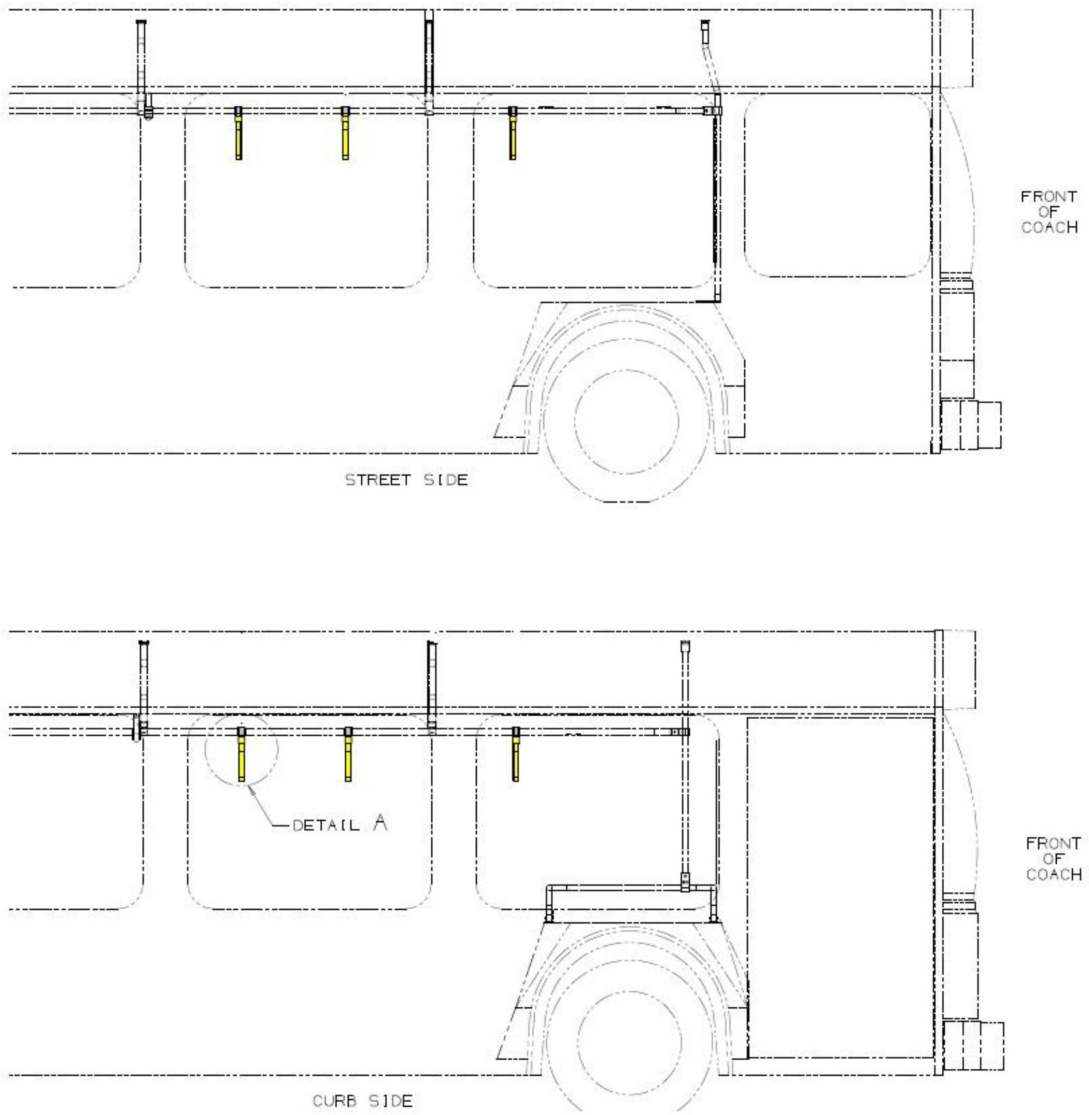
SECTION: 526  Seating & Stanchions	MODEL: <input type="checkbox"/> 30FT <input type="checkbox"/> 35FT <input checked="" type="checkbox"/> 40FT <input checked="" type="checkbox"/> 60FT  <input checked="" type="checkbox"/> DSL <input type="checkbox"/> CNG <input type="checkbox"/> LNG <input checked="" type="checkbox"/> ELEC	TYPE: <input type="checkbox"/> HIGH FLOOR  <input checked="" type="checkbox"/> LOW FLOOR	WRITTEN BY: Jeff Kosheluk
---	---	---	------------------------------

OBJECTIVE/SUBJECT:

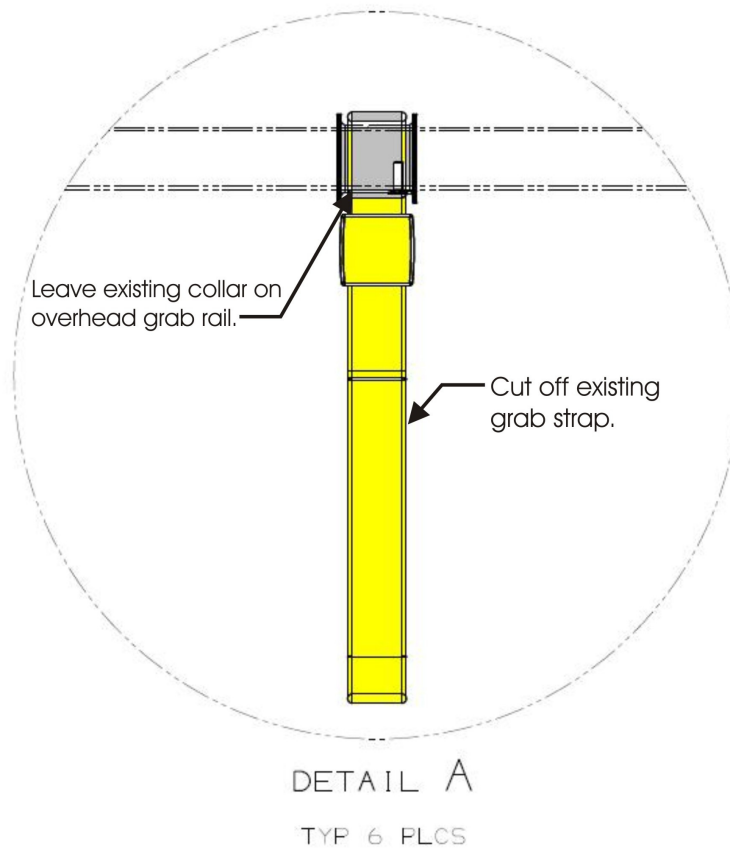
R & R current grab straps with new upgraded grab straps (NF PN: 057991) with metal clasp.

PROCEDURE:

1. Turn the main battery disconnect switch to the "OFF" position.
2. Locate all grab straps on the front section of the coach. Start with the first grab strap. For steps 2 & 3, **Refer to Figure 1.**
3. Cut off grab strap leaving the existing collar around the overhead stanchion. **Note: Cut off the grab strap above the clasp only cutting on the one side so that the strap comes off as one piece.**



**FIGURE 1: LOCATION OF GRAB STRAPS.**



**FIGURE 1A: CUT OFF THE EXISTING STRAP AS SHOWN BUT LEAVE ON THE COLLAR AT THE OVERHEAD STANCHION.**

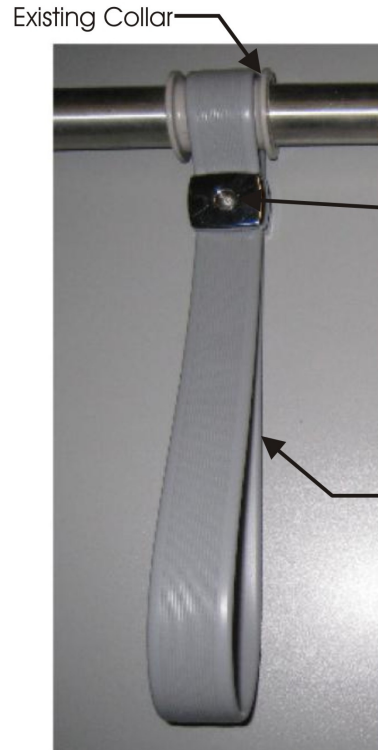
4. Install the new grab strap (**NF PN: 057991**) on the existing collar. Before installing the 5/8" L Phillips screw inside of the metal clasp, apply 1 to 2 drops of Loctite – 638 (**NF PN: 392127**) approximately 1/8" from end of screw. Install screw into metal clasp and grab strap to secure in place over collar. Tighten screw in place and **torque screw to 24 IN/LBS. Refer to Figure 2.**



Grabstrap comparison



Existing Grabstrap with plastic clip



New Proposed Grabstrap with metal clip

**FIGURE 2: COMPARISON SHOWING THE EXISTING GRAB STRAP AND THE NEW GRAB STRAP WITH METAL CLIP (NF PN: 057991).**

5. Repeat 3 & 4 to replace all remaining grab straps.
6. Remove all tools and debris from work area to return coach to service condition.
7. Turn the main battery disconnect switch to the "ON" position.



<b>LABOUR ESTIMATE</b>				
	Operation	Men	Hours	Labour Time M X HR
1	R & R grab straps with the new grab straps.	1	1.0	1.0

<b>PARTS REQUIRED</b>					
Item	Part Number	Description	Qty. per Coach	Units	Notes
1	057991	Strap – Assist	6	EA	
2	392127	Loctite – 638 (Green)	0.01	EA	



THIS DOCUMENT AND THE CONTENTS DISCUSSED HEREIN ARE THE CONFIDENTIAL AND PROPRIETARY INFORMATION OF NEW FLYER INDUSTRIES CANADA ULC AND NEW FLYER OF AMERICA INC. AND ARE DISCLOSED BY NEW FLYER IN CONFIDENCE. THIS DOCUMENT AND THE CONTENTS HEREIN ARE NOT TO BE DISCLOSED BY THE INTENDED RECIPIENT WITHOUT THE PRIOR WRITTEN AUTHORIZATION OF NEW FLYER. ANY UNAUTHORIZED DISCLOSURE, REPRODUCTION OR OTHER DISTRIBUTION OF THIS DOCUMENT OR INFORMATION IS STRICTLY PROHIBITED AND MAY RESULT IN ACTION BEING TAKEN AGAINST THE PARTY MAKING THE UNAUTHORIZED DISCLOSURE. THIS DOCUMENT AND ALL COPIES HEREOF MUST BE RETURNED TO NEW FLYER UPON REQUEST.

**INSTRUCTION TO SERVICE ITS: 4393**

SECTION: 526  Seating & Stanchions	MODEL: <input type="checkbox"/> 30FT <input type="checkbox"/> 35FT <input checked="" type="checkbox"/> 40FT <input checked="" type="checkbox"/> 60FT  <input checked="" type="checkbox"/> DSL <input type="checkbox"/> CNG <input type="checkbox"/> LNG <input checked="" type="checkbox"/> ELEC	TYPE: <input type="checkbox"/> HIGH FLOOR  <input checked="" type="checkbox"/> LOW FLOOR	WRITTEN BY: Jeff Kosheluk
--	---	---	------------------------------

OBJECTIVE/SUBJECT:

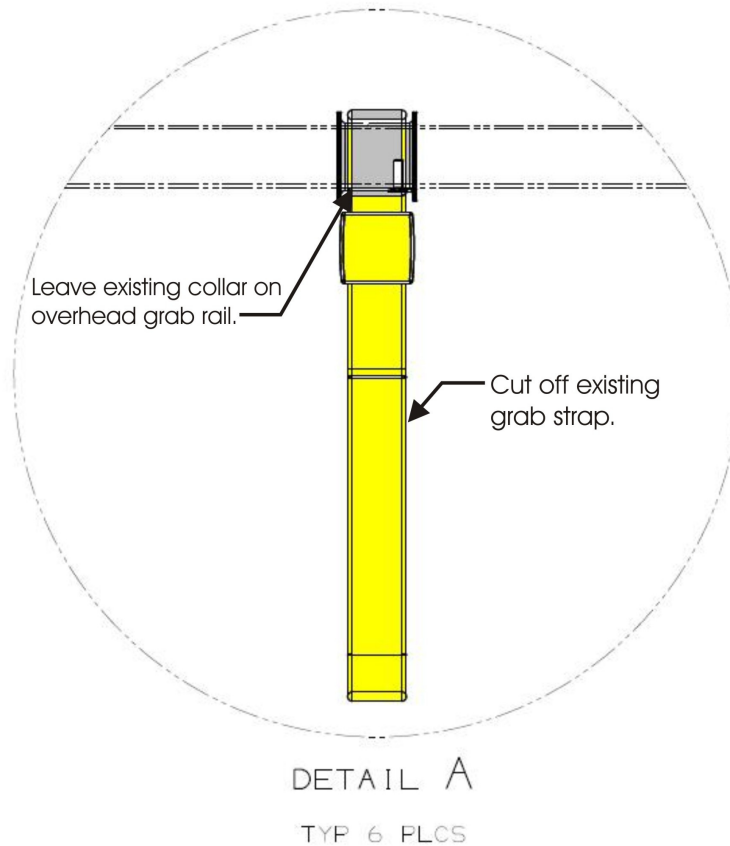
R & R current grab straps with new upgraded grab straps (NF PN: 057991) with metal clasp.

PROCEDURE:

1. Turn the main battery disconnect switch to the "OFF" position.
2. Locate all grab straps on the front section of the coach. Start with the first grab strap. For steps 2 & 3, **Refer to Figure 1.**
3. Cut off grab strap leaving the existing collar around the overhead stanchion. **Note: Cut off the grab strap above the clasp only cutting on the one side so that the strap comes off as one piece.**



**FIGURE 1:** LOCATION OF GRAB STRAPS.



**FIGURE 1A:** CUT OFF THE EXISTING STRAP AS SHOWN BUT LEAVE ON THE COLLAR AT THE OVERHEAD STANCHION.

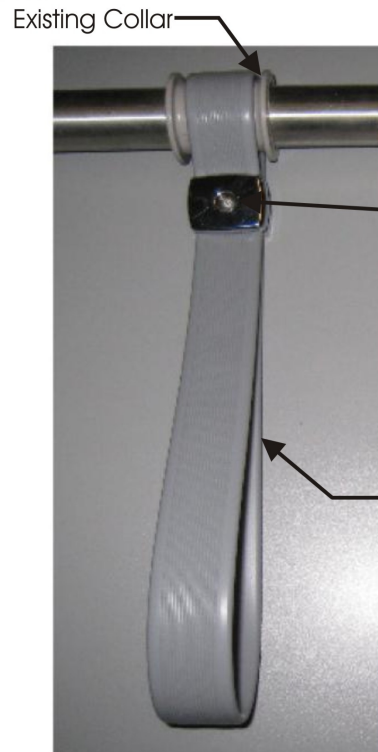
4. Install the new grab strap (**NF PN: 057991**) on the existing collar. Before installing the 5/8" L Phillips screw inside of the metal clasp, apply 1 to 2 drops of Loctite – 638 (**NF PN: 392127**) approximately 1/8" from end of screw. Install screw into metal clasp and grab strap to secure in place over collar. Tighten screw in place and **torque screw to 24 IN/LBS**. Refer to **Figure 2**.



Grabstrap comparison



Existing Grabstrap with plastic clip



New Proposed Grabstrap with metal clip

**FIGURE 2: COMPARISON SHOWING THE EXISTING GRAB STRAP AND THE NEW GRAB STRAP WITH METAL CLIP (NF PN: 057991).**

5. Repeat 3 & 4 to replace all remaining grab straps.
6. Remove all tools and debris from work area to return coach to service condition.
7. Turn the main battery disconnect switch to the "ON" position.



<b>LABOUR ESTIMATE</b>				
	Operation	Men	Hours	Labour Time M X HR
1	R & R grab straps with the new grab straps.	1	2.0	2.0

<b>PARTS REQUIRED</b>					
Item	Part Number	Description	Qty. per Coach	Units	Notes
1	057991	Strap – Assist	28	EA	
2	392127	Loctite – 638 (Green)	0.01	EA	



THIS DOCUMENT AND THE CONTENTS DISCUSSED HEREIN ARE THE CONFIDENTIAL AND PROPRIETARY INFORMATION OF NEW FLYER INDUSTRIES CANADA ULC AND NEW FLYER OF AMERICA INC. AND ARE DISCLOSED BY NEW FLYER IN CONFIDENCE. THIS DOCUMENT AND THE CONTENTS HEREIN ARE NOT TO BE DISCLOSED BY THE INTENDED RECIPIENT WITHOUT THE PRIOR WRITTEN AUTHORIZATION OF NEW FLYER. ANY UNAUTHORIZED DISCLOSURE, REPRODUCTION OR OTHER DISTRIBUTION OF THIS DOCUMENT OR INFORMATION IS STRICTLY PROHIBITED AND MAY RESULT IN ACTION BEING TAKEN AGAINST THE PARTY MAKING THE UNAUTHORIZED DISCLOSURE. THIS DOCUMENT AND ALL COPIES HEREOF MUST BE RETURNED TO NEW FLYER UPON REQUEST.

# INSTRUCTION TO SERVICE ITS: 4395

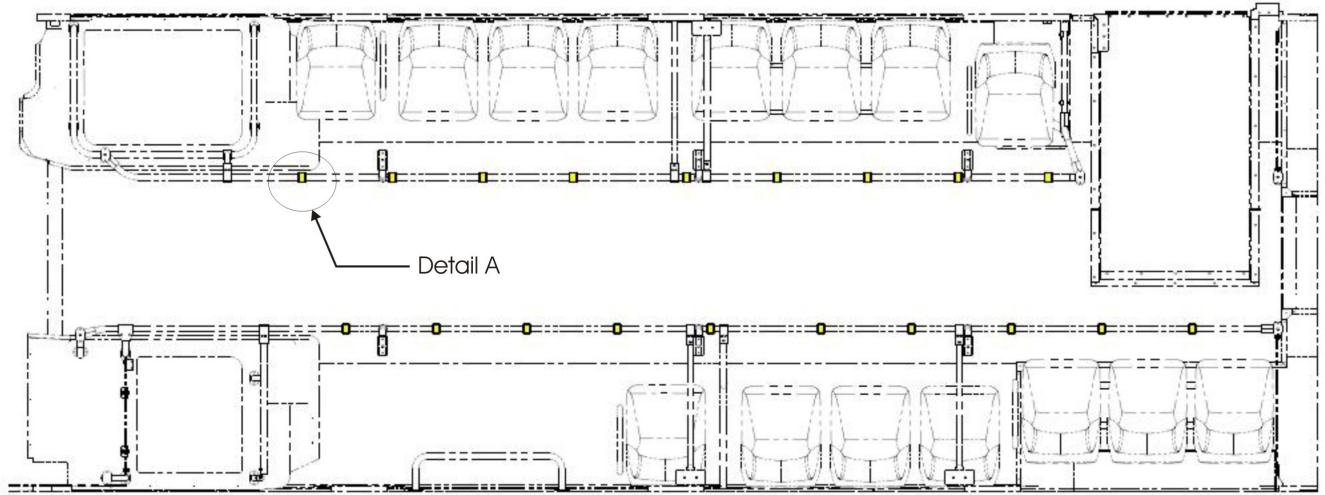
SECTION: 526  Seating & Stanchions	MODEL: <input type="checkbox"/> 30FT <input type="checkbox"/> 35FT <input checked="" type="checkbox"/> 40FT <input checked="" type="checkbox"/> 60FT  <input checked="" type="checkbox"/> DSL <input type="checkbox"/> CNG <input type="checkbox"/> LNG <input checked="" type="checkbox"/> ELEC	TYPE: <input type="checkbox"/> HIGH FLOOR  <input checked="" type="checkbox"/> LOW FLOOR	WRITTEN BY: Jeff Kosheluk
---	---	---	------------------------------

OBJECTIVE/SUBJECT:

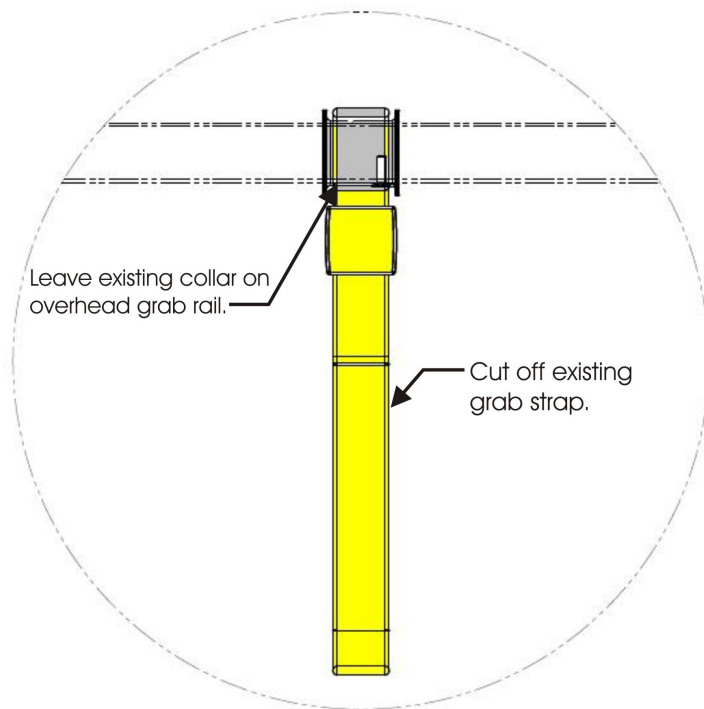
R & R current grab straps with new upgraded grab straps (NF PN: 057991) with metal clasp.

PROCEDURE:

1. Turn the main battery disconnect switch to the "OFF" position.
2. Locate all grab straps on the front section of the coach. Start with the first grab strap. For steps 2 & 3, **Refer to Figure 1.**
3. Cut off grab strap leaving the existing collar around the overhead stanchion. **Note: Cut off the grab strap above the clasp only cutting on the one side so that the strap comes off as one piece.**



**FIGURE 1: LOCATION OF GRAB STRAPS.**



DETAIL A

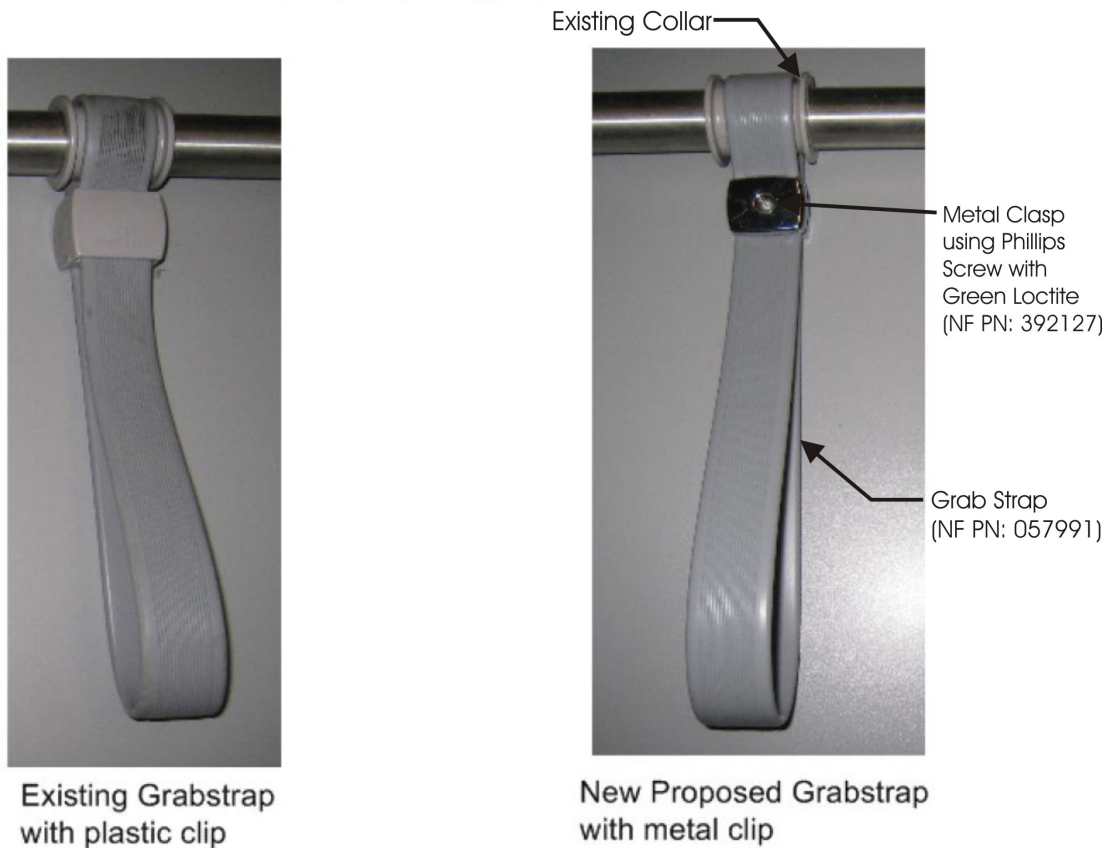
TYP 6 PLCS

**FIGURE 1A: CUT OFF THE EXISTING STRAP AS SHOWN BUT LEAVE ON THE COLLAR AT THE OVERHEAD STANCHION.**



4. Install the new grab strap (**NF PN: 057991**) on the existing collar. Before installing the 5/8" L Phillips screw inside of the metal clasp, apply 1 to 2 drops of Loctite – 638 (**NF PN: 392127**) approximately 1/8" from end of screw. Install screw into metal clasp and grab strap to secure in place over collar. Tighten screw in place and **torque screw to 24 IN/LBS**. Refer to **Figure 2**.

Grabstrap comparison



**FIGURE 2: COMPARISON SHOWING THE EXISTING GRAB STRAP AND THE NEW GRAB STRAP WITH METAL CLIP (NF PN: 057991).**

5. Repeat 3 & 4 to replace all remaining grab straps.
6. Remove all tools and debris from work area to return coach to service condition.
7. Turn the main battery disconnect switch to the "ON" position.



<b>LABOUR ESTIMATE</b>				
	Operation	Men	Hours	Labour Time M X HR
1	R & R grab straps with the new grab straps.	1	1.5	1.5

<b>PARTS REQUIRED</b>					
Item	Part Number	Description	Qty. per Coach	Units	Notes
1	057991	Strap – Assist	19	EA	
2	392127	Loctite – 638 (Green)	0.01	EA	



THIS DOCUMENT AND THE CONTENTS DISCUSSED HEREIN ARE THE CONFIDENTIAL AND PROPRIETARY INFORMATION OF NEW FLYER INDUSTRIES CANADA ULC AND NEW FLYER OF AMERICA INC. AND ARE DISCLOSED BY NEW FLYER IN CONFIDENCE. THIS DOCUMENT AND THE CONTENTS HEREIN ARE NOT TO BE DISCLOSED BY THE INTENDED RECIPIENT WITHOUT THE PRIOR WRITTEN AUTHORIZATION OF NEW FLYER. ANY UNAUTHORIZED DISCLOSURE, REPRODUCTION OR OTHER DISTRIBUTION OF THIS DOCUMENT OR INFORMATION IS STRICTLY PROHIBITED AND MAY RESULT IN ACTION BEING TAKEN AGAINST THE PARTY MAKING THE UNAUTHORIZED DISCLOSURE. THIS DOCUMENT AND ALL COPIES HEREOF MUST BE RETURNED TO NEW FLYER UPON REQUEST.

**INSTRUCTION TO SERVICE ITS: 4397**

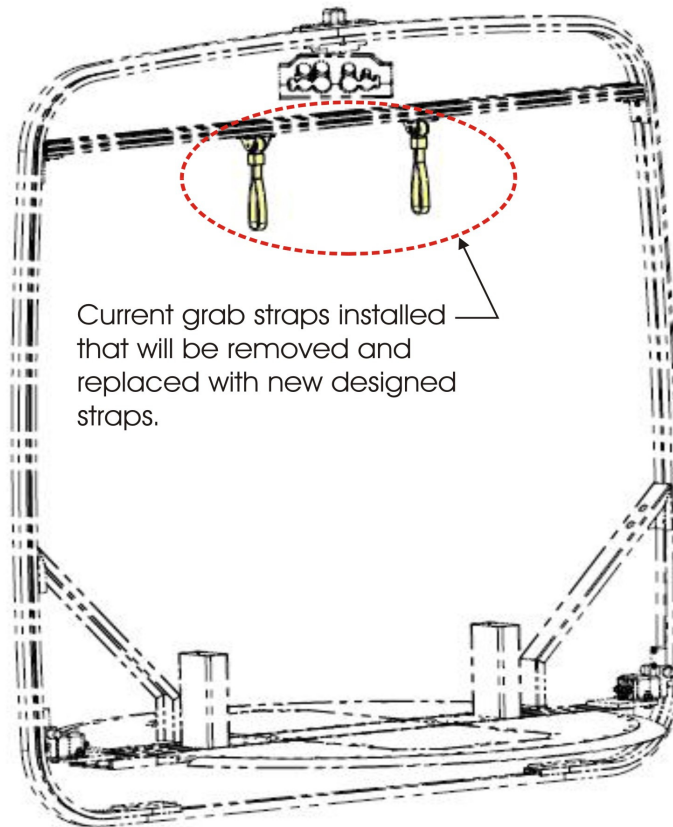
SECTION: 526  Seating & Stanchions	MODEL: <input type="checkbox"/> 30FT <input type="checkbox"/> 35FT <input type="checkbox"/> 40FT <input checked="" type="checkbox"/> 60FT  <input checked="" type="checkbox"/> DSL <input type="checkbox"/> CNG <input type="checkbox"/> LNG <input checked="" type="checkbox"/> ELEC	TYPE: <input type="checkbox"/> HIGH FLOOR  <input checked="" type="checkbox"/> LOW FLOOR	WRITTEN BY: Jeff Kosheluk
--	--	---	------------------------------

OBJECTIVE/SUBJECT:

Remove and replace with new strap assists on center hoop at the ATG joint.

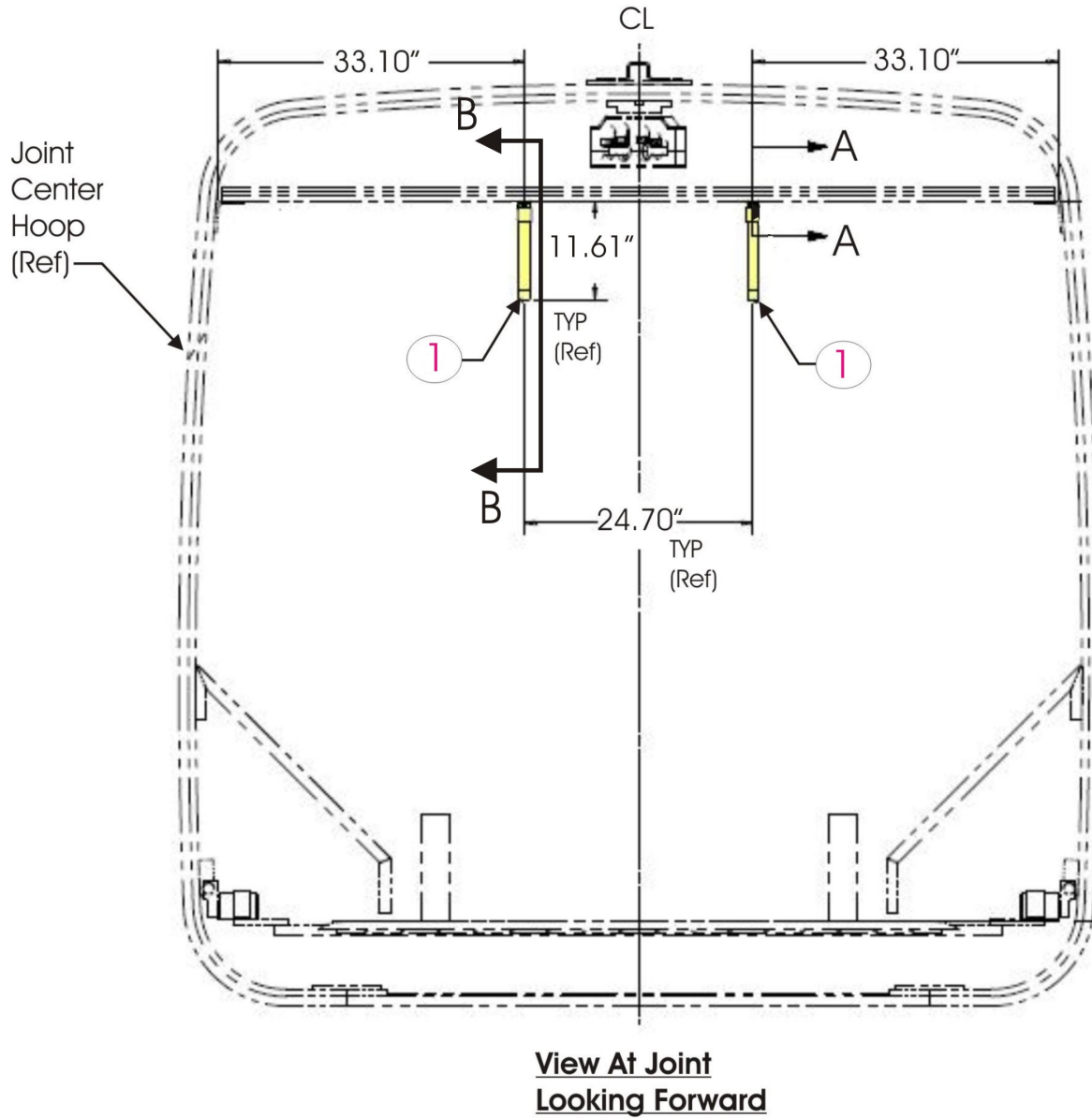
PROCEDURE:

1. Turn the main battery disconnect switch to the "OFF" position.
2. On the interior of the coach, locate the strap assists at the center hoop on the artic joint.
3. Remove the strap assists and mounting hardware from the center hoop. Discard the strap and set aside the original mounting hardware to use later. For steps 3 – 6, **Refer to Figure 1 – 3.**
4. Proceed to install the new strap assists. Install mating plate and strap assist (NF PN: 350303) using M8 bolt & supplied groove nut in ATG center hoop. Apply 1 to 2 drops of Loctite-638 (**NF PN: 392127**) to threads of M8 bolt before installation.
5. Torque M8 bolts to 14.7 FT – LBS wet for both strap assists.
6. Before installing screw into grab strap, add 1 to 2 drops of Loctite-638 to the threads. Install screw and torque to 24 IN/LBS.
7. Repeat step 4 – 6 to install the remaining strap.
8. Remove all tools and debris from work area to return coach to service condition.
9. Turn the main battery disconnect switch to the "ON" position.

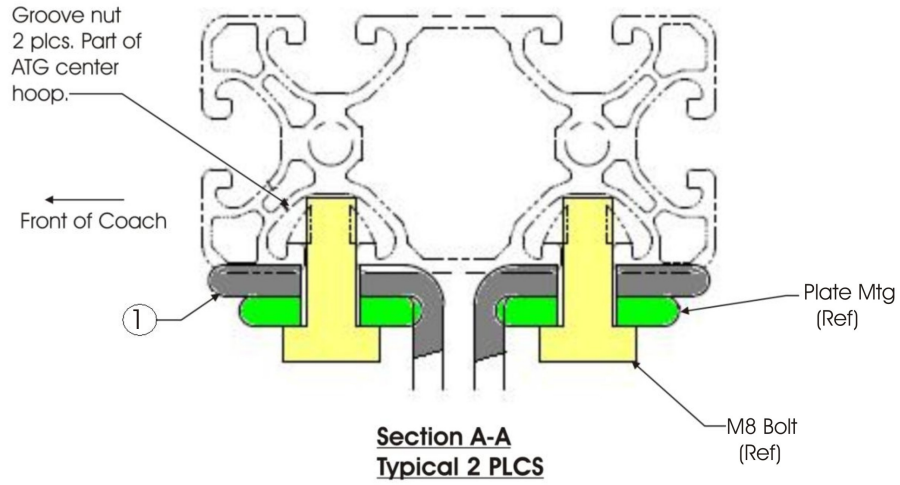


Current grab straps installed that will be removed and replaced with new designed straps.

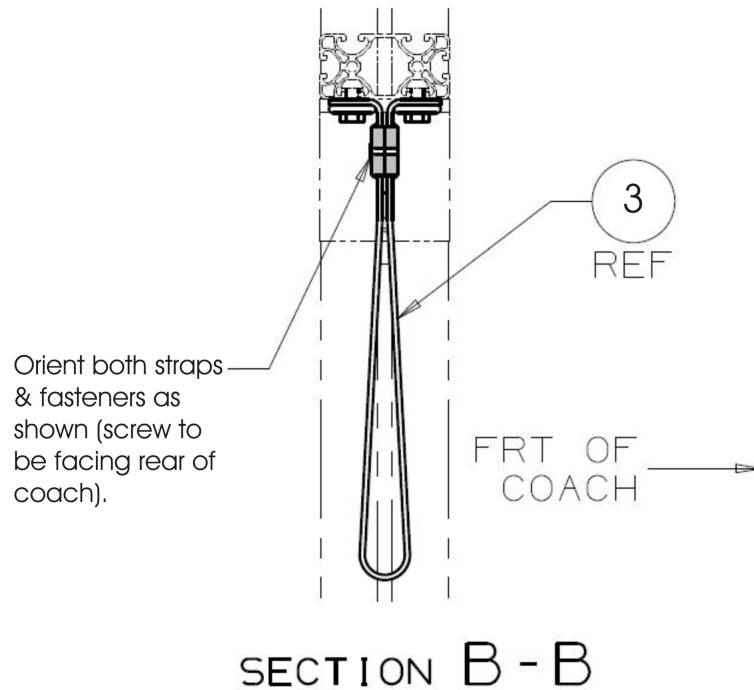
**FIGURE 1:** SHOWS THE CURRENT STRAPS INSTALLED AT THE CENTER HOOP AT THE ATG JOINT. THESE WILL BE REMOVED AND REPLACED WITH NEW DESIGNED GRAB STRAP.



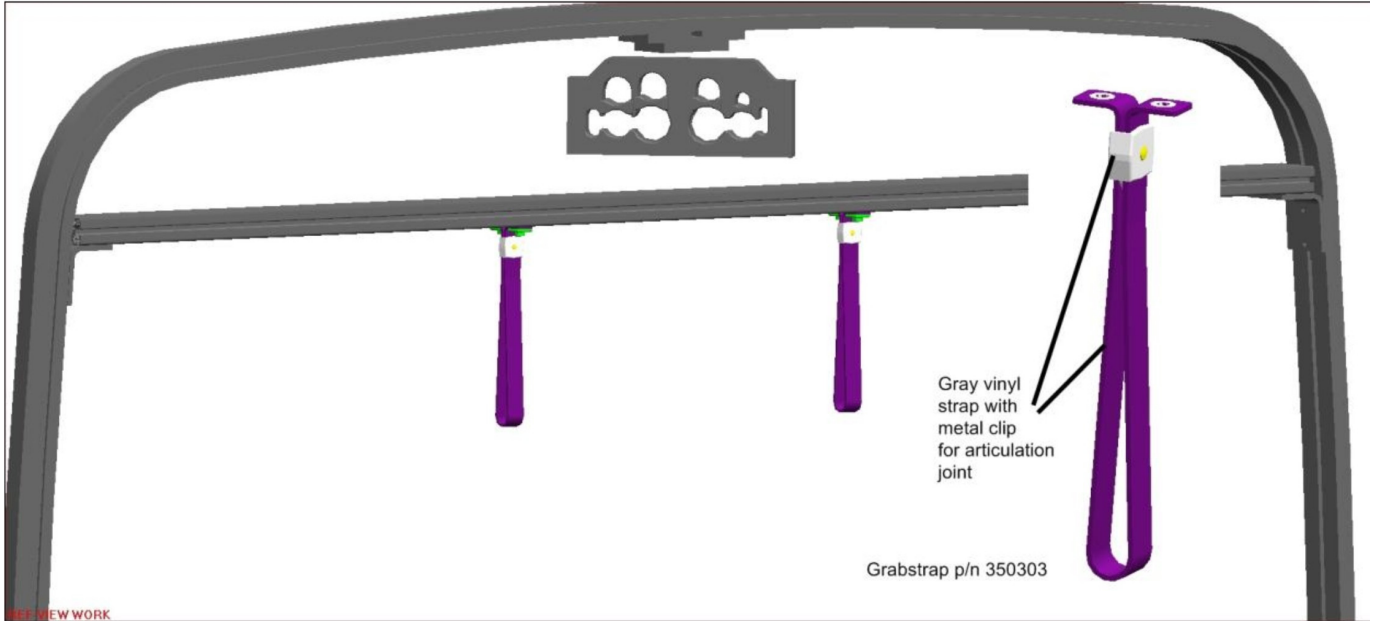
**FIGURE 2:** SHOWN VIEW OF THE NEW STRAP-ASSIST (NF PN: 350303) INSTALLED ON THE CENTER HOOP AT THE ATG JOINT. SECTION A VIEW WILL SHOW INSTALLATION VIEW OF THE HARDWARE.



**FIGURE 2A:** SHOWN TOP VIEW OF THE STRAP-ASSIST ATTACHED WITH MOUNTING HARDWARE AT THE CENTER HOOP ON THE ATG JOINT.



**FIGURE 2B:** INSTALL GRAB STRAP AS STATED WITH SCREW TO BE FACING REAR OF COACH.



**FIGURE 3:** SHOWN VIEW OF THE NEW STRAP-ASSIST  
INSTALLED ON THE CENTER HOOP AT THE ATG JOINT.



<b>LABOUR ESTIMATE</b>				
	Operation	Men	Hours	Labour Time M X HR
1	Remove and replace with new style strap-assist on the center hoop at the ATG joint.	1	0.5	0.5

<b>PARTS REQUIRED</b>					
Item	Part Number	Description	Qty. per Coach	Units	Notes
1	350303	Strap - Assist	2	EA	
2	392127	Loctite – 638	0.01	EA	



THIS DOCUMENT AND THE CONTENTS DISCUSSED HEREIN ARE THE CONFIDENTIAL AND PROPRIETARY INFORMATION OF NEW FLYER INDUSTRIES CANADA ULC AND NEW FLYER OF AMERICA INC. AND ARE DISCLOSED BY NEW FLYER IN CONFIDENCE. THIS DOCUMENT AND THE CONTENTS HEREIN ARE NOT TO BE DISCLOSED BY THE INTENDED RECIPIENT WITHOUT THE PRIOR WRITTEN AUTHORIZATION OF NEW FLYER. ANY UNAUTHORIZED DISCLOSURE, REPRODUCTION OR OTHER DISTRIBUTION OF THIS DOCUMENT OR INFORMATION IS STRICTLY PROHIBITED AND MAY RESULT IN ACTION BEING TAKEN AGAINST THE PARTY MAKING THE UNAUTHORIZED DISCLOSURE. THIS DOCUMENT AND ALL COPIES HEREOF MUST BE RETURNED TO NEW FLYER UPON REQUEST.

# INSTRUCTION TO SERVICE ITS: 4400

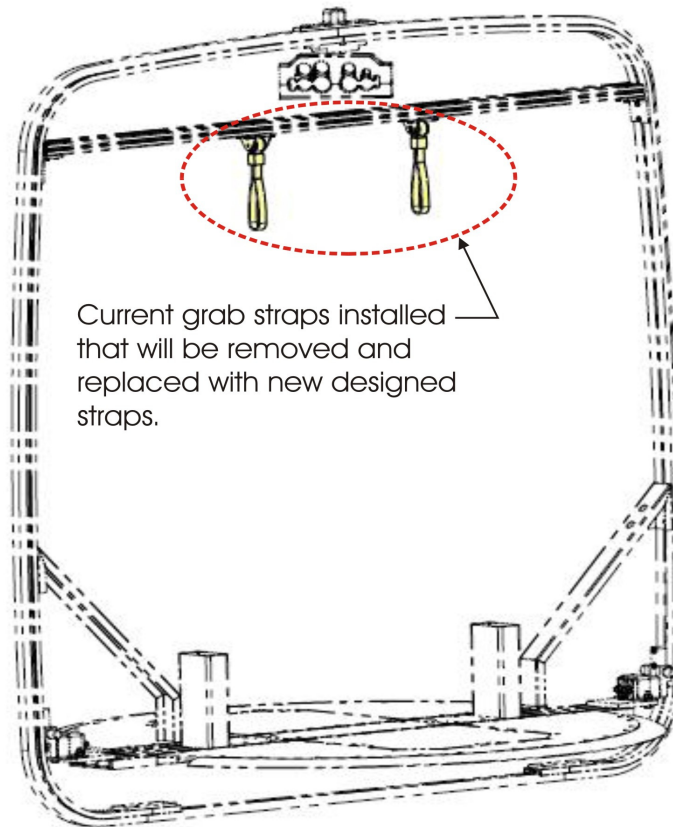
SECTION: 526  Seating & Stanchions	MODEL: <input type="checkbox"/> 30FT <input type="checkbox"/> 35FT <input type="checkbox"/> 40FT <input checked="" type="checkbox"/> 60FT  <input checked="" type="checkbox"/> DSL <input type="checkbox"/> CNG <input type="checkbox"/> LNG <input checked="" type="checkbox"/> ELEC	TYPE: <input type="checkbox"/> HIGH FLOOR  <input checked="" type="checkbox"/> LOW FLOOR	WRITTEN BY: Jeff Kosheluk
--	--	---	------------------------------

**OBJECTIVE/SUBJECT:**

Remove and replace with new strap assists on center hoop at the ATG joint.

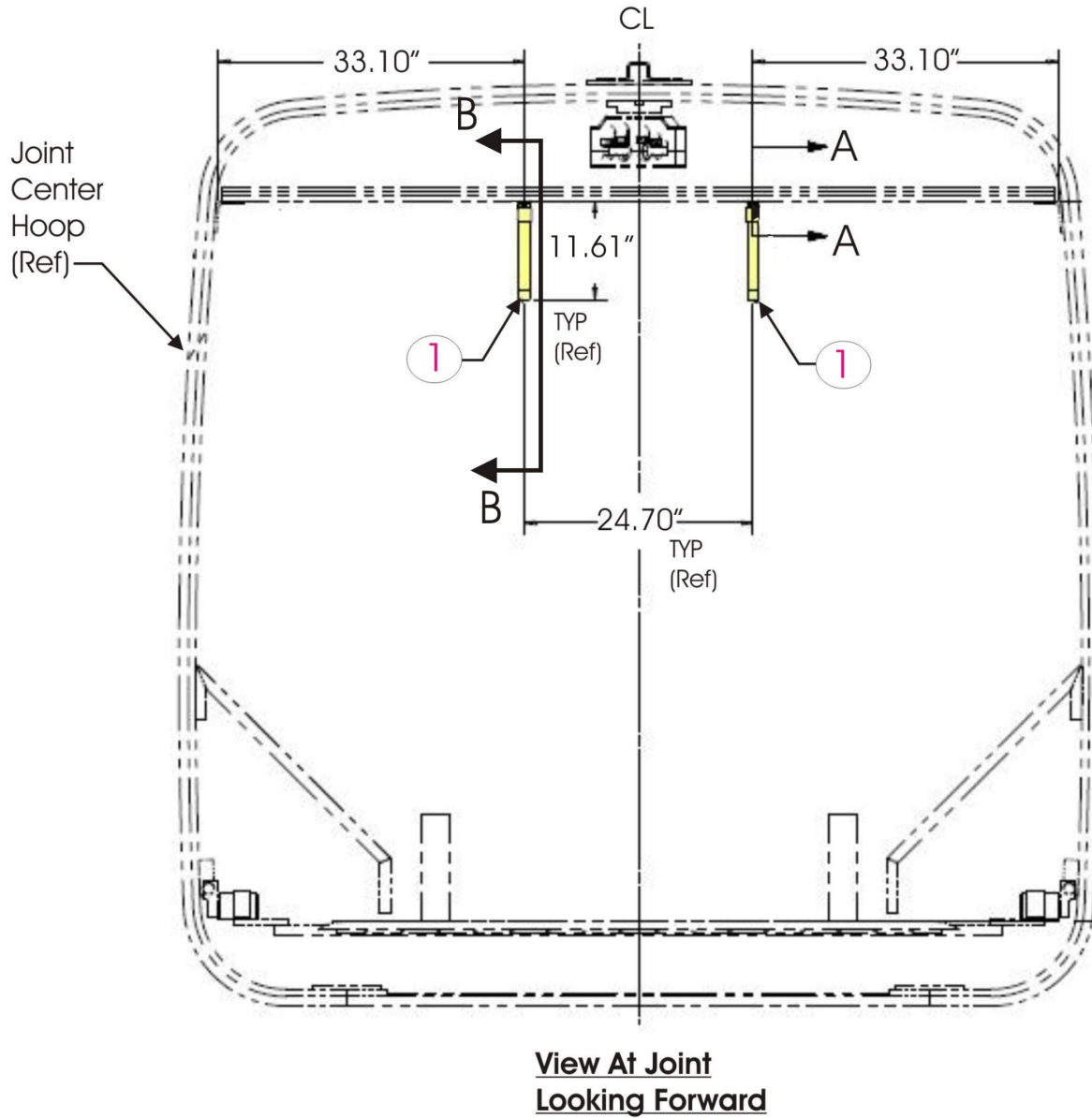
**PROCEDURE:**

1. Turn the main battery disconnect switch to the "OFF" position.
2. On the interior of the coach, locate the strap assists at the center hoop on the artic joint.
3. Remove the strap assists and mounting hardware from the center hoop. Discard the strap and set aside the original mounting hardware to use later. For steps 3 – 6, **Refer to Figure 1 – 3.**
4. Proceed to install the new strap assists. Install mating plate and strap assist (**NF PN: 419119**) using M8 bolt & supplied groove nut in ATG center hoop. Apply 1 to 2 drops of Loctite-638 (**NF PN: 392127**) to threads of M8 bolt before installation.
5. Torque M8 bolts to 14.7 FT – LBS wet for both strap assists.
6. Before installing screw into grab strap, add 1 to 2 drops of Loctite-638 to the threads. Install screw and **torque to 24 IN/LBS.**
7. Repeat step 4 – 6 to install the remaining strap.
8. Remove all tools and debris from work area to return coach to service condition.
9. Turn the main battery disconnect switch to the "ON" position.

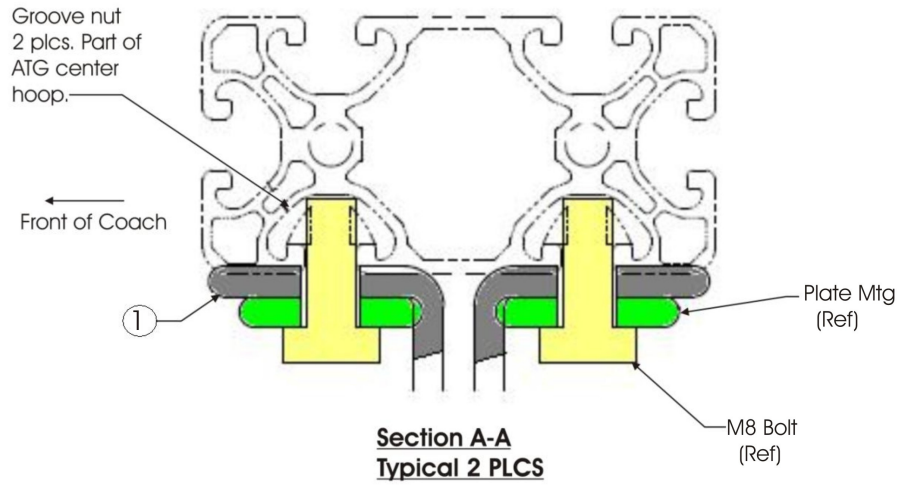


Current grab straps installed that will be removed and replaced with new designed straps.

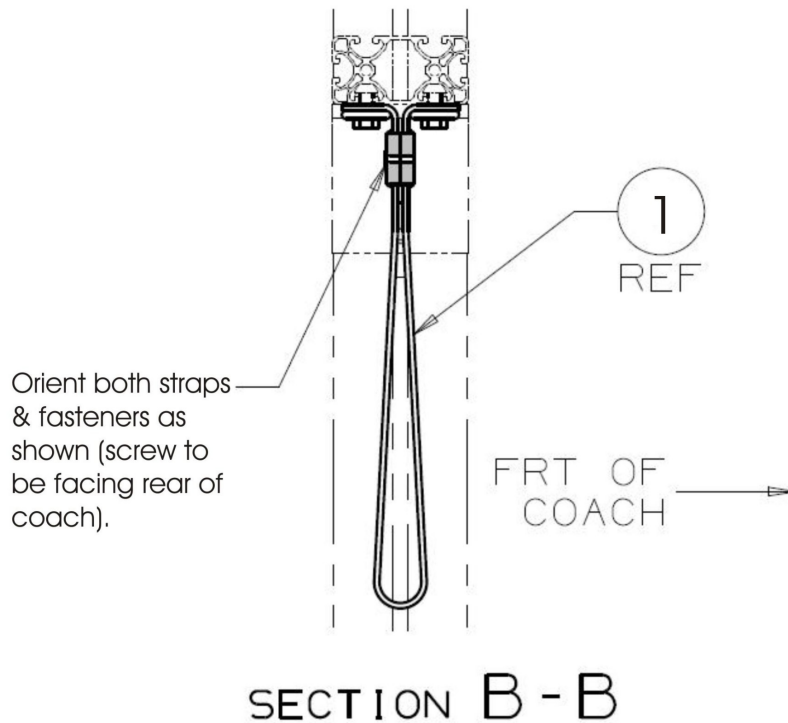
**FIGURE 1:** SHOWS THE CURRENT STRAPS INSTALLED AT THE CENTER HOOP AT THE ATG JOINT. THESE WILL BE REMOVED AND REPLACED WITH NEW DESIGNED GRAB STRAP.



**FIGURE 2:** SHOWN VIEW OF THE NEW STRAP-ASSIST (NF PN: 419119) INSTALLED ON THE CENTER HOOP AT THE ATG JOINT. SECTION A VIEW WILL SHOW INSTALLATION VIEW OF THE HARDWARE.



**FIGURE 2A:** SHOWN TOP VIEW OF THE STRAP-ASSIST ATTACHED WITH MOUNTING HARDWARE AT THE CENTER HOOP ON THE ATG JOINT.



**FIGURE 2B:** INSTALL GRAB STRAP AS STATED WITH SCREW TO BE FACING REAR OF COACH.



**FIGURE 3:** SHOWN VIEW OF THE NEW STRAP-ASSIST INSTALLED ON THE CENTER HOOP AT THE ATG JOINT.



<b>LABOUR ESTIMATE</b>				
	Operation	Men	Hours	Labour Time M X HR
1	Remove and replace with new style strap-assist on the center hoop at the ATG joint.	1	0.5	0.5

<b>PARTS REQUIRED</b>					
Item	Part Number	Description	Qty. per Coach	Units	Notes
1	419119	Strap - Assist Yellow	2	EA	
2	392127	Loctite – 638	0.01	EA	