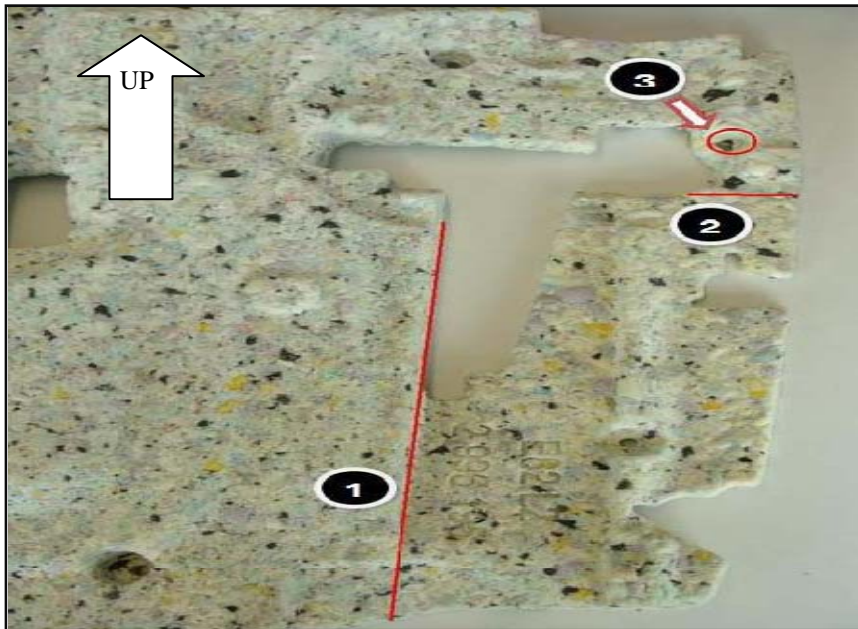


PROCEDURE

Modify the sound insulation on both the left-hand side and right-hand side as outlined below:

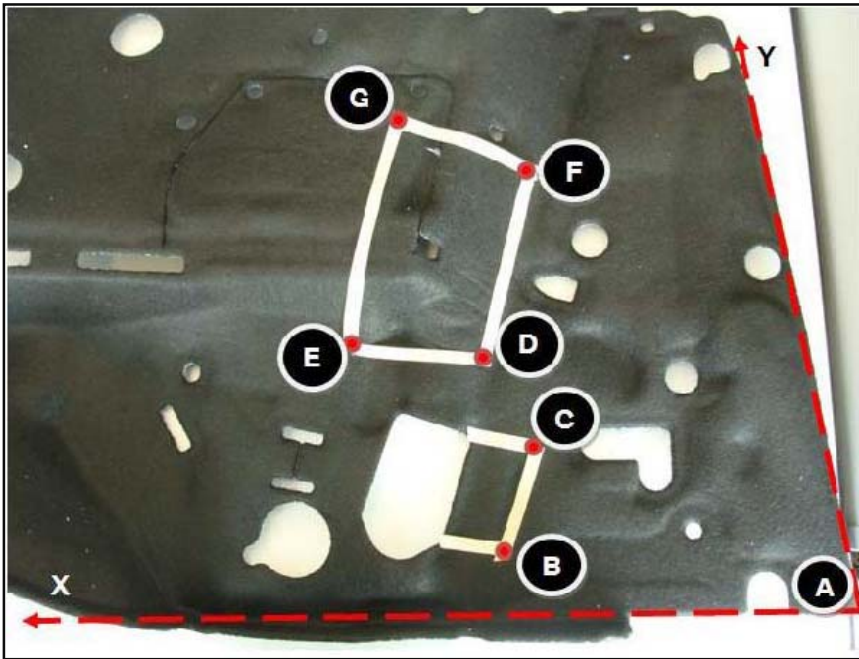
**E82 Vehicles:**

1. Disconnect the battery.
2. Remove the rear side panel and refer to ISTA repair instructions REP 51 43 000.
3. Remove the sound insulation.
4. Place the sound insulation on an adequate underlay, and cut the sound insulation with a sharp razor knife along the red line (1) and (2) as shown.

**Note:**

It is of utmost importance that the safety belt anchorage insulation point is not damaged in the area indicated by the red circle for both sides

5. The insulation for the other side is a "mirror-image".
6. Reinstall the modified sound insulation in the left and right B-pillars.
7. Install the new safety belt.
8. Reassemble the vehicle.

E88 Vehicles:

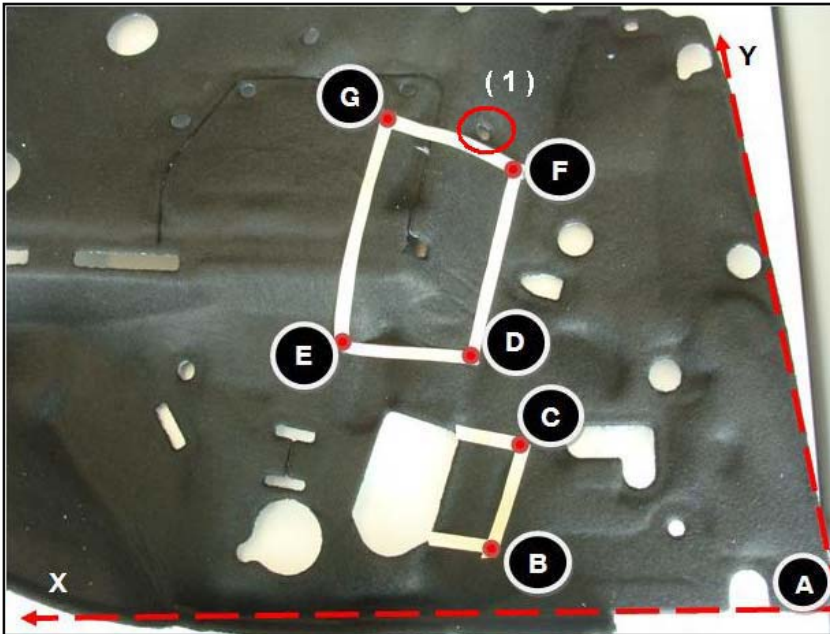
1. Disconnect the battery.
2. Remove the rear side panel and refer to ISTA repair instructions REP 51 43 034 and REP 51 43 012.
3. Remove the sound insulation.
4. Place the sound insulation on an adequate underlay, and cut the sound insulation with a sharp knife.

Measurements for cut-outs:

Reference Point	Distance from X in cm	Distance from X in Inch	Distance from Y in cm	Distance from Y in Inch
A	0	0	0	0
B	5	2	23	9.1
C	12	4.7	20	7.9
D	18	7.1	23	9.1
E	18	7.1	33	13
F	32	12.6	17	6.7
G	35	13.8	27	10.6

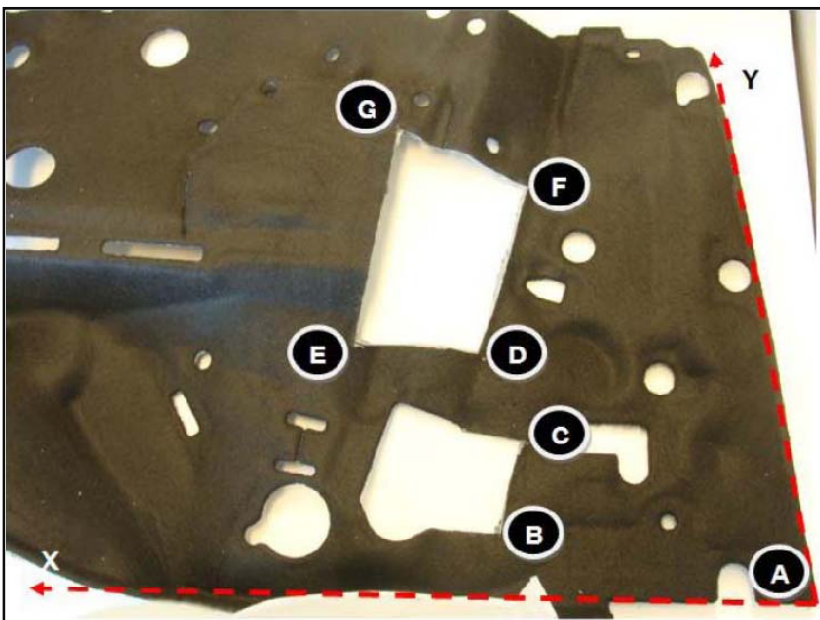
5. Refer to the dimensions from the table. Cut along the points (B) through (G) as shown in the picture.

Point (A) is the reference starting point.

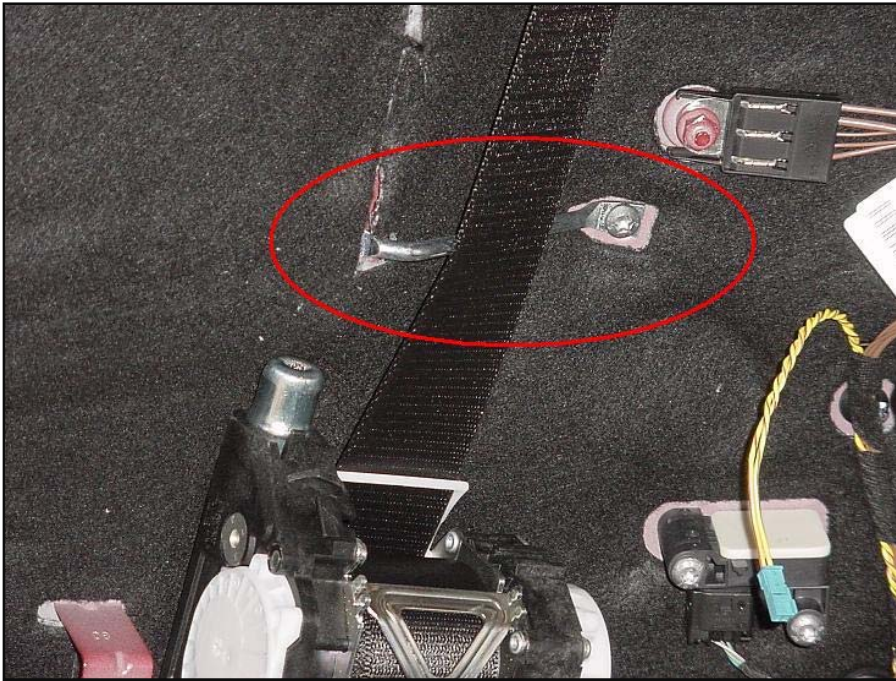
**NOTE:**

It is of utmost importance that the referenced dimensions are closely followed, and that the safety belt anchorage point (1) is not damaged!

- The Driver's side insulation is shown. Modify the sound Insulation for the passenger's side "mirror-image"



- Reinstall the modified sound insulation on the left and right quarter panels.



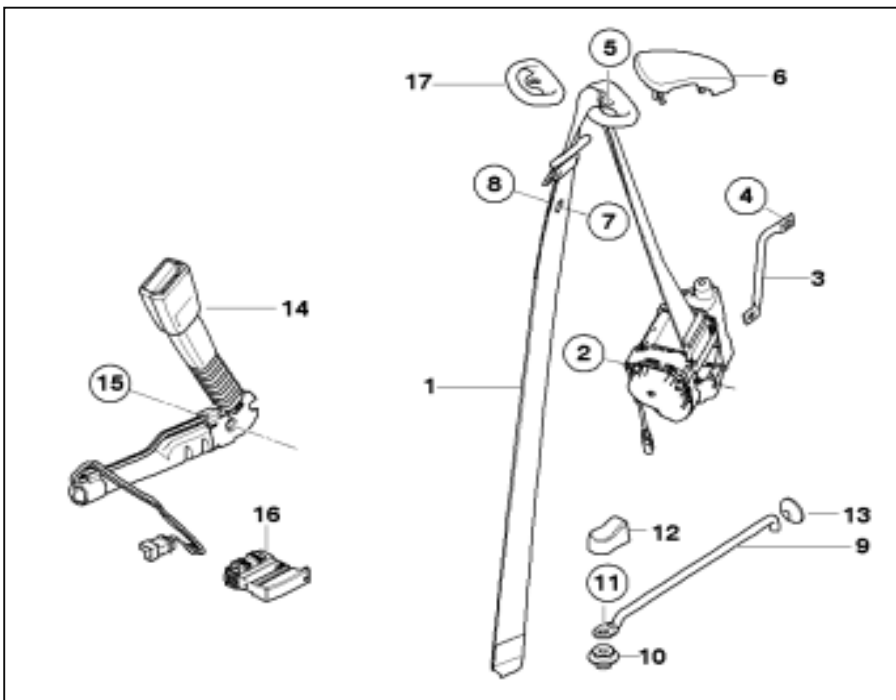
8. Reinstall the new seat belt.

NOTE:

The safety belt should be routed along the outside of the guide bar, not behind it.

9. Reassemble vehicle.

E88 vehicles with chrome seat belt roller:



Use the same procedure outlined above for the E88 to modify the sound insulation.

The chrome seat belt roller must be re-used. See ISTA repair instructions REP 72 11 170.

NOTE:

The screws (2) & (5) must be replaced.

Reassemble vehicle.