

Technical Bulletin

Division: Automotive
 Category: Technical

Section Title: Suspension
 TSB No. TS 01 05240R

SUBJECT: SAFETY RECALL CAMPAIGN: NR- FRONT SUSPENSION LOWER LINK, INSPECTION AND REPAIR.
MODEL(S): EQUATOR (A6I640)
YEAR: 2010

CONDITION: Suzuki is conducting a Voluntary Safety Recall Campaign on model year 2010 EQUATOR vehicles. Some of these vehicles may have welds on front suspension lower links that are out of specification. To address this, Suzuki will inspect, and if necessary, replace the suspension lower links at no charge for parts or labor.

CAUSE: Bushing collar tube had improper welding performed by the collar supplier.

CORRECTION: Dealers will inspect any vehicles identified by the attached VIN list to determine if the front lower suspension arms were part of the affected lots. If any of the potentially affected vehicles are in Dealer inventory, the recall must be completed before the vehicles can be retailed. **Any** of the lower links that are identified with the lot numbers listed below and determined to be “NG” (no good), must be replaced. Vehicles with lower links outside of this lot range, identified as “OK”, can be released to the customer or back into Dealer inventory for retail.

Federal law requires that new vehicles in dealer inventory which are the subject of a safety recall must be corrected prior to sale. Failure to do so can result in civil penalties by the National Highway Traffic Safety Administration. While federal law applies only to new vehicles, Suzuki strongly encourages dealers to correct any used vehicles in their inventory before the vehicles are retailed.

Technical Service Department
 Dealership Circulation – Initial and file:

Service Manager	Parts Manager	Service Advisor	Technicians						

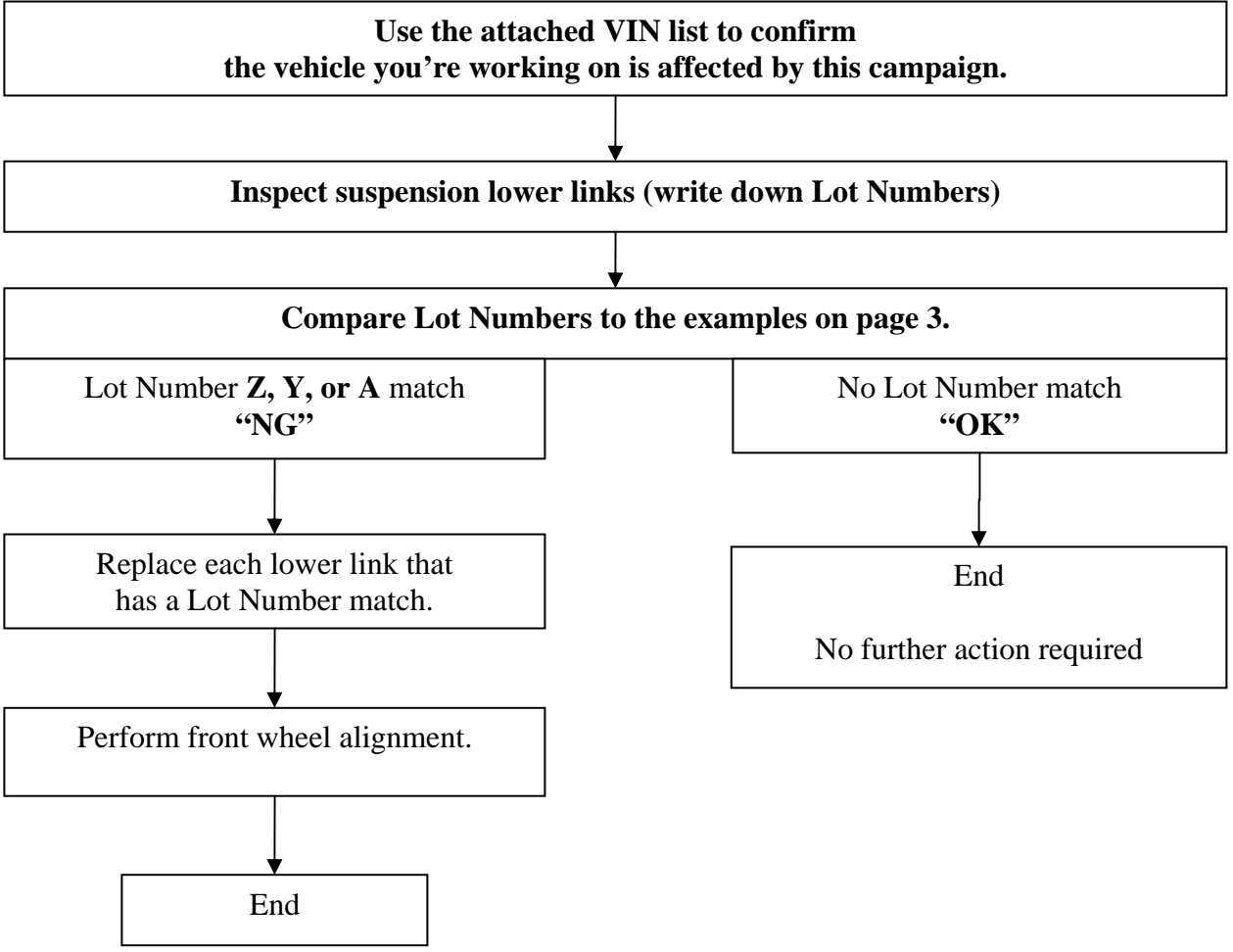
Suzuki bulletins are intended for use by professional technicians, NOT a “do-it-yourselfer.” They are written to inform these technicians of conditions that may occur on some vehicles, or to provide information that could assist in the proper service of a vehicle. Properly trained technicians have the equipment, tools, safety instructions, and know-how to do a job properly and safely. If a condition is described, DO NOT assume that the bulletin applies to your vehicle, or that your vehicle will have that condition. See your authorized Suzuki dealer for information on whether your vehicle may benefit from the information. Suzuki reserves the right to change technical specifications at any time without prior notice.

PART(S) INFORMATION:

Part Number	Description	Qty	Notes
45201-82Z10	Arm Assy, Front Suspension	1	RH Lower
45202-82Z10	Arm Assy, Front Suspension	1	LH Lower
4532A-82Z30	Nut	4*	* Requires Qty 2 per Arm Assy replaced (Must be replaced if removed)
18215-82Z50	Nut	2*	* Requires Qty 1 per Arm Assy replaced (Must be replaced if removed)

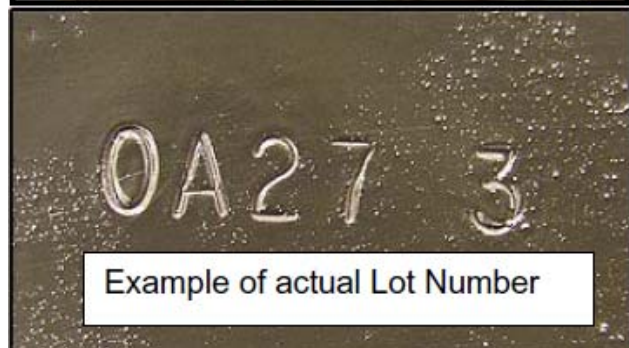
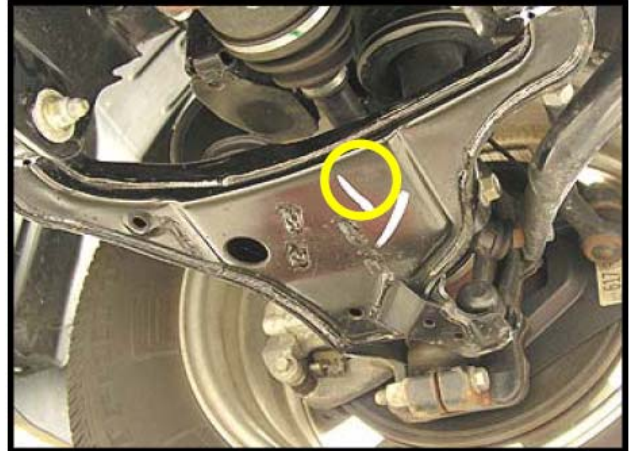
WARRANTY INFORMATION:

For additional details concerning the Recall Campaign NR and Claim submission instructions, please refer to Campaign Bulletin SC-48.



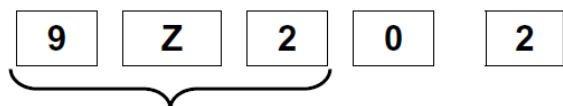
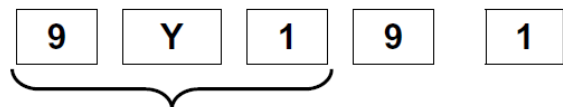
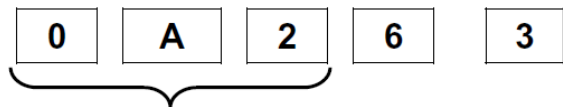
SERVICE PROCEDURE:**Lower Link Inspection**

1. Raise the vehicle on a lift.
2. Look for the “Lot Number” stamped into the underside of the front lower suspension arm assembly and write it down (this must be written on the repair order).

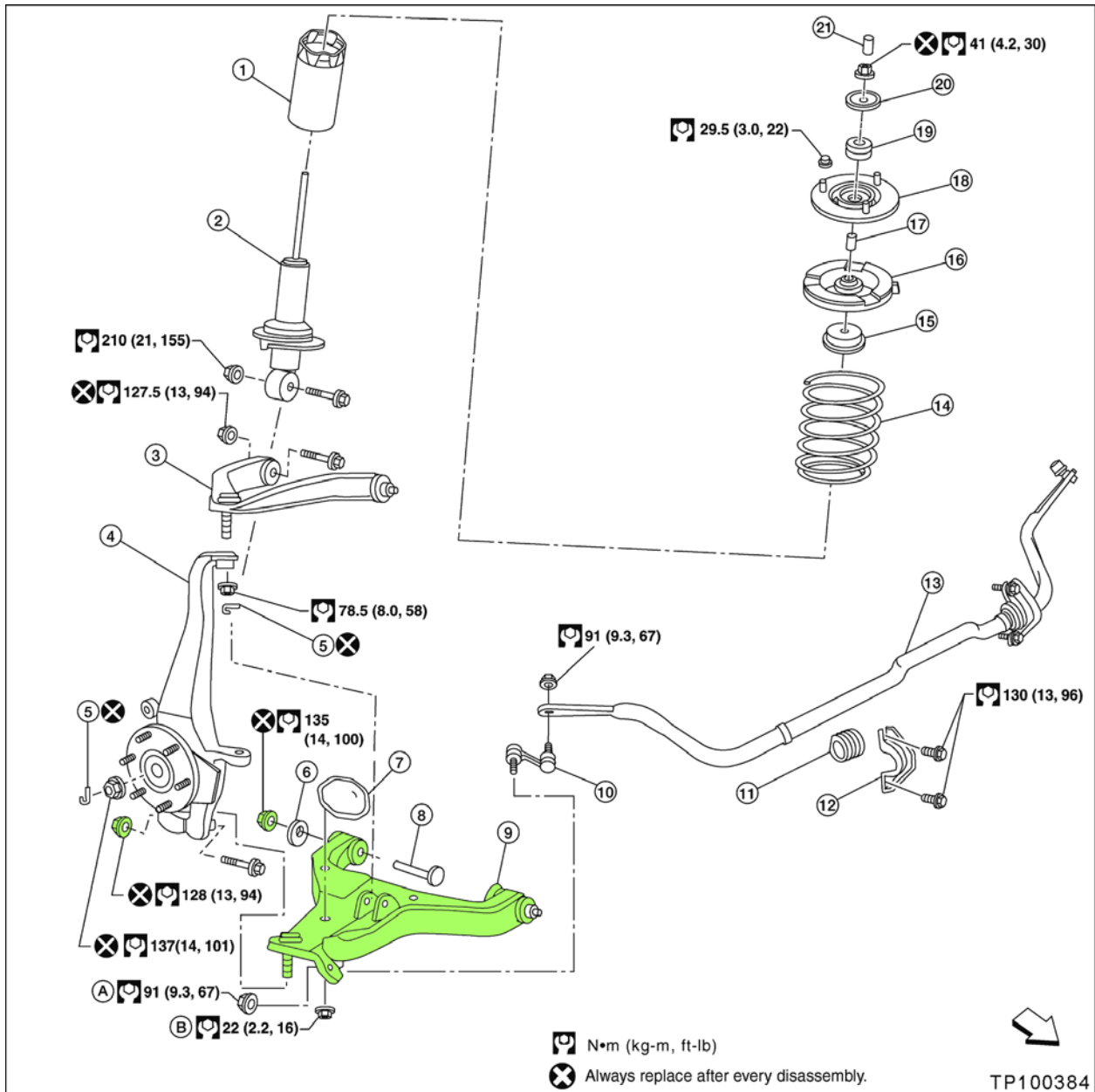


3. Check the first three positions from the left.
 - If **any** of the lower links have **A** or **Y** or **Z** in the first three positions of the lot number the vehicle must not be sold until after recall repairs have been performed.
 - If **any** of the lower links do not have a clearly identifiable letter in the first three positions of the lot number the vehicle must not be sold until after recall repairs have been performed.
 - If the lot number is missing on any of the lower links, the vehicle must not be sold until after recall repairs have been performed.
4. Vehicles passing the inspection and determined as “OK”, can be released using the Short Campaign Completion submission procedure found in the Campaign Bulletin SC-48. If one or both the lower links were determined as being “NG”, please proceed to step 5 of this instruction.

Examples of Lot Number:



Lower Link Replacement



- | | | |
|-----------------------|----------------------------|---------------------------------------|
| 1. Dust cover | 2. Shock absorber | 3. Upper link |
| 4. Steering knuckle | 5. Cotter pin | 6. Washer |
| 7. Jounce bumper | 8. Bolt | 9. Lower link |
| 10. Connecting rod | 11. Stabilizer bar bushing | 12. Stabilizer bar bracket |
| 13. Stabilizer bar | 14. Coil spring | 15. Dust cover cap |
| 16. Upper spring seat | 17. Spacer | 18. Shock absorber mounting insulator |
| 19. Spacer | 20. Washer | 21. Cap |
| ↶ Front | A. To connecting rod | B. To Jounce bumper |

5. For front lower link(s) identified as needing replacement, use the Online Service Manual found on www.SuzukiPitstopPlus.com, VEHICLE INFORMATION → SERVICE MANUALS → EQUATOR → 2010. Refer to Section 2 Suspension / 2B-Front Suspension / Repair Instructions / Lower Link: Removal and installation

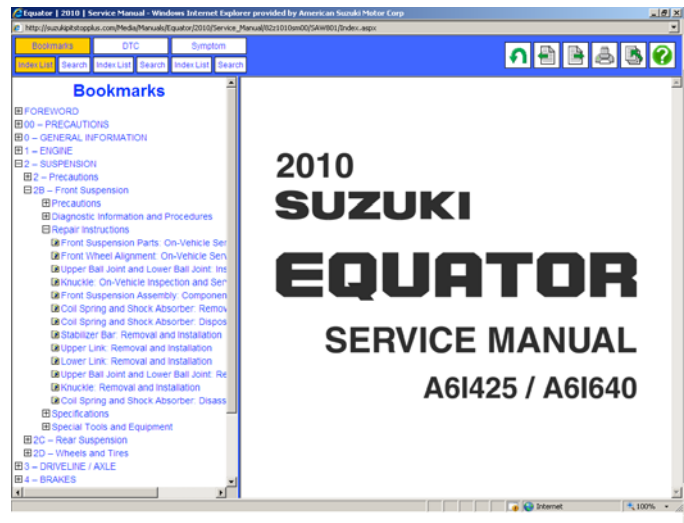
- All parts that require replacement are shaded green in the illustration provided above.
- Make sure to **replace the ball joint securing nut with a new one**. New nut is listed in the Parts Information.
- Make sure to **replace both lower link nuts with new ones**. New nuts are listed in the Parts Information.
- Follow torque specifications in the illustrations.

6. Perform a front wheel alignment. Refer to the Specifications found in the online service manual at Section 2 Suspension / 2B-Front Suspension / Specifications / Service Data and Specifications.

NOTE: The original (factory installed) bolts and washers for the front lower links are self centering and should not need replacement. The vehicle should need toe adjustment only.

7. Road test the vehicle.

8. The repairs are now complete. Please see part(s) disposal procedure in the next step.



9. Grind a Large X (about 1/16 inch deep) on the bottom side of the old link so it can be identified as a non-usable part.

**CAUTION**

Flying pieces of metal can cause injury.

Always wear suitable eye protection and gloves when using a grinder.

