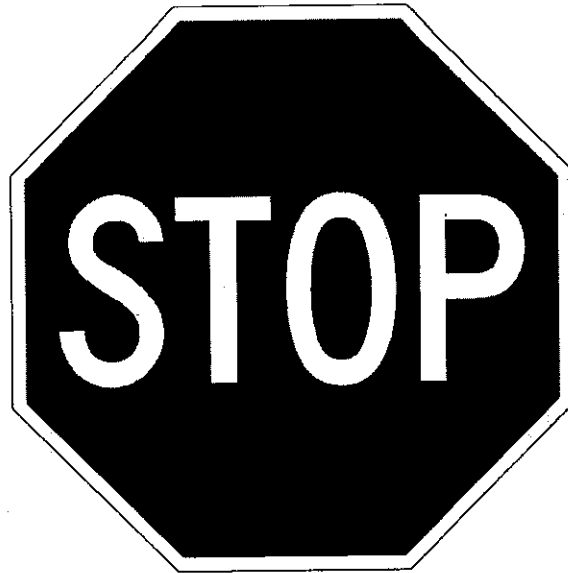


**TECHNICAL INSTRUCTIONS**  
**FOR**  
**SAFETY RECALL A0G**  
**SKID CONTROL ECU CALIBRATION UPDATE**  
**2003 MODEL YEAR SEQUOIA**

**TECHNICAL INSTRUCTION REVISION NOTICE:**

- **June 16, 2010:**
  - Additional reminders NOT to cycle the key during reprogramming have been included on pages 4, 6, and 8.
- **June 24, 2010:**
  - The procedure requiring the GR8 battery charger has been removed from the instructions.

**Previous versions of this Technical Instruction should be discarded.**



### **Important Note 1:**

**Before performing this repair you must have the “2003 Sequoia VSC Calibration Update Application” installed on your Techstream Toughbook.**



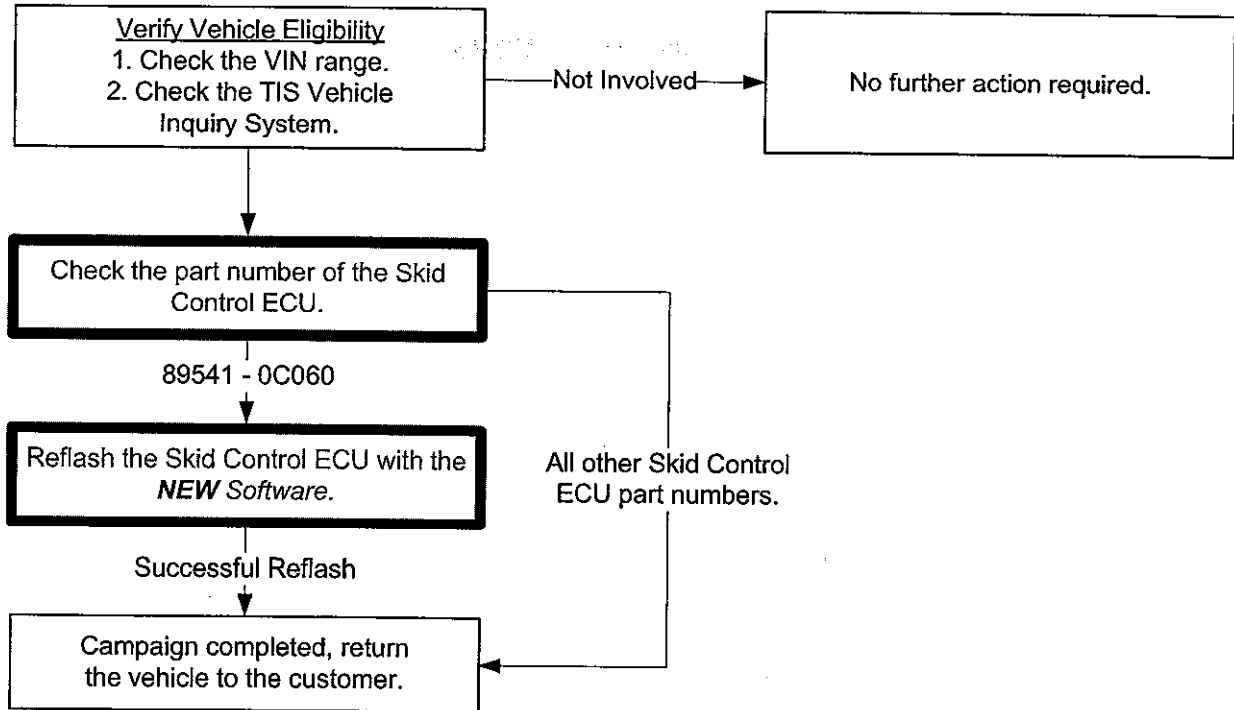
- 1. Click to download and read the application installation instructions.  
NOTE: You must be a certified technician to access the application.**

### **Important Note 2:**

**This procedure also requires the use of a custom Techstream cable to connect and reprogram the Skid Control ECU.**

- 2. You will not be able to reprogram the Skid Control ECU with the standard cable.**

## I. OPERATION FLOWCHART



## II. IDENTIFICATION OF AFFECTED VEHICLES

### A. AFFECTED VIN RANGE

Model	WMI	Year	VIN Range	
			VDS	Range
Sequoia	5TD	2003	BT44A	S101211 - S187555
			BT48A	S099426 - S187569
			ZT34A	S100033 - S187571
			ZT38A	S100343 - S187568

#### NOTE:

- Check the TIS Vehicle Inquiry System to confirm the VIN is involved in this Safety Recall, and that the campaign has not already been completed prior to dealer shipment or by another dealer.
- TMS warranty will not reimburse dealers for repairs conducted on vehicles that are not affected or were completed by another dealer.

## III. PREPARATION

### A. TOOLS & EQUIPMENT

- Techstream Panasonic Toughbook. (Windows XP only) with A0G application software installed.
- A0G-CABLE (Special DLC3 to RS232 Connector) ⇨

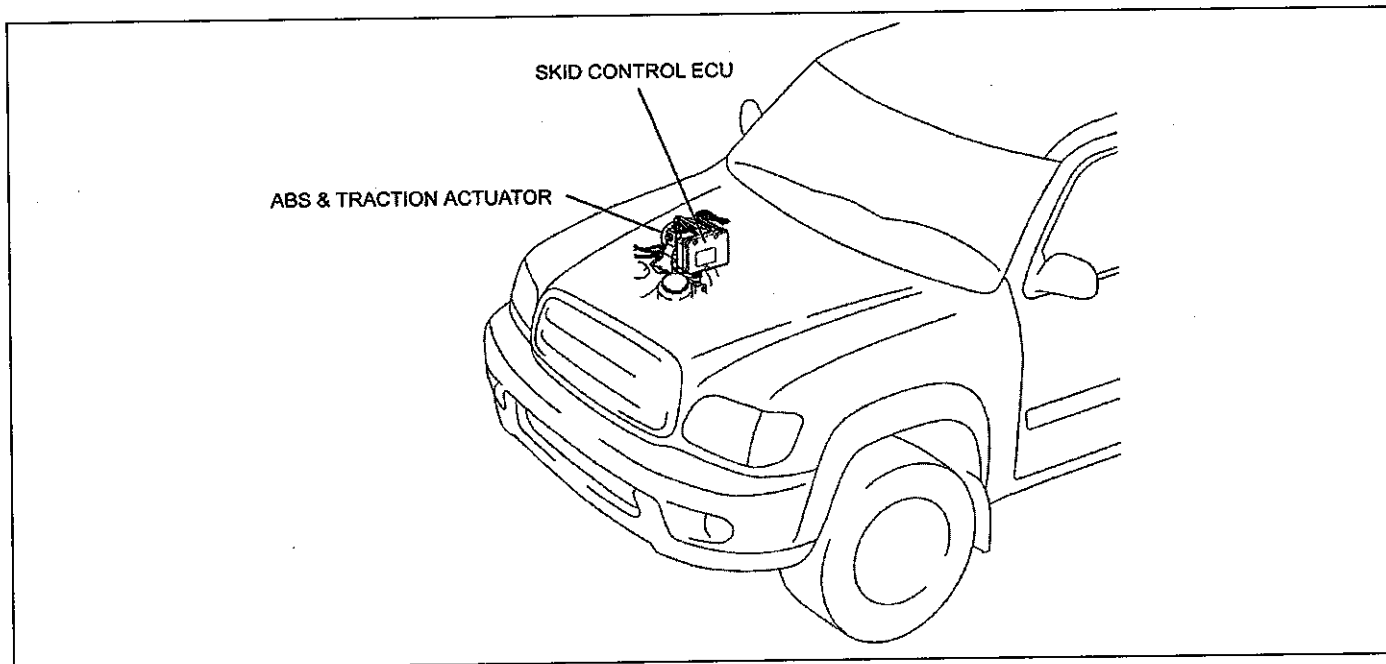
### B. PARTS

- No parts are required.



## IV. BACKGROUND

On certain 2003 Model Year Toyota Sequoia vehicles, the center position of the Steering Angle Sensor (SAS) may not be stored correctly due to improper logic of the Skid Control ECU programming. If this occurs, in most cases the VSC/TRAC warning light will illuminate. However, in limited situations the Vehicle Stability Control (VSC) system could activate at low speed (approximately 9 mph) for a few seconds after acceleration from a stopped position, and the vehicle may not accelerate as quickly as the driver expects.



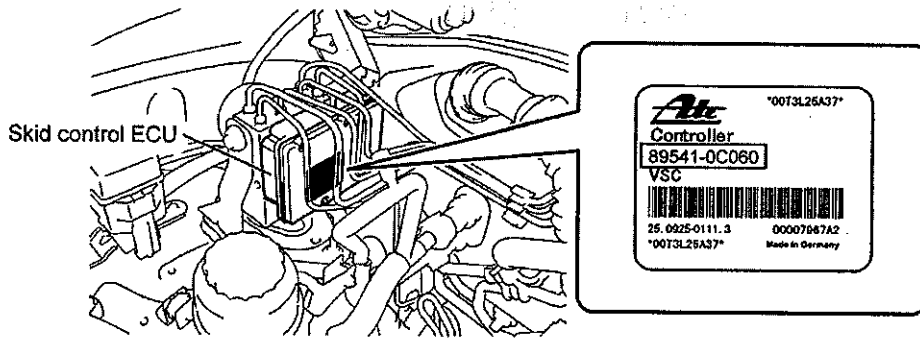
### Prevent Skid Control ECU Damage During Reprogramming:

- Do NOT turn the ignition off during reprogramming.
- Do NOT allow the Techstream to shut off during reprogramming, keep it plugged in to an AC power supply.
- Do NOT close the application software window during reprogramming.

**Remember:**  
**NEVER cycle the key and**  
**NEVER turn off the ignition during**  
**the reprogramming process!**  
**These actions will cause**  
**permanent ECU damage!**

## V. WORK PROCEDURE

### 1. CHECK THE PART NUMBER OF THE SKID CONTROL ECU

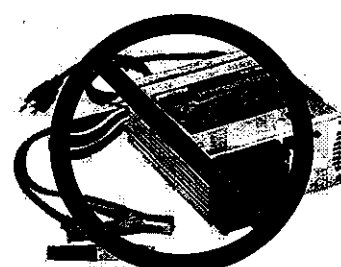
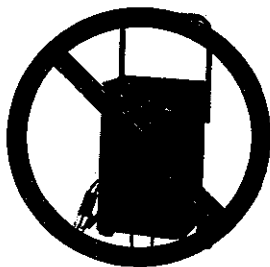


SKID CONTROL ECU PART NUMBER	WORK CONTENTS
89541-0C060	Reprogram the skid control ECU
All other Skid Control ECU part numbers	Vehicle does NOT require reprogramming

### 2. VEHICLE PREPARATION

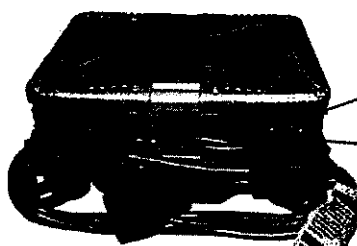
- Check for any preexisting VSC codes in the Skid Control ECU memory.
  - If DTC C1231, C1247, C1310 exists you may proceed with this procedure.
  - If any other VSC codes exist except for DTC C1231, C1247, C1310 troubleshoot according to the repair manual before proceeding.
- Confirm the vehicle/ignition is off.
- Open the hood and ensure the engine compartment temperatures do not exceed 212° F.
- Check the battery voltage.** If the battery voltage is lower than 12 volts, **CHARGE** the battery before reprogramming the skid control ECU.

**Do NOT have any battery charger installed on the vehicle when performing this reprogramming procedure.**



- Not using a battery charger during skid control ECU reprogramming applies to A0G reprogramming **ONLY**.

- Using the A0G-CABLE, connect one side to the RS232 Serial Port on the Techstream and the other side to the DLC3 connector on the vehicle.



RS232 Serial Port

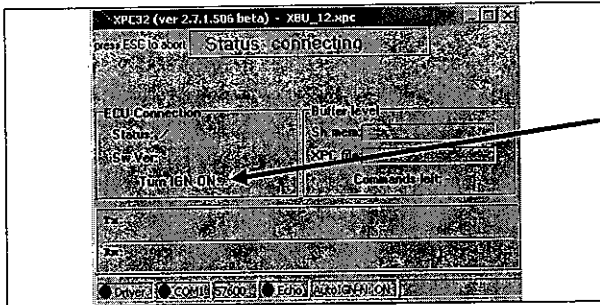
### 3. SKID CONTROL REPROGRAMMING



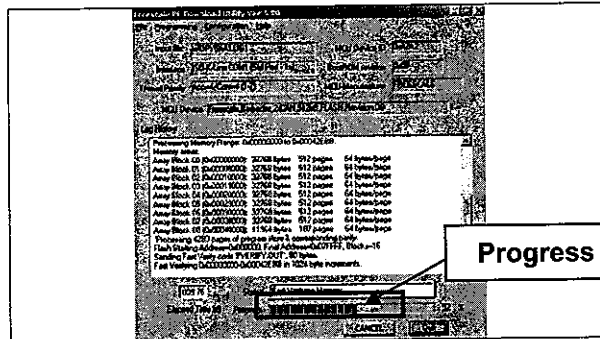
- Do NOT apply any electrical load while reprogramming. (i.e. audio, A/C, defroster...)
- Do NOT touch the mouse buttons / touch screen / or keyboard after the reprogramming has started until it completes.



a) Confirm the ignition is off and then double click this icon from the desktop.

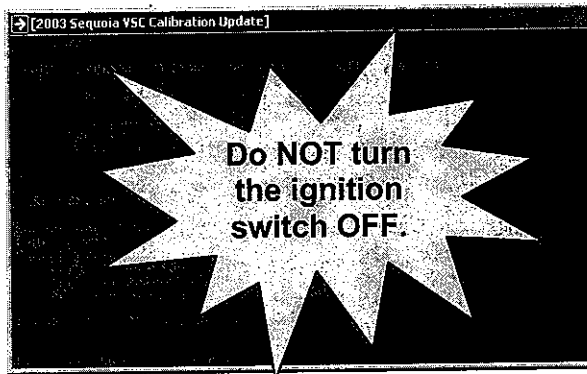


b) Turn the ignition on when prompted: **TURN IGN ON**

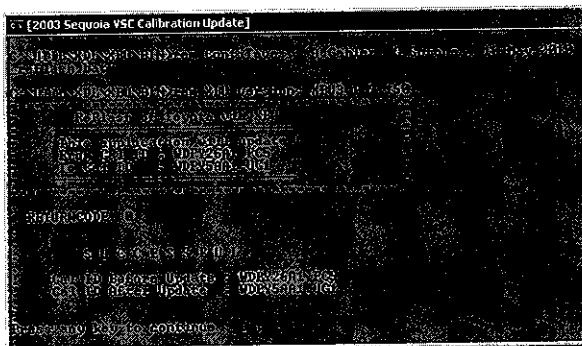


**Progress Bar**

c) Wait approximately 6-7 minutes until the reprogramming completes.



If you receive a RED screen after the reprogramming progress bar has started: **Keep the ignition ON – Confirm that NO battery charger is being used on the vehicle** and immediately skip to the appendix for instructions on how to perform the VSC Failure Recovery.



- d) A green screen will indicate the completion of the reprogramming or if the reprogramming has already been completed. (code "0" or "2073")
- e) Press any key to continue/close the reprogramming window.

**NOTE:** If the screen turns BLACK after reprogramming, immediately skip to the appendix for additional information.

**4. CONFIRM VEHICLE CONDITION AFTER REPROGRAMMING THE SKID CONTROL ECU**

- a) Turn off the ignition.
- b) Disconnect the GR8 Battery Diag. Station or PSC Power Supply Charger/Maintainer (MTRPSC550SKT).



Do NOT restart the vehicle until you have disconnected the GR8 from the vehicle.

- c) Start the vehicle and confirm the ABS warning light turns off.

**5. CHECK FOR DTC CODES**

- a) Connect the Techstream to the DLC3.
- b) Confirm NO new Skid Control DTC's have occurred.

**NOTE:**

If any Pending, Current, and/or History DTCs are set, troubleshoot according to the repair manual.

**6. TEST DRIVE THE VEHICLE AND INSPECT FOR ANY PROBLEMS**

**- CAMPAIGN COMPLETE -**

## VI. APPENDIX

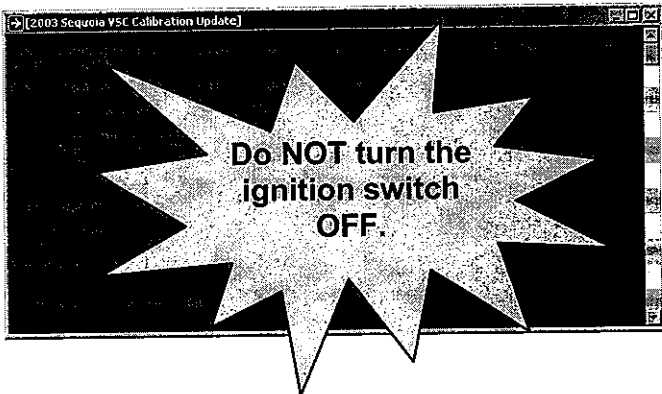
Only refer to this appendix if you have received a red or black error screen after attempting to reprogram the Skid Control ECU.

```
[2003 Sequoia VSC Calibration Update]
C:\NTL\NDE\XBU\BIN>ren ContiTeves, A.Gahler, G.Sefonea, 21-May-2010 "Toyota
reflash.bat"
C:\NTL\NDE\XBU\BIN>ren XBU version: XBU3.1.9.152
ReFlash of Toyota via XBU
-----
This application will update
From Cal ID : UDPV26A1.PC5
To Cal ID : UDPV5AA1.UG1
-----
RETURNCODE 156
This application is not authorized to update this ECU !
Confirm if correct vehicle is being updated.
This application can only update
Cal ID UDPV26A1.PC5 to Cal ID UDPV5AA1.UG1.
Press any key to continue . . .
```

**RETURNCODE 156: Wrong Calibration ID Number:**

**Cause:**

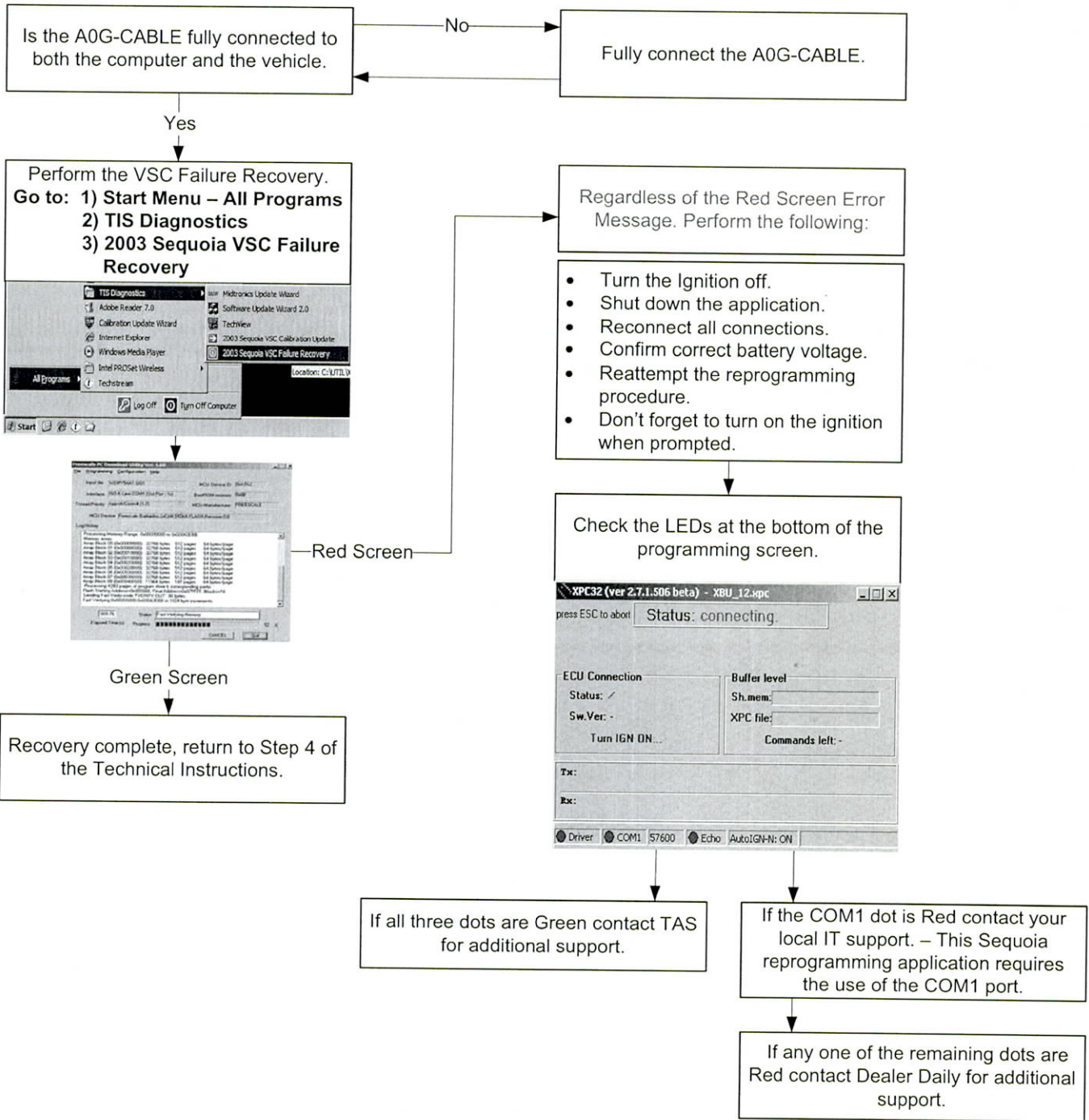
This Skid Control ECU is not part of this safety recall.



If you received a red error screen proceed to the next page to perform the VSC Failure Recovery.



# RED SCREEN Troubleshooting Chart



**TECHNICAL INSTRUCTIONS**  
**FOR**  
**SAFETY RECALL A0G**  
**SKID CONTROL ECU CALIBRATION UPDATE**  
**2003 MODEL YEAR SEQUOIA**

**TECHNICAL INSTRUCTION REVISION NOTICE:**

- **June 16, 2010:**
  - **Additional reminders NOT to cycle the key during reprogramming have been included on pages 4, 6, and 8.**

**Previous versions of this Technical Instruction should be discarded.**



### **Important Note 1:**

**Before performing this repair you must have the “2003 Sequoia VSC Calibration Update Application” installed on your Techstream Toughbook.**



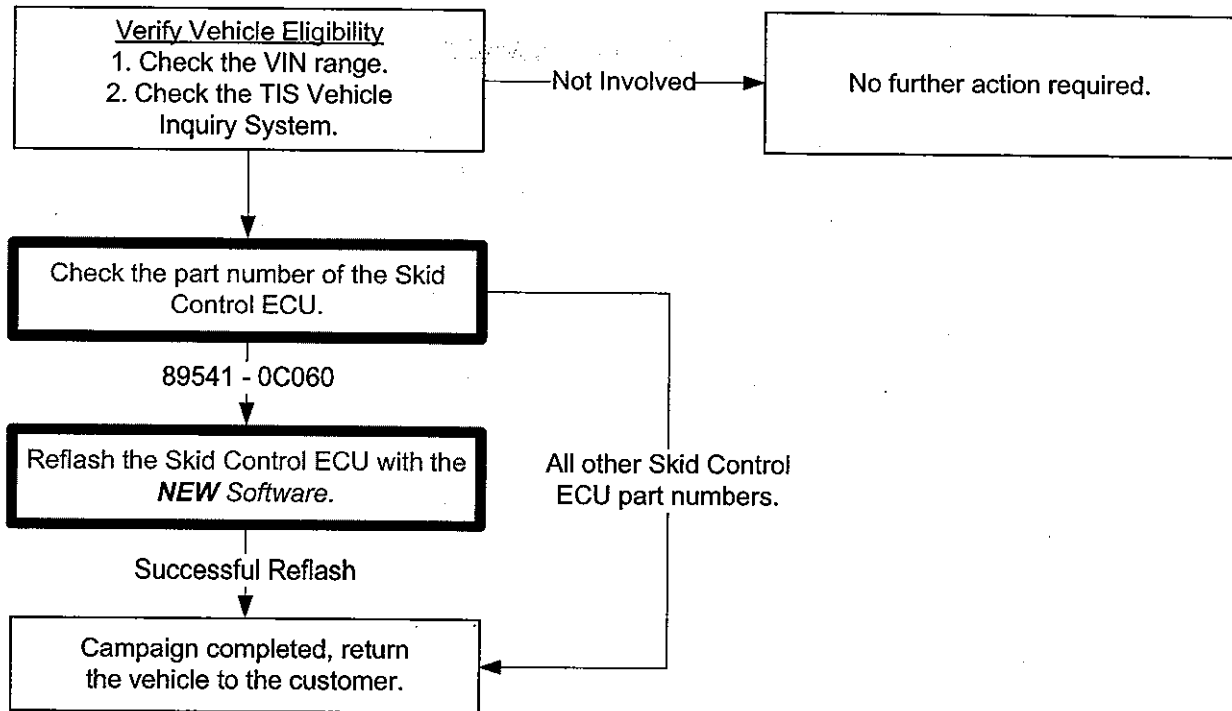
- 1. Click to download and read the application installation instructions.  
NOTE: You must be a certified technician to access the application.**

### **Important Note 2:**

**This procedure also requires the use of a custom Techstream cable to connect and reprogram the Skid Control ECU.**

- 2. You will not be able to reprogram the Skid Control ECU with the standard cable.**

## I. OPERATION FLOWCHART



## II. IDENTIFICATION OF AFFECTED VEHICLES

### A. AFFECTED VIN RANGE

Model	WMI	Year	VIN Range	
			VDS	Range
Sequoia	5TD	2003	BT44A	S101211 - S187555
			BT48A	S099426 - S187569
			ZT34A	S100033 - S187571
			ZT38A	S100343 - S187568

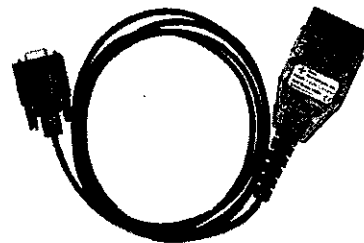
#### NOTE:

- Check the TIS Vehicle Inquiry System to confirm the VIN is involved in this Safety Recall, and that the campaign has not already been completed prior to dealer shipment or by another dealer.
- TMS warranty will not reimburse dealers for repairs conducted on vehicles that are not affected or were completed by another dealer.

## III. PREPARATION

### A. TOOLS & EQUIPMENT

- Techstream Panasonic Toughbook. (Windows XP only) with A0G application software installed.
- GR8 Battery Diagnostic Station, if unavailable, the PSC Power Supply Charger / Maintainer (MTRPSC550SKT) may be used.
- A0G-CABLE (Special DLC3 to RS232 Connector) ⇒

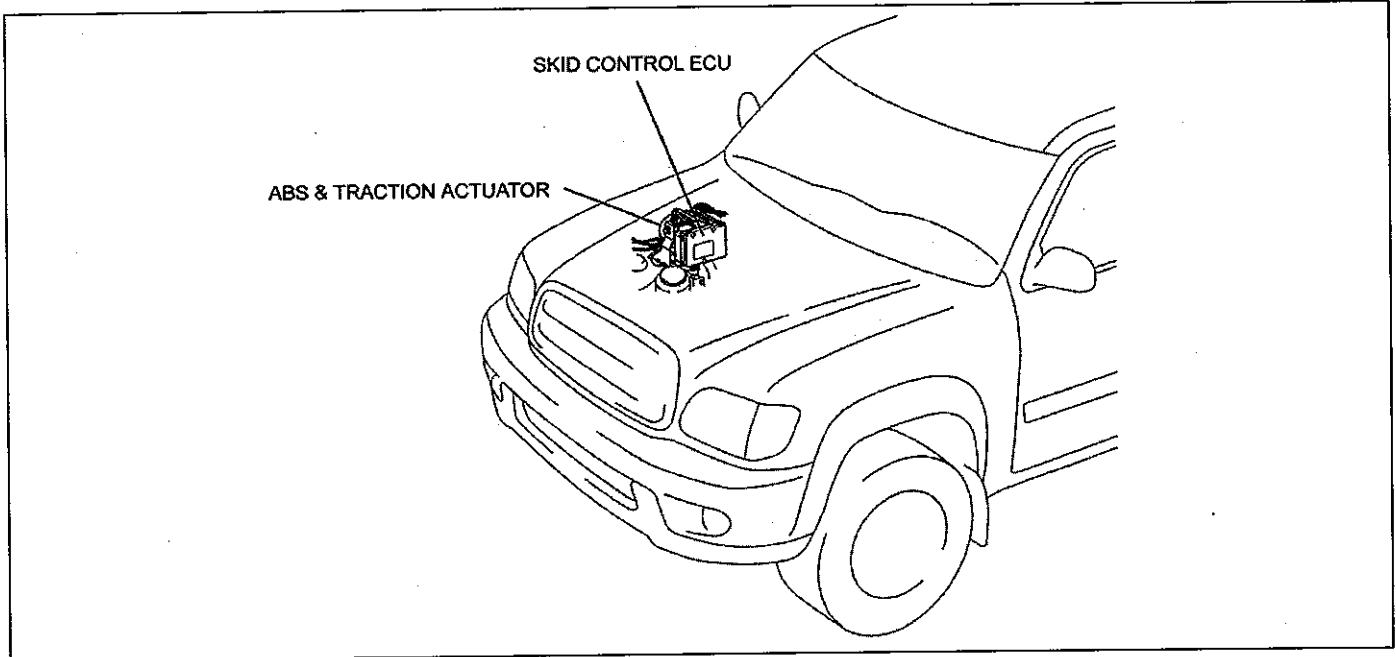


### B. PARTS

- No parts are required.

## IV. BACKGROUND

On certain 2003 Model Year Toyota Sequoia vehicles, the center position of the Steering Angle Sensor (SAS) may not be stored correctly due to improper logic of the Skid Control ECU programming. If this occurs, in most cases the VSC/TRAC warning light will illuminate. However, in limited situations the Vehicle Stability Control (VSC) system could activate at low speed (approximately 9 mph) for a few seconds after acceleration from a stopped position, and the vehicle may not accelerate as quickly as the driver expects.



### Prevent Skid Control ECU Damage During Reprogramming:

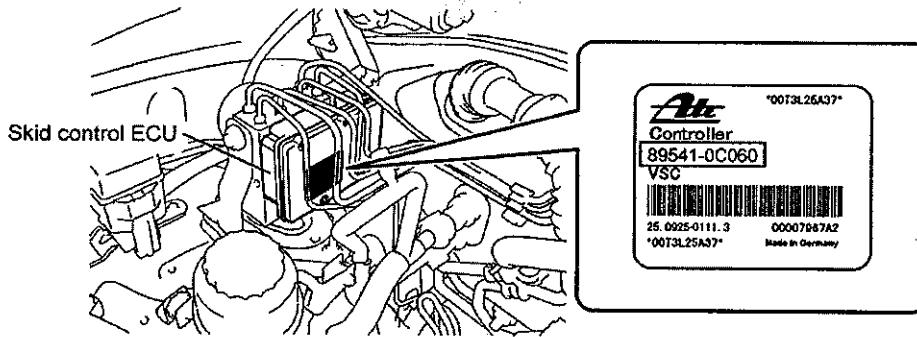
- Do NOT turn the ignition off during reprogramming.
- Do NOT allow the Techstream to shut off during reprogramming, keep it plugged in to an AC power supply.
- Do NOT close the application software window during reprogramming.

### Remember:

**NEVER cycle the key and  
NEVER turn off the ignition during  
the reprogramming process!  
These actions will cause  
permanent ECU damage!**

## V. WORK PROCEDURE

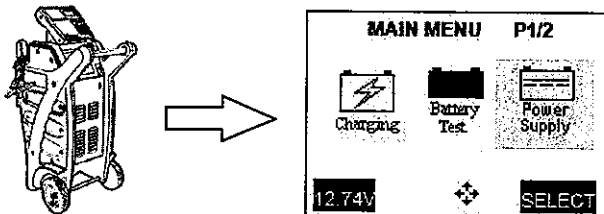
### 1. CHECK THE PART NUMBER OF THE SKID CONTROL ECU



SKID CONTROL ECU PART NUMBER	WORK CONTENTS
89541-0C060	Reprogram the skid control ECU
All other Skid Control ECU part numbers	Vehicle does NOT require reprogramming

### 2. VEHICLE PREPARATION

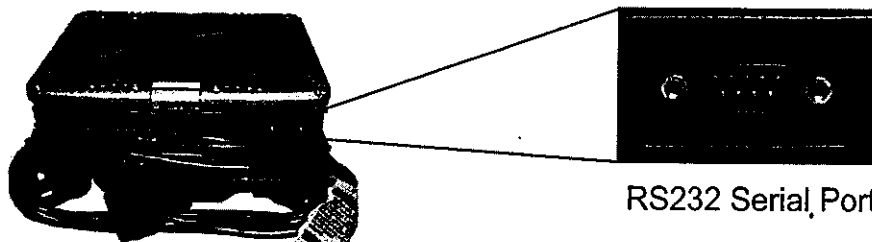
- Check for any preexisting VSC codes in the Skid Control ECU memory.
  - If DTC C1231, C1247, C1310 exists you may proceed with this procedure.
  - If any other VSC codes exist except for DTC C1231, C1247, C1310 troubleshoot according to the repair manual before proceeding.
- Confirm the vehicle/ignition is off.
- Open the hood and ensure the engine compartment temperatures do not exceed 212° F.
- Connect the GR8 Battery Diagnostic Station to the vehicle and select Power Supply Mode.



#### NOTE:

- The GR8 Battery Diagnostic Station **MUST** be used in Power Supply Mode to maintain battery voltage at 13.5 volts while flash reprogramming the vehicle.
- For details on how to use the GR8 Battery Diagnostic Station, refer to the GR8 Instruction Manual located on TIS, *Diagnostics – Battery*.
- If the GR8 Battery Diagnostic Station is unavailable, the PSC Power Supply Charger / Maintainer (MTRPSC550SKT) may be used.

- Using the A0G-CABLE connect one side to the RS232 Serial Port on the Techstream and the other side to the DLC3 connector on the vehicle.



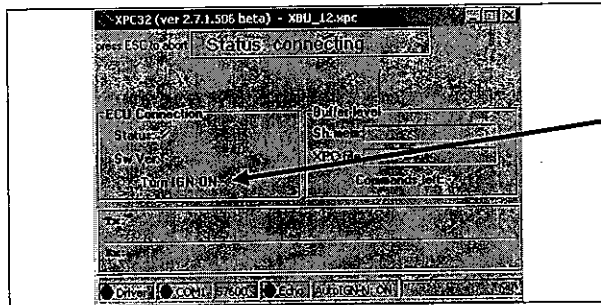
### 3. SKID CONTROL REPROGRAMMING



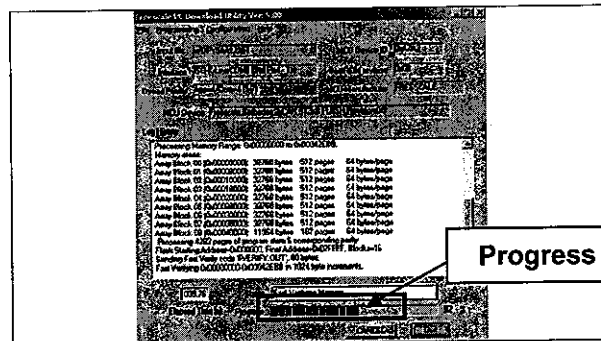
- Do NOT apply any electrical load while reprogramming. (i.e. audio, A/C, defroster...)
- Do NOT touch the mouse buttons / touch screen / or keyboard after the reprogramming has started until it completes.



a) Confirm the ignition is off and then double click this icon from the desktop.

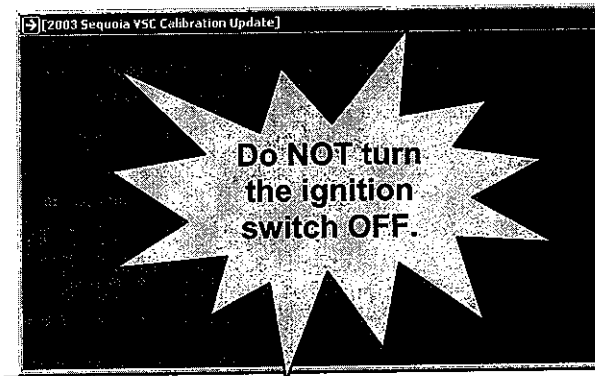


b) Turn the ignition on when prompted: **Turn IGN ON**

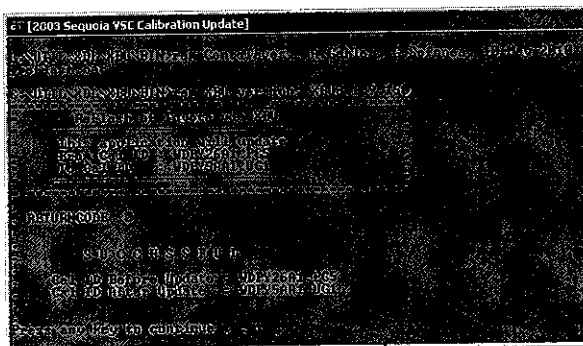


c) Wait approximately 6-7 minutes until the reprogramming completes.

Progress Bar



If you receive a RED screen after the reprogramming progress bar has started: **Keep the ignition ON** and immediately skip to the appendix for instructions on how to perform the VSC Failure Recovery.



d) A green screen will indicate the completion of the reprogramming or if the reprogramming has already been completed. (code "0" or "2073")

e) Press any key to continue/close the reprogramming window.

**NOTE:** If the screen turns **BLACK** after reprogramming, immediately skip to the appendix for additional information.

**4. CONFIRM VEHICLE CONDITION AFTER REPROGRAMMING THE SKID CONTROL ECU**

- a) Turn off the ignition.
- b) Disconnect the GR8 Battery Diag. Station or PSC Power Supply Charger/Maintainer (MTRPSC550SKT).



Do NOT restart the vehicle until you have disconnected the GR8 from the vehicle.

- c) Start the vehicle and confirm the ABS warning light turns off.

**5. CHECK FOR DTC CODES**

- a) Connect the Techstream to the DLC3.
- b) Confirm NO new Skid Control DTC's have occurred.

**NOTE:**

If any Pending, Current, and/or History DTCs are set, troubleshoot according to the repair manual.

**6. TEST DRIVE THE VEHICLE AND INSPECT FOR ANY PROBLEMS**

**- CAMPAIGN COMPLETE -**



## VI. APPENDIX

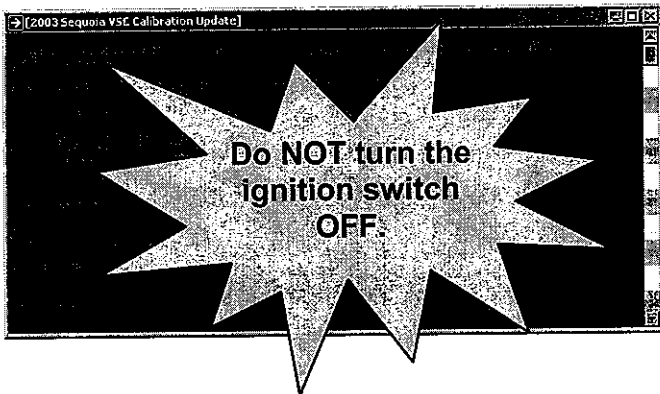
Only refer to this appendix if you have received a red or black error screen after attempting to reprogram the Skid Control ECU.

```
[2003 Sequoia VSC Calibration Update]
C:\MTHL\XBL\XBU\BIN>ren Contiloves, A.Gahler, G.Sefonea, 21-May-2010 "Toyota
_reflash.dat"
C:\MTHL\XBL\XBU\BIN>ren XBU version: XBU3.1.9.152
=====
ReFlash of Toyota via XBU
=====
This application will update
From Cal ID : UDPV2501.PCS
To Cal ID   : UDPV5801.U01
=====
RETURNCODE 156
This application is not authorized to update this ECU !
Confirm if correct vehicle is being updated.
This application can only update
Cal ID UDPV2501.PCS to Cal ID UDPV5801.U01.
Press any key to continue . . .
```

**RETURNCODE 156: Wrong Calibration ID Number:**

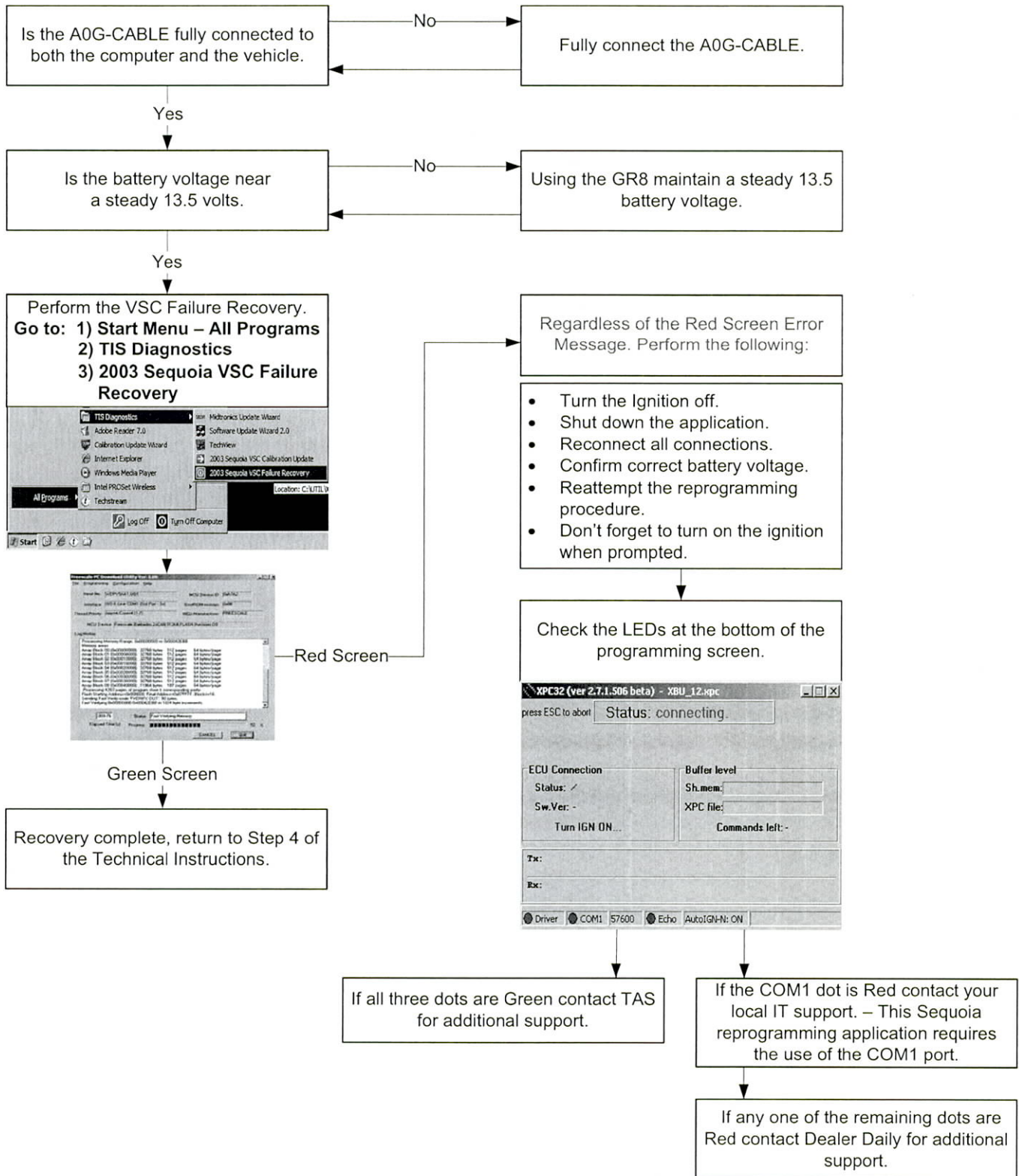
**Cause:**

This Skid Control ECU is not part of this safety recall.



If you received a red error screen proceed to the next page to perform the VSC Failure Recovery.

## RED SCREEN Troubleshooting Chart



**A0G SOFTWARE APPLICATION  
INSTALLATION GUIDE**

# SOFTWARE INSTALLATION

Model	Model Year	Previous version	New version
SEQUOIA	2003	WDPY26A1.PC5	WDPY5AA1.UG1

- The Techstream Panasonic Toughbook is highly recommended for this procedure. The PC used for reprogramming must use Windows XP and must have an RS232 connector with an open COM1 port.
- You must have administrator rights to successfully load the exe. file. Please contact your dealership IT staff if you are unsure of your computer access level.

1. Navigate to the TIS – Diagnostics – Calibrations page – Reference Documents.
2. Click on the “Download and Run the AOG Reprogramming Application” link.

NOTE: You must be a certified technician to access this TIS location.

The screenshot shows the TIS website interface. At the top, there are navigation tabs for Library, Tech Assistance, and Vehicle Inquiry. Below these are sub-tabs for Scan Tool, Immobilizer Reset, Telematics, and Tools & Equipment. The main content area is divided into two sections: 'Calibration Search Form' and 'Reference Documents'. The 'Calibration Search Form' has a search criteria section with 'Division/Model/Year' selected. The 'Reference Documents' section lists several documents, including 'Safety Recall AOG - 2003 Sequoia - Skid Control ECU Update'. A 'Pop-up' window is overlaid on the search form, containing the following text:

**Safety Recall AOG - 2003 Sequoia - Skid Control ECU Update**  
**AOG Reprogramming Application Installation**  
 Follow these steps to install the AOG Reprogramming Application on your Techstream Panasonic Toughbook.

1. **Download and Read the Installation Guide**  
 Only the Techstream Panasonic Toughbook is recommended for AOG reprogramming. See installation instructions for details.
2. **Download and Run the AOG Reprogramming Application**  
 This specialized application, "2003 Sequoia VSC Calibration Update", is designed exclusively to perform AOG reprogramming. Follow installation instructions carefully.
3. **Follow the AOG Technical Instructions**  
 Important - Follow the AOG Technical Instructions carefully. Improper reprogramming will cause Skid Control ECU damage!

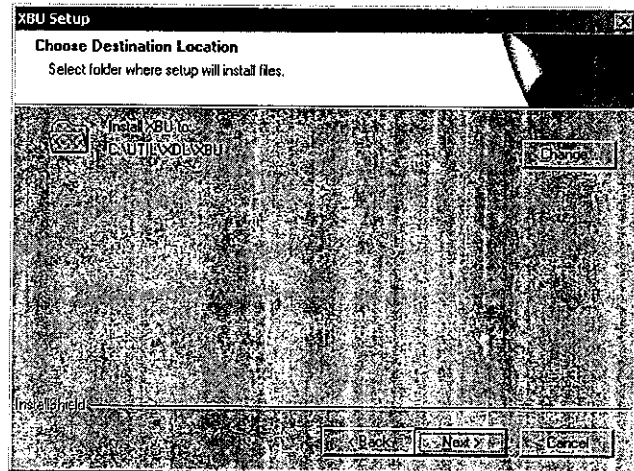
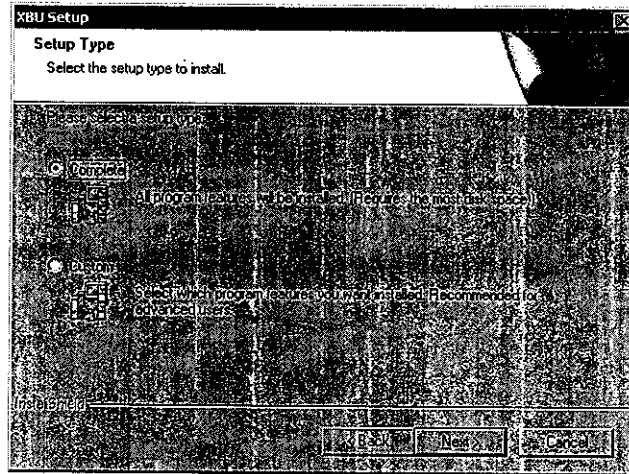
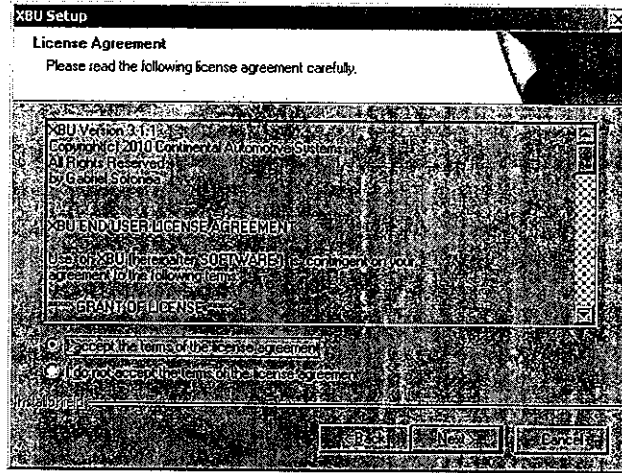
3. Continue with the Setup as illustrated.

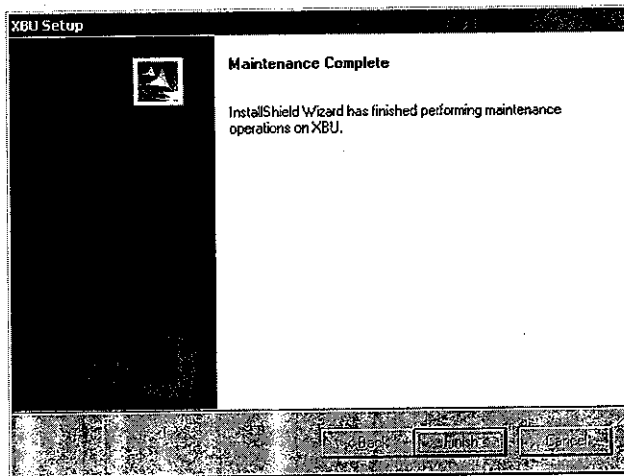
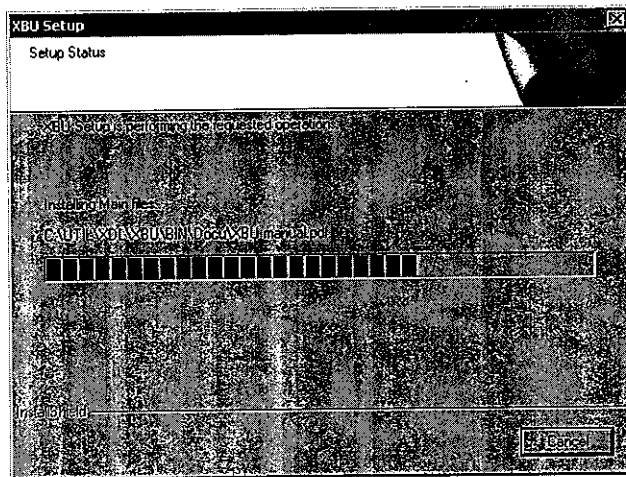
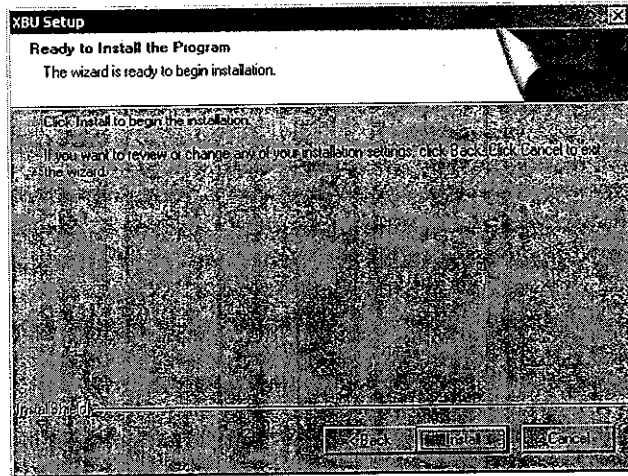
The screenshot shows the 'XBU Setup' window. It features a dark background with a small icon on the left. The text reads:

Wellcome to the InstallShield Wizard for XBU  
 3.1.9.150

The InstallShield® Wizard will install XBU on your computer. To continue, click Next.

At the bottom of the window, there are three buttons: 'Back', 'Next >>', and 'Cancel'.





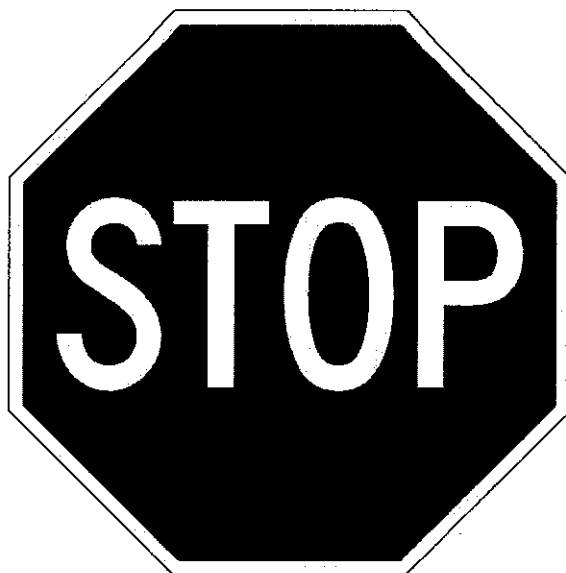
After installation the following icon will appear on the desktop:



NOTE: If this icon does not appear, Uninstall and reinstall the application software.

**Proceed to the A0G Technical Instructions for the vehicle reprogramming procedure.**

**TECHNICAL INSTRUCTIONS**  
**FOR**  
**SAFETY RECALL A0G**  
**SKID CONTROL ECU CALIBRATION UPDATE**  
**2003 MODEL YEAR SEQUOIA**



### **Important Note 1:**

**Before performing this repair you must have the “2003 Sequoia VSC Calibration Update Application” installed on your Techstream Toughbook.**



- 1. Click to download and read the application installation instructions.  
NOTE: You must be a certified technician to access the application.**

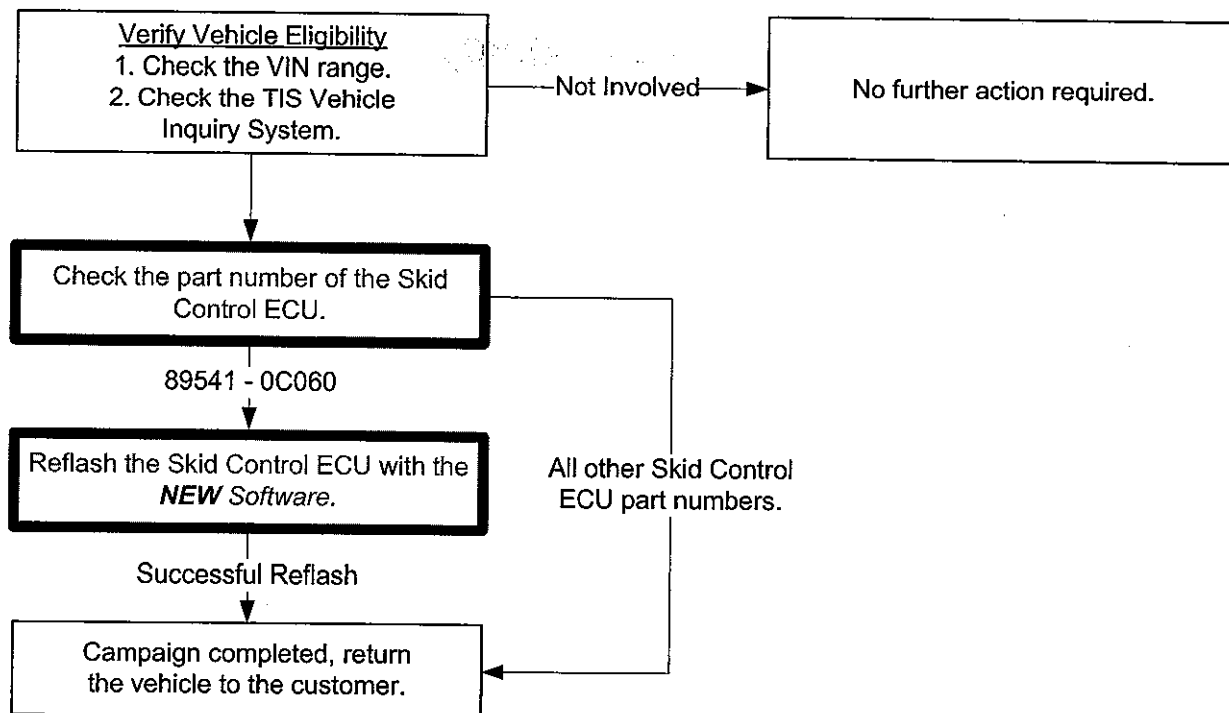
### **Important Note 2:**

**This procedure also requires the use of a custom Techstream cable to connect and reprogram the Skid Control ECU.**

- 2. You will not be able to reprogram the Skid Control ECU with the standard cable.**



## I. OPERATION FLOWCHART



## II. IDENTIFICATION OF AFFECTED VEHICLES

### A. AFFECTED VIN RANGE

Model	WMI	Year	VIN Range	
			VDS	Range
Sequoia	5TD	2003	BT44A	S101211 - S187555
			BT48A	S099426 - S187569
			ZT34A	S100033 - S187571
			ZT38A	S100343 - S187568

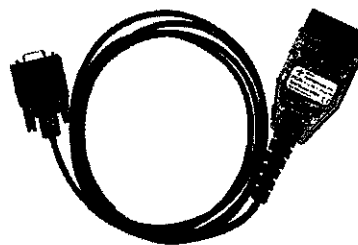
#### NOTE:

- Check the TIS Vehicle Inquiry System to confirm the VIN is involved in this Safety Recall, and that the campaign has not already been completed prior to dealer shipment or by another dealer.
- TMS warranty will not reimburse dealers for repairs conducted on vehicles that are not affected or were completed by another dealer.

## III. PREPARATION

### A. TOOLS & EQUIPMENT

- Techstream Panasonic Toughbook. (Windows XP only) with A0G application software installed.
- GR8 Battery Diagnostic Station, if unavailable, the PSC Power Supply Charger / Maintainer (MTRPSC550SKT) may be used.
- A0G-CABLE (Special DLC3 to RS232 Connector) ⇒

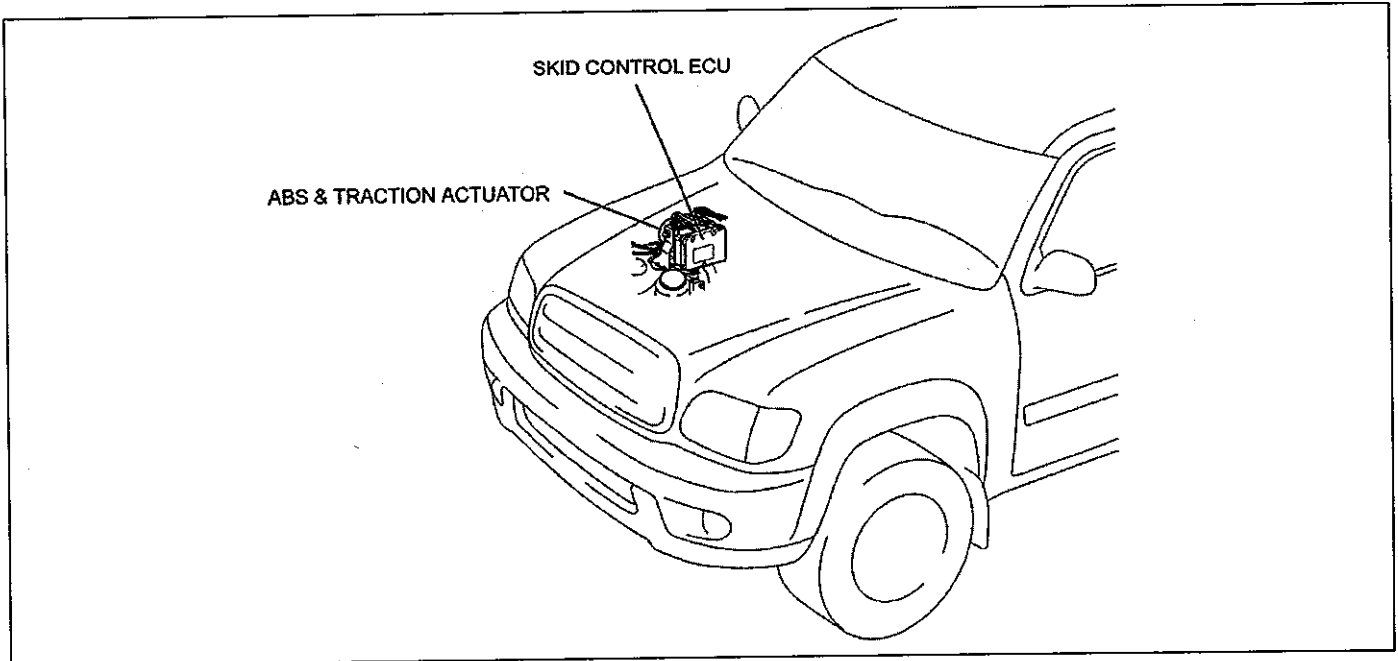


### B. PARTS

- No parts are required.

#### IV. BACKGROUND

On certain 2003 Model Year Toyota Sequoia vehicles, the center position of the Steering Angle Sensor (SAS) may not be stored correctly due to improper logic of the Skid Control ECU programming. If this occurs, in most cases the VSC/TRAC warning light will illuminate. However, in limited situations the Vehicle Stability Control (VSC) system could activate at low speed (approximately 9 mph) for a few seconds after acceleration from a stopped position, and the vehicle may not accelerate as quickly as the driver expects.

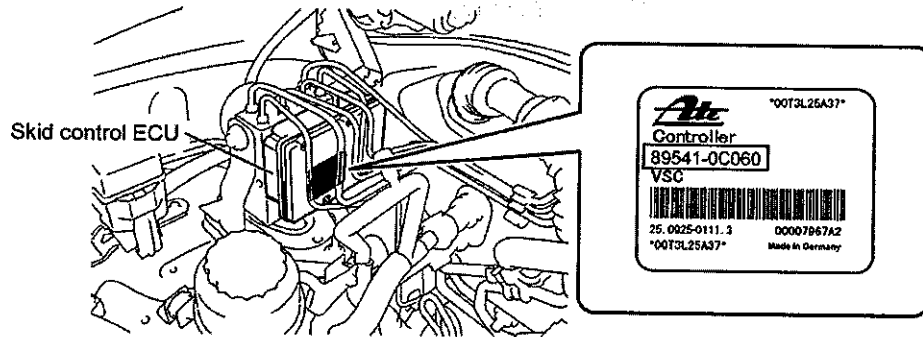


#### Prevent Skid Control ECU Damage During Reprogramming:

- Do NOT allow the Techstream to shut off during reprogramming, keep it plugged in to an AC power supply.
- Do NOT close the application software window during reprogramming.
- Do NOT turn the ignition off during reprogramming.

## V. WORK PROCEDURE

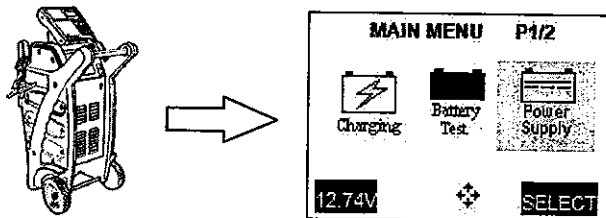
### 1. CHECK THE PART NUMBER OF THE SKID CONTROL ECU



SKID CONTROL ECU PART NUMBER	WORK CONTENTS
89541-0C060	Reprogram the skid control ECU
All other Skid Control ECU part numbers	Vehicle does NOT require reprogramming

### 2. VEHICLE PREPARATION

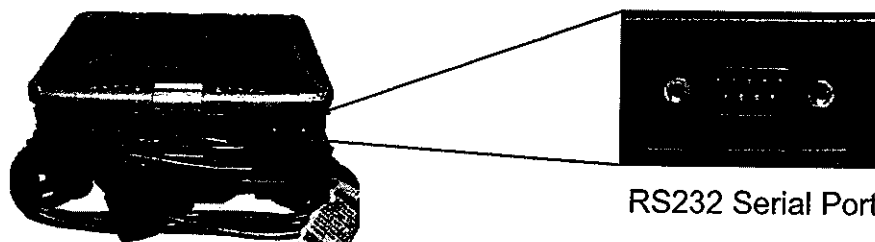
- Check for any preexisting VSC codes in the Skid Control ECU memory.
  - If DTC C1231, C1247, C1310 exists you may proceed with this procedure.
  - If any other VSC codes exist except for DTC C1231, C1247, C1310 troubleshoot according to the repair manual before proceeding.
- Confirm the vehicle/ignition is off.**
- Open the hood and ensure the engine compartment temperatures do not exceed 212° F.
- Connect the GR8 Battery Diagnostic Station to the vehicle and select Power Supply Mode.



#### NOTE:

- The GR8 Battery Diagnostic Station **MUST** be used in Power Supply Mode to maintain battery voltage at 13.5 volts while flash reprogramming the vehicle.
- For details on how to use the GR8 Battery Diagnostic Station, refer to the GR8 Instruction Manual located on TIS, *Diagnostics – Battery*.
- If the GR8 Battery Diagnostic Station is unavailable, the PSC Power Supply Charger / Maintainer (MTRPSC550SKT) may be used.

- Using the A0G-CABLE connect one side to the RS232 Serial Port on the Techstream and the other side to the DLC3 connector on the vehicle.



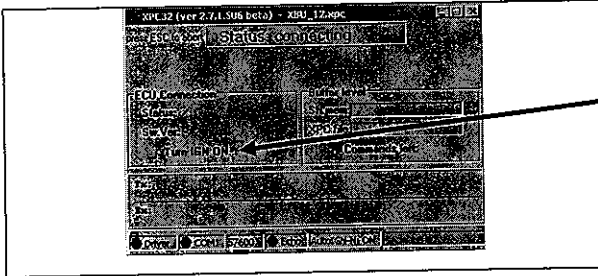
### 3. SKID CONTROL REPROGRAMMING



- Do NOT apply any electrical load while reprogramming. (i.e. audio, A/C, defroster...)
- Do NOT touch the mouse buttons / touch screen / or keyboard after the reprogramming has started until it completes.



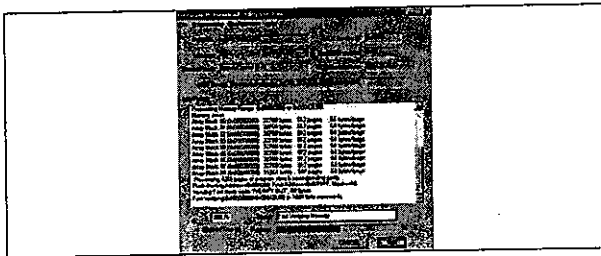
a) Double click this icon from the desktop.



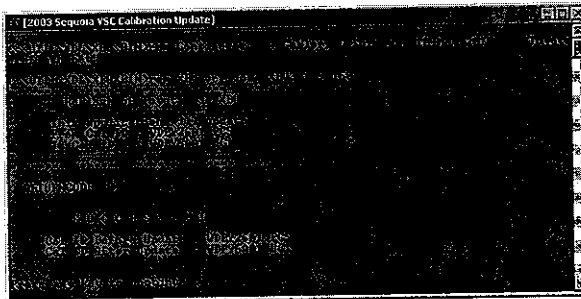
b) Turn the ignition on when prompted: **Turn Ignition ON**

**NOTE: Failure to turn on the ignition in a timely manner will cause the application to error and time-out.**

**NOTE: To prevent ECU damage, keep the ignition ON until the reprogramming is complete.**



c) Wait approximately 6-7 minutes until the reprogramming completes.



- d) A green screen will indicate the completion of the reprogramming or if the reprogramming has already been completed.
- e) Press any key to continue/close the reprogramming window.

**NOTE: If the screen turns RED or BLACK an error has occurred! Immediately skip to the appendix for additional instructions.**

### 4. CONFIRM VEHICLE CONDITION AFTER REPROGRAMMING THE SKID CONTROL ECU

- a) Turn off the ignition.
- b) Disconnect the GR8 Battery Diag. Station or PSC Power Supply Charger/Maintainer (MTRPSC550SKT).



Do NOT restart the vehicle until you have disconnected the GR8 from the vehicle.

- c) Start the vehicle and confirm the ABS warning light turns off.

### 5. CHECK FOR DTC CODES

- a) Connect the Techstream to the DLC3.
- b) Confirm NO new Skid Control DTC's have occurred.

#### NOTE:

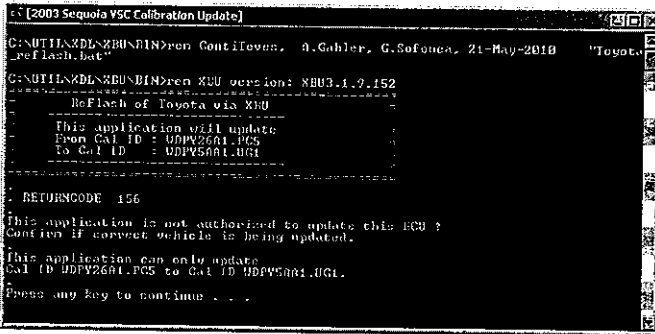
If any Pending, Current, and/or History DTCs are set, troubleshoot according to the repair manual.

### 6. TEST DRIVE THE VEHICLE AND INSPECT FOR ANY PROBLEMS

- CAMPAIGN COMPLETE -

## VI. APPENDIX

Only refer to this appendix if you have received a red or black error screen after attempting to reprogram the Skid Control ECU.

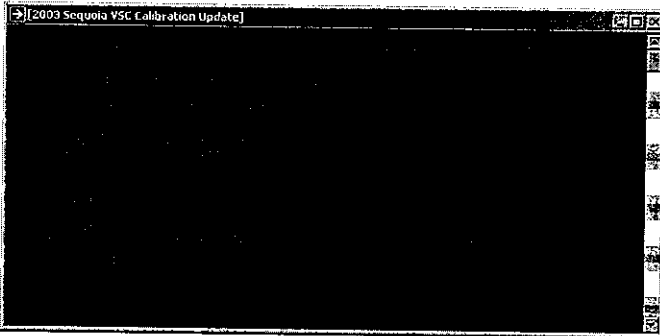


```
[2003 Sequoia VSC Calibration Update]
C:\NTI\KDL\REUNDIN>ren ConfIeven. 3.Gabler, G.Sofouca, 21-May-2010 "Toyota
_reflash.bat"
C:\NTI\KDL\REUNDIN>ren XBU version: XBU3.1.9.152
-----
ReFlash of Toyota via XBU
-----
This application will update
From Cal ID : UDPV26A1.PCS
To Cal ID : UDPV58A1.UGI
-----
RETURNCODE 156
This application is not authorized to update this ECU !
Confirm if correct vehicle is being updated.
This application can only update
CAL ID UDPV26A1.PCS to Cal ID UDPV58A1.UGI.
Press any key to continue . . .
```

**RETURNCODE 156: Wrong Calibration ID Number:**

**Cause:**

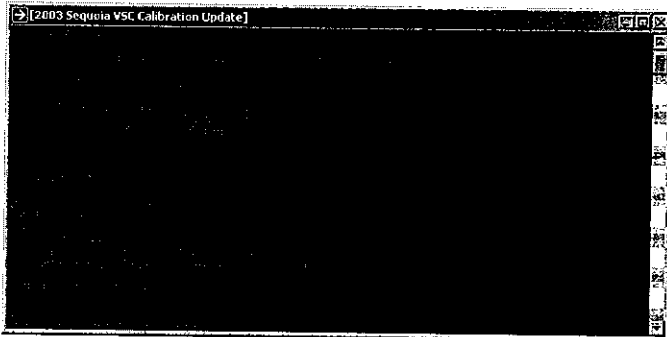
This Skid Control ECU is not part of this safety recall.



```
[2003 Sequoia VSC Calibration Update]
```

**RETURNCODE 2222: Software Corrupt**

Ensure you have Windows XP admin rights.  
Uninstall and reinstall the software.



```
[2003 Sequoia VSC Calibration Update]
```

**RETURNCODE 226: Connection time out.**

Proceed with the Troubleshooting Chart on the next page:

# RETURNCODE 226 Troubleshooting Chart

