

**RECALL OF MIRAGE XTREME  
SNOWMOBILE TRAILERS**

PICTURE EXHIBIT ONE (1)

*FAILURE EXAMPLE*



*FAILURE EXAMPLE*



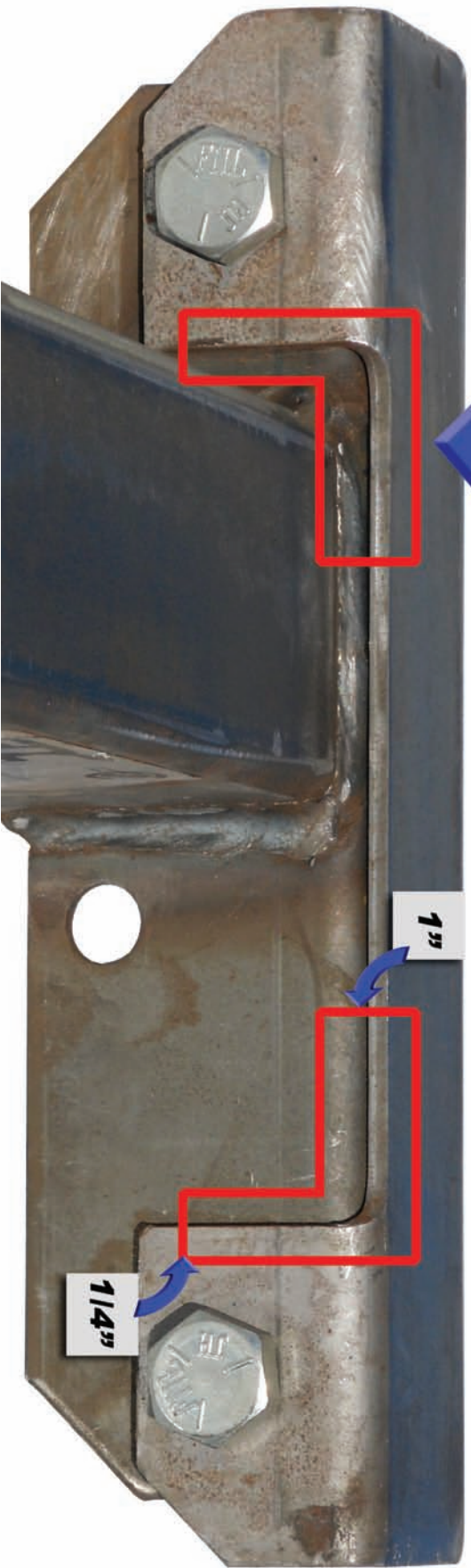
*FAILURE EXAMPLE*



Torsion axle bracket repair;

1. Lift trailer and safely support trailer on jack stands.
2. Remove tires and inspect upper and lower axle mounting brackets for cracks or damage.
3. With a wire brush, clean area where upper and lower brackets meet in weld area shown on drawing. Be sure to clean all paint, dirt and debris from area at least 1" from all new weld joints.
4. Clean around new weld area at the front and rear ends of the brackets.
5. Weld approximately 1 ½" horizontally and vertically from corners of upper bracket as shown, being careful not to apply heat to the axle beam.
6. Weld the ends of the upper and lower brackets together using 1 ½" x 1 ½" "L-weld"
7. After welds cool sufficiently, apply 2 coats of quality primer and 2 coats of quality enamel paint.

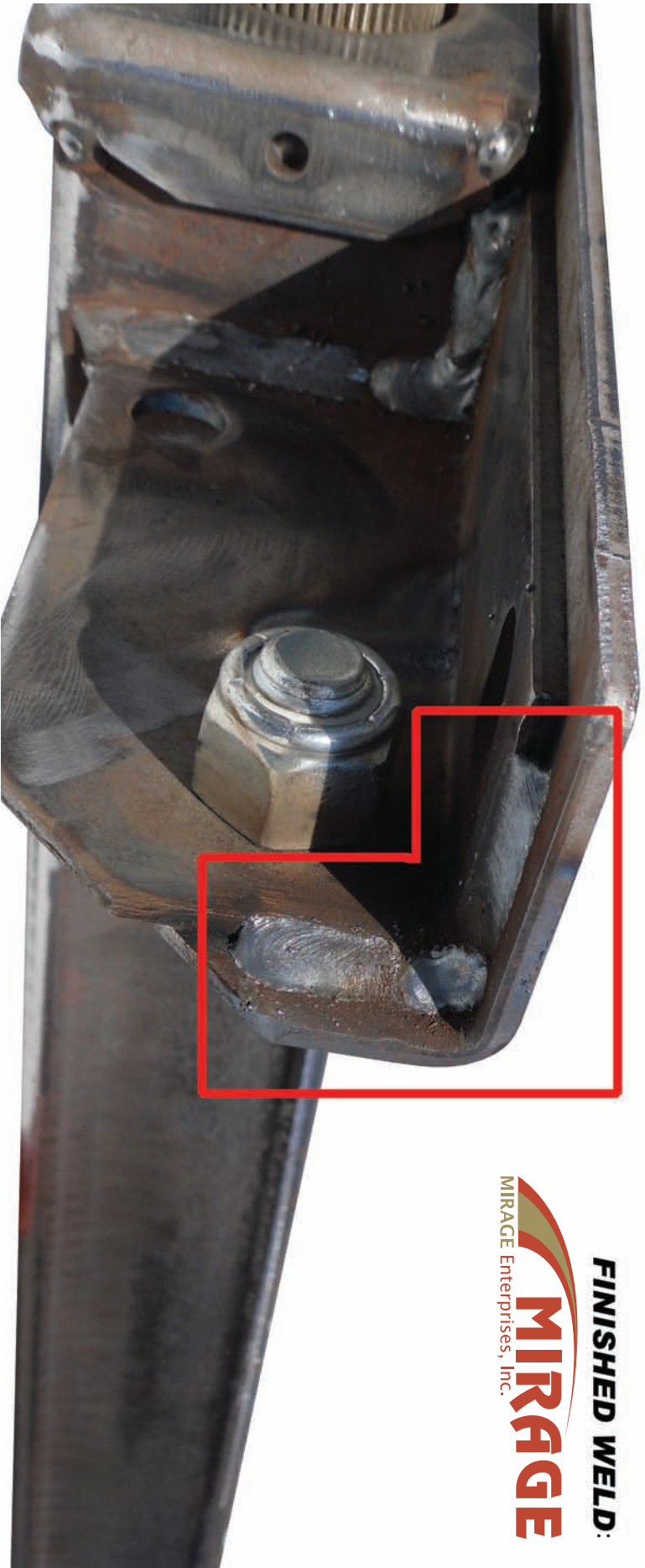
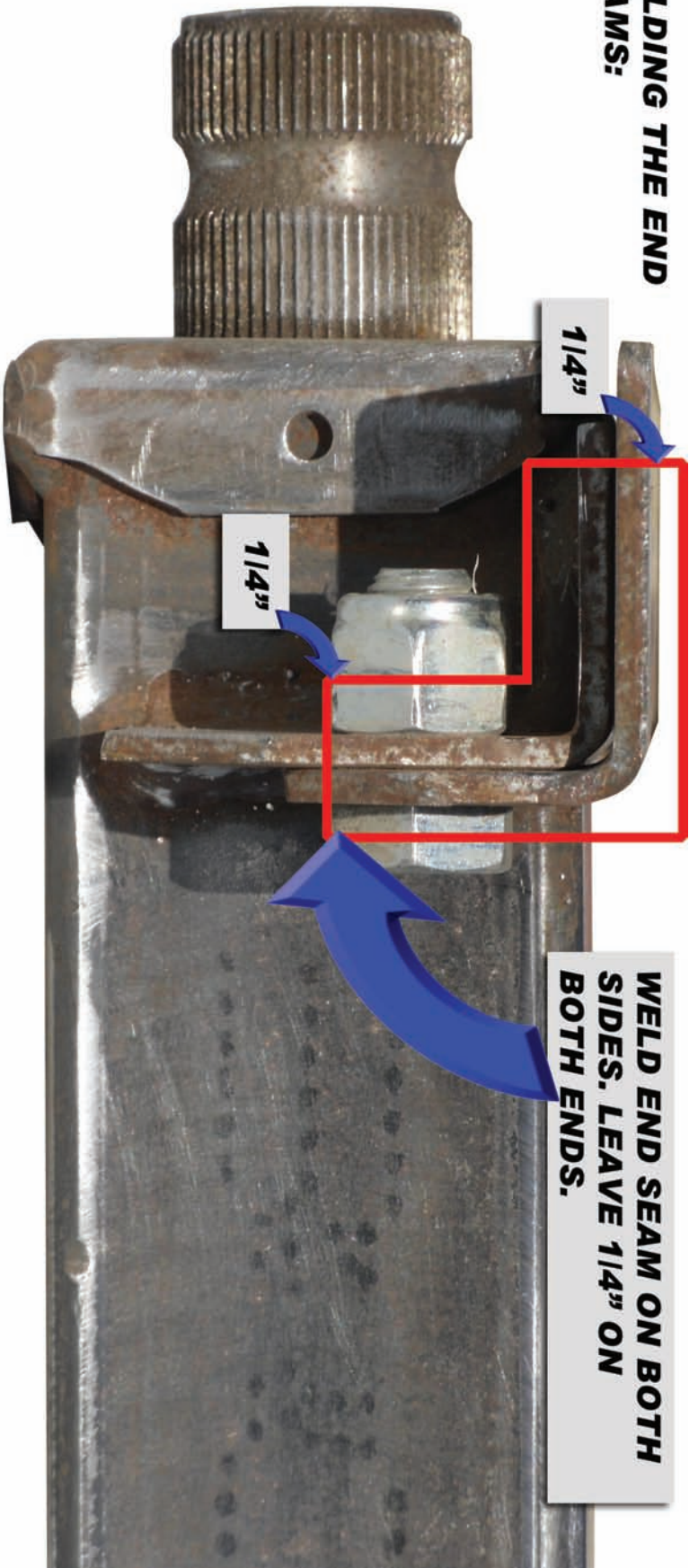
**BEGIN WELD 1/4" FROM BOTTOM  
CONTINUE WELD 1" ACCROSS  
THE TOP ON BOTH SIDES.**



**FINISHED WELDS:**



**WELDING THE END SEAMS:**

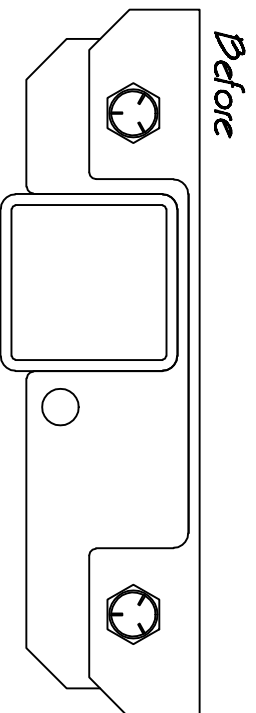


**FINISHED WELD:**

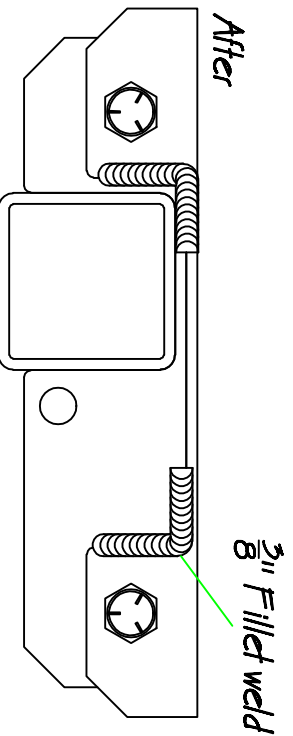


MIRAGE Enterprises, Inc.

*View from inside looking out*



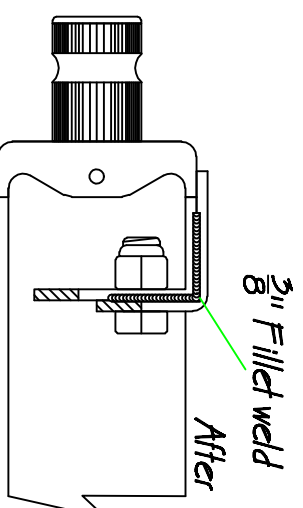
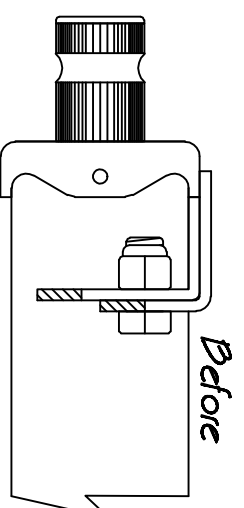
*Front of trailer*



*Instructions:*

*1. Weld upper bracket to lower bracket at corners as shown with  $\frac{3}{8}$ " fillet weld.*

*View from front or rear*



*2. Weld upper bracket to lower bracket at ends of bracket as shown with  $\frac{3}{8}$ " fillet weld.*

*Mirage Trailers Inc.*

*Revised 03-25-2010*

*Drawn by: DW*

*Torsion Axle bracket repair*

*Materials Required*

*None. Weld only*