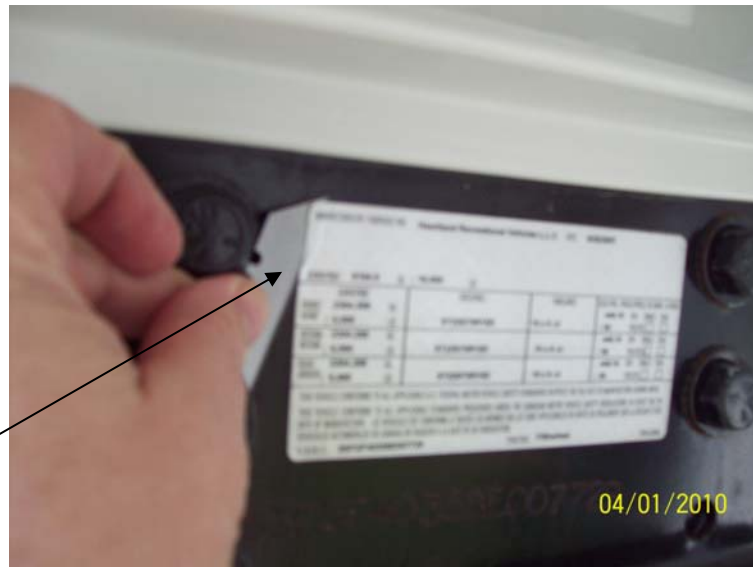


# HOW TO INSTALL THE REPLACEMENT FEDERAL ID LABEL ON YOUR CYCLONE



- STEP 1. Locate the ID label on your RV; it will be located on the off door side or roadside, either on the sidewall or the hitch plate.



- STEP 2. Using a razor blade or sharp putty knife peel up just the corner of the old ID label.



- STEP 3. Grasp the corner of the old ID label, being sure you have the whole label pull all the way off till the label is removed.





- STEP 6. Attach the New ID label to the sidewall of the RV; use one of these locations for the location of the ID label.