



# HYUNDAI Technical Service Bulletin

Subject <b>FRONTDOORLATCHINSPECTION (CAMPAIGN 096)</b>	Group CAMPAIGN		
	Number 10-01-016		
	Date MARCH, 2010		
Model 2011MY SONATA (YF)			
<b>CIRCULATE TO:</b>	<input type="checkbox"/> GENERAL MANAGER	<input checked="" type="checkbox"/> PARTS MANAGER	<input checked="" type="checkbox"/> TECHNICIAN
<input checked="" type="checkbox"/> SERVICE ADVISOR	<input checked="" type="checkbox"/> SERVICE MANAGER	<input checked="" type="checkbox"/> WARRANTY MGR	<input type="checkbox"/> SALES MANAGER

**IMPORTANT: DEALERS MUST PERFORM THIS CAMPAIGN ON ALL AFFECTED VEHICLES IN DEALER STOCK AND WHENEVER AN AFFECTED VEHICLE IS IN THE SHOP FOR ANY MAINTENANCE OR REPAIR.**

**IMPORTANT: WHEN A VEHICLE ARRIVES AT THE SERVICE DEPARTMENT, ACCESS HYUNDAI MOTOR AMERICA'S "WARRANTY VEHICLE INFORMATION" SCREEN VIA WEBDCS TO IDENTIFY OPEN CAMPAIGNS.**

## DESCRIPTION:

- This bulletin describes the procedure for the front latch assembly inspection and if necessary, replacement.

## AFFECTED VEHICLES:

Model: 2011MY SONATA (YF)

Applicable vehicle production date range: December 11, 2009 through February 15, 2010.

## PARTS INFORMATION:

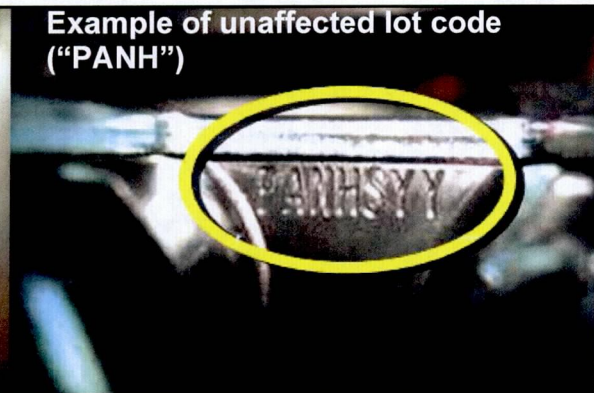
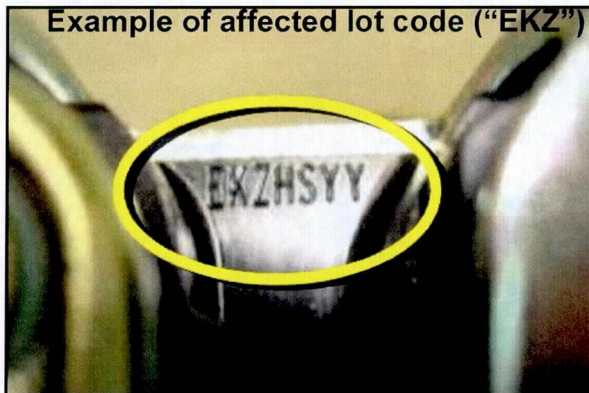
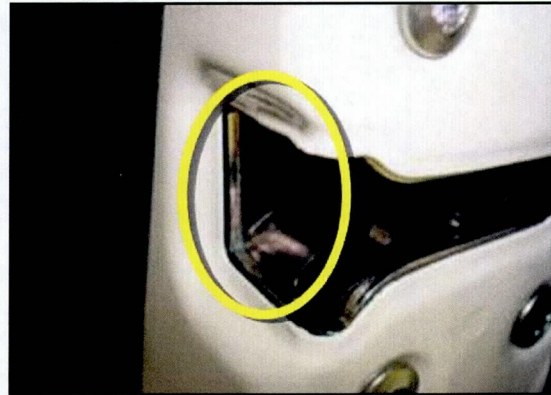
PART NUMBER	PART DESCRIPTION	PART QTY
N/A	Foam Tape (included in Latch Assy package)	1
81310-3S010	Latch Assy-Front Door (LH)	1
81320-3S020	Latch Assy-Front Door (RH)	1



## SERVICE PROCEDURE:

### INSPECTION

1. Open the left front door and inspect the latch lot code stamped on the inner latch assembly.



2. If the latch lot code begins with the following three (3) characters:
  - EJ (any third letter or any third number)
  - EK (any third letter or any third number)
  - ELA
  - ELB
  - ELC
  - ELD
  - ELE
  - ELF

proceed to the REPLACEMENT section.

3. Repeat steps 1 & 2 for the right front door.





# HYUNDAI Technical Service Bulletin

Group	CAMPAIGN
Number	10-01-016

4. If the latch lot code indicates replacement is not necessary for both (RH) and (LH), an inspection claim should be filed.

**NOTE: Vehicles with latch lot codes not listed in step 2 can be sold after the lot code information is entered into an RO as requested in step 4.**

## REPLACEMENT

1. Using a trim tool, remove the quadrant inner cover (A).

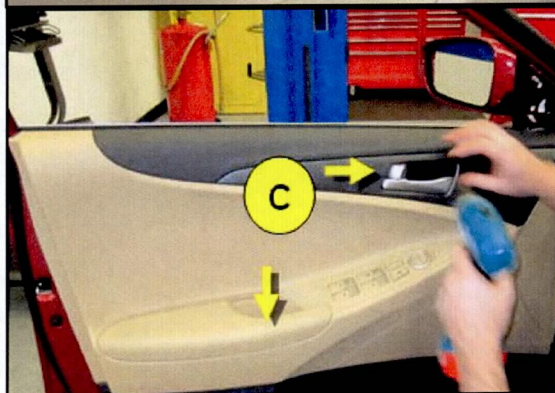
**CAUTION: Be careful not to damage/scratch trim or paint**



2. Remove the inside handle cover (B).

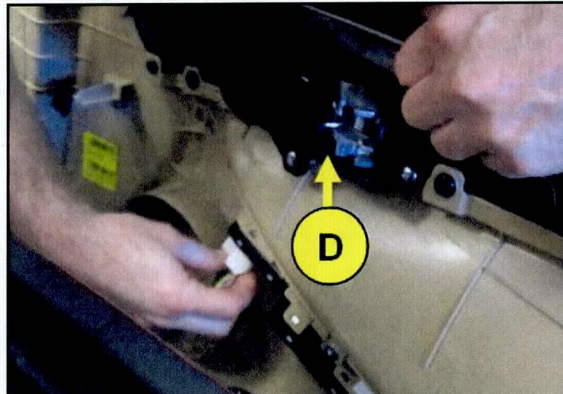


3. After removing the (2) mounting screws (C), pull the front door trim away from the door frame.



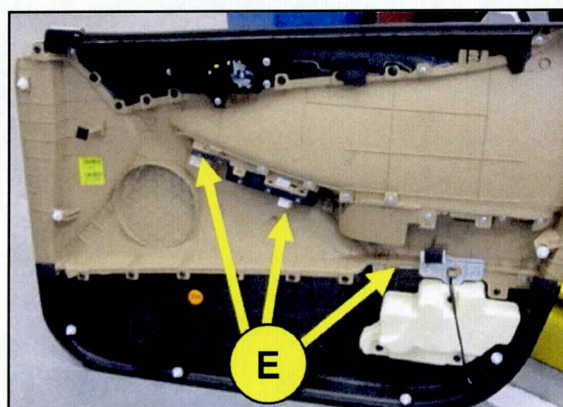


4. Remove the inside handle cage (D).

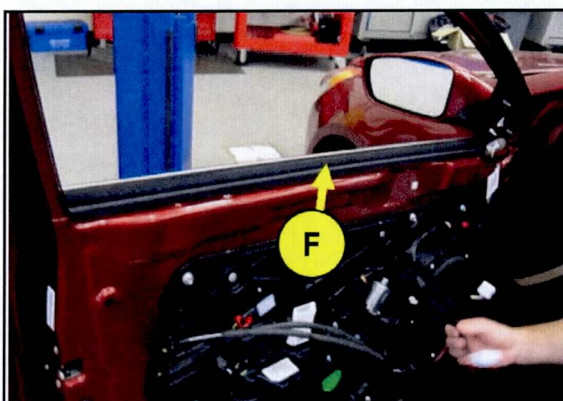


5. Disconnect the connectors (E), and then completely remove the front door trim.

**CAUTION: Be careful not to damage/scratch the door trim**



6. Remove the front door belt inside weather strip (F).



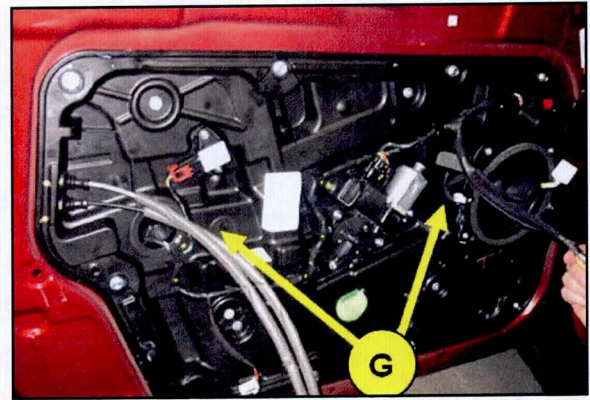




# HYUNDAI Technical Service Bulletin

Group	CAMPAIGN
Number	10-01-016

7. Remove the (2) glass mounting plugs (G).



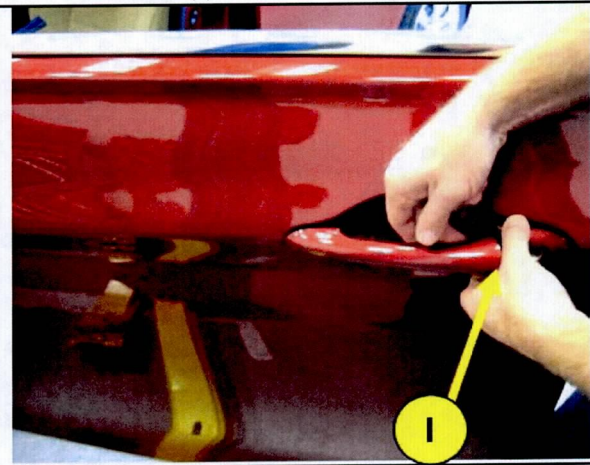
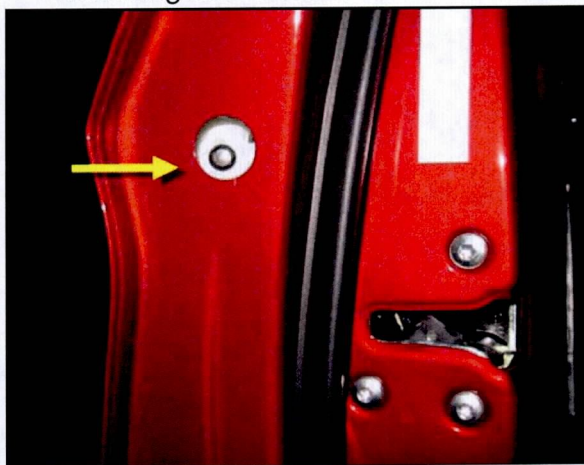
8. Temporarily reconnect the window switch assembly (not necessary to remove the switch from door trim) to the door harness and raise or lower the window until the bolts are accessible through the glass mounting plug holes. When properly positioned, disconnect the switch assembly from the door harness.

9. Loosen window bolts and slide the glass up and out of the door.

**NOTE: Do not fully remove window bolts**

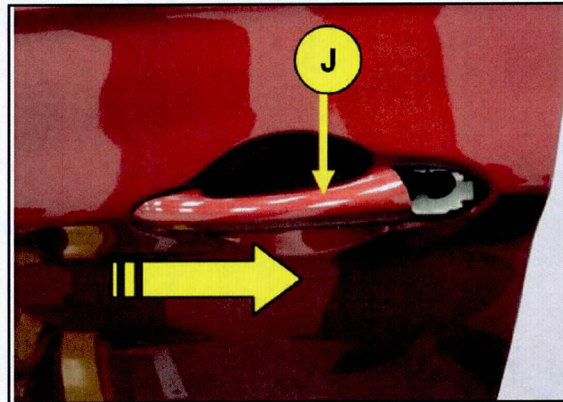
**NOTE: Tightening torque for window bolts: 3.9 ~ 2.9 N.m (0.4 ~ 1.2 kgf.m, 11.8 ~ 8.7 lb-ft)**

10. Remove the outside door handle bolt cover from the door and remove the mounting nut. Then remove the outside handle cover (I).

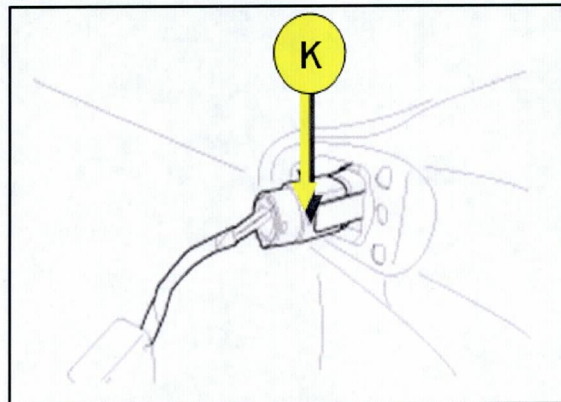




11. Remove the outside door handle (J) by sliding it rearward.

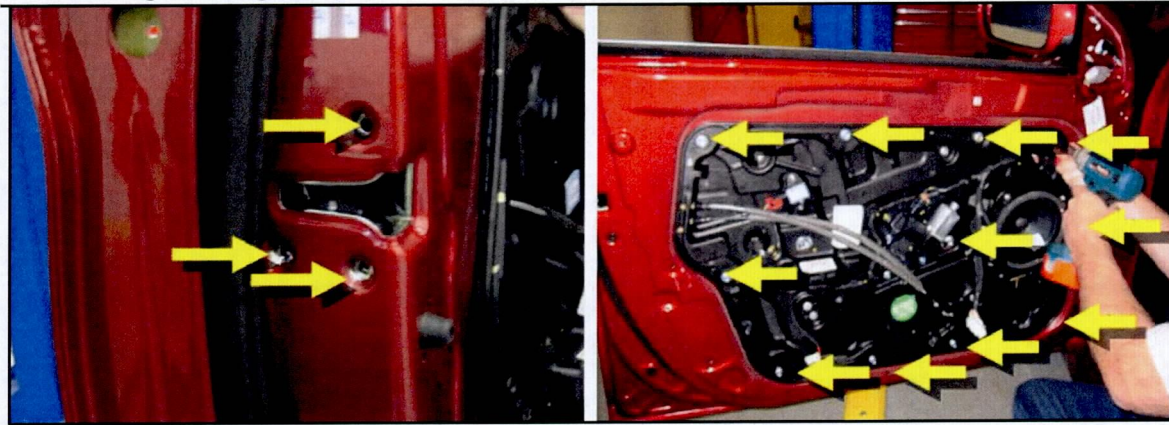


12. Disconnect the connector (K), if equipped.



13. Remove latch mounting screws (3) and remove door module mounting bolts (11).

**NOTE: Tightening torque: 6.9~10.8 N.m (0.7~1.1 kgf.m, 5.1~8.0 lb-ft)**





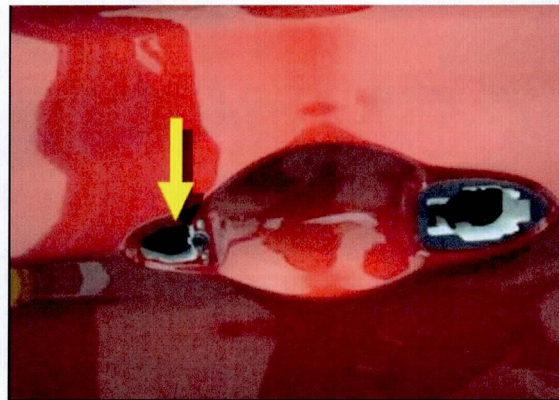


# HYUNDAI Technical Service Bulletin

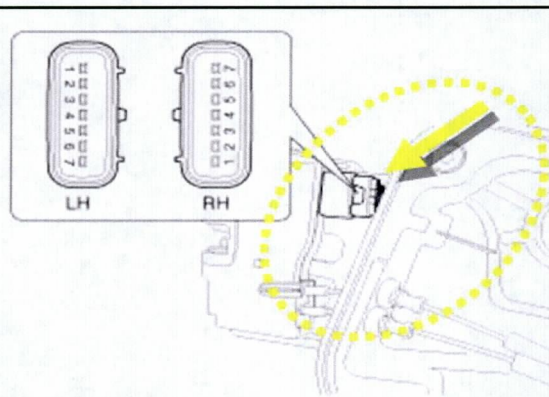
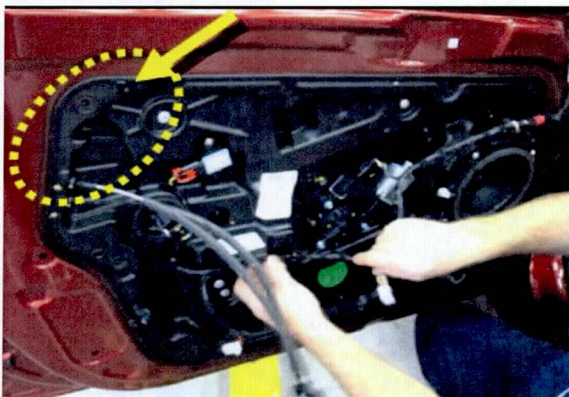
Group	CAMPAIGN
Number	10-01-016

14. Remove the outside handle mounting bracket mounting bolt and carefully remove the outside handle mounting bracket from the latch assy while pulling the door module away from the door frame.

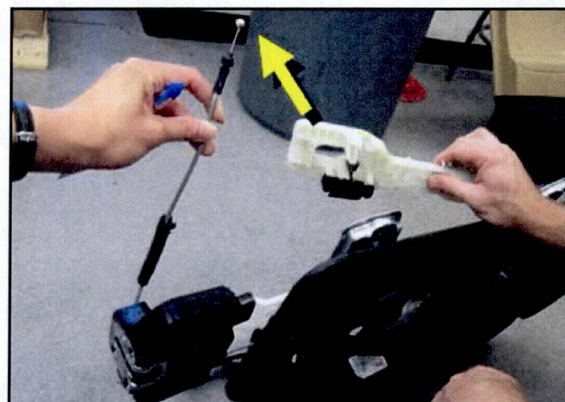
**NOTE: Tightening torque for mounting screw: 0.7~0.5 N.m (0.07~0.1 kgf.m, 1.0~0.7 lb-ft)**



15. Disconnect the 7P connector from the actuator located at the rear inner side of the door module.

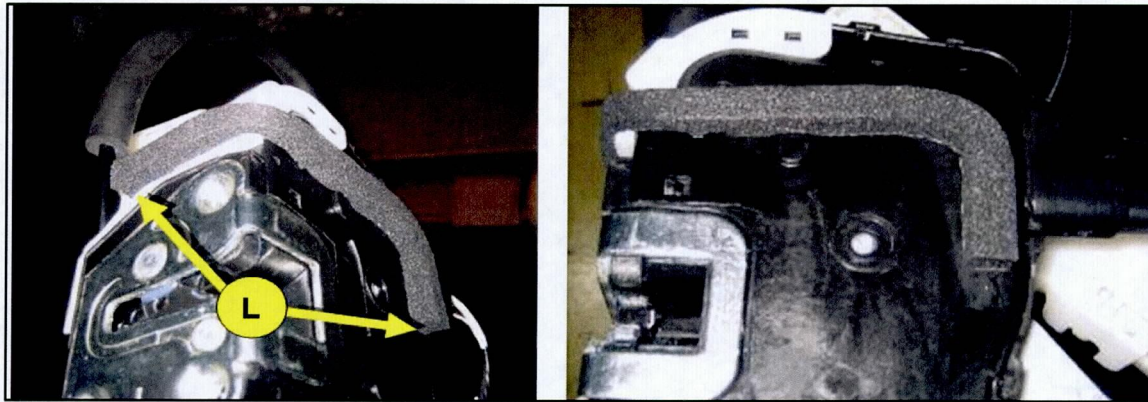


16. Unhook the door latch from the outside handle mounting bracket and remove the door latch from the door module.





17. Apply the foam tape (L) to the new latch assembly starting at the edge of the support bracket and along the side of the latch assembly.



18. Reinstall in reverse order of removal.
19. Confirm door lock, power window and door handle operation.

**WARRANTY INFORMATION:**

OP CODE	DESCRIPTION	RATE
10BA09R0	Latch Assy-Front Door (LH)	0.6
10BA09R1	Latch Assy-Front Door (Both Sides)	1.0
10BA09R2	Latch Assy-Front Door (RH)	0.6
10BA09I0	Inspection	0.2

**NOTE:** Submit claim using the Campaign Claim Entry Screen.