

Micro Bird

Recall Campaign

TITLE: 10-035-SEC (second leg)
TO: Micro Bird American Customers
PRODUCTS: G5 minibus 2006 to 2010
School bus model with standard CEW 39" & 45"
seat & standard aluminum floor
FROM: Micro Bird Service & Warranty
Department

PLANNING INFORMATION

Description

This document contains procedures to add a leg to a standard CEW 39" & 45" seats installed at a specific location above an aluminum wheel well floor section. This second modification is necessary to meet the CMVSS 222 rearward push requirement.

Compliance

Claim under warranty must be sent to C.E. White Company within 45 days of the repair date.

Manpower

We allow approximately **.7 hour** per seat.

Material Availability

Part number	Description	Qty/seat
31E0015	CEW 6 HOLES STD LEG	1
81A04C112 (Micro-Bird part number) or equivalent	HEX. BOLT GR5 C 1/4-20 X 1 3/4	1
81A06C112 (Micro-Bird part number) or equivalent	HEX BOLT GR5 ZC 3/8-16 X 1 3/4	6
81D07F100 (Micro-Bird part number) or equivalent	HEX BOLT GR8 ZC 7/16-20 X 1	2
82D07F (Micro-Bird part number) or equivalent	HEX FLANGE LOCK NUT GR G ZC 7/16-20	2
82R06C (Micro-Bird part number) or equivalent	HEX FLANGE LOCK NUT GR G ZC 3/8-16	6
82E04C (Micro-Bird part number) or equivalent	HEX NYLON LOCK NUT ZC 1/4-20	1
83A06 (Micro-Bird part number) or equivalent	Washer 3/8	6

MODIFICATION INSTRUCTIONS

Note: It is assumed that all of the procedures required to perform this modification will be done according to professionally accepted standards. It is recommended to read the entire procedure prior to beginning the repairs.

PROCEDURE

Contact the C.E.White warranty representative. They will ship the repair parts and point out which seats need to be modified.

1. Remove the seat cushion. Depending on the seat model year, the seat cushion could be secured with two quarter turn brackets or a self latching device.

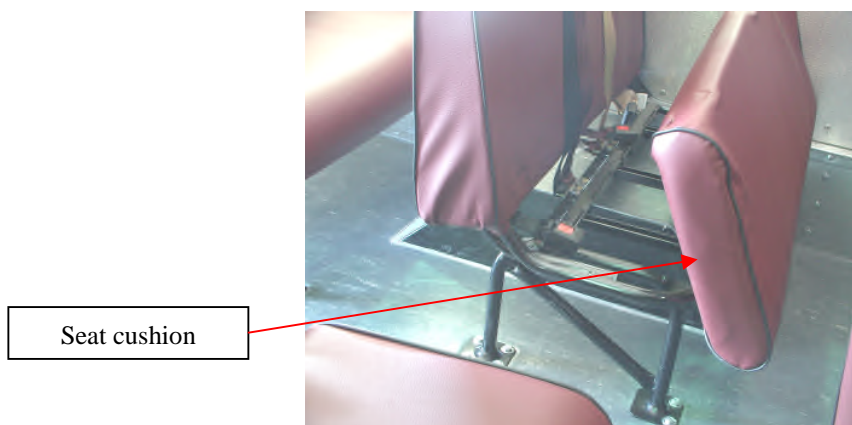


Figure 1: Seat cushion



Figure 2: Quarter turn bracket – seat underneath view



Figure 3: Self latching device – seat underneath view

2. Loose the leg bolts already installed to the frame in way to be able to slide the second leg.

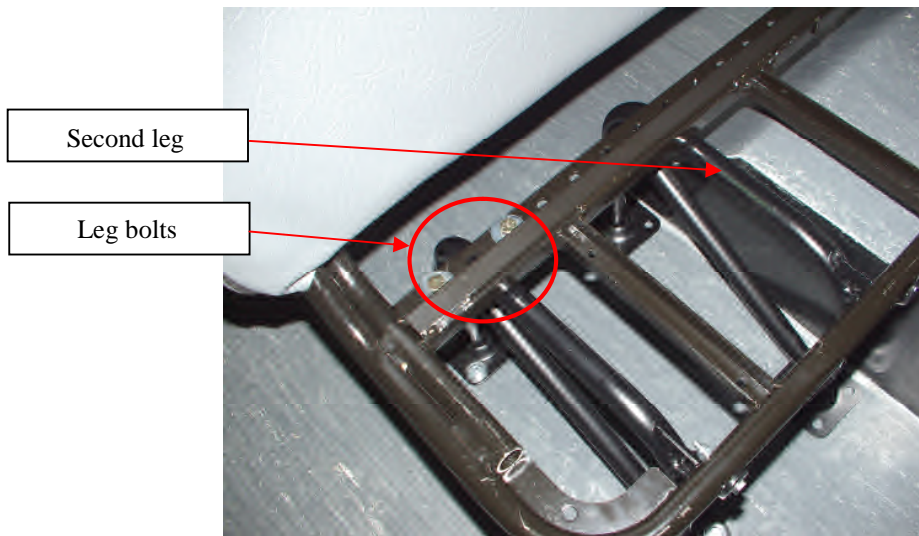


Figure 4: leg bolts- seat top view without the cushion

3. The second leg shall be located in the 12th holes from the wall. The leg foot pads will be applied against the wheel well. If a seat belt is located in this hole, move it in the holes 13th.

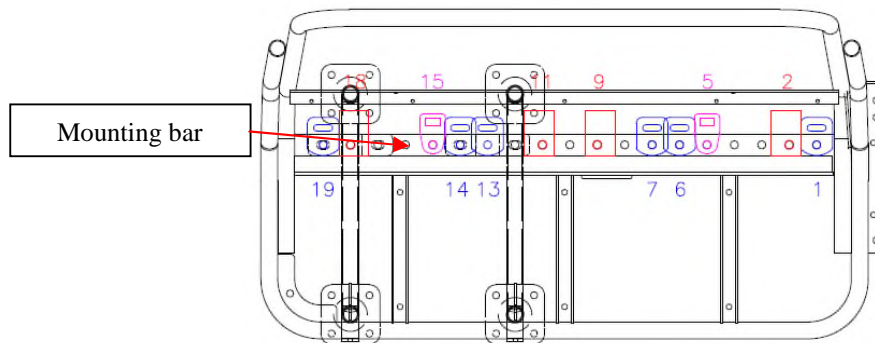


Figure 5: CEW seat 39in with lap belt (blue), UCRA (Orange) & tether (Pink) positions

4. Once the leg is located insert the 7/16 bolts and nuts in the seat frame mounting bar without tightened them.
5. Drill the 3/8diameter holes to the floor in using the leg as a drilling jig. Drill the 1/4 diameter hole in the front of the leg. Insert and torque all the bolts.

Torque values: 1/4-20 = 8lb-ft; 3/8-16 = 20lb-ft; 7/16-20 = 40lb-ft

6. Re install the seat cushion.