

Recall Bulletin 91222FRV



RECALL BULLETIN:
91222FRV

YEAR(S) AFFECTED:
2009, 2010

PRODUCT(S) AFFECTED:
Fiesta,
Terra

MODEL(S) AFFECTED:
34B,
manufactured
from August 28,
2009 through
November 5,
2009

SUBJECT:
Install new
Manufacturer
Federal
Certification
Tag and
Occupant and
Cargo Carrying
Capacity Tag

KEYWORDS:
Manufacturer
Federal
Certification
Tag, Occupant
and Cargo
Carrying
Capacity Tag,
Weight Tag

ISSUE DATE:
January 2010

© 2010 Fleetwood RV, Inc.

The purpose of this Bulletin is to inform Fleetwood dealers of the need to replace the Manufacturer Federal Certification Tag and the Occupant and Cargo Carrying Capacity Tag on Fiesta and Terra Model 34 B motor homes manufactured from August 28, 2009 through November 5, 2009.

CONDITION:

Fleetwood RV, Inc., has discovered that on the identified motor homes, the figures related to the fresh water tank capacity appearing on the Manufacturer Federal Certification Tag and the Occupant and Cargo Carrying Capacity Tag are incorrect. The correct water tank capacity is 50 gallons.

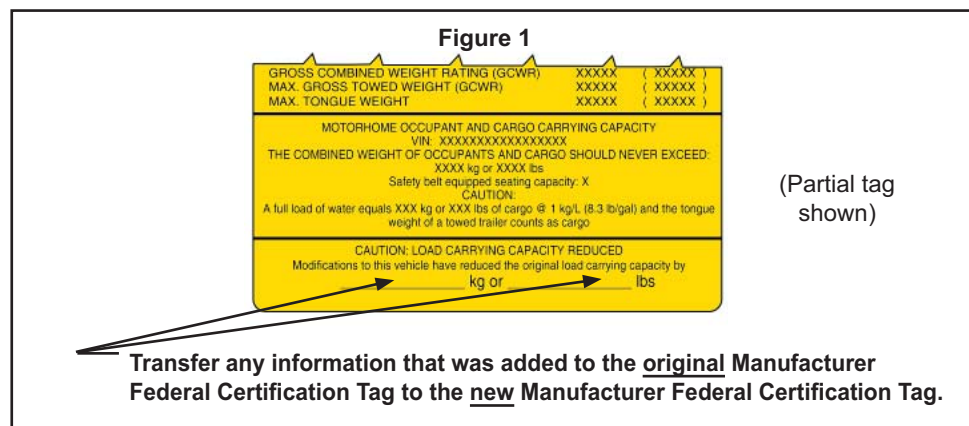
Read this entire document before proceeding.

CORRECTION:

Retail owners of affected motor homes and dealers holding affected motor homes in inventory will receive a package from Fleetwood containing a new and corrected, **serial number specific**, Manufacturer Federal Certification Tag and Occupant and Cargo Carrying Capacity Tag. Verify eligibility by referring to the affected motor home serial numbers listed at the end of this Bulletin before applying new labels.

Important: Be sure the correct replacement Manufacturer Federal Certification Tag and Occupant and Cargo Carrying Capacity Tag are on-hand before proceeding.

1. Locate the original Federal Certification Tag, adhered to the wall behind the driver's seat.
2. Record any additional weight information (if present) that was written on the original Manufacturer Federal Certification Tag due to the addition of options after the motor home was manufactured. (See Figure 1.) Transfer this information to the new Manufacturer Federal Certification Tag using a black, fine point, permanent marker.



This bulletin is supplied for technical information only and is not an authorization for repairs.

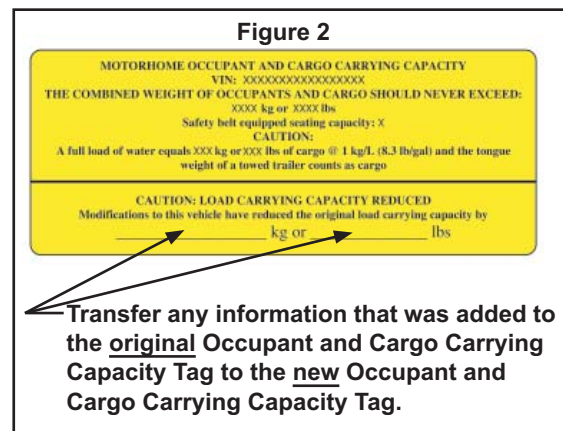
Federal Law (Section 154 of the National Traffic and Motor Vehicle Safety Act of 1966) requires that: If you have received a notice of recall or failure to comply from Fleetwood or any component manufacturer, you must repair or otherwise correct the defects on vehicles remaining in your inventory, according to the notification, before selling or leasing the vehicles. Any vehicle lessor receiving this recall notice must forward a copy of the notice to the lessee within ten days.

"It is impossible to know, evaluate and advise the service trade of all conceivable ways in which service might be done or of the possible hazardous consequences of each way. Accordingly, anyone who uses a service procedure or tool must first assure that neither personal safety nor vehicle safety will be jeopardized by the selected service methods."

3. a) If the original Federal Certification Tag is loose or peeling, remove it and discard. Remove any adhesive residue in the application area using a clean shop cloth slightly dampened with isopropyl alcohol.
- b) If the original Federal Certification Tag is adhered securely in place, use a black permanent marker to deface it.
4. Peel and tear approximately 1" from the top of the adhesive backing of the new Federal Certification Tag. (This will allow control of the application.) Slowly apply the new Tag directly over the original, using your fingers to smooth down newly-applied areas. (If the original Tag was removed in Step 3a, apply the new Tag in the same location as the original.) Continue to remove backing, working from top to bottom, until the entire tag completely adheres to and covers the original tag.

Note: New Federal Certification labels have “tamper-proof” edges and are designed to tear if removal is attempted.

4. Locate the original Occupant and Cargo Carrying Capacity tag affixed to the inside of the entry door of the motor home. Record any additional weight information (if present) that was written on this tag due to the addition of options after the motor home was manufactured. (See Figure 2.) Transfer this information to the new Occupant and Cargo Carrying Capacity tag using a black, fine point, permanent marker. Then, remove and discard the original Occupant and Cargo Carrying Capacity tag.



5. Peel the adhesive backing from the new Occupant and Cargo Carrying Capacity Tag and carefully apply to the entry door in the same location as the original Tag. Use your fingers to smooth down newly-applied areas.

NOTE: It may be helpful to remove a small portion of the backing at a time in order to prevent air bubbles.

PARTS:

Use tags supplied with the Recall mailing. No additional parts are necessary.

TOOLS:

Black, Fine Point, Permanent Marker Clean Shop Cloth Isopropyl Alcohol

WARRANTY LABOR ALLOWANCE:

Use Flat Rate Codes:

Install new Federal Certification Tag and Occupant and Cargo Carrying Capacity Tag

9224 - 11 0.10 hr. Inspected / Not Defective

9224 - 12 0.10 hr. Inspected / Defective/Repaired

This bulletin is supplied for technical information only and is not an authorization for repairs.

Federal Law (Section 154 of the National Traffic and Motor Vehicle Safety Act of 1966) requires that: if you have received a notice of recall or failure to comply from Fleetwood or any component manufacturer, you must repair or otherwise correct the defects on vehicles remaining in your inventory, according to the notification, before selling or leasing the vehicles. Any vehicle lessor receiving this recall notice must forward a copy of the notice to the lessee within ten days.

"It is impossible to know, evaluate and advise the service trade of all conceivable ways in which service might be done or of the possible hazardous consequences of each way. Accordingly, anyone who uses a service procedure or tool must first assure that neither personal safety nor vehicle safety will be jeopardized by the selected service methods."

Recall 91222FRV Affected Unit Serial Numbers

2009 Terra 34B

793B94404051

2010 Terra 34B

793BA4404095

793BA4404096

793BA4404159

793BA4404160

793BA4404161

793BA4404162

793BA4404163

793BA4404212

793BA4404213

793BA4404214

793BA4404218

793BA4404219

793BA4404304

793BA4404305

793BA4404306

2010 Fiesta 34B

794BA4404097

794BA4404098

794BA4404099

794BA4404157

794BA4404158

794BA4404173

794BA4404174

794BA4404181

794BA4404182

794BA4404183

794BA4404307

794BA4404308

794BA4404309

*If you have any questions concerning the Bulletin, contact Fleetwood Dealer Technical Support at:
(800) 816-9825*

Fleetwood Service Literature is available at: www.fleetwoodrvdealers.com

This bulletin is supplied for technical information only and is not an authorization for repairs.

Federal Law (Section 154 of the National Traffic and Motor Vehicle Safety Act of 1966) requires that: If you have received a notice of recall or failure to comply from Fleetwood or any component manufacturer, you must repair or otherwise correct the defects on vehicles remaining in your inventory, according to the notification, before selling or leasing the vehicles. Any vehicle lessor receiving this recall notice must forward a copy of the notice to the lessee within ten days.

"It is impossible to know, evaluate and advise the service trade of all conceivable ways in which service might be done or of the possible hazardous consequences of each way. Accordingly, anyone who uses a service procedure or tool must first assure that neither personal safety nor vehicle safety will be jeopardized by the selected service methods."