



# RECALL CAMPAIGN BULLETIN

Reference:

NTB10-071a

Date:

August 25, 2010

## VOLUNTARY SAFETY RECALL CAMPAIGN EQUIPMENT / SERVICE PARTS SUSPENSION LOWER LINK

This bulletin has been amended. The lower link inspection has been clarified.  
Please discard previous versions of this bulletin.

**CAMPAIGN ID #:** PC049  
**NHTSA #** 10E-019  
**APPLIED VEHICLES:** 2004 - 2010 Armada (TA60)  
2004 - 2010 Titan (A60)  
2005 - 2010 Frontier (D40)  
2005 - 2010 Pathfinder (R51)  
2005 - 2010 Xterra (N50)

### INTRODUCTION

Nissan is conducting a voluntary safety recall campaign for suspension lower link service parts that fit MY 2004 through 2010 Armada and Titan and MY 2005 through 2010 Xterra, Pathfinder, and Frontier vehicles. A small number of suspension lower link service parts sold between November 25, 2009 and May 14, 2010 may have welds that are out of specification.

Applied vehicle owners will be asked to take their vehicle to the dealer if a lower link on their vehicle was replaced between November 25, 2009 and May 14, 2010 or if they do not know whether a lower link was replaced during that time.

### DEALER RESPONSIBILITY

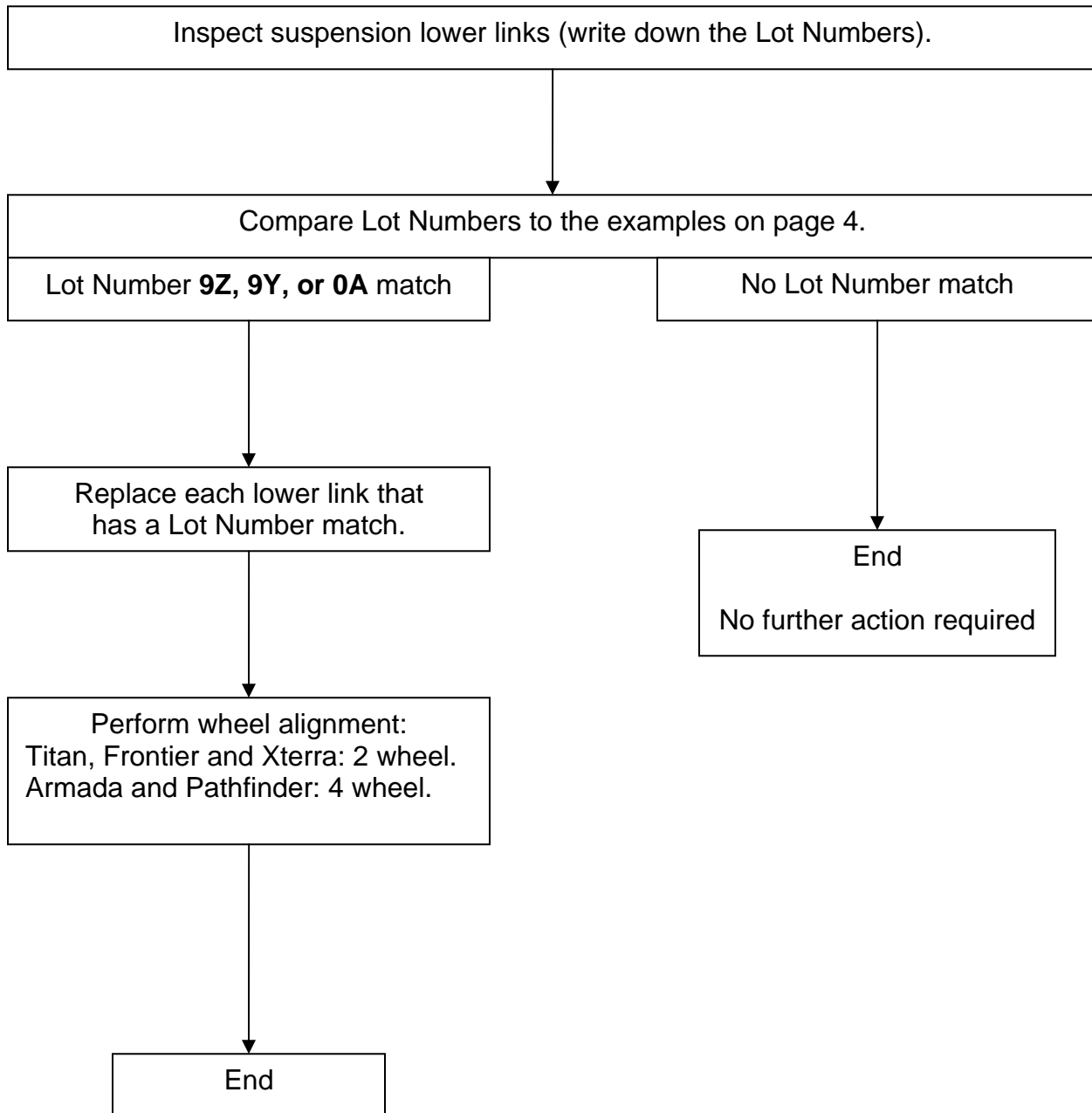
If a vehicle owner believes his or her vehicle may have received affected suspension lower link service parts, it is the dealer's responsibility to inspect and, if necessary, replace the lower links pursuant to the instructions on this bulletin.

Applied Vehicles with the original factory installed lower links are not subject to this service parts recall campaign; however, some 2010 MY Applied Vehicles may be subject to the Suspension Lower Link vehicle recall campaign (PC047). Please review Service Comm to confirm campaign eligibility.

### IDENTIFICATION NUMBER

Nissan has assigned identification number PC049 to this campaign. This number must appear on all communications and documentation of any nature dealing with this campaign.

## REPAIR OVERVIEW



## SERVICE PROCEDURE

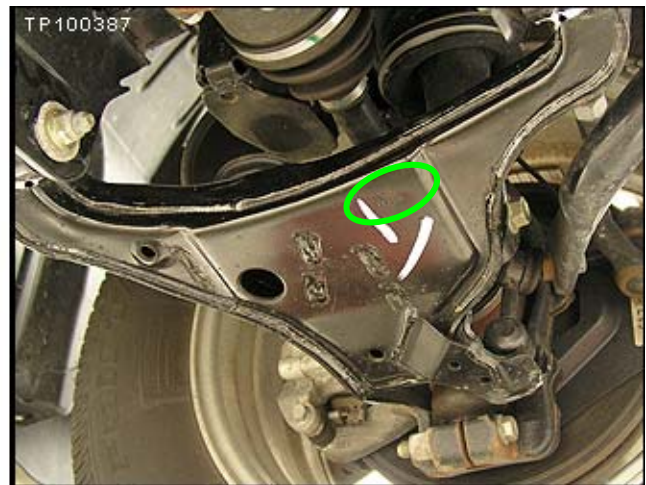
### Lower Link Inspection

1. Raise the vehicle.
2. Locate and write down the “Lot Number” stamped on the bottom side of the suspension lower links.
  - Refer to the Lot Number Locations below.
  - Armada and Pathfinder: Inspect front and rear (all 4) lower links.
  - Frontier, Titan, and Xterra: Inspect both front lower links.
3. Compare the Lot Number of each lower link to the Lot Number examples on the next page.

### Lot Number Locations



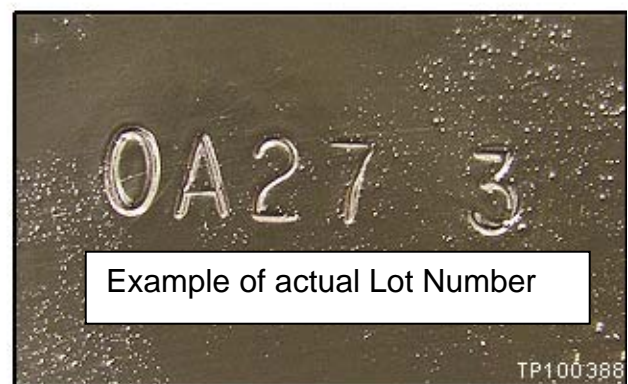
Front: Armada and Titan



Front: Xterra, Frontier, and Pathfinder

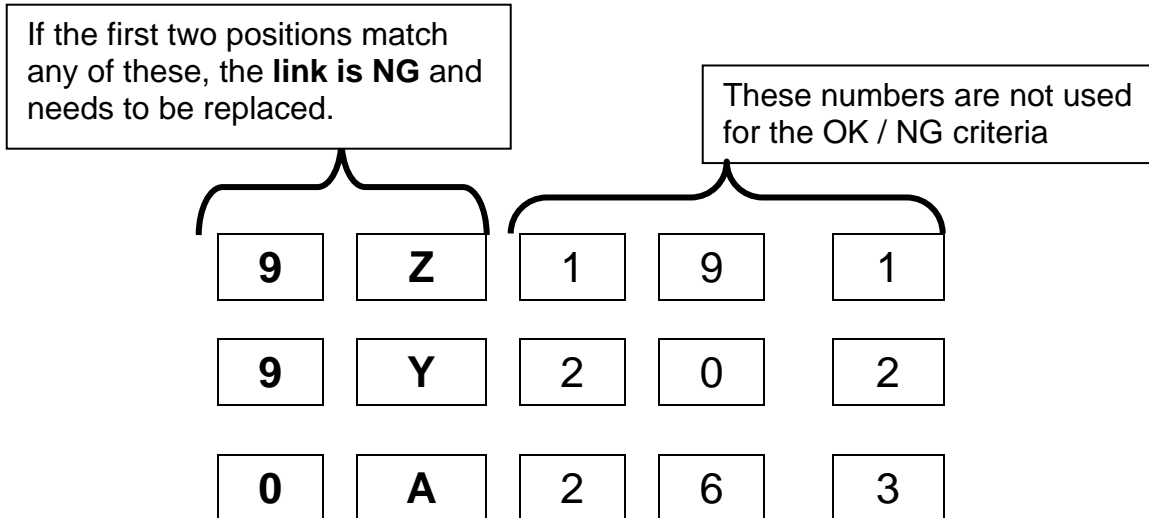


Rear: Pathfinder and Armada



Compare the Lot Number of each lower link to these Lot Number examples.

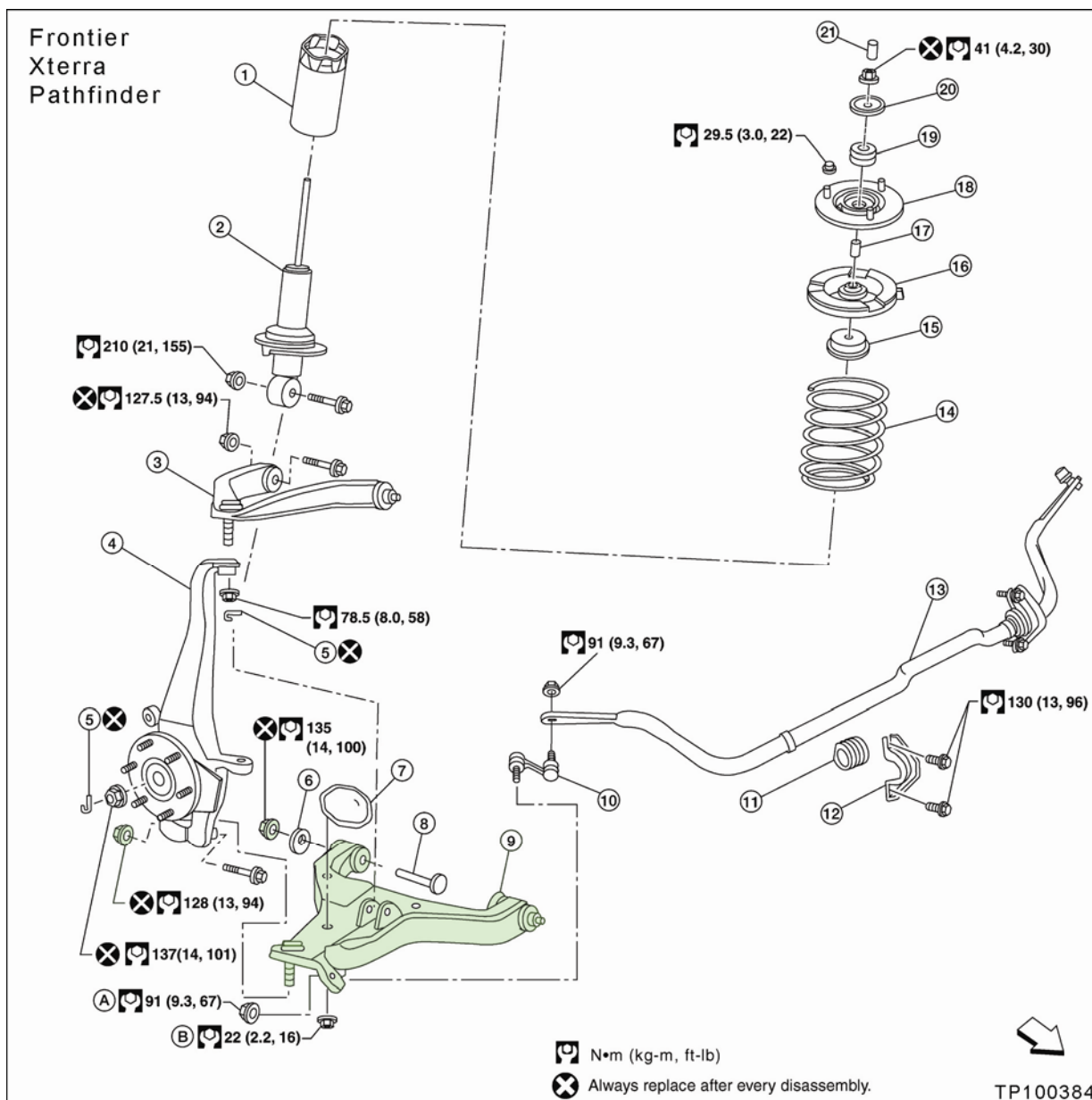
Lot Number Examples:



- **First two positions match one of the above: NG, replace only that link**
  - Compare the Lot Number from each link.
  - Replace **only** the link(s) with a match to one or the examples above.
- **No match to the examples above: OK, do not replace link**
  - Compare the Lot Number from each link.
  - Do not replace link if there is not a match to one of the examples above.
- **All links check OK: No further action needed.**

## LINK REPLACEMENT

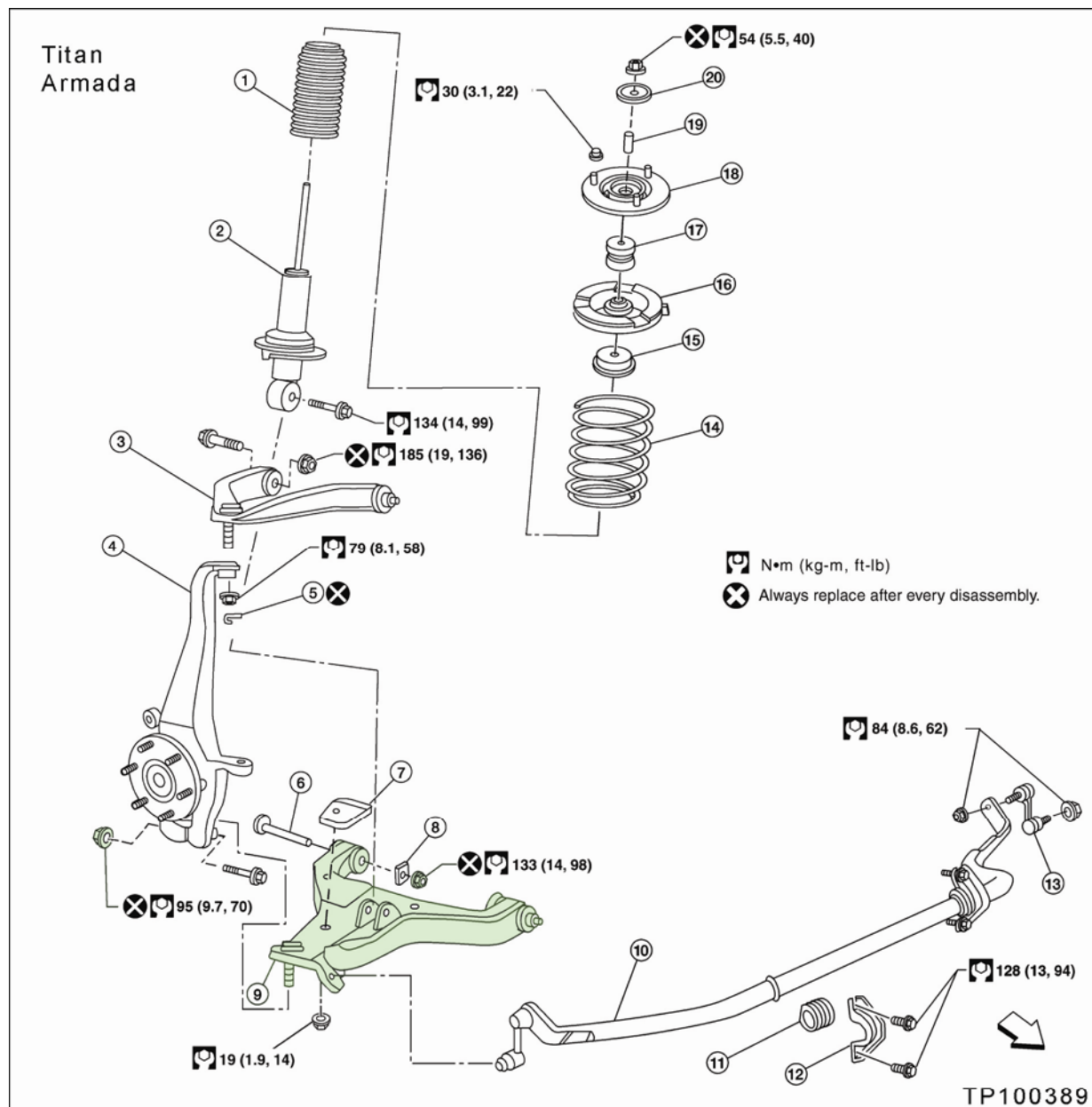
### Frontier, Xterra, and Pathfinder Front Suspension Lower Link Replacement



- |                       |                            |                                       |
|-----------------------|----------------------------|---------------------------------------|
| 1. Dust cover         | 2. Shock absorber          | 3. Upper link                         |
| 4. Steering knuckle   | 5. Cotter pin              | 6. Washer                             |
| 7. Jounce bumper      | 8. Bolt                    | 9. Lower link                         |
| 10. Connecting rod    | 11. Stabilizer bar bushing | 12. Stabilizer bar bracket            |
| 13. Stabilizer bar    | 14. Coil spring            | 15. Dust cover cap                    |
| 16. Upper spring seat | 17. Spacer                 | 18. Shock absorber mounting insulator |
| 19. Spacer            | 20. Washer                 | 21. Cap                               |
| ⇐ Front               | A. To connecting rod       | B. To Jounce bumper                   |

**NOTE:** See procedure steps on page 9.

## Titan and Armada Front Suspension Lower Link Replacement

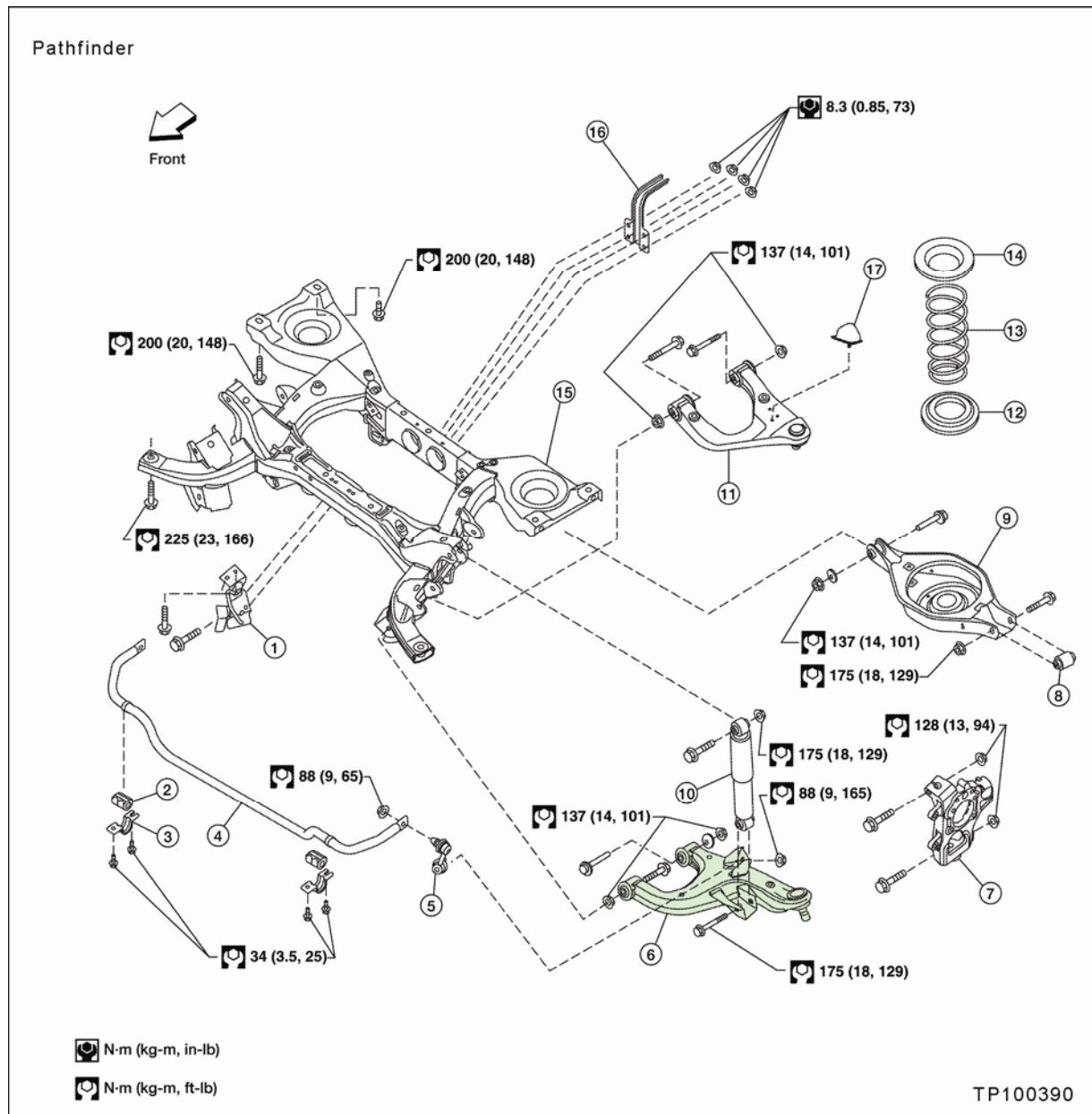


- |                       |                            |                                       |
|-----------------------|----------------------------|---------------------------------------|
| 1. Dust cover         | 2. Shock absorber          | 3. Upper link                         |
| 4. Steering knuckle   | 5. Cotter pin              | 6. Bolt                               |
| 7. Jounce bumper      | 8. Washer                  | 9. Lower link                         |
| 10. Stabilizer bar    | 11. Stabilizer bar bushing | 12. Stabilizer bar mounting bracket   |
| 13. Connecting rod    | 14. Coil spring            | 15. Upper seat                        |
| 16. Upper spring seat | 17. Shock absorber bushing | 18. Shock absorber mounting insulator |
| 19. Spacer            | 20. Washer                 | ← Front                               |

**NOTE:** See procedure steps on page 9.



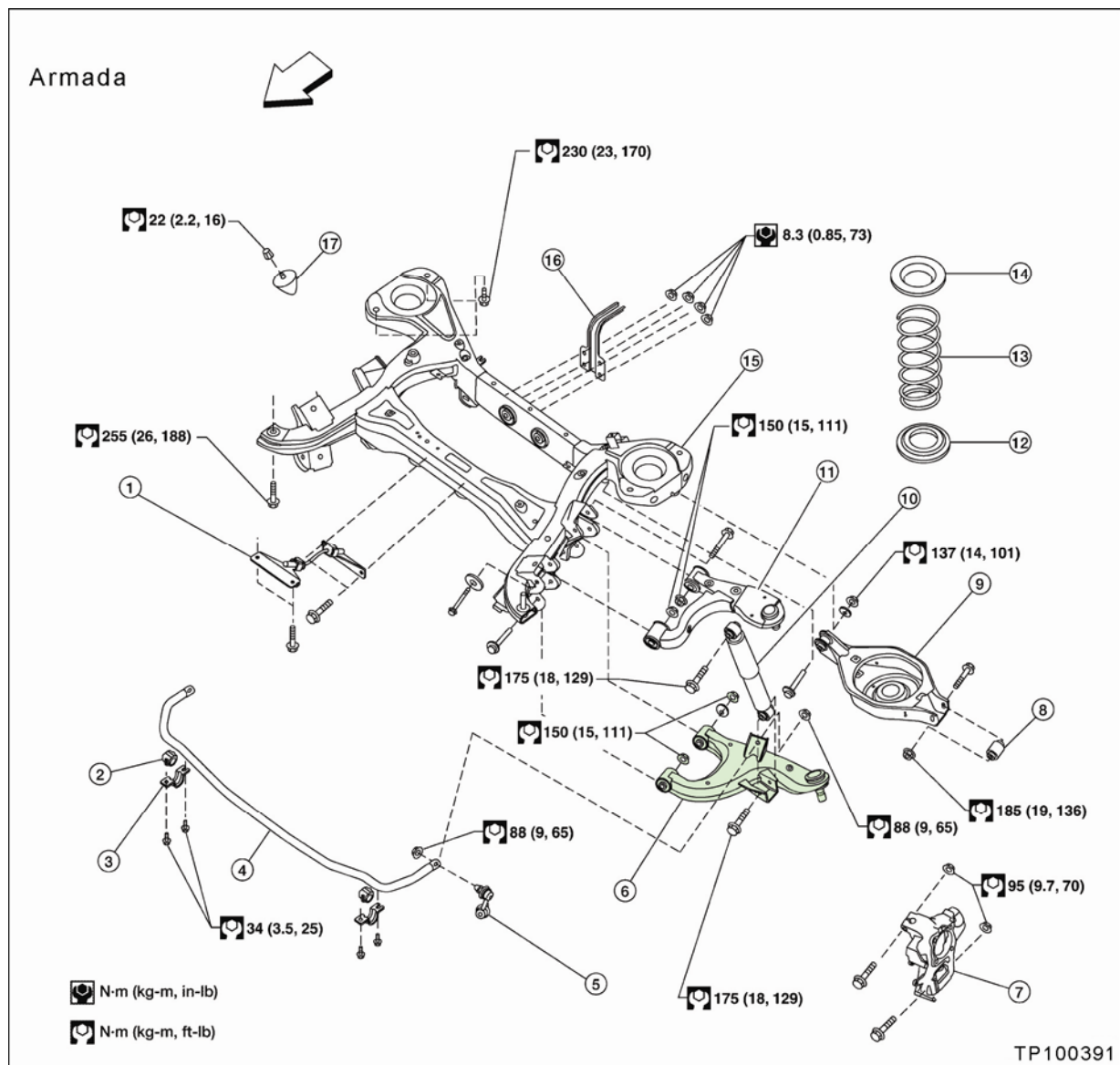
## Pathfinder Rear Suspension Lower Link Replacement



- |                           |                           |                            |
|---------------------------|---------------------------|----------------------------|
| 1. Seat belt latch anchor | 2. Stabilizer bar bushing | 3. Stabilizer bar clamp    |
| 4. Stabilizer bar         | 5. Connecting rod         | 6. Front lower link        |
| 7. Knuckle                | 8. Bushing                | 9. Rear lower link         |
| 10. Shock absorber        | 11. Suspension arm        | 12. Lower rubber seat      |
| 13. Coil spring           | 14. Upper rubber seat     | 15. Rear suspension member |
| 16. Spare tire bracket    | 17. Bound bumper          |                            |

**NOTE:** See procedure steps on page 9.

## Armada Rear Suspension Lower Link Replacement



- |                           |                           |                            |
|---------------------------|---------------------------|----------------------------|
| 1. Seat belt latch anchor | 2. Stabilizer bar bushing | 3. Stabilizer bar clamp    |
| 4. Stabilizer bar         | 5. Connecting rod         | 6. Front lower link        |
| 7. Knuckle                | 8. Bushing                | 9. Rear lower link         |
| 10. Shock absorber        | 11. Suspension arm        | 12. Lower rubber seat      |
| 13. Coil spring           | 14. Upper rubber seat     | 15. Rear suspension member |
| 16. Spare tire bracket    | 17. Bound bumper          | ⇐ Front                    |

**NOTE:** See procedure steps on page 9.



### 1. For front lower link(s) identified as needing replacement:

Use the appropriate illustration in this bulletin and the appropriate Service Manual, section FSU, for link replacement information.

- Make sure to replace the ball joint securing nut with a new one. New nut is listed in the Parts Information.
- Make sure to replace both lower link nuts with new ones. New nuts are listed in the Parts Information.

**NOTE:** The original (factory installed) bolts for the front lower links are self centering and should not need replacement. The vehicle should need toe adjustment only.

- Follow torque specifications in the illustrations.

### 2. For rear lower link(s) identified as needing replacement:

Use the appropriate illustration in this bulletin and the appropriate Service Manual, section RSU, for link replacement information.

- Make sure to replace the ball joint securing nut with a new one. New nut is listed in the Parts Information.
- Make sure to replace both lower link nuts with new ones. New nuts are listed in the Parts Information.
- Follow torque specifications in the illustrations.

### 3. Perform a wheel alignment.

- For Frontier, Xterra, and Titan: Perform a 2 wheel alignment (refer to Section FSU in the appropriate Service Manual for alignment specifications and adjustment points).
- For Pathfinder and Armada: Perform a 4 wheel alignment. (Refer to sections FSU and RSU in the appropriate Service Manual for alignment specifications and adjustment points.)

**NOTE:** The original (factory installed) bolts for the front lower links are self centering and should not need replacement. The vehicle should need toe adjustment only.

4. Grind a large X (about 1/16 inch deep) on the bottom side of the old link so it can be identified as a non-usable part.

**NOTE:** Make sure to use suitable hand and eye protection.



## PARTS INFORMATION

### FRONTIER and XTERRA

DESCRIPTION	PART #	QTY
Front Link Lower, RH	54500-EA00A	1
Front Link Lower, LH	54501-EA00A	1
Nut-Link (Lower link nut)	08918-6441A	2 per link (max 4)
Nut-Knuckle Spindle (Ball joint securing nut)	01223-N004U	1 per link (max 2)

### PATHFINDER

DESCRIPTION	PART #	QTY
Front Link Lower, RH	54500-EA00A	1
Front Link Lower, LH	54501-EA00A	1
Rear Link Lower, RH	551A0-EA500	1
Rear Link Lower, LH	551A1-EA500	1
Nut-Link (Lower link nut, front or rear)	08918-6441A	2 per link (max 8)
Nut-Knuckle Spindle (Ball joint securing nut-front or rear)	01223-N004U	1 per link (max 4)

### TITAN

DESCRIPTION	PART #	QTY
Front Link Lower, RH	54500-ZR00A	1
Front Link Lower, LH	54501-ZR00A	1
Nut-Link (Lower link nut)	08918-6441A	2 per link (max 4)
Nut-Knuckle Spindle (Ball joint securing)	40262-7S100	1 per link (max 2)

### ARMADA

DESCRIPTION	PART #	QTY
Front Link Lower, RH	54500-ZQ00A	1
Front Link Lower, LH	54501-ZQ00A	1
Rear Link Lower, RH	551A0-ZQ00A	1
Rear Link Lower, LH	551A1-ZQ00A	1
Nut-Link (Lower link nut, front or rear)	08918-6441A	2 per link (max 8)
Nut-Knuckle Spindle (Ball joint securing nut-front or rear)	40262-7S100	1 per link (max 4)

## CLAIMS INFORMATION

Submit a CM line claim using the following claims coding:

“CM” I.D.: PC049

OP CODE	DESCRIPTION	2WD FRT
PC0490	Inspect - OK	0.3 hr.
PC0491	Replace 1 Front and 0 Rear	1.6 hr.
PC0492	Replace 2 Front and 0 Rear	1.9 hr.
PC0493	Replace 1 Front and 1 Rear	2.2 hr.
PC0494	Replace 2 Front and 1 Rear	2.5 hr.
PC0495	Replace 0 Front and 1 Rear	2.0 hr.
PC0496	Replace 0 Front and 2 Rear	2.6 hr.
PC0497	Replace 1 Front and 2 Rear	2.8 hr.
PC0498	Replace 2 Front and 2 Rear	3.1 hr.
OP CODE	DESCRIPTION	4WD FRT
PC0490	Inspect - OK	0.3 hr.
PC0499	Replace 1 Front and 0 Rear	2.1 hr.
PC049A	Replace 2 Front and 0 Rear	2.9 hr.
PC049B	Replace 1 Front and 1 Rear	2.6 hr.
PC049C	Replace 2 Front and 1 Rear	3.3 hr.
PC049D	Replace 0 Front and 1 Rear	2.0 hr.
PC049E	Replace 0 Front and 2 Rear	2.6 hr.
PC049F	Replace 1 Front and 2 Rear	3.2 hr.
PC049G	Replace 2 Front and 2 Rear	3.9 hr.

## EXPENSE CODES

EXPENSE	EXPENSE CODE	MAXIMUM AMOUNT
Car Rental	502	\$200.00

## OWNER'S LETTER (example of typical owner's letter)

Dear Nissan Frontier Owner:

This notice is sent to you in accordance with the requirements of the National Traffic and Motor Vehicle Safety Act. Nissan has decided that a defect which relates to motor vehicle safety exists in a limited number of lower control link service parts for MY2005-2010 Nissan Frontier vehicles. Our records indicate that you own or lease the Nissan vehicle identified by the VIN on the cover of this notice.

**If the lower control link on your vehicle was replaced between November 25, 2009 and May 14, 2010, your vehicle may have one of the affected lower control links included in this campaign.**

### Reason for Recall

Your vehicle suspension contains lower control links that attach to the chassis mounting points. The lower control links installed when your vehicle was produced are **not** affected by this concern. A limited number of replacement service parts for the lower control links may have been manufactured out of specification and may contain welds that do not meet the proper strength specifications. If one of these welds separates, the lower control link can slip from its mounting bolt potentially changing the wheel camber. If this occurs, the handling characteristics of your vehicle may deteriorate and increase the risk of a crash.

### What You Should Do

1. If you know that the lower control links in your vehicle were not replaced between November 25, 2009 and May 14, 2010, **no further action is required on your part.**
2. **If you did have a lower control link on your vehicle replaced between November 25, 2009 and May 14, 2010 or you do not know if one was replaced**, please contact your Nissan dealer at your earliest convenience in order to arrange an appointment to have your vehicle inspected, and if necessary, repaired.

### What Nissan Will Do

Your Nissan dealer will determine whether the lower control links in your vehicle are affected. If they are, the dealer will replace them if necessary, free of charge for parts and labor. Depending on the number of links that need to be replaced, this repair may take up to four hours to complete, but your Nissan dealer may require your vehicle for a longer period of time based upon their work schedule.

To minimize your inconvenience, it is important that you have an appointment before bringing your vehicle to the dealer for repairs. Please bring this notice with you when you keep your service appointment. Instructions have been sent to your Nissan dealer.

Please contact the National Consumer Affairs Department for instructions. National Consumer Affairs Department, Nissan North America, Inc., P.O. Box 685003, Franklin, TN 37068-5003. The toll free number is 1-800-NISSAN1 (1-800-647-7261).

If you feel that Nissan failed to remedy your vehicle free of charge or within a reasonable amount of time, you may submit a complaint to the Administrator, National Highway Traffic Safety Administration, 1200 New Jersey Avenue, SE., Washington, DC 20590; or call the toll-free Vehicle Safety Hotline at 1-888-327-4236 (TTY: 1-800-424-9153); or go to <http://www.safercar.gov>.

Federal law requires that any vehicle lessor receiving this recall notice must forward a copy of this notice to the lessee within ten days.

Thank you for your cooperation. We are indeed sorry for any inconvenience this may cause you.