



BLUE BIRD

R11SV

February 14, 2011

Dear Blue Bird Owner:

This notice is sent to you in accordance with the requirements of the National Traffic and Motor Vehicle Safety Act.

Blue Bird has decided that a defect which relates to motor vehicle safety exists in certain 2011 model year "Vision" model school and non-school buses equipped with hydraulic brakes manufactured from November 13, 2009 through December 15, 2010.

On the subject buses, the foot operated parking brake may deform upon application which may prevent the parking brake from applying. This condition may permit the bus to roll unexpectedly when parked which could cause property damage, personal injury or death.

Blue Bird is conducting a recall to correct this defect. Buses with this defect must be corrected immediately according to the enclosed instructions for Recall R11SV. Parts and labor required to complete Recall R11SV according to the attached instructions will be provided at no cost to you.

Your Blue Bird bus(es) affected by this recall are identified by body serial number(s) on the enclosed reply sheets. If you no longer own the subject bus(es), please complete the appropriate section of the **yellow** parts request sheet and return to Blue Bird in the enclosed pink postage prepaid envelope.

You should contact your Blue Bird dealer to have this recall performed. Or, if you prefer, you may perform this recall yourself or have a qualified repair facility convenient to you perform this recall. A qualified technician should perform this recall.

If you elect to perform this recall yourself, or have a qualified repair facility convenient to you perform this recall you should return the **yellow parts request sheet**, with a valid UPS delivery address, to Blue Bird in one of the enclosed pink, postage paid reply envelopes.

The required parts will be shipped to you or the repairing facility at "no charge".

Labor time to remove park brake pedal assembly and install reinforcing bracket on park brake pedal assembly is 0.42 hrs (25 minutes) per bus.

Labor time to remove a damaged park brake pedal assembly and install a new park brake pedal assembly and reinforcing bracket is 0.42 hrs (25 minutes) per bus.

BLUE BIRD BODY COMPANY

P.O. Box 937 – 402 Blue Bird Blvd – Fort Valley, Georgia – (478) 825-2021

If you perform Recall R11SV, or have a qualified repair facility convenient to you perform this recall, **reimbursement for labor** may be obtained by completing the pink request for reimbursement sheet provided and returning it to Blue Bird in the enclosed pink postage prepaid envelope.

If the modifications directed by this notification were performed on your bus prior to the receipt of this recall notification, complete and sign the recall reply sheet and attached a copy of the work order/invoice. Mail the documents in the **pink** self-addressed postage paid envelope included with the recall notification to Blue Bird for warranty consideration. Reimbursements will be made in accordance with the requirements of the National Highway Transportation Safety Act, Title 49 Code of Federal Regulations, Parts 573 and 577.

Federal law requires that any vehicle lessor receiving this recall notice must forward a copy of this notice to the lessee within ten days.

If Blue Bird Body Company should fail to or is unable to remedy this condition without charge to you, you may contact:

**ADMINISTRATOR
NATIONAL HIGHWAY TRAFFIC SAFETY ADMINISTRATION
1200 NEW JERSEY AVENUE, SE
WASHINGTON, D.C. 20590**

Or, you may call The National Highway Traffic Safety Administration toll free at:

1-888-327-4236
TTY 1-800-424-9153

Or, go to: [HTTP://WWW.SAFERCAR.GOV](http://WWW.SAFERCAR.GOV)

Questions regarding this recall campaign should be directed to me at (478) 822-2242.

Thank you,



Bill Coleman
Corporate Recall Administrator
BLUE BIRD CORPORATION



PARKING BRAKE PEDAL DEFORMATION

RECALL

Models Affected: 2011 model year Vision models with hydraulic brakes and foot operated parking brake

ISSUE

Foot operated parking brake pedal may deform when setting the parking brake.

CORRECTIVE ACTION

Install relocation kit to realign the foot operated parking brake assembly. Replace parking brake assembly, if deformed or damaged.

PROCEDURE

WARNING: Always follow all Federal, State, Local and Shop safety standards and use proper safety equipment when performing these procedures. Thoroughly read and understand all instructions before performing this procedure.

1. Park bus on a level surface, apply parking brake, switch engine off, remove ignition key.
2. Chock wheels then release parking brake.
3. Disconnect parking brake release handle by removing the cotter pin and flat washer and set aside for use later. (Fig. 1)
4. Remove two 5/16-18 x 2.00 capscrews holding parking brake assembly to parking brake mounting bracket. Discard capscrews. (Fig. 2)



Fig. 1



Fig. 2

R E C A L L C A M P A I G N



PARKING BRAKE PEDAL DEFORMATION *RECALL*

5. Remove parking brake assembly from parking brake mounting bracket. Set aside spacer on lower bolt for use later. (Fig. 3) Disconnect electrical plug. (Fig. 4)

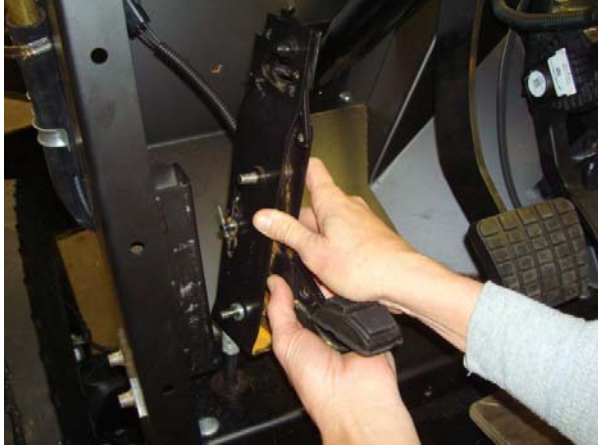


Fig. 3



Fig. 4

R I I S V

R E C A L L C A M P A I G N



PARKING BRAKE PEDAL DEFORMATION *RECALL*

6. With parking brake assembly set aside, place adapter bracket from relocation kit (BB# 10020447) over existing parking brake mounting bracket on base structure. Position as far to left as welds will allow, and line up bracket even with top of existing bracket. (Fig. 5) The two 5/16 holes should face toward the rear of bus.
7. Clamp adapter bracket in place if necessary, and drill (with 5/16" drill bit) through parking brake mounting bracket and through back of adapter bracket, using the two 5/16 holes as locator points. (Fig. 6 & 7)

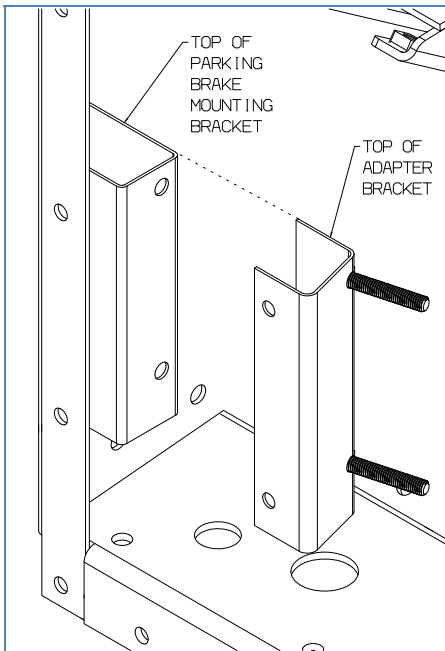


Fig. 5

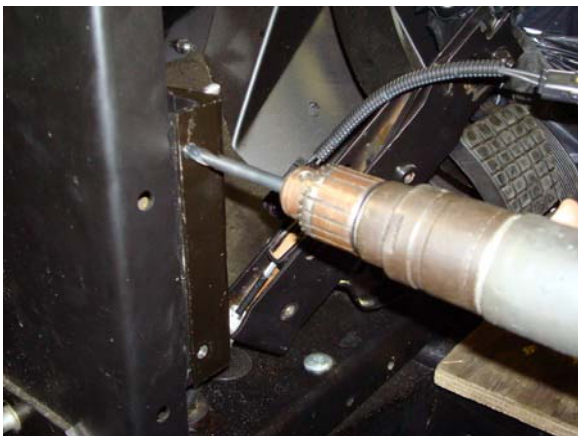


Fig. 6



Fig. 7

8. Refer to "**Pedal Replacement**" on page 6 if you are replacing a deformed or damaged parking brake pedal assembly at this point.

R I I S V
R E C A L L C A M P A I G N



PARKING BRAKE PEDAL DEFORMATION **RECALL**

9. Place spacer on lower stud of adapter bracket (Fig. 8) then place park brake release handle bracket on upper stud and then install parking brake assembly onto adapter bracket with two flanged lock nuts. Leave lock nuts finger tight at this time. (Fig. 9)



Fig. 8



Fig. 9

10. Place adapter bracket with assembled parts onto the parking brake mounting bracket, align holes, and fasten with two 5/16-18 x 2 1/2 capscrews and flanged lock nuts through drilled holes. Tighten to 150-200 in-lb. (Fig. 10)



Fig. 10

R I I S V

R E C A L L C A M P A I G N



PARKING BRAKE PEDAL DEFORMATION *RECALL*

11. Thread parking brake release handle through hole in parking brake release handle support bracket, insert end into parking brake assembly, and fasten using flat washer and cotter pin. (Fig. 11)
12. Tighten the flanged nuts on the studs of the adapter bracket to 150-200 in-lbs. Be sure parking brake release handle support bracket is between 45-50 degrees from horizontal when finished. (Fig. 12)
13. Parking brake release handle must retract freely when pulled & released. Bend parking brake release handle support bracket side-to-side as needed to relieve any rod binding on support bracket bushing.
14. Reconnect electrical plug. (Fig. 13)
15. If park brake cable adjustment is necessary, follow procedure outlined in Blue Bird Vision service manual.



Fig. 11



Fig. 12



Fig. 13

16. After all repairs have been completed, place bus back in service.

R I I S V

R E C A L L C A M P A I G N



PARKING BRAKE PEDAL DEFORMATION **RECALL**

Parking Brake Pedal Replacement

1. Disconnect park brake cable by removing the cotter pin and retaining pin that hold the cable yoke. (Fig. 1)
2. Pull yoke out of parking brake assembly (Fig 2), turn 90 degrees (Fig.3), and remove it from the cable. (Fig. 4)



Fig. 1



Fig. 2



Fig. 3

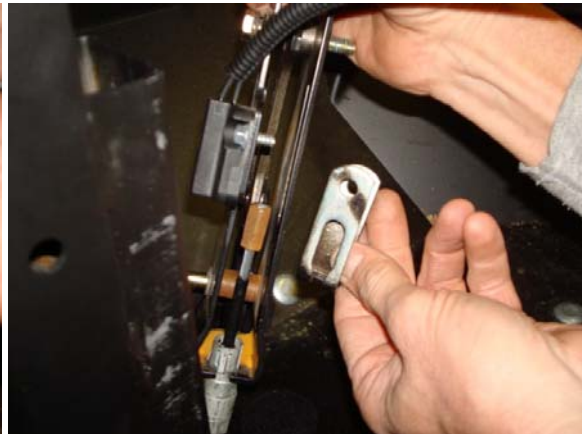


Fig. 4

R I I S V

R E C A L L C A M P A I G N



PARKING BRAKE PEDAL DEFORMATION *RECALL*

Parking Brake Pedal Replacement (continued)

3. Place a small hose clamp around the fingers on the cable retainer. (Fig. 5 & 6)
4. Tighten clamp (you may have to use a screw driver to keep the clamp in position on the back side as seen in Fig. 7) just enough to pull cable retainer down through the clamp and out of the bottom of the parking brake assembly. (Fig. 8)



Fig. 5



Fig. 6



Fig. 7



Fig. 8

R I I S V

R E C A L L C A M P A I G N



PARKING BRAKE PEDAL DEFORMATION

RECALL

Parking Brake Pedal Replacement (continued)

5. Push cable retainer up through the new parking brake assembly (Fig. 9), slide yoke on cable end (Fig. 10), and install the retaining pin through the parking brake assembly and yoke (Fig. 11), and install cotter pin. (Fig. 12)



Fig. 9



Fig. 10



Fig. 11



Fig. 12

6. Make sure large end of retaining pin is on the sensor side of the parking brake assembly. (Fig. 13)

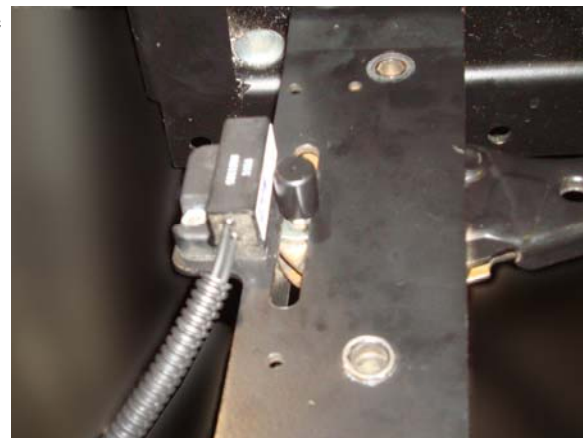


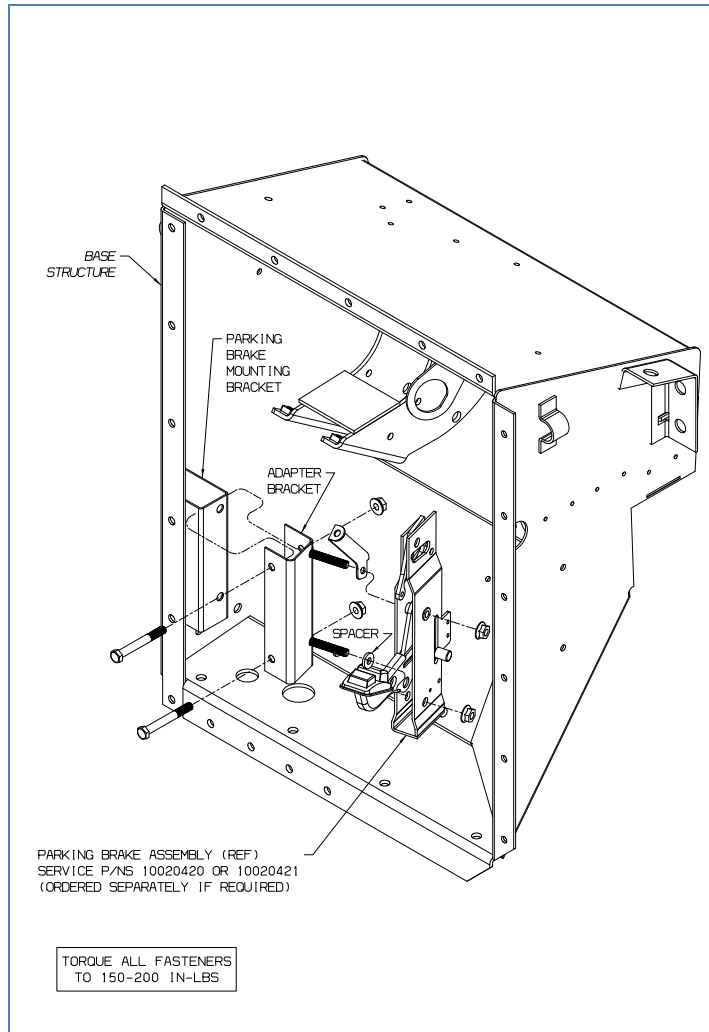
Fig. 13

R I I S V

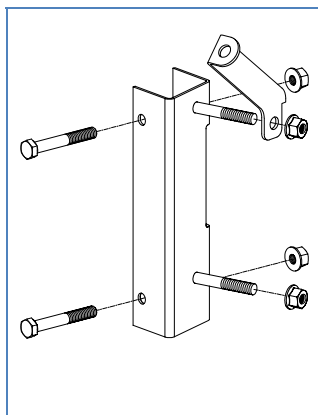
R E C A L L C A M P A I G N



PARKING BRAKE PEDAL DEFORMATION **RECALL**



Adapter Bracket/Pedal Assembly



Parts List: 10020447 KIT,RELOCATE,PEDAL,PARK BRK,SERV BBCV

R I I S V
R E C A L L C A M P A I G N