



May 24 , 2010

Recall 10V-100

This notice is sent to you in accordance with the requirements of the National Traffic and Motor Vehicle Safety Act. Thomas Built Buses, Inc. has decided that a defect which relates to motor vehicle safety exists on certain Saf-T-Liner C2 model buses manufactured between May 30, 2006 and January 8, 2010. These units are identified on the enclosed postcard (Form PSD 304).

The defect involves the reed switch. The reed switch used to detect the position of air operated front entrance door may malfunction causing warning lights and crossing arm to operate improperly during student loading. Malfunctioning warning lights during the loading or unloading process could put students at risk of injury.

You should immediately contact your Thomas Built Buses dealer for an appointment to have your vehicle modified. Thomas will remedy this defect without charge. The remedy will consist of replacing the reed switch with a more robust switch. It will take approximately .5 hour per unit for repair. **To arrange for repairs, contact your local Thomas Built Buses dealer. After the repair is made, please complete each postage paid card separately and return it to Thomas Built Buses to verify completion.**

In addition to being used to verify repair completion, the postcard must be completed and returned if the vehicle does not need repair, if you no longer own the vehicle, or the vehicle identified on the postcard has been exported, stolen, or destroyed/totaled. Federal law requires that any vehicle lessor receiving the recall notice must forward a copy of this notice to the lessee within 10 days.

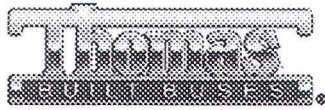
If you have had your vehicle repaired due to this defect prior to receipt of this notice and you have incurred any costs, you may be eligible for reimbursement. For further information, please contact the Customer Support office at (336) 889-4871, 8 a.m. to 5 p.m. eastern standard time Monday through Friday. To find a dealer in your area please go to [www.thomasbus.com](http://www.thomasbus.com).

If the defect is not remedied without charge and within a reasonable time which is not longer than 60 days after you tender the vehicle for repair, also please contact the Customer Support Office at (336)889-4871. You may also submit a complaint to the Administrator, National Highway Traffic Safety Administration, 1200 New Jersey Avenue, S.E., Washington, DC 20590, or phone the Vehicle Safety Hotline at 1-888-327-4236 (TTY: 1-800-424-9153) or go to <http://www.safercar.gov>. If your vehicle is involved in the Canadian portion, you may notify the Manager, Recall and Public Compliance, Road and Motor Vehicle Traffic Safety Branch, Transport Canada, Ottawa, Ontario or phone (613)993-9851

Sincerely,

Tracy Sauerbrey  
Warranty/Recall Department

Enclosure



## RECALL #10V-100

MODEL: C2

SUBJECT: AG2 AIR ENTRANCE DOOR POSITION SWITCH REPLACEMENT  
WITH 2-POSITION CONTROL SWITCH

PAGE: 1 OF 4

**IMPORTANT: READ ENTIRE PROCEDURE BEFORE BEGINNING.**

1. Chock the tires and be sure the ignition key is in the "Off" position.
2. On units built prior to 9/21/09, remove the entrance door overhead cover. This is done by removing the nine (9) fasteners located at the front, top and rear of the cover. **Figure 1.** On units built on or after 9/21/09, remove the three access panel screws and lower the panel. **Figure 2**

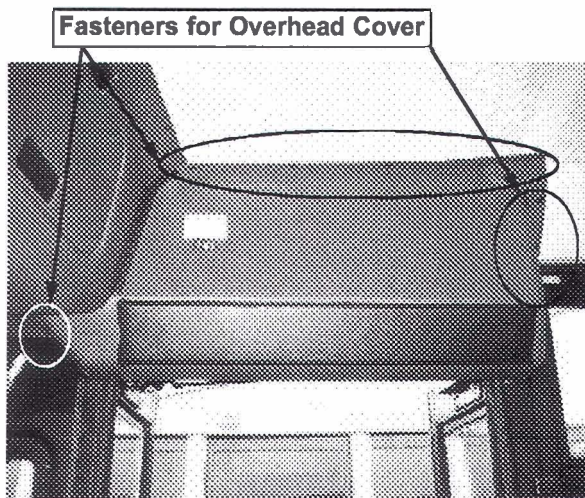


Figure 1 - Built prior to 9/21/09

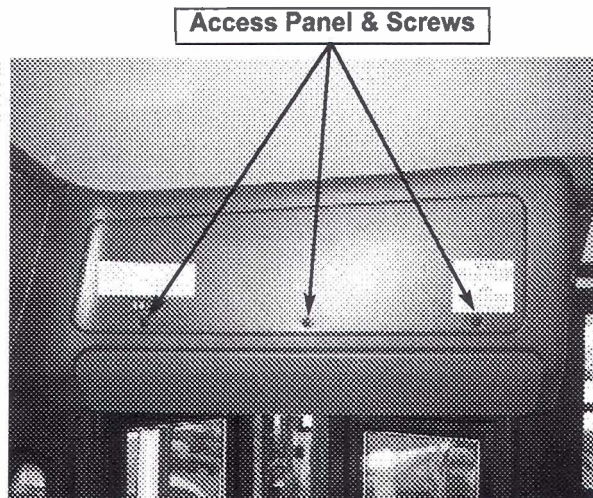


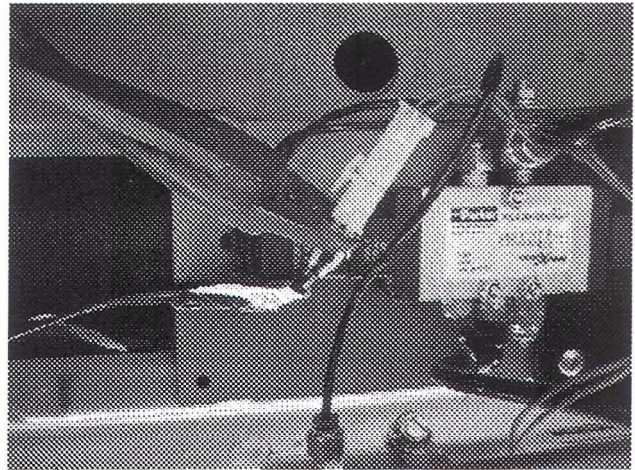
Figure 2 - Built on or after 9/21/09

REPAIR PROCEDURE

3. Locate the entrance door position switch clamped to the air actuator. **Figure 3**
4. Disconnect the entrance door position switch from the body harness by cutting the wires behind the connector. **Figure 4**

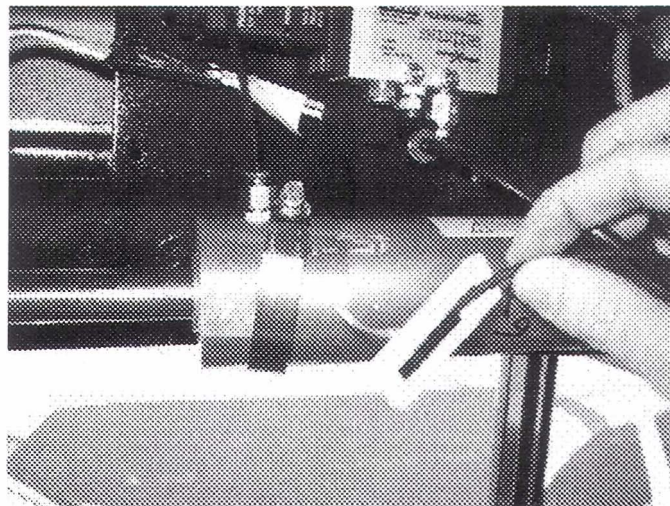


**Figure 3**



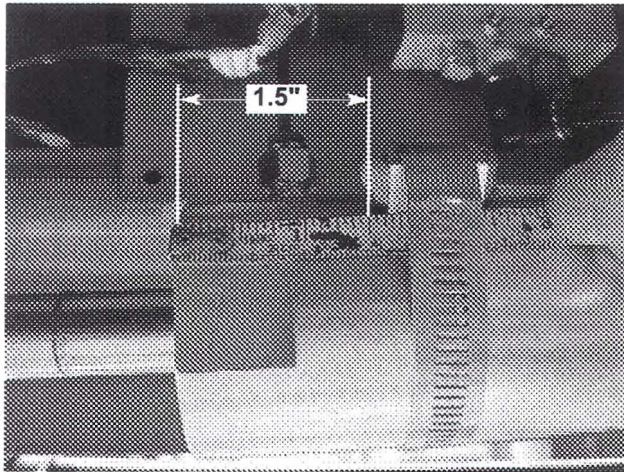
**Figure 4**

5. Remove and discard the band clamp, old entrance door position switch, and plastic housing. **Figure 5**

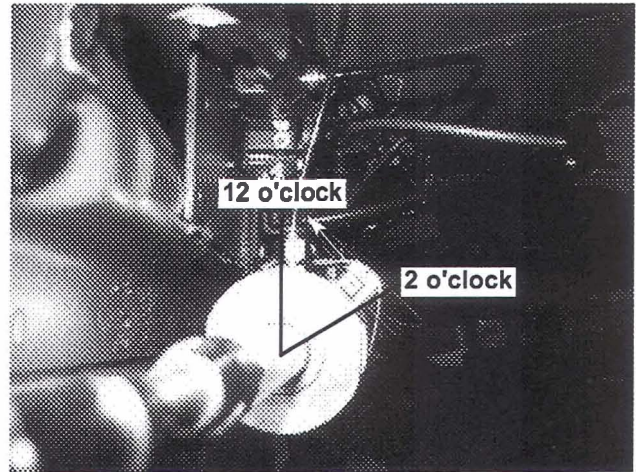


**Figure 5**

6. Install new entrance door position switch, #TBB 165692 with the new band clamp, #TBB164982 loosely on the actuator. Install the switch so that its end is one and one half inches (1.5") from the end of the actuator body. It should be positioned between 12 o'clock and 2 o'clock as referenced from the actuator fittings. The band clamp should be centered on the aluminum housing. Tighten the band clamp to 20 in-lbs. **Figures 6 & 7**

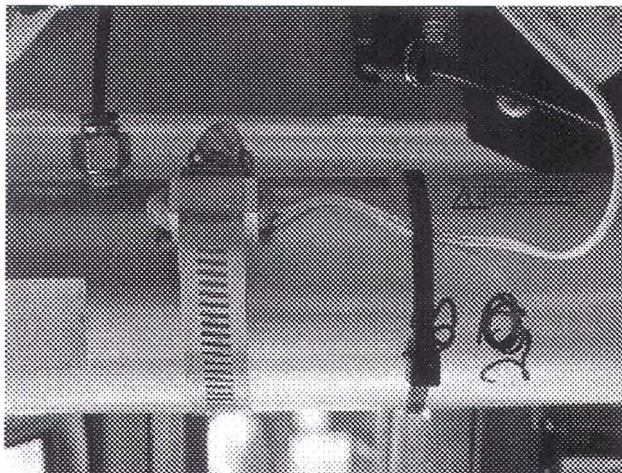


**Figure 6**

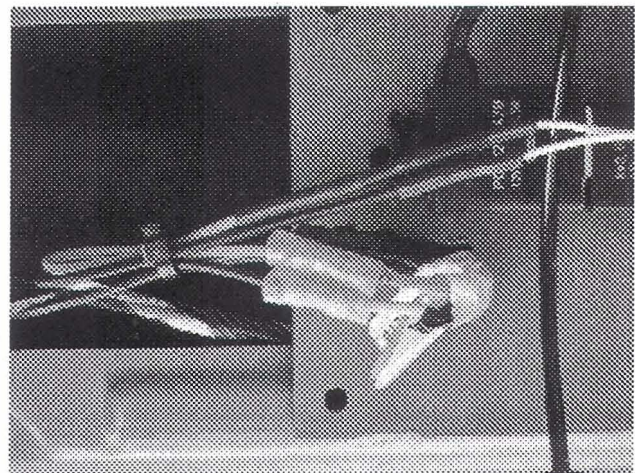


**Figure 7**

7. Place the tie wrap around the switch wires and actuator body. This will act as a strain relief for the entrance door position switch wiring. **Figure 8**
8. Splice the new switch to the body harness; black switch wire to white body wire, and tan to tan. Pull on the wires from each side of the splices to ensure a good connection was made. **Figure 9**

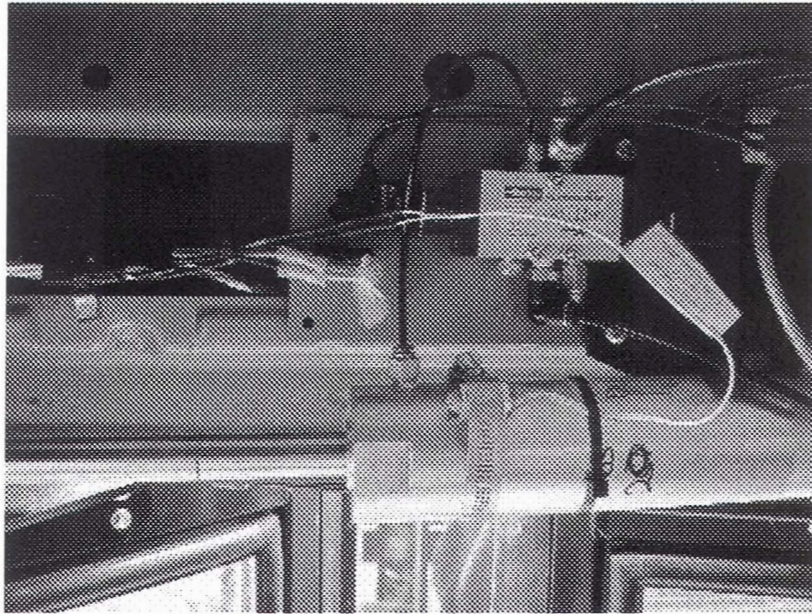


**Figure 8**



**Figure 9**

9. Bundle and tie wrap the excess wire at the body harness. Leave enough wire for air actuator to move freely during operation. DO NOT tie or pull on heat shrunk area of wire. A resistor is installed in this location. **Figure 10**



**Figure 10**

10. Turn ignition "On" and test for proper operation of the warning light system. If equipped, confirm operation of the Passenger Advisory System and Stepwell Light.
11. Reinstall the entrance door overhead cover or access panel.
12. Remove tire chocks.

**MATERIALS REQUIRED: KIT PROCEDURE TBB 165692, FIELD SERVICE KIT, REED SWITCH ASSEMBLY**

<b><u>PART NUMBER</u></b>	<b><u>QTY.</u></b>	<b><u>DESCRIPTION</u></b>
TBB 165667	1	REED SWITCH ASSEMBLY, HOLSTER W/OUT CONNECTOR
TBB 164982	1	WORM GEAR CLAMP - 2 3/4"
TBB 61200508	2	TIE WRAP, 15 1/2", BLACK