

## CERTAIN 2011 MODEL YEAR EDGE, MKX, F-150 AND F-SUPER DUTY VEHICLES — BODY CONTROL MODULE (BCM) INSPECTION



### **NEW !** OVERVIEW

In some of the affected vehicles, the Body Control Module (BCM) may have a contaminated power circuit board. Dealers are to determine if module replacement is required by using the “Read BCM Serial Number” function of IDS. This special function is available in IDS release **71.03B** and higher. *Vehicles previously inspected with an IDS software release lower than 71.03B have been re-activated in OASIS and must be re-inspected.*

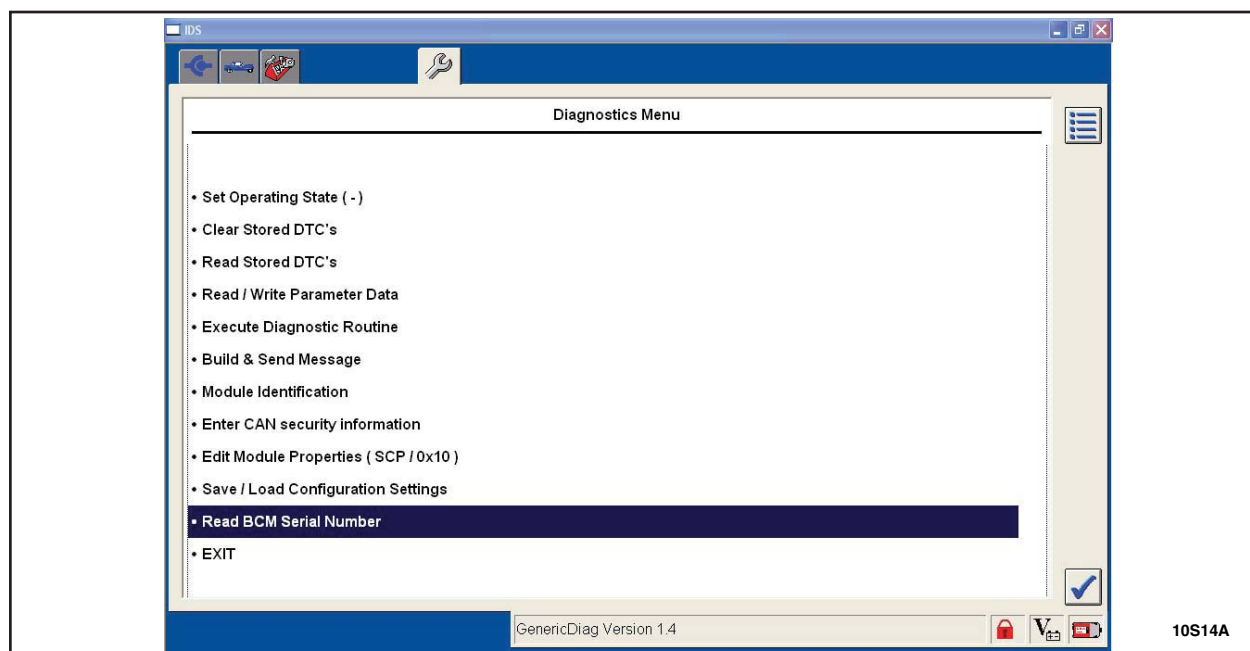
### INSPECTION

Using the IDS, follow the procedure below to read the part number of the BCM.

#### **NEW !**

1. Verify the IDS is updated to software release **71.03B** and higher.
2. *Start a new IDS session. This will allow IDS to log the BCM serial number with the VIN.*
3. From the System Utilities page (select the upper left tab  and then the lower right tab  ).
  - Select “Update / Special Function” and press the “tick”.
  - Enter **32267** and press the “tick”.Highlight “Eng Support Tool” in the left window  
Highlight “ENABLE” in the right window and press the “tick”.
4. From the “Diagnostics Menu” select “Read BCM Serial Number”. See Figure 1.

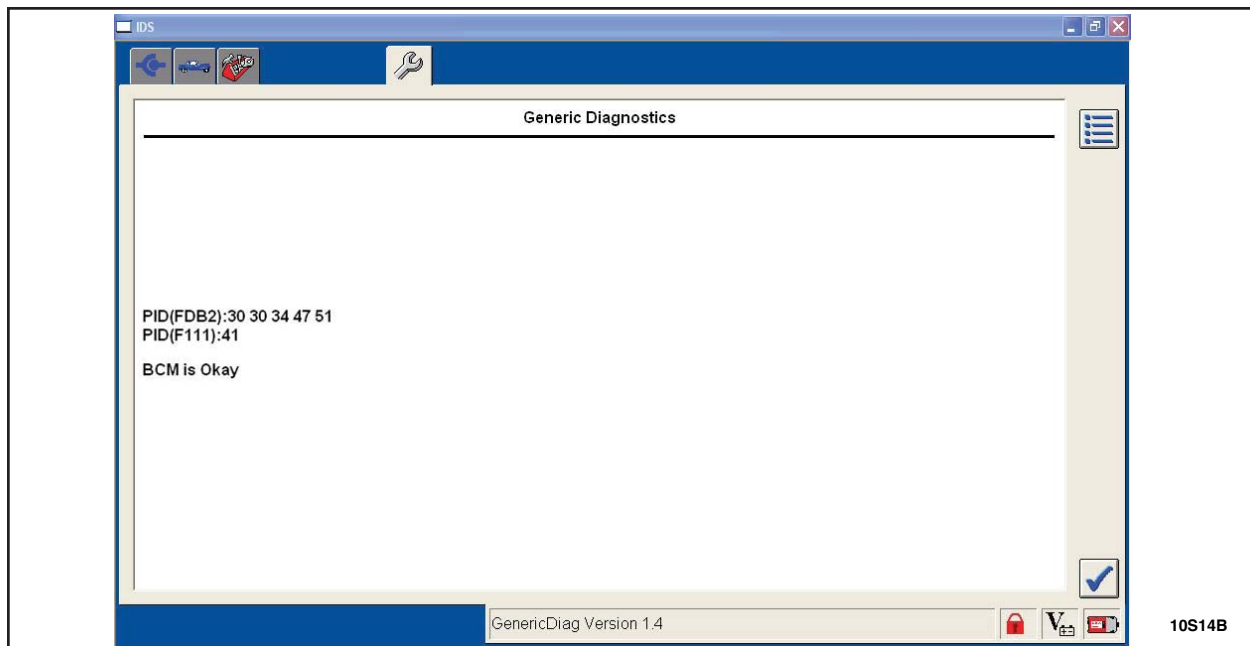
**NOTE:** The "Read BCM Serial Number" function will not be listed if IDS has not been updated.



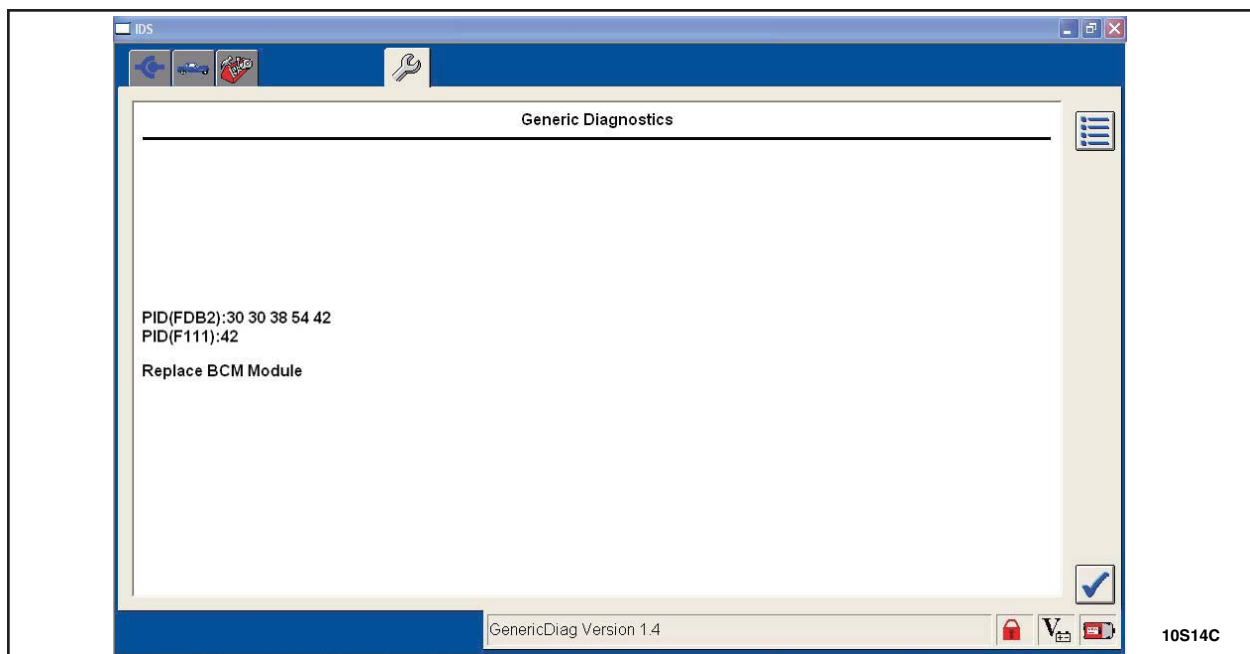
**FIGURE 1**



5. The results of this test will display either “Replace the BCM module” or “BCM is OK”.  
See Figures 2 and 3.



**FIGURE 2**



**FIGURE 3**

## SERVICE PROCEDURE

For BCM replacement, refer to the WSM, Section 419-10.

