

# Technical Bulletin

Division: Automotive  
Category: Technical

Section Title: Body, Cab and Accessories  
TSB No. TS 00 08100R

**SUBJECT:** SAFETY RECALL CAMPAIGN: SG, COUNTERMEASURE OF INSTRUMENT PANEL CENTER LOWER BOX.  
**MODEL(S):** KIZASHI (A6B424)  
**YEAR:** 2010 (BUILT BETWEEN OCTOBER 13, 2009 TO JUNE 17, 2010)

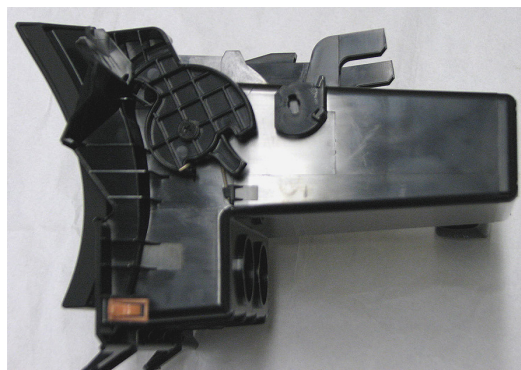
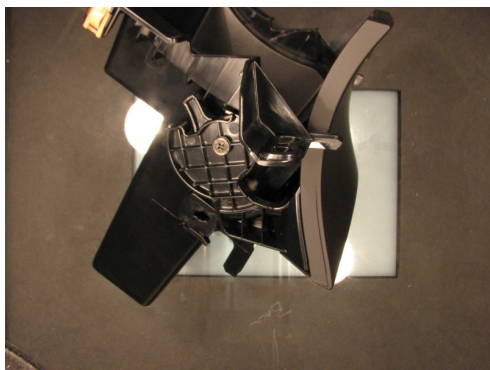
**CONDITION:** The hinged door on the instrument panel center lower box may not remain closed in the event of a crash.

**CAUSE:** Improper design of the latch mechanism.

**CORRECTION:** Please replace the instrument panel center lower box with a new replacement part. This will be performed at no charge to the customer for parts or labor.

## PART(S) INFORMATION:

Part Number	Description	Qty.	Notes
73890-57L01-RX0	Box, I/P Ctr Lower	1	See page 3 for instructions to identify countermeasure part.



Technical Service Department  
Dealership Circulation – Initial and file:

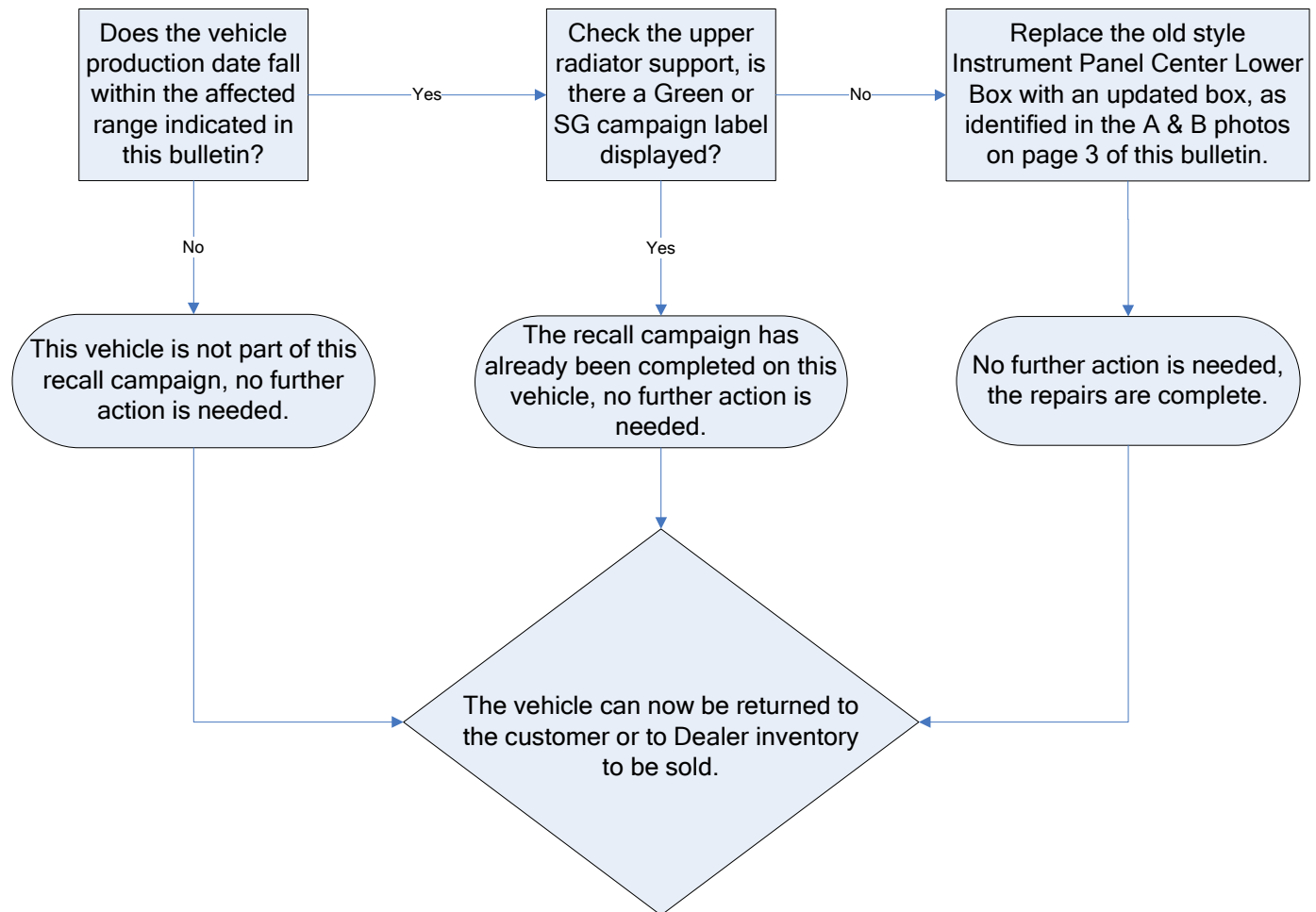
Service Manager	Parts Manager	Service Advisor	Technicians						

Suzuki bulletins are intended for use by professional technicians, NOT a "do-it-yourselfer." They are written to inform these technicians of conditions that may occur on some vehicles, or to provide information that could assist in the proper service of a vehicle. Properly trained technicians have the equipment, tools, safety instructions, and know-how to do a job properly and safely. If a condition is described, DO NOT assume that the bulletin applies to your vehicle, or that your vehicle will have that condition. See your authorized Suzuki dealer for information on whether your vehicle may benefit from the information. Suzuki reserves the right to change technical specifications at any time without prior notice.

### WARRANTY INFORMATION:

Campaign Code	Operation Code	Complaint Code	Defect Code	Labor Time
SG	QA9999	99	SG	0.5 hrs.

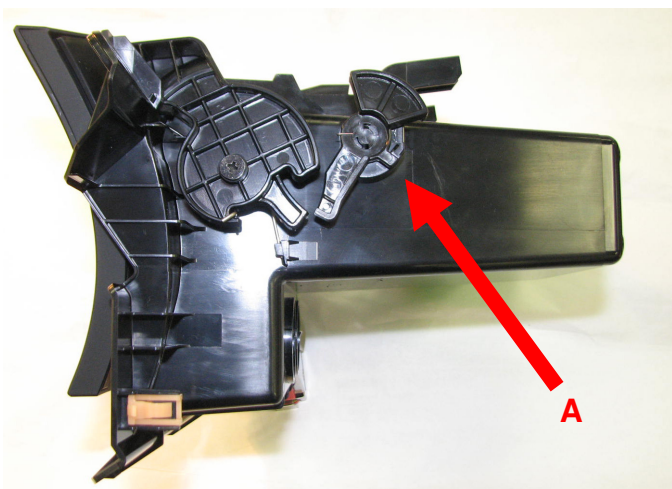
### Workflow



**Note:** Vehicles that had the campaign performed before leaving the port should have a “Green” label on the radiator support as shown. If there is a label similar to the one shown to the right, do not continue, no further action is required.

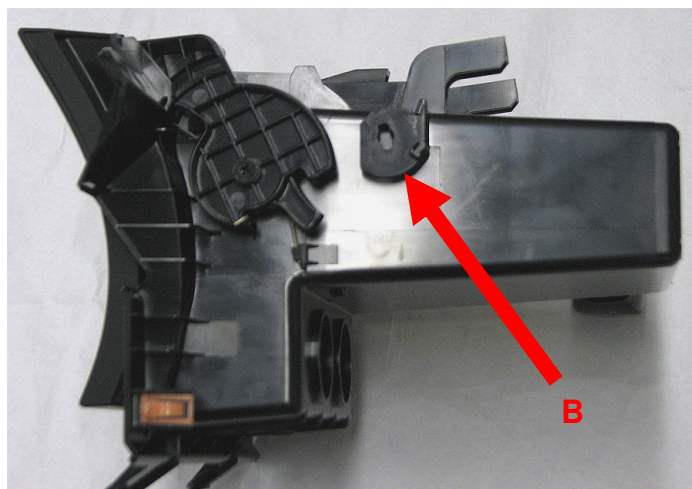
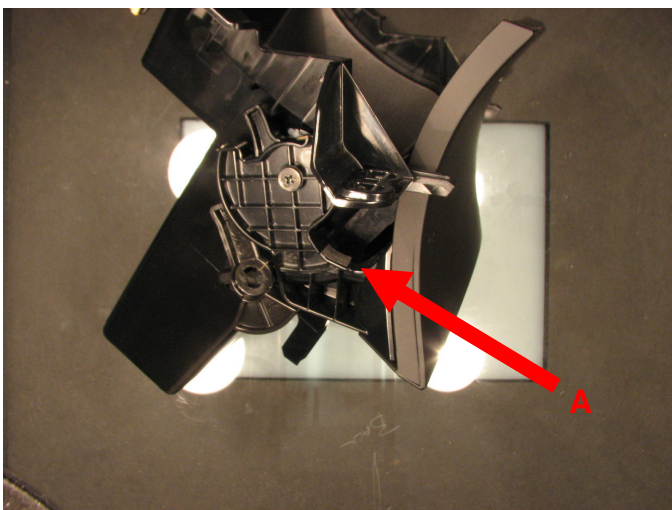


When you remove the instrument panel center lower box, if you find that it is identical to the new countermeasure part “B”, examples of both are shown below, reinstall box, no further action required.



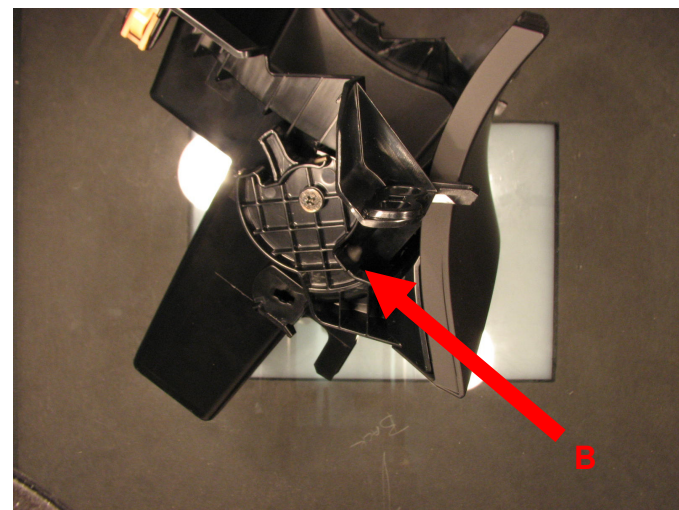
Part prior to countermeasure

A. With counter lock lever and flat, rectangular contact pad.



“New” countermeasure part

B. Without counter lock lever and cone shaped contact pad.



## Necessary Tools

Ref #	Tool Name
1	10mm box end offset wrench
2	#2 Phillips screwdriver
3	Small-tip flat-blade screwdriver
4	Micro flat-blade (pocket) screwdriver

Vinyl tape

Soft cloth towel(s)



## Repair Instructions

**NOTICE:** Resin parts are easily scratched, so to prevent this, the use of vinyl tape, masking tape, shop towels, etc.

**NOTE:** The illustrations and some steps in these instructions are for models equipped with a CVT and USB socket. The procedure is similar for models equipped with a M/T and/or no USB socket allowing the same instructions to be used.

1. If this is a customer's vehicle please confirm and record the preset conditions of the clock and audio systems so they can be reset after the repairs have been completed.
2. Apply the parking brake completely.
3. Slide the left and right front seats backward completely.
4. Disconnect the negative (-) cable from the battery.



5. Using the micro flat-blade (pocket) screwdriver with the tip wrapped with vinyl tape, remove the cap from the shifter garnish covering the “manual” shift interlock mechanism.



NOTE:

Be careful not to damage the cap as it is fragile. If it becomes damaged, replace it with a new one.

Part Name	Part Number
Cap, Indicator	28157-57L30

6. Use the micro flat-blade (pocket) screwdriver to push the shift interlock release pin and move the shift selector to the “N” position.



7. Open the door of the instrument panel center lower box.



8. Lifting up the front edge of the console rear panel, lift up the rear edge of the black gearshift garnish.



9. There are seven (7) retaining claws that secure the gearshift garnish. These are disengaged in four stages beginning at the rear and moving forward. To disengage the front two points, apply pressure on the garnish pulling slightly back while lifting.



NOTE: Take care not to damage the positioning pins at the front and rear of the garnish.



NOTE: For the M/T model, perform steps 10 thru 34 with the gearshift garnish lifted as shown below.



10. Open the rear console door.





11. Remove the rear console panel.



12. Remove the left and right front floor console garnishes by lifting slightly at the rear edge then pulling them backward.



13. Remove the two (2) screws located at the left and right lower corners that hold the steering column cover, then remove the cover by pulling it backward and upward.





14. Remove the three (3) screws of the left floor console front panel.



15. Remove the damper from the glove box by moving it in the direction of the arrow.



16. Remove the glove box.

17. Remove the two (2) screws and one (1) clip of the right floor console front panel.



18. With the door of the center lower box open, insert hands behind the lower edge of the HVAC panel and pull outward to remove it.



19. Disconnect the harness connector at the rear of the HVAC panel.



20. Remove the two (2) screws at the base of the shifter cover



21. While pulling the floor console front panel outward, remove the screw from the center lower box, one each behind the left and right panels.





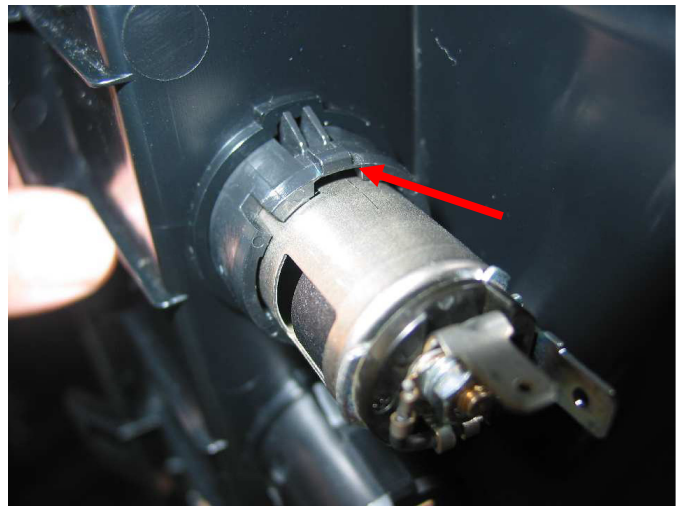
22. While pulling the left side floor console front panel outward, pull the circled part of the instrument panel center lower box backward toward you.



23. While pulling the right side floor console front panel outward, place your fingers under the right lower edge of the box as shown, then lift the center lower box out, exposing the socket connectors.



24. Remove the accessory socket connector and the USB socket connector (if equipped), and remove the instrument panel center lower box.
25. To remove the accessory socket from the box, insert the flat-blade screwdriver into the slot shown in the illustration.



26. To unlock the claw turn the blade of the screwdriver, lifting the claw outward just enough to clear the socket, then push the socket out of the collar.



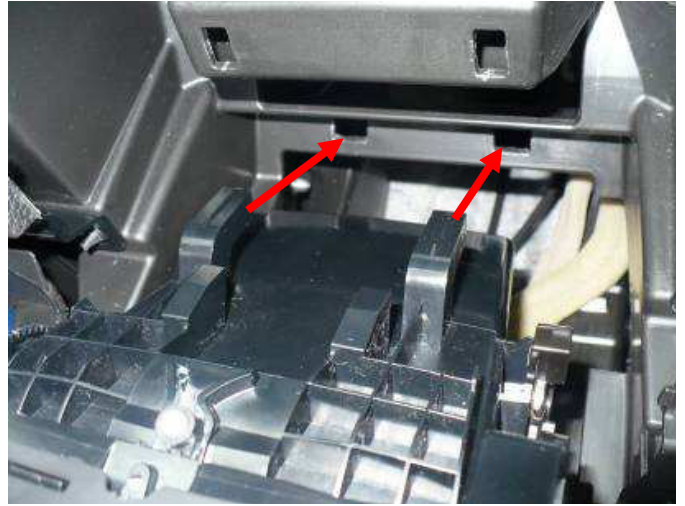
**NOTE:** Do not apply excessive force to the screwdriver holding the claw to avoid damage to the accessory socket outer cover.

27. To remove the USB socket (or cover plug if not USB equipped) press in on the two retainer claws and push out the socket.



28. Remove the accessory socket outer cover in a similar manner used for the USB socket.
29. Fit the USB socket into the new instrument panel center lower box (replacement part), aligning the projection with the cutout.
30. Fit the accessory socket outer cover into the new instrument panel center lower box (replacement part), then the accessory socket, aligning them in the same manner used for the USB socket.
31. Make sure that a rubber box liner sheet is enclosed in the new instrument panel center lower box (replacement part).

32. Position the new instrument panel center lower box (replacement part), for installation and connect the socket connector(s).
33. While pulling outward on the floor panels, align the two claws with the positioning holes.



34. Continue assembling the vehicle in the reverse order that it was taken apart.
35. After the console parts are assembled, reconnect the battery, then set the clock and audio systems as they were prior to the repair. Test the operation of the accessory socket using the customers accessory (if available) or any readily available 12V device, USB socket (if equipped) can be tested using a standard USB MP3 device or Thumb drive loaded with MP3 files, and the HVAC controls.
36. Apply the proper campaign label to the upper radiator support in an area where it will be easily seen and identified, and record your Dealer Code in the white portion of the label.

