



Great Dane Trailers

A Division of Great Dane Limited Partnership

RECEIVED

By delia.lopez at 12:27 pm, Oct 21, 2010

October 8, 2010

10V-501
(5 Pages)

Daniel C. Smith
Associate Administrator for Enforcement
Office of Defects Investigation
National Highway Traffic Safety Administration
1200 New Jersey Avenue SE
Washington, DC 20590

Re: 10E-047

Dear Mr. Smith:

This notice is being sent in accordance with the requirements of 49 CFR Part 573 of the National Highway Traffic Safety Act.

Great Dane Trailers has been advised by ArvinMeritor that a defect which relates to motor vehicle safety exists in certain ArvinMeritor MPA trailer suspension systems (Systems"). The Systems were manufactured by ArvinMeritor from April 10, 2010 through June 30, 2010, and include models MPA20, MPA38 and MPA40. The suspect Systems may have missing welds at the interface of the lower seat bracket and axle beam, which could allow the axle to roll out of position and thereby potentially impact the handling of the trailer. ArvinMeritor has advised Great Dane Trailers that they provided 292 of these suspect Systems to Great Dane Trailers from this time period.

Great Dane Trailers is in the process of determining the customer names, addresses and trailer VIN's on which these Systems were installed. Great Dane Trailers will notify the customers with the trailers affected by this recall per the attached customer notification letter as soon as it has been approved by your office and a recall number has been assigned.

If after your review of this information should you have any questions or need additional information please let us know.

Very Truly Yours,

Barry A. Mitchell
Director - Customer Service/Warranty



Great Dane Trailers

A Division of Great Dane Limited Partnership

Date

Customer

Address

Address

City, State Zip

VIN's:

Re: ArvinMeritor MPA trailer suspension system

To Whom It May Concern:

This notice is sent to you in accordance with the requirements of the National Traffic Motor Vehicle Safety Act.

Great Dane Trailers has decided that a defect that relates to motor vehicle safety exists in certain trailers based on information provided by ArvinMeritor. The defect exists in certain ArvinMeritor MPA trailer suspension systems ("Systems") manufactured and supplied by ArvinMeritor and installed on trailers with the above listed vehicle identification numbers (VIN's). The suspect ArvinMeritor MPA trailer suspension systems may have missing welds at the interface of the lower seat bracket and axle beam, which could allow the axle to roll out of position and thereby potentially impact the handling of the trailer.

To address and remedy this defect ArvinMeritor has issued Technical Bulletin TP-10172 which has been attached to this letter. Customers with trailers originally equipped with suspect Systems, per the above listed VIN's, should take their trailers to any Great Dane Trailers Branch or Dealer service facility for inspection. If it is determined that any weld is missing, the System will be repaired in accordance with TP-10172 by Great Dane Trailers authorized repair facility.

If you conclude that ArvinMeritor or Great Dane Trailers has not enabled you to remedy this condition without charge and/or in a reasonable time, a complaint may be submitted to the:

Administrator
National Highway Safety Administration
1200 New Jersey Avenue SE
Washington, DC 20590

-or-

Call the toll free Vehicle Safety Hotline: 1-888-327-4236; (TTY: 800-424-9153 or go to <http://www.safecar.gov>)

We regret any inconvenience that this situation may have caused. Great Dane Trailers and ArvinMeritor want to assure you that we are concerned for customer safety and your continued satisfaction with our products.

Sincerely,

Barry A. Mitchell
Director – Customer Service/Warranty
Great Dane Trailers

MERITOR[®]
an *ArvinMeritor* brand

Technical Bulletin

Lower Axle Seat Weld Inspection and Repair for Meritor RideSentry™ MPA Series Sliding Tandem Trailer Air Suspension Systems

Hazard Alert Messages

Read and observe all Warning and Caution hazard alert messages in this publication. They provide information that can help prevent serious personal injury, damage to components, or both.

▲ WARNING

To prevent serious eye injury, always wear safe eye protection when you perform vehicle maintenance or service.

Park the vehicle on a level surface. Block the wheels to prevent the vehicle from moving. Support the vehicle with safety stands. Do not work under a vehicle supported only by jacks. Jacks can slip and fall over. Serious personal injury and damage to components can result.

How to Obtain Additional Maintenance and Service Information

Refer to Maintenance Manual 14R, RideSentry™ MPA Series Sliding Tandem Trailer Air Suspension System; and Technical Bulletin TP-0777, Installing RideSentry™ Suspension Axle Seats onto RideStar™ RHP Series Single-Axle and Sliding Tandem Trailer Air Suspension Systems. To obtain these publications, visit Literature on Demand at arvinmeritor.com.

Inspection Procedure

1. Wear safe eye protection. Park the vehicle on a level surface. Block the wheels to prevent the vehicle from moving.
2. From underneath the trailer, inspect the lower axle seat welds as follows.
 - A. Check that there are a total of four welds per axle seat side (two lower axle seats welded on each side). Figure 1.
 - B. Verify the welds are nominally 1.5-inches (38 mm) long and 0.25-inch (6.35 mm) wide on each side of the lower axle seat onto the axle. The welds should not be more than 1.5-inches (38 mm) long. Figure 2.

- If any welds are missing or incomplete: Call ArvinMeritor's OnTrac Customer Service Center at 866-OnTrac1 (668-7221) for repair authorization. Refer to Contact the ArvinMeritor OnTrac Customer Service Center at the end of this bulletin. Once you receive authorization, perform the Weld Repair Procedure in this bulletin.

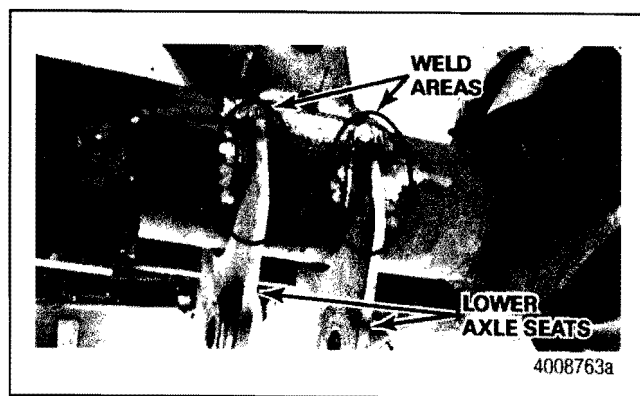


Figure 1

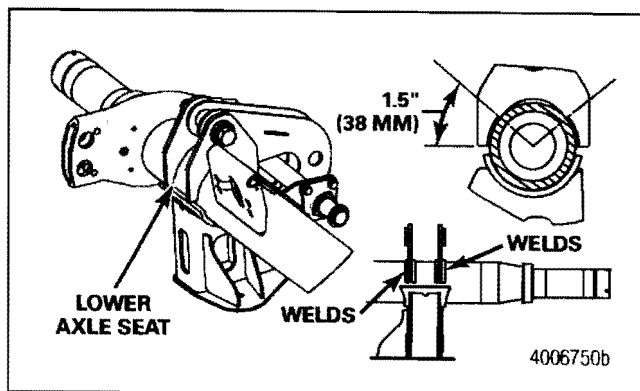


Figure 2

3. Inspect the lower axle seat welds on the other end of the axle using the same procedure.

Weld Repair Procedure

⚠ WARNING

You must follow correct welding procedures and weld at locations authorized by Meritor when you weld to suspension components. Welding at locations other than those authorized by Meritor will void the warranty and can reduce trailer axle fatigue life. Serious personal injury and damage to components can result.

Wear safe clothing and eye protection when you use welding equipment. Follow instructions provided by welding equipment manufacturers to prevent serious personal injury and damage to components.

Do not weld over the end of the lower seats. Weld repairs to the axle seat must not extend more than 1.5-inches (38 mm). Welds longer than this specification may result in premature fatigue fractures to the axle tube. Serious personal injury and damage to components can result.

1. Wear appropriate clothing and eye protection when using welding equipment. Refer to Maintenance Manual 8 for complete welding instructions.
2. Use 0.035 E70 wire and 75/25 gas to weld the missing or incomplete areas. Make each weld 1.5-inches (38 mm) long and 0.25-inch (6.35 mm) wide. Welds should not be longer than 1.5-inches (38 mm). Do not weld over the end of the lower seats. Figure 2.
3. When you have finished, verify there is a total of eight complete welds, (two lower axle seats welded on each side). Continue repairs on the other end of the axle, if necessary.

Contact the ArvinMeritor OnTrac Customer Service Center

Call ArvinMeritor's OnTrac Customer Service Center at 866-OnTrac1 (668-7221) (United States and Canada) between 8:00 AM and 8:00 PM ET Monday through Friday, and between 9:00 AM and 6:00 PM ET on Saturday. After selecting "preferred language," select "Option 7." The OnTrac representative will need the following information to give the repair facility the permission to proceed with the work. The OnTrac representative will also provide you with complete parts return information.

- Complete 17-digit vehicle identification number (VIN)
- ArvinMeritor axle model and serial number. Figure 3.
- Vehicle owner's name, address and telephone number
- Vehicle in-service date
- Repair facility's name, address and telephone number
- Repair facility's hourly rate

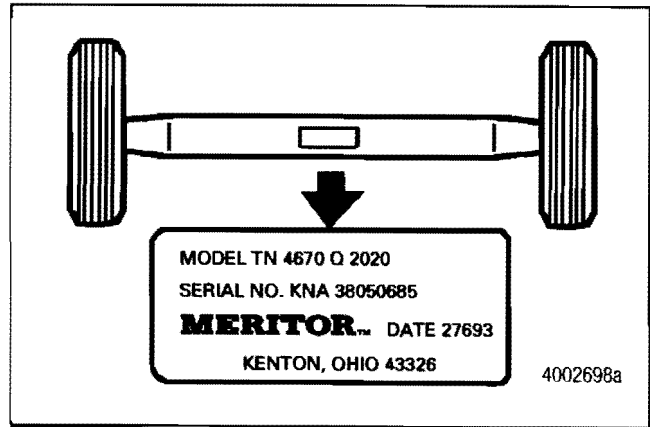


Figure 3

ArvinMeritor™

Meritor Heavy Vehicle Systems, LLC
2135 West Maple Road
Troy, MI 48064 USA
866-OnTrac1 (668-7221)
arvinmeritor.com

Information contained in this publication was in effect at the time the publication was approved for printing and is subject to change without notice or liability. Meritor Heavy Vehicle Systems, LLC, reserves the right to revise the information presented or to discontinue the production of parts described at any time.

Copyright 2010
ArvinMeritor, Inc.
All Rights Reserved

Printed in USA

TP-10172
Issued 09-10
(16579)