

RECALL BULLETIN 09V-337

DATE: October 5, 2009
 MODEL YEAR: 2007 & 2008
 CHASSIS MODEL: UD3300 with Locally Installed DUAL STEERING
 BULLETIN NUMBER: 09V-337

FILE IN THE STEERING SECTION OF THE TECHNICAL BULLETIN BINDER

VOLUNTARY SAFETY RECALL CAMPAIGN NUMBER 09V-337 STEERING STOP ADJUSTMENT

MODELS AFFECTED

Certain 2007 & 2008 MY UD3300 model vehicles within the vehicle identification ranges listed below were modified with a locally installed dual steering system by either Pioneer Drive LLC or Fontaine Modification Co as Intermediate Manufactures.

Listed below is the Vehicle Identification range and the total number of vehicles involved for each year model.

NUMBER	YEAR	STARTING SEQUENCE	THRU	ENDING SEQUENCE
5	2007	JNAPC80L37AE60049	—	JNAPC80L27AH60150
89	2008	JNAPC81L98AE70116	—	JNAPC81L38AE70213

DESCRIPTION

The steering drag link directional installation and the stop adjustment on the listed VIN's may be incorrect and may allow the tire to contact the right steering drag link during a full left turn. The incorrect steering stop adjustment may also cause damage to the drag link from tire contact.

Repairs to correct this condition consist of inspecting the right drag link and adjusting the steering stops.

Owners of the involved vehicles will be notified by mail and instructed to schedule an appointment with an authorized UD Truck Dealer to have this Safety Recall performed at no charge.

The National Highway Traffic Safety Administration has assigned the identification number 09V-337 to this Safety Recall. This number must appear on all communications and documentation of any nature that refer to the campaign described in this bulletin.

ADMINISTRATION / DEALER RESPONSIBILITY

Proceed immediately to make the necessary repairs to the involved vehicles in unsold/undelivered dealer inventory. **It is a violation of federal law for a dealer to deliver a new or used motor vehicle covered by a recall notice until the recall remedy has been performed.** Owners of the vehicles identified in this recall bulletin will receive an "Authorization for Recall Notification Service" card.

ADMINISTRATION / DEALER RESPONSIBILITY CONT

This postage pre-paid card must be filled out correctly and returned to the address on the card indicating whether the vehicle was repaired, transferred, sold, etc. (refer to the UD Warranty Policies & Procedures Manual, Part III, Section 1). For vehicles that are received without an "Authorization for Recall Service" card, check the Vehicle Service Notification screen of the NDAINET Warranty Claim System menu.

Federal regulations require that all vehicle lessors must notify all lessees within ten (10) days of receiving this notice.

PARTS INFORMATION

Repair parts are available through normal UD Truck repair parts procedures.

Description	Part Number	Quantity (If Required)
Drag link (RH)	4851030Z04	1

REQUIRED TOOLS

17 mm box wrench

24 mm box wrench

Inch measurement tape

Inch measurement depth gauge

36 mm socket (only required when replacing drag link)

SERVICE INFORMATION

Before servicing the vehicle, read the entire set of instructions first. Observe the following safety precautions to prevent personal injury, damage to property, or both:

- If the involved vehicle has a label on the inside of the driver's left door as shown in Figure A, the recall has already been performed and no further action is required.
- If the involved vehicle does not have the label on the inside of the driver's door, verify through the Vehicle Service Notification screen of the NDAINET system that the recall is required. Complete the safety recall according to the following instructions.

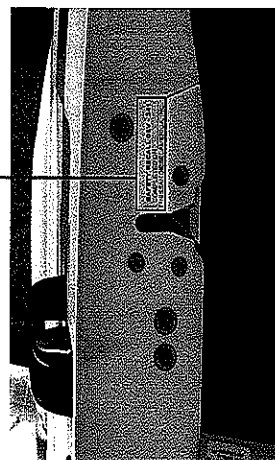


Figure A

SAFETY RECALL 09V-337
COMPLETED ON
NISSAN DIESEL AMERICA, INC.

- Park the vehicle on a flat surface, place the transmission in NEUTRAL, set the parking brake and chock the rear wheels.

SERVICE PROCEDURE

Step 1) Inspect the RIGHT side drag link.

- A) The drag link should be installed with the directional arrow and part number label facing the front of the truck. The label may be covered with road dirt and the arrow not visible. The drag link is installed correctly if the label is positioned towards the front of the truck and steering gear. See figure B.

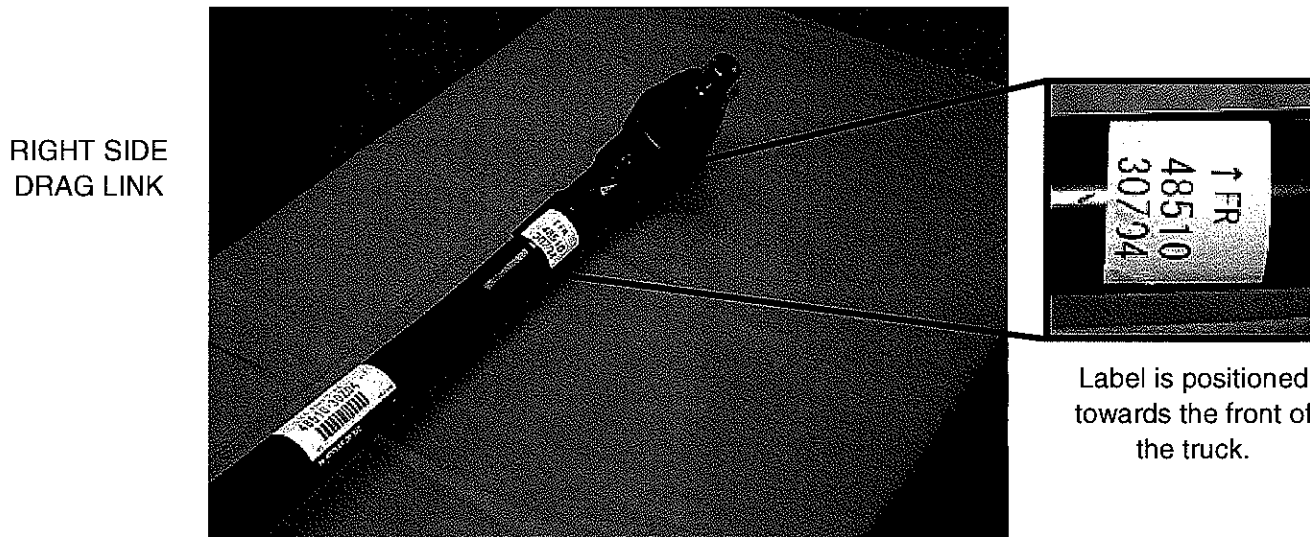


Figure B

- B) If the drag link is installed correctly proceed to step 2.
- C) If the drag link is installed incorrectly remove the drag link and reinstall in the correct direction as shown in Figure B. Torque the nuts to 159 -253 lb.ft. and install the cotter keys.
- D) If the drag link has been damaged by contact with the tire, install a new drag link part number **4851030Z04**.
- E) Install the new drag link with the directional arrow facing the front of the truck. Torque the drag link nuts 159 -253 lb.ft. and install the cotter keys.

Step 2) Adjust the steering stops

A) LEFT SIDE STEERING STOP ADJUSTMENT

- 1) Adjust the steering stop bolt to protrude 15/16 inch from the top of the jamb nut to the top of the stop bolt hex. See Figure C insert.
- 2) Start the engine. The engine must be running and the tires on the ground to verify correct tire to drag link clearance.
- 3) Sitting in the **RIGHT** side drivers seat turn the steering wheel all the way to the **LEFT** and verify that there is a minimum of 1½ inch clearance from the inside of right front tire to the drag link as shown in Figure D.
IMPORTANT: You must use the **RIGHT** side steering position to verify the minimum clearance of 1½ inch.
- 4) If the clearance is not 1½ inch adjust the stop bolt out further until the required 1½ inch clearance is achieved.
- 5) Torque the steering stop jamb nut to 101-123 lb.ft.

SERVICE PROCEDURE (CONT.)

Step 2 con't)

A) LEFT SIDE STEERING STOP ADJUSTMENT CON'T

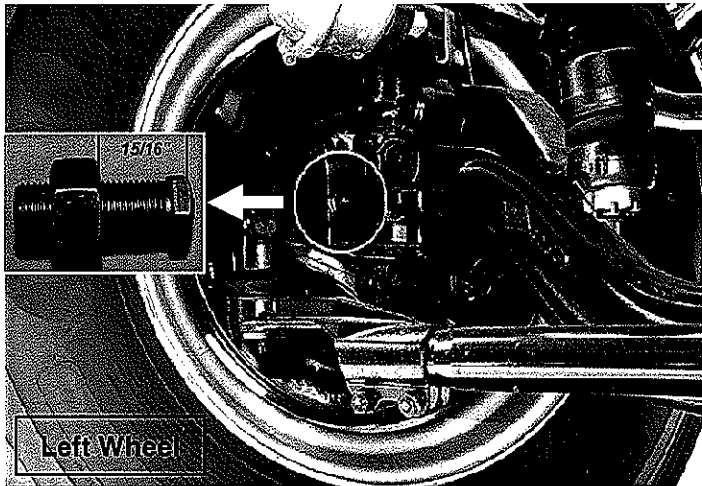


Figure C

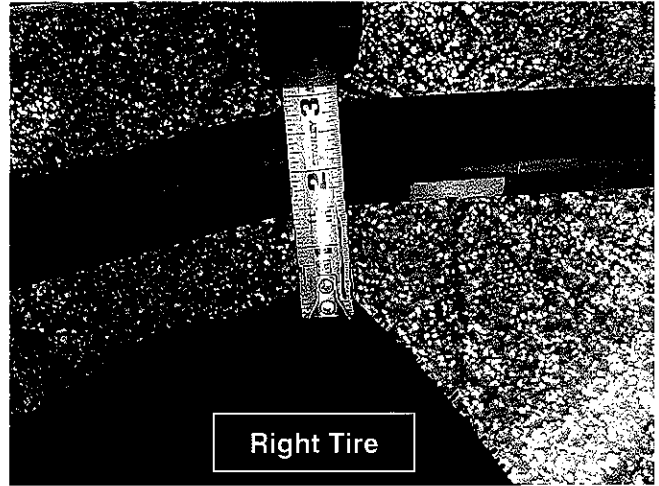


Figure D

B) RIGHT SIDE STEERING STOP ADJUSTMENT

- 1) Adjust the steering stop bolt to protrude $15/16$ inch from the top of the jamb nut to the top of the stop bolt hex. See Figure E insert.
- 2) Start the engine. The engine must be running and the tires on the ground to verify correct tire to drag link clearance.
- 3) Sitting in the **LEFT** side drivers seat turn the steering wheel all the way to the **RIGHT** and verify that there is a minimum of $1\frac{1}{2}$ inch clearance from the inside of the **LEFT** front tire to the drag link. See Figure F.
IMPORTANT: You must use the **LEFT** side steering position to verify the minimum clearance of $1\frac{1}{2}$ inch.
- 4) If the clearance is not $1\frac{1}{2}$ inch adjust the stop bolt out further until the required $1\frac{1}{2}$ inch clearance is achieved.
- 5) Torque the steering stop jamb nut to 101-123 lb.ft.

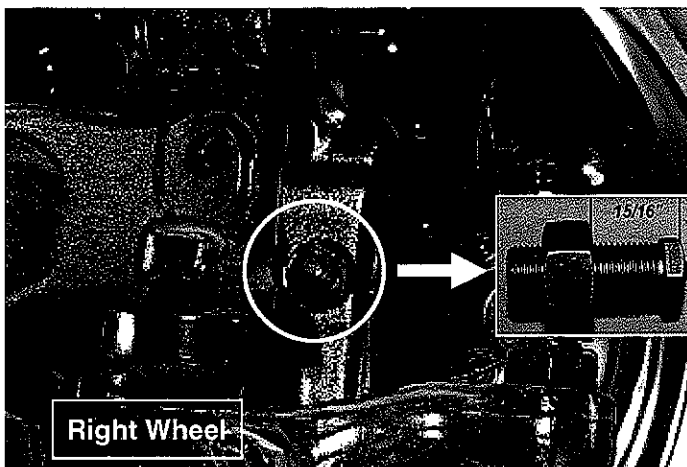


Figure E

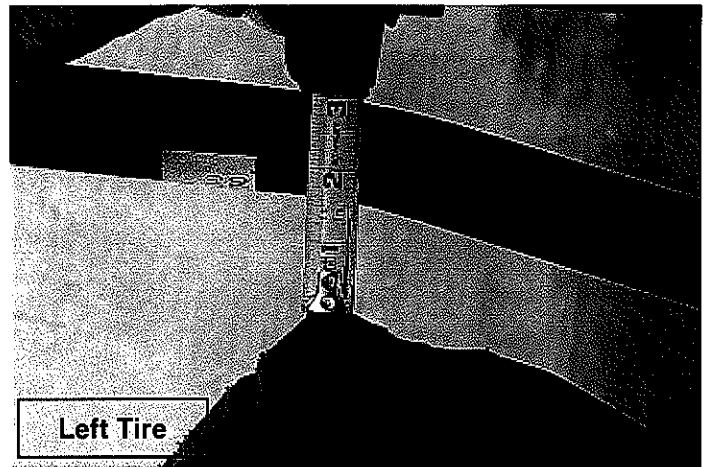


Figure F

SERVICE PROCEDURE (CONT.)

Step 3) Record the completion date on the Safety Recall 09V-337 sticker as shown in Figure G and apply to the driver's left side door as shown in Figure A on page 2.



Figure G

WARRANTY INFORMATION

Expenses for the repairs described in this Safety Recall are to be recovered through the standard UD Warranty Claim procedures listed in the UD Warranty Policies & Procedures Manual, Part V. Use the following information to prepare your claims:

WARRANTY CODE	KV03
TROUBLE CODE	652A2379
FAILED PART NUMBER/NAME	4005600Z05
REPAIR DESCRIPTION	PERFORM SAFETY RECALL 09V-337
LABOR OPERATION	678A
LABOR TIME ALLOWED	1.0 HR Inspect drag link and adjust both steering stops ADD 0.5 HR to Remove & reinstall or replace drag link
PARTS DISPOSITION	Save all replaced parts as outlined in the WP&PM Part V, Section 3
