

Haldex

service Bulletin

Haldex

Quick Release Valve Replacement Instructions

The quick release valve (QRV) may be located in several different places, depending on the make and model of vehicle. Please refer to an air system schematic diagram for the particular vehicle to determine where the quick release valve is installed in the vehicle air system.

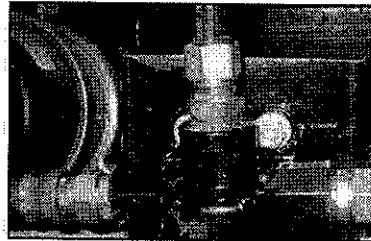
CAUTION: Block vehicle wheels. Take proper precautions when working with compressed air. Drain all air pressure from the air system and wear safety glasses before beginning any service.

Step 1

Locate the QRV(s) on the vehicle.

Fig. 1 shows a QRV as it is typically installed on the frame.

Fig. 1

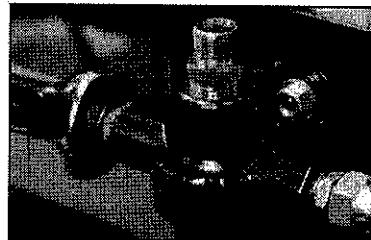


Step 2

Remove all of the hoses from the Supply and Delivery Ports of the valve. Mark/identify hoses as they are removed to assure proper reassembly.

Fig. 2 shows removal of the hoses.

Fig. 2

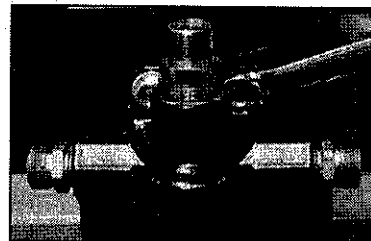


Step 3

Remove the bolts holding the QRV to the vehicle and remove the valve from the vehicle. Haldex recommends replacing the bolts.

Fig. 3 shows removal of the bolts.

Fig. 3



Quick Release Valve Replacement Instructions Continued On Reverse Side →

Haldex

Quick Release Valve Replacement Instructions Continued

Step 4

If required, assemble the appropriate size D.O.T.-approved fittings into the new QRV. Haldex recommends lightly coating the threads of the new fittings with a PTFE (Teflon) thread sealant. Do NOT use Teflon tape. Torque the fittings to a range of 75 to 200 in-lbs.

Fig. 4 shows installation of the fittings.

Fig. 4



Step 5

Install the QRV onto the vehicle with 5/16 inch bolts. Recommended bolt torques:

- 5/16"-18 Grade 5 bolts = 17 ft-lbs
- 5/16"-24 Grade 5 bolts = 19 ft-lbs
- 5/16"-18 Grade 8 bolts = 24 ft-lbs
- 5/16"-24 Grade 8 bolts = 27 ft-lbs

Fig. 5 shows the QRV being mounted onto the vehicle.

Fig. 5



Step 6

Install the vehicle air hoses onto the valve. Use wrenches on both the fitting and the hose to make certain that fitting torques into the QRV remain in the range of 75 to 200 in-lbs.

Fig. 6 shows a hose being connected.

Fig. 6



Step 7

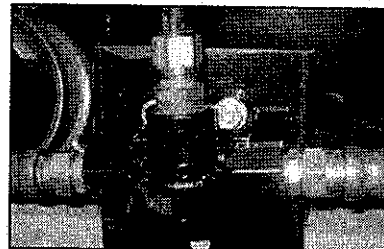
Verify that all connections are tight.

Pressurize the air system and check the connections for leaks.

Check the brake system for proper operation before driving the vehicle. Road test the vehicle.

Fig. 7 shows a correctly replaced Quick Release Valve.

Fig. 7



Haldex Commercial Vehicle Systems

Haldex Brake Products Corporation
10520 N. Pomona Avenue
Kansas City, MO 64158
Phone: 816-893-2470
Fax: 816-891-8447

Haldex Limited
425 Southgate Drive, Unit 1
Guelph, Ontario Canada N1G 0W4
Phone: 519-828-7773
Fax: 519-828-8487

www.haldex.com

US 3709 270 IN-HOUSE

Haldex

servico Bulletin

Haldex

Haldex Quick Release Valve Date Code Identification

The specification used by Haldex to identify Quick Release Valves defines a six (6) character alpha numeric date code. The first three (3) digits indicate the Gregorian Calendar day of the year. The fourth alpha character indicates the production shift. The fifth digit indicates the last number of the year of manufacture. The last alpha character indicates the manufacturing location.

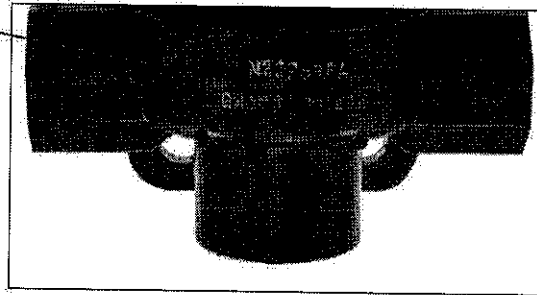
The Date Code on the Haldex QRV Valve shown here indicates:

Gregorian Date -183 (July 1st)

Shift - A (First Shift)

Year - 8 (2008)

Location - K (Iola, Kansas)



Shift and Location indicators used by Haldex on Quick Release Valves:

| Shift | Location | |
|------------|-------------------------------|----------------------------|
| A = First | A = Apodaca, Mexico | M = Grand Haven, Michigan |
| B = Second | B = Blue Springs, Missouri | N = Marion, North Carolina |
| C = Third | C = Lang Fang, China (ASIMCO) | S = Landskrona, Sweden |
| | G = Heidelberg, Germany | T = Paris, Tennessee |
| | H = Hungary | U = Redditch, U.K. |
| | K = Iola, Kansas | Z = Suzhou, China |

Haldex Commercial Vehicle Systems

Haldex Brake Products Corporation
13030 N. Portonia Avenue
Kansas City, MO 64130
Phone: 816-851-2470
Fax: 816-951-0417

Haldex Limited
225 Southgate Drive, Unit 1
Guelph, Ontario Canada N1G 5W6
Phone: 519-826-7728
Fax: 519-826-5597

www.haldex.com

US 3/09 270 IN-HOUSE