



BLUE BIRD

FINAL NOTICE

DATE: JUNE 22, 2010

TO: BLUE BIRD OWNERS

**SUBJECT: RECALL R09PD INCORRECT BOLTS AND/ OR SPACERS IN
ENGINE COOLING FAN**

According to our records, we have not received a response that the above referenced recall notification dated April 07, 2009 pertaining to certain 2008 through 2009 model year Blue "Vision" model school buses indicating Recall R09PD has been completed on your affected buses. Your affected buses are identified by Blue Bird body number on the enclosed yellow reply sheet for Recall R09PD.

If this is the first time you received notification of Recall R09PD, please read the notification carefully and follow the instructions provided.

If you have already made the changes as outlined in the attached Recall R09PD notification, please complete and mail the enclosed pink reply sheet to us in the enclosed postage paid pink reply envelope so we may update our recall records. **Be sure to include your Blue Bird body number and the date repaired.**

Thank you for your prompt attention to this matter.

Sincerely,

Bill Coleman
Corporate Recall Administrator
BLUE BIRD BODY COMPANY



R09PD

April 07, 2009

Dear Blue Bird Owner:

This notice is sent to you in accordance with the requirements of the National Traffic and Motor Vehicle Safety Act.

Blue Bird has decided that a defect which relates to motor vehicle safety exists on certain 2008 and 2009 model year "Vision" conventional school buses manufactured from January 18, 2007 through October 29, 2008 and equipped with Caterpillar C7 and C7 07 engines.

On the subject buses, incorrect bolts may have been installed to attach the fan blade to the fan clutch. On some of the buses incorrect spacers may also have been installed. As a result, the fan blade may separate from the clutch and potentially cause property damage or personal injury to persons in or near the front of the bus. Blue Bird is conducting a recall to correct this defect.

Buses with this defect must be modified according to the enclosed instructions for Recall R09PD. A qualified technician should perform Recall R09PD or you may contact your Blue Bird dealer for assistance.

Your Blue Bird bus(es) affected by this recall are identified by body serial number(s) on the enclosed reply sheets. If you no longer own the subject bus(es), please complete the appropriate section of the pink reply sheet and return to Blue Bird in the enclosed pink postage prepaid envelope.

NOTE: If Service Bulletin S08NR has already been completed on your bus(es) no further action is required.

Replacement bolts for Recall R09PD are enclosed with this notification so replacement bolts, if needed, can be installed at time of inspection.

Labor time to inspect for correct bolt and spacer installation is 0.1 hrs (6 minutes) per bus.

Labor time to install replacement bolts and spacer, if needed, is 0.4 hrs (24 minutes) per bus.

If the spacer is incorrect, you will need to contact Blue Bird Recall Administration at 478-822-2242 to obtain a replacement spacer. Owners will need to provide the body numbers for each bus requiring a replacement spacer.

Reimbursement for labor may be obtained by completing the **pink** request for reimbursement sheet provided and returning it to Blue Bird in the enclosed **pink** postage prepaid envelope.

If the modifications directed by this notification were performed on your bus prior to the receipt of this recall notification, complete and sign the recall reply sheet and attached a copy of the work order/invoice. Mail the documents in the **pink** self-addressed postage paid envelope included with the recall notification to Blue Bird for warranty consideration. Reimbursements will be made in accordance with the requirements of the National Highway Transportation Safety Act, Title 49 Code of Federal Regulations, Parts 573 and 577.

Federal law requires that any vehicle lessor receiving this recall notice must forward a copy of this notice to the lessee within ten days.

If Blue Bird Body Company should fail to or is unable to remedy this condition without charge to you, you may contact:

**ADMINISTRATOR
NATIONAL HIGHWAY TRAFFIC SAFETY ADMINISTRATION
1200 NEW JERSEY AVENUE, SE
WASHINGTON, D.C. 20590**

Or, you may call The National Highway Traffic Safety Administration toll free at:

1-888-327-4236
TTY 1-800-424-9153

Or, go to: [HTTP://WWW.SAFERCAR.GOV](http://WWW.SAFERCAR.GOV)

Questions regarding this recall campaign should be directed to me at (478) 822-2242.

Thank you,



Bill Coleman
Corporate Recall Administrator
BLUE BIRD CORPORATION



Fan Clutch Spacers

MODELS AFFECTED: 2008-2009 BBCV Visions w/ 2007 Cat Engines

RECALL

ISSUE

Fan may separate from fan clutch and may damage fans blades, fan clutch, radiator, hoses and other surrounding components.

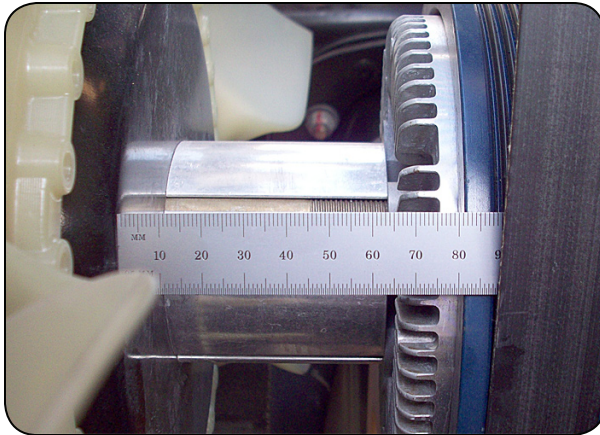
CORRECTIVE ACTION

Inspect fan spacer length and install new spacer and bolts as required.

WARNING Always follow all Federal, State, Local, and Shop safety standards and use proper safety equipment when performing this procedure.

INSPECTION

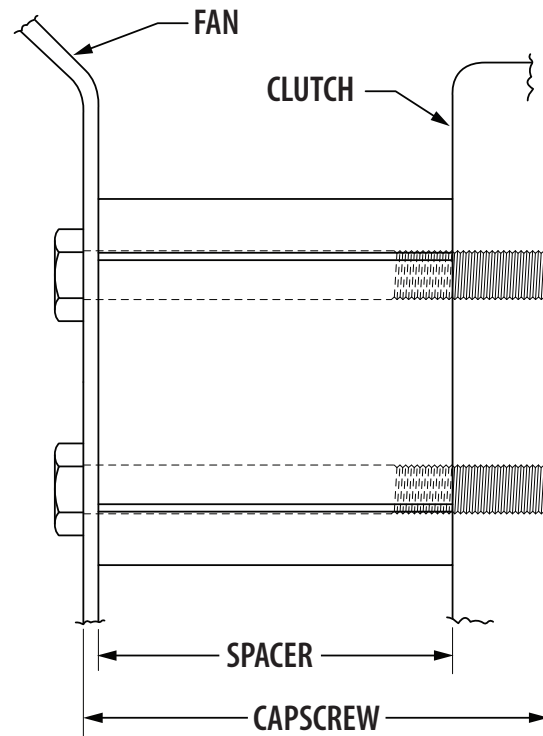
- 1** Park vehicle on a level surface, apply parking brake, turn engine off, remove ignition key and chock wheels.
- 2** Disconnect batteries.
- 3** Open engine hood.
- 4** Measure the length of the spacer between the fan blade and the fan clutch. See Diagram and Chart to the right for correct installations and determine procedure needed.



Inspection

PROCEDURE 2 (with wrong spacer and wrong capscrews)
 For CAT C707 with CGI & DPF, and a 52.8mm (2 5/64 inch) spacer.
 Note: Caterpillar C707 with CGI and DPF has a Regen switch mounted on the entrance door side fire wall.

PROCEDURE 3 (with wrong spacer and wrong capscrews)
 For CAT C7 without CGI & DPF, or Export unit; with a 66.7mm (2 5/8 inch) spacer.



PROCEDURE 1 (with correct spacer and wrong capscrews)
 For CAT C707 with CGI & DPF, and a 66.7mm (2 5/8 inch) spacer.
 Note: Caterpillar C707 with CGI and DPF has a Regen switch mounted on the entrance door side fire wall.

NOTE: CAT C707 engines are equipped with Clean Gas Induction (CGI) and a Diesel Particulate Filter (DPF). CAT C7 and Export units are not equipped with CGI and DPF.

ENGINE	SPACER	CAPSCREW
CAT C707 with CGI & DPF	66.7mm (2 5/8 inches)	90mm M10-1.5 X 90mm
CAT C7 or Export without CGI & DPF	52.8mm (2 5/64 inches)	70mm M10-1.5 X 70mm

R09PD

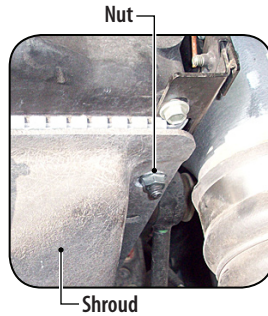
S E R V I C E R E C A L L



PROCEDURE 1 (With correct spacer and wrong capscrews.)

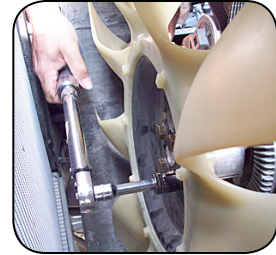
For CAT C707 with CGI & DPF, and a 66.7mm (2 5/8 inch) spacer.
Note: Caterpillar C707 with CGI and DPF has a Regen switch mounted on the entrance door side fire wall.

1 Remove and retain the four nuts attaching the fan shroud to the radiator. Slide the shroud rearward for access to the four capscrews attaching the fan to the fan clutch.



2 Remove the four 80mm capscrews and discard. Retain the four lock washers.

3 Install four 90mm capscrews (Blue Bird #10000385) with four lock washers and torque to 20-25 lb. ft. Note: Four 90mm capscrews (Blue Bird #10000385) shipped with original Service Bulletin.



4 Slide fan shroud forward and reattach with four nuts removed in step one.

5 Close engine hood.

6 Reconnect batteries and place the bus back in service.

PARTS LIST

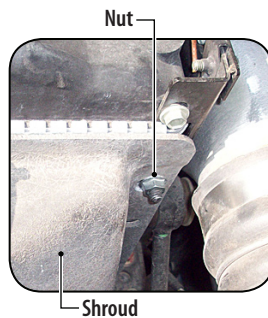
PART NUMBER	QUANTITY	DESCRIPTION
10000385	4	*Capscrew, Hex head, M10-1.5 x 90mm*

Supplied with original Service Bulletin.

PROCEDURE 2 (With wrong spacer and wrong capscrews.)

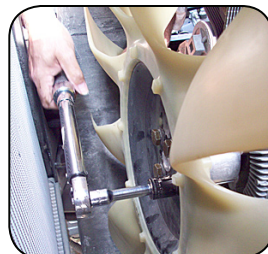
For CAT C707 with CGI & DPF, and a 52.8mm (2 5/64 inch) spacer.
Note: Caterpillar C707 with CGI and DPF has a Regen switch mounted on the entrance door side fire wall.

1 Remove and retain the four nuts attaching the fan shroud to the radiator. Slide the shroud rearward for access to the four capscrews attaching the fan to the fan clutch.



2 Remove and discard the four 80mm capscrews and spacer. Retain the four lock washers.

3 Install new Spacer (Blue Bird #10005240) with four 90mm capscrews (Blue Bird #10000385) and four lock washers. Torque to 20-25 lb. ft.



4 Slide fan shroud forward and reattach with four nuts removed in step one.

5 Close engine hood.

6 Reconnect batteries and place the bus back in service.

PARTS LIST

PART NUMBER	QUANTITY	DESCRIPTION
10005240	1	Spacer, Clutch, Fan, Horton, 00115258
10000385	4	**Capscrew, Hex head, M10-1.5 x 90mm**

Order only if not provided

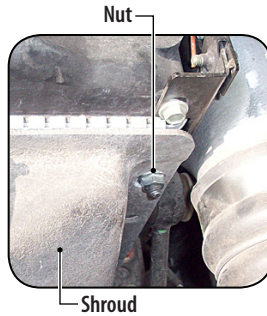
R09PD SERVICE RECALL



PROCEDURE 3 (Export only with wrong spacer and wrong capscrews.)

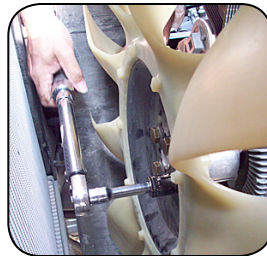
For CAT C7 without CGI & DPF, or Export unit; with a 66.7mm (2 5/8 inch) spacer.

1 Remove and retain the four nuts attaching the fan shroud to the radiator. Slide the shroud rearward for access to the four capscrews attaching the fan to the fan clutch.



2 Remove and discard the four capscrews and spacer. Retain the four lock washers.

3 Install new Spacer (Blue Bird #10005241) with four 70mm capscrews (Blue Bird #01265990) and four lock washers. Torque to 20-25 lb. ft.



4 Slide fan shroud forward and reattach with four nuts removed in step one.

5 Close engine hood.

6 Reconnect batteries and place the bus back in service.

PARTS LIST

PART NUMBER	QUANTITY	DESCRIPTION
10005241	1	Spacer, Clutch, Fan, Horton, 00068057
01265990	4	Capscrew, Hex head, M10-1.5 x 700mm

R09PD
S E R V I C E R E C A L L