



KPPS Adjustable Brake Pedal Work Instructions

January 2010

Recall # 09V-496

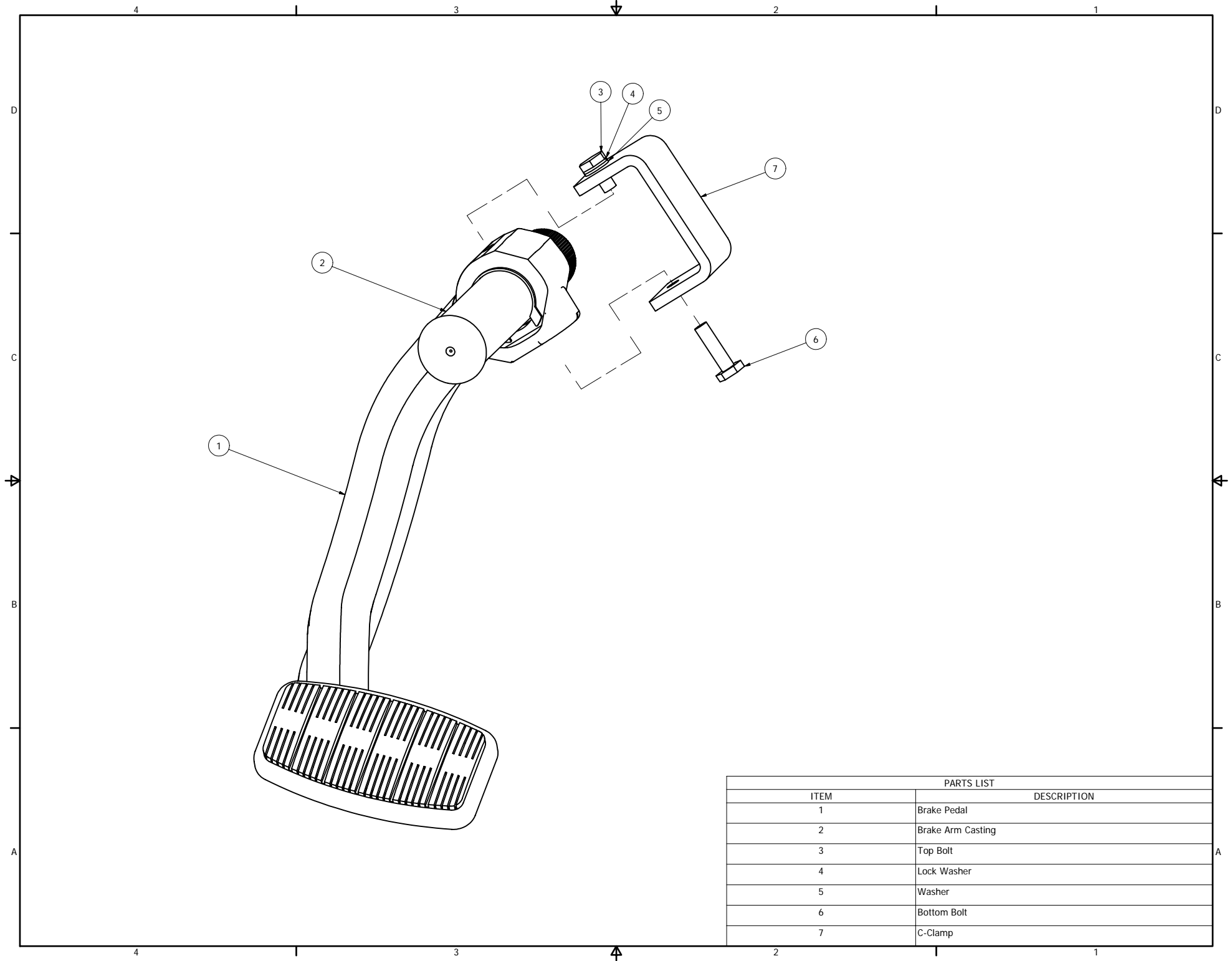
Models Affected: All Allegro Buses built on a PowerGlide chassis from May 1, 2007 through December 31, 2009.

Inspection / Installation

1. Park the vehicle on a level surface, set the park brake, shut down the engine, and chock the tires.
2. Check the brake pedal to see if a C-clamp has been installed. Refer to the attached diagram. If a clamp is already installed, no work is necessary. If a clamp has not been installed proceed to step 3.
3. Install the C-clamp assembly by placing the top bolt (short bolt with lock washer) into the guide hole at the top of the brake arm casting as shown in the attached illustration. Make certain to rotate the assembly clockwise so that the C-clamp is against the brake arm casting. Use a torque wrench and tighten the bottom bolt to 40 ± 5 lbf-in.
4. Remove the chocks from the tires.

Claim Submission

Submit a warranty claim or invoice to Tiffin Motorhomes for a total of \$32.00. Be sure and put 09V496 in the authorization / PO field on your claim or invoice. If filing on a Tiffin claim form, use 9812RC01 as your flat rate code.



PARTS LIST	
ITEM	DESCRIPTION
1	Brake Pedal
2	Brake Arm Casting
3	Top Bolt
4	Lock Washer
5	Washer
6	Bottom Bolt
7	C-Clamp