



RECALL #09V-462

MODEL: MVP-EF

SUBJECT: ACCELERATOR PEDAL MOUNTING BRACKET REPLACEMENT

PAGE: 1 OF 5

**IMPORTANT: READ ENTIRE PROCEDURE BEFORE BEGINNING.**

1. Chock wheels.
2. Make sure the ignition key is in the "OFF" position and disconnect the batteries.
3. Disconnect the wiring harness from the accelerator pedal assembly. **Figure 1**

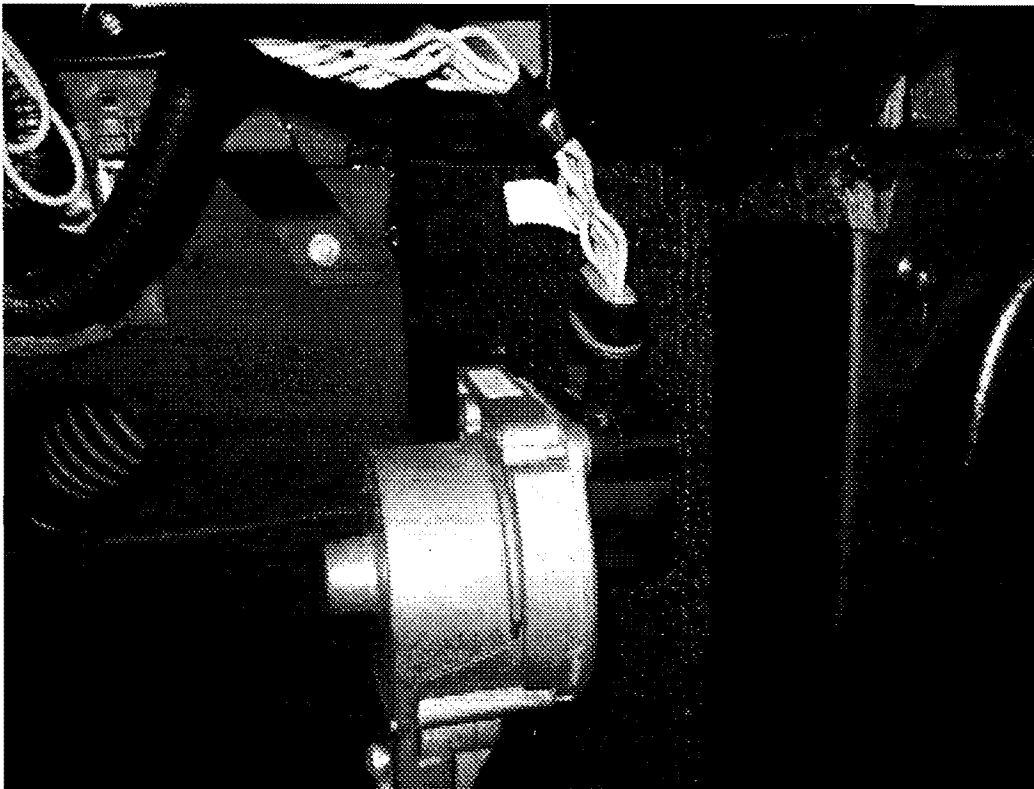


FIGURE 1

REPAIR PROCEDURE

4. Open both windshield wiper access doors. Pull the top of the radiator grill out until it stops by the catch hook. Pull up on the grill to unhinge the bottom and remove the grill. **Figure 2**

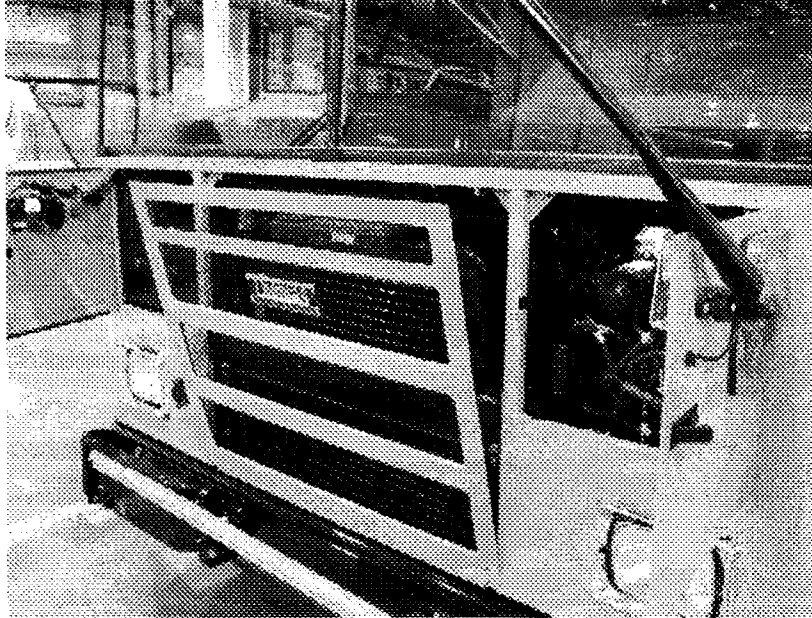


FIGURE 2

5. Pull back the upper, driver's side radiator shroud to access the mounting hardware for the accelerator pedal assembly. **Figure 3**

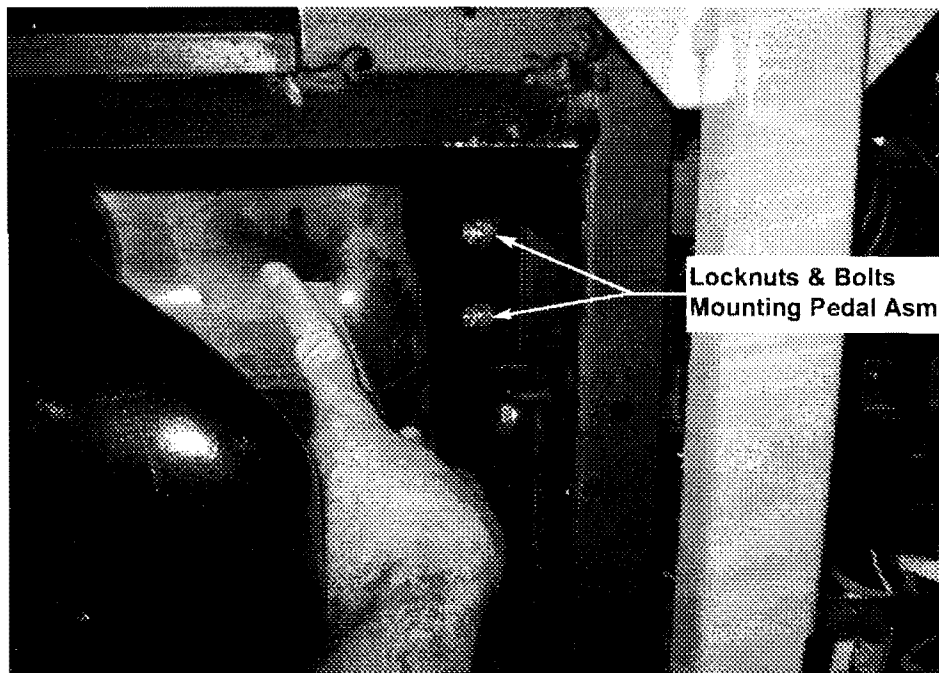


FIGURE 3

6. With the bolts held from the inside, remove the locknuts and washers mounting the pedal assembly and retain for reuse. The pedal assembly can now be removed from the inner cowl. Retain bolts for reuse.
7. Remove the two 1/4" screws securing the mounting plate and discard the original mounting plate. Assemble the replacement Accelerator Mounting Plate, #TBB 164703 with the original screws. **Figure 4**

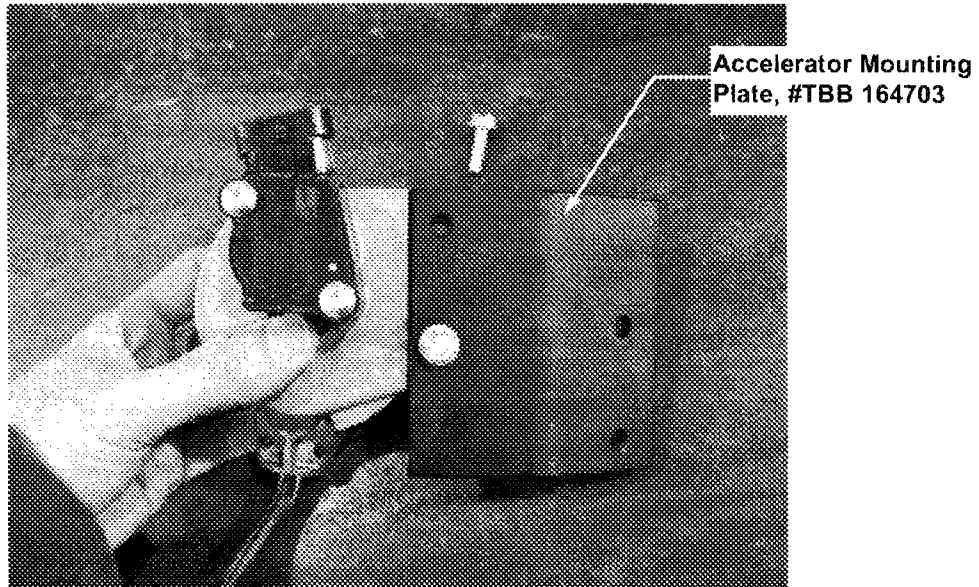


FIGURE 4

8. At the accelerator mounting location inside the cowl, trim an additional 3/4 of an inch up away from the sound abatement. This will insure solid mounting of the taller pedal mounting plate. **Figure 5**

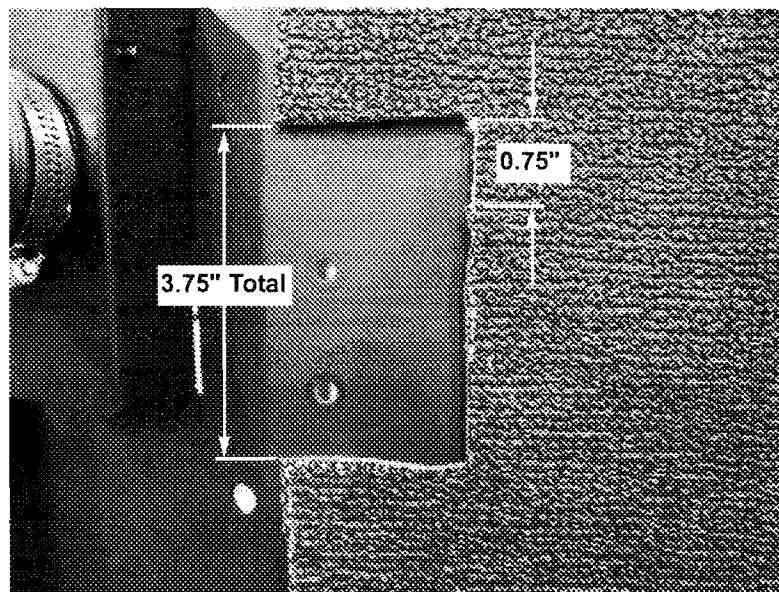


FIGURE 5

9. Reinstall the accelerator pedal assembly using the original hardware and torque locknuts to 6 ft-lbs. (Figures 6 & 7) Reconnect the wiring harness.

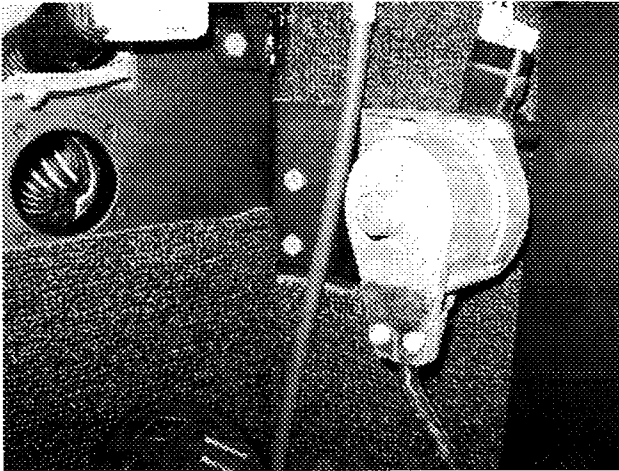


FIGURE 6

**NOTE:**  
LOCKING PLIERS AND  
STOP BLOCK CAN AID A  
SINGLE TECHNICIAN  
START AND TORQUE  
HARDWARE.

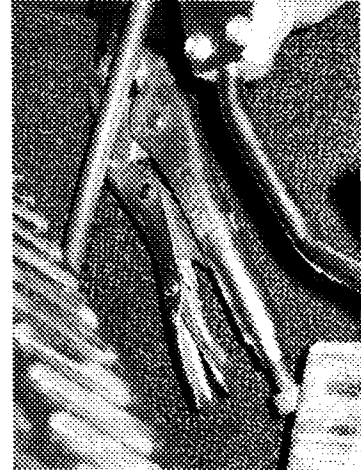


FIGURE 7

10. Verify the accelerator pedal does not make contact with the floor when fully depressed. **Figure 8**
11. Reconnect batteries and remove chocks; test for proper operation.



FIGURE 8

**MATERIALS REQUIRED:**

<b><u>PART NUMBER</u></b>	<b><u>QTY.</u></b>	<b><u>DESCRIPTION</u></b>
TBB 164703	1	PLATE - HANGER, ELECTRIC ACCELERATOR PEDAL