

MOTORCYCLE	10/7/09	M2009-032R
------------	---------	------------

Technical BULLETIN

©2009 YAMAHA MOTOR CORPORATION, U.S.A.

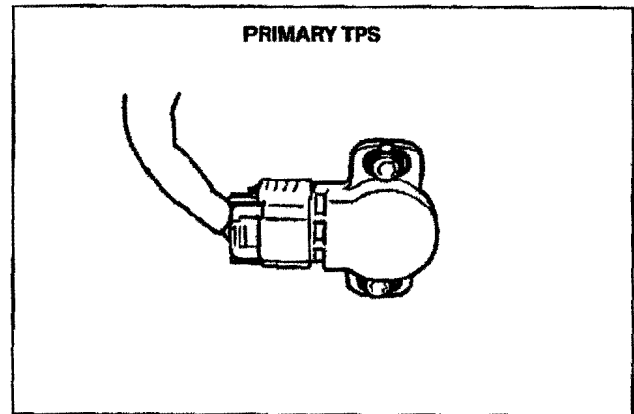
SAFETY RECALL This modification has top priority. This bulletin must be performed immediately to ensure customer safety.
 NOTE: Bulletins that announce a recall will have an "R" at the end of the bulletin number.

2005 FZ6, YZF-R1, AND FJR1300 FACTORY MODIFICATION CAMPAIGN – Unstable Engine Idling

i INTRODUCTION

Yamaha Motor Corporation, U.S.A. has decided that a defect which relates to motor vehicle safety exists in certain 2005 FZ6 (FZS600T), in certain 2005 YZF-R1 (YZF-R1T/TC) motorcycles, and also in certain 2005 FJR1300 (FJR13TC) motorcycles.

In affected motorcycles, an improperly designed Throttle Position Sensor (TPS) could cause an intermittently unstable idle when the engine is at idling speed, such as when the motorcycle is stopped or during low-speed operation. The engine could stall. If this occurs while the motorcycle is being ridden, there could be a crash resulting in injury or death.



To correct this defect, Yamaha is initiating a Factory Modification Campaign. Unmodified affected motorcycles must have TPS replaced with a one of a new design.

Yamaha is notifying all registered owners of unmodified affected motorcycles by mail. A copy of this letter is included in this bulletin. The customer should take the letter along with the affected motorcycle to an authorized Yamaha dealer for the modification.

A computer report listing all affected motorcycles invoiced to your dealership is included with this bulletin. Use the list to help ensure all motorcycles are modified. All sold motorcycles that have been registered with Yamaha will show the customer's name and address. Your dealership must notify the owner of any affected motorcycle that was actually sold but is listed as "unsold" in the report.

You must modify all affected motorcycles in your inventory as well as all customer-owned motorcycles brought to you for this service. If you purchase a motorcycle from another dealer, check to see if the procedures in this bulletin have already been performed before you sell the motorcycle.

Motorcycles that are affected should not be operated until they are modified. It is a violation of Yamaha policy for your dealership to deliver any affected motorcycles to customers until the procedures in this bulletin are performed.

When the modification on each motorcycle is performed, follow the Warranty Information section of this bulletin to receive reimbursement. Be sure to use the Factory Modification Campaign procedures in Chapter 7 of the **Warranty and Y.E.S. Handbook (LIT-11760-00-08)**.



DEALER ACTION SUMMARY

All Units: Replace the TPS on all units in the affected range, whether or not unstable idle has been experienced. A letter is being mailed to all registered customers. A copy of the letter is included in this bulletin. Please contact any customers whose units were registered for warranty after 10/6/09. Before beginning the modification, verify that the modification has not been performed already by checking YDS and the motorcycle (refer to *Identification Procedure* section, page 3).

Parts

Required: Yes, order one TPS per unit.

Warranty: Factory Modification Campaign. See the *Warranty Information* section of this bulletin. This modification applies to all affected units not previously modified regardless of ownership or warranty status.



AFFECTED RANGE

Only certain specific units are affected. Check this list carefully to be sure a unit is included in the recall before performing the modification.

2005 FZS600T

RJ08E-0004782~0004788
 RJ08E-0004790
 RJ08E-0004793~0004796
 RJ08E-0004801
 RJ08E-0004803
 RJ08E-0004804
 RJ08E-0004807
 RJ08E-0004808
 RJ08E-0004810
 RJ08E-0004814
 RJ08E-0004820

2005 FJR1300TC

RP07Y-0000662~0000681

2005 YZF-R1T

RN13E-0012966~0013004
 RN13E-0013006
 RN13E-0013007
 RN13E-0013009
 RN13E-0013011~0013013
 RN13E-0013015~0013039
 RN13E-0013043
 RN13E-0013048
 RN13E-0013060
 RN13E-0013062
 RN13E-0013064
 RN13E-0013065
 RN13E-0013068
 RN13E-0013069
 RN13E-0013071
 RN13E-0013075
 RN13E-0013077
 RN13E-0013079
 RN13E-0013104
 RN13E-0013108
 RN13E-0013114
 RN13E-0013115
 RN13E-0013118
 RN13E-0013120
 RN13E-0013122~0013125
 RN13E-0013129
 RN13E-0013131
 RN13E-0013139
 RN13E-0013140
 RN13E-0013147
 RN13E-0013150
 RN13E-0013153
 RN13E-0013154

2005 YZF-R1TC

RN13Y-0003393~0003432



SERVICE PROCEDURES

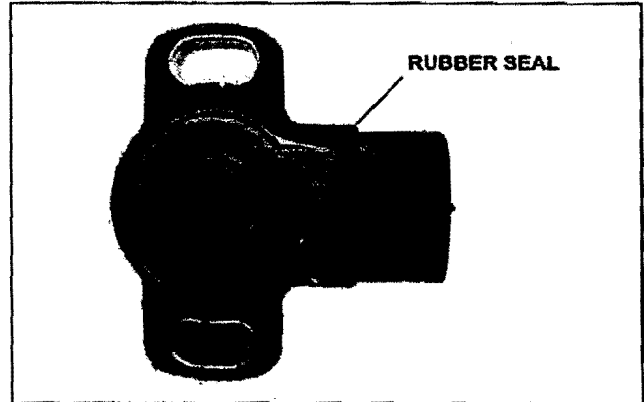
To replace the TPS, follow the applicable Service Manual:

- YZF-R1 LIT-11616-17-55
- FZ6 LIT-11616-FZ-61
- FJR1300 LIT-11616-FJ-02

Refer to "Checking and Adjusting the Throttle Position Sensor" in the Service Manual.

WARNING

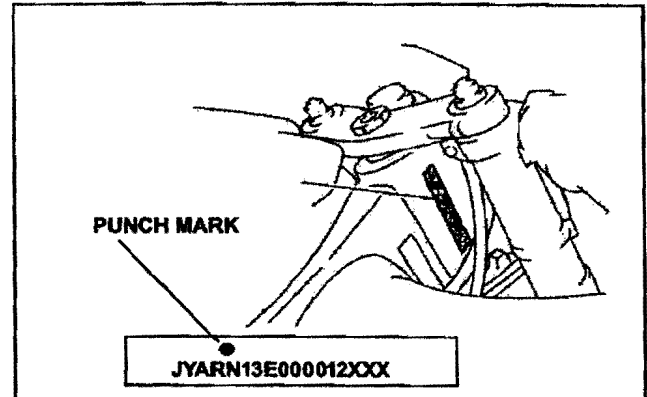
Be sure to remove the old TPS seal from the throttle body if it did not come off with the TPS. Otherwise, the leftover seal may cause the new TPS to exhibit an unstable idle.



IDENTIFICATION PROCEDURE

When the modification is complete, put a punch mark above the VIN (frame number) as shown.

Before modifying a unit, check for this punch mark.



PARTS INFORMATION

Part Number	Description	Application	Qty.	Dealer Cost
5FL-85885-02-00	TPS (includes new seal)	YZF-R1 FZS600	1	\$73.12
3P6-85885-00-00	TPS (includes new seal)	FJR1300	1	\$89.96



WARRANTY INFORMATION

The owner of each warranty-registered unit shown as not modified in our records will receive a letter announcing this campaign.

The modification is authorized for all unmodified affected vehicles, both sold and unsold, regardless of ownership or warranty status. You do not need the customer's letter to perform the modification or to file for reimbursement.

Submit a Recall Request for the TPS replacement as described below using Recall Number **990053**. Choose the status "M." You will be reimbursed for **1.2** hours of labor, plus the cost of the TPS kit and your handling fee.

YDS:

When signed on to YDS, click on the Service Tab, and then "Recall Request-Add." This function will allow you to enter multiple Primary IDs for the same recall. Remember that YDS now requires a 7-digit serial number, so use a "0" as the first digit. The system will check your submission instantly to make sure the Primary ID numbers you've entered are valid for the recall. You can check back the next day for your claim numbers to track your credit.

MAIL:

Complete a recall Reimbursement Request (LIT-11790-00-03) as shown below:

Dealer Number					Dealer Name																										
Recal Number							Primary I.D.							Date Completed							Status										
9	9	0	0	5	3		R	N	1	3	Y	-	0	0	0	3	X	X	X	1	0	-	1	0	-	2	0	0	9	M	I
																													M	I	

If you have any questions about proper procedures for Factory Modification Campaigns, see Chapter 7 in your **Warranty and Y.E.S. Handbook** (LIT-11760-00-08).