



VT SVC

A company of VT Systems

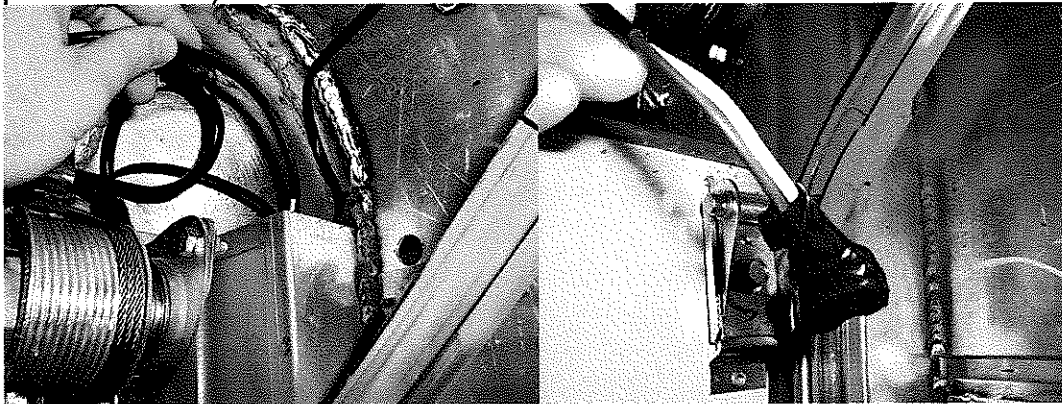
911 West 5th Street, PO Box 880
Washington NC 27889-0880
Phone 252.946.6521

Hackney Division

Recall 09V-340

SIDE MARKER LAMP INSTALLATION INSTRUCTIONS

1. Ensure that the circuit for the clearance lamps is not energized.
2. From inside the rear bay, look in the rear corners and locate the light connector that is connected to the outermost rear facing 2" light. A brown and white wire should be extending past this connector. If there is an additional connector for the light you are installing in place on these brown and white wires, it will be wrapped in electrical tape (ref photos below.).



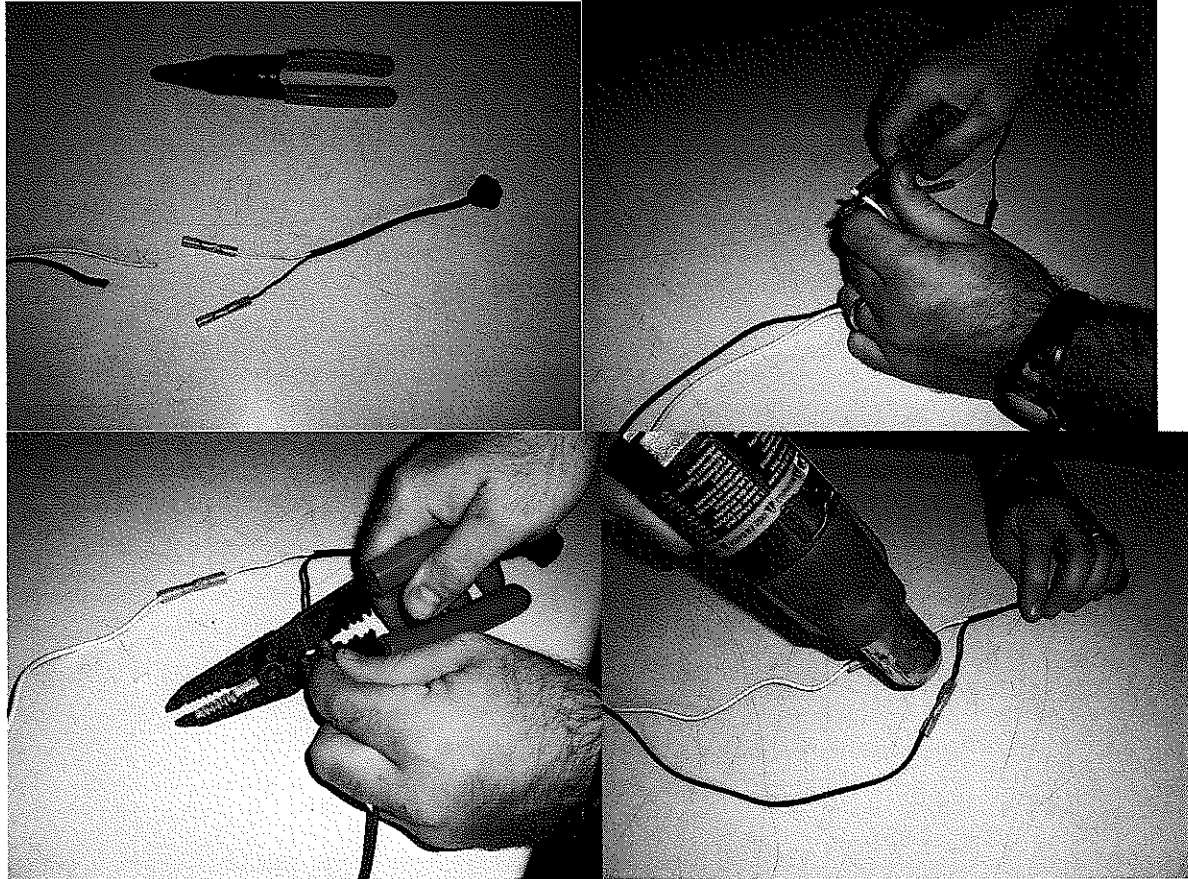
If this connector is encountered, proceed to step 3. If only wires and no connector is encountered, add the connector supplied with the kit to these wires, matching the white wire to the existing white wire (ref. photos below).



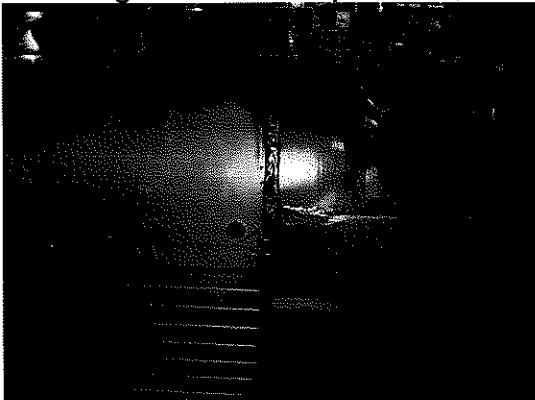
VT SVC

A company of VT Systems

911 West 5th Street, PO Box 880
Washington NC 27889-0880
Phone 252.946.6521



3. Ensure that the wire and connector is not in the area to be drilled for the side lamp. Remove the tape and clean any adhesive residue from the connector pins.
4. Either from inside the bay or outside, whichever is easier for you, mark the location for the holes in the top rail per the attached dimensioned drawing. Note that the drawing is showing the driver's side top rail.
5. Using the hole saw provided, drill the $\frac{3}{4}$ " diameter hole at the specified location.



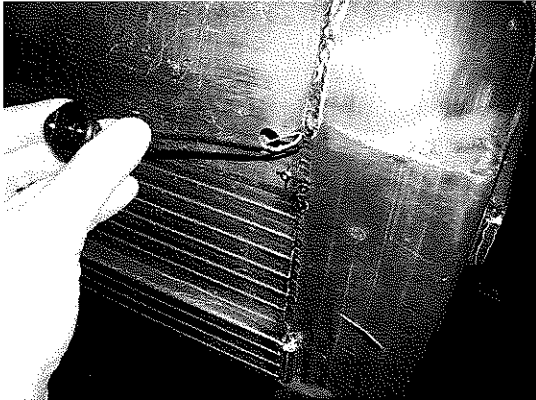
6. From the exterior of the top rail feed the light wires through the $\frac{3}{4}$ " hole, connectors first, making sure not to damage the wires.



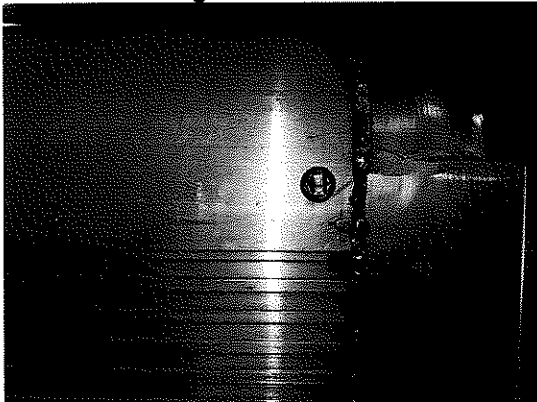
VT SVC

A company of VT Systems

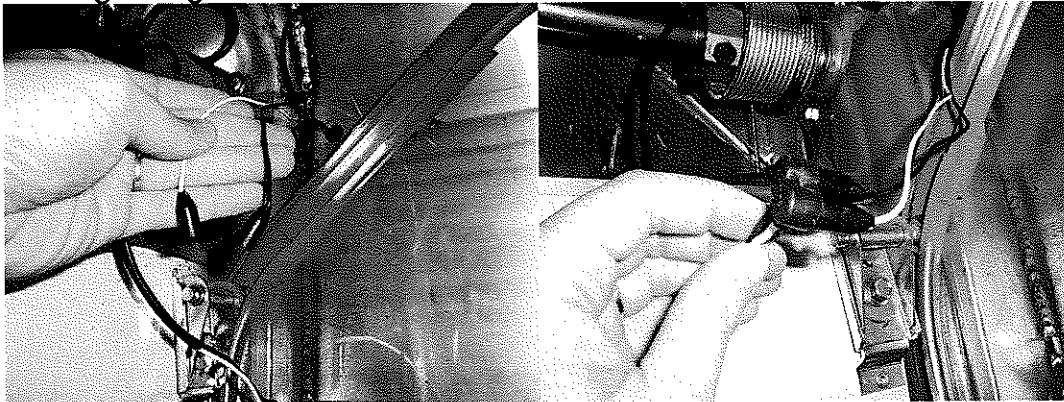
911 West 5th Street, PO Box 880
Washington NC 27889-0880
Phone 252.946.6521



7. Slide the light into the hole until the flange of the grommet seats flush against the top rail.



8. Connect the two individual female connectors on the light wires to the two male pins on the existing wiring harness located in #2 above.



9. Energize the circuit to ensure proper operation of the newly installed lamps.
10. Tie excess wire to existing harness to hold in place and ensure no damage to the wires during operation.