

Girardin Minibus

Recall Campaign

TITLE: 09-031-FSC/09-031-FSU

TO: Girardin Minibus Customers

PRODUCTS: G5 commercial buses model year 2006 through 2009

FROM: Girardin Minibus Service & Warranty Department

PLANNING INFORMATION

Description

This document contains procedure to reinforce the foldaway seating bolts located above the cross member intersection with the foldaway seat support. This reinforcement is necessary to meet the FMVSS 207 & 210 requirements.

Compliance

Claim under warranty must be sent to Girardin Minibus within 45 days of the repair date.

Manpower

We allow approximately **0.5 hour** per seat.

Material Availability

Part No	Description	Qty/seat
11D0194	Foldaway seat reinforcement	2*
81C07F308	BPHEX GR8 ZC 7/16-20 X 3 1/2	2*

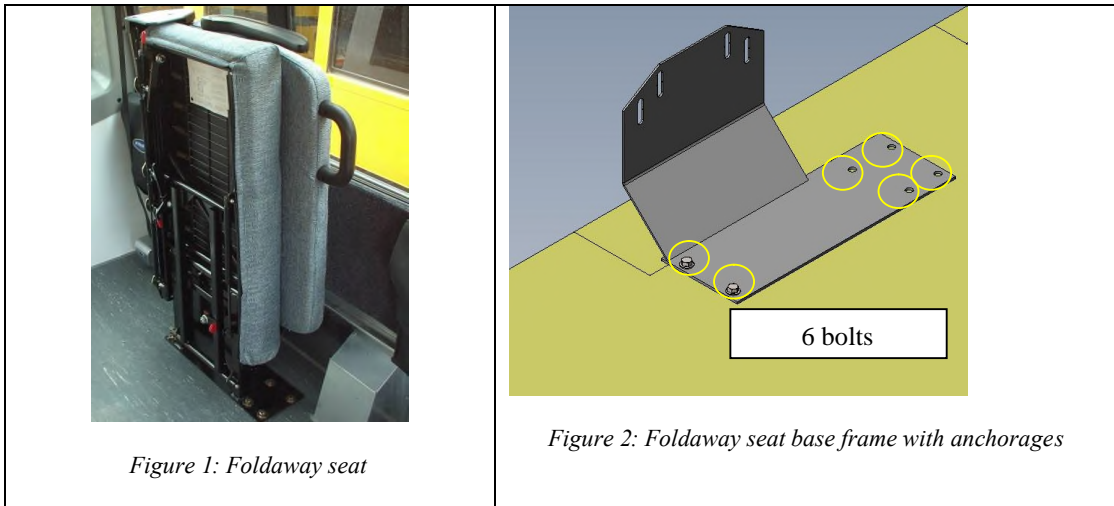
*this quantity must be multiplied by the problematic seat.

MODIFICATION INSTRUCTIONS

Note: It is assumed that all of the procedures required to embody this modification will be performed according to professionally accepted standards. It is recommended to read the entire procedure prior to beginning the work.

PROCEDURE

- 1- Localize the foldaway seat frame base and their anchorages.



- 2- Localize the foldaway seat support by the vehicle underneath. 1 or 2 seat bolt could be installed in a weaker floor section.

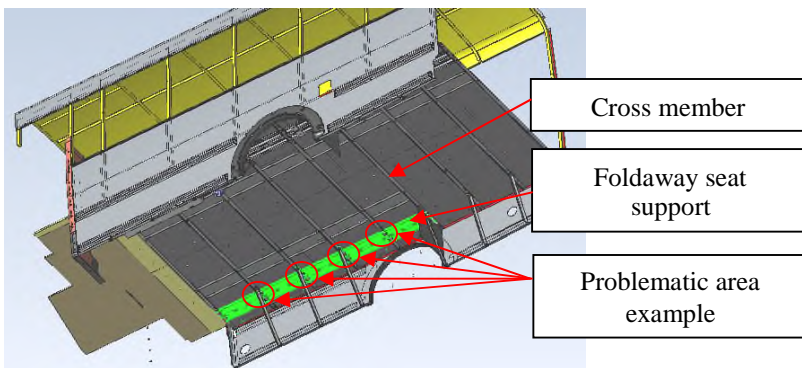


Figure 3: Underneath view with seat support (green)

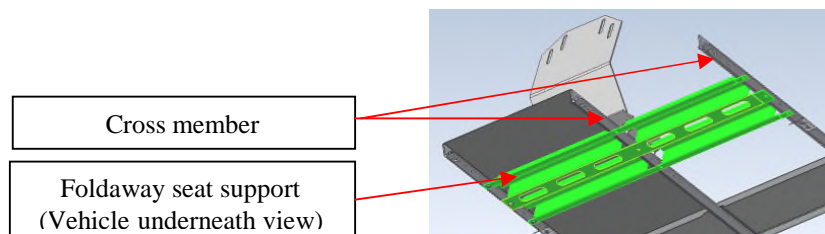


Figure 4: Seat support enlargement view (green)

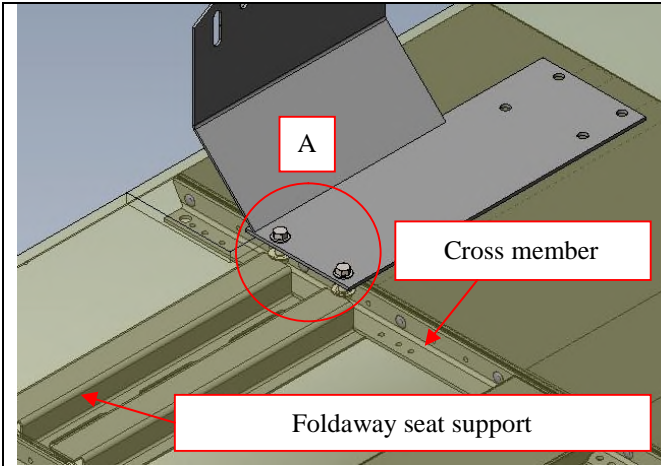


Figure 5: Floor structure view without the floor covering + bolts location.

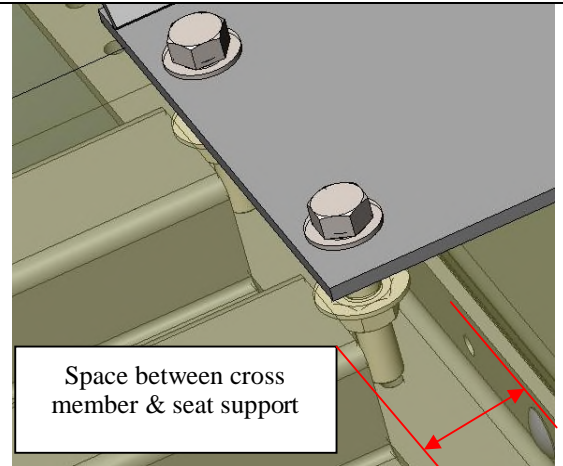


Figure 6: Detail A enlargement view

- 3- All the seat installation bolts shall be located in the seat support (green part in figure 8). No bolt shall be installed as shown on figure 9.

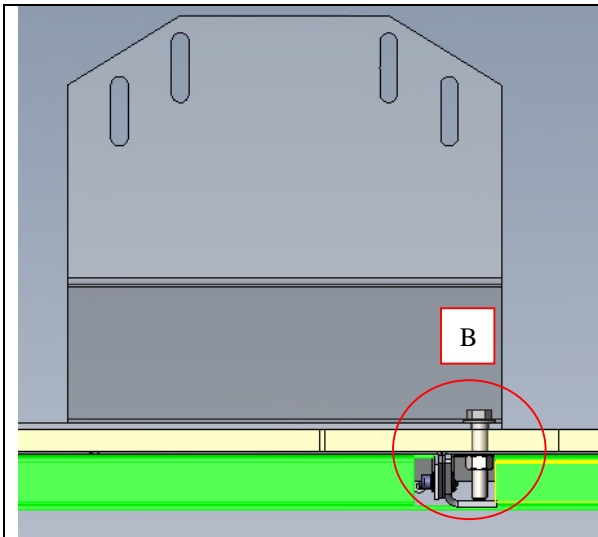


Figure 7: Bolt location vs cross member & seat support

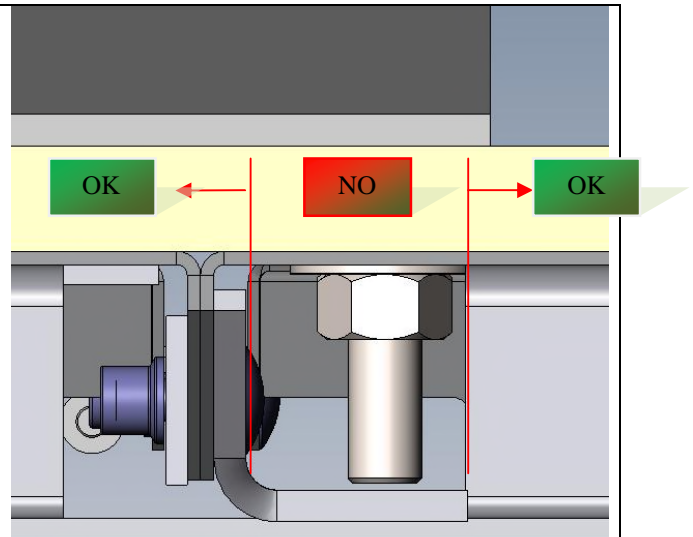


Figure 8: Detail B enlargement view

- 4- In a non compliance installation situation, drill a 7/16" holes in the cross member and install the reinforcement plate supplied.

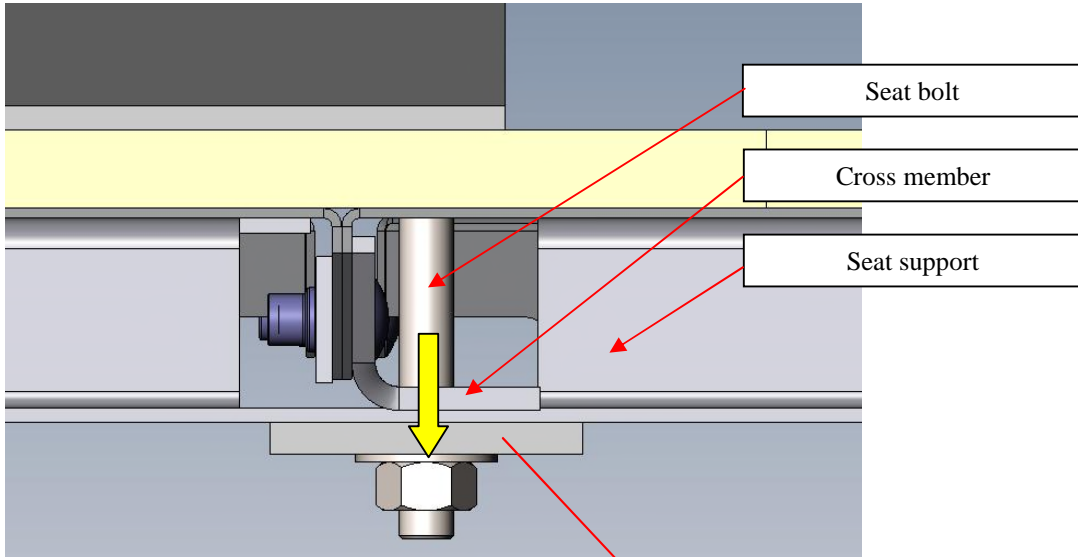


Figure 9: Drill location in the cross member

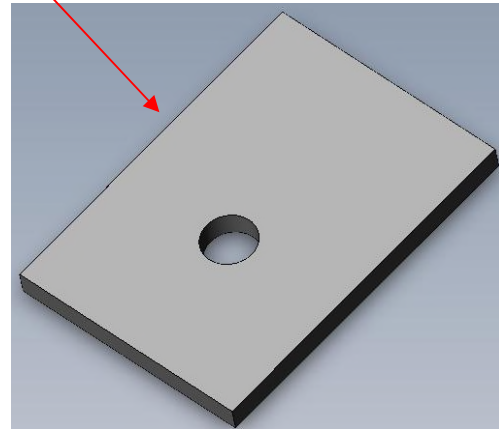


Figure 10: Reinforcement plate

4- Reparation validation

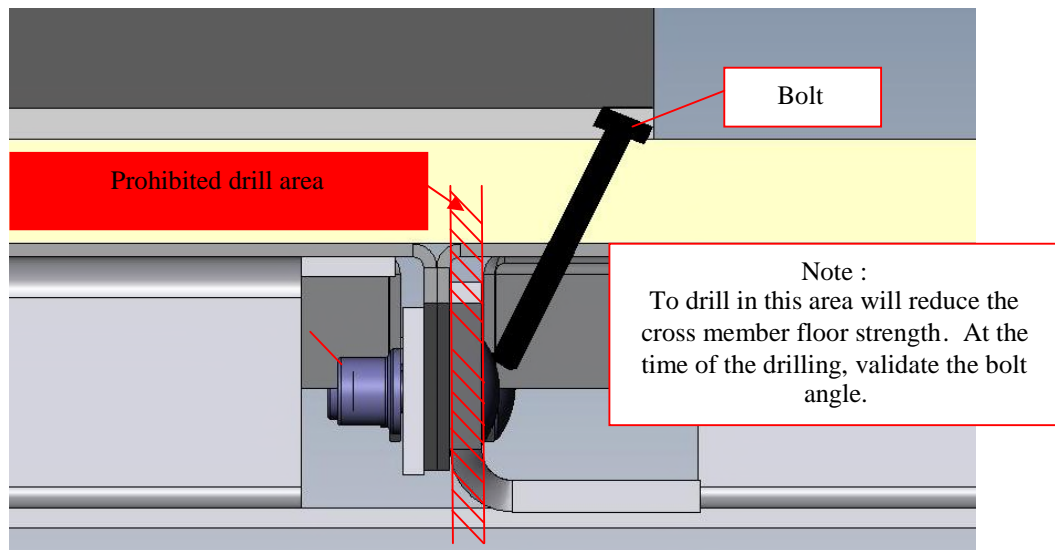


Figure 11: Prohibited drill area

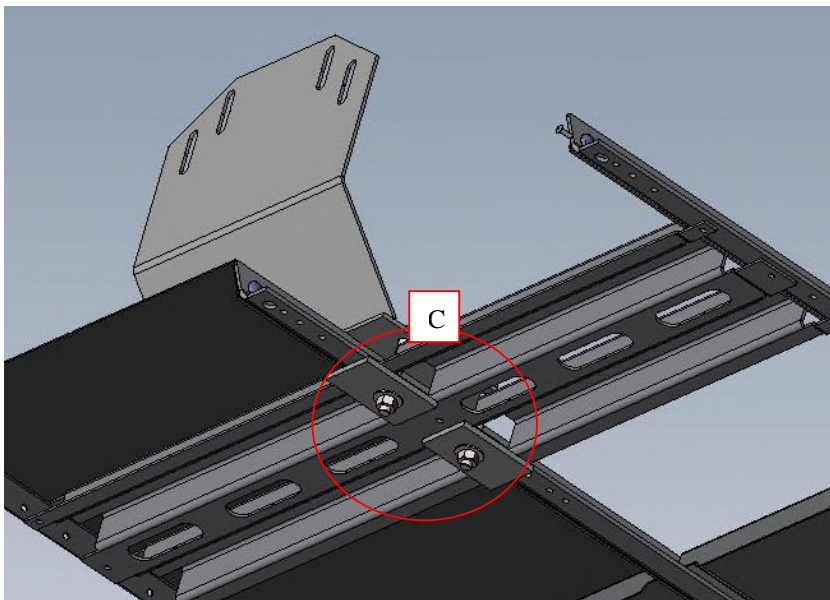


Figure 12: Underneath view - final installation & reinforcement plate orientation.

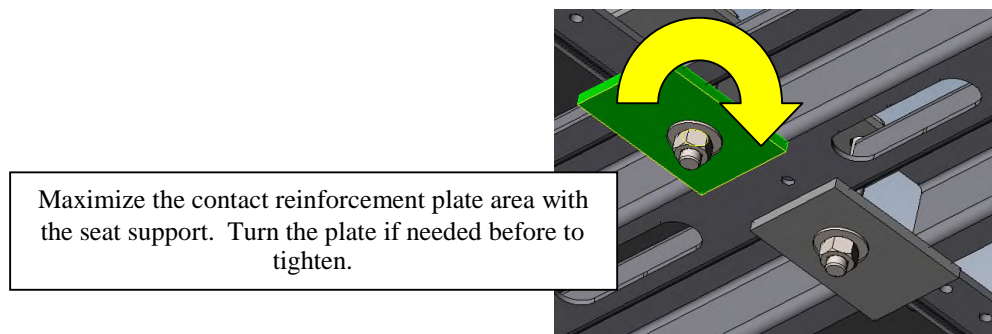


Figure 13: Detail C enlargement view