

Girardin Minibus

Recall Campaign

TITLE: 09-032-MPC

TO: Girardin Minibus Customers

PRODUCTS: G5 minibus - year 2006 through 2009
MPV model (less than 11 passengers)

FROM: Girardin Minibus Service & Warranty
Department

PLANNING INFORMATION

Description

This document contains procedures to reinforce the seat anchorage on the floor of G5 buses equipped with Freedman "Feather Weight" rigid seats. This reinforcement is necessary to meet the FMVSS / CMVSS 207 & 210 requirements.

Compliance

Claim under warranty must be sent to Girardin Minibus within 45 days of the repair date.

Manpower

We allow approximately **0.3 hour** per seat.

Material Availability

Part number	Description	Qty/seat
31D0008	Bolting plate	1
82E07F	7/16 in. Nylon lock nut	2

MODIFICATION INSTRUCTIONS

Note: It is assumed that all of the procedures required to perform this modification will be done according to professionally accepted standards. It is recommended to read the entire procedure prior to beginning the work.

PROCEDURE

1. Find the two (2) rear mounting bolts of each rigid seat (figure 1) and remove the two nuts, flat washers and OEM bolting plate.
****Note :** The bolts to look for are fixed on the rear seat leg and located near the minibus center alley.
****Note:** Do not touch the front seat leg bolt.
2. Replace the OEM bolting plate with a wider piece (# 31D0008), reinstall the two previously removed washers and use two NEW nylon lock nuts (# 82E07F).
****Note:** During the installation of the bolting plate, it is important for the rubberized coated side to be placed towards the floor (figure 2).
3. Torque the nuts at 20~25 lbs-ft.
4. Spread or spray a corrosion protector on plate, bolts, nuts and washers.

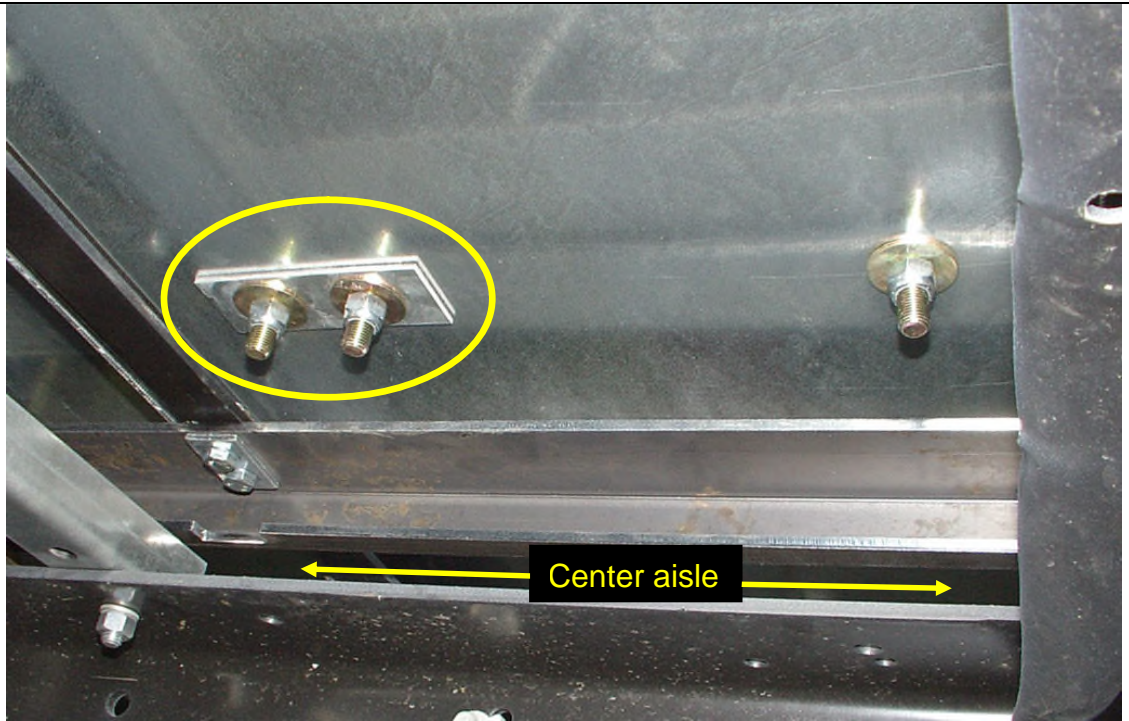


Figure 1: View from underside the floor – Rear bolts of a rigid seat

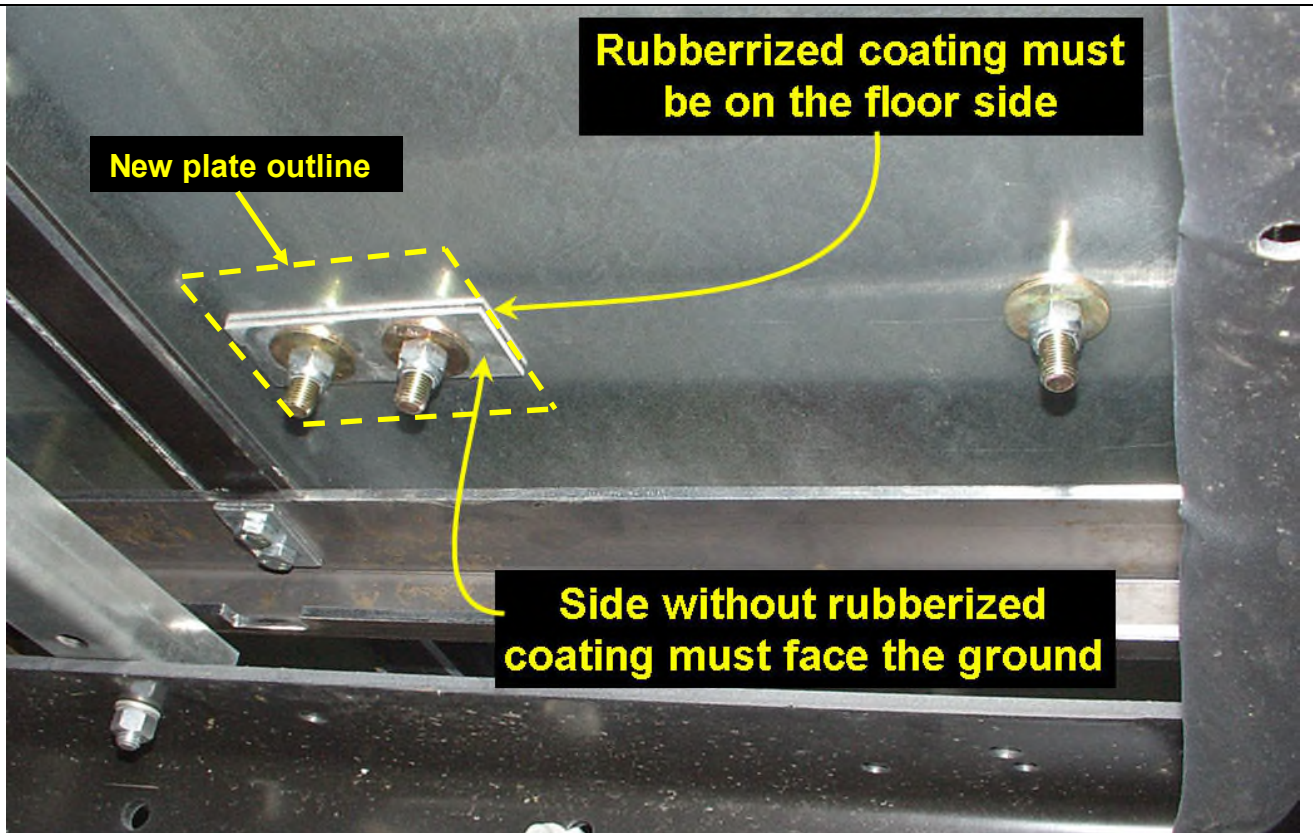


Figure 2: View from underside the floor – Correct way to install the bolting plate