



# HYUNDAI Technical Service Bulletin

		Group	CAMPAIGN	
		Number	09-01-019	
Subject	<b>CHROME-PLATED INSIDE DOOR HANDLE REPAIR (CAMPAIGN 093)</b>		Date	JULY, 2009
			Model	SONATA (EF)
<b>CIRCULATE TO:</b>	<input type="checkbox"/> GENERAL MANAGER	<input checked="" type="checkbox"/> PARTS MANAGER	<input checked="" type="checkbox"/> TECHNICIAN	
<input checked="" type="checkbox"/> SERVICE ADVISOR	<input checked="" type="checkbox"/> SERVICE MANAGER	<input checked="" type="checkbox"/> WARRANTY MGR	<input type="checkbox"/> SALES MANAGER	

**IMPORTANT: DEALERS MUST PERFORM THIS CAMPAIGN ON ALL AFFECTED VEHICLES WHENEVER AN AFFECTED VEHICLE IS IN THE SHOP FOR ANY MAINTENANCE OR REPAIR.**

**IMPORTANT: WHEN A VEHICLE ARRIVES AT THE SERVICE DEPARTMENT, ACCESS HYUNDAI MOTOR AMERICA'S "WARRANTY VEHICLE INFORMATION" SCREEN VIA WEBDCS TO IDENTIFY OPEN CAMPAIGNS.**

**DESCRIPTION:**


This bulletin provides instructions for repairing SONATA (EF) chrome plated inside door handles.

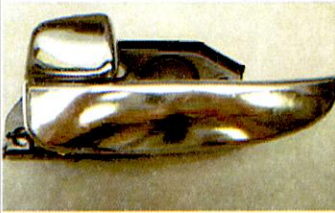
**APPLICABLE VEHICLES:**

- Model: 2002/2003 SONATA (EF)
- Applicable vehicle production date range: From January 28, 2002 through March 22, 2003.

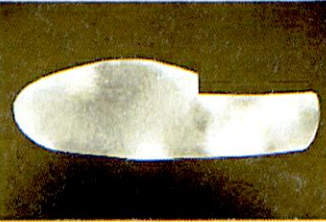
**PARTS INFORMATION:**

1. Inside Door Handle

PART NAME	PART NUMBER	PHOTOGRAPH
Handle Assembly - Door Inside, LH	82610-3D010QQH	

PART NAME	PART NUMBER	PHOTOGRAPH
Handle Assembly - Door Inside, RH	82620-3D010QQH	

2. Protective Film

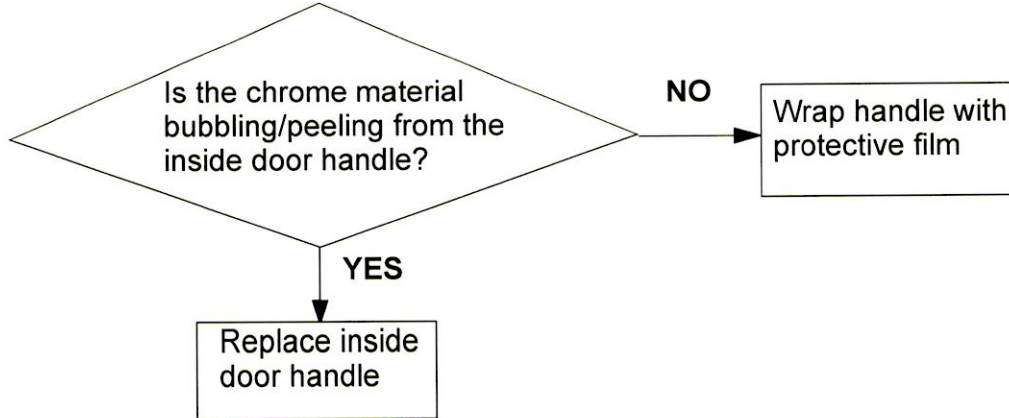
PART NAME	PART NUMBER	PHOTOGRAPH
Protection Wrap - Door Inside Handle (Quantity 4 per package - 2-left and 2-right).	82610-3D030QQH	



# HYUNDAI Technical Service Bulletin

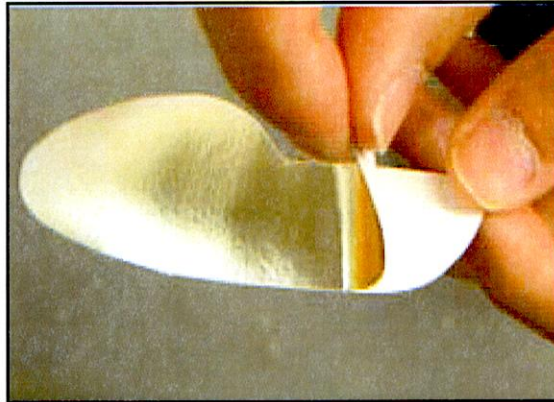
Group	CAMPAIGN
Number	09-01-019

## SERVICE PROCEDURE:



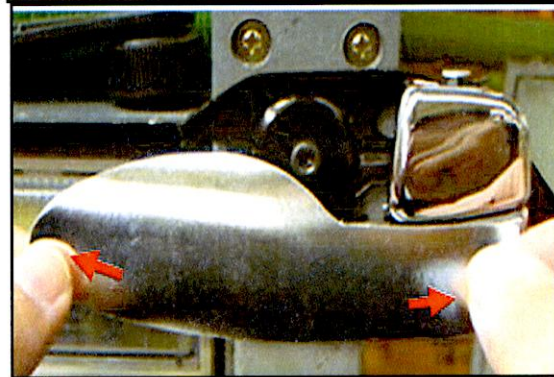
1. Inspect all four (4) inside door handles for any indication of bubbling/peeling of the chrome plating material.
  - If the chrome plating on the inside door handle is bubbling/peeling, replace the door handle according to the applicable SONATA (EF) shop manual.
  - If the chrome plating on the inside door handle is NOT bubbling/peeling, install the protective film onto the handle using the procedures provided below.
2. Use a cleaning agent (rubbing alcohol) to clean the inside door handle prior to applying the protective film.

3. Peel the backing off the protective film.



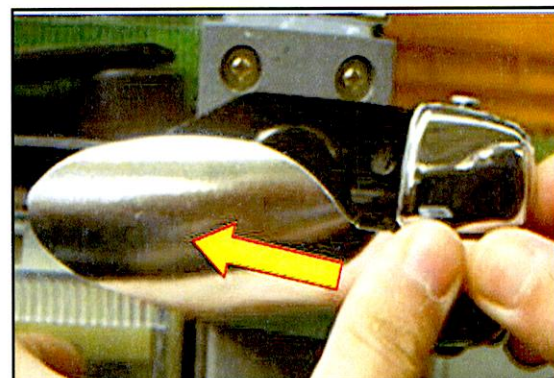
4. Apply the protective film onto the door handle.

**NOTE: Ensure that there are no bubbles/wrinkles in the protective film after the application is completed.**

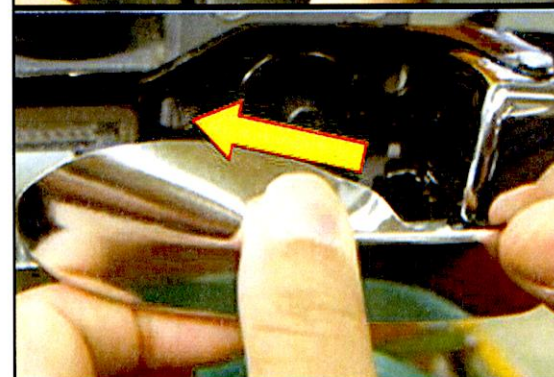


- Apply and press the protective film across the inside handle in the direction of the arrow shown.

**NOTE: Ensure that the protective film is properly aligned with the inside handle before proceeding.**



- Apply and press the protective film across the top edge of the inside handle in the direction of the arrow as shown.

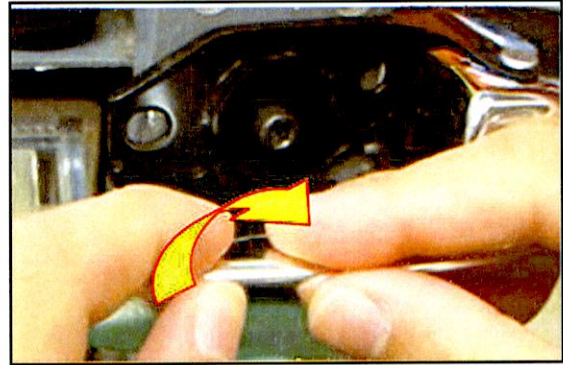




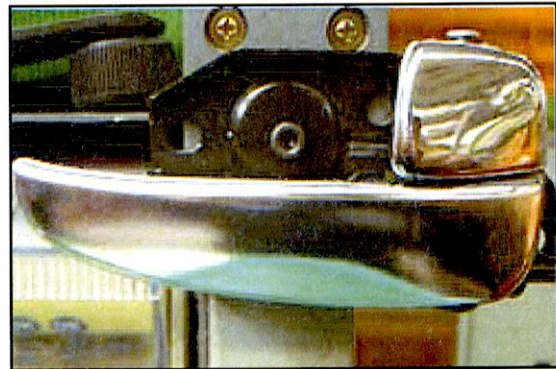
# HYUNDAI Technical Service Bulletin

Group	CAMPAIGN
Number	09-01-019

- Fold the top edge of the protective film over the top edge of the handle and against the back of the inside handle. Then apply and press the film to the handle.



5. Visually inspect the handle to ensure proper film application and that there are no bubbles/wrinkles in the film. Then gently press the film to the handle again to make sure it is secured.



### WARRANTY INFORMATION:

PART NAME	OP NAME (INSIDE DOOR HANDLE REPAIR)	OP TIME
91B032R0	4 WRAP	0.3 M/H
91B032R1	1 REPLACEMENT & 3 WRAP	0.4 M/H
91B032R2	2 REPLACEMENT & 2 WRAP	0.6 M/H
91B032R3	3 REPLACEMENT & 1 WRAP	0.8 M/H
91B032R4	4 REPLACEMENT	0.9 M/H

**NOTE:** Submit claim on Campaign Entry Screen.