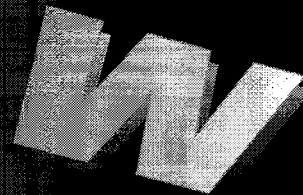


**SAFETY**  
CAMPAIGN**ROADSTER**  
**WARRANTY**  
Bulletin**WARNING:** All involved customers must be notified, all involved units must be corrected as per instructions herein.Campaign no.: 2008-0006  
2009-0002July 17<sup>th</sup>, 2009Subject: **Dynamic Power Steering (DPS) software update**No. **2009-2**

YEAR/OD	MODEL NUMBER	SERIAL NUMBER	
2008	Spyder GS SM5/SE5	All	See attached list
2009	Spyder GS SM5/SE5	All	See attached list

## PROBLEM

A situation may occur where you may need to exert a force greater than expected to initiate the turning of the steering handlebar of your vehicle in order to correct its trajectory. At this increased level of force the handlebar may be turned more than you had intended. If this occurs you may steer your vehicle out of lane which increases the possibility of a crash with other traffic or of a drive off the road.

## SOLUTION

Update DPS software.

### Software Update

Refer to *CAN-AM 2008-2009 ROADSTER SHOP MANUAL* - Section 03 ELECTRONIC MANAGEMENT SYSTEMS (Subsection 2) under *MULTI-PURPOSE INTERFACE-2* and *B.U.D.S. SOFTWARE* for details about communication tools.

### Calibration File Download

Prior to working on vehicle, the calibration file has to be downloaded from the BRP Web site to your shop computer. This file will update the current vehicle file which controls the DPS.

NOTE: Use version 2.3.21 until a new version is available for Can-Am™ Roadster. DO NOT use versions 2.3.22 nor 2.3.23 as they are specific to other BRP products.

To download the appropriate file proceed as follows:

1. On the internet, go to the BRP web site:

[WWW.BOSSWEB.BRP.COM](http://WWW.BOSSWEB.BRP.COM)

2. Under ComCenter drop down list, select:

– *DOCUMENT*

3. On the menu, select:

– Document Type: *DIAGNOSTIC SOFTWARE*

– Category: *B.U.D.S.*

4. Click on arrow and wait for results.

5. Select and download the calibration update file:

**219 800 129.FC**

NOTE: Remember where you save the file, because you will browse for it. If your internet connection is on another PC, you will want to download the file to CD ROM or other method of transfer, to update your shop computer.

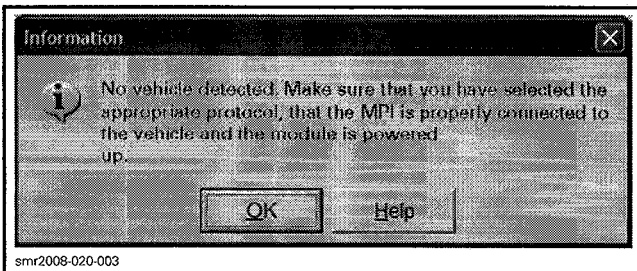
# Modules Update

**NOTICE** Make sure to disable computer screen saver. Provide enough electrical supply to the computer to avoid interruptions. This operation can take up to 10 minutes and requires continuous supply.

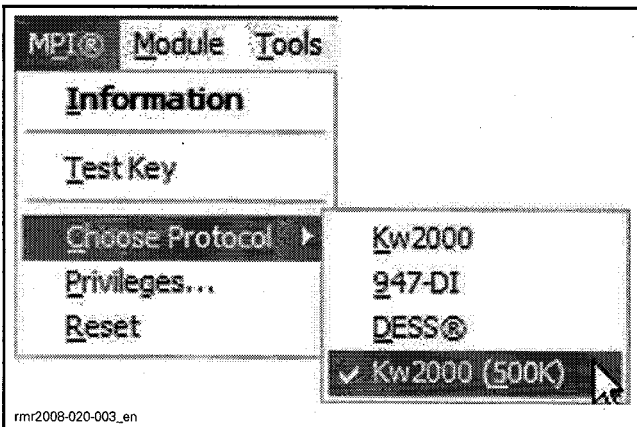
NOTE: Ensure all connections have been made before starting B.U.D.S. to allow proper operation.

1. Before performing this bulletin, check battery voltage. The battery must be fully charged or use a power pack to have enough power.
2. Turn ignition key to ON.
3. Start B.U.D.S. and logon.

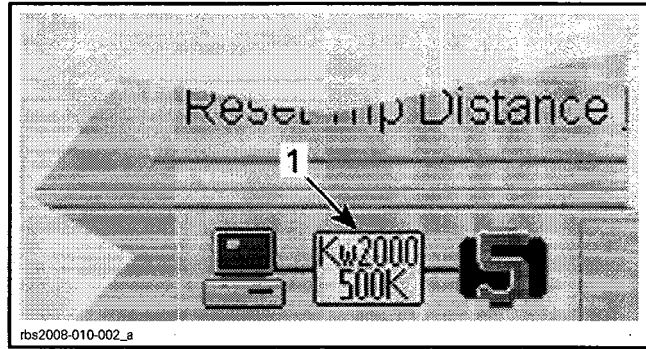
NOTE: If **No vehicle detected...** message is displayed in B.U.D.S.:



4. Ensure both USB and CAN lights of MPI-2 are GREEN.
5. Click on **MPI®** drop down list and select :
  - CHOOSE PROTOCOL
  - KW2000 (500K)



NOTE: Next to this selection, Kw2000 (500K) icon will appear at the bottom of the screen indicating a successful connection.



1. Icon indicating a successful connection
2. Qty of module connected

6. Make sure all modules are connected.

MOD	MODULE NUMBER
SM5	4
SE5	5

7. Click on **TOOLS** drop down list and select:  
- UPDATE DATABASE...

8. Click on **ADD UPDATE**.

9. Locate the previously downloaded calibration update file and click **OPEN**.

10. Click **O.K.** when the confirmation message appears.

11. Click **CLOSE** in the "Update Database".

12. In B.U.D.S. window, click on **READ DATA** icon.

13. While reading BUDS, a window will appear indicating that there is an update needed, choose "Yes".

14. The first update is for the ECM. Click "Yes" when the message **B.U.D.S. DETECTED THAT THE INTERNAL ECM SOFTWARE MUST BE UPDATE. MAKE SURE...** appears to start the update.

15. Click "OK" after the message: **UPDATE HAS BEEN SUCCESSFULLY TRANSFERRED INTO ECM.** This also initiates another update.

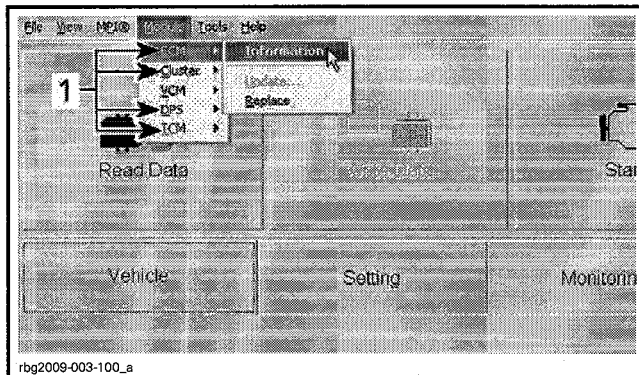
16. Repeat steps 14 and 15 to update CLUSTER, TCM (if applicable) and DPS modules.

NOTE: Depending of the production date of the vehicle, the TCM may or may not need to be updated.

**IMPORTANT:** In case of problem updating a module, please contact your dealer technical support before replacing any component.

17. When all updates are completed the following message will appear **CLUSTER CODING DOES NOT MATCH ECM.** Click "Yes" to close the message.

18. Remove the ignition key when the message *REMOVE KEY FROM THE VEHICLE POST AND WAIT UNTIL THIS MESSAGE DISAPPEARS BEFORE INSERTING THE KEY AGAIN* appears. Do **NOTHING** during this moment, the message will disappear automatically.
19. Reinstall the key and turn it in ON position.
20. Check if all updates are successfully done by selecting module and viewing "information" in ECM, Cluster, DPS and TCM (SE-5 only) as listed below. If the proper codes are not in place, go back to the "module" menu and check for available updates.



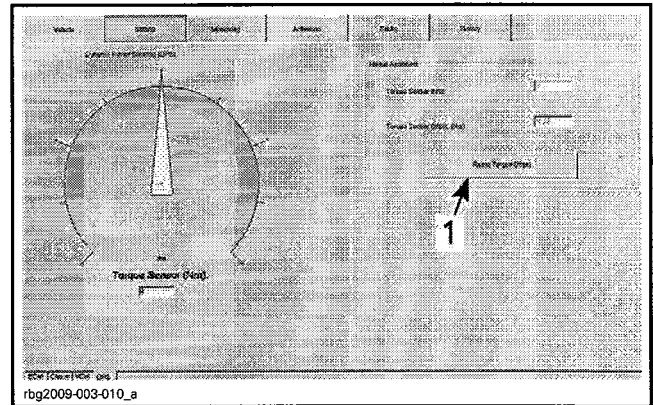
1. Modules menu information

ECM MODULE	
BRP assembly number	SE5 models: 420266763 SM5 models: 420266761
CLUSTER	
BRP software number	710002110
DPS MODULE	
Supplier software number	S01030E17
TCM MODULE	
Supplier software number	S00863E04

## DPS Torque Offset Reset

**NOTICE** Ensure handlebar is straight and free.

1. In B.U.D.S., go to **Setting** tab then choose **DPS** tab.
2. Press **Reset Torque Offset** button.



SETTING, DPS

1. Reset Torque Offset button

3. Go to **Faults** tab and erase all faults.

**NOTE:** An "ACTIVE" fault may remain present. This is not an issue at this point. Any remaining faults will be erased later.

4. Remove the ignition key when the message *REMOVE KEY FROM THE VEHICLE POST AND WAIT UNTIL THIS MESSAGE DISAPPEARS BEFORE INSERTING THE KEY AGAIN* appears. Do **NOTHING** during this moment, the message will disappear automatically.
5. Click on **READ DATA** icon then check faults. Erase any remaining faults.
6. Return in **Faults** tab and ensure all faults were erased. Fix any remaining faults.

## Vehicle Test Run

1. Start engine and ensure that the DPS is operating properly.

## WARRANTY

### 2008-0006

Submit a warranty claim using the following information:

CAMPAIGN NUMBER	2008-0006
Claim type	Campaign claim
Action	Repair
Flat Rate Time	0.5 hour

### 2009-0002

Submit a warranty claim using the following information:

---

CAMPAIGN NUMBER	2009-0002
Claim type	Campaign claim
Action	Repair
Flat Rate Time	0.5 hour

For claiming procedure, refer to *DEALER/DISTRIBUTOR WARRANTY GUIDE*.

# SERIAL NUMBERS LISTING OF INVOLVED VEHICLES (2008-0006)

**Model: A18B**

From 000054 to 000086

**Model: A18C**

From 000035 to 000041  
From 000044 to 000048  
From 000050 to 000053

**Model: A18E**

From 000087 to 000131

**Model: A18F**

From 000012 to 000026  
From 000028 to 000029  
From 000031 to 000034

**Model: A18G**

From 000001 to 000048  
From 000132 to 000170  
From 000239 to 000277  
From 000352 to 000553  
From 000837 to 000859  
From 000999 to 001066  
From 001375 to 001443  
From 002009 to 002113  
From 002422 to 002491  
From 002624 to 002784  
From 002961 to 003038  
From 003213 to 003286  
From 003441 to 003510  
From 003663 to 003789

**Model: A18H**

From 000049 to 000110  
From 000112 to 000131  
From 000171 to 000175  
From 000177 to 000238  
From 000278 to 000340  
From 000342 to 000351  
From 000554 to 000836  
From 001067 to 001374  
From 001855 to 002008  
From 002114 to 002421  
From 002492 to 002623  
From 002785 to 002960  
From 003039 to 003212  
From 003287 to 003440  
From 003511 to 003662  
From 003790 to 003853

**Model: A18J**

From 000001 to 000002  
From 000433 to 000510  
From 000765 to 001335  
From 001337 to 001343

**Model: A18J (cont'd)**

From 001392 to 001626  
From 001655 to 001709  
From 002318 to 002382  
From 002384 to 002513

**Model: A18K**

From 000004 to 000123  
From 000125 to 000165  
From 000167 to 000432  
From 000511 to 000764  
From 001627 to 001654  
From 002246 to 002317

**Model: A18L**

000002  
From 000720 to 000848  
From 001220 to 001965  
From 001967 to 002316  
From 002318 to 002595  
002600  
From 002692 to 002778  
From 003682 to 003895  
From 004057 to 004167

**Model: A18M**

From 000003 to 000357  
From 000359 to 000372  
From 000374 to 000386  
From 000388 to 000389  
From 000391 to 000717  
From 000849 to 001219  
From 002655 to 002691  
From 003610 to 003681

**Model: A18N**

From 000860 to 000909  
From 001588 to 001693  
From 001775 to 001854

**Model: A18P**

From 000910 to 000998  
From 001444 to 001587  
From 001694 to 001774

**Model: A18R**

000001

**Model: A18S**

000001

**Model: A18U**

From 000331 to 000572  
From 000662 to 000836

**Model: A28B**

From 001762 to 001877  
From 001888 to 001892  
From 001894 to 001961  
From 002022 to 002195  
From 002514 to 002673

**Model: A28C**

From 001714 to 001761  
From 001878 to 001887  
From 001962 to 001978  
From 001980 to 002021  
From 002196 to 002217  
From 002219 to 002234  
From 002236 to 002245

**Model: A28E**

000718  
From 002779 to 002853  
From 002950 to 003097  
From 003111 to 003243  
From 003302 to 003443  
From 003445 to 003535  
From 003896 to 004056

**Model: A28F**

From 002854 to 002949  
From 003098 to 003110  
From 003244 to 003301  
From 003536 to 003609

**Model: A28G**

From 000001 to 000004  
From 000045 to 000141  
From 000232 to 000330  
From 000573 to 000612  
From 000837 to 000946

**Model: A28H**

From 000005 to 000044  
From 000142 to 000231  
From 000613 to 000661

# SERIAL NUMBERS LISTING OF INVOLVED VEHICLES (2009-0002)

## **Model: A19B**

From 000041 to 000217  
From 000549 to 000675  
From 000866 to 000872  
From 000874 to 000891  
000925  
From 000927 to 000929  
From 000933 to 000934  
From 000939 to 000940  
From 000942 to 000948  
From 000950 to 000958  
From 001082 to 001089  
From 001092 to 001093  
From 001095 to 001096  
From 001157 to 001180  
From 001374 to 001375  
From 001377 to 001378  
From 001380 to 001381  
001383  
From 001385 to 001392  
From 001394 to 001395  
From 001397 to 001399  
From 001401 to 001416  
001592  
From 001595 to 001597  
001602  
From 001606 to 001607  
001609  
From 001611 to 001616  
001620  
From 001623 to 001624  
From 001627 to 001628  
From 001630 to 001632  
From 001637 to 001644  
From 001646 to 001647  
001650  
From 001654 to 001655  
001662  
001822

## **Model: A19C**

From 000002 to 000004  
From 000006 to 000009  
From 000012 to 000019  
From 000021 to 000028  
From 000030 to 000031  
From 000033 to 000035  
From 000037 to 000040  
000893  
000895  
From 000897 to 000898  
From 000900 to 000901  
From 000903 to 000904  
From 000906 to 000911

## **Model: A19C (cont'd)**

From 000913 to 000915  
000917  
000920  
From 000922 to 000923  
From 001100 to 001102  
From 001105 to 001106  
From 001109 to 001112  
001114  
From 001116 to 001117  
From 001181 to 001182  
001186  
001196  
001203  
From 001214 to 001215  
From 001218 to 001219

## **Model: A19D**

From 000001 to 000077  
From 000105 to 000294  
From 000573 to 000612  
From 001172 to 001194  
From 001474 to 001493  
From 001599 to 001616  
From 001618 to 001619  
From 001621 to 001642  
From 001875 to 001882  
From 001884 to 001888  
001890  
From 001893 to 001897  
001900  
001904  
From 001906 to 001907  
From 001912 to 001914  
From 001916 to 001919  
From 001921 to 001923  
From 001926 to 001927  
From 001929 to 001930  
001934  
001936  
001939  
From 001941 to 001944  
From 002205 to 002207  
002211  
002216  
002218  
From 002221 to 002222  
002224  
002233  
002236  
From 002244 to 002245  
002247  
002249  
From 002252 to 002253

## **Model: A19D (cont'd)**

002403  
002411  
002419  
002427  
002433  
002437  
002545  
002559  
002574

## **Model: A19E**

From 000078 to 000104  
From 001120 to 001171  
From 001301 to 001346  
From 001348 to 001354  
From 001495 to 001498  
001504  
001516  
001518  
001523  
001539  
001541  
001554  
001559  
001561  
001565  
001568  
001573  
001647  
001680  
From 002582 to 002587

## **Model: A19F**

From 000002 to 000054  
From 000056 to 000210  
From 000908 to 000945  
From 000947 to 001154  
From 001156 to 001177  
From 001179 to 001208  
From 001210 to 001213  
From 001215 to 001216  
From 001218 to 001233  
From 001235 to 001245  
001248  
From 001251 to 001267  
From 001269 to 001270  
From 001272 to 001276  
From 001711 to 001743  
From 001745 to 001746  
From 001923 to 001975  
From 002344 to 002348  
From 002350 to 002351  
From 002353 to 002355

**Model: A19F (cont'd)**

From 002357 to 002359  
 002361  
 002363  
 002453  
 002456  
 002631  
 002637  
 002639  
 From 002647 to 002648  
 002650  
 002654  
 002860  
 002863  
 002868  
 From 002874 to 002875  
 002879  
 From 002883 to 002884  
 From 002887 to 002892  
 From 002894 to 002898  
 From 002900 to 002903  
 From 002906 to 002912  
 From 002914 to 002918  
 From 002920 to 002924  
 002927  
 From 002929 to 002931  
 002934  
 002936  
 002938  
 002941  
 002943  
 002949  
 003076  
 003098  
 003161  
 From 003163 to 003169  
 From 003234 to 003236  
 From 003238 to 003239  
 003242  
 003244  
 From 003249 to 003257

**Model: A19G**

From 000358 to 000409  
 From 000777 to 000778  
 From 000780 to 000782  
 From 000785 to 000786  
 000788  
 000790  
 From 000795 to 000798  
 From 000800 to 000803  
 From 000805 to 000807  
 From 000809 to 000832  
 From 000834 to 000843  
 From 000845 to 000849  
 From 000851 to 000853  
 From 000855 to 000859

**Model: A19G (cont'd)**

000861  
 000863  
 000865  
 000867  
 000874  
 From 000876 to 000877  
 000880  
 From 000882 to 000883  
 From 000887 to 000889  
 000891  
 From 000893 to 000907  
 From 001873 to 001876  
 001879  
 001884  
 001888  
 From 001891 to 001892  
 From 001894 to 001896  
 From 001898 to 001905  
 From 001909 to 001912  
 From 001914 to 001917  
 From 001919 to 001922  
 002104  
 002118  
 002124  
 002141  
 002148  
 002459

**Model: A19H**

From 000044 to 000162  
 From 000164 to 000172

**Model: A19J**

From 000001 to 000043  
 From 000173 to 000177  
 From 000179 to 000184  
 000186  
 From 000191 to 000196  
 000198  
 From 000200 to 000201  
 From 000203 to 000221  
 From 000224 to 000226  
 000228  
 From 000230 to 000233  
 000237  
 000245

**Model: A19K**

From 000178 to 000268  
 From 000516 to 000674  
 From 000676 to 000702  
 From 000705 to 000713  
 From 000715 to 000721  
 From 000723 to 000792

**Model: A19L**

From 000001 to 000104

**Model: A19L (cont'd)**

From 000269 to 000285  
 From 000287 to 000334  
 From 000336 to 000338  
 From 000340 to 000343

**Model: A19M**

From 000125 to 000237  
 From 000239 to 000389

**Model: A19N**

From 000001 to 000006  
 From 000008 to 000023  
 From 000025 to 000294  
 From 000297 to 000316  
 From 000318 to 000322  
 From 000324 to 000327  
 From 000330 to 000348  
 From 000350 to 000358  
 From 000360 to 000425  
 From 000427 to 000475  
 From 000477 to 000498  
 From 000500 to 000534  
 From 000536 to 000546  
 From 000548 to 000549  
 000551  
 000553  
 From 000555 to 000563  
 From 000566 to 000571  
 From 000575 to 000578  
 000593  
 From 000603 to 000604  
 000608  
 000615  
 From 000619 to 000620  
 000622  
 000628  
 000632  
 000636  
 From 000645 to 000646  
 From 000648 to 000650

**Model: A29B**

From 000228 to 000258  
 From 000301 to 000469  
 From 000676 to 000772  
 From 000774 to 000865  
 From 000959 to 000977  
 000980  
 000982  
 000985  
 From 000987 to 000990  
 From 000993 to 001024  
 From 001055 to 001081  
 From 001118 to 001156  
 001282  
 001284  
 001288

**Model: A29B (cont'd)**

001291  
 001306  
 001311  
 From 001316 to 001317  
 From 001319 to 001322  
 From 001324 to 001330  
 From 001337 to 001338  
 001361  
 001565  
 001573  
 001669  
 001675  
 001677  
 001679  
 001687  
 001690  
 001714  
 001717  
 From 001795 to 001809

**Model: A29C**

From 000259 to 000282  
 From 000284 to 000297  
 From 000299 to 000300  
 From 000470 to 000471  
 From 000473 to 000489  
 From 000491 to 000497  
 From 000499 to 000504  
 From 000506 to 000538  
 000542  
 000548  
 From 001025 to 001026  
 001028  
 001034  
 From 001043 to 001045  
 001047  
 001050  
 001052  
 001054  
 From 001220 to 001221  
 From 001227 to 001233  
 From 001235 to 001236  
 001238  
 001241  
 From 001243 to 001246  
 001249  
 From 001251 to 001252  
 001262  
 From 001265 to 001266  
 001758  
 From 001760 to 001766  
 001769  
 001771  
 001774  
 001777  
 001785

**Model: A29C (cont'd)**

001789  
 001792  
 From 001824 to 001834  
 From 001836 to 001843  
 001870

**Model: A29D**

From 000318 to 000442  
 From 000676 to 000994  
 From 000996 to 000999  
 From 001001 to 001078  
 From 001195 to 001259  
 From 001397 to 001473  
 From 001576 to 001598  
 001772  
 001774  
 001777  
 001789  
 001813  
 001816  
 001821  
 001825  
 001827  
 From 001831 to 001832  
 From 001834 to 001836  
 From 001838 to 001841  
 From 001843 to 001847  
 001849  
 From 001851 to 001852  
 From 001854 to 001857  
 From 001859 to 001862  
 From 001864 to 001874  
 From 002122 to 002123  
 002128  
 002132  
 From 002137 to 002139  
 From 002141 to 002146  
 From 002148 to 002149  
 002179  
 002184  
 From 002187 to 002188  
 002192  
 002202  
 002343  
 002349  
 002365  
 002372  
 002374  
 002377  
 From 002384 to 002385  
 002393  
 From 002400 to 002401  
 From 002446 to 002450  
 002452  
 From 002454 to 002455  
 002457

**Model: A29D (cont'd)**

002459  
 From 002461 to 002463  
 From 002465 to 002466

**Model: A29E**

From 000443 to 000572  
 From 001079 to 001119  
 From 001260 to 001286  
 From 001288 to 001297  
 From 001299 to 001300  
 From 001356 to 001360  
 001362  
 001364  
 From 001366 to 001376  
 From 001378 to 001381  
 From 001386 to 001389  
 From 001391 to 001393  
 001396  
 From 001686 to 001688  
 001742  
 001760  
 From 001763 to 001765  
 001768  
 From 001770 to 001771  
 From 002593 to 002610  
 002682  
 From 002687 to 002689

**Model: A29F**

From 000432 to 000633  
 From 001277 to 001512  
 From 001514 to 001579  
 From 001581 to 001710  
 From 001748 to 001828  
 From 001976 to 002029  
 From 002031 to 002048  
 From 002050 to 002061  
 From 002248 to 002343  
 From 002537 to 002540  
 From 002550 to 002551  
 From 002556 to 002558  
 002560  
 002563  
 002566  
 002571  
 002580  
 From 002584 to 002585  
 002594  
 From 002596 to 002597  
 From 002599 to 002626  
 002842  
 002847  
 002854  
 002857  
 003058  
 From 003103 to 003104  
 003108

**Model: A29F (cont'd)**  
From 003112 to 003116  
003118  
From 003124 to 003125  
003127  
From 003130 to 003137  
From 003140 to 003142  
From 003144 to 003146  
From 003148 to 003150  
From 003153 to 003154  
From 003157 to 003158

**Model: A29G**  
000001  
From 000410 to 000431  
From 000634 to 000776  
From 001829 to 001838  
From 001840 to 001870  
From 002062 to 002067  
From 002069 to 002079  
From 002081 to 002097  
002099  
From 002101 to 002103  
002157  
002159  
From 002161 to 002163  
From 002165 to 002167  
From 002170 to 002180  
From 002182 to 002184  
002186  
From 002188 to 002190  
From 002192 to 002194  
From 002196 to 002197  
From 002199 to 002201  
From 002203 to 002206  
From 002209 to 002213  
From 002217 to 002218  
From 002221 to 002223  
002225  
002227  
From 002230 to 002231  
002242  
002244  
002247  
002729  
002743  
003312  
003506  
003517

**Model: A29H**  
From 000305 to 000350

**Model: A29J**  
From 000248 to 000304

**Model: A29K**  
From 000430 to 000497

**Model: A29K (cont'd)**  
From 000499 to 000505  
From 000507 to 000508  
From 000510 to 000515

**Model: A29L**  
From 000105 to 000177  
From 000344 to 000429

**Model: A29M**  
From 000477 to 000543  
From 000545 to 000643  
From 000645 to 000676  
From 000679 to 000698  
From 000700 to 000715

**Model: A29N**  
From 000001 to 000124  
From 000390 to 000476