



Attachment 1

Part Number	Quantity	Acct #	Order #	Date Shipped
N20959EA	10	97182	304060	6/11/2008
N20959EA	10	97182	304060	7/23/2008
N20959EA	5	97182	304060	8/26/2008
N20959EA	443	97184	17261	6/17/2008
N20959EA	584	97184	17261	7/15/2008
N20959EA	145	97184	17261	8/12/2008
N20959EA	48	97184	17261	9/12/2008
N20959EA	100	97184	17261	9/23/2008
N50009A	141	97184	17274	6/3/2008
N50009A	21	97184	553382	8/13/2008
N50009A	14	97184	553382	9/16/2008
N20959EA	8	10001248	545435	6/18/2008
N20959EA	8	10001248	585917	9/23/2008
N20959EA	9	10001251	561890	8/5/2008
N20959EA	57	10004094	512471	6/17/2008
N20959EA	80	10004094	512471	7/22/2008
N20959EA	74	10004094	512471	8/19/2008
N20959EA	58	10004094	512471	9/23/2008
N50009A	230	10004094	461957	6/3/2008
N50009A	303	10004094	461957	6/10/2008
N50009A	302	10004094	461957	7/8/2008
N50009A	296	10004094	461957	8/19/2008
N50009A	290	10004094	461957	9/16/2008
N20959EA	8	21000598	589887	9/24/2008
N20959EA	1	21000598	594692	9/26/2008
N20959EA	5	21000598	596281	9/30/2008



Attachment 2

service Bulletin

Haldex Quick Release Valve Date Code Identification

The specification used by Haldex to identify Quick Release Valves defines a six (6) character alpha numeric date code. The first three (3) digits indicate the Gregorian Calendar day of the year. The fourth alpha character indicates the production shift. The fifth digit indicates the last number of the year of manufacture. The last alpha character indicates the manufacturing location.

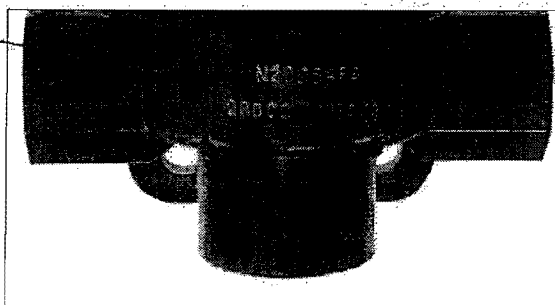
The Date Code on the Haldex QRV Valve shown here indicates:

Gregorian Date - 183 (July 1st)

Shift - A (First Shift)

Year - 8 (2008)

Location - K (Iola, Kansas)



Shift and Location indicators used by Haldex on Quick Release Valves:

Shift	Location	
A = First	A = Apodaca, Mexico	M = Grand Haven, Michigan
B = Second	B = Blue Springs, Missouri	N = Marion, North Carolina
C = Third	C = Lang Fang, China (ASIMCO)	S = Landskrona, Sweden
	G = Heidelberg, Germany	T = Paris, Tennessee
	H = Hungary	U = Redditch, U.K.
	K = Iola, Kansas	Z = Suzhou, China

Haldex Commercial Vehicle Systems

Haldex Brake Products Corporation
18835 N. Pinnacle Avenue
Kansas City, MO 64153
Phone: 816-891-3478
Fax: 816-891-0447

Haldex Limited
525 Southgate Drive, Unit 1
Guelph, Ontario Canada N1G 3W6
Phone: 519-826-7723
Fax: 519-826-9497

www.haldex.com

US 3/09 270 IN-HOUSE

service Bulletin

Haldex

Quick Release Valve Replacement Instructions

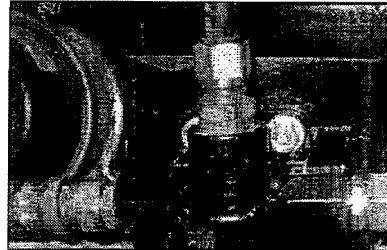
The quick release valve (QRV) may be located in several different places, depending on the make and model of vehicle. Please refer to an air system schematic diagram for the particular vehicle to determine where the quick release valve is installed in the vehicle air system.

CAUTION: Block vehicle wheels. Take proper precautions when working with compressed air. Drain all air pressure from the air system and wear safety glasses before beginning any service.

Step 1

Locate the QRV(s) on the vehicle.

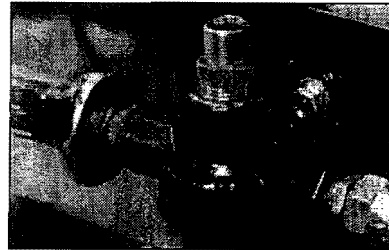
Fig. 1 shows a QRV as it is typically installed on the frame.

Fig. 1

Step 2

Remove all of the hoses from the Supply and Delivery Ports of the valve. Mark/identify hoses as they are removed to assure proper reassembly.

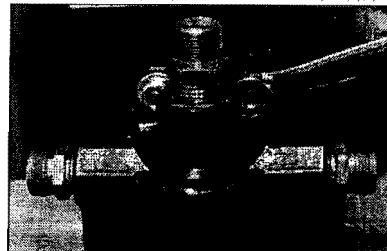
Fig. 2 shows removal of the hoses.

Fig. 2

Step 3

Remove the bolts holding the QRV to the vehicle and remove the valve from the vehicle. Haldex recommends replacing the bolts.

Fig. 3 shows removal of the bolts.

Fig. 3

Quick Release Valve Replacement Instructions Continued On Reverse Side

Attachment 3

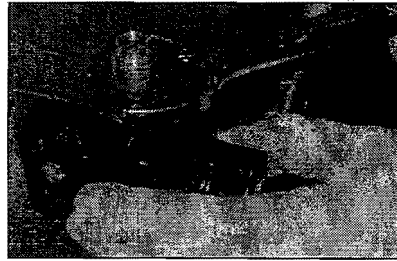
Quick Release Valve Replacement Instructions Continued

Step 4

If required, assemble the appropriate size D.O.T.-approved fittings into the new QRV. Haldex recommends lightly coating the threads of the new fittings with a PTFE (Teflon) thread sealant. Do NOT use Teflon tape. Torque the fittings to a range of 75 to 200 in.-lbs.

Fig. 4 shows installation of the fittings.

Fig. 4



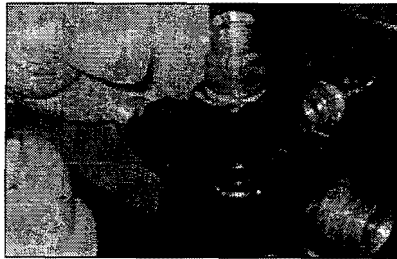
Step 5

Install the QRV onto the vehicle with 5/16 inch bolts. Recommended bolt torques:

- 5/16"-18 Grade 5 bolts = 17 ft.-lbs.
- 5/16"-24 Grade 5 bolts = 19 ft.-lbs.
- 5/16"-18 Grade 8 bolts = 24 ft.-lbs.
- 5/16"-24 Grade 8 bolts = 27 ft.-lbs.

Fig. 5 shows the QRV being mounted onto the vehicle.

Fig. 5



Step 6

Install the vehicle air hoses onto the valve. Use wrenches on both the fitting and the hose to make certain that fitting torques into the QRV remain in the range of 75 to 200 in.-lbs.

Fig. 6 shows a hose being connected.

Fig. 6



Step 7

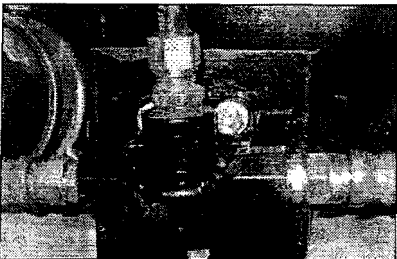
Verify that all connections are tight.

Pressurize the air system and check the connections for leaks.

Check the brake system for proper operation before driving the vehicle. Road test the vehicle.

Fig. 7 shows a correctly replaced Quick Release Valve.

Fig. 7



Haldex Commercial Vehicle Systems

Haldex Brake Products Corporation
19500 N. Pomona Avenue
Kansas City, MO 64153
Phone: 816-891-2470
Fax: 816-891-9447

Haldex Limited
825 Southgate Drive, Unit 1
Guelph, Ontario, Canada N1G 3Y6
Phone: 519-826-7223
Fax: 519-826-8487

www.haldex.com

US 3/09 270 IN-HOUSE