

Service Bulletin

From: Kalman Takacs, Field Service Engineer
Subject: First Cross Member of Trailer Inspection
Date: 04/14/2009
SBN: SB-09-04-01
Affected: 60BRT and 65 BRT buses built before September 30th, 2007

SAFETY PRECAUTIONS MUST BE FOLLOWED ACCORDING TO ACCEPTED INDUSTRY STANDARDS AND LOCAL/PROPERTY REQUIREMENTS.

1. GENERAL INFORMATION:

JM
04/23/2009

- Turn off the battery main switch(es).
- Properly position bus on wheel lifts or over a pit.
 - a. If wheel lifts are used, place four jack stands underneath the colored jacking pads of the front coach and two at the rear coach behind the C-axle.
 - b. Two more jack stands are necessary underneath the second cross member of the trailer (rear coach), (see below).

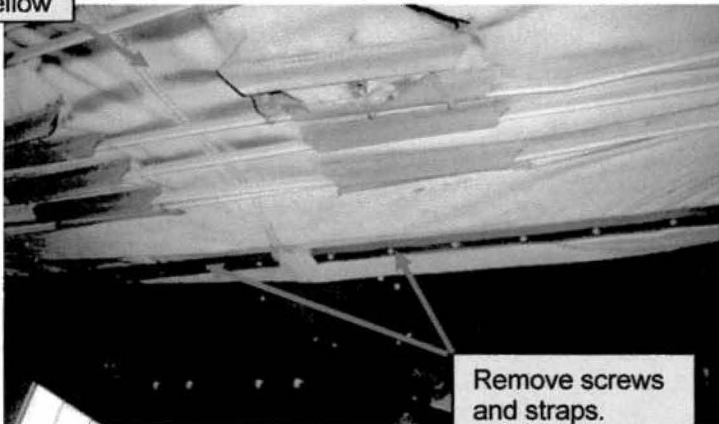


Place jack stands underneath the 2nd cross member of the trailer (rear coach)

2. PREPARATION OF INSPECTION

- Remove mounting screws and straps those securing the bellow cover to the bottom of the 1st cross member of the trailer (rear coach). Move away the cover from the beam and secure it with a rope.

Bellow

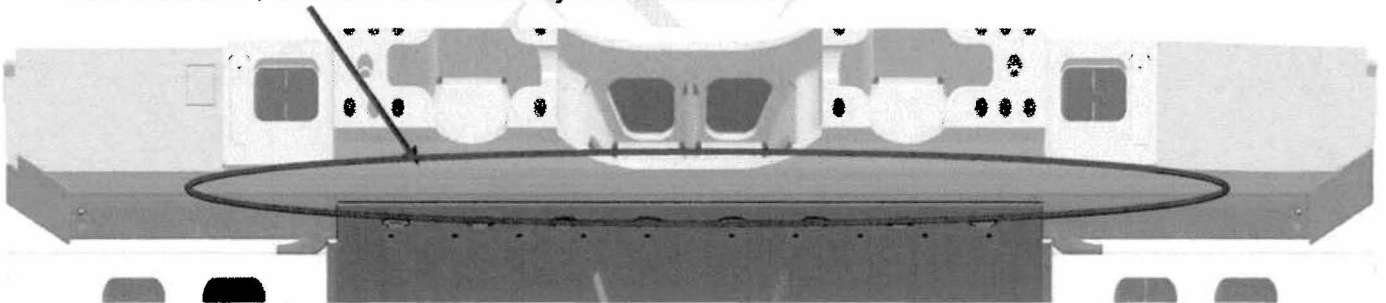


Remove screws
and straps.



3. INSPECTION

- Visually check welds at the lower forward edge of the articulation joint of the trailer (First Cross Member, circled in the drawing below). This view is from the FRONT looking REARWARD, with the articulation joint uninstalled.



- If crack was found then:***
 - The bus has to be taken out of service.**
 - Mark the location on the attached inspection sheet.
 - Record the length of the crack.
 - Notify immediately Kalman Takacs at 256-453-7583.
 - Send the completed inspection sheet back to 106 National Drive, Anniston AL36207 attn. Kalman Takacs. Or email the inspection sheet to kalman.takacs@nabiusa.com

4. REASSEMBLY

- Reinstall the bellow with the two straps and screws.
- Remove jack stands and lower the bus.
- Turn on the main electric switch(es).