



April 2010

Dealer Service Instructions for:

Safety Recall J17

Front Suspension Upper Ball Joints

Models

2002 - 2003 (KJ) Jeep® Liberty

NOTE: This recall applies only to the above vehicles built from May 1, 2002 through September 30, 2002 (MDH 050100 through 093023).

IMPORTANT: Only the above vehicles sold or currently registered in "salt belt" states (where large amounts of road salt are used for snow and ice removal) are involved. See "Owner Notification and Service Scheduling" section for a list of salt belt states.

IMPORTANT: Some of the involved vehicles may be in dealer used vehicle inventory. Dealers should complete this recall service on these vehicles before retail delivery. Dealers should also perform this recall on vehicles in for service. Involved vehicles can be determined by using the VIP inquiry process.

Subject

The front suspension upper control arm ball joints on about 42,000 of the above vehicles may experience a loss of lubricant that can lead to corrosion, accelerated wear, and possibly separation while driving. A separated upper ball joint while driving could cause a crash without warning.

Repair

The front suspension right and left side upper control arms must be replaced.

Parts Information

Part Number Description

CAFZJ170AA Upper Control Arms

Each package contains the following components:

<u>Quantity</u>	<u>Description</u>
2	Arm, Upper Control
2	Nuts

Each dealer to whom vehicles in the recall were assigned will receive enough Upper Control Arm Packages to service about 20% of those vehicles.

Part Number Description

04318039AC Penetrant, Mopar Rust

NOTE: One spray can of Mopar Rust Penetrant will coat the upper control arm bolts on about 10 vehicles.

Special Tools

The following special tool is required to perform this repair:

- C-4150A Separator, Ball Joint

Service Procedure

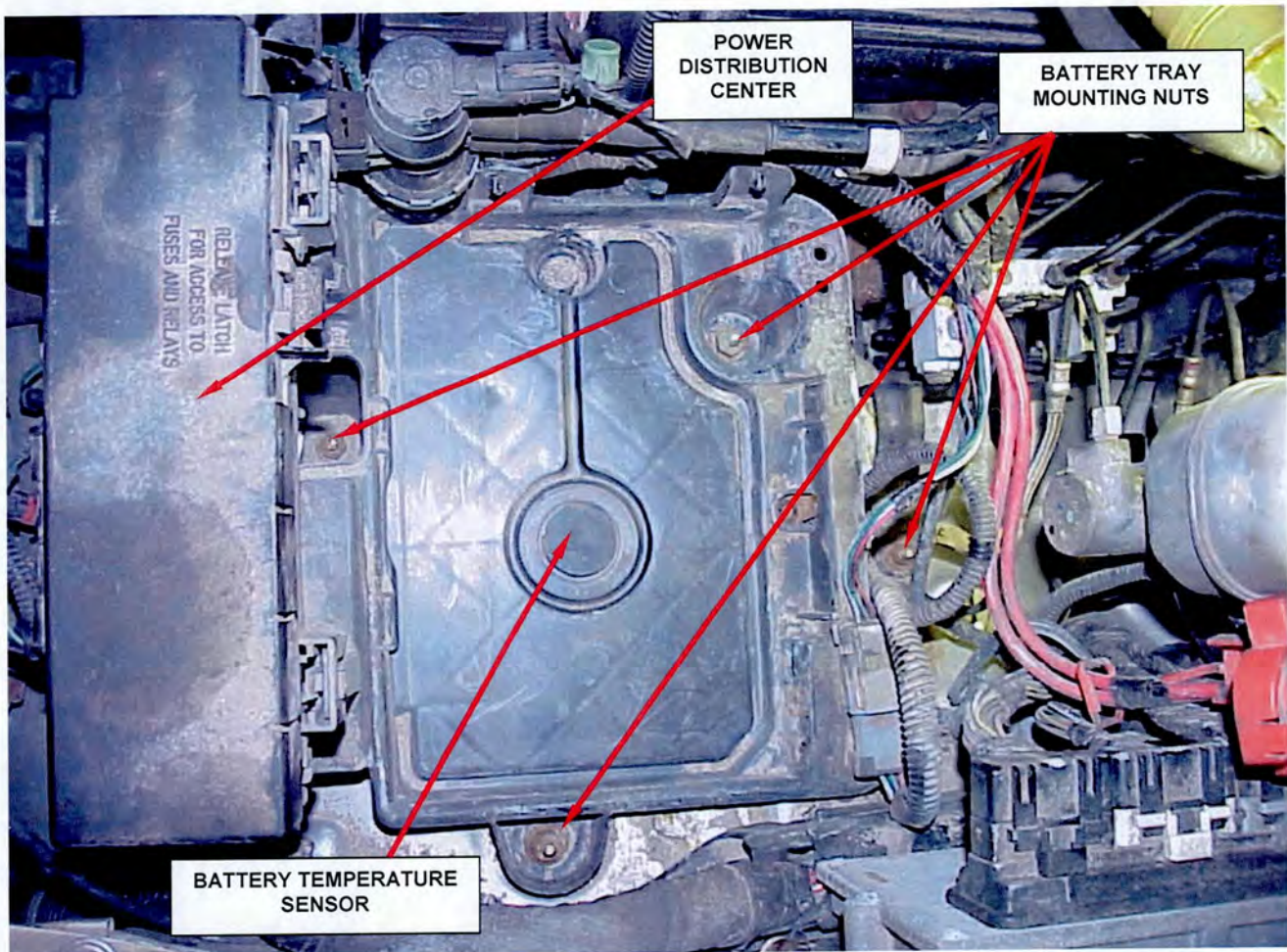


Figure 1 – Relocate PDC and Remove Battery Tray

1. Position the vehicle to be lifted on the hoist.
2. Open the hood.
3. Spray the upper control arm nuts with Mopar Rust Penetrant (P/N 04318039AC).
4. Disconnect the battery negative and positive battery cables and remove the battery from the vehicle.
5. Detach the Power Distribution Center (PDC) and reposition it to the side (Figure 1).
6. Remove the four battery tray mounting nuts (Figure 1).
7. Lift the battery tray, disconnect the battery temperature sensor from the battery tray and remove the battery tray from the vehicle.

Service Procedure (Continued)

8. Remove the engine air cleaner lid and air cleaner housing (Figure 2).
9. Remove the speed control servo mounting nuts, disconnect the servo electrical connector and relocate the servo to gain access to the upper control arm bolts (Figure 3).
10. Raise the vehicle on a frame lift hoist so that the wheels are just off the ground.
11. Remove both front tire and wheel assemblies.

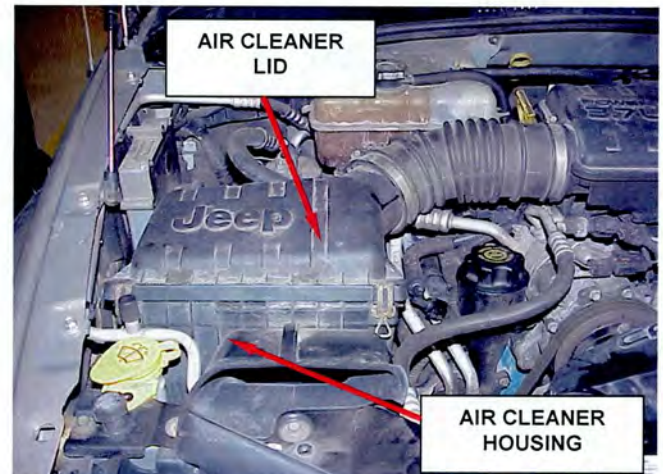


Figure 2 – Remove Air Cleaner Assembly

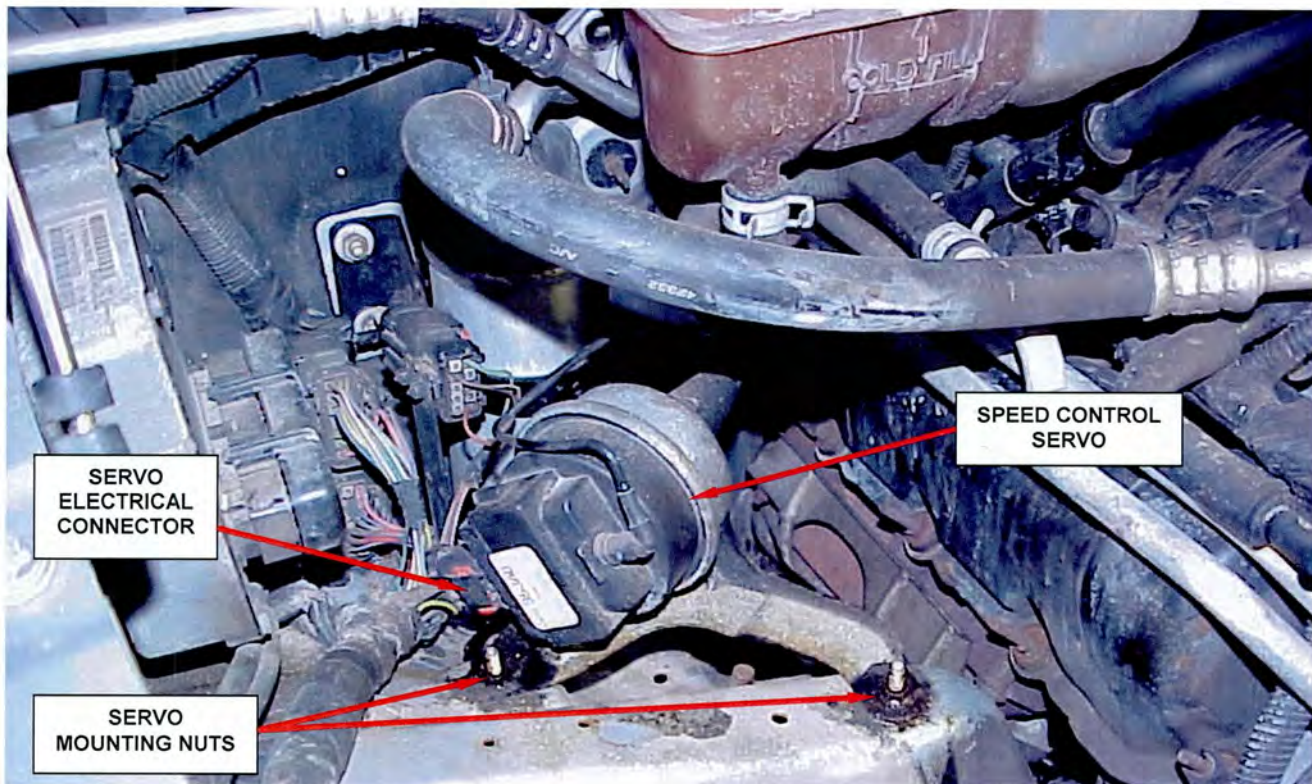


Figure 3 – Relocate Speed Control Servo

Service Procedure (Continued)

12. Remove and discard the upper ball joint nuts from both upper ball joints (Figure 4).
13. Separate the right and left upper ball joint from the right and left steering knuckle using tool C-4150A (Figure 5).
14. Lower the vehicle on the hoist so the front suspension is just off the ground.

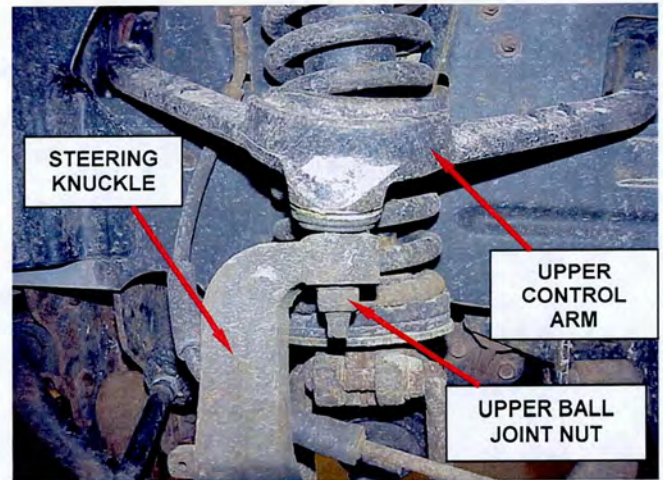


Figure 4 – Left Side Shown

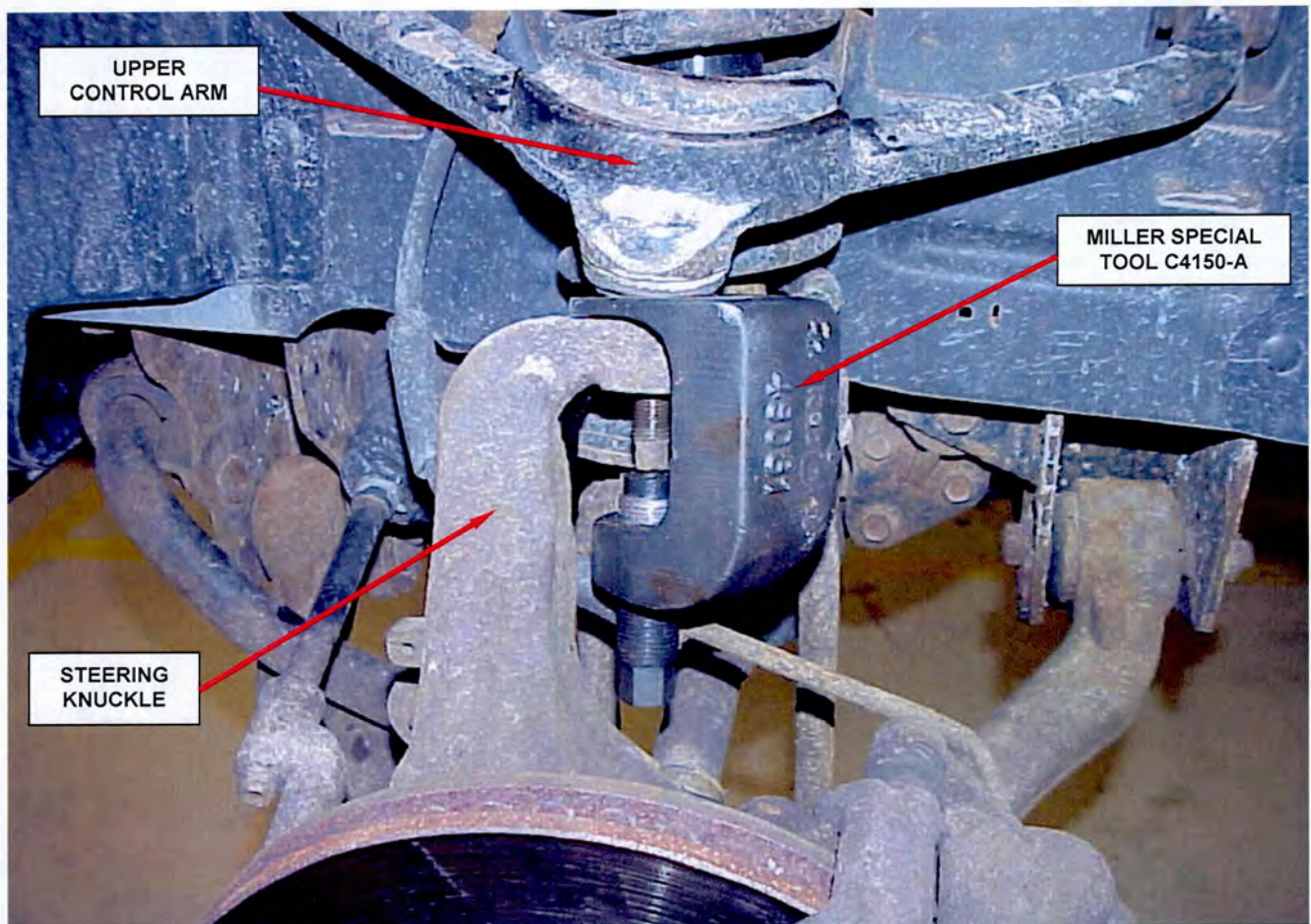


Figure 5 – Separate Ball Joint from Steering Knuckle

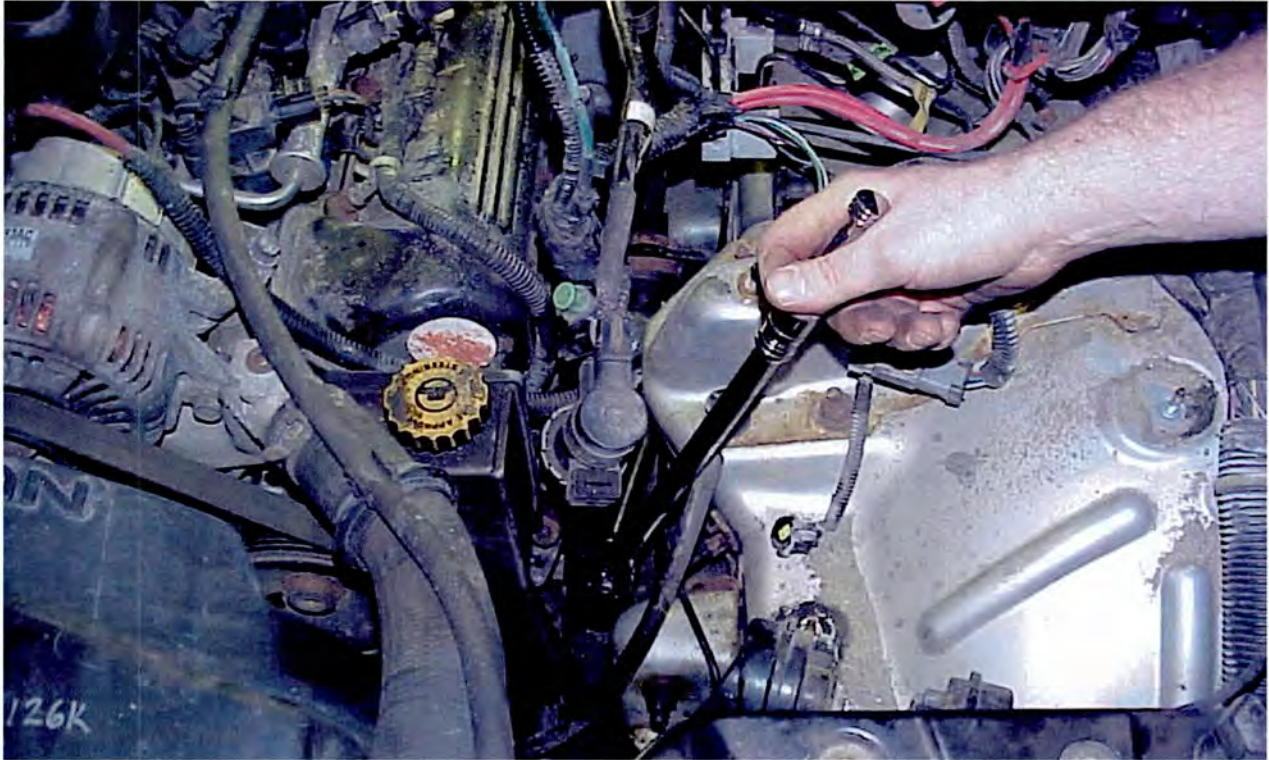
Service Procedure (Continued)

Figure 6 – Removing the Rear Control Arm Bolt (Left Side)

15. Remove the left upper control arm using the following procedure:
- Remove and save the upper control arm rear bolt by using a ratchet, extension and 18 mm swivel socket under the steering shaft and positioned by the power steering reservoir (Figure 6).

- Remove and save the upper control arm front bolt.

CAUTION: Do not allow the anti-rotation flag on the upper control arm bolt to come in contact with the brake tube (Figure 7). Damage to the brake tube may occur.

- Remove and discard the left upper control arm from the vehicle.

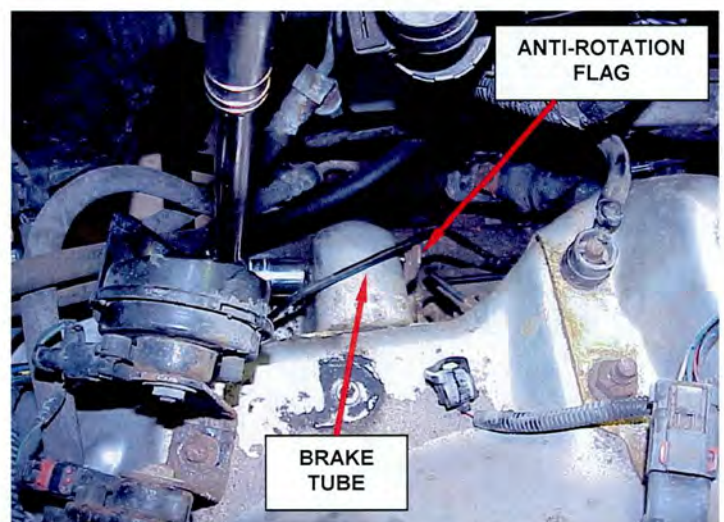


Figure 7 – Brake Tube

Service Procedure (Continued)

16. Install the left upper control arm using the following procedure:
 - a. Install the upper control arm into position on the vehicle.
 - b. Having an assistant hold the upper control arm in position, install the upper control arm front bolt and nut, but do not tighten the bolt at this time.
 - c. Having an assistant hold the upper control arm in position, install the upper control arm rear bolt and nut, but do not tighten the bolt at this time.
 - d. Install the new upper ball joint nut supplied in the kit. Tighten the nut to 60 ft. lbs. (81 N·m).

17. Remove the right upper control arm using the following procedure:
 - a. Remove and save the upper control arm rear bolt.
 - b. Remove and save the upper control arm front bolt.

CAUTION: Do not allow the anti-rotation flag on the upper control arm bolt to come in contact with the brake tube (Figure 7). Damage to the brake tube may occur.
 - c. Remove and discard the right upper control arm from the vehicle.

18. Install the right upper control arm using the following procedure:
 - a. Install the upper control arm into position on the vehicle.
 - b. Having an assistant hold the upper control arm in position, install the upper control arm front bolt and nut, but do not tighten the bolt at this time.
 - c. Having an assistant hold the upper control arm in position, install the upper control arm rear bolt and nut, but do not tighten the bolt at this time.
 - d. Install the new upper ball joint nut supplied in the kit. Tighten the nut to 60 ft. lbs. (81 N·m).

19. Raise the vehicle on the hoist and install both front tire and wheel assemblies. Tighten the lug nuts to 100 ft. lbs. (135 N·m).

20. Lower the vehicle from the hoist.

21. Jounce the front suspension several times to settle the suspension.

Service Procedure (Continued)

22. Tighten the front and rear upper control arm bolts on both sides to 90 ft. lbs. (122 N·m).
23. Verify that all brake tubes near the upper control arm mounting bolts are properly routed and in their retainer clips.
24. Connect the speed control servo electrical connector (Figure 3).
25. Place the speed control servo into position and install the mounting nuts (Figure 3).
26. Install the engine air cleaner housing and lid (Figure 2).
27. Connect the battery temperature sensor to the battery tray (Figure 1).
28. Install the battery tray into position and install the four mounting nuts (Figure 1).
29. Install the battery. Tighten the battery hold down bolt to 35 in. lbs. (4 N·m).
30. Clip the power distribution center into position.
31. Connect the positive battery cable to the battery.
32. Connect the negative battery cable to the battery.
33. Close the hood.

Completion Reporting and Reimbursement

Claims for vehicles that have been serviced must be submitted on the DealerCONNECT Claim Entry Screen located on the Service tab. Claims submitted will be used by Chrysler to record recall service completions and provide dealer payments.

Use the following labor operation number and time allowance:

	Labor Operation Number	Time Allowance
Replace right and left upper control arms	02-J1-71-82	1.7 hours

Add the cost of the recall parts package plus applicable dealer allowance to your claim.

NOTE: See the Warranty Administration Manual, Recall Claim Processing Section, for complete recall claim processing instructions.

Dealer Notification

To view this notification on DealerCONNECT, select “Global Recall System” on the Service tab, then click on the description of this notification.

Owner Notification and Service Scheduling

All involved vehicle owners known to Chrysler are being notified of the service requirement by mail. They are requested to schedule appointments for this service with their dealers. A generic copy of the owner letter is attached.

Enclosed with each owner letter is an Owner Notification postcard to allow owners to update our records if applicable.

Only vehicles originally sold or currently registered in the following states are involved in this notification.

- | | | |
|--------------------|----------------------|-----------------------|
| <i>Connecticut</i> | <i>Massachusetts</i> | <i>Pennsylvania</i> |
| <i>Delaware</i> | <i>Michigan</i> | <i>Rhode Island</i> |
| <i>Illinois</i> | <i>Minnesota</i> | <i>Vermont</i> |
| <i>Indiana</i> | <i>Missouri</i> | <i>Virginia</i> |
| <i>Iowa</i> | <i>New Hampshire</i> | <i>Washington, DC</i> |
| <i>Kentucky</i> | <i>New Jersey</i> | <i>West Virginia</i> |
| <i>Maine</i> | <i>New York</i> | <i>Wisconsin</i> |
| <i>Maryland</i> | <i>Ohio</i> | |

Vehicle Lists, Global Recall System, VIP and Dealer Follow Up

All involved vehicles have been entered into the DealerCONNECT Global Recall System (GRS) and Vehicle Information Plus (VIP) for dealer inquiry as needed.

GRS provides involved dealers with an updated VIN list of their incomplete vehicles. The owner's name, address and phone number are listed if known. Completed vehicles are removed from GRS within several days of repair claim submission.

To use this system, click on the “**Service**” tab and then click on “**Global Recall System.**” Your dealer's VIN list for each recall displayed can be sorted by: those vehicles that were unsold at recall launch, those with a phone number, city, zip code, or VIN sequence.

Dealers must perform this repair on all unsold vehicles before retail delivery. Dealers should also use the VIN list to follow up with all owners to schedule appointments for this repair.

Recall VIN lists may contain confidential, restricted owner name and address information that was obtained from the Department of Motor Vehicles of various states. Use of this information is permitted for this recall only and is strictly prohibited from all other use.

Additional Information

If you have any questions or need assistance in completing this action, please contact your Service and Parts District Manager.

Customer Services Field Operations
Chrysler Group LLC