



RECALL CAMPAIGN

NHTSA # 09V-103

TC #09-093

REQUIRES PARTS TO BE ORDERED FROM Jayco for every unit.

SUBJECT:	Ground Wire Modification
UNITS AFFECTED:	2009 Legacy Fifth Wheel 37RLSA "XD" 99XD0015-20 36RLMS "XE" 99XE0015-54
ACTION REQUIRED:	Modify the current copper ground wire and install an additional ground wire
JOB OPERATION CODE:	9901083
SERIES CODE:	N/A
FLAT RATE:	.5 hours
KIT NUMBER	0700142
KIT CONTAINS:	1 ea. Ground lug 1 ea. 1/4 " self-tapping screw w/star washer 5 ft. 4 gauge stranded wire 1 ea. Bare copper battery terminal ring
TOOLS REQUIRED:	Wire cutter Screw driver(s) - slotted & square head Screw gun with a 3/8" drive socket Wire stripper or utility knife
ADDITIONAL MATERIAL REQUIRED	Electrical tape

**THESE PARTS CAN ONLY BE ORDERED USING THE ORDER FORM.
YOU CAN NOT ORDER THIS THROUGH EMPART**

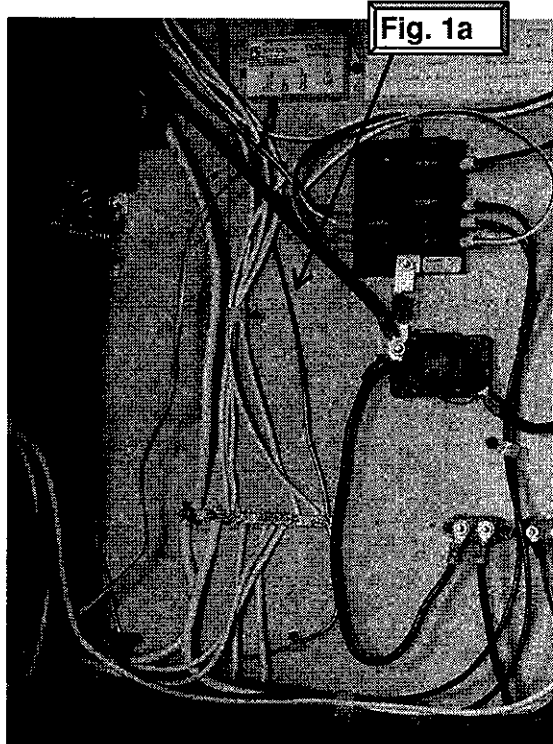
Instructions

1. Locate copper ground wire

Locate the copper ground wire in the utility area behind the front storage compartment (**Fig. 1a**).

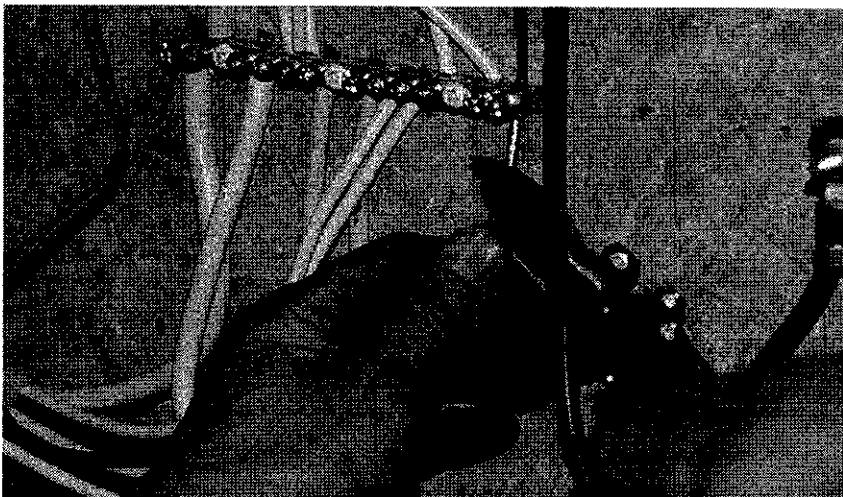
The ground wire is fastened to the frame and travels through the buss bar connecting to the converter.

NOTE: The location of the utility area and the general application of the buss bar and ground wire will be the same in all models. The overall electrical layout and application may vary in each model.



2. Modify the copper ground wire

Using a wire cutter, cut the copper ground wire approximately 1" below the buss bar. There are no additional modifications required for the copper ground wire attached to the buss bar.

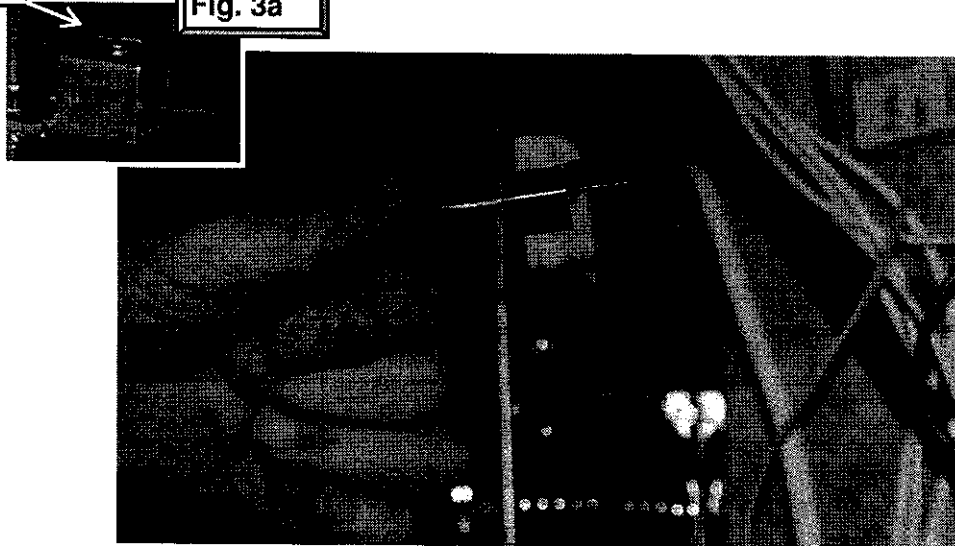


3. Attach copper ground wire to ground lug

Attach the ground lug to the loose end of the copper ground wire that is fastened to the converter. Do this by turning the ground lug set screw (Fig 3a.) counterclockwise until the wire can be inserted under the screw. Make sure the wire is inserted far enough into the lug that it will be held securely by the set screw. Turn the set screw clockwise until the ground wire is held firmly in place by the set screw.

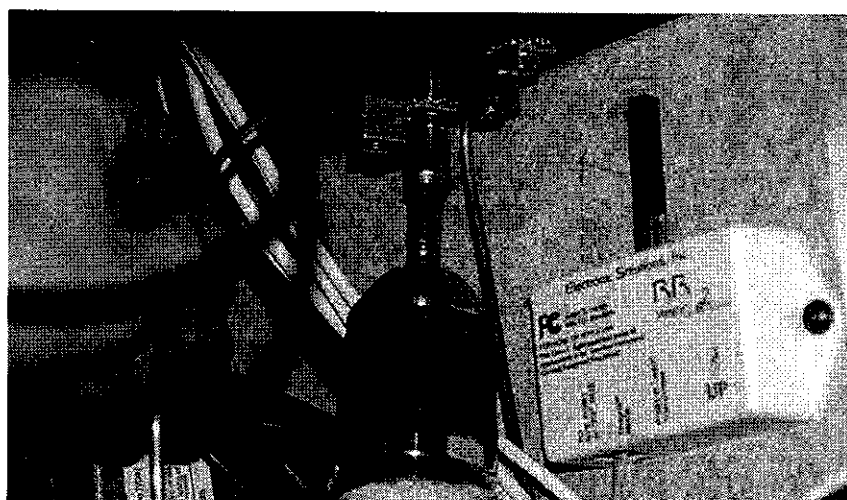
Ground lug
set screw

Fig. 3a



4. Attach ground wire lug to frame

Attach the ground lug to the unit frame using the 1/4" self tapping screw and star washer. NOTE: The washer should be added so that it is between the ground lug and the frame.



5. Add 4 gauge stranded wire

Remove approximately 3/8" of the insulation from one end of the 4 gauge wire (which will be inserted into the buss bar cavity) and 5/8" of insulation from the other end (which will be inserted into terminal ring). (Fig 5a)

NOTE: Be careful not to damage the copper wire when removing the insulation.

Damage to the wire will reduce efficiency of the connection.

Locate an empty cavity on the buss bar and loosen the set screw by turning it counterclockwise. Insert the (3/8") end of the 4 gauge wire into the bottom of the buss bar (Fig 5b). Be sure that only the copper portion of the wire is inserted in the buss bar cavity to insure a secure connection. Tighten the set screw on the buss bar by turning it clockwise.

NOTE: Make sure the buss bar set screw on the 4 gauge wire and the copper ground wire wire are securely tightened. Check the bus bar set screws next to each wire to ensure they remained securely tightened while you were working on the ground wire applications.

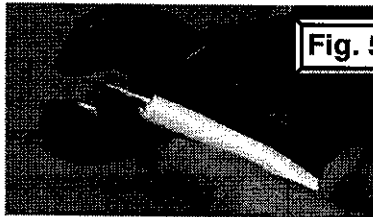


Fig. 5a

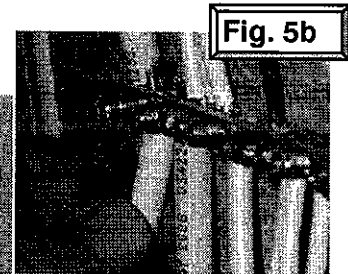
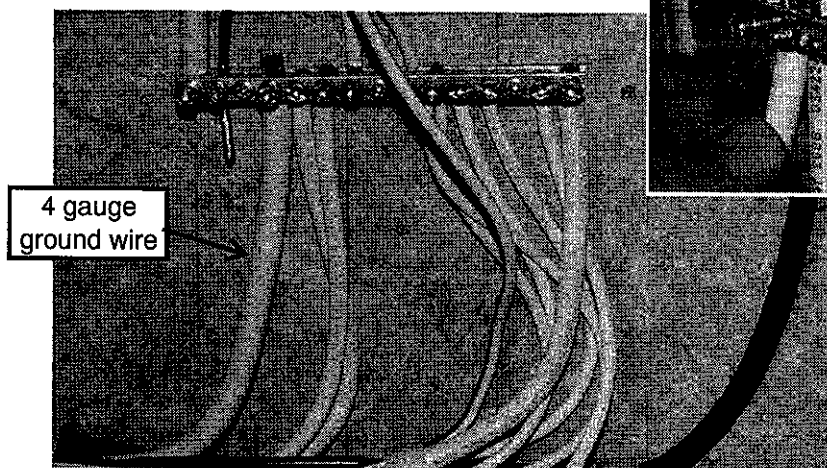


Fig. 5b



4 gauge
ground wire

6. Connect 4 gauge wire to existing battery ground wire

Insert the loose end of the 4 gauge wire into the battery compartment through the grommet in the compartment wall. Remove the terminal from the end of the existing white battery ground cable and strip back (5/8") of insulation from the end. Take the end of the existing battery ground wire and the end of the newly installed ground wire and insert them in the terminal provided in the kit (Fig. 6a)

NOTE: You may want to shorten the newly installed ground wire so it better matches the length of the existing ground wire. Length of the existing wire may vary between models.

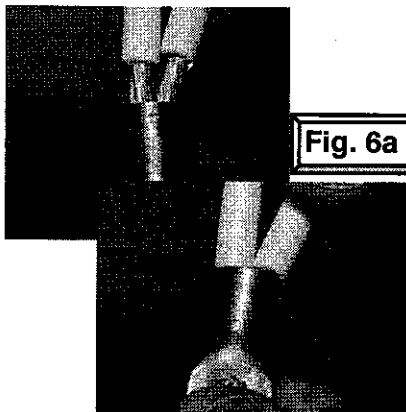
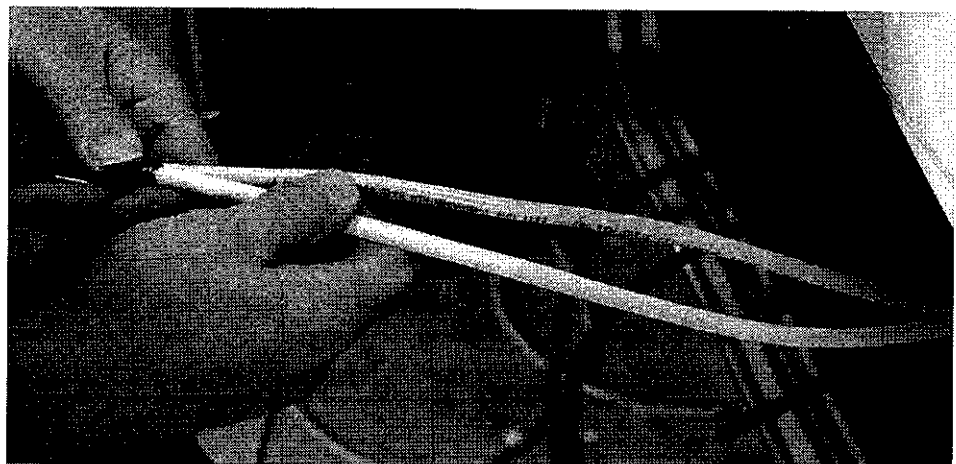


Fig. 6a



6. Connect 4 gauge wire to existing battery ground wire continued...

After you have inserted the wire(s) into the terminal ring, crimp the terminal ring until the wires are securely fastened in the ring. Wrap the (2) ground wires to the terminal ring using electrical tape so that the wires and terminal ring are securely fastened together. (**Fig. 6b**). Secure the (2) ground wires together using electrical tape (**Fig. 6c**).

Fig. 6b

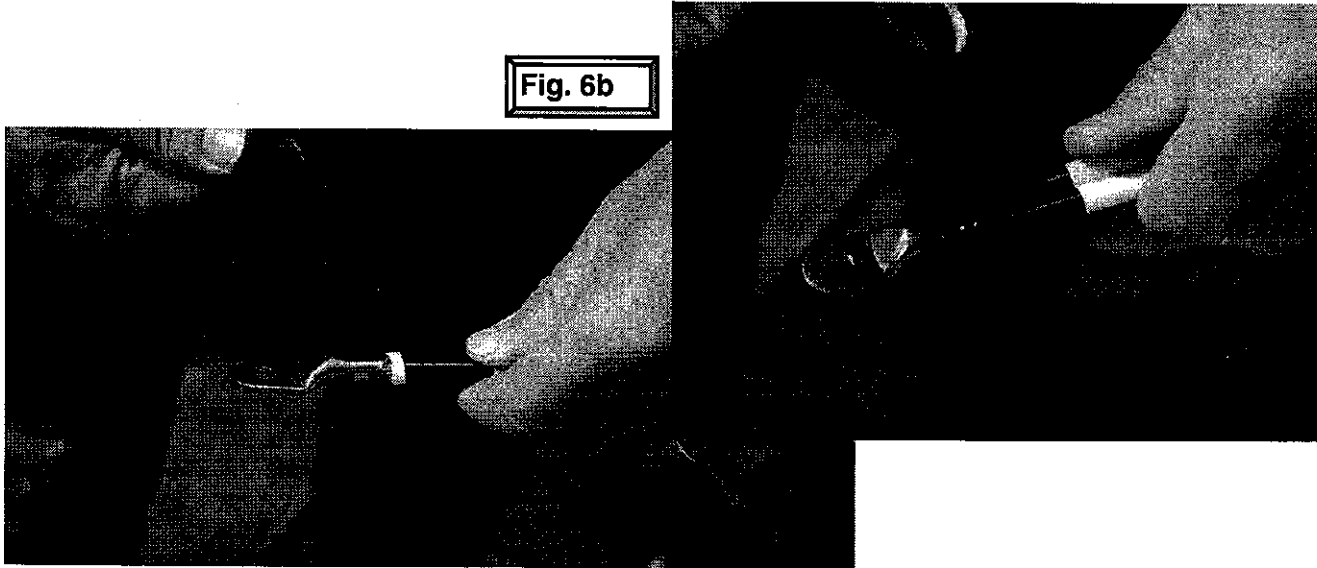


Fig. 6c

