



Mercedes-Benz

Mercedes-Benz USA, LLC
A Daimler Company

SENT VIA CERTIFIED U.S. MAIL

January 21, 2009

National Highway Traffic Safety Administration
Office of Defect Investigation
Attention: George Person, Chief Recall Management Division NVS 215
1200 New Jersey Avenue, S.E.
Washington, D.C. 20590

Re: 49 CFR Part 573; Recall of Mercedes-Benz M-Class (164), GL-Class (X164), and R-Class (251) vehicles to check/replace the Power Steering rack

Dear Mr. Person:

Pursuant to 49 CFR Part 573.6(c)(10), this letter contains 2 documents that were communicated to our dealers on the above subject and will be submitted in the Mercedes-Benz USA, LLC (MBUSA) regular monthly mailing for the month of January, 2009.

Manufacturer's Campaign Identification Number
2008120011

NHTSA Recall Number
08V-682

Should you have any questions, please do not hesitate to contact me at 201-573-2719.

Sincerely,

Gary H. Bowne
Department Manager, Product Compliance, Analysis, Safety and Emissions

GB:sk

Enclosure



Mercedes-Benz are registered trademarks of Daimler, Stuttgart, Germany

Mercedes-Benz USA, LLC
One Mercedes Drive
P.O. Box 350
Montvale, NJ 07645-0350
Phone (201) 573-0600
Fax (201) 573-0117
www.MBUSA.com



Mercedes-Benz

MERCEDES-BENZ USA, LLC

138 Mercedes Drive, P.O. Box 359, Montvale, NJ 07645-0359

Phone: (201) 537-0000

Fax: (201) 579-0112

MBUSA.com

newschannel UPDATE

TO: Mercedes-Benz Dealer Principals, General Managers, Sales Managers, Service Managers, Parts Managers

FROM: Gary Bowne; Department Manager; Product Compliance, Analysis, Safety & Emissions; Engineering Services

DATE: January 21, 2009

RE: **Recall Campaign 2008120011- Check the Power Steering Rack, Replace if Necessary, Models 164, X164, 251. Model Year 2008**

On December 17, 2008 the National Highway Traffic Safety Administration (NHTSA) was notified that Mercedes-Benz USA, LLC will conduct a voluntary Recall Campaign on certain Model Year 2008 ML (164), GL (X164) and R-Class (251) vehicles with regard to the power steering rack. This notification is posted on the NHTSA web site and may generate some customer questions.

Daimler AG (DAG) has determined that a defect may exist in the driving pin used to control the oil pressure of the power steering. This defect resulted from a manufacturing process flaw at the supplier. If a defective driving pin exists in a vehicle and the pin breaks during normal vehicle turning, the normally available hydraulic support function will no longer function and steering wheel operation will be limited which may lead to a vehicle crash.

Mercedes-Benz USA, LLC therefore has initiated a recall of the power steering racks in all potentially affected vehicles. A date code on the power steering racks will be checked and if the power steering rack belongs to the affected date code it will be replaced without charge.

The Recall Campaign is being launched today and the **577 affected vehicles** will be flagged in VMI. The repair time is 0.4 hours to check and 5.3 hours to check and replace the power steering rack. The power steering rack replacement rate is approximately 100%.

Dealers may order replacement parts as required.

A copy of the campaign bulletin is attached, and may also be found on StarTekInfo.

Owner notification will be sent January 28, 2009.

When scheduling customers for an appointment please ensure that you are aware of any open campaigns in VMI so that the customer is advised about the time necessary to complete all campaigns.

Note: VMI must always be checked before performing campaigns to verify that the campaign is required on a specific vehicle.

Dealers may also identify vehicles subject to a campaign through NetStar by selecting "Campaign" under the Controlling tab. Only vehicles that have been retailed by the respective dealer will be displayed within this program.

While we regret any inconvenience this causes, Mercedes-Benz USA, LLC is determined to maintain a high level of vehicle quality and customer satisfaction.

Please refer all customer inquiries to the Customer Assistance Center at 1-800-FOR_MERcedes (1-800-367-6372).



SERVICE

FILE: SERVICE: GROUP 00 OF SERVICE INFORMATION BINDER
PARTS: GROUP I OF INFORMATION – PARTS & ACCESSORIES BINDER

Campaign No. 2008120011, January 2009

TO: ALL MERCEDES-BENZ CENTERS

SUBJECT: **Models 164/164.8/251 Model Year 2008**
Replace Power Steering Rack

This Recall Campaign has been initiated because Daimler AG has determined that a defect may exist in the driving pin used to control the oil pressure of the power steering. This defect resulted from a manufacturing process flaw at the supplier. If a defective driving pin exists in a vehicle and the pin breaks during normal vehicle turning, the normally available hydraulic support function will no longer function and steering wheel operation will be limited. The dealer will check VIN lists and date codes and replace the power steering rack, if necessary, at the next workshop visit.

Attached is a sample copy of a letter which owners of the affected vehicles will receive.

Prior to performing this Recall Campaign:

- Please check VMI to determine if the vehicle is involved in the Campaign and if it has been previously repaired.
- Please review the entire Recall Campaign bulletin and follow the repair procedure exactly as described.

Please note that Recall and Service Campaigns **do not expire** and may also be performed on a vehicle with a vehicle status indicator.

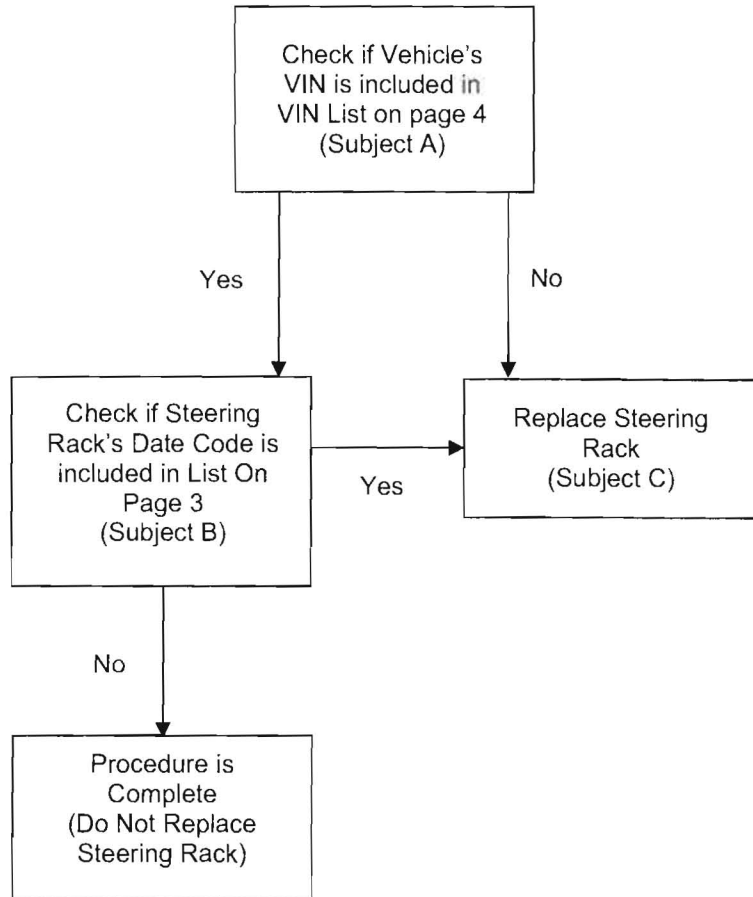
Approximately 577 vehicles are involved.

Order No. T-RC-2008120011

This bulletin has been created and maintained in accordance with MBUSA-SLP S423QH001, Document and Data Control, and MBUSA-SLP S424HH001, Control of Quality Records.

Procedure

Work process chart



A. Check vehicle VIN

1. If vehicle's VIN is **NOT** listed on VIN list (page 4) proceed to **Subject C: Replace Power Steering Rack**
2. If vehicle's VIN **IS** listed on VIN list (page 4) check power steering rack's date code to determine if power steering rack requires replacement:
Proceed to **Subject B: Check Steering Rack Date Code**

B. Check Steering Rack Date Code

1. Remove lower engine compartment paneling; refer to WIS for model:
 - 164/164.8: AR61.20-P-1105RT
 - 251: AR61.20-P-1105GZ
2. Check if date code (A, Figure 1) indicated on rack is listed below:
057 0360
060 0192
060 0305

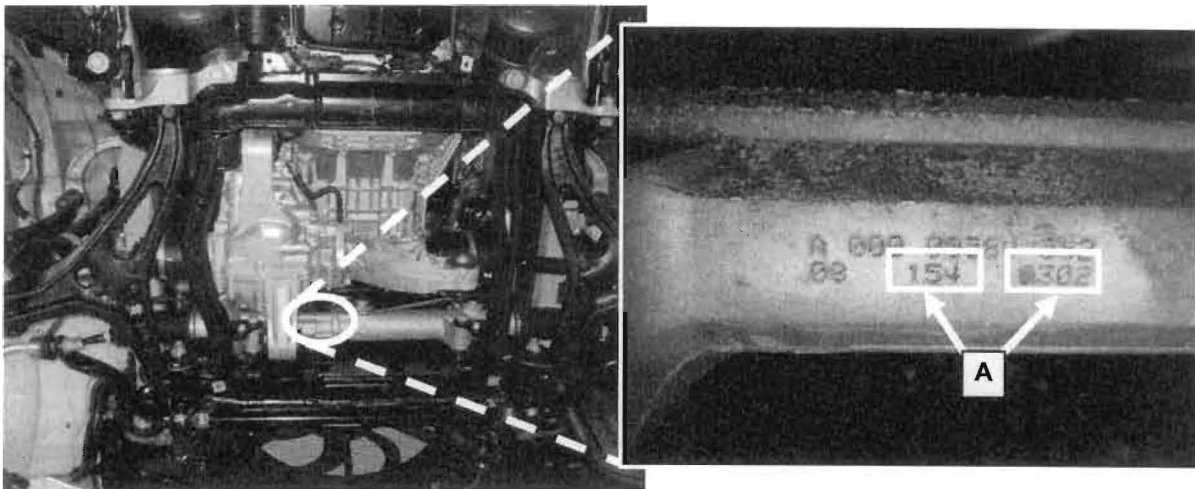


Figure 1

- If date code is **NOT** listed procedure is complete (reassemble in reverse order).
- If date code **IS** listed proceed to **Subject C: Replace Power Steering Rack**.

C. Replace Power Steering Rack

1. Replace power steering rack; refer to WIS for model:
 - 164 /164.8: AR46.20-P-0600GZ.
 - 251: AR46.20-P-0600RT

Note:

Ensure to check and refill front differential gear oil after reinstalling differential.

Note (regarding WIS Instructions AR46.20-P-0600GZ):

Do not remove catalytic converter diesel particulate filter on diesel vehicles.

VIN (4JG...)	
BB86E2 6A 000617	BB86EX 6A 041514
BB86E3 6A 001680	BB86E9 6A 044534
BB86E5 6A 001695	BB86E0 6A 045586
BB86E9 6A 002090	BB86E7 6A 047657
BB86E9 6A 002364	BB75E8 6A 050241
BB86E8 6A 002372	BB86E0 6A 052537
BB86E7 6A 002444	BB86E8 6A 055248
BB86E0 6A 002995	BB86EX 6A 060984
BB86EX 6A 003927	BB86E5 6A 061430
BB86E7 6A 004016	BB86E6 6A 063560
BB86E7 6A 004100	BB86E3 6A 066125
BB86EX 6A 004351	BB86E9 6A 067778
BB86E0 6A 004651	BB86E1 6A 071145
BB86E2 6A 005834	BB86E4 6A 072824
BB86E3 6A 005972	BB86EX 6A 073640
BB86E5 6A 006184	BB86EX 6A 075128
BB86E6 6A 006226	BB86E9 6A 076402
BB86E8 6A 006695	BB86E8 6A 076990
BB86E4 6A 006726	BB86E3 6A 077433
BB86E2 6A 007275	BB86E3 6A 077884
BB86E2 6A 008085	BB86E9 6A 077985
BB86E8 6A 008429	BB86E9 6A 078344
BB86E4 6A 009142	BB86E2 6A 079139
BB86E4 6A 010629	BB86E7 6A 079671
BB86E6 6A 010678	BB86E3 6A 080669
BB86E2 6A 011181	BB86E6 6A 087504
BB86E4 6A 011196	BB86E4 6A 093561
BB86E7 6A 012665	BB86E7 6A 094350
BB86EX 6A 014748	BB86E7 6A 095921
BB86E5 6A 015239	BB86E5 6A 097554
BB86E1 6A 019014	BB86E8 6A 097628
BB86E6 6A 019199	BB86E9 6A 097685
BB86E5 6A 019548	BB86E1 6A 100823
BB86E1 6A 020244	BB86E1 6A 101616
BB86E4 6A 020352	BB86E6 6A 101899
BB86E1 6A 020972	BB86E7 6A 102141
BB86E8 6A 023027	BB86E1 6A 102958
BB86E4 6A 023235	BB86E8 6A 105940
BB86EX 6A 024163	BB86E2 6A 106761
BB86E7 6A 024184	BB86E9 6A 106952
BB86E2 6A 026439	BF71E6 7A 107046
BB86E0 6A 026777	BB86E3 6A 108325
BB86EX 6A 031209	BB86EX 6A 108371
BB86E0 6A 032384	BB86E5 6A 108679
BB86E3 6A 032668	BB86E8 6A 109728
BB86E3 6A 033495	BB86E2 6A 110230
BB86E4 6A 034395	BB86E0 6A 111554
BB86E6 6A 037430	BB86E6 6A 112451
BB86E8 6A 038045	BB86E1 6A 113961
BB86E1 6A 041109	BB86E8 6A 119045

VIN (4JG...)	
BB86E9 6A 119636	BF71E3 8A 314849
BB86E0 6A 130475	BF86E8 8A 315056
BB86EX 6A 130760	BF71E0 8A 315702
BB86E1 6A 132140	BF71E5 8A 317929
BB86E4 6A 132164	BF86E7 8A 317932
BB86E4 6A 132195	BF71EX 8A 319644
BB86E6 6A 132487	BF86E4 8A 320450
BB86E1 6A 146944	BF71E6 8A 321875
BB22E3 7A 166178	BB72E2 8A 323388
BB22E1 7A 172481	BF22EX 8A 323792
BB22E0 7A 185951	BB72E6 8A 325208
BB86E5 7A 199664	BF71E9 8A 325631
BB22E6 7A 208892	BB86E3 8A 326333
BB86E1 7A 216959	BF71E0 8A 326845
BB86E9 7A 232777	BF86E5 8A 328881
BB22E7 7A 234210	BF71E2 8A 329682
BB86E5 7A 236471	BF71E8 8A 330304
BB22E7 7A 239536	BF71E5 8A 330504
BB86E3 7A 244231	BF86E8 8A 330964
BB86E7 7A 246581	BF71E7 8A 331301
BB86E5 7A 247535	BF86E5 8A 331375
BB22E3 7A 247780	BF86EX 8A 331579
BB86E3 7A 252992	BF71E1 8A 331584
BB22E2 7A 266255	BB86E8 8A 332919
BB86E0 7A 272035	BF86E8 8A 333394
BB22E8 7A 272920	BF86E5 8A 334602
BB22E7 7A 281687	BB72E4 8A 334845
BB86E0 7A 287117	BF71E7 8A 336224
BB22E3 8A 298617	BF71E7 8A 337034
BB86E8 8A 298979	BF71E8 8A 339360
BB86E5 8A 299507	BF71E0 8A 339787
BB86E9 8A 300318	BB86E9 8A 340544
BB86E8 8A 301962	BF71E6 8A 346968
BB86E1 8A 302113	BB86E0 8A 346989
BF71E1 8A 307205	BF71E9 8A 349735
BB86E0 8A 307982	BB86E8 8A 351289
BB86E1 8A 308512	BB86E0 8A 351870
BB22E9 8A 308891	BB86E6 8A 353879
BF71EX 8A 309230	BB86EX 8A 355053
BF86E4 8A 309285	BB86E3 8A 356836
BB86E5 8A 310229	BB86E5 8A 358684
BB86E2 8A 310558	BF86E9 8A 359180
BF86E5 8A 310669	BF71E9 8A 359326
BB86E9 8A 311318	BF71E6 8A 361468
BB86E8 8A 311777	BB86E3 8A 361857
BB86E8 8A 312069	BF71E4 8A 362859
BB86E3 8A 312805	BF71E3 8A 363808
BF71E3 8A 312843	BB86E3 8A 367397
BB86E8 8A 313674	BB86E3 8A 367822
BB72E2 8A 314254	BB22E3 8A 376846

Primary Parts Information

Qty.	Part Name	Part Number (model 251)	Part Number (model 164)	Estimated Replacement Rate
1	Power steering rack	A251 460 07 00	A164 460 05 00	100%
1.2L	Power steering fluid	BQ 1 46 0001	BQ 1 46 0001	
1	Bolt, power steering coupling	N000000 004347	N000000 004347	
2	Nut, tie rod end	A002 990 70 50	A002 990 70 50	
2	Nut, shock absorber	N000000 005275	N000000 003343	
6	Bolt, driveshaft	N000000 004138	N000000 004138	
2	Collar nut, securing axle shaft	A001 990 91 54	A001 990 91 54	
2	Nut, upper control arm	A002 990 09 54	A002 990 09 54	
1	Nut, front differential	N913023 010002	N913023 010002	
2	Nut, power steering rack to carrier			
2	O-ring	A015 997 22 45	A015 997 22 45	
1L	Differential oil	A001 989 33 03 10	A001 989 33 03 10	

Note:

- Please be aware that only the part number(s) referenced in the Campaign Bulletin is approved for use to repair the vehicle. Repairs performed using any other part(s) will not have been performed in accordance with the campaign. Accordingly, warranty claims submitted with reference to an improper part number(s) will be denied.
- The following allowable labor operation should be used when submitting a warranty claim for this repair:

Warranty Information**Repair 1**

Operation: Check vehicle's VIN (02-6281)
Check date code of power steering rack (02-6282)

Additional labor time for vehicles with off road package only:
Remove off road package covers (02-6284)

Damage Code	Operation Number	Labor Time (hrs.)	Model Indicator(s)
46 940 34 8	02-6281	0.1	BA, BD, BE, BF, EA, EB, EC, Z1, Z4, Z5,
	02-6282	0.3	
	02-6284	0.3	

Repair 2

Operation: Check Vehicle's VIN (02-6281)
Check date code of power steering rack (02-6282)
Replace power steering rack (02-6283)

Additional labor time for vehicles with off road package only:
Remove off road package covers (02-6284)

Damage Code	Operation Number	Labor Time (hrs.)	Model Indicator(s)
46 940 34 7	02-6281	0.1	BA, BD, BE, BF, EA, EB, EC, Z1, Z4, Z5
	02-6282	0.3	
	02-6283	4.9	
	02-6284	0.3	

Repair 3

Operation: Check Vehicle's VIN (02-6281)
Replace power steering rack (02-6283)

Additional labor time for vehicles with off road package only:
Remove off road package covers (02-6284)

Damage Code	Operation Number	Labor Time (hrs.)	Model Indicator(s)
46 940 34 7	02-6281	0.1	BA, BD, BE, BF, EA, EB, EC, Z1, Z4, Z5
	02-6283	4.9	
	02-6284	0.3	

Note:

Return old power steering racks to the Quality Evaluation Center (QEC).



Mercedes-Benz

Mercedes-Benz USA, LLC

Alan J. McLaren
Vice President
Customer Services

Safety Recall #2008-120011

January, 2009

Dear Mercedes-Benz Owner,

This notice is sent to you in accordance with the requirements of the National Traffic and Motor Vehicle Safety Act.

Daimler AG (DAG), the manufacturer of Mercedes-Benz vehicles, has decided that a defect which relates to motor vehicle safety exists in certain Model Year 2008 ML, GL, and R-Class vehicles with regard to the power steering rack. Mercedes-Benz USA, LLC (MBUSA) therefore has initiated a recall of these vehicles. Our records indicate that your vehicle is included in the affected population of vehicles.

WE SENT YOU THIS NOTICE BECAUSE WE ARE CONCERNED ABOUT YOUR SAFETY.

Daimler AG (DAG) has determined a defect may exist in the driving pin used to control the oil pressure of the power steering. This defect resulted from a manufacturing process flaw at the supplier. If a defective driving pin exists in a vehicle and the pin breaks during normal vehicle turning, the normally available hydraulic support function will no longer function and steering wheel operation will be limited which may lead to a vehicle crash.

Your authorized Mercedes-Benz dealer can check and replace, if necessary, the power steering rack in all potentially affected vehicles. This service will be provided free of charge. The working time required is approximately 6 hours. As a matter of normal service process, your authorized Mercedes-Benz dealer will also check for other repair measures which might be applicable to your vehicle and this may increase the required working time. Please contact your authorized Mercedes-Benz dealer for additional information and to schedule an appointment at your earliest convenience. Please mention Recall Campaign #2008-120011.

If you are no longer the vehicle owner, or have a change of address, please complete the reverse side of this letter and return the complete letter in the enclosed envelope. If this is a leased vehicle and the lessor and registered owner receive this notice, please forward this information by first class mail to the lessee. If you have paid to have this recall condition corrected prior to this notice you may be eligible to receive reimbursement. Please see the reverse side of this notice for details.

Please contact your authorized Mercedes-Benz dealer should you have any questions or encounter any difficulty regarding this recall. If your dealer is unable to remedy your situation please contact us at 1-(800) FOR-MERCEdes (1-800-367-6372).

If an authorized Mercedes-Benz dealer or Mercedes-Benz USA, LLC, fails or is unable to perform this service without charge within 60 days, pursuant to law 49 U.S.C. Chapter 301, you may submit a complaint to the Administrator, National Highway Traffic Safety Administration, 1200 New Jersey Avenue, S.E., Washington, D.C. 20590 or call the toll-free Auto Safety Hotline at 1-888-327-4236 (TTY 1-800-424-9153); or go to <http://www.safercar.gov>.

We apologize for any inconvenience this situation may cause you.

Sincerely,

Mercedes-Benz USA, LLC
One Mercedes Drive
P.O. Box 350
Montvale, NJ 07645-0350
Phone 1- 800-FOR- MERCEdes (1-800 367-6372)
Fax (201) 476-6211
www.MBUSA.com