



YAMAHA MOTOR CORPORATION, USA
6555 KATELLA AVENUE, CYPRESS, CALIFORNIA 90630-5101 714/761-7300

October 3, 2008

VIA FACSIMILE (202) 366-7882, Attn: Recall Management Division
ALSO VIA FIRST CLASS MAIL

Recall Management Division
NHTSA/Enforcement/ODI, NVS-215
1200 New Jersey Avenue, SE
W46-425
Washington, DC 20590

Regarding: 08V-461

Dear Sir/Madam,

First, we thank the Agency for their review and approval of our proposed owner's notification. Enclosed please find hard copies of the Technical Bulletin issued to our dealers as well as the approved owner's letter. All Yamaha motorcycle and scooter dealers will receive this Technical Bulletin. To facilitate repairs, dealers invoiced affected products under this recall receive an additional Bulletin with a print-out of the affected VIN's for the units they have received. The mailing of both the dealer Bulletin and owner's letter was completed approximately on 10-2-08, so your assumption is correct as to the timing of our quarterly reports.

The determination date for this campaign was 9-2-08. The starting production period for the vehicles was December 2006 – April 2007 for the XF50, and June, 2006 – April 2007 for the XC50. As this campaign is international in scope we could only provide in our initial report an estimate of affected vehicles in the U.S. We are now obviously in a position to provide the accurate range. The Technical Bulletin provides the final VIN ranges by model with a combined total of 4,840 vehicles in the U.S. (3,000 XF50's and 1,840 XC50's). For TREAD purposes obviously it goes without saying similar campaigns are being conducted in other jurisdictions.

In the event I can provide further information or answer any questions please do not hesitate to contact the undersigned.

Sincerely,

Brad Franklin
Department Manager
Government Relations

BF/lmf

Enclosures: Technical Bulletin
Owners Letter

Technical BULLETIN

©2008 YAMAHA MOTOR CORPORATION, U.S.A.

RECALL

This modification has top priority. This bulletin must be performed immediately to ensure customer safety.

2007 XC50W (Vino Classic); 2007 XF50W (C³) Scooters FACTORY MODIFICATION CAMPAIGN – Connecting Rod

i

INTRODUCTION

Yamaha Motor Corporation, U.S.A., has decided that a defect which relates to motor vehicle safety exists in certain 2007 XC50W ("Vino Classic") and XF50W ("C³") scooters. In affected scooters, the connecting rod in the engine could crack or break because of improper heat treatment on the metal. If the connecting rod breaks, the engine would immediately stop running. If the engine stops while scooter is being ridden, there could be an accident resulting in injury or death.

To correct this defect, Yamaha is initiating a Factory Modification Campaign. Affected scooters must have the engine disassembled and the crankshaft assembly replaced with one that has a properly heat-treated connecting rod.

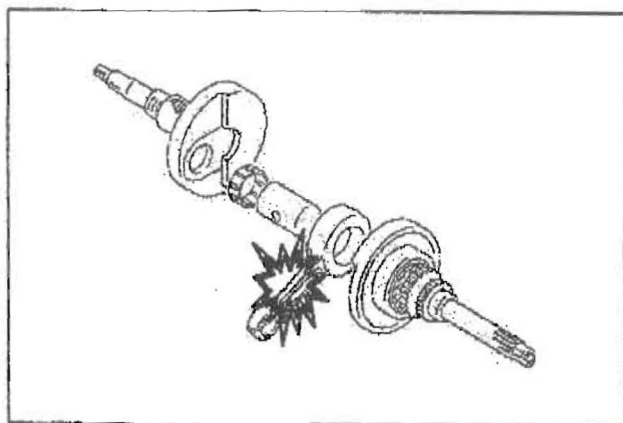
Yamaha is notifying all registered owners of affected scooters by mail. A copy of this letter is included in this bulletin. The customer should take the letter along with the affected scooter to an authorized Yamaha dealer for the modification.

A computer report listing all affected scooters invoiced to your dealership is included with this bulletin. Use the list to help ensure all scooters are modified. All sold scooters that have been registered with Yamaha will show the customer's name and address. Your dealership must notify the owner of any affected scooter that was actually sold but is listed as "unsold" in the report.

You must modify all affected scooters in your inventory as well as all customer-owned scooters brought to you for this service. Any affected scooter that you purchase from Yamaha in the future will also require modification. If you purchase a scooter from another dealer, check to see if the procedures in this bulletin have already been performed before you sell the scooter.

Scooters that are affected should not be operated until they are modified. It is a violation of Yamaha policy for your dealership to deliver any affected scooters to customers until the procedures in this bulletin are performed.

When the modification on each scooter is performed, follow the Warranty Information section of this bulletin to receive reimbursement. Be sure to use the Factory Modification Campaign procedures in Chapter 8 of the **Warranty and Y.E.S. Handbook** (LIT-11790-00-05).





DEALER ACTION SUMMARY

Modify: All units in the affected range. Before modifying a unit, check for a punch mark on the VIN as shown in the Identification Procedure section of this bulletin which indicates that the required modification has already been performed.

Parts

Required: Yes, order one XC/XF Crank Kit per unit.

Warranty: Factory Modification Campaign.

Notify

Customers: Yes. You must immediately contact any customer whose scooter shows as unregistered on the enclosed report. Yamaha has sent letters to customers whose scooters were registered for warranty as of 9/25/08.



AFFECTED RANGE

2007 XC50W	SA30A-131071~132936
2007 XF50W	SA33A-100101~103118



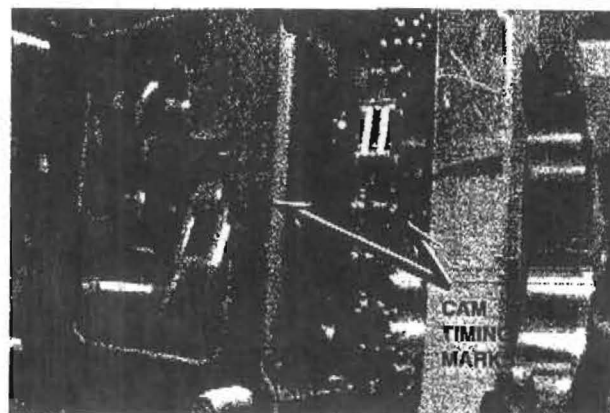
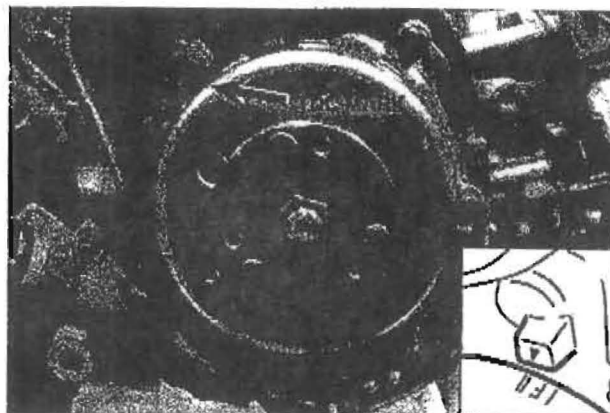
SERVICE PROCEDURES

Refer to the service manual and the following tips.

XC50: LIT-11616-19-49

XF50: LIT-11616-20-58

1. Remove the body panels and then remove the chassis from the engine assembly. (The engine assembly will remain on the centerstand with the rear wheel.)
2. Before disassembling any other engine components, remove the valve cover and right side engine cover to access the cam timing marks.

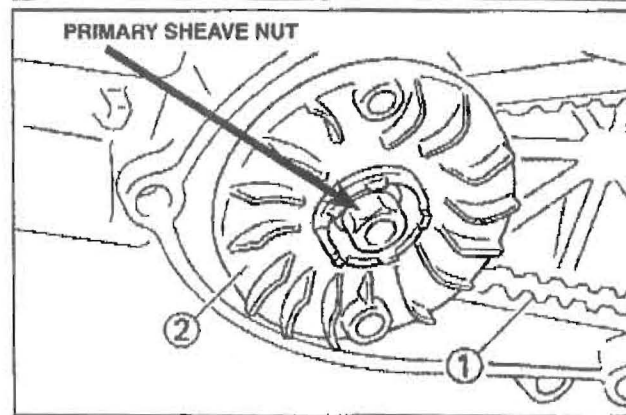
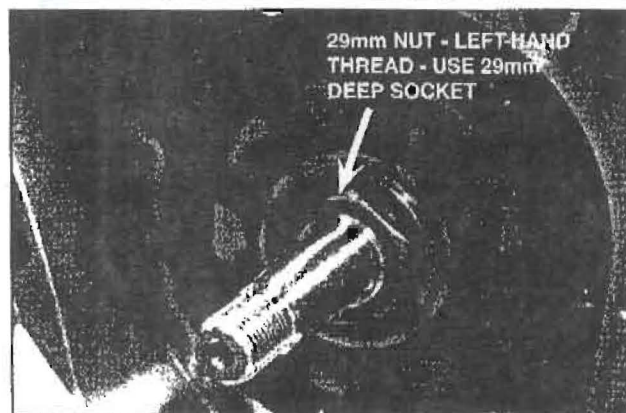
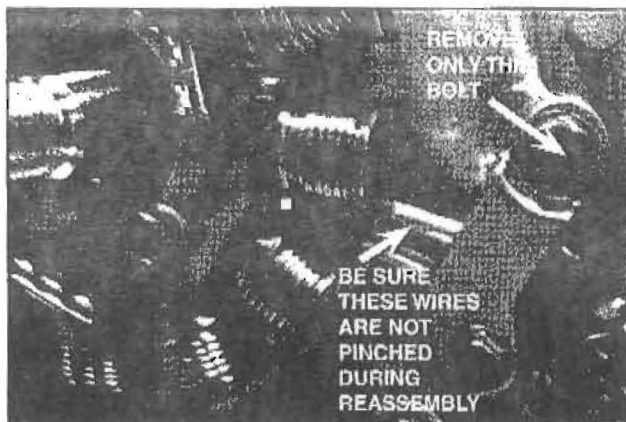


- Remove the flywheel and starter clutch cover to access the 29mm nut for the starter gear.

NOTE: Only remove the upper bolt of the stator wire holder on the cover. When reassembling, be sure that the stator wires are not pinched under the holder.

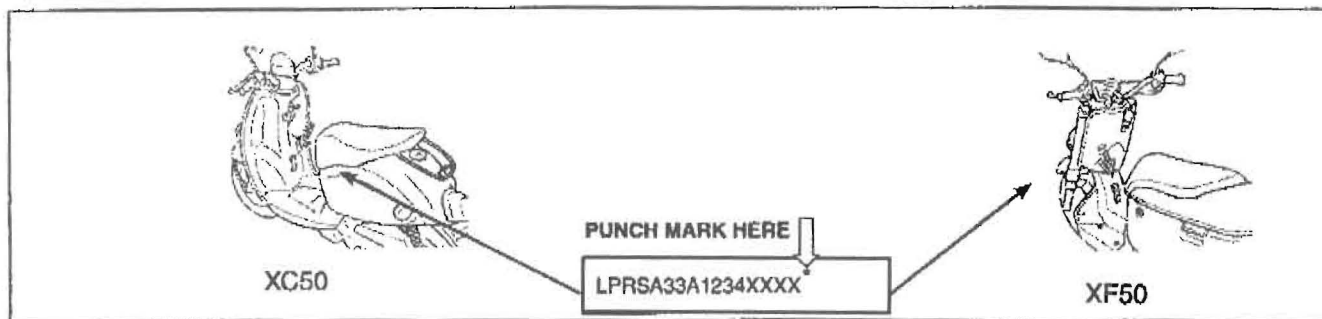
- Remove the 29mm nut – **left-hand thread** – before removing the cylinder or the primary sheave so you can hold the crankshaft while removing the nut.

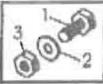
- To remove the belt ①, it is only necessary to remove the Primary Sheave Nut. Then, remove the outer sheave belt ②, and inner sheave. **Do not remove the secondary clutch, rear wheel, or transmission.**
- Tag and hold the replaced crankshaft assembly for 90 days after you submit your Recall Reimbursement Request.



IDENTIFICATION PROCEDURE

When the modification is complete, put a punch mark next to the Primary ID as shown. Check for this punch mark if you encounter an unfamiliar unit. You can also check unit status on YDS or by contacting your Regional Technical Advisor.

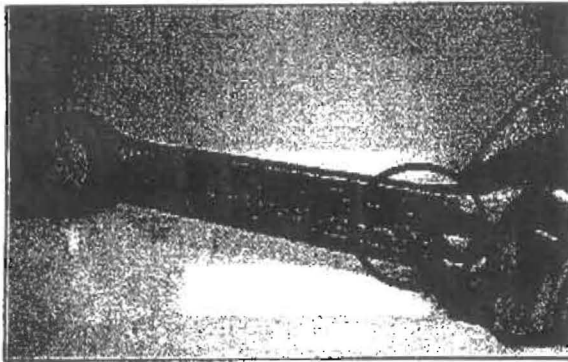




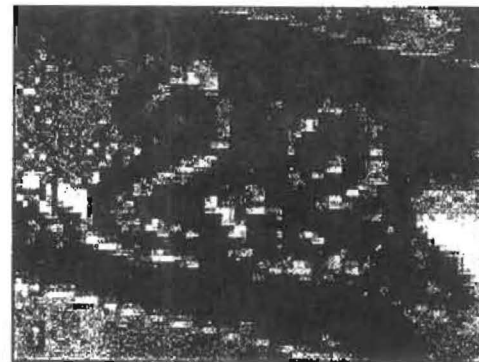
PARTS INFORMATION

Part Number	Description	Dealer Cost
90891-10173-00	XC/XF Crank Kit Kit Contents (shown for reference only – included in kit): For XC/XF50 5ST-E1400-10-00 Crank Assy 5ST-E5453-10-00 Gasket, 1 93102-19804-00 Oil seal 93450-10823-00 Circlip (2 pcs) 5ST-E1351-10-00 Cylinder gasket 1 5ST-E1181-10-00 Cylinder head gasket 5ST-E2435-10-00 Gasket 1P4-E4613-00-00 Gasket, Ext 1 93211-18800-00 O-ring 90280-03045-00 Woodruff key 4DH-E2213-01-00 Tensioner case gasket 90430-06166-00 Gasket (4 pcs) 93210-22803-00 O-ring (2 pcs) 93102-17807-00 Oil seal 90430-08119-00 Gasket 93210-35879-00 O-ring For XC50 9560L-10200-00 U-nut 90185-14814-00 Self-locking nut 93306-205YU-00 Bearing 99001-08600-00 Circlip 5ST-E5451-00-00 Crankcase cover gasket For XF50 90185-14124-00 Self-locking nut 90185-10801-00 Self-locking nut 93306-205XP-00 Bearing 99002-08600-00 Circlip 3B3-E5451-00-00 Crankcase cover gasket	\$78.44

To identify a crankshaft assembly with an improperly treated connecting rod, look at the casting lot number:



➔
CASTING
LOT
NUMBER



Model	Incorrect connecting Rods	Correct Connecting Rods
XC50W	12 and 13	Other numbers
XF50W	07, 08, 09, 10, 11, 12, and 13	Other numbers



YAMAHA MOTOR CORPORATION, U.S.A.
6555 KATELLA AVENUE, CYPRESS, CALIFORNIA 90630-5101 800-962-7926

SAFETY RECALL NOTICE

September 26, 2008

Dear Yamaha Owner:

This notice is sent to you in accordance with the requirements of the National Traffic and Motor Vehicle Safety Act. Yamaha Motor Corporation, U.S.A., has decided that a defect which relates to motor vehicle safety exists in certain 2007 XC50W ("Vino Classic") and XF50W ("C") scooters. Our records show that you own the affected scooter shown above.

The reason for this recall: In affected scooters, the connecting rod in the engine could crack or break because of improper heat treatment on the metal. If the connecting rod breaks, the engine would immediately stop running. If the engine stops while scooter is being ridden, there could be an accident resulting in injury or death.

What Yamaha and your dealer will do: To correct this defect, affected scooters must have the engine disassembled and the crankshaft assembly replaced with one that has a properly heat-treated connecting rod. **There will be no charge to you for this procedure.** Replacing the crankshaft takes a little over 3-1/2 hours to do, but your dealer may need to keep your scooter longer depending upon their schedule.

What you should do now: Please call your Yamaha dealer to make a service appointment to have this procedure performed. Remember to take this letter with you when you take in your scooter.

You should not ride your scooter until this modification is performed.

If you are unable to return to the Yamaha dealer who sold you the scooter, this service will be performed by any authorized Yamaha Scooter dealer. For the name of a dealer near you, call 1-800-88-YAMAHA or visit the Yamaha web site at: www.yamaha-motor.com.

Federal regulations require that any vehicle lessor receiving this recall notice must forward a copy of this notice to the lessee within 10 days.

If you need help: If, after contacting your dealership, you have questions or concerns which the dealership is unable to answer, please write to:

Yamaha Motor Corporation, U.S.A.
Customer Relations Department
P.O. Box 6555
Cypress CA 90630
or call 1-800-962-7926.

If, after contacting Yamaha Customer Relations, you are still not satisfied that we have done our best to remedy the situation without charge and within a reasonable time, you may submit a written complaint to the Administrator, National Highway Traffic Safety Administration, 1200 New Jersey Avenue, SE, Washington, DC 20590; or call the Auto Safety Hotline at 1-888-327-4236 (TTY: 1-800-424-9153); or go to <http://www.safercar.gov>.

If you no longer own this Yamaha: If you have sold your scooter to another party, please call us toll-free at 1-800-962-7926 with the name and address of the new owner, along with the serial number shown above your name on the address label above.

We're sorry to cause you any inconvenience, but we are sincerely concerned about your safety and continued satisfaction with our products. Thank you for giving your attention to this important matter.

Sincerely,

Customer Support Group
Yamaha Motor Corporation, U.S.A.