

Dealer Operation/ General Manager	Sales- Motorcycles	Sales - Used Motorcycles	Business Manager (F&I)	Service	Parts & Accessories	Administration
Date: 03/2008 Bulletin #: 16 001 08 (014)		Source: SI No. 9/2008 BMW Motorrad USA Service and Technical			recall number updated June 2008	



# BMW Motorrad USA

## Service Information Bulletin

### \*\*Notice of Recall 08V-241\*\*

**Subject:** Change to routing of fuel-tank breather

**Model:** F 800 S / ST (K71)

**Details:** If the fuel-tank breather hose of the K71 is trapped by neighboring components, pressure equalization inside the fuel tank is possible only to a limited extent. (Fig.1: No. 12) At high ambient temperatures, the consequence can be deformation of the fuel tank where it is shaped to provide clearance for the rear wheel. (Bulging)

On account of the installed position of the fuel tank in the rear frame underneath the seat, where it is contoured to form part of the wheel arch, severe suspension compression in combination with a high payload can cause the bottom of the tank to rub against the rear wheel.

In a worst-case situation, this can produce a leak in the fuel tank. (Fig. 2)

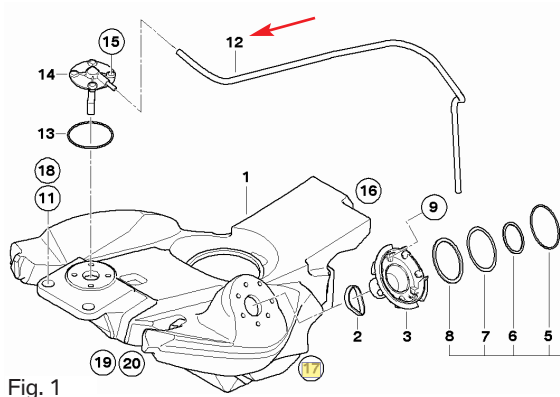


Fig. 1



Fig. 2

**Motorcycles affected:**

	Model	Type	From	To
K71	F800 S	0226	ZP00001	ZP00581
	F800 ST	0244	ZR10000	ZR11422

The VIN ranges listed above are only for informational purposes and are not to be considered a deciding factor. In order to determine if a specific motorcycle is affected by this Recall Campaign, it will be necessary to verify all motorcycle VINs through a DCS Vehicle History Check. Based on the response of the system, either proceed with the repair or take no further action.

**Production Solution:** Optimized routing of the fuel-tank breather hose has already been implemented in series production.

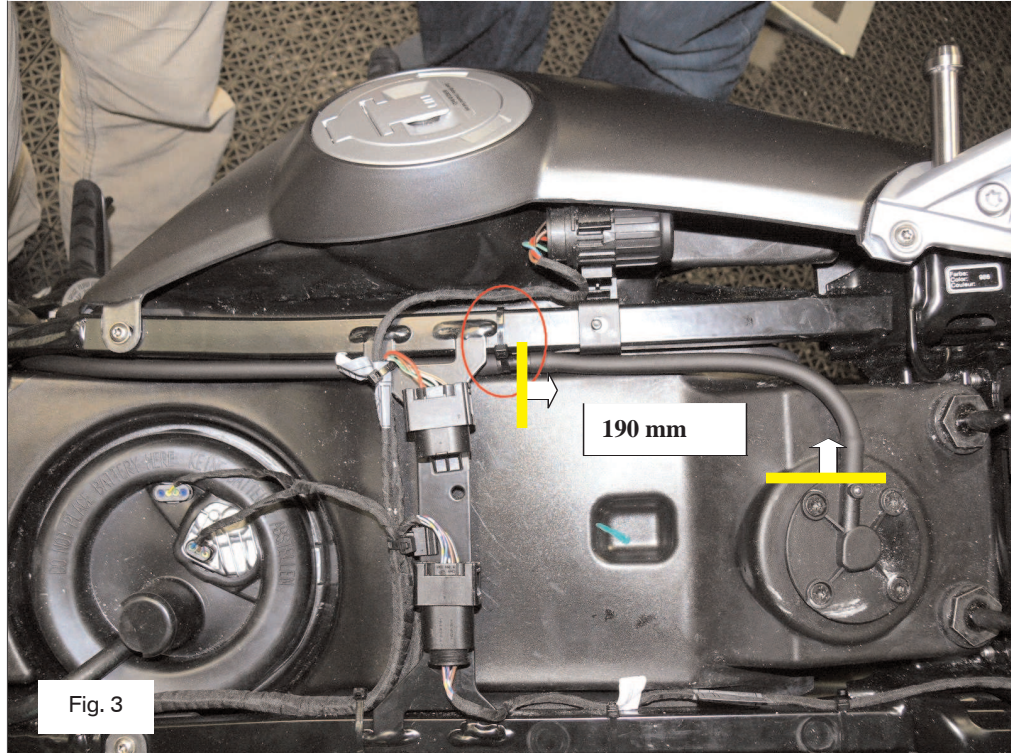
**Aftersales Solution:** Please be sure to proceed in accordance with the instructions below before handing the motorcycle over to the customer.

**1. Optimized routing of the fuel-tank breather hose, motorcycles without anti-theft alarm as optional extra:**

Cut through fuel-tank breather hose 16 13 7 678 769 at 190mm and insert connector 61 66 1 382 908 between the two lengths of hose.

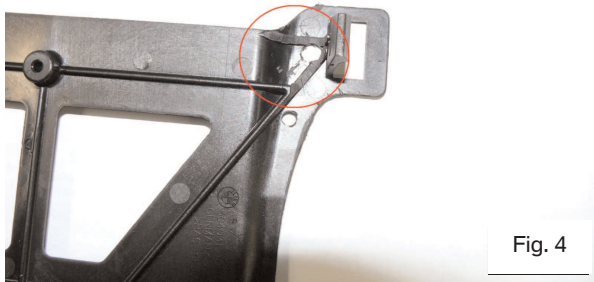
Use a cable tie to secure the connector to the rear frame, positioning the cable tie directly at the cross-member of the rear frame (between the bracket for the diagnosis plug and the cross-member).

Correctly installed, the connector faces in. Make sure the cable tie is positioned with its locking element turned away from the tank side. (Fig. 3)

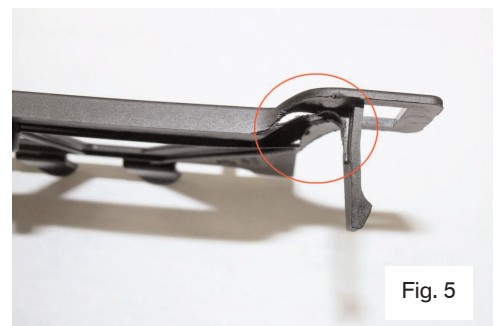


**2. Optimized routing of the fuel-tank breather hose, motorcycles with anti-theft alarm as optional extra:**

Modify the ribs on the anti-theft alarm bracket as shown in Figs. 4 and 5 in such a way that the fuel-tank breather hose can no longer be squeezed. Route the hose as described in 1. above.



View of the anti-theft alarm bracket from below



View of the anti-theft alarm bracket from behind

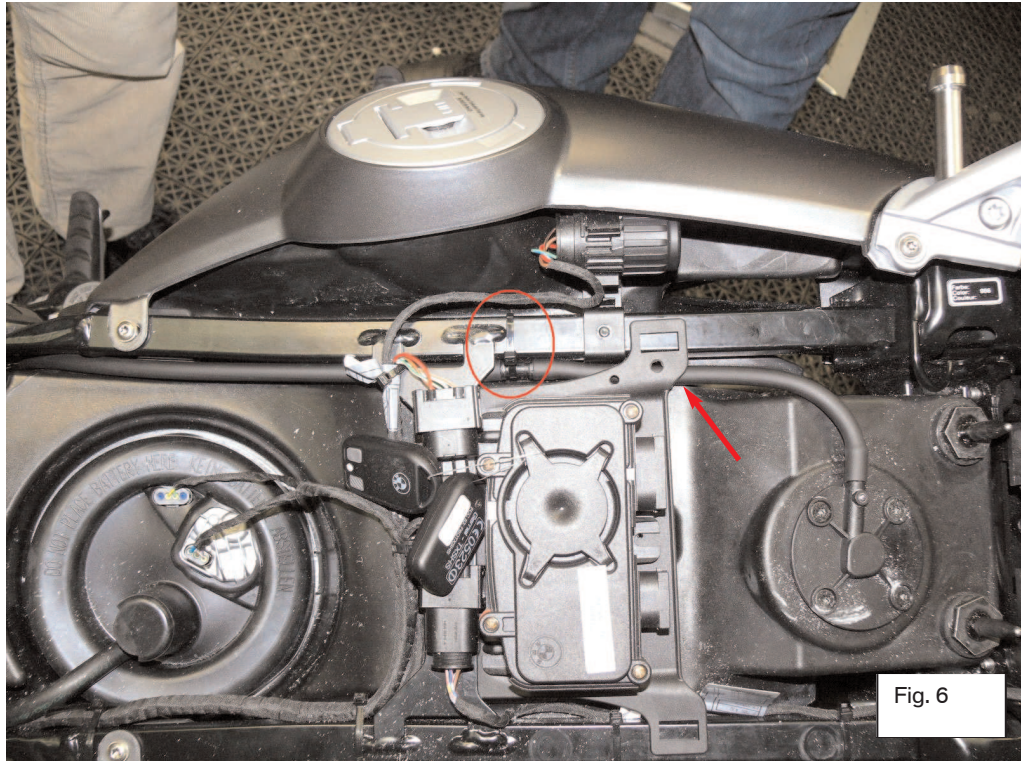


Fig. 6

Routing, models with anti-theft alarm and modified anti-theft alarm bracket

**NHTSA Statement:** Under the National Traffic and Motor Vehicle Safety Act of 1966, as amended, if there has been a recall campaign, dealers must assure that all new vehicles and new items of replacement equipment are free of safety defects and comply with all applicable Federal Motor Vehicle Safety Standards at the time of delivery to the consumer. This means that dealers may not deliver new motor vehicles or new items of replacement equipment to consumers unless the safety defect or noncompliance has been remedied before delivery.

**Warranty:** The repair described in this bulletin is covered under the BMW New Motorcycle Limited Warranty regardless of time or mileage. Reimbursement for this Technical Campaign will be via normal claim entry utilizing the following information:

<b>Warranty Information:</b>	Defect code:	00 00 16 35 00	Re-routing of fuel-tank breather line
	FRU code:	00 60 170	Conversion fuel-tank breather hose 5 FRUs
	Part No.:	61 66 1 382 908	Connector

**Contact:** Service and Technical Manager