



Recall Information Bulletin

No: C1003510 **Issued:** 8/1/2008
NHTSA No: 08V-221
Transport Canada No: 08-171
Re: Rear Engine Support
Group: 32 **Models:** FE

SUBJECT:

Safety Recall C1003510 - Rear Engine Support

MODELS:

FE639 and FE649 equipped with an AISIN automatic transmission.

VEHICLES INVOLVED:

Certain 1999-2004 model year FE639 and FE649 vehicles produced from February 27, 1998 through January 5, 2004.

A list of vehicles your Dealership has sold that require this Recall can be found on the Dealer's "Open Campaigns" list supplied by MFTA via Fusonet. Some individual vehicles described above may not need the Recall. Always check the "VIN Inquiry" tab under "Service" or "Warranty" on Fusonet to verify that the VIN requires this Safety Recall.

Important note: It is a violation of Federal law for a dealer to deliver a new or used motor vehicle covered by this Recall Information Bulletin, under a sale or lease, until the Safety Recall has been completed.

OWNER NOTIFICATION:

Owners of affected vehicles will be notified by mail. A copy of the customer notification letter can be found on Fusonet.

CONDITION:

Mitsubishi Fuso Truck of America, Inc. has decided that a defect which relates to motor vehicle safety exists in the rear engine support bracket. On affected vehicles, the rear engine support bracket is composed of materials of insufficient strength. Normal vehicle vibrations may cause the bracket to crack. If the vehicle is continually operated in this condition, the bracket may break apart. In the worst case, the automatic transmission (A/T) could drop out of alignment with the drive train.

MODIFICATION:

Replace the existing rear engine support bracket assembly.

PARTS TO BE REPLACED:

The rear engine support and its attaching hardware will be replaced. The replacement parts kit **EX32** is available through normal parts channels.

RECALL CLAIM SUBMITTAL:

Claim parts and labor via the DIN System using the Recall Claim Entry screen. Enter all requested information, including the Recall Number. The system will apply the labor allowance and parts pricing adjustment shown.

Recall Reimbursement					
Campaign Number	Model	Allowances		Labor Description	Part Numbers
C1003510	FE639, FE649	Labor Time	1.9 hours	Disassembly, rear engine support kit installation, reassembly	EX32
		Parts Pricing	US \$187.68		

RECALL PARTS RETENTION:

All parts that have been removed and replaced must be properly identified and retained, as outlined in the Warranty and Service Policy Manual, section 3.8. The Product Support Manager will authorize their scrapping.

REPAIR PROCEDURE (FE Models):

1. Park the vehicle on a flat, level surface, shut off the engine, place the A/T shifter into the PARK position, apply the parking brake, chock the wheels and disconnect the battery cables. **CAUTION! Do not remove the wheel chocks until all modification work has been completed!**

EX32 Parts Kit Contents		
Item #	Part Name	Qty.
1	Left-hand rear engine mounting bracket	1
2	Right-hand rear engine mounting bracket	1
3	Rear engine support assembly	1
4	Rubber cushion	2
5	Transmission mounting bracket	1
6	Flange nut (10)	4
7	Flange nut (14)	4
8	Flange bolt (14x30)	4
9	Flange nut (10)	8
10	Flange bolt (10x25)	8
11	Flange bolt (12x25)	6
12	O-ring	1

2. Assemble items 1 through 8 of parts kit EX32 into one assembly, as shown in PHOTOS 1 and 2 below.

PHOTO 1

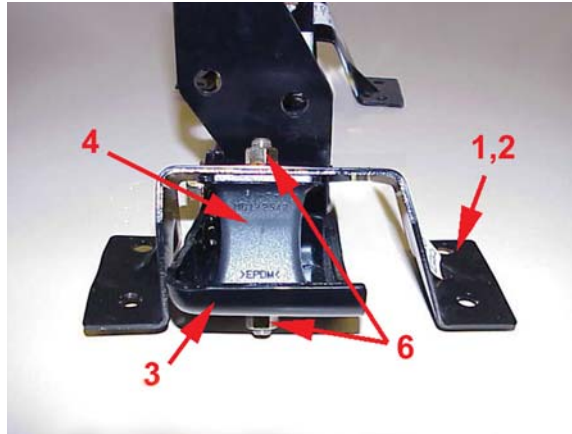
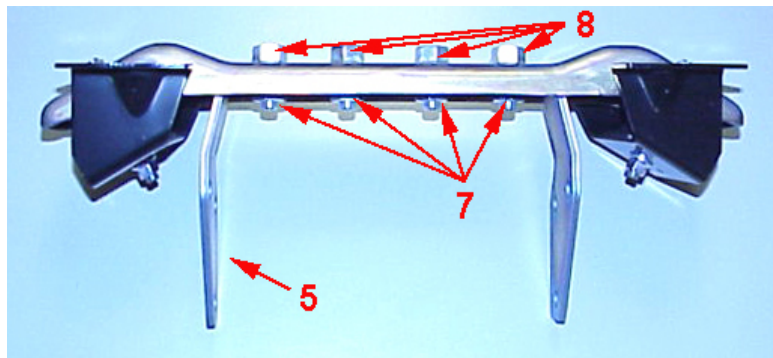


PHOTO 2



3. Torque the hardware to the following specifications:

Torque Specifications		
Item #	Part Name	Torque
6	Flange nut (10)	15.5-22.9 ft.lbs. (21-31 Nm)
7	Flange nut (14)	148-199 ft. lbs. (200-270 Nm)

Removal of rear engine support assembly.

4. Support the A/T assembly with a transmission jack (or similar device). **CAUTION! Support the A/T assembly evenly. Supporting the weight of the assembly unevenly could crush the oil pan.**
5. Remove the engine speed sensor if any specific rear body application presents a clearance problem.
6. Remove the hardware (A) that affixes the left and right hand rear engine mounting brackets (1,2) to the cross member (See PHOTO 3).
7. Remove the flange bolts (11) that affix the transmission mounting bracket (5) to the sides of the A/T assembly (See PHOTO 4). Ensure that the previously unused bolt hole (at A, PHOTO 4) is clear of debris before installing the new bolt.
8. Using the transmission jack (or similar device), lower the A/T assembly to provide adequate clearance for removal of the rear engine support assembly.
9. Remove the old rear engine support assembly.

PHOTO 3

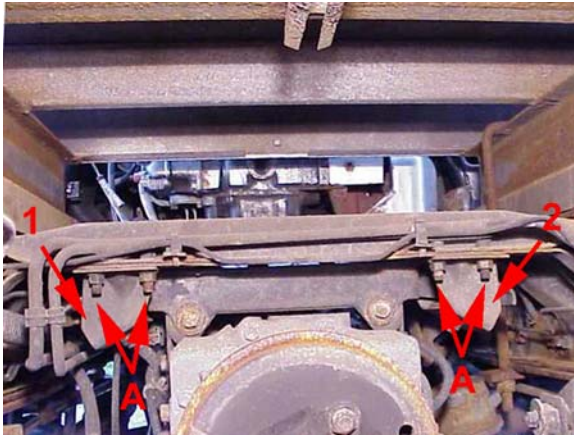
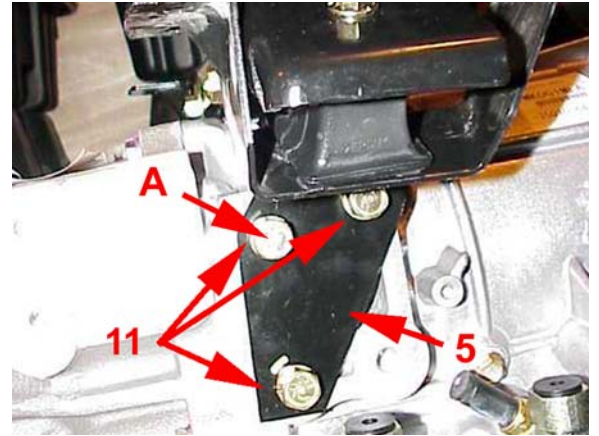


PHOTO 4



Installation of the new rear engine support assembly.

10. With the A/T assembly in the lowered position, affix the new rear engine support assembly to the sides of the transmission (See PHOTO 4) using six new flange bolts (11). Torque the six flange bolts (11) to 47.9-62.6 ft.lbs. (65-85 Nm).
11. Raise the A/T assembly until the rear engine support assembly (3) rests firmly and evenly against the cross member.
12. Install the affixing bolts (9) and nuts (10). Torque the nuts to 36.9-47.9 ft.lbs (50-65 Nm).
13. If the engine speed sensor was removed during Step 5, reinstall it using a new o-ring (12). Torque the affixing bolt to 5.9 ft.lbs (8.0 Nm).
14. Remove the transmission jack, reconnect the battery cables and remove the wheel chocks.