

Safety Recall

Subject: Front Leaf Spring Hanger Bracket Nut & Bolt Replacement

Date: 9/17/2008

Bulletin: R0023A

Campaign #: A5850

Affected Models: Select 2005-2008 145 (NA6J), 165 (NB6J), 185 (NC6J), 238 (ND8J), 258 (ND8J), 268 (NE8J), 268A (NJ8J), 338 (NV8J)

REVISION: This revision includes the following changes:

1. The removal of the # 1 crossmember to allow the technician to torque the front spring hanger bolt from the top.
2. Installation orientation of the front spring hanger front bolt and nut.
3. Torque application method to both of the front spring hanger brackets front bolts.

Important: Verify on the Hino DCS Warranty System that the vehicle still needs to have this work performed.

Description:

This Safety Recall involves removal and replacement of the front spring hanger bracket bolts.

Condition:

The two vertical front spring bracket attachment bolts on the right and left hand spring brackets could become loose and cause increased stress on the spring brackets. It is possible that the spring brackets could crack under the increased stress and reduce steering responsiveness.

Subject Vehicles:

Certain US production Hino conventional cab truck models 145 (NA6J), 165 (NB6J), 185 (NC6J), 238 (ND8J), 258 (ND8J), 268 (NE8J), 268A (NJ8J), 338 (NV8J) produced between August 2, 2004 and September 27, 2007.

Before You Begin:

Read and understand all instructions and procedures before you begin. Read and observe all Caution and Warning safety alerts that precede these instructions while following these procedures. The alerts help to avoid damage to components, serious personal injury, or both.



Once Recall is completed

Fill out the Recall Completion sticker as shown in the picture to the left. This sticker should be attached to the door jam above the V.I.N. Plate.

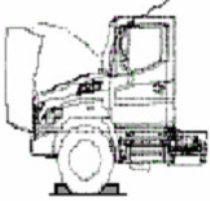
NOTE:

2005 & 2006 V.I.N. Plates are located on the right side.
2007 & 2008 V.I.N. Plates are located on the left side.

Safety Recall

!! WARNING!!

Park the vehicle on a flat and level surface. Block the wheels to prevent the vehicle from moving.

⚠ WARNING	
<ol style="list-style-type: none"> 1. Apply parking brake and wheel chocks to prevent the vehicle from moving 2. Confirm that the engine has cooled down and is at a low temperature to prevent exposure to high temperatures. 3. Use care when opening or closing the hood to prevent injury. 4. Wear protective gloves and safety glasses when replacing inspecting or replacing the turbocharger to avoid injury to hands and eyes. 	

Required Parts:

Part Number	Description	NA6J, NB6J, NC6J	Number Required Per Unit	ND8J, NE8J, NJ8J, NV8J	Number Required Per Unit
SZ10714014	Bolt, Flange, Front Spring Bracket (40mm)	YES	4	NO	0
SZ10714013	Bolt, Flange, Front Spring Bracket (35mm)	NO	0	YES	4
SZ17814006	Nut, Flange	YES	4	YES	4

NOTE:

The following parts will be needed in the event that the #1 crossmember bolts are missing or damaged.

Part Number	Description	NA6J, NB6J, NC6J	Number Required Per Unit	ND8J, NE8J, NJ8J, NV8J	Number Required Per Unit
SZ10714013	Bolt, Flange, #1 Crossmember Bracket (35mm)	YES	4	YES	4
SZ17814006	Nut, Flange	YES	4	YES	4

Required Tools:

Part Number	Tool Name	Qty	Remark
810014*	PRESET TORQUE HANDLE	1	
809236*	19 MM BOX HEAD	1	

*One of each will be supplied to each Dealer / repair location

Procedure:

CAUTION: To prevent personal injury, ask for assistance when lowering the bumper from the vehicle.

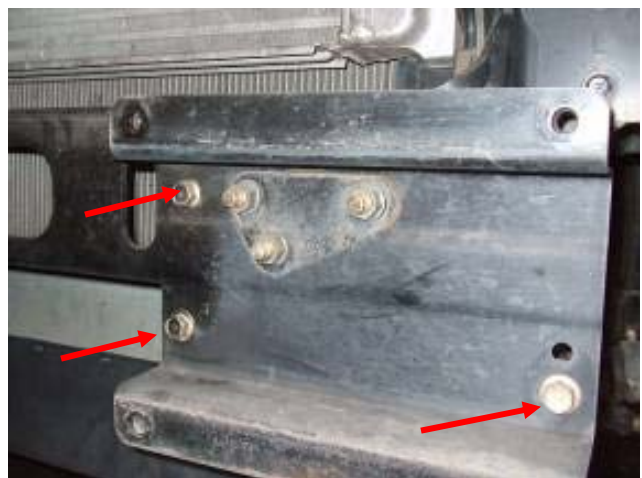
1. Remove front bumper (six bolts).



2. If the vehicle is equipped with the extended bumper option, remove right and left bumper extension brackets. Four bolts per bracket.

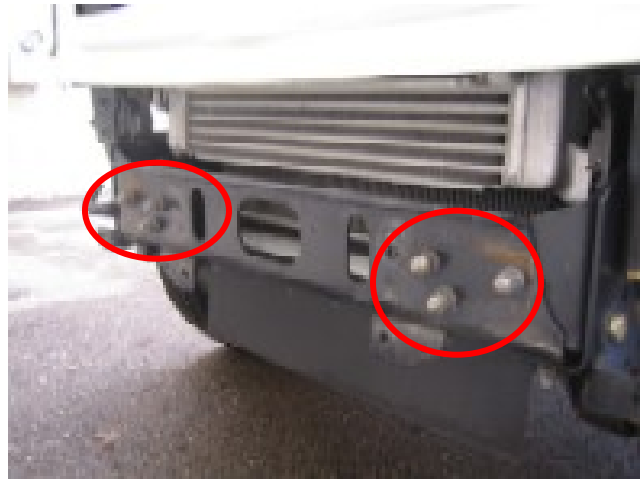


3. Remove right and left bumper stay. Three bolts per stay.



4. Remove the six nuts and bolts from the front side of the #1 crossmember.

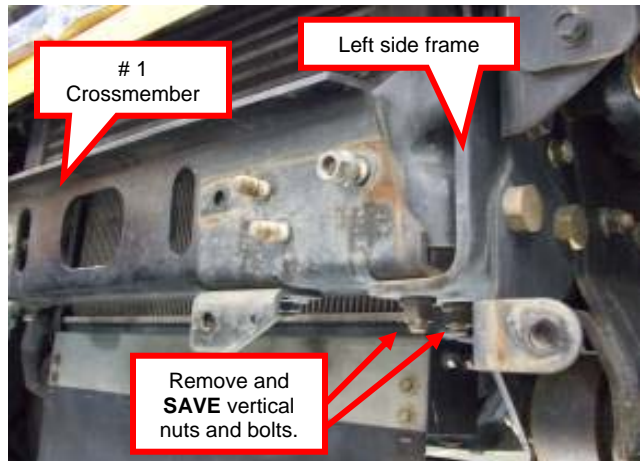
Save the nuts and bolts for reuse later.



5. Remove and save the four vertical nuts and bolts (2 each / side) on the underside of the #1 crossmember.

If any bolts or nuts are missing, replace with flange bolt SZ10714013 and flange nut SZ17814006 in step 22.

Remove the #1 crossmember from the vehicle.



NOTE: It is mandatory that these bolts be removed at this point in the procedure.

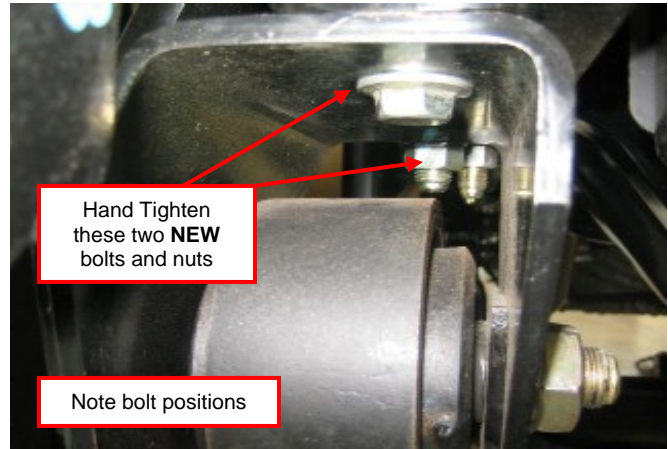
6. On the right side of the vehicle, remove and discard both lower bolts and nuts for spring hanger bracket.



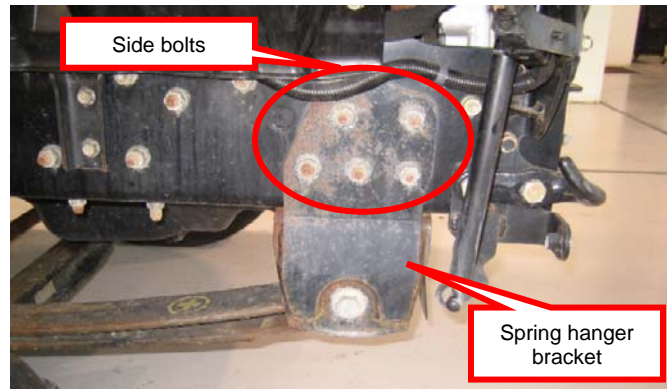
Safety Recall

7. Install two **NEW** bolts and nuts, **HAND TIGHTEN ONLY.**

NOTE: The front bolt must be installed with the bolt head contacting the spring hanger bracket. The rear bolt must be installed with the nut contacting the spring hanger bracket.



8. Still working on the right side of the vehicle, loosen the side bolts that secure the spring hanger bracket to the frame rail.
(number of bolts varies by model)

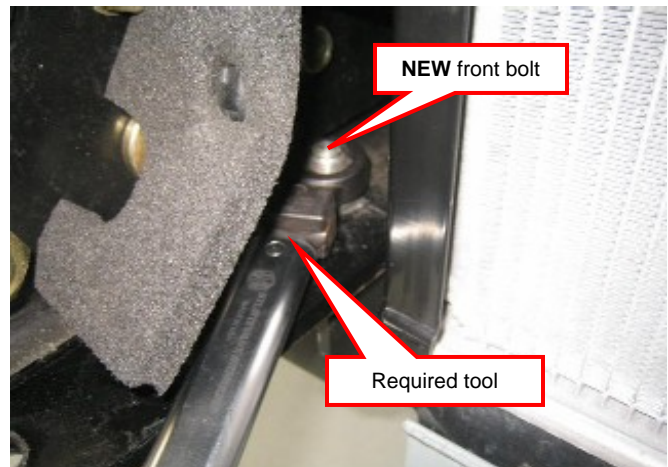


NOTE: Loosen the nuts until the bolts are free to move in all directions. This will ensure the bracket is loose and free to move.

CAUTION: The required tool must be used for applying the correct torque to the lower spring hanger bolts.

9. Torque the **NEW FRONT** bolt and nut right side lower spring hanger.

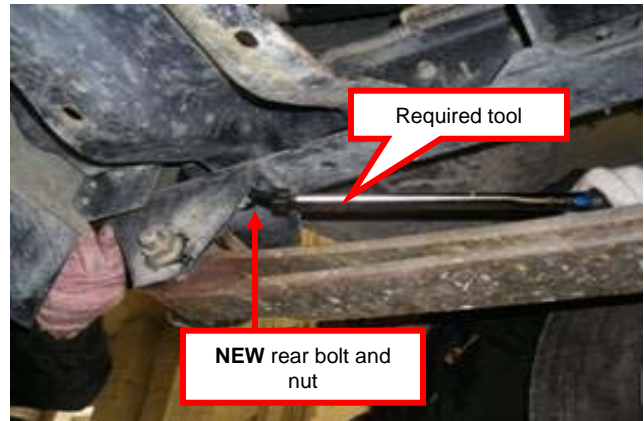
NOTE: Torque the front bolt from the top.



CAUTION: The required tool must be used for applying the correct torque to the lower spring hanger bolts.

10. Torque the **NEW REAR** bolt and nut right side lower spring hanger.

NOTE: Torque the rear bolt from the bottom
As seen in the picture at the right.



11. Tighten the side bolts to the specified torque.
(number of bolts varies by model)

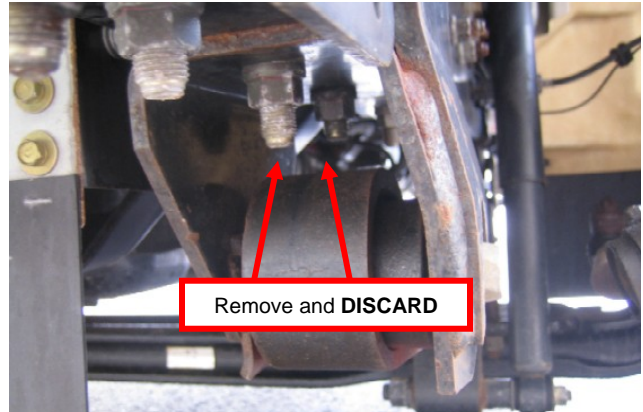
Torque Specification:

81 +/- 8 ft. lbs. (110 +/- 10.8 Nm)



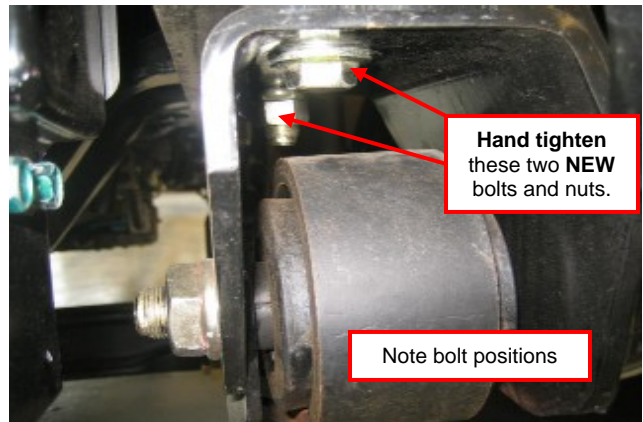
12. Turn the steering wheel fully to the right until it stops allowing full access to the left side.

13. On the left side of the vehicle, remove and discard both lower bolts and nuts for spring hanger bracket.



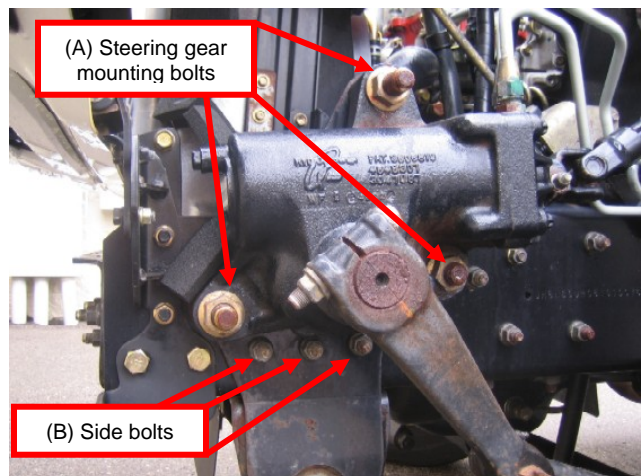
14. Install two **NEW** bolts and nuts, **HAND TIGHTEN ONLY.**

NOTE: The front bolt must be installed with the bolt head contacting the spring hanger bracket. The rear bolt must be installed with the nut contacting the spring hanger bracket.



CAUTION: DO NOT loosen the steering gear mounting bolts (A) prior to the side bolts (B). This will cause the side bolts to bend.

15. On the left side of the vehicle, loosen the side bolts (B) that secure the spring hanger bracket to the frame side rail. **(number of bolts varies by model)**



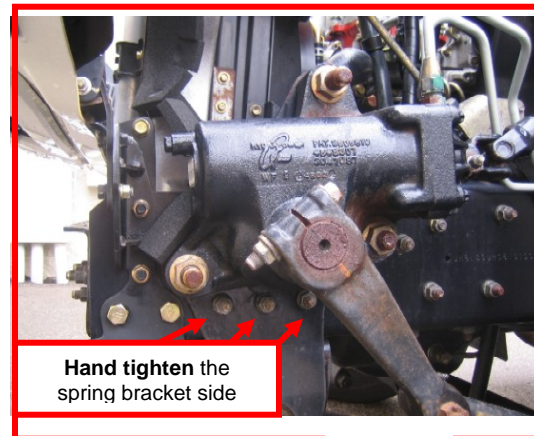
NOTE: Loosen the nuts until the bolts are free to move in all directions. This will ensure the bracket is loose and free to move.

16. Loosen the three steering gear mounting nuts.

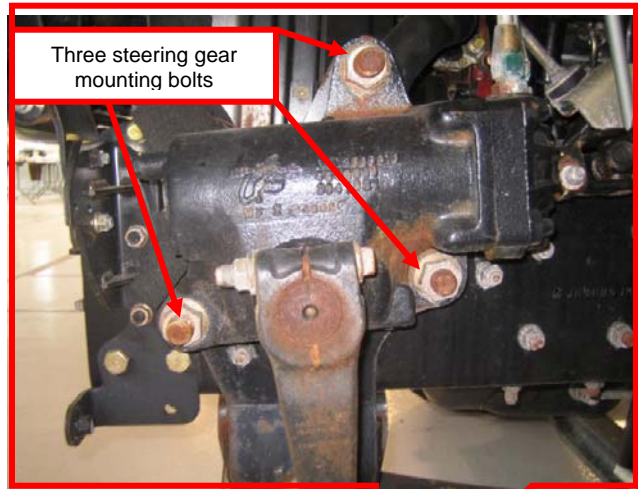
Make sure the steering gear and spring hanger bracket are loose and free to move.



17. **HAND TIGHTEN** the side bolts until the spring bracket contacts the frame rail.



18. **HAND TIGHTEN** the three steering gear mounting nuts until the steering gear touches the spring hanger bracket.

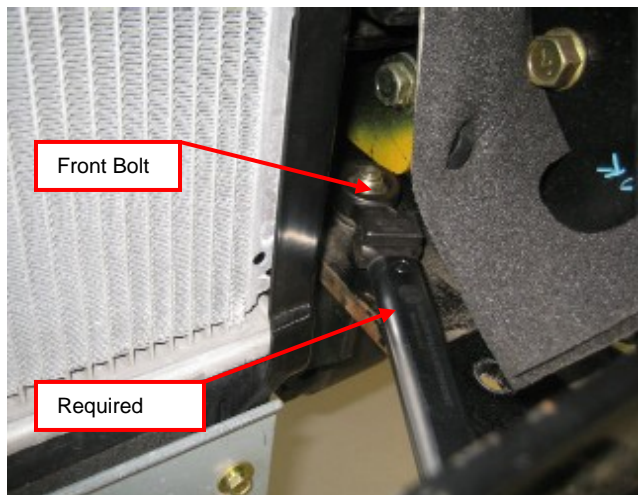


CAUTION: The required tool must be used for applying the correct torque to the lower spring hanger bolts.

19. Torque the **NEW FRONT** and **REAR** left side lower spring hanger bracket bolts and nuts.

NOTE: Torque the front bolt from the top. Torque the rear bolt from the bottom.

The picture at right shows the front bolt being torqued from the top.

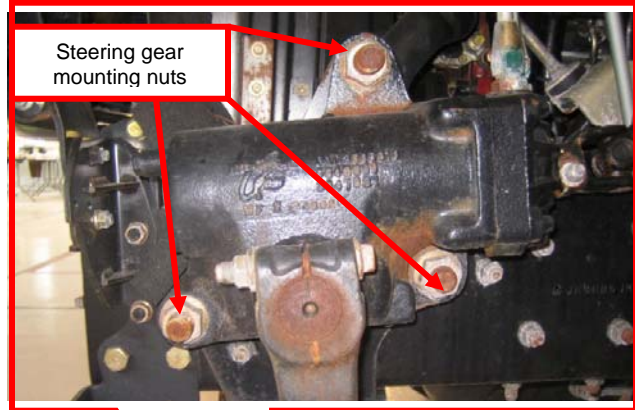


CAUTION: Do not tighten the spring hanger side bolts prior to the steering gear mounting bolts. This will cause the spring hanger side mounting bolts to loosen.

- 20. Torque the three steering gear mounting nuts to the specified torque.

Torque Specification

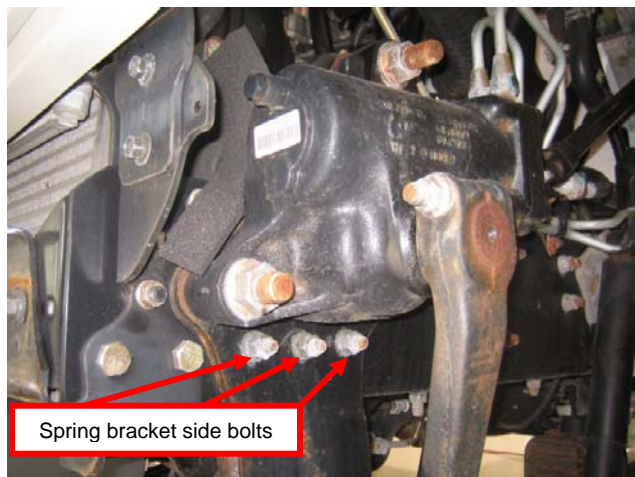
385 +/- 20 ft. lbs (522 +/- 27.1 Nm)



- 21. Torque the left spring hanger bracket side bolts to the specified torque.
(number of bolts varies by model)

Torque Specification:

81 +/- 8 ft. lbs. (110 +/- 10.8 Nm)



22. Reinstall the #1 crossmember.



23. Install, **HAND TIGHTEN**, the original four vertical bolts and original four nuts onto the underside of the #1 crossmember right and left side of vehicle.

(pictures shows left side of vehicle)



NOTE: If any nuts or bolts were missing or damaged, replace with flange bolt SZ10714013 and flange nut SZ17814006.

24. Re-install and **HAND TIGHTEN** the nuts for the front #1 crossmember.



- 25. Check the contact of the #1 crossmember between the frame and the mounting brackets. Make sure that no light can be seen between the parts in these two areas.



If light can be seen, use a wrench to tighten the nut/bolt until no light can be seen.



NOTE: Perform this check and/or adjustment on BOTH sides of the vehicle.

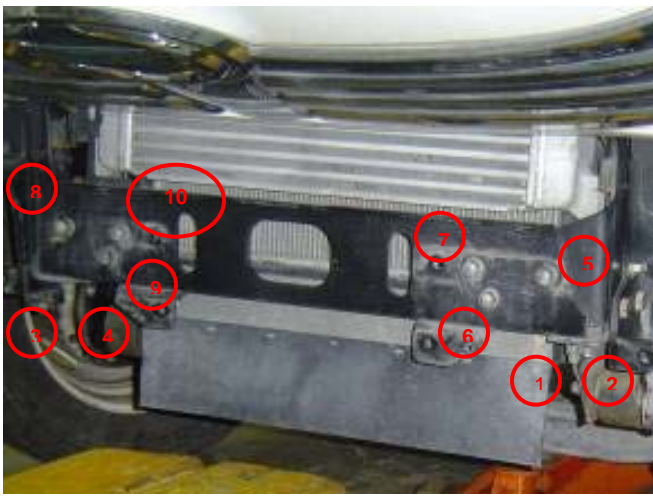
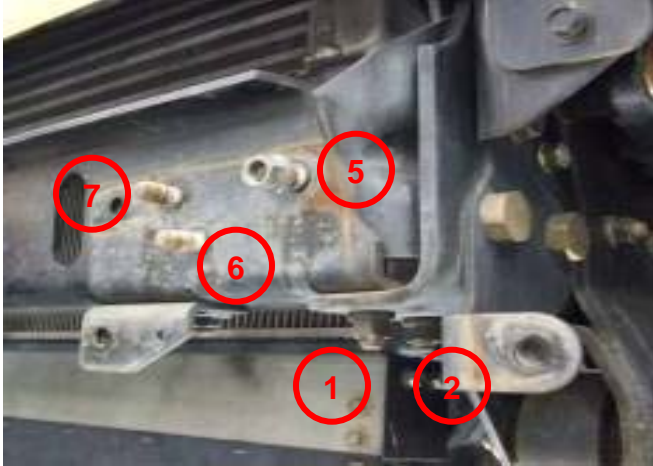
CAUTION: If NEW BOLTS are used in positions 1-4 in Step 26, the required tool must be used for applying the correct torque. If the ORIGINAL BOLTS are used in positions 1-4 torque to the specified torque.

26. Tighten the ten #1 crossmember bolts and nuts to the specified torque in the order listed below.

- ① Left underside front
- ② Left underside rear
- ③ Right underside front
- ④ Right underside rear
- ⑤ Left front outside
- ⑥ Left front lower
- ⑦ Left front inside
- ⑧ Right front outside
- ⑨ Right front lower
- ⑩ Right front inside

Torque Specification

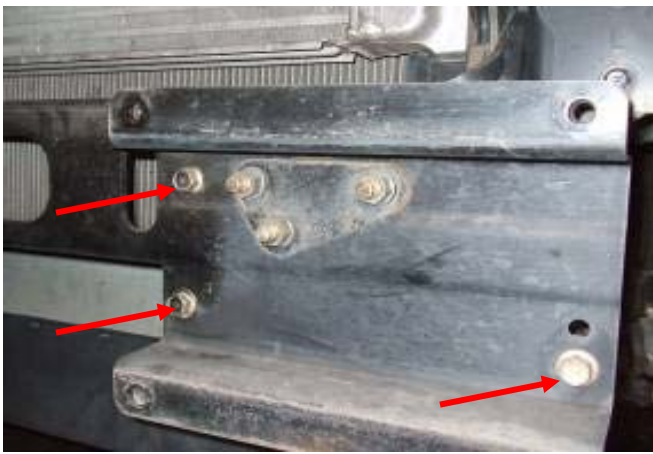
70 +/- 6 ft.lbs. (94.5 +/- 8.1 Nm)



27. Re-install the bumper stay and tighten the three bolts to the specified torque. Do the same on the other side.

Torque Specification

96 +/- 10 ft.lbs. (130 +/- 13.5 Nm)





A Toyota Group Company

TRUCKS™

Safety Recall

- 28. Re-install the front bumper extensions (if equipped) and tighten the four bolts to the specified torque. Do the same on the other side.

Torque specification

96 +/- 10 ft.lbs. (130 +/- 13.5 Nm)



CAUTION: To prevent personal injury ask for assistance when installing the bumper onto the vehicle.

- 29. Re-install the bumper. Hand tighten the bolts until they contact the bumper.



- 30. Tighten the bumper bolts to the specified torque.

Specified Torque

96 +/- 10 ft.lbs. (130 +/- 13.5 Nm)



WARRANTY CLAIM INFORMATION
CAMPAIGN NUMBER: A5850
TIME ALLOWANCE: 1.5 hours
WARRANTY CODE: 6121198
OPERATION CODE: 531199
ORIGINAL PART NUMBERS: 999999999