



June 6, 2008

Mr. Daniel Smith
Associate Administrator for Enforcement
National Highway Traffic Safety Administration
1200 New Jersey Avenue, SE
Washington, D.C. 20590

RE: NHTSA Recall 08V-161, Hyundai Recall 083

Dear Mr. Smith:

Hyundai Motor Company previously submitted a Defect Information Report to NHTSA regarding a recall campaign of approximately 393,714 model year 2006-2008 Hyundai Sonata vehicles produced beginning on March 1, 2005 through January 11, 2008 (NHTSA Recall Number 08V-161) pursuant to Part 573 of Title 49 of the Code of Federal Regulations. The vehicle quantity affected by this recall campaign has been revised to 393,308 vehicles. Owner notification will be conducted in several mailings and began on June 2, 2008.

Enclosed for NHTSA's files are final copies of the Technical Service Bulletin, owner notification letter and dealer notification letter.

Sincerely,

A handwritten signature in black ink that reads "Robert Babcock".

Robert Babcock
Senior Manager, Regulation and Certification Department

Attachment

Hyundai-Kia America Technical Center Inc.
6800 Geddes Road, Superior Township, MI 48198
TEL: 734-337-9499 FAX: 734-483-5919
www.hatci.com

HATCI is an authorized representative of both Hyundai Motor Company and Kia Motors Corporation; which are separate and distinct automotive manufacturers.

RECEIVED
JUN 19 P 3:08
STANDARD
JUN 19 2008

May 30, 2008

TO: ALL HYUNDAI DEALER PRINCIPALS/GENERAL MANAGERS:
ALL HYUNDAI DEALERSHIP SERVICE MANAGERS:
ALL HYUNDAI DEALERSHIP PARTS MANAGERS:
ALL HYUNDAI DEALERSHIP SALES MANAGERS:

SUBJECT: Campaign 083 - 2006 - 2008 Sonata - Occupant
Classification System (OCS) Reprogramming

Hyundai Motor America is conducting a Customer Notification Occupant Classification System (OCS) Reprogramming campaign on certain 2006 - 2008 Model Year Sonatas.

THIS CAMPAIGN IS ONLY TO BE PERFORMED ON AN INDIVIDUAL CUSTOMER COMPLAINT BASIS AFTER VERIFYING THAT THE OCCUPANT CLASSIFICATION SYSTEM DOES NOT RECOGNIZE A PROPERLY SEATED ADULT PASSENGER. IT IS NOT NECESSARY OR DESIRABLE TO REPROGRAM EVERY VEHICLE'S OCS.

Because not every vehicle should receive OCS reprogramming, vehicles eligible for this Campaign **ARE NOT** identified as having an open Campaign 083 on Hyundai Motor America's "Warranty Vehicle Information" screen via DCS On-line.

The Dealer Letter, Customer Letter, and Technical Service Bulletin (TSB) #08-01-006 containing instructions on the campaign procedure and submission of the campaign claim, will be posted on Hyundai's Website on May 30, 2008.

Customer notification letters will be mailed to all affected customers starting the week of June 2, 2008 and will continue in weekly flights until all letters have been sent.

It is IMPORTANT TO SUBMIT A CAMPAIGN CLAIM FOR EACH VEHICLE SERVICED so your dealership can be compensated for your work and Hyundai can maintain accurate records of campaign completions.

LEGAL LIABILITY NOTICE: You are required to keep confidential any and all information and documents provided to you by Hyundai Motor America in the conduct of carrying out work for this campaign. Hyundai Motor America dealers may use owner information provided for the campaign only for the purpose of conducting and performing this campaign, and for no other purpose.

Hyundai appreciates your cooperation and support. Questions may be directed to your District Parts and Service Manager or Warranty HELPREP line at 1-877-446-2922.

HYUNDAI MOTOR AMERICA



HYUNDAI Technical Service Bulletin

Group	BODY ELECTRICAL
Number	08-01-006
Date	MAY, 2008
Model	2006-2008 SONATA

Subject
**OCCUPANT CLASSIFICATION SYSTEM (OCS)
REPROGRAMMING - CAMPAIGN 083**

CIRCULATE TO:	<input type="checkbox"/> GENERAL MANAGER	<input checked="" type="checkbox"/> PARTS MANAGER	<input checked="" type="checkbox"/> TECHNICIAN
<input checked="" type="checkbox"/> SERVICE ADVISOR	<input checked="" type="checkbox"/> SERVICE MANAGER	<input checked="" type="checkbox"/> WARRANTY MGR	<input type="checkbox"/> SALES MANAGER

IMPORTANT: THIS CAMPAIGN IS ONLY TO BE PERFORMED ON AN INDIVIDUAL CUSTOMER COMPLAINT BASIS. IT IS NOT NECESSARY OR DESIRABLE TO REPROGRAM EVERY VEHICLE'S OCS. BECAUSE OF THIS, THE WARRANTY VEHICLE INFORMATION SCREEN WILL NOT IDENTIFY AN OPEN CAMPAIGN 083 ON ANY VEHICLE.

SERVICE MANAGER:

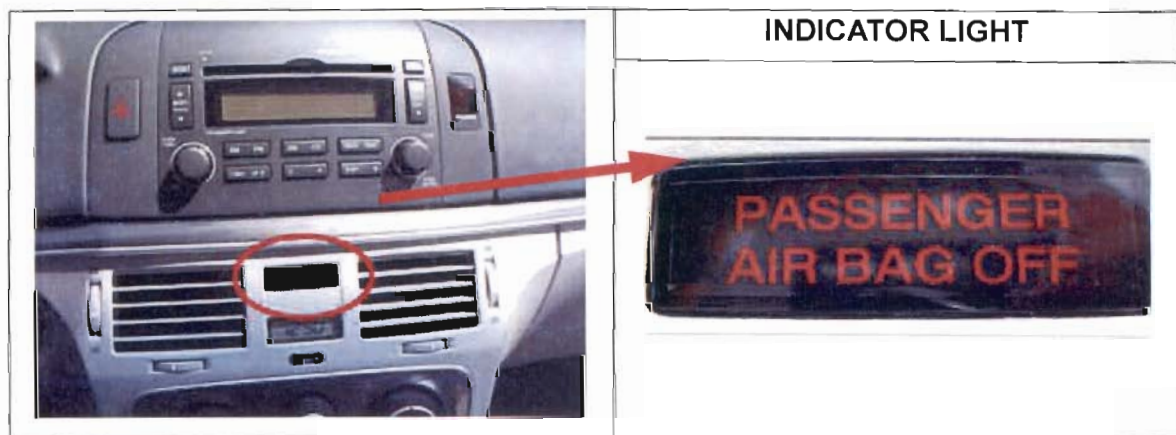
Please review entire TSB with all Service Advisors, Technicians and Warranty Administrators.

DESCRIPTION:

The Occupant Classification System (OCS) "PASSENGER AIR BAG OFF" indicator light may not turn off when some smaller stature adults are seated in the right front passenger seat of some 2006, 2007 and 2008 model year Sonata vehicles.

On **AN INDIVIDUAL CUSTOMER COMPLAINT BASIS**, this OCS reprogramming procedure may be performed **only** if the "PASSENGER AIR BAG OFF" indicator light remains on when small stature adults are seated in the right front passenger position.

NOTE: Evaluations must be made with the passenger who experiences this condition.



VEHICLES AFFECTED:

- Model: Model years 2006-2008 Sonata vehicles.

GENERAL INFORMATION:

- The OCS is designed to detect when the right front passenger seat is occupied by a child restraint system or a child so the air bag for that seat can be disabled. The OCS is also designed to detect when the right front passenger seat is occupied by an adult of sufficient stature to make potential air bag deployment appropriate.
- When an adult passenger is detected, the passenger air bag and passenger seat belt pretensioner circuitry is enabled and the "PASSENGER AIR BAG OFF" indicator light is turned off. If an adult passenger is not detected, or when a child restraint system or child is detected, the passenger air bag and passenger seat belt pretensioner circuitry is disabled and the "PASSENGER AIR BAG OFF" indicator light is turned on.
- To be able to properly detect a seated adult passenger, the OCS requires the right front passenger to be properly seated (sitting upright with the seat back in an upright position, centered on the seat cushion, with legs comfortably extended along the seat surface). The pressure pattern applied to the seat cushion by the seated occupant is used as the criteria for evaluating the presence of an occupant. Both weight and seating position are necessary to create the seating pressure that indicates the presence of an adult occupant. If the OCS pressure pattern indicates the seat is occupied by someone of light weight, or the passenger is out of position, or is taking their weight off of the seat for a period of time, the OCS system will disable the airbag and illuminate the "PASSENGER AIR BAG OFF" indicator light.
- The OCS light may also turn on for tall and light weight adults when their feet are pulled to a position on the floor close to the seat cushion, raising their legs off the front of the cushion.

WARNING: Aftermarket equipment, such as seat covers, must not be used because they can affect OCS system operation.

NOTE: The operation of the driver air bag, driver seat belt pretensioner, driver and passenger side impact air bags, and curtain air bags are not affected by the OCS.

INSPECTION PROCEDURE:

1. The customer contacts the dealership regarding the "PASSENGER AIR BAG OFF" indicator light operation.



HYUNDAI Technical Service Bulletin

Group

BODY ELECTRICAL

Number

08-01-006

2. Make an appointment when the customer can bring both the car and the passenger who has experienced the "PASSENGER AIR BAG OFF" indicator light condition.
3. The Service Advisor must verify the passenger is sitting correctly, as per the following steps:
 - a. Make sure that the adult passenger at issue is present for the initial confirmation procedure. Ask the passenger to sit in his or her normal position in the right front seat. Turn on the ignition and observe the "PASSENGER AIR BAG OFF" indicator light.
 - b. If the "PASSENGER AIR BAG OFF" indicator light does not turn off, please ask the right front passenger to sit upright, not to lean or recline, and to comfortably extend their legs to make sure their legs contact the front portion of the seat cushion.
 - c. If sitting in the proper position does not cause the "PASSENGER AIR BAG OFF" indicator light to turn off, the OCS may be reprogrammed to help detect the presence of a properly seated small stature adult.
 - d. If sitting in the proper position does cause the "PASSENGER AIR BAG OFF" indicator light to turn off, then the vehicle should NOT be reprogrammed.

NOTE: Every right front passenger evaluation should be performed as follows:

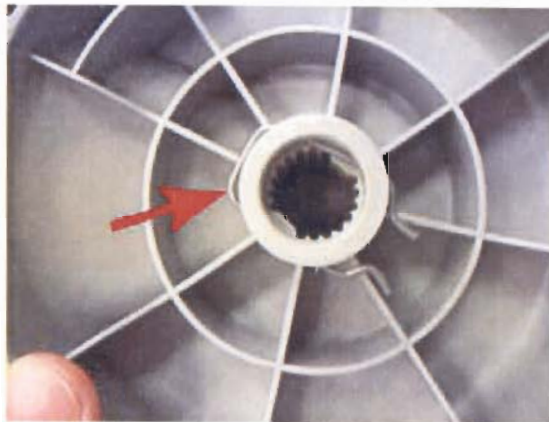
- (1) The passenger must sit in the right front seat,
- (2) Turn on the ignition,
- (3) Check if the "PASSENGER AIR BAG OFF" indicator light is illuminated after 30 seconds. A few seconds delay for the OCS "PASSENGER AIR BAG OFF" indicator light to turn off just after turning on the ignition does not indicate a problem.

NOTE: If a customer requests service for an instrument cluster "AIR BAG" warning lamp illumination condition, use a scan tool or GDS to determine if an OCS-related code (B1448, B1449, or B1450) is present. If the code(s) is present, indicate the code on the repair order, and follow the service procedure below.

NOTE: If the code(s) is not an OCS-related code, repair the condition(s) under normal warranty.

SERVICE PROCEDURE:

1. Record the radio station presets, and disconnect the vehicle negative battery cable from the battery.
2. Disconnect all connectors from under the seat and remove the front passenger seat assembly.
3. Remove the recliner lever by removing the metal clip.



4. Remove the plastic side outer cover by unfastening 3 mounting screws.





HYUNDAI Technical Service Bulletin

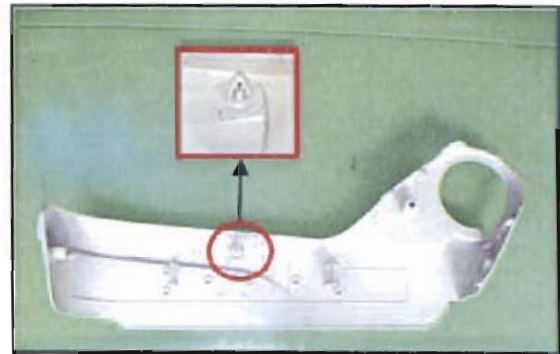
Group

BODY ELECTRICAL

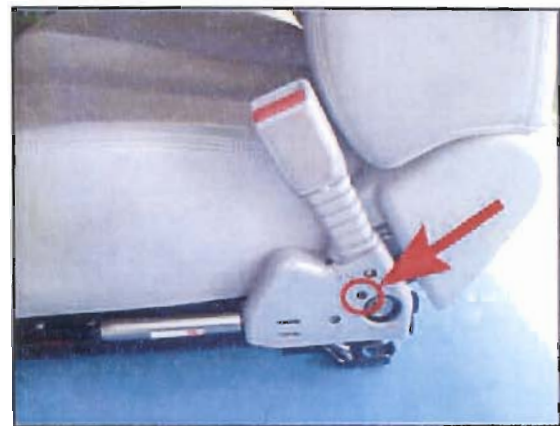
Number

08-01-006

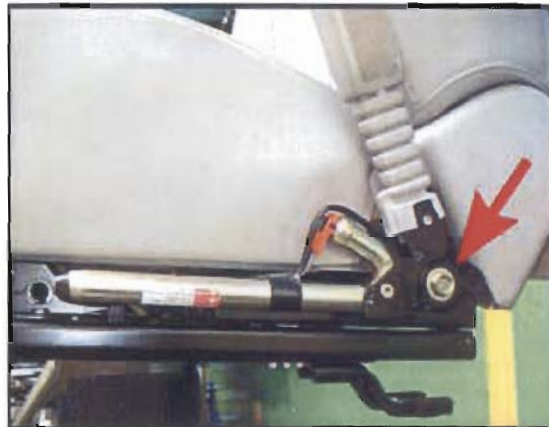
NOTE: When removing the side outer cover, verify the clip (p/n 88173-3K000) is installed on the outer cover. If the clip remains lodged on the seat bracket, remove it and install it onto the side outer cover.



5. Remove the seat buckle cover by unfastening the screw.



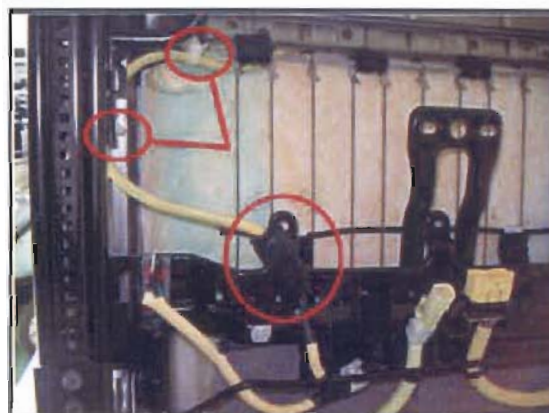
6. Unfasten the seat buckle mounting bolt to get access to the seat cushion covering fixing hook. Tightening torque: 39.2~53.9 N.m (4.0~5.5 kgf.m, 28.9~39.8 lb.ft).



7. Raise the front seat and disengage the 2 seat covering fixing hooks on the bottom side of the seat.



8. Disconnect the OCS wiring connector and disengage the 2 wiring clips.





HYUNDAI Technical Service Bulletin

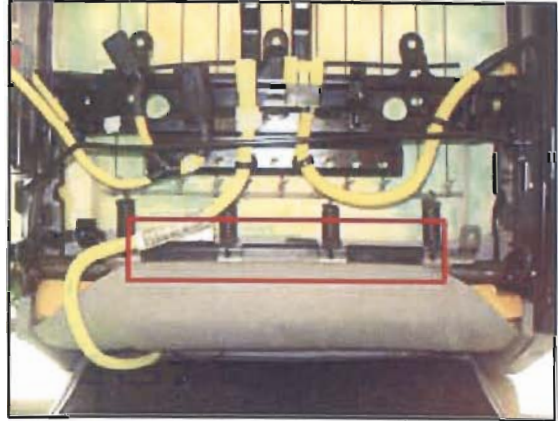
Group

BODY ELECTRICAL

Number

08-01-006

9. Disengage the front seat covering fixing clips.



10. Disengage the right and left seat covering fixing clips.



11. Remove the seat cushion assembly from the seat assembly.



NOTE: Document any pre-existing marks or damage on the cushion in the repair order.

12. Completely wrap the seat cushion in clean plastic or paper. Tape the covering so it cannot come loose during shipping.

NOTE: Do not send the entire seat assembly. Send only the seat cushion assembly.

13. Tape an envelope with a copy of the repair order and the dealer shipping account number to the seat cushion assembly wrapping. Also, include a return shipping label.
14. Select a suitable sturdy box. Place the wrapped cushion into the box with enough packing material to keep it from shifting during transit.
15. Send the seat cushion assembly to the Hyundai Warranty Technical Center (WTC) address listed below via an **OVERNIGHT DELIVERY COMPANY**, such as FedEx.

NOTE: Both OUTBOUND and RETURN shipment of the seat cushion should be prepaid (bill sender) by the dealer. Place the Return Shipping Label with the repair order. See page 9 of TSB for freight reimbursement procedure.

**Hyundai Warranty Technical Center
Attention: OCS
18335 Mount Langley, Unit A
Fountain Valley, CA 92708**

NOTE: Do not include any other WTC parts with the OCS shipment.

16. Fax a copy of the repair order to (714) 378-5179. The repair order should include a contact name, phone number, the delivery carrier's name and tracking number.

NOTE: After the OCS has been reprogrammed, the seat cushion will be returned to your dealership so it may be reinstalled in the customer's vehicle.

17. When the reprogrammed seat cushion arrives, verify that you have received the correct seat cushion assembly.
18. Reinstall the cushion assembly in reverse order of removal.
19. Reinstall the seat assembly and connect all connectors and wire tie clips.

**Tightening torque for seat mounting bolts:
35~55 Nm (3.5-5.5 kgf.cm, 25~40 lb.ft)**



HYUNDAI Technical Service Bulletin

Group

BODY ELECTRICAL

Number

08-01-006

20. Reconnect the battery cable, reprogram the radio stations, reset the clock, and verify no codes were stored in the SRS module.

NOTE: If the cushion is not returned to your dealership within 3 working days after shipping to the WTC, please contact (877) 446-2982 for assistance.

WARRANTY INFORMATION:

OP CODE	OPERATION	OP TIME
81B012R0	Evaluation, seat cushion removed, packaged, shipped, unpackaged, and reinstalled.	0.6 M/H

CAMPAIGN CLAIM NOTES - PLEASE READ IN ITS ENTIRETY:

NOTE 1: Submit claim using the Campaign Claim Screen.

NOTE 2: Rental amount of 4 days, X \$35.00 = \$140.00, will be automatically added to the campaign claim.

NOTE 3: Freight amount will be automatically added, based upon the dealer's region as shown below.

REGION	OVERNIGHT FREIGHT
Central Region	\$148.00
Eastern Region	\$154.00
California Region	\$128.00
South Central Region	\$144.00
Southern Region	\$154.00
Western Region	\$138.00

MOTOR VEHICLE RECALL

Dear 2006, 2007 or 2008 Sonata Owner:

This notice is sent to you in accordance with the requirements of the National Traffic and Motor Vehicle Safety Act.

Federal law requires that any vehicle lessor receiving this recall notice must forward a copy of this notice to the lessee within ten days.

Hyundai has decided that a defect, which relates to motor vehicle safety, exists in certain model year 2006, 2007, and 2008 Hyundai Sonata vehicles.

What is the problem?

- Your Sonata is equipped with an advanced air bag system meeting all federal regulations, which features an Occupant Classification System (OCS) in the right front seat. The purpose of the OCS is to disable the right passenger seat front air bag when it detects the presence of a child restraint system or small child in the right front seat. The right front air bag is disabled to prevent injuries to a child that may result from right front air bag inflation during a crash.

The OCS installed in the right front seat of your vehicle may misclassify a small stature adult as a child. This would cause the "PASSENGER AIR BAG OFF" lamp to illuminate and would deactivate the passenger front air bag. Misclassification of a small stature adult as a child in the right front passenger seat may cause the right front air bag to not inflate in an accident that merits air bag deployment and may result in injury to the right front occupant.

What will Hyundai do?

- If your vehicle's "PASSENGER AIR BAG OFF" lamp illuminates while the right front seat is occupied by an adult or if your vehicle's "AIR BAG" warning lamp is illuminated, we are asking you to schedule an appointment as soon as possible to take your vehicle to your Hyundai dealer. The Hyundai dealer will check your vehicle to confirm that the OCS is not properly recognizing an adult passenger. After confirmation, the Hyundai dealer will remove the right front seat cushion assembly and send it to an evaluation and repair station, which will inspect the right front seat cushion assembly OCS for proper operation and then will reprogram the OCS, if necessary, to provide a greater margin of recognition for adults seated in the right front seat. This procedure will be performed at no charge to you. You should plan to leave your vehicle at your Hyundai dealer to have this service performed. Hyundai will provide you with a vehicle at no cost for your use while your vehicle is being serviced.

This reprogramming is not recommended for most vehicles and is not an upgrade or enhancement. The reprogramming is only intended to improve the capability of the OCS to recognize a small segment of adult seated passengers.

What should you do?

- You should make sure that adult passengers seated in the right front seat always sit upright with the seatback in an upright position, centered on the seat cushion, with the seat belt on and legs comfortably extended. This will help the OCS to recognize the seated occupant as an adult.

If your vehicle's "PASSENGER AIR BAG OFF" lamp illuminates while the right front seat is occupied by an adult or if your vehicle's "AIR BAG" warning lamp is illuminated, we urge you to call your Hyundai dealer to schedule an appointment to have this work performed as soon as possible.

What if you have other questions?

- If you have any difficulty having this repair performed, we recommend that you call the Hyundai Customer Assistance Center at 1-800-633-5151. If you are still not satisfied that we have remedied this situation without charge, and within a reasonable amount of time, you may wish to write to the Administrator, National Highway Traffic Safety Administration, 1200 New Jersey Avenue, SE, Washington, D.C. 20590, or call their toll-free Vehicle Safety Hotline at 1-888-327-4236 (TTY: 1-800-424-9153), or go to <http://www.safercar.gov>.

WARNING: Hyundai recommends that Child Restraint Seats (CRS) must always be properly installed in the rear seat. Child restraint seats must never be installed in the front seat. Hyundai also recommends that all children under the age of thirteen always ride only in the rear seat, properly wearing their seat belts. Should an accident occur and cause the right front air bags to inflate, it could cause severe injury or death for an infant or child seated in a CRS or for a child seated in the right front seat.

We urge your prompt attention to this important safety matter.

Hyundai Motor America