



Michael A. Berardi
Director
Service Engineering Operations
Ford Customer Service Division

Ford Motor Company
P. O. Box 1904
Dearborn, Michigan 48121

February 6, 2008

TO: All U.S. Ford and Lincoln Mercury Dealers

SUBJECT: Safety Recall 08S01: Certain 1992-2003 Model Year Cars & Trucks
Fused Jumper Harness Replacement for Vehicles Serviced
With an Incompatible Fused Jumper Harness

REF: Awareness Communication Letter dated January 29, 2008

AFFECTED VEHICLES

- 1992-1998 Crown Victoria/Grand Marquis
- 1992-1995 Town Car
- 1993-1995 Taurus SHO
- 1993 Bronco
- 1992-2003 Econoline vehicles with gasoline engine
- 1993 F-Series Trucks with gasoline engine
- 1995-1997 F-Series Stripped Chassis with gasoline engine

Affected vehicles are identified in OASIS. In addition, for a list of vehicles assigned to your dealership, visit <https://web.fsavinlists.dealerconnection.com>. This information will be available on February 6, 2008.

REASON FOR THIS SAFETY RECALL

Our service records indicate that the affected vehicles were previously repaired using a Fused Jumper Harness (part number 4W1Z-14A411-BC) that is not compatible with the vehicle circuit polarity. As a result, the fuse is located in the output circuit rather than in the input power feed circuit, and may not offer the intended protection in the event of an electrical short to ground.

SERVICE ACTION

Remove the incorrect Fused Jumper Harness (part number 4W1Z-14A411-BC) from the vehicle and install the correct Fused Jumper Harness or a new Speed Control Deactivation Switch as described in Attachment III. This service must be performed on affected vehicles at no charge to the vehicle owner.

PLEASE NOTE:

Federal law requires dealers to complete this recall service before a new vehicle is delivered to the buyer or lessee. Violation of this requirement by a dealer could result in a civil penalty of up to \$6,000 per vehicle. Correct all vehicles in your new vehicle inventory before delivery.

ATTACHMENTS

- Attachment I: Administrative Information
- Attachment II: Labor Allowances and Parts Ordering Information
- Attachment III: Technical Information
- Customer Notification Letter

QUESTIONS & ASSISTANCE

Special Service Support Center (Dealer Only)1-800-325-5621

Sincerely,



Michael A. Berardi

Safety Recall 08S01
Certain 1992-2003 Model Year Cars & Trucks
Fused Jumper Harness Replacement for Vehicles
Serviced With an Incompatible Fused Jumper Harness

OASIS ACTIVATED?

Yes, OASIS will be activated by February 6, 2008.

FSA VIN LIST ACTIVATED?

Yes, VIN list is available through <https://web.fsavinlists.dealerconnection.com> by February 6, 2008. Owner names and addresses will be available March 3, 2008.

NOTE: Your FSA VIN list may contain owner names and addresses obtained from motor vehicle registration records. The use of such motor vehicle registration data for any purpose other than in connection with this recall is a violation of law in several states, provinces, and countries. Accordingly, you must limit the use of this listing to the follow-up necessary to complete this recall action.

STOCK VEHICLES

Correct all affected units in your new vehicle inventory before delivery.

SOLD VEHICLES

- Owners of affected vehicles will be directed to dealers for repairs.
- Immediately contact any of your affected owners whose vehicles are not on your VIN lists but are identified in OASIS. Give the owner a copy of the Customer Notification Letter (when available) and schedule a service date.
- Correct other affected vehicles identified in OASIS which are brought to your dealership.

TITLE BRANDED / SALVAGED VEHICLES

Affected title branded and salvaged vehicles are eligible for this Field Service Action.

RELATED DAMAGE

If a related damage condition exists that you believe to be caused by the covered condition, call the Special Service Support Center to request approval **prior** to the repair of any related damage. Requests for approval after completion of the repair will not be granted. Ford Motor Company reserves the right to deny coverage for related damage in cases where the vehicle owner has not had this recall performed on a timely basis.

ADDITIONAL LABOR TIME

- If a condition exists that requires additional labor to complete the repair, call the Special Service Support Center to request approval **prior** to performing any additional labor. Requests for approval after completion of the repair will not be granted.
- If you encounter aftermarket equipment or modifications to the vehicle which might prevent the repair of the covered condition, call the Special Service Support Center.

Safety Recall 08S01
Certain 1992-2003 Model Year Cars & Trucks
Fused Jumper Harness Replacement for Vehicles
Serviced With an Incompatible Fused Jumper Harness

OWNER REFUNDS

Refunds are not authorized for this program.

RENTAL VEHICLES

The use of rental vehicles is not authorized for this program.

CLAIMS PREPARATION AND SUBMISSION

- **For vehicles prior to MODEL YEAR 1997: Enter the appropriate labor operation and its respective labor time on the claim. (The labor time will not automatically appear with the labor operation.)**
 - Enter claims using Direct Warranty Entry (DWE).
 - Related damage must be claimed on a repair line that is separate from the repair line on which the FSA is claimed.
 - "MT" labor should be submitted on a separate repair line with the related damage flag checked.
 - Claiming Information for Electrical Grease II (Submit on same repair line as repair.)
 - Program Code: 08S01
 - Misc. Expense: OTHER
 - Misc. Expense: \$6.07
- NOTE:** Electrical Grease II can only be claimed when Labor Operation 08S01E or 08S01G is claimed. (Do not claim as "Normal Shop Supplies".)
- Refer to "**Vehicle Application & Repair Chart**" in Attachment II for Labor Operations, and the ACESII manual for claims preparation and submission information.
 - Enter claims using Direct Warranty Entry (DWE).

Safety Recall 08S01
 Certain 1992-2003 Model Year Cars & Trucks
 Fused Jumper Harness Replacement for Vehicles
 Serviced With an Incompatible Fused Jumper Harness

REPAIR DESCRIPTIONS & LABOR OPERATION

All labor operations involve removal of the 4W1Z-14A411-BC Fused Jumper Harness (FJH), inspection of the Speed Control Deactivation Switch (SCDS) for brake fluid contamination, and installation of the correct FJH, or a new SCDS, as specified in the chart below.

If the SCDS is leaking (wet), the labor operation also includes labor time for cleaning contamination from connectors, applying electrical grease to the electrical connectors and installing the new SCDS. Do not perform an Interim Repair (SCDS Disconnect) on any of the affected vehicles in this program.

The following chart provides the appropriate repair, part & labor operation number and labor time for each of the affected vehicle models and model years.

Note: The repairs authorized in the chart below apply only to the vehicles that had incorrect repairs performed. They do not apply to the vehicles still covered under Safety Recall 05S28.

Vehicle Application & Repair Chart

Affected Vehicles and Model Years		THE ONLY AUTHORIZED REPAIRS ARE THOSE SPECIFIED BELOW	
Vehicle Line	Model Year	REPAIR, PART, AND LABOR OPERATION / LABOR TIME	
		(Dry) Non-leaking SCDS	(Wet) Leaking SCDS
Taurus SHO	1993-1995	(FJH) 8W7Z-14A411-BB Labor Op 08S01B (0.2 Hrs.) Or (SCDS) XW7Z-9F924-BA Labor Op 08S01C (0.3 Hrs.)	(SCDS) XW7Z-9F924-BA Labor Op 08S01E (0.4 Hrs.)
Crown Victoria/Grand Marquis	1992-1998	(FJH) 8W7Z-14A411-BB Labor Op 08S01B (0.2 Hrs.) Or (SCDS) XW7Z-9F924-BA Labor Op 08S01C (0.3 Hrs.)	(SCDS) XW7Z-9F924-BA Labor Op 08S01E 0.4 Hrs.
Town Car	1992-1995	(FJH) 8W7Z-14A411-BB Labor Op 08S01B (0.2 Hrs.) Or (SCDS) XW7Z-9F924-BA Labor Op 08S01C (0.3 Hrs.)	(SCDS) XW7Z-9F924-BA Labor Op 08S01E 0.4 Hrs.
E-150, 250 & 350	1992-1993	(SCDS) 1L1Z-9F924-AA Labor Op 08S01D (0.4 Hrs.)	(SCDS) 1L1Z-9F924-AA Labor Op 08S01G (0.5 Hrs)
Econoline (All except above)	1992-2003	(SCDS) 1L1Z-9F924-AA Labor Op 08S01C (0.3 Hrs.)	(SCDS) 1L1Z-9F924-AA Labor Op 08S01E (0.4 Hrs)
Bronco	1993	(SCDS) 1L1Z-9F924-AA Labor Op 08S01C (0.3 Hrs.)	(SCDS) 1L1Z-9F924-AA Labor Op 08S01E (0.4 Hrs)
F-Series	1993	(SCDS) 1L1Z-9F924-AA Labor Op 08S01C (0.3 Hrs.)	(SCDS) 1L1Z-9F924-AA Labor Op 08S01E (0.4 Hrs)
F-Series Stripped Chassis	1995-1997	(SCDS) 1L1Z-9F924-AA Labor Op 08S01C (0.3 Hrs.)	(SCDS) 1L1Z-9F924-AA Labor Op 08S01E (0.4 Hrs)

Safety Recall 08S01
Certain 1992-2003 Model Year Cars & Trucks
Fused Jumper Harness Replacement for Vehicles
Serviced With an Incompatible Fused Jumper Harness

PARTS REQUIREMENTS / ORDERING INFORMATION

For part application see "Vehicle Application & Repair Chart" on page 1 of Attachment II.

Part Number	Description	Quantity
1L1Z-9F924-AA	Brake Kit - Kit Includes SCDS & Adapter Harness	1 Kit Per Vehicle
XW7Z-9F924-BA	Brake Kit - Kit Includes SCDS & Adapter Harness	1 Kit Per Vehicle
8W7Z-14A411-BB	Fuse Jumper Harness (FJH) (Package of 10 – One package services 10 vehicles)	1 Part Per Vehicle
Motorcraft Part #: XG-15-A	Electrical Grease II - <u>One</u> 3 oz. tube NOTE: Must be used when servicing any affected vehicle that has a leaking SCDS.	One 3 oz tube will service 10 vehicles.

SEED STOCK PLAN

See Safety Recall 05S28 Supplement #14 for 8W7Z-14A411-BB, XW7Z-9F924-BA and 1L1Z-9F924-AA seed stock plan.

Dealers will be notified via a DOES II when open ordering begins.

NOTE: If additional parts are necessary to service specific vehicles, contact the Special Service Support Center (1-800-325-5621). Please be prepared to provide your P&A Code, vehicle VIN, and vehicle owner name.

Questions regarding parts should be directed to the Special Service Support Center (800-325-5621) or E-mailed to: Ford@Renkim.com.

DEALER PRICE

For latest prices, refer to DOES II.

Follow the provisions of the Warranty and Policy Manual for "Parts Retention and Return Procedures".

EXCESS STOCK RETURN

Excess stock returned for credit must have been purchased from Ford Customer Service Division in accordance with Policy Procedure Bulletin 4000.

**CERTAIN 1992-2003 MODEL YEAR CARS AND TRUCKS — FUSED JUMPER
HARNES REPLACEMENT FOR VEHICLES SERVICED WITH AN
INCOMPATIBLE FUSED JUMPER HARNES**

TABLE OF CONTENTS

OVERVIEW	Page 2
SPEED CONTROL DEACTIVATION SWITCH (SCDS) LOCATION	Page 2
SPEED CONTROL DEACTIVATION SWITCH (SCDS) INSPECTION	Page 2
VEHICLE APPLICATION AND REPAIR CHART	Page 3
FUSED JUMPER HARNES (FJH) INSTALLATION	Page 4
LEAKING SPEED CONTROL DEACTIVATION SWITCH (SCDS) REPLACEMENT	Page 5
NON-LEAKING SPEED CONTROL DEACTIVATION SWITCH (SCDS) REPLACEMENT	Page 9



OVERVIEW

This program involves removing the 4W1Z-14A411-BC Fused Jumper Harness (FJH) that was previously installed during service on the affected vehicles and installing either the correct FJH, or a new Speed Control Deactivation Switch (SCDS), as specified in the Vehicle Application And Repair Chart on page 3 of 10.

NOTE: Do not perform an Interim Repair (SCDS Disconnect) on any of the affected vehicles in this program. Call the Special Service Support Center if you do not have the necessary parts to complete the final repairs.

SPEED CONTROL DEACTIVATION SWITCH (SCDS) LOCATION

In most late model year vehicles involved in this recall, the SCDS is located on the master cylinder. In early model year vehicles (1992-1998), the SCDS may be located on the master cylinder, but is often found on a brake line distribution block or on the brake proportioning valve. If in doubt, just follow the metal brake lines from the master cylinder until the switch is found.

- On early model year E-Series vehicles, the SCDS is located on the left frame rail.
- On E-450 models only, remove the 3 screws and position the coolant degas bottle forward to allow access to the SCDS and servo.
- On F-53 vehicles, if the SCDS is not located on the master cylinder, it may be located in a brake line junction block approximately 457 mm (18 in) below the master cylinder. It may be necessary to reposition wiring harnesses and/or remove add-on equipment in order to locate the switch.

SPEED CONTROL DEACTIVATION SWITCH (SCDS) INSPECTION

NOTE: On E-150/250/350 it may be necessary to lift the vehicle to disconnect the SCDS.

Remove the electrical connector from the speed control deactivation switch and check the fused jumper harness connector end for the presence of brake fluid. Cut the tie straps from the fused jumper harness and remove the fused jumper harness. Refer to the Vehicle Application & Repair Chart to identify the correct repair procedure.



VEHICLE APPLICATION AND REPAIR CHART

Affected Vehicles and Model Years		THE ONLY AUTHORIZED REPAIRS ARE THOSE SPECIFIED BELOW	
Vehicle Line	Model Year	REPAIR, PART AND LABOR OPERATION	
		(DRY) Non-leaking SCDS	(WET) Leaking SCDS
Taurus SHO	1993-1995	(FJH)8W7Z-14A411-BB Labor Op 08S01B Or (SCDS)XW7Z-9F924-BA Labor Op 08S01C	(SCDS)XW7Z-9F924-BA Labor Op 08S01E
Crown Victoria/ Grand Marquis	1992-1998	(FJH)8W7Z-14A411-BB Labor Op 08S01B Or (SCDS)XW7Z-9F924-BA Labor Op 08S01C	(SCDS)XW7Z-9F924-BA Labor Op 08S01E
Town Car	1992-1995	(FJH)8W7Z-14A411-BB Labor Op 08S01B Or (SCDS)XW7Z-9F924-BA Labor Op 08S01C	(SCDS)XW7Z-9F924-BA Labor Op 08S01E
E-150, 250 and 350	1992-1993	(SCDS)1L1Z-9F924-AA Labor Op 08S01D	(SCDS)1L1Z-9F924-AA Labor Op 08S01G
Econoline (All except above)	1992-2003	(SCDS)1L1Z-9F924-AA Labor Op 08S01C	(SCDS)1L1Z-9F924-AA Labor Op 08S01E
Bronco	1993	(SCDS)1L1Z-9F924-AA Labor Op 08S01C	(SCDS)1L1Z-9F924-AA Labor Op 08S01E
F-Series	1993	(SCDS)1L1Z-9F924-AA Labor Op 08S01C	(SCDS)1L1Z-9F924-AA Labor Op 08S01E
F-Series Stripped Chassis	1995-1997	(SCDS)1L1Z-9F924-AA Labor Op 08S01C	(SCDS)1L1Z-9F924-AA Labor Op 08S01E

NOTE: Do not perform an Interim Repair (SCDS Disconnect) on any of the affected vehicles in this program. Call the Special Service Support Center if you do not have the necessary parts to complete the final repairs.



FUSED JUMPER HARNESS (FJH) INSTALLATION

1. Connect the fused jumper harness to the SCDS and the vehicle harness.
2. Position the harness alongside an existing harness, located below or alongside the master cylinder, so that the fuse holder is higher than the rest of the jumper harness. This will cause any water that enters the engine compartment and gets on the jumper harness to run downhill away from the fuse holder.
3. Secure the jumper harness to the existing harness with tie straps, making sure the fuse holder is positioned vertically with the cap facing upward. Wrap the tie straps underneath, then over the top of the existing harness and verify proper fuse holder orientation. See Figure 1.

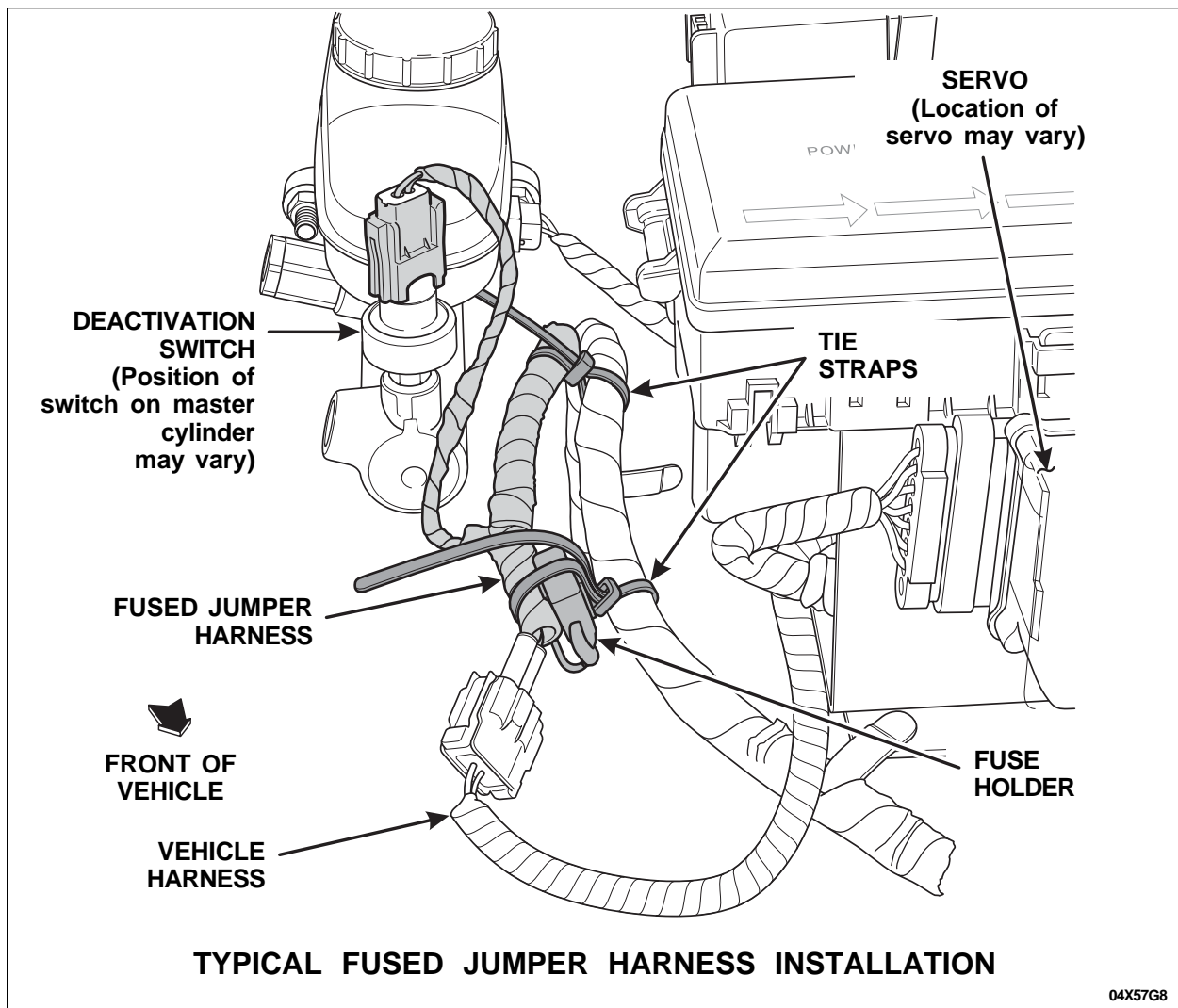


FIGURE 1



LEAKING SPEED CONTROL DEACTIVATION SWITCH (SCDS) REPLACEMENT

NOTE: The brake pedal must not be depressed during the removal and replacement of the SCDS.

1. Check the brake fluid level at the master cylinder and, if necessary, fill to maximum fluid level.

NOTICE: DO NOT apply fluid to the electrical connector or damage to the connector may occur.

2. Add a few drops of Motorcraft High Performance DOT 3 Motor Vehicle Brake Fluid, PM1-1 or PM-1-C (US), CPM-1-C (Canada), to the fluid port at the threaded end of the **new** SCDS. See Figure 2.

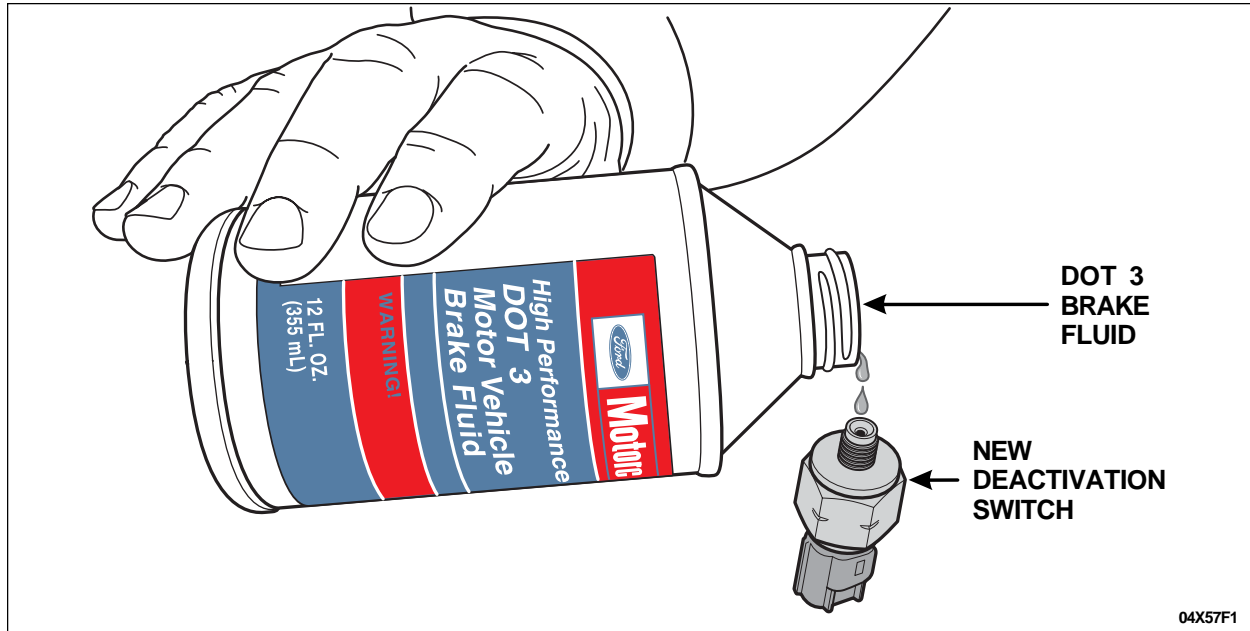


FIGURE 2

NOTICE: Do not allow any foreign material to enter the master cylinder port once the SCDS is removed.

NOTE: Call the Special Service Support Center for assistance if brake fluid does not flow from the SCDS fitting when the SCDS is removed.

NOTE: If the **new** SCDS is not installed immediately after the original switch is removed, the master cylinder brake fluid could drop below the minimum level and air could enter the brake system. If this should occur, air must be bled from the brake system at all 4 wheels. In this situation, the labor to bleed the brake system will not be covered under this program.

3. Remove the SCDS.



4. With the brake fluid reservoir cap removed, observe for brake fluid dripping/draining from the SCDS fitting. As soon as brake fluid begins to bleed from the fitting, install the **new** SCDS and tighten to 18 Nm (13 lb-ft).
5. Check the brake fluid level at the master cylinder, fill to maximum fluid level and install the brake fluid reservoir cap.
6. Disconnect the speed control servo and inspect the vehicle harness connector for heat damage.
See Figure 3.
 - If no heat damage is found at the speed control servo connector (even if there is presence of brake fluid in the connector), proceed to next step.
 - If the speed control servo connector is heat damaged, call the Special Service Support Center for further instructions.

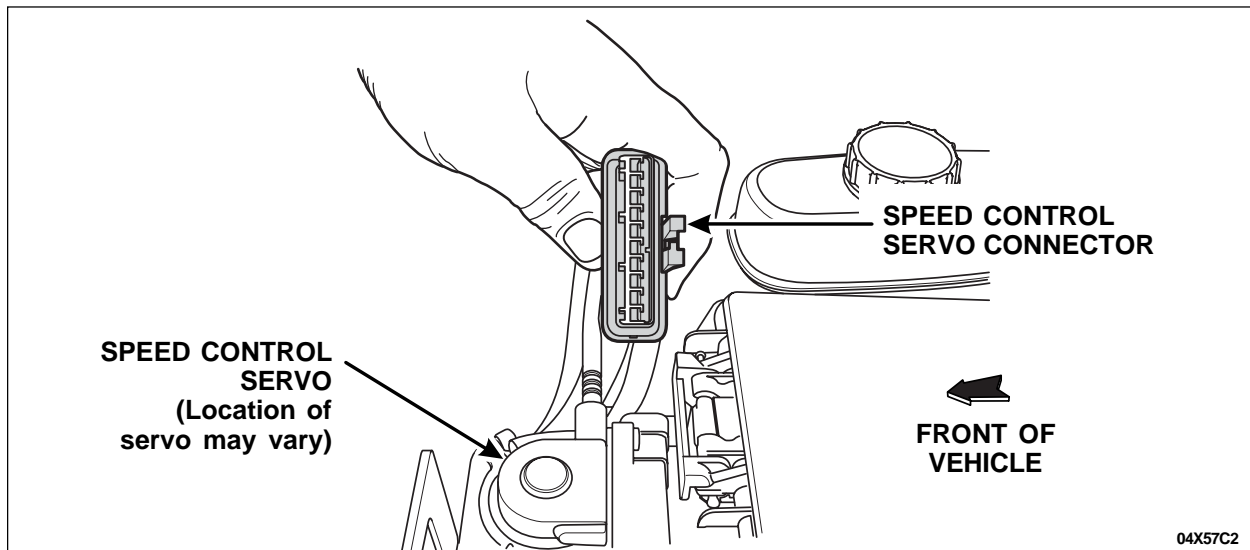


FIGURE 3

7. With the speed control servo disconnected, use shop air only to blow the SCDS harness electrical connector and the servo connector dry of any trace of brake fluid. Do not use any type of solvent to clean the connectors.



8. Cut approximately 3 mm (1/8 in) off the grease tube applicator tip.
9. Before installing the jumper harness, fill the vehicle harness end of the jumper (male pin connector end) with Motorcraft Electrical Grease II XG-15-A. See Figure 4.

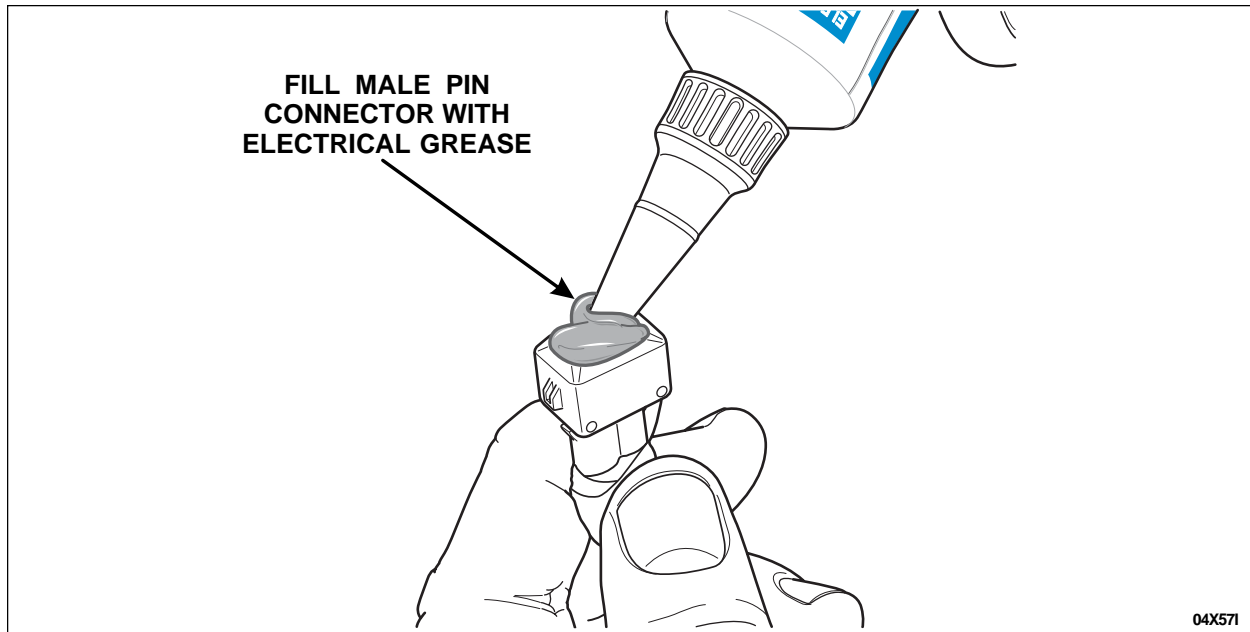


FIGURE 4

10. Install the adapter jumper harness by connecting it to both the SCDS and the vehicle harness. Using the provided tie strap, secure the jumper harness to a nearby component such as the speed control cable or another wire harness.

NOTICE: Be sure to apply an adequate amount of grease to the vehicle harness connector only. DO NOT apply the grease directly to the connector of the servo module.



11. Apply a 5 mm (3/16 in) high bead of Motorcraft Electrical Grease II XG-15-A across the entire width and length of the servo vehicle harness connector. See Figure 5.

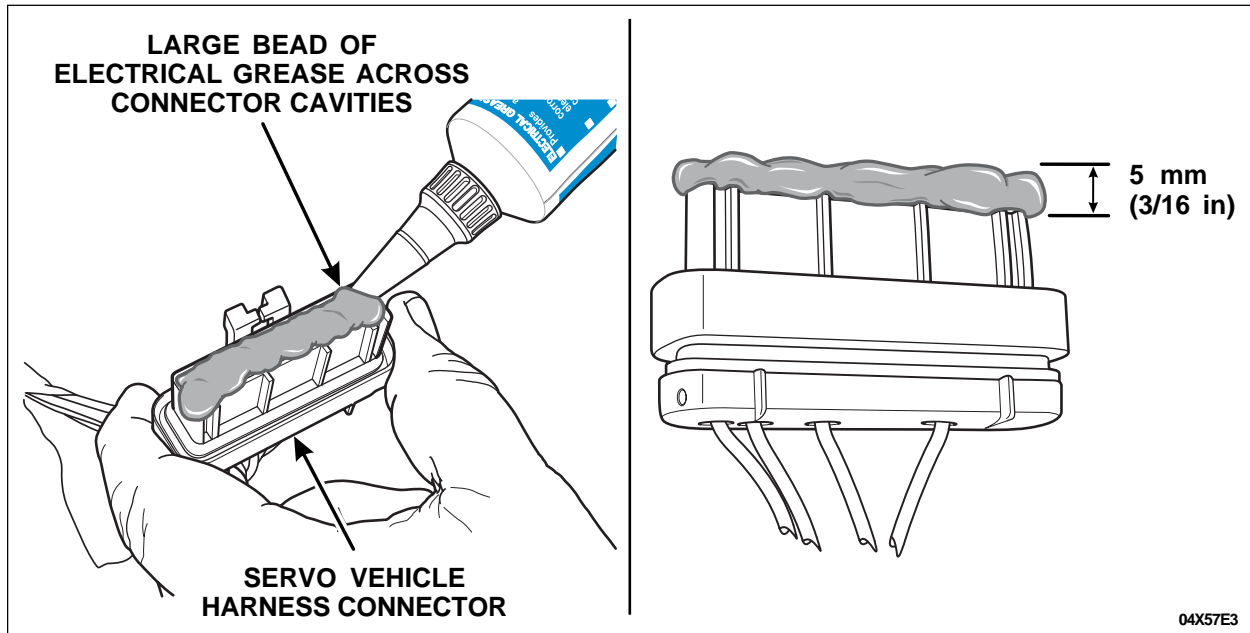


FIGURE 5

12. Reconnect the servo connector.
13. Release the vehicle.



NON-LEAKING SPEED CONTROL DEACTIVATION SWITCH (SCDS) REPLACEMENT

NOTE: The brake pedal must not be depressed during the removal and replacement of the SCDS.

1. Check the brake fluid level at the master cylinder and, if necessary, fill to maximum fluid level.

NOTICE: DO NOT apply fluid to the electrical connector or damage to the connector may occur.

2. Add a few drops of Motorcraft High Performance DOT 3 Motor Vehicle Brake Fluid, PM1-1 or PM1-1-C (US), CPM-1-C (Canada), to the fluid port at the threaded end of the **new** SCDS. See Figure 6.

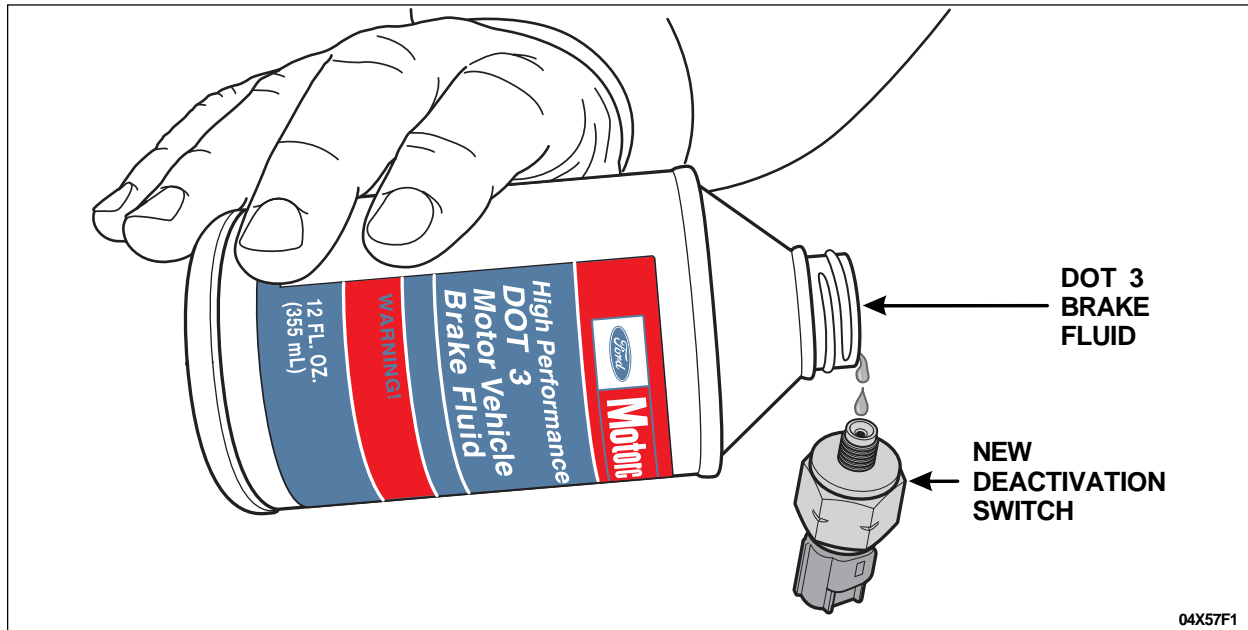


FIGURE 6

NOTICE: Do not allow any foreign material to enter the master cylinder port once the SCDS is removed.

NOTE: Call the Special Service Support Center for assistance if brake fluid does not flow from the SCDS fitting when the SCDS is removed.

NOTE: If the **new** SCDS is not installed immediately after the original switch is removed, the master cylinder brake fluid could drop below the minimum level and air could enter the brake system. If this should occur, air must be bled from the brake system at all 4 wheels. In this situation, the labor to bleed the brake system will not be covered under this program.

3. Remove the SCDS.
4. With the brake fluid reservoir cap removed, observe for brake fluid dripping/drainage from the SCDS fitting. As soon as brake fluid begins to bleed from the fitting, install the **new** SCDS and tighten to 18 Nm (13 lb-ft).



5. Check the brake fluid level at the master cylinder, fill to maximum fluid level and install the brake fluid reservoir cap.
6. Install the adapter jumper harness by connecting it to both the SCDS and the vehicle harness. Using the provided tie strap, secure the jumper harness to a nearby component such as the speed control cable or another wire harness.
7. Release the vehicle.





Ford Motor Company
Ford Customer Service Division
P.O. Box 1904
Dearborn, Michigan 48121



F0042876

0122



R. FILE

February 2008

330 TOWN CENTER DR STE 500
DEARBORN, MI 48126-2796

2003 Econoline

Vehicle ID #:

08S01

This notice is sent to you in accordance with the requirements of the National Traffic and Motor Vehicle Safety Act.

Ford Motor Company has decided that a defect which relates to motor vehicle safety exists in a Fused Jumper Harness that was installed in your vehicle when it was serviced. We apologize for this situation and want to assure you that, with your assistance, we will correct this condition. Our commitment, together with your dealer, is to provide you with the highest level of service and support.

What is the issue?

Our records indicated that your vehicle may have been repaired using a Fused Jumper Harness containing circuit polarity that is not compatible with your vehicle. As a result, if an electrical short should occur, the fuse may not offer the intended protection and the circuit may overheat, smoke, or burn, which could result in an underhood fire. The potential for a fire exists regardless of whether or not the engine is running.

What will Ford and your dealer do?

Ford Motor Company has authorized your dealer to remove the incorrect Fused Jumper Harness and install the proper Fused Jumper Harness. If the proper Fused Jumper Harness is not available, a new mating electrical switch will instead be installed. These repairs will be performed free of charge (parts and labor).

How long will it take?

The time needed for this repair is less than one-half day. However, due to service scheduling requirements, your dealer may need your vehicle for a longer period of time.

What are we asking you to do?

Please call your dealer without delay and request a service date for Recall 08S01. Provide the dealer with the Vehicle Identification Number (VIN) of your vehicle. The VIN is printed near your name at the beginning of this letter.

The vehicle owner is responsible for having this service action performed. Ford Motor Company reserves the right to deny coverage for any vehicle damage that may result from failure to have this recall performed on a timely basis. Therefore, please have this recall performed as soon as possible.



If you do not already have a servicing dealer, you can access <http://www.genuineservice.com> for dealer addresses, maps, and driving instructions.

Please note: Federal law requires that any vehicle lessor receiving this recall notice must forward a copy of this notice to the lessee within ten days.

What if you no longer own this vehicle?

If you no longer own this vehicle, and have an address for the current owner, please forward this letter to the new owner.

You received this notice because government regulations require that notification be sent to the last known owner of record. Our records are based primarily on state registration and title data, which indicate that you are the current owner.

Can we assist you further?

If you have difficulties getting your vehicle repaired promptly and without charge, please contact your dealership's Service Manager for assistance.

RETAIL OWNERS: If you still have concerns, please contact the Ford Motor Company Customer Relationship Center at 1-866-436-7332 and one of our representatives will be happy to assist you. For the hearing impaired call 1-800-232-5952 (TDD). Office Hours are Monday through Friday: 8:00AM - 5:00PM (Your Local Time).

If you wish to contact us through the Internet, our address is: www.ownerconnection.com.

FLEET OWNERS: If you still have concerns, please contact the Fleet Customer Information Center at 1-800-34-FLEET, Option #3 and one of our representatives will be happy to assist you. Representatives are available Monday through Friday 8:30AM - 5:00PM (Eastern Time). Or you may contact us through the internet at www.fleet.ford.com.

MOTORHOME OWNERS: If you still have concerns, please contact the Motorhome Customer Assistance Center toll free at 1-866-906-9811. Ford representatives are available 24 hours a day.

If you are still having difficulty getting your vehicle repaired in a reasonable time or without charge, you may write the Administrator, National Highway Traffic Safety Administration, 1200 New Jersey Ave. S.E., Washington, D. C. 20590 or call the toll free Vehicle Safety Hotline at 1-888-327-4236 (TTY: 1-800-424-9153) or go to <http://www.safercar.gov>.

Thank you for your attention to this important matter.

Ford Customer Service Division